

EAST BRIDGFORD MAGAZINE.



St. Peter's Church, East Bridgford.

Services.

HOLY COMMUNION:—

On all SUNDAYS (except 1st in Month) and HOLY DAYS at 8 a.m.
and after Morning Prayer on the First Sunday in the Month.

MORNING AND EVENING PRAYER:—

Sundays at 10.45, and 6.30 p.m.

Weekdays at 8 a.m. (Wednesday and Friday at 10), and 6.30 p.m. daily.

HOLY BAPTISM:—

First Sunday in month at 3, or at other Services on due notice.

CHURCHING OF WOMEN:—

Wednesday and Friday at 10, or before any Service on due notice.

SUNDAY SCHOOL:—

At 10 a.m. in the National School.

Children's Service and Catechizing in Church at 2.30.

CHRISTMAS DAY dawned pleasantly like a balmy spring day, after two previous days of cold and dense fog. The Church bells rang in the Holy Festival at 6 a.m., and at 8 a.m. those who, in the words of our hymn, "rise to adore the mystery of love," made their offering of thanks to God for His gift to mankind of His only Son. At the mid-day service the anthem by Dr. Stainer was sung, "O Zion that bringest good tidings," Isaiah xl. 9, with two verses from Hymn 56. The anthem was repeated on the following Sunday evening. The collections on Christmas Day amounted to £4 2s. 5d., for the Church Restoration Fund.

THE annual meeting of the Bible Society took place on Friday, December 20th, at 7 p.m. The Rector, who presided, read the annual report presented by Miss Clough, who has undertaken the post of Secretary in succession to Miss C. Beaumont, and referred to the loss sustained by the death of Mrs. Beaumont, who for many years has been a supporter of the society. The contributions for this year amounted to £6 2s. 6d., including 18s. 6d. collected at the meeting. The Rev. J. Cooper gave an address on the Society's work, in which he fully refuted a charge that had been made against it of "sweating" in the production of Bibles; and he gave an interesting description of its agency in helping to form and elevate the unwritten languages of many races.

We have pleasure in recording gifts to the Church which have been made at this Christmas season. The pulpit has been provided with a new and handsome oak base, and has itself been cleansed from its many coats of unsightly varnish, and repaired. The pulpit is of the Georgian period, having probably been made at the reparation of the Church which took place in 1778; it is of plain but solid workmanship, and is vastly improved by its new setting. A brass plate is to be affixed with the inscription, "To the glory of God this pulpit was restored through the efforts of a girl of fifteen." *Christmas, 1907.*"

An Ewer of hammered brass, bearing the lettering, "S. Peter, East Bridgford," has been presented for use at the Font.

A violet hanging for the pulpit desk has been given, and has been in use during the season of Advent.

THE Managers of the East Bridgford National School have for some time past felt the necessity of rebuilding the out-offices and placing them further from the school, and have had plans of the buildings prepared. A plot of ground adjoining the school yard has been generously conveyed to the Rector by the President and Fellows of Magdalen College for that purpose. H.M. Inspector, after his visit to the school in June last, says, "The much needed alterations to the offices should be carried out without delay." This order means that we must set about the work at once, and the Managers therefore ask for contributions to enable them to carry it out. The cost cannot be far short of £90, and it would be most desirable to lay new gravel in the playground at the same time. Towards this £20 in subscriptions have already been promised; Betton's charity will contribute £10, and the Diocesan Board of Education will be applied to for a grant. We shall ask every parent of children in the school for a contribution, feeling sure that they will recognise the reasonableness of the request since they receive education for their children free. We cannot fly to the bottomless pocket of "the rates" for the maintenance of the school buildings, and have no desire to add to the burden of the ratepayer, who is, however, already largely relieved in comparison with some places by having good school buildings voluntarily provided. But we have these buildings handed down to us in trust, and they stand for the maintenance of religion, for the right of parents to claim the instruction they desire for their children, and for the reality of the teaching given therein. We are determined that our school shall be fully and efficiently equipped in accordance with modern requirements, and we therefore confidently ask the inhabitants of East Bridgford to contribute to the expenditure which is now necessary, and which they may feel certainly relieves them from much heavier burdens.

The Managers of the School have to announce that at the suggestion of the Board of Education, no children under four years of age will be admitted after January 1st, 1908.

The School was examined on December 16th by Rev. T. W. Peck, Diocesan Inspector of Religious Instruction. The children had only, reassembled on that day after four weeks closing of the School, on account of the prevalence of whooping cough. The Inspector's report of his visit has not yet been received.

A party of the Churchworkers was entertained by the Rector and Mrs. Hill at the Rectory, on Wednesday, November 20th, when a very pleasant evening was spent by all.

At a meeting of the Bridford Hill Lodge of Oddfellows, held on December 18th last, Mr. William Mason resigned the office of Secretary, which he had filled for eighteen years. The members present heartily expressed their appreciation of his services. Mr. John Gregg was appointed as his successor in the office.

A successful concert was given on December 19th by the members and friends of the Band of Hope.

EXTRACTS FROM PARISH REGISTERS.

BAPTISM.

December 3rd. Ralph Bennett, son of John and Emily Pickford.

MARRIAGE.

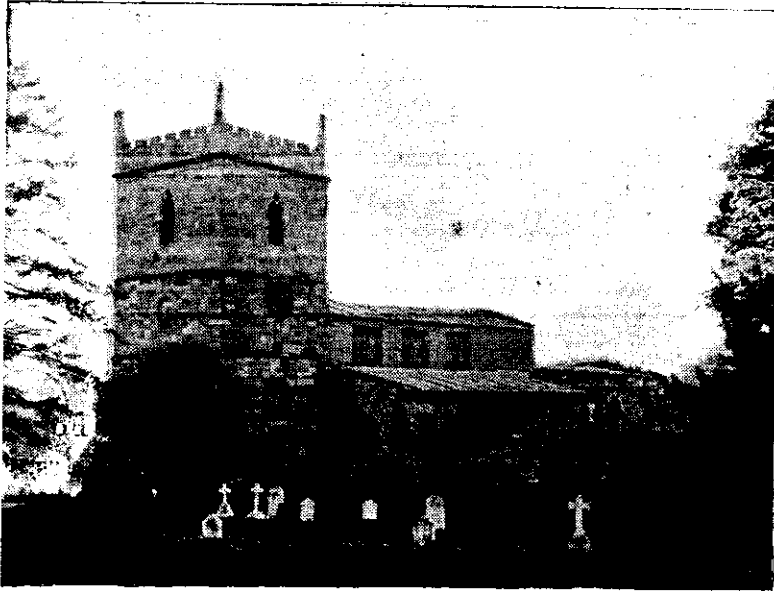
December 12th. *At S. Augustines', New Basford.* Wilfred Johnson and Emily Ann Mann.

BURIAL.

December 7th. Ralph Bennett Pickford, aged 3 months.



EAST BRIDGFORD MAGAZINE.



St. Peter's Church, East Bridgford.

Services.

HOLY COMMUNION:—

On all SUNDAYS (except 1st in Month) and HOLY DAYS at 8 a.m. and after Morning Prayer on the First Sunday in the Month.

MORNING AND EVENING PRAYER:—

Sundays at 10.45, and 6.30 p.m.

Weekdays at 8 a.m. (Wednesday and Friday at 10), and 6.30 p.m. daily.

HOLY BAPTISM:—

First Sunday in month at 3, or at other Services on due notice.

CHURCHING OF WOMEN:—

Wednesday and Friday at 10, or before any Service on due notice.

SUNDAY SCHOOL:—

At 10 a.m. in the National School.

Children's Service and Catechizing in Church at 2.30.

The Bishop of the Diocese intends to visit East Bridgford, and to hold a Confirmation in our Church after Easter. The Rector would be glad to know the names of those who desire to be presented for confirmation, as soon as possible, in order that he may arrange for confirmation classes in good time. In the case of adults the Rector will always arrange to see them at their own homes, and not in the class for younger persons.

A Confirmation in our Church, which we have not had for some years, should suggest to many amongst us to take an opportunity thus offered of making this important step onward in the Christian life; and while willingly confessing Christ before men, to ask of God the only strength which will enable them to fight manfully as Christians in life's battle, the strength of His Holy Spirit.

Those who desire to begin to study the question for themselves, should read the following passages in the Bible: Acts i. 1-3, and viii. 14-17. Ephes. iii. 14-19; II. Tim. i. 1, to ii. 3.

A large party assembled at the Temperance Hall for the New Year's Tea on Wednesday, Jan. 1st, numbering a total, with the helpers, of 214 persons. The tables were presided over by Mrs. Cartwright and Miss Fox, Mrs. Field, Mrs. Hill, Mrs. Goldston, Mrs. Lee and Mrs. Turner; Mrs. Chandley, Mrs. Hooley, and Mrs. Weatherell also contributing.

At the Entertainment which followed at 7 p.m. the Rector gave a Lantern Exhibition, including the stories of "Little Nell" and "John Gilpin," which were read by Mr. Turner Lee. Songs were contributed by Messrs. Chandley J. Kirkham, A. Shipman, J. Stanley, and W. Waterfield. Mrs. Cartwright gave a piece on the Violoncello, and Miss Alice Clough recited Tennyson's "Emmie; in the Children's Hospital." A large party of Handbell Ringers gave their performance which is always well appreciated.

The amount taken at the door was £4 12s. 3d., and when expenses were defrayed, a balance of £3 5s. was placed to the Church Restoration Fund.

The children attending the Church Sunday School were entertained at tea on Thursday, Jan. 2nd. After a happy evening the year's work was reviewed by the Rector. The names of those who were at the head of each class were, Boys:—Edward Manchester and Rowland Upton; Owen Blagg; Arthur Evelyn Manchester; Cecil Pickford; George Wilkinson. Girls:—Gertrude Poole, Jessie Pacey, Polly Waterfield, Sybil Pickford.

THE NATIONAL SCHOOL.—The Report of the Diocesan Inspector of Religious Instruction of his visit to the school on December 16th, has now reached us, and we are glad to be able to print such a satisfactory account.

"I was very pleased with the children, for what they answered they had clearly got into their minds, the Inspection coming as it did the first day after the long closing for illness. Both tone and teaching are excellent."—T. W. PECK, Diocesan Inspector.

The Inspector further describes all the work as "good"; the Old Testament of the upper division, the Old and New Testament and Catechism of the middle division and all the Repetition, being "very good." There were 108 children present at the examination.

The Rector's Prizes were awarded to Arthur Kemp and Gertrude Poole in Division I; Winifred Saward and Reginald Wilkinson in Division II; Winifred Hunt and Edward Wormald in Division III.

HOSPITAL SUNDAY.—The sum collected on January 26th, at the services in Church reached the satisfactory amount of £8 7s. 6d., which has been paid in to the Hospital Sunday Fund to be appropriated as follows: General Hospital £6 6s.; Women's Hospital £1 11s. 6d.; Children's Hospital £1.

The Rector has a certain number of recommendations at his disposal in respect of these contributions, and will be glad to have applications in cases of need.

HOME MISSIONS.—Our annual collections for the Home Missions of the Church of England will be made on Sunday, February 16th, when it is hoped the organizing Secretary of the Additional Curates' Society, the Rev. F. C. Pheasant, will be able to come to preach at East Bridgford.

On the following day, Monday, February 17th, he will give a lecture in Home Mission Work in the Temperance Hall at 7.30 p.m.

MOTHERS' UNION.—The next meeting will be held at the Rectory at 2.30 on Wednesday, February 12th.

EXTRACTS FROM PARISH REGISTERS.

BAPTISM.

December 29th. Emily, daughter of John and Ann Mary Allister.
January 19th. Lucy, daughter of John and Emma Cooper.
" " Mabel, daughter of Harry Herbert and Hannah Gamble.

BURIAL.

December 31st. Mary Ellis, aged 80 years.

This year being Leap Year, there are 29 days in February.

Ash Wednesday, the first day of Lent, falls on March 4th.

Easter Day, April 19th.

Ascension Day, May 28th.

Whitsunday, June 7th.

East Bridgford Feast Sunday, June 28th.



EAST BRIDGFORD MAGAZINE.



St. Peter's Church, East Bridgford.

Services.

HOLY COMMUNION:—

On all SUNDAYS (except 1st in Month) and HOLY DAYS at 8 a.m. and after Morning Prayer on the First Sunday in the Month.

MORNING AND EVENING PRAYER:—

Sundays at 10.45, and 6.30 p.m.

Weekdays at 8 a.m. (Wednesday and Friday at 10), and 6.30 p.m. daily.

HOLY BAPTISM:—

First Sunday in month at 3, or at other Services on due notice.

CHURCHING OF WOMEN:—

Wednesday and Friday at 10, or before any Service on due notice.

SUNDAY SCHOOL:—

At 10 a.m. in the National School.

Children's Service and Catechizing in Church at 2.30.

LENT 1908.

On Ash Wednesday, March 4th, the first day of Lent, the Holy Communion will be celebrated at 8 a.m., Morning Prayer at 11. Evening prayer with Sermon at 7.30.

There will be Evening Service, with Sermon at 7.30, on Wednesdays during Lent. Lent is a time for making a fresh beginning. God is very merciful; every day affords a new start; but we shall do well to begin our efforts of self control and progress and preparation for Easter with the solemn season that now calls us.

The Rector hopes that those who desire to be prepared for the coming Confirmation will let him know at the earliest opportunity.

On Sunday, February 16th, the alms were given to the Home Mission work of the Additional Curates' Society. The Organizing Secretary, Rev. F. C. Pheasant was to have preached at the Evening Service, but was unfortunately prevented from coming here, owing to the illness of the clergyman in another parish.

On the following day, February 17th, Mr. Pheasant gave an admirable lecture in the Temperance Hall, at 7.30 p.m. Following the usual custom, his subject was a description of a parish which is helped by the Society, and on this occasion the place was one in our own county, Sutton-in-Ashfield, which has grown from a small village to a large colliery town of 18,000 inhabitants, with a staff of four clergy. The lecture was illustrated by lime-light views and the pictures of work in the coal mines were especially interesting. The collection at the meeting was 11/4, and at the Sunday Services £2 18s. 9d.; total £3 10s. 1d.

CHORAL SOCIETY.—By the time the Magazine is printed the Concert will have taken place, given by the East Bridgford Choral Society in the Temperance Hall on Thursday, February 27th. The first part consists of "The Banner of St. George," (Elgar) and the second of solos, vocal and instrumental, part songs, etc. Performers: Miss Exton, (soprano), Mr. G. Hadley (baritone), Miss Sybil Keymer (violin), Mrs. Cartwright, ('cello), Mrs. Wilkinson, A.L.C.M. (accompanist), Miss Sharp, L.L.C.M. (accompanist), Mr. Doncaster, L.N.C.M. (organ). Chorus of 60 voices. Rev. J. Standish, Conductor.

The East Bridgford Ringers must be congratulated on having made a good beginning in the difficult art of change ringing during the past winter, and they are now able to accomplish the whole peal of 120 Grandsire Doubles. This means that the order of the bells is changed at every stroke, never being rung twice in the same order, until the whole number of possible combinations of five bells is completed, the Tenor bell covering, or ringing last in each change. There are several methods of performing this, of which "Grandsire" is one. It requires a clear head and concentrated attention, and much patient practice, but it adds immensely to the interest of the art of ringing. Like many other things in our church, the fittings and hanging of the bells require extensive repairs, and some day must be taken in hand.

It will be of interest to record the inscriptions on the bells.

- Treble. **1649** G.O. (George Oldfield, a Nottingham bell founder).
 2. GLORY BE TO GOD ON HIGH. JOSEPH CAUNT AND THOS. ALLYSTER. C.W. THOMAS HEDDERLY, FOUNDER, NOTTINGHAM, **1778**.
 3. JESUS BE OUR SPEDE **1631**. W.I.
 4. J. TAYLOR & CO., FOUNDERS, LOUGHBOROUGH **1870**.
 5. J. TAYLOR, FOUNDER, LOUGHBOROUGH **1844**. R. W. HUTCHINS, RECTOR T. LEVERS, T. FREEMAN, C. WARDENS.
 Tenor. I TO THE CHURCH THE LIVING CALL AND TO THE GRAVE DO SUMMON ALL.
1779. JOSEPH CAUNT AND THOS. ALLYSTER, CHURCH WARDENS. THOS. HEDDERLY, FOUNDER, NOTTINGHAM.
 Diameter 3 ft. 6 in. Note F. Weight about 14 cwt.

The subjoined record of the Rainfall, taken at the Hall, East Bridgford, during 1907 shews the amount for each month in inches and decimals of an inch. The amounts of the two previous years are added for comparison.

		RAINFALL.			
		1907		1905	1906
January.....	1.19	..	.70	..	2.86
February....	1.60	..	.47	..	1.53
March.....	1.51	..	2.39	..	2.27
April.....	1.77	..	1.66	..	.69
May.....	2.68	..	.66	..	1.68
June.....	2.95	..	3.01	..	1.87
July.....	2.05	..	1.07	..	1.00
August.....	2.11	..	2.80	..	1.39
September..	.70	..	1.80	..	1.10
October....	3.22	..	1.14	..	4.04
November....	1.57	..	1.97	..	3.28
December....	3.81	..	1.41	..	2.47
Total		25.16		19.08	24.18
1908. Jan. '80			Feb. 1.22 (up to Feb. 23rd.)		

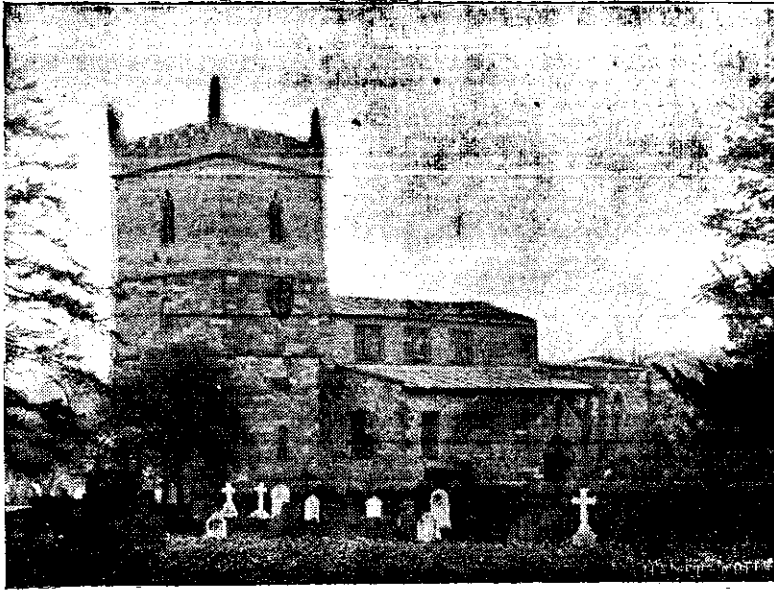
CRICKET CLUB.—A general meeting of the Club was held in King Edward Club on Thursday, February 12th, when the following were elected :— Captain, Mr. E. E. Coville ; Vice-Captain, Mr. C. Moor ; Hon. Secretary, Mr. J. Upton ; Hon. Treasurer, Rev. A. D. Hill ; Committee, Messrs. Turner Lee, F. Sharp, H. Goldston, J. Fletcher, W. Williscroft and J. Wilkinson, jun.

WE record with deepest regret the death of one of our oldest parishioners, Miss Emma Holloway. For many years she was a diligent collector for S.P.G. Foreign Missions. She has gained the love and respect of all who knew her sincere and simple character. She passed away painlessly shortly after receiving her last Communion on February 24th, at the age of 83.

DIED, at Phœnix Lodge, Cheltenham, on the 21st February, Jane Farrow, for 21 years the beloved nurse and friend in the family of the late L. Milward, Esq., of East Bridgford Hall.—R.I.P.



EAST BRIDGFORD MAGAZINE.



St. Peter's Church, East Bridgford.

Services.

HOLY COMMUNION:—

On all SUNDAYS (except 1st in Month) and HOLY DAYS at 8 a.m.
and after Morning Prayer on the First Sunday in the Month.

MORNING AND EVENING PRAYER:—

Sundays at 10.45, and 6.30 p.m.

Weekdays at 8 a.m. (Wednesday and Friday at 10), and 6.30 p.m. daily.

HOLY BAPTISM:—

First Sunday in month at 3, or at other Services on due notice.

CHURCHING OF WOMEN:—

Wednesday and Friday at 10, or before any Service on due notice.

SUNDAY SCHOOL:—

At 10 a.m. in the National School.

Children's Service and Catechizing in Church at 2.30.

LENT SERVICES.—The Lenten Evening Services with Sermon will be held on Wednesdays, April 1st, 8th and 15th.

On March 18th, the Rev. A. E. Meredith, Vicar of Bawtry, preached, and the Rev. T. B. Charlesworth, Vicar of Long Eaton, has promised to preach on April 8th.

In Holy Week, the Holy Communion will be celebrated at 8 a.m., on Maundy Thursday, April 16th.

On GOOD FRIDAY the Litany will be said at 8, Morning Service at 11, Evening Service, 7.30. From 2 to 3 p.m., short addresses will be given, with hymns, on the Passion of our Lord Jesus Christ, so that anyone can come in and remain for a part of the time only if desirous of doing so.

On EASTER DAY, April 19th, the Holy Communion will be celebrated at 7, 8, and mid-day.

THE ANNUAL EASTER VESTRY Meeting will be held in the School at 7.30 p.m., on Tuesday, April 21st, for the appointment of Churchwardens and Sidesmen, the presentation of Churchwardens' Accounts and such other business as may be brought forward.

The Church Council elected in 1905 has now completed its term of three years. At the close of the Vestry Meeting, on Tuesday in Easter Week, a meeting of the Church Electors will be held for the purpose of electing *five communicant parishioners*, to serve for three years on the Church Council, with the two Churchwardens and three of the Sidesmen appointed at the Annual Vestry.

On Quinquagesima Sunday, March 1st, the day appointed as Diocesan Sunday, the Collections for the Bishop's Diocesan Fund amounted to £3 8s. 5d.

CONFIRMATION.—The Lord Bishop of Southwell has given notice that he will hold a Confirmation in East Bridgford Church, at 6.30 p.m., on Wednesday, May 13th.

CHURCH RESTORATION FUND.—An Entertainment and Sale will be opened in the Temperance Hall on Thursday, April 30th, in the afternoon and evening. There will be a stall for the sale of work, etc., and also for second-hand articles, and tea and refreshments will be provided.

Contributions for the stalls will be thankfully received by Mrs. Hill at the Rectory, and for the Refreshment Tables by Miss S. Millington.

PAN-ANGLICAN CONGRESS.—This great meeting, which is to be held in London from June 15th to 23rd, should be constantly in our thoughts. "Pan" is a word in Greek meaning "the whole" or "all." There is, we know, a Church Congress held every year in different centres in England, for English Church-people, but for the first time, this year, representatives of the whole Anglican part of the Church Catholic, in England and Wales, from our Colonies, from the Indian Empire, from the United States and from all Missionary areas, will meet together in the Pan-Anglican Congress. It is not a Missionary Congress though Missionary problems form a large part of the subject matter. It is to give expression to the thoughts and hopes of Churchmen for the spread of the Gospel, and the unity of Christendom; to define the true Christian Spirit in relations of man to man, of race to race; to consider the supply of Clergy and the scope of lay work of men and women; and to face many social, industrial, educational and linguistic problems.

It has been determined by the Dioceses throughout the world that a Thank-offering to Almighty God, for the blessings given to the Anglican Church, shall be made, and presented at S. Paul's Cathedral on June 24th. Our Church Council have agreed that the offerings from this parish shall be made by contributions placed in the box at the Church door and also at the offertory at the Whit-Sunday morning Services.

On Friday, March 20th, Mr. G. Cartwright gave a very interesting lecture, illustrated with Lantern views, entitled "Round the world with our Church abroad," with special reference to the forthcoming Pan-Anglican Conference. A Collection to defray the expenses of the Hall and Lantern was made, a balance of 13s. 2d., being given to the Diocesan Thank-offering.

A PRAYER FOR THE PAN-ANGLICAN CONGRESS, 1908.—O Almighty God, pour forth, we beseech Thee, Thy Holy Spirit upon Thy servants who shall come together from many lands for counsel and mutual help in the work of Thy Holy Church. Grant unto them and unto us abundance of wisdom and of zeal, that we may both know Thy will and fulfil it with all our powers, to the advancement of Thy Kingdom and the blessing of all mankind, through Our Lord and Saviour Jesus Christ. *Amen.*

CHORAL SOCIETY.—The Concert, of which the programme was announced in our last number, on February 27th, proved a most successful performance of Elgar's "Banner of S. George," under Rev. J. Standish's baton. Miss Sybil Keymer's violin solos were specially enjoyed by the audience. Miss Exton (soprano) sang "Melesande in the Wood," "May day and night," and "Voices in the Garden," and as encores "Annie Laurie" and "A little fragrant flower." Mr. Edward Hadley (baritone) sang Handel's "Droop not young lover" and "The Curfew." The members of the Chorus sang with much credit the Part Songs "There is music by the river," "Good night, beloved" and Farring's "Song of the Vikings."

At a General Meeting of the Choral Society held on March 24th, the balance sheet was presented showing a balance in hand of £4 14s. 9d. It was agreed to give £3 0s. 0d., to the Temperance Hall Renovation Fund.

The Quarterly Meeting of the Mothers' Union will be postponed till May.

EXTRACTS FROM PARISH REGISTERS.

BAPTISM.

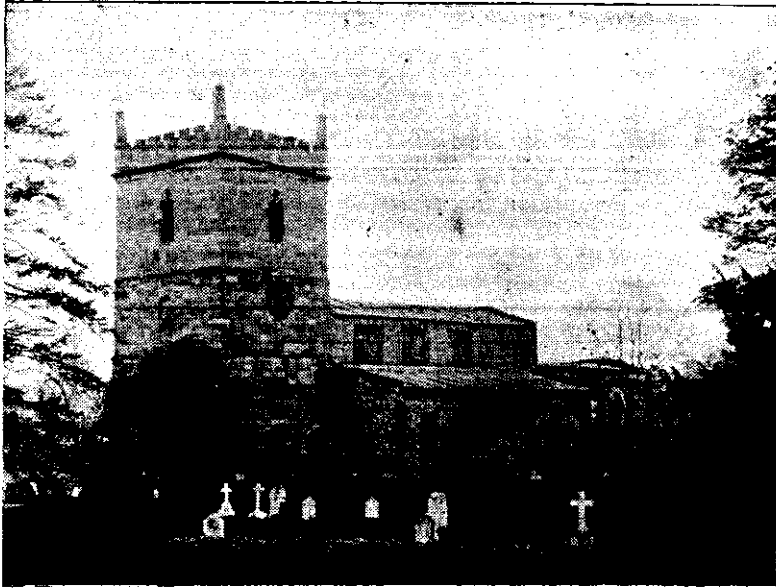
March 22nd. Rose May, daughter of George and Maggie Dalton.

BURIAL.

February 27th. Emma Holloway, aged 83 years



EAST BRIDGFORD MAGAZINE.



St. Peter's Church, East Bridgford.

Services.

HOLY COMMUNION :—

On all SUNDAYS (except 1st in Month) and HOLY DAYS at 8 a.m. and after Morning Prayer on the First Sunday in the Month.

MORNING AND EVENING PRAYER :—

Sundays at 10.45, and 6.30 p.m.

Weekdays at 8 a.m. (Wednesday and Friday at 10), and 6.30 p.m. daily.

HOLY BAPTISM :—

First Sunday in month at 3, or at other Services on due notice.

CHURCHING OF WOMEN :—

Wednesday and Friday at 10, or before any Service on due notice.

SUNDAY SCHOOL :—

At 10 a.m. in the National School.

Children's Service and Catechizing in Church at 2.30.

have children or friends among the candidates for Confirmation should endeavour to be present at the service, and god-parents are specially called upon to be there, both to pray for God's gift of the Holy Spirit on those who are confirmed, and also, as St. Paul says, to "stir up the gift of God which is in you by the laying on of hands."

Time Table for East Bridgford of Trains to and from Nottingham, for May, 1908 :—

Leave		Arrive Nottingham		Leave Nottingham.		Arrive	
Bingham.	Lowdham.	G.N.R. Victoria.	M.R.	G.N.R. Victoria.	M.R.	Bingham.	Lowdham.
—	7.0	—	7.22	5.25	—	5.48	—
7.30	—	7.53	—	—	6.0	—	6.19
—	7.51	—	8.14	7.15	—	7.38	—
8.20	—	8.44	—	—	7.20	—	7.39
—	8.25	—	8.15	*8.10	—	8.34	—
—	9.5	—	9.25	—	8.37	—	8.53
* 9.43	—	10.5	—	9.25	—	9.48	—
9.51	—	10.13	—	*10.24	—	10.47	—
—	10.5	—	10.24	—	11.15	<i>Wednesdays</i>	
10.49	<i>Saturdays</i>	11.9	—	—	11.25	—	11.28
11.55	—	12.18	—	11.52	—	12.15	—
—	11.19	—	11.42	—	12.45	—	1.3
*1.40	—	2.5	—	—	1.5	—	1.24
2.1	—	2.24	—	* 1.50	—	2.13	—
—	2.1	—	2.21	—	1.55	—	2.13
—	2.28	—	2.47	—	2.5	—	2.24
—	3.25 <i>Fridays</i>	—	3.40	2.5	—	2.24	—
*3.22	—	3.44	—	2.43	—	3.6	—
—	4.22	—	4.41	—	3.35	—	3.54
4.54	—	5.18	—	4.5 <i>Saturdays</i>	—	4.27	—
—	4.37	—	4.56	—	4.45	—	5.4
5.2	<i>Saturdays</i>	5.25	—	* 4.50	—	5.13	—
—	6.17 <i>Sat.</i>	—	6.38	—	6.10	—	6.29
—	6.29	—	6.49	6.15	—	6.38	—
6.59	—	7.22	—	—	6.40	—	6.59
—	7.44	—	8.4	—	7.45	—	8.4
9.0	—	9.23	—	7.35	—	7.58	—
—	9.42	<i>Saturday</i>	10.2	8.50	—	9.13	—
—	9.55 <i>except Saturday</i>	—	10.14	—	9.20	—	9.38
—	10.15 <i>Saturday</i>	—	10.35	9.55	—	10.19	—
—	11.12 <i>except Thur. & Sat.</i>	—	11.30	—	10.38 <i>except Thur. & Sat.</i>	—	10.56
—	—	—	—	—	11.15 <i>Thur. & Sat.</i>	—	11.36
—	—	—	—	11.0 <i>Saturdays</i>	—	11.24	—

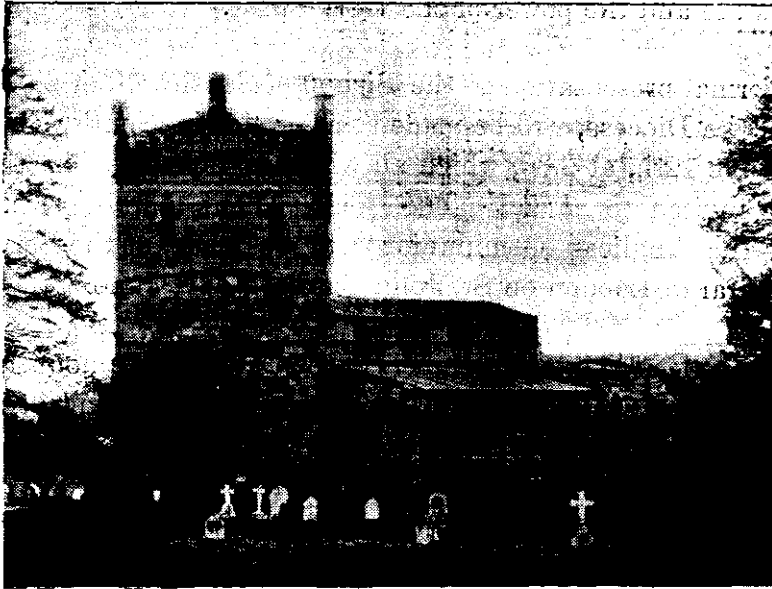
SUNDAYS.

—	12.49	—	1.9	—	10.15	—	10.34
3.10	—	3.33	—	11.40	—	12.4	—
4.55	—	5.18	—	2.10	—	2.33	—
—	6.59	—	7.19	—	2.45	—	3.4
—	8.12	—	8.33	6.13	—	6.36	—
8.35	—	9.0	—	—	8.10	—	8.29

*Newark trains.

N.B.—All the G.N.R. trains stop at London Road (High Level Station) as well as at the Victoria Station.

EAST BRIDGFORD MAGAZINE.



St. Peter's Church, East Bridgford.

Services.

HOLY COMMUNION:—

On all SUNDAYS (except 1st in Month) and HOLY DAYS at 8 a.m. and after Morning Prayer on the First Sunday in the Month.

MORNING AND EVENING PRAYER:—

Sundays at 10.45, and 6.30 p.m.

Weekdays at 8 a.m. (Wednesday and Friday at 10), and 6.30 p.m. daily.

HOLY BAPTISM:—

First Sunday in month at 3, or at other Services on due notice.

CHURCHING OF WOMEN:—

Wednesday and Friday at 10, or before any Service on due notice.

SUNDAY SCHOOL:—

At 10 a.m. in the National School.

Children's Service and Catechizing in Church at 2.30.

The first Sunday in this month is the great Christian festival of Whit-Sunday, June 7th, when we commemorate the day of Pentecost on which the Holy Spirit came down with special power upon the Church, therein to abide for ever as the Giver of Life to the whole body.

The Celebrations of the Holy Communion are at 7, 8, and 10.45., and the offerings at those services will be our contribution to the Diocesan Thank-Offering on the occasion of the Pan-Anglican Congress, that great sign of the Church's life and the power of the Holy Spirit.

A public formal presentation to the Bishop of Southwell, of all the contributions from the Diocese, will be made at a service in Southwell Cathedral on Friday, June 12th, at 2.30, which all who are interested in the Thank-Offering are invited to attend. The joint Thank-Offering from all the Dioceses of the Anglican Communion will be made at the Service at St. Paul's Cathedral in London on St. John Baptist's day, June 24th.

The Lenten collection by the members of the Catechism, amounting to 10/6, has been sent to the Church of England Society for Waifs and Strays.

The Bishop of Southwell paid his first visit to our parish on May 13th, and held a Confirmation at 6.30 p.m. in the Parish Church. Besides nineteen candidates from among ourselves there were twenty one from Scarrington, Aslockton and Woodborough. The Bishop gave very inspiring addresses, reminding the candidates that they had been called into the family of God not that they might be happy and comfortable, not merely that they might be saved, but that they might do the work of the Church, God's work in the world. They had now come to ask for strength; they might not feel different from what they had felt before, but it was there, and they would know it and find it if they sincerely tried to do God's work. They could understand the gift that they were receiving, and be sure that the promises of God held good. We were not without proofs of the Holy Spirit's power; it was to be seen in the change in character among men; and in the signs of renewed life and growth of the Church, such as the great assembly from all parts of the world soon to take place in London. The growth might not be noticed in our quiet home life, but it was there, and with a wider out-look it could be seen, and we may take the Lord Jesus at His word that the promised "power from on high" is working in the world.

The Entertainment and Sale arranged for Thursday, April 30th, proved very successful, in spite of the wet weather, and resulted in an addition of £17 to the Church Restoration Fund. The Sale of work and other articles was carried on briskly during the afternoon and evening by Mrs. Turner, Mrs. Allwood, Miss Barker, Mrs. Boulby, Mrs. Case, Mrs. Coville and Mrs. S. Taylor, and a second hand stall by Mrs. Mussell and Mrs. Harrison. The refreshments were under the management of Miss Millington, Mrs. Sumner, and Miss Daft. A very pretty play entitled "Three Fairy Gifts" was twice performed, the principal performers being, Miss Spendlove, Miss P. Spendlove, Miss Thompson, Miss G. Hooley, Miss Joyce Chandley, Miss E. Bateman, and Messrs. Hodgekinson and E. A. Manchester. The dancing and music were superintended by Miss Hooley and Miss Sharpe, and the stage kindly erected by Mr. Sharman. Our best thanks are due to these and many others who gave assistance.

A successful Whist drive was held on April 27th, in aid of the Nurse Fund for which £4 was obtained.

I have been asked to give an explanation of the use of special bread at the Holy Communion, which I gladly do that no one may suppose there is any hidden doctrine implied by it. It is purely a matter of cleanliness, reverence and convenience, and it has been well considered by the Church Council; but if anyone finds a difficulty about it, I hope he will personally say so to me. The point to be considered is not altogether whether it be leavened or unleavened, for either kind is quite lawful in our Church. Unleavened bread was of course used by our Lord at the first institution of the Sacrament, and the custom was continued, though leavened bread was used as well. The early Christians did not make a point of the use of either; the western part of the Church gradually settled down into the use of the former, and the eastern part into the use of the latter very carefully made. In 1552 a rubric was added in our Prayer Book to permit either. It does not say that henceforth ordinary bread was to be used, but that ordinary bread was to be allowed, "but the best and purest wheat bread that conveniently may be gotten." But since modern practice and popular taste now require bread, such as is usual to be eaten, to contain many ingredients that were never imagined when this rubric was written, the best and purest wheat bread has now to be specially made. It seems reasonable to use bread which can

“conveniently be gotten” solely for Sacramental use, made of the best flour and purest water and baked very thin, so as to have the advantages of being always ready and of making no crumbs, advantages which I believe those who think carefully of the matter, as well as those who have to provide and administer the bread, can fully appreciate.

A. D. H.

MOTHERS' UNION. A Summer Festival will be held at the Rectory on Thursday, June 11th, (St. Barnabas' Day), at 2.30 p.m. Mrs. Windley, of Colston Bassett, will give an address to the members.

EAST BRIDGFORD FEAST.—Feast Sunday is June 28th.

THE FLOWER SHOW will be held on Tuesday, June 30th.

CRICKET CLUB fixtures for June :—

June 6	Sat.	Lowdham P.S.E.
.. 8	Mon.	Flintham.
.. 13	Sat.	Gunthorpe.
.. 20	Sat.	Nottingham Brewery.
.. 23	Tues.	Car Colston.
.. 25	Thur.	Shelford.
.. 27	Sat.	Caythorpe.
.. 29	{ Feast	Nelson's, Ltd.
.. 30	{ Week	Car Colston.

EXTRACTS FROM PARISH REGISTERS.

BAPTISMS.

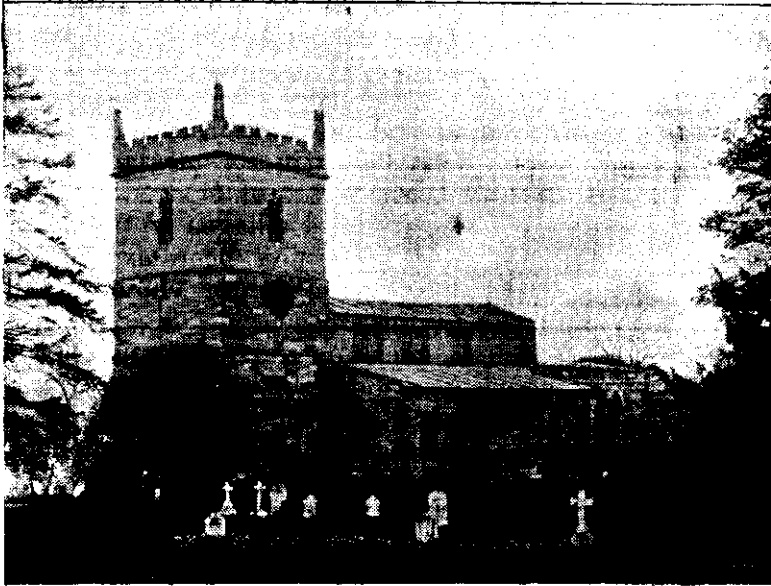
April 1st John, son of Frederic John and Ethel Edith Radford.
.. 19th Rose, daughter of Richard and Jane Blatherwick.

BURIALS.

May 5th John Baugley, aged 85 years.
.. 13th. at Southport. Edward Clough, aged 80 years.



EAST BRIDGFORD MAGAZINE.



St. Peter's Church, East Bridgford.

Services.

HOLY COMMUNION:—

On all SUNDAYS (except 1st in Month) and HOLY DAYS at 8 a.m. and after Morning Prayer on the First Sunday in the Month.

MORNING AND EVENING PRAYER:—

Sundays at 10.45, and 6.30 p.m.

Weekdays at 8 a.m. (Wednesday and Friday at 10), and 6.30 p.m. daily.

HOLY BAPTISM:—

First Sunday in month at 3, or at other Services on due notice.

CHURCHING OF WOMEN:—

Wednesday and Friday at 10, or before any Service on due notice.

SUNDAY SCHOOL:—

At 10 a.m. in the National School.

Children's Service and Catechizing in Church at 2.30.

The Bishop of Southwell has written the following letter to the Diocese :—

Dear Brethren,

I write as the Pan-Anglican Congress is closing, and as we are offering to God our most hearty Thanksgiving for wonderful mercies.

If I were asked to give my impression of this vast Congress I would at once emphasize two or three characteristics which stand out quite clear :—

Firstly there has been a beautiful spirit of humility—a total absence of anything which approached boastfulness.

Secondly, an absolute fearlessness in handling the many problems which confront us—a cry for light from whatever quarter it might come.

Thirdly, and that which made such boldness alone possible, a glorious spirit of unity, with a charity so generous that the little questions which divide found no place.

Fourthly a calm confidence that in the place of vast movements of thought and vast changes which are taking place in the social world abroad and at home, the church of Christ has still its message to deliver—the manifestation to all men of the Incarnate Son of God.

It will be for us now in our Dioceses and villages to “read, mark, learn, and inwardly digest” the thoughts which have been expressed, and so to make channels for the streams of refreshing water which have been stored up for use in the Church of the Living God.

In conclusion may I beg you to continue in your churches the prayer for the Lambeth Conference, which now commences its sittings. The meetings of that Conference are private and only for Bishops, but it is a Conference in which there is not only discussion, but action. We Bishops, therefore, need the prayers of our people, for the guidance of the Holy Spirit, that we may do all according to His will and for His glory.

Yours Sincerely,

Edwyn Southwell.

On Wednesday, June 24th, the Bishop laid upon the altar of St. Paul's Cathedral the sum of £5,510 1s. 1d. from the Diocese of Southwell, being a free will offering in thankfulness for blessings vouchsafed to the Anglican Communion in its growth and spiritual development. Our own East Bridgford contributions, made in the Offertory on Whit-Sunday, and the box at the Church door, etc., was £17 2s. 3d. The total amount of the collections from the 250 dioceses in all parts of the world, offered at the same time at St. Paul's, was £333,208 0s. 11½d.

The Lambeth Conference of Bishops begins on July 4th and continues until August 5th.

The month of June has this year brought us finer weather than we have experienced for many years in this summer month, and ends with an excellent prospect for the hay crop, and beautiful weather for the East Bridgford feast. The clear and unusually light nights have been quite worth recording.

The East Bridgford Horticultural Society held its 45th annual Show on Tuesday, June 30th, at which the produce exhibited was remarkably good. The Hon. Secretary, Mr. H. Goldston, has acted in this capacity for a number of years with great success. The judges were, Mr. Sears, gardener at

Whatton Manor, and Mr. A. Parr, gardener to Earl Manvers, Holme Pierrepont. The amount taken at the gate was £9 1s. 9d. The Radcliffe Brass Band (conductor, Mr. A. Hopkins), played during the afternoon, and also for dancing in the evening. The following is the full prize list :—

CLASS A.—(Gentlemen, Professional Gardeners, and Farmers.)

Roses : 1, Dr. Duff ; 2, Rev. E. P. Weatherell and Miss Fox.
Geraniums—bloom : 1, Rev. A. D. Hill ; 2, Dr. Duff ; foliage : 1, Miss Fox ; 2, Rev. A. D. Hill.
Pelargonias : 1, and 2, Rev. A. D. Hill.
Fuschias : 1, and 2, Miss Fox.
Calceolarias—herbaceous : 1, and 2, Rev. A. D. Hill ; shrubby : 1, and 2, Miss Fox.
Petunias : 1, and 2, Rev. A. D. Hill.
Greenhouse plants : 1, Miss Fox ; 2, Rev. A. D. Hill ; Sweetwilliams : 1, Miss Fox ; 2, Rev. A. D. Hill.
Bouquet of garden flowers : 1, and 2, Miss Fox.
Pansies : 1, and 2, Miss Fox.
Carrots : 1, and 2, Dr. Duff.
Cauliflowers : 1, and 2, Rev. A. D. Hill.
Cucumbers : 1, and 2, Rev. A. D. Hill.
Broad beans : 1, and 2, Rev. A. D. Hill.
Onions—spring sown : Rev. A. D. Hill ; autumn sown : 1, Rev. A. D. Hill ; 2, Mr. S. Richardson.
Lettuce : 1, Rev. A. D. Hill ; 2, Dr. Duff.
Peas : 1, and 2, Rev. A. D. Hill.
Potatoes—round : 1, Rev. A. D. Hill ; 2, Dr. Duff ; kidney : 1, Rev. A. D. Hill ; 2, Dr. Duff.
Turnips, 1, and 2, Rev. A. D. Hill.
Apples—last year's : 1, and 2, Rev. A. D. Hill ; this year's : 1, and 2, Rev. A. D. Hill.
Gooseberries : 1, and 2, Miss Fox.
Currants—white : 1, and 2, Rev. A. D. Hill ; red : 1, and 2, Dr. Duff ; black : 1, and 2, Miss Fox.
Gooseberries : 1, S. Richardson ; 2, Rev. A. D. Hill.
Strawberries : 1, Miss Fox ; 2, Dr. Duff.
Cherries : 1, Mr. W. Woodsend ; 2, Miss Fox.
Best tray of vegetables : 1, and 2, Rev. A. D. Hill.
The respective gardeners were—Dr. Duff, W. Willis-croft ; Rev. A. D. Hill, J. Mussell ; Miss Fox, D. Gower.

CLASS B.—(Tradesmen and Cottagers.)

Roses—1, W. C. Millington ; 2, B. Wilkinson.
Geraniums, bloom—1, and 2, J. Green ; foliage, 1 and 2, J. Green.
Pelargoniums—1, J. Green ; 2, G. Huskinson.
Fuschias—1, and 2, J. Green.
Calceolarias, shrubby—1, W. C. Millington ; 2, J. Alvey.
Petunias—1, and 2, W. C. Millington.
Window plants—1, G. Huskinson ; 2, H. Shipman.
Greenhouse plants—1, and 2, J. Green.
Sweetwilliams—1, W. C. Millington ; 2, J. Green.
Bouquet of garden flowers—1, J. Green ; 2, W. C. Millington.
Pansies—1, W. C. Millington ; 2, J. Higgs.
Carrots—1, R. Wilkinson ; 2, J. Green.
Cauliflowers—1, and 2, W. C. Millington.
Broad beans—1, and 2, W. C. Millington.
Onions, spring sown—1, and 2, W. C. Millington ; autumn sown, 1, and 2, W. C. Millington.
Lettuce—1, W. C. Millington.
Peas—1, and 2, W. C. Millington.
Potatoes, round—1, and 2, R. Hoyles ; kidney, 1, and 2, W. C. Millington.
Turnips—1, and 2, J. Green.
Apples, last year's—1, and 2, J. Green ; this year's, 1, E. Coville ; 2, J. Alvey.

Gooseberries—1, Shipman ; 2, J. Alvey.
Currants, white—1, and 2, J. Alvey ; red, 1, and 2, J. Higgs, black, 1, and 2, Shipman.
Raspberries—1, and 2, E. Coville.
Strawberries—1, and 2, J. Green.
Cherries—1, and 2, Miss Millington.
Best tray of vegetables—W. C. Millington.

CLASS C.—(Labourers),

Roses : 1, F. O. Green ; 2, R. Smith.
Geraniums—bloom : 1 and 2, F. O. Green ; foliage : 1, Watson ; 2, R. Smith.
Pelargoniums : 1, F. O. Green ; 2, C. Walton.
Fuschias : 1, C. Walton ; 2, F. O. Green.
Calceolarias : 1, Watson ; 2, C. Walton.
Pot of musk : 1, F. O. Green ; 2, C. Walton.
Petunias : 1 and 2, F. O. Green.
Window Plants : 1 and 2, F. O. Green.
Sweetwilliams : 1 and 2, F. O. Green.
Collection of cut flowers : 1, C. Walton ; 2, F. O. Green.
Pansies : 1, R. Smith ; 2, F. O. Green.
Carrots : 1, F. O. Green ; 2, C. Walton.
Cauliflowers : 1 and 2, F. O. Green.
Cabbages : 1, F. O. Green.
Rhubarb : 1, W. Cloxtion.
Broad beans : 1, F. O. Green ; 2, C. Walton.
Onions—spring sown : 1 and 2, F. O. Green ; autumn sown : 1, R. Smith ; 2, C. Walton.
Lettuce : 1 and 2, F. O. Green.
Eschalots : 1, R. Smith ; 2, F. O. Green.
Peas : 1 and 2, F. O. Green.
Potatoes—round : 1, R. Smith ; 2, C. Walton ; kidney : 1, R. Smith ; 2, C. Walton.
Turnips : 1 and 2, F. O. Green.
Apples—last year's : 1, F. O. Green ; 2, R. Smith. this year's : 1 and 2, F. O. Green.
Gooseberries : 1, F. O. Green ; 2, R. Smith.
Raspberries : 1 and 2, F. O. Green.
Strawberries : 1, R. Smith ; 2, C. Walton.
Currants—white : 1, R. Smith ; 2, F. O. Green ; red : 1, R. Smith ; 2, C. Walton ; black : 1, C. Walton ; 2, Watson.
Bouquet of wild flowers : 1, Gower ; 2, Ellis ; 3, Bateman and Crossland.
Best tray of vegetables : 1, F. O. Green ; 2, C. Walton.
Butter : 1, Miss Millington ; 2, Mr. J. Higgs.
Eggs : 1, Mr. G. Huskinson ; 2, Mr. C. Allwood.
Bees : 1, Mr. J. Higgs ; 2, Mr. W. Millington.
Honey, sections : 1, Mr. D. Gower ; 2, Mrs. Cartwright ; 3, Mr. T. Hill.
Honey, extracted : 1, Messrs. Gower and Higgs ; 2, Messrs. Coville and Millington.

SPECIAL PRIZE LIST.

1, Doncaster's Prize.—Ten round potatoes, six beans, ten peas, and six tripoli onions : 1, W. C. Millington ; 2, Rev. A. D. Hill.
2, Mills Bros. Prize.—Three window plants : 1, F. O. Green ; 2, R. Smith.
3, Wadsworth's Prize.—Four distinct varieties of vegetables (Classes B. and C.) : 1, W. C. Millington.
Best cultivated allotment under Parish Council : J. Upton.
Garden designs : Mr. D. Gower.

The Rev. E. B. Smith, Vicar of Kippax, Leeds, will take the duty for four Sundays, July 26th to August 16th, during the Rector's absence.

Whitsuntide has passed with fine weather. First the great Church festival in thanksgiving for the gift of God's Holy Spirit; then on Whit Monday the Oddfellows Society held their festival. It is a matter of regret to many of its members that more do not join in the bright short thanksgiving service in church on this morning. Even apart from the duty we all owe of thankfulness to God, it is a sign of weakness which is likely to tell on its numbers if the members of the Society do not voluntarily muster together as their rules bid them. On Whit-Tuesday the Band of Hope made a gallant show with its banners and the Keyworth Brass Band, and in the evening gave a concert in the Temperance Hall, in which we may specially notice the amusing action song by A. Manchester, B. Simpkin, and H. Ellis, and the pretty Maypole dance by the girls.

Time Table for East Bridgford of Trains to and from Nottingham, for July, 1908:—

Leave		Arrive Nottingham		Leave Nottingham.		Arrive	
Bingham.	Lowdham.	G.N.R.	M.R.	G.N.R.	M.R.	Bingham.	Lowdham.
—	7.0	—	7.22	5.25	—	5.48	—
7.30	—	7.53	—	—	6.0	—	6.19
—	7.51	—	8.16	7.15	—	7.38	—
8.20	—	8.44	—	—	7.20	—	7.39
—	8.25	—	8.46	*8.10	—	8.34	—
—	9.5	—	9.25	—	8.37	—	8.54
* 9.43	—	10.5	—	9.25	—	9.48	—
9.51	—	10.13	—	*10.24	—	10.47	—
—	10.5	—	10.24	—	11.15	<i>Wednesdays</i>	
10.49	<i>Saturdays</i>	11.9	—	—	11.25	—	11.46
11.54	—	12.18	—	11.50	—	12.13	—
—	11.19	—	11.42	—	12.45 <i>except Sat.</i>	—	1.3
—	1.35 <i>except Sat.</i>	—	1.55	—	1.5	—	1.24
*1.40	—	2.5	—	* 1.50	—	2.13	—
2.1	—	2.24	—	—	1.50	—	2.8
—	2.4	—	2.24	—	2.5 <i>except Sat.</i>	—	2.24
—	2.23	—	2.42	2.8	—	2.26	—
—	3.25 <i> Fridays</i>	—	3.40	2.43	—	3.6	—
*3.32	—	3.56	—	—	3.35	—	3.54
—	4.22	—	4.40	4.5 <i>Saturdays</i>	—	4.27	—
4.54	—	5.18	—	—	4.45	—	5.4
—	4.40	—	5.0	* 4.50	—	5.13	—
5.2	<i>Saturdays</i>	5.25	—	—	6.10	—	6.29
—	6.3 <i>Sat.</i>	—	6.25	6.15	—	6.38	—
—	6.29	—	6.49	—	6.40	—	6.59
6.44	—	7.8	—	—	7.45	—	8.4
—	7.44	—	8.4	7.35	—	7.58	—
8.36	—	9.0	—	8.50	—	9.13	—
9.0	—	9.24	—	—	9.20	—	9.38
—	9.42	<i>Saturday</i>	10.2	9.55	—	10.19	—
—	9.55 <i>except Saturday</i>	—	10.14	—	10.38 <i>except Thur. & Sat.</i>	—	10.56
—	10.15 <i>Saturday</i>	—	10.35	—	11.20 <i>Thur. & Sat.</i>	—	11.39
—	11.12 <i>except Thur. & Sat.</i>	11.30	—	11.0 <i>Saturdays</i>	—	11.24	—
SUNDAYS.							
9.15	—	9.41	—	8.27	—	8.52	—
—	12.41	—	1.0	—	10.5	—	10.24
3.10	—	3.33	—	11.40	—	12.4	—
4.55	—	5.18	—	2.10	—	2.33	—
—	6.59	—	7.19	—	2.45	—	3.4
—	8.12	—	8.33	6.13	—	6.36	—
8.35	—	9.0	—	—	8.10	—	8.29
—	—	—	—	9.57	—	10.20	—

*Newark trains.

N.B.—All the G.N.R. trains stop at London Road (High Level Station) as well as at the Victoria Station.

EAST BRIDGFORD MAGAZINE.



St. Peter's Church, East Bridgford.

Services.

HOLY COMMUNION:—

On all SUNDAYS (except 1st in Month) and HOLY DAYS at 8 a.m.
and after Morning Prayer on the First Sunday in the Month.

MORNING AND EVENING PRAYER:—

Sundays at 10.45, and 6.30 p.m.

Weekdays at 8 a.m. (Wednesday and Friday at 10), and 6.30 p.m. daily.

HOLY BAPTISM:—

First Sunday in month at 3, or at other Services on due notice.

CHURCHING OF WOMEN:—

Wednesday and Friday at 10, or before any Service on due notice.

SUNDAY SCHOOL:—

At 10 a.m. in the National School.

Children's Service and Catechizing in Church at 2.30.

The Managers of the East Bridgford National School have for some time past felt the necessity of rebuilding the out-offices and placing them further from the School, and have had plans of the building prepared. A plot of ground adjoining the School-yard has been generously conveyed to the Rector for that purpose by the President and Fellows of Magdalen College. H.M. Inspector, after his visit to the School last year, said, "The much needed alterations to the offices should be carried out without delay."

The Managers therefore propose to begin the building of the new offices, and the improvement of the playground during the summer holidays. They now ask for subscriptions for this purpose, which will require about £100. They have already received promises or subscriptions to the amount of £72 5s. including a grant from the Archidiaconal Board of £30 and £2 5s. from Parents of Children in the school, and they hope to receive more subscriptions, which will be acknowledged by the Rector, and a list will be printed.

We look upon our School as a Trust which we are bound to keep not only efficient, but as nice and comfortable as we can for the children, and we do not mean to be deterred from this duty, even by rumours of confiscation.

The School will close for the Harvest holidays on Friday, August 7th, and will re-open on Monday, September 7th. A week's holiday will also be given towards the end of October, to enable the children to be employed in potato gathering.

CRICKET CLUB Matches:—

May 2nd.	East Bridgford	21	Caythorpe	16
" 9th.	" "	32	Notts. Insurance Amateurs	43
" 16th.	" "	35	Orston	54
" 25th.	" "	61	Eastman's Ltd.	61
" 30th.	" "	45	Bingham	109
June 6th.	" "	101 for 8 wickets		Lowdham, P.S.E.	39
" 8th.	" "	39	Flintham	40
" 13th.	" "	67 for 7 wickets		Gunthorpe, 66 for 6 wkts. (innings declared)		
" 20th.	" "	54	Nottingham Brewery	67
" 23rd.	" "	42	Car Colston	50
" 27th.	" "	177 for 6 wickets		Caythorpe	59
" 29th.	" "	133	Nelson's Ltd.	35
" 30th.	" "	82	Mr. H. Hall's XI.	77
July 4th.	" "	33	Notts Insurance Amateurs	27
" 9th.	" "	97	St. Augustine's Institute	..	43
" 11th.	" "	128	County Asylum	58

EXTRACTS FROM PARISH REGISTERS.

BAPTISMS.

- June 28th John Alfred, son of George and Sarah Jane Ellis.
- " " Annie Elizabeth, daughter of William and Minnie Watson Swingler.
- July 5th George Wilfred, son of Joseph and Elsie Cox.
- " 12th Percy, son of Henry and Annie Crossland.
- " 17th Freda Luisa, daughter of John and Katherine Raynor.

MARRIAGE.

- June 29th. Alfred Charles Savage and Mary Lizzie Smith.

BURIALS.

- June 2nd Millicent Kirkland, aged 74 years.
- " 9th Thomas Thornton, aged 50 years.

Time Table for East Bridgford of Trains to and from Nottingham, for August, 1908 :—

Leave		Arrive Nottingham		Leave Nottingham.		Arrive	
Bingham.	Lowdham.	G.N.R.	M.R.	G.N.R.	M.R.	Bingham.	Lowdham.
		Victoria.		Victoria.			
—	7.0	—	7.22	5.25	—	5.48	—
7.30	—	7.53	—	—	6.0	—	6.19
—	7.51	—	8.16	7.15	—	7.38	—
8.20	—	8.44	—	—	7.20	—	7.39
—	8.25	—	8.46	*8.10	—	8.34	—
—	9.5	—	9.25	—	8.37	—	8.54
* 9.43	—	10.5	—	9.25	—	9.48	—
9.51	—	10.13	—	*10.24	—	10.47	—
—	10.5	—	10.24	—	11.15	<i>Wednesdays</i>	
10.49	<i>Saturdays</i>	11.9	—	—	11.25	—	11.28
11.54	—	12.18	—	—	—	—	11.46
—	11.19	—	11.42	11.50	—	12.13	—
<hr/>							
—	1.35 <i>except Sat.</i>	—	1.55	—	12.45 <i>except Sat.</i>	—	1.3
* 1.40	—	2.5	—	—	1.5	—	1.24
2.1	—	2.24	—	* 1.50	—	2.13	—
—	2.4	—	2.24	—	1.50	—	2.8
—	2.23	—	2.42	—	2.5 <i>except Sat.</i>	—	2.24
—	3.25 <i>Fridays</i>	—	3.40	—	2.18 <i>Sat. only</i>	—	2.39
* 3.32	—	3.56	—	2.8	—	2.26	—
—	4.22	—	4.40	2.43	—	3.6	—
4.54	—	5.18	—	—	3.35	—	3.54
—	4.40	—	5.0	4.5 <i>Saturdays</i>	—	4.27	—
5.2	<i>Saturdays</i>	5.25	—	—	4.45	—	5.4
—	6.3 <i>Sat.</i>	—	6.25	* 4.50	—	5.13	—
6.44	6.29	—	6.49	—	6.10	—	6.29
—	7.44	7.8	—	6.15	—	6.38	—
8.36	—	—	8.4	—	6.40	—	6.59
9.0	—	9.0	—	—	7.45	—	8.4
—	9.42	—	—	7.35	—	7.58	—
—	9.55 <i>except Saturday</i>	9.24	—	8.50	—	9.13	—
—	10.15 <i>Saturday</i>	—	10.2	—	9.20	—	9.38
—	11.12 <i>except Thur. & Sat.</i>	—	10.14	9.55	—	10.19	—
—	—	—	10.35	—	10.38 <i>except Thur. & Sat.</i>	—	10.56
—	—	—	11.30	—	11.20 <i>Thur. & Sat.</i>	—	11.39
				11.0 <i>Saturdays</i>	—	11.24	—
SUNDAYS.							
9.15	—	9.41	—	8.27	—	8.52	—
—	12.41	—	1.0	—	10.5	—	10.24
3.10	—	3.33	—	11.40	—	12.4	—
4.55	—	5.18	—	2.10	—	2.33	—
—	6.59	—	7.19	—	2.45	—	3.4
—	8.12	—	8.33	6.13	—	6.36	—
8.35	—	9.0	—	—	8.10	—	8.29
				9.57	—	10.20	—

*Newark trains.

N.B.—All the G.N.R. trains stop at London Road (High Level Station) as well as at the Victoria Station.

EAST BRIDGFORD MAGAZINE.



St. Peter's Church, East Bridgford.

Services.

HOLY COMMUNION:—

On all SUNDAYS (except 1st in Month) and HOLY DAYS at 8 a.m.
and after Morning Prayer on the First Sunday in the Month.

MORNING AND EVENING PRAYER:—

Sundays at 10.45, and 6.30 p.m.

Weekdays at 8 a.m. (Wednesday and Friday at 10), and 6.30 p.m. daily.

HOLY BAPTISM:—

First Sunday in month at 3, or at other Services on due notice.

CHURCHING OF WOMEN:—

Wednesday and Friday at 10, or before any Service on due notice.

SUNDAY SCHOOL:—

At 10 a.m. in the National School.

Children's Service and Catechizing in Church at 2.30.

On Sunday, August 16th, the Rev. E. B. Smith, who was acting as *locum tenens* during the Rector's absence, kindly undertook to hold a service for men at 3.30 in the afternoon which was well attended. A collection amounting to 9/5 was made for the Restoration Fund.

The Choir boys had their annual excursion, by the kindness of members of the congregation, to Skegness, on Thursday, August 27th, when fortunately the uncertain weather afforded a brilliant day.

LAWN TENNIS TOURNAMENT.—A very successful tournament was held on Saturday, August 22nd, in aid of the District Nursing Fund. The tournament was played on tennis courts lent by the following, who kindly provided tea for the players and spectators on their own courts, Miss Fox, Mrs. Hodges, Mrs. Jeffcock, Mrs. Moor, Mrs. Weatherell, Mrs. Woodsend, and Dr. Duff. The finals were played at The Hall between Miss Speed and Mr. S. Woodward, and Miss Oldrini and Mr. G. P. Mills, the former pair winning after a very closely contested match. Mrs. Moor afterwards presented the prizes. The financial result of the tournament was most gratifying, as about £10 will be handed over to the Nursing Fund. The arrangements were admirably made by Mr. C. Moor, who acted as Hon. Sec., assisted by a small committee.

Though we do not usually report political meetings in this magazine, yet the Fête arranged by the Conservative and Unionist Association, which took place in the garden of The Hall, at East Bridgford, on Thursday, July 30th, afforded pleasure to a great many people from this and the neighbouring villages, and should therefore be recorded. A long programme of athletic sports was arranged for competitors of all ages and sorts, the chief event being a "miniature Marathon" race of about a mile and a half round the village. It was won by H. Stanley, who received a silver cup given by Capt. Jeffcock, and a laurel wreath; the second and third places being gained by T. Fisher, of Shelford, and C. Wilkinson. The prizes for the races were presented by Miss Fox, to whom hearty thanks were given for the use of the grounds. The weather was most favourable.

CHURCH RESTORATION FUND.

	£	s.	d.
Amount acknowledged, May 1908..	187	1	4
A gift.....	0	5	0
Sale and Entertainment, April 30th.	18	6	1
Rectory Box.....	0	13	0
Feast Sunday, Collections in Church	2	14	2
Church Box to July 14th.	0	3	10
Collection at service Aug 15th. . .	0	9	5
Miss T. Fox	5	0	0
Church Box to Aug. 31st.	1	6	1

Total received, Sept. 1908. £1,899 18 11

The Treasurer is very thankful to be able to state that the debt on this fund is now reduced to about £99, and that in consequence we have no longer to pay the charges of an overdraft upon the Bank, the balance being now covered by the loan of £100 free of interest which is still continued.

We still have to remind our readers of this obligation which thus rests upon us who worship in East Bridgford church, and to hope that this debt may be still further reduced before the end of the year. Contributions may be sent to the Rector, or placed in the box at the Church door, or made at the Offertory on special occasions announced from time to time. The Thank-offerings on the Thursday evening on which we hold our Harvest Festival will be given to this fund.

Though the break in the weather during the latter half of August has hindered harvest operations, the general report from the corn-growing districts gives a good account of the character of the harvest this year.

Our Harvest Thanksgiving services will be held on the evening of Thursday, October 8th, and on the following Sunday. The Thankofferings will be on Thursday, for the Church Restoration Fund, and on Sunday, October 11th, for the Sunday School Fund.

We welcome Mr. W. A. Hodges and his family, who have come to reside amongst us during the past month, as the new owners of East Bridgford Hill.

EXTRACTS FROM PARISH REGISTERS.

BAPTISM.

July 27th Ruth, daughter of Charles and Hilda Catherine Moor.

MARRIAGE.

August 24th. Tom Collier and Jessie Chapman.



EAST BRIDGFORD MAGAZINE.



St. Peter's Church, East Bridgford.

Services.

HOLY COMMUNION:—

On all SUNDAYS (except 1st in Month) and HOLY DAYS at 8 a.m. and after Morning Prayer on the First Sunday in the Month.

MORNING AND EVENING PRAYER:—

Sundays at 10.45, and 6.30 p.m.

Weekdays at 8 a.m. (Wednesday and Friday at 10), and 6.30 p.m. daily.

HOLY BAPTISM:—

First Sunday in month at 3, or at other Services on due notice.

CHURCHING OF WOMEN:—

Wednesday and Friday at 10, or before any Service on due notice.

SUNDAY SCHOOL:—

At 10 a.m. in the National School.

Children's Service and Catechizing in Church at 2.30.

Our Harvest Thanksgiving Services will be held on Thursday, October 15th, and on the following Sunday, (not on October 8th, as stated in last month's magazine.) Helpers to decorate the church will be very welcome on Thursday morning, and flowers, fruit, etc., should be sent to the Rectory at 9 o'clock on that day. The preacher on the Thursday evening, October 15th, at 7.30, will be the Rev. Canon E. Hacking, Rector of Holmepierrepoint, and the Thank-offerings on that occasion will be devoted to the Church Restoration Fund.

On the Sunday following, October 18th, St. Luke's Day, in accordance with our custom for some years, the offerings will be given to the Sunday School Fund. This is such an important part of the "sowing and reaping" which has to be carried on in the parish, among boys and girls who are growing up, that there ought to be very few in our congregation at Church who are unwilling to take a share of the burden. If you cannot help in the actual work of the Sunday School, you can at least contribute your thank-offering towards the cost of it.

We are glad to hear that as a result of the successful Lawn Tennis Tournament on August 22nd, £10 has been paid to the East Bridgford District Nursing Fund, and £1 to the Invalid Loan Society, which is now superintended by Mrs. Clough.

The Annual Meeting of the British and Foreign Bible Society will be held at the Temperance Hall on Tuesday, October 13th, at 7 p.m. The Rector will take the chair, and the Rev. F. R. Pyper, Vicar of St. Andrew's, Nottingham, will address the meeting on behalf of the Society.

The "Palestine Exhibition," which proved very successful in London a year or two ago, is to be opened in the Drill Hall, Derby, from October 14th, to 29th, under the presidency of the Lord Bishop of Southwell. Prices of admission, 2.30 to 5.30 p.m. 1/-, 5.30 to 10 p.m. 6d., children under twelve half-price. Return tickets will be issued from Bingham, on presenting an admission ticket, at a fare and a quarter. The Rector will be glad to obtain tickets of admission for any who will apply to him for them.

On Monday, July 20th, some 25 members of King Edward Club, by the kindness of Mr. and Mrs. Cartwright and Miss Fox, were enabled to make an excursion to London. It was quite a new experience to many of them, and the lively views of the metropolis from the bus-tops, and especially the attractions of the "White City" Exhibition, made the day very enjoyable. The members of the Club highly appreciated the opportunity which was thus afforded them.

A Jumble Sale was held on Saturday evening, September 19th, for the purpose of raising funds towards the provision of a new heating apparatus for the Temperance Hall. The proceeds amounted to over £9.

East Bridgford, on September 12th, was again the scene of a Fête, this time arranged by the Liberal Association. Sports and entertainments were followed by tea, in a tent erected on the Cricket ground. The weather was favourable and the number of those present was large.

The School Buildings have been much improved during the holidays by the erection of new out-offices, upon land kindly given to the Rector for that purpose by Magdalen College. The Managers desire to acknowledge with thanks the following contributions to the building fund. It is highly satisfactory to have a long list of supporters, and especially of parents of children in the school; and it will be noticed that the Board of Education for the Archdeaconry of Notts, which always helps those who help themselves, has given us a generous grant. The Managers of the School ask for about £10 more, that they may carry out some necessary improvements in the school play-ground and entrances before the winter comes. Subscriptions may be sent to the Rector.

Subscriptions to School Building Fund:—

		£	s.	d.			£	s.	d.
Diocesan Board of Education	..	30	0	0	Mrs Poole	2	0
Betton's Charity	..	10	0	0	Mrs Cheetham	2	0
The Earl of Carnarvon	..	5	0	0	Mr Gower	2	0
Mr and Mrs Cartwright	..	5	0	0	Mr J. Upton, jun.	2	0
Miss Fox	10	0	0	Mr R. Swanwick	2	0
Rev. A. D. and Mrs Hill	..	10	0	0	Mr Wombwell	1	6
Mr J. W. Woodsend	5	0	0	Mr G. Ellis	1	0
Rev. E. P. Weatherell	2	0	0	Mr G. Ellis, jun.	1	0
Mrs. Tomlinson	2	0	0	Mrs Wilkinson	1	0
Mr J. Wilkinson	10	0	0	Mr T. Smith	1	0
Mr J. S. Wilkinson	10	0	0	Mr Kirkham	1	0
Mr C. Moor	10	0	0	Mr Wood	1	0
Mr C. Allwood	10	0	0	Mr Simpkin	1	0
Mr R. Jones	10	0	0	Mr R. Upton	1	0
Messrs. Gell	10	0	0	Mr J. Cooper	1	0
Mr G. Huskinson	5	0	0	Mr C. Baldock	1	0
Mrs Cuthbert	3	0	0	Mr J. Clegg	1	0
Mr C. Millington	2	6	0	Mr G. Manchester	1	0
Mr W. Green	2	6	0	Mr G. Wilsdon	1	0
Mrs B. Mason	2	6	0	Mr W. Pritchett	1	0
Mr Harrison	2	6	0	Mr C. Bullers	1	0
Nurse Musson	2	6	0	Mr J. Smart	1	0
Mr H. Forrest	2	6	0	Mrs Hunt	1	0
Mr E. Coville	2	6	0					
Mrs Wilks..	..	2	6	0					
Mr Breedon	2	0	0					

CRICKET CLUB.—During the past season 25 matches have been played, resulting in 13 wins, 9 losses, and 3 drawn games. The following have been played since the last report in the August magazine :—

July 18th....	East Bridgford42	Nottingham Brewery....	35
„ 23rd....	„	81 for 4 wickets	Notts Unity XI.....	80
Aug. 1st....	„	114 for 9 wickets	Gunthorpe 95 for 2 wickets	
„ 3rd....	„93	Mr. Bentley's XI.	157
„ 8th....	„ 71	Lowdham P.S.E. 72 for 9 wkts.	
„ 13th....	„ 100	Shelford	90
„ 24th....	„ 139	Nelson, Ltd.	78
„ 29th....	„	127 for 7 wickets	Orston.....	36
Sept. 5th....	„ 123	Bingham.....	67
„ 10th....	„	25 for 3 wickets	Flintham.....	32

FOREIGN MISSIONS.—The annual collections for the Society for the Propagation of the Gospel in Foreign Parts will be made on Sunday, November 1st, and the meeting will be held on the following Tuesday, in the Temperance Hall.

The Old Age Pensions Act of 1908, will come into force on January 1st, 1909, and forms on which to make claims and information, can now be obtained at the Post Office. The following are some of the provisions of the Act put shortly, so far as they apply to a country parish.

Those who may receive a pension are, persons who are 70 years old, and who are not receiving poor relief (except Medical assistance), and to be entitled to the full pension of 5s. a week, who have, besides their pension under this Act, not more than £21 a year (8s. 2d. a week); but if they have between £21 and £31 10s. a year (12s. 2d. a week), they may receive a pension reduced according to a scale from 4s. to 1s. a week.

The following are not entitled to any pension: Those who are under 70; those who have more than £31 10s. a year; those who are receiving poor relief (except medical assistance); those who habitually would not work when they had the opportunity; prisoners; those who may be disqualified under the Inebriates Act.

It should be observed that it does not affect the claim if the poor relief has been received some time ago, but if it has been received since January, 1908, no pension will be given till the end of 1910.

In the case of a married couple living together, each one of them is to be considered as possessing not less than half their joint income.

There are severe penalties against false statements.

The Act is to be carried out not through the relieving officer, but by a Special Committee and a Pensions Officer.

The Rector will gladly supply any information as to age, that it may be in his power to give from the Baptismal Registers.

EXTRACTS FROM PARISH REGISTERS.

BURIALS.

Sept. 1st. At Shelford. Maria Hall, aged 83 years.
 „ 22nd. Rose Lavinia Gregg, aged 8 months.

EAST BRIDGFORD MAGAZINE.



St. Peter's Church, East Bridgford.

Services.

HOLY COMMUNION:—

On all SUNDAYS (except 1st in Month) and HOLY DAYS at 8 a.m. and after Morning Prayer on the First Sunday in the Month.

MORNING AND EVENING PRAYER:—

Sundays at 10.45, and 6.30 p.m.

Weekdays at 8 a.m. (Wednesday and Friday at 10), and 6.30 p.m. daily.

HOLY BAPTISM:—

First Sunday in month at 3, or at other Services on due notice.

CHURCHING OF WOMEN:—

Wednesday and Friday at 10, or before any Service on due notice.

SUNDAY SCHOOL:—

At 10 a.m. in the National School.

Children's Service and Catechizing in Church at 2.30.

HARVEST FESTIVAL.—In the beautiful weather that has marked the Autumn of this year, we have held our Harvest Thanksgiving Services. On Thursday evening, at 7.30, the Church was filled, and Canon E. Hacking, Rector of Holmepierrepont, preached on the duty of Praising God, not only on the special occasion of our Festival, but in all our lives. On Sunday, Oct. 18th, (S. Luke's) the Holy Eucharist was celebrated at 8 o'clock, and the Rev. Joseph Barker, D.D., preached at both morning and evening services to large congregations, especially in the evening, when many extra seats had to be brought in, and it was difficult to find room for all. The Choir sang at the Services the sweet little anthem by Dr. Green "Thou visitest the earth," from Ps. lxxv. 9, 12. The Thank-offerings contributed at these Services were on Thursday, for the Church Restoration Fund, £3 19s. 11½d., and on Sunday, for the Sunday School Fund, £6 11s. 7d., making a total of £10 11s. 6½d.

FOREIGN MISSIONS.—The annual sermons will be preached on behalf of Foreign Missions on Sunday, November 1st, as already announced. In the morning the Rev. A. T. Smith, from Auckland, New Zealand, will preach. On the following Thursday, November 5th, he will give an address at a meeting in the Temperance Hall, at 7 p.m. Do let us all help each other, as well as Foreign Missions, by coming to this meeting. More than ever, now that attention has been stirred by the Pan-Anglican Conference this year, we are called to learn all we can about the vast duties and responsibilities laid upon the Church in the World. Our Bishop said on this subject in his address at the Diocesan conference on October 20th, "To-day we have a wider and clearer vision and understand somewhat better the position of the Anglican Communion in the World. It was not that we heard of wonderful successes or of great power; nay, we were humbled to the dust, but we saw visions of great opportunities and heard very distinctly the call given to us by God at this moment, whilst we were inspired by the simple witness given by men and women to the living force of the Word of God Incarnate. The very forcefulness of the Lambeth and Pan-Anglican meetings has thrown upon us all a tremendous responsibility; for the question now remains, not what they have accomplished, but what they are going to accomplish, and the answer lies in our hands. Remember that; not in God's hands alone, but in ours."

The S.P.G. Women's Work Department has lately been organized under the Bishop's direction in the Deaneries of the Diocese of Southwell, and a meeting of the Parochial representatives of our Bingham Deanery was held at East Bridgford Rectory on October 7th. Miss N. Duffin is appointed collector and representative for our parish. Beside the general support of the S.P.G., the Women Workers have undertaken the maintenance of a lady Doctor in the Diocese of Shang-tung in China.

On Wednesday, October 21st, a party of thirty, including the Sunday School Teachers and sixteen children who have been diligent in writing Analyses of the Catechism Instructions, at the invitation of the Rector, visited the Palestine Exhibition at Derby. Our party found it most interesting and instructive, and only wished they had had time to attend one of the illustrated lectures on the Manners and Customs of the Jews, given in the evening.

THE MOTHERS' MEETINGS will begin on Wednesday, November 4th, at 2 p.m., at the Rectory.

G.F.S.—Meetings are now being held on Mondays, at 6.30 p.m., at the Rectory.

THE CHORAL SOCIETY holds its practices on Wednesday evenings at 7.30, in the Temperance Hall, and at present is learning "The Bride of Dunkerron," a Cantata by H. Smart.

THE DAY and Sunday Schools have been closed since October 9th, on the order of the District Sanitary Authority on account of the occurrence of some cases of fever among the children. We hope that timely precautions have checked its progress and are thankful that the cases have not proved more serious. The Schools are re-opened in November.

A presentation was made on September 30th by the Children, Teachers and Managers of the School to Miss F. J. Sharp, on her resignation of her post as Teacher, with a hearty expression of good wishes on her approaching marriage. Miss Harriet Walker has been appointed as Uncertificated Teacher and Miss Evelyn Bateman as Temporary Monitor.

THE BIBLE SOCIETY'S Annual Meeting was held on October 13th and was very fairly attended. The Rector was in the chair and introduced the Rev. F. R. Pyper, Vicar of S. Andrew's, Nottingham, who made an excellent address on behalf of the work of the Society. A vote of thanks was proposed by the Rev. Dr. Barker and seconded by Mr. J. Wilkinson. Miss M. Clough, Secretary, presented her report showing subscriptions already received, £5 14s. 4½d., and a collection of £3 9s. 9d., was made in the room.

At the October Church Council Meeting it was thought desirable that attention should be called to a resolution passed at the Easter Vestry in 1896, as follows:—"That whereas the Churchwardens during their year of office may assign seats in Church to habitual attendants, at the Sunday morning and evening services, any seat which is unoccupied at the hour fixed for the commencement of any service shall not be considered as reserved."

CHURCH ARMY.—A mission van, under Captain Oliver and his assistant, will pay a visit to East Bridgford for about ten days, probably beginning Nov. 19th. Meetings will be held in the Temperance Hall every evening on which the hall is disengaged, except on Saturday. Will you help to make them welcome, by receiving their visits, responding to their invitations and listening to the simple earnest message they come to bring? They are Churchmen, whose one desire is to arouse and instruct working men and women in the way of salvation. We pray God, and ask others to pray, that such efforts may bring good and lasting results in the lives of us all.

EXTRACTS FROM PARISH REGISTERS.

BAPTISMS.

- Sept. 25th. Dorothy Annie, daughter of Frank and Mary Elizabeth Waterfield.
Oct. 18th. Florence Elizabeth, daughter of George William and Mabel Elizabeth Avery.

MARRIAGES.

- Oct. 13th. Tom Brown and Frances Jane Sharp.
" 24th. William Thompson and Ellen Laverick Clark.

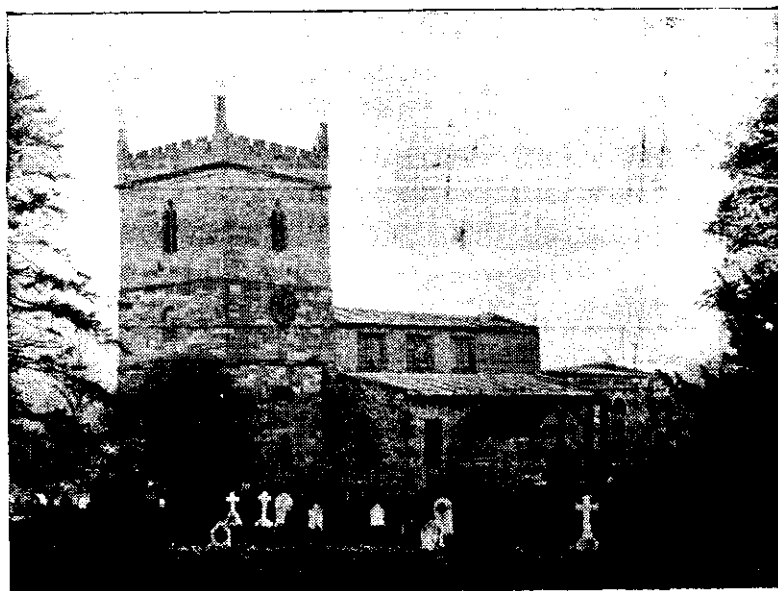
Time Table for East Bridgford of Trains to and from Nottingham, for November, 1908 :—

Leave Bingham.	Leave Lowdham.	Arrive Nottingham		Leave Nottingham.		Arrive Bingham.	Arrive Lowdham.
		G.N.R. Victoria.	M.R.	G.N.R. Victoria.	M.R.		
—	7.0	—	7.22	5.25	—	5.48	—
7.30	—	7.53	—	—	6.0	—	6.19
—	7.51	—	8.16	7.15	—	7.38	—
8.20	—	8.44	—	—	7.20	—	7.39
—	8.25	—	8.46	*8.10	—	8.34	—
—	9.5	—	9.25	—	8.37	—	8.54
* 9.43	—	10.5	—	9.25	—	9.48	—
9.51	—	10.13	—	*10.24	—	10.47	—
—	10.5	—	10.24	—	11.15	<i>Wednesdays</i>	11.28
10.49	<i>Saturdays</i>	11.9	—	—	11.25	—	11.46
11.54	—	12.18	—	11.50	—	12.13	—
—	11.19	—	11.42	—	12.45 <i>except Sat.</i>	—	1.3
—	1.35 <i>except Sat.</i>	—	1.55	—	1.5	—	1.24
*1.40	—	2.5	—	* 1.50	—	2.13	—
2.1	—	2.24	—	—	1.50	—	2.8
—	2.4	—	2.24	—	2.5	—	2.24
—	2.23	—	2.42	2.8	—	2.26	—
—	3.25 <i>Fridays</i>	—	3.40	2.43	—	3.6	—
*3.32	—	3.56	—	—	3.42	—	4.1
—	4.22	—	4.40	4.5 <i>Saturdays</i>	—	4.27	—
4.54	—	5.18	—	—	4.45	—	5.4
—	4.40	—	5.0	* 4.50	—	5.13	—
5.2	<i>Saturdays</i>	5.25	—	—	6.10	—	6.29
—	6.29	—	6.49	6.15	—	6.38	—
6.44	—	7.8	—	—	6.40	—	6.59
—	7.44	—	8.4	—	7.45	—	8.4
*8.48	—	9.12.	—	7.40	—	8.6	—
9.10	—	9.34	—	8.50	—	9.13	—
—	9.42	<i>Saturday</i>	10.2	—	9.20 <i>except Sat.</i>	—	9.39
—	9.55 <i>except Saturday</i>	—	10.14	9.55	—	10.19	—
—	10.15 <i>Saturday</i>	—	10.35	—	10.38 <i>except Thur. & Sat.</i>	10.56	—
—	11.12 <i>except Thurs. & Sats.</i>	—	11.30	—	11.20 <i>Thur. & Sat.</i>	11.39	—
—	—	—	—	11.0 <i>Saturdays</i>	—	11.24	—
SUNDAYS.							
—	12.41	—	1.0	—	10.5	—	10.24
3.10	—	3.33	—	11.40	—	12.4	—
4.55	—	5.18	—	2.10	—	2.33	—
—	6.59	—	7.19	6.13	—	6.36	—
8.35	—	9.0	—	—	8.10	—	8.29
—	—	—	—	9.57	—	10.20	—

*Newark trains.

N.B.—All the G.N.R. trains stop at London Road (High Level Station) as well as at the Victoria Station.

EAST BRIDGFORD MAGAZINE.



St. Peter's Church, East Bridgford.

Services.

HOLY COMMUNION:—

On all SUNDAYS (except 1st in Month) and HOLY DAYS at 8 a.m. and after Morning Prayer on the First Sunday in the Month.

MORNING AND EVENING PRAYER:—

Sundays at 10.45, and 6.30 p.m.

Weekdays at 8 a.m. (Wednesday and Friday at 10), and 6.30 p.m. daily.

HOLY BAPTISM:—

First Sunday in month at 3, or at other Services on due notice.

CHURCHING OF WOMEN:—

Wednesday and Friday at 10, or before any Service on due notice.

SUNDAY SCHOOL:—

At 10 a.m. in the National School.

Children's Service and Catechizing in Church at 2.30.

ADVENT 1908.—The ten days' Mission conducted by the Church Army began on Thursday, November 26th, a celebration of the Holy Communion having taken place in Church on that morning. Captain Oliver and his helper, Mr. Day, have started on their serious undertaking.

Each evening a lantern service or address is held in the Temperance Hall at 7.30, except on Saturday, Nov. 28th, and Friday, Dec. 4th. A special meeting is arranged for Children on November 27th, at 6.15, and on Sunday evenings an address is given after evening service. By the Bishop's permission, Captain Oliver is allowed to hold afternoon services as Lay-reader in Church, for Women on Nov. 29th and for Men on Dec. 6th. A closing meeting will take place in Church on Monday, Dec. 7th, at 7.30 p.m.

These arrangements are recorded here, though by the time the Magazine is in its readers' hands, the Mission will probably be over. But we hope and pray that the results will only be beginning, and those who have been forgetful of their Christian obligations will have made an effort to renew their Baptismal vows; those who have fallen will have thought of the possibility of rising; those who are strong will have begun to look for new opportunities of active service for God.

This may be regarded by us all as part of the Advent call, "awake thou that sleepest, and, arise from the dead, and Christ shall give thee light." And as we come to the great festival of Christmas, let us more than ever think of Him, who came down from Heaven and took our human nature at the first Christmas, to bring grace and strength into our human lives.

There will be Advent services with addresses on Wednesday evenings, December 9th, 16th and 23rd, at 7 o'clock.

CHRISTMAS DAY.—The Holy Communion will be celebrated at 8 and at Mid-day. Morning prayer at 10.45 and Evening prayer at 7. The Alms will be given to the Church Restoration Fund.

On Dec. 27th, the first Sunday after Christmas, the Celebration of Holy Communion will be at 7 a.m., and on New Year's day, Friday, at 8 a.m.

With this number of the Magazine we complete our tenth annual volume. It is a record of many efforts and schemes, of lives begun and ended, of many events which go to make up village life, and it seems, by its circulation of nearly 200 each month, to be appreciated. It does not quite pay its way, as a loss of about 5/- a year on the average has to be defrayed. Perhaps a few subscribers will be willing to pay a little more than the 1/- a year which is the charge made for the magazine. Against this deficiency we ought to reckon the expense saved by printing various accounts, which if not inserted in the Magazine would have to be printed separately.

Our New Year's tea will take place on Tuesday, Jan. 5th, 1909, when all parishioners and friends are invited. Tea will be laid at 5 p.m. in the Temperance Hall at 6d. a head, and for those who may find it convenient to come later, at 5.45. Children not in charge of their parents will not be admitted till 5.45. Parents with their children can obtain a family ticket for 1/6. An entertainment will follow at 7 p.m. Admission 3d. to those who have not taken a ticket for the tea. Any proceeds which may arise will be given to the Church Restoration Fund.

FOREIGN MISSIONS S.P.G.—A Sermon was preached on Sunday morning, Nov. 1st, by the Rev. A. F. Smith, of the Society for the Propagation of the Gospel, on behalf of Missionary work and on Thursday, Nov. 5th, a meeting was held in the Temperance Hall. The Rev. A. F. Smith, who came to England as a delegate to the Pan-Anglican Congress from New Zealand, gave a very vivid and interesting lecture on his work in the Diocese of Auckland, partly among Colonists and partly among Maoris. The Rector presided and Mr. W. A. Hodges proposed a vote of thanks to the speaker, which was seconded by Mr. Turner, and very heartily acknowledged by the audience. The collections for the S.P.G. at the services on Sunday amounted to £4 4s. 9d. and at the Meeting £1 11s. 0d.

A leaflet is inserted in this number, reminding us of the excellent work carried on by the Church of England Waifs and Strays Society. It may be that some of our readers will like to share their Christmas happiness with some of these homeless children. The Rector will be glad to send any gifts to the Society that may be entrusted to him.

The Inspection of the school in Religious Knowledge, will be held on Thursday morning, Dec. 17th, by the Rev. T. W. Swann.

The East Bridgford Temperance Society announce the following meetings and addresses:—Dec. 1st in conjunction with the Church Army, Captain Oliver. Dec. 22nd, Rev. F. P. Downman. Jan. 12th, 1909, Mr. John Walker (Lantern Lecture).

EXTRACTS FROM PARISH REGISTERS.

BAPTISMS.

- Oct. 31st. Thomas, son of Thomas and Rebecca Ellis.
Nov. 1st. Sylvia Nellie, daughter of John Henry and Alice Marguerite Gray.
" 15th. Charles Bellamy, son of Arthur Bellamy and Bertha Shipman.
" 22nd. Beatrice Queenie, daughter of Stanley and Annie Seward.

MARRIAGE.

- Oct. 31st. At Headington, Oxfordshire. Harry Stanley and Mabel Alice Webb.

BURIALS.

- Nov. 2nd. Thomas Ellis, aged 6 months.
" 13th. George Huskinson, aged 57 years.

Time Table for East Bridgford of Trains to and from Nottingham, for December, 1908 :—

Leave Nottingham.		Arrive Nottingham.		Leave Nottingham.		Arrive Nottingham.	
Bingham.	Lowdham.	G.N.R. Victoria.	M.R.	G.N.R. Victoria.	M.R.	Bingham.	Lowdham.
—	7.0	—	7.22	5.25	—	5.48	—
7.30	—	7.53	—	—	6.0	—	6.19
—	7.51	—	8.16	7.15	—	7.38	—
8.20	—	8.44	—	—	7.20	—	7.39
—	8.25	—	8.46	*8.10	—	8.34	—
—	9.5	—	9.25	—	8.37	—	8.54
* 9.43	—	10.5	—	9.25	—	9.48	—
9.51	—	10.13	—	*10.24	—	10.47	—
—	10.5	—	10.24	—	11.15	Wednesdays	11.28
10.49	Saturdays	11.9	—	—	11.25	—	11.46
11.54	—	12.18	—	11.50	—	12.13	—
—	11.19	—	11.42	—	12.45 except Sat.	—	1.3
—	1.35 except Sat.	—	1.55	—	1.5	—	1.24
*1.40	—	2.5	—	* 1.50	—	2.13	—
2.1	—	2.24	—	—	1.50	—	2.8
—	2.4	—	2.24	—	2.5	—	2.24
—	2.23	—	2.42	2.8	—	2.26	—
—	3.25 Fridays	—	3.40	2.43	—	3.6	—
*3.32	—	5.56	—	—	3.42	—	4.1
—	4.22	—	4.40	4.5 Saturdays	—	4.27	—
4.54	—	5.18	—	—	4.45	—	5.4
—	4.40	—	5.0	* 4.50	—	5.13	—
5.2 Saturdays	—	5.25	—	—	6.10	—	6.29
—	6.29	—	6.49	6.15	—	6.38	—
6.44	—	7.8	—	—	6.40	—	6.59
—	7.44	—	8.4	—	7.45	—	8.4
*8.48	—	9.12.	—	7.40	—	8.6	—
9.10	—	9.34	—	8.50	—	9.13	—
—	9.42	Saturday	10.2	—	9.20 except Sat.	—	9.39
—	9.55 except Saturday	—	10.14	9.55	—	10.19	—
—	10.15 Saturday	—	10.35	—	10.38 except Thur. & Sat.	—	10.56
—	11.12 except Thurs. & Sats.	—	11.30	—	11.20 Thur. & Sat.	—	11.39
—	—	—	—	11.0 Saturdays	—	11.24	—
SUNDAYS.							
—	12.41	—	1.0	—	10.5	—	10.24
3.10	—	3.33	—	11.40	—	12.4	—
4.55	—	5.18	—	2.10	—	2.33	—
—	6.59	—	7.19	6.13	—	6.36	—
8.35	—	9.0	—	—	8.10	—	8.29
—	—	—	—	9.57	—	10.20	—

*Newark trains.

N.B.—All the G.N.R. trains stop at London Road (High Level Station) as well as at the Victoria Station.