

EAST BRIDGFORD MAGAZINE.



St. Peter's Church, East Bridgford.

Services.

HOLY COMMUNION :—

On all SUNDAYS (except 1st in Month) and HOLY DAYS at 8 a.m.
and after Morning Prayer on the First Sunday in the Month.

MORNING AND EVENING PRAYER :—

Sundays at 10.45, and 6.30 p.m.

Weekdays at 8 a.m. (Wednesday and Friday at 10), and 6.30 p.m. daily.

HOLY BAPTISM :—

First Sunday in month at 3, or at other Services on due notice.

CHURCHING OF WOMEN :—

Wednesday and Friday at 10, or before any Service on due notice.

SUNDAY SCHOOL :—

At 10 a.m. in the National School.

Children's Service and Catechizing in Church at 2.30.

CHRISTMAS DAY—with its holy thoughts and its happy associations has passed. The Services seemed bright and well attended. The alms at the Christmas Day Services, for the Church Restoration Fund, amounted to £6 16s. 8d. The weather which has been so very dull, foggy, and mild, at last became cold and bright: but on December 29th the long expected snow began to fall.

On the Sunday after Christmas, the Anthem by *Stainer*, “O Zion that bringeth forth good tidings,” Is. xl. 9., was sung at the morning and evening Services.

AND now we enter upon a New Year, and have to learn with difficulty to write 1909. The past always clings to us, but with a New Year we may make a new start. Let us think of our resolutions in the past, and remember that the progress we can achieve depends upon our *will*, by which we make use of the Divine power and grace given to us. Many of us have reason to remember with thankfulness the help of the Church Army Mission last Advent: may that thankfulness continue to be shewn in action, for then we shall indeed find the reality of the wish we express to one and all, *A Happy New Year*

In response to a desire that has been expressed by several men, I propose to hold upon one Sunday afternoon in each month, a Men's Service, in Church; and I invite all over 16 to come on Sunday, January 24th, at 3 o'clock, to the Opening Service. We can then consider the best day and hour to suit the convenience of all. I hope there will be not a few who will be willing to co-operate in an earnest endeavour to carry out a plan of mutual help, bible-reading, and effort in religion, by coming themselves and getting others to come with them.

A. D. HILL.

THE School was examined on December 17th, by the Rev. T. W. Swann, Diocesan Inspector of Religious Knowledge, who has just sent the following excellent report:—

“A large area of work has been covered since last inspection. In the elder class the character of the knowledge is good. I was glad to find that Syllabus F. (Diocesan Standard VI. Syllabus) had been prepared, and evidently interested the children. Division II. has made great improvement. The eagerness of the children to answer questions pleased me greatly. Attention is needed as regards the spelling. The Infants, as usual, are very bright, and answered readily.”

THOS. W. SWANN,
Diocesan Inspector.

The School Managers desire to acknowledge additional contributions to the School building fund, and to present the subjoined balance sheet showing the expenditure already incurred. It should be mentioned that the architect's fees include some alterations carried out two or three years ago. The balance in hand will be applied to the proposed improvement of the playground, and the Managers hope that the further contributions necessary for carrying this out, will be readily made, as the playground is in serious need of improvement, and re-laying with gravel.

Subscriptions already acknowledged, £44 18s. 6d.; Additional Subscriptions received from Mr. H. W. Mason, 5/-; Mr. F. Hine, £1 1s. 0d.; Mr. J. Fletcher, 3/-; H.J.M., 10/-; Mr. W. Richardson, 5/-; Mr. Jas. Fox, 10/-.

SCHOOL BUILDING FUND BALANCE SHEET.

Receipts.	£ s. d.	Expenditure.	£ s. d.
Diocesan Board of Education	10 0 0	Cost of Conveyance of Site	3 10 0
Betton's Charity (Church Schools)	10 0 0	Mr. J. Walker	75 3 0
Subscriptions	47 12 6	Messrs. Calvert & Gleave (Architects)	6 6 0
Rent of Allotment	1 15 4	Balance in Hand	4 8 10
	£89 7 10		£89 7 10

ON Tuesday, December 22nd, a muffled peal of grandsire doubles was rung as a mark of respect to one of our band of ringers, Claude Wilkinson, whose death we record, with deep regret and sympathy with his family, in this number of the Magazine. He had taken a keen interest in learning the method of scientific change ringing which has lately been accomplished by our Ringers.

THE East Bridgford Temperance Society call attention to a Lantern Lecture to be given on Tuesday, January 12th, by Mr. John Walker.

THE Quarterly Meeting of the Mothers' Union will be held in the Temperance Hall, on the evening of Thursday, January 21st, and will take the form of a Lantern Lecture by the Rector, on the work and aims of the Union. On this occasion the invitations will be extended to the husbands and friends of Members of the Mothers' Union, and Mr. Turner Lee will give an Address.

THE East Bridgford Magdala Football Club has arranged the following matches for January:—Jan. 2nd, Farndon; 9th, Netherfield Baptists; 16th, Wakes and Lamb*; 23rd, Hoveringham; 30th, Bingham*. [*Played at East Bridgford.]

THE Band of Hope Christmas Concert took place on Monday, Dec. 28th. An interesting programme was presented, including Romberg's Toy Symphony; and Part 2 consisted of an amusing operetta called “Jack Frost.”

BAPTISM.

December 20th Cicely Hannah, daughter of George and Annie Elizabeth Crossland.

BURIALS.

December 7th Beryl Walker, aged 16 months.
 „ 22nd Claude Wilkinson, aged 39 years.

Time Table for East Bridgford of Trains to and from Nottingham, for January, 1909

Leave		Arrive Nottingham		Leave Nottingham		Arrive	
Bingham.	Lowdham.	G.N.R. Victoria.	M.R.	G.N.R. Victoria.	M.R.	Bingham.	Lowdham.
—	7.0	—	7.22	5.25	—	5.48	—
7.30	—	7.53	—	—	6.0	—	6.19
8.20	7.51	—	8.16	7.15	—	7.38	—
—	8.25	8.44	—	—	7.20	—	7.39
—	9.5	—	8.46	*8.10	—	8.34	—
* 9.43	—	—	9.25	—	8.37	—	8.54
9.51	—	10.5	—	9.25	—	9.48	—
—	10.5	10.13	—	*10.24	—	10.47	—
10.49	<i>Saturdays</i>	—	10.24	—	11.15	<i>Wednesdays</i>	11.28
—	11.19	11.9	—	—	11.25	—	11.46
11.54	—	—	11.42	11.50	—	12.13	—
—	1.35 <i>except Sat.</i>	—	1.55	—	12.45 <i>except Sat.</i>	—	1.3
*1.40	—	2.5	—	—	1.5	—	1.24
2.1	—	2.24	—	* 1.50	—	2.13	—
—	2.4	—	2.24	—	1.50	—	2.8
—	2.23	—	2.42	—	2.5	—	2.24
—	3.25 <i>Fridays</i>	—	3.40	2.8	—	2.26	—
*3.32	—	3.56	—	2.43	—	3.6	—
—	4.22	—	4.40	—	3.42	—	4.1
4.54	—	5.18	—	4.5 <i>Saturdays</i>	—	4.27	—
—	4.40	—	5.0	—	4.45	—	5.4
5.2	<i>Saturdays</i>	5.25	—	* 4.50	—	5.13	—
—	6.29	—	6.49	—	6.10	—	6.29
6.44	—	7.8	—	6.15	—	6.38	—
—	7.44	—	8.4	—	6.40	—	6.59
*8.48	—	9.12	—	—	7.45	—	8.4
9.10	—	9.34	—	7.40	—	8.6	—
—	9.42	<i>Saturday</i>	10.2	8.50	—	9.13	—
—	9.55 <i>except Saturday</i>	—	10.14	—	9.20 <i>except Sat.</i>	—	9.39
—	10.15 <i>Saturday</i>	—	10.35	9.55	—	10.19	—
—	11.12 <i>except Thurs. & Sats.</i>	—	11.30	—	10.38 <i>except Thur. & Sat.</i>	10.56	—
—	—	—	—	—	11.20 <i>Thur. & Sat.</i>	11.39	—
—	—	—	—	11.0 <i>Saturdays</i>	—	11.24	—

SUNDAYS.							
—	12.41	—	1.0	—	10.5	—	10.24
3.10	—	3.33	—	11.40	—	12.4	—
4.55	—	5.18	—	2.10	—	2.33	—
—	6.59	—	7.19	6.13	—	6.36	—
8.35	—	9.0	—	—	8.10	—	8.29
—	—	—	—	9.57	—	10.20	—

*Newark trains.

N.B.—All the G.N.R. trains stop at London Road (High Level Station) as well as at the Victoria Station.

EAST BRIDGFORD MAGAZINE.



St. Peter's Church, East Bridgford.

Services.

HOLY COMMUNION:—

On all SUNDAYS (except 1st in Month) and HOLY DAYS at 8 a.m.
and after Morning Prayer on the First Sunday in the Month.

MORNING AND EVENING PRAYER:—

Sundays at 10.45, and 6.30 p.m.

Weekdays at 8 a.m. (Wednesday and Friday at 10), and 6.30 p.m. daily.

HOLY BAPTISM:—

First Sunday in month at 3, or at other Services on due notice.

CHURCHING OF WOMEN:—

Wednesday and Friday at 10, or before any Service on due notice.

SUNDAY SCHOOL:—

At 10 a.m. in the National School.

Children's Service and Catechizing in Church at 2.30.

OUR PARISH TEA, on Tuesday, Jan. 5th, was attended by fully 300 people, the largest number we have ever had. The tea tables were provided by Mrs. Barker, Miss Fox, Mrs. Hill, Mrs. Hodges, Mrs. Lee and Mrs. Chandley, Mrs. Turner, and Mrs. Woodsend.

At the entertainment which as usual followed at 7 p.m., a limelight exhibition was given, of a Christmas tale called "Davie's Sacrifice," and a series of beautiful views kindly lent by Mr. A. Woodsend from his collection of his own photographs in Switzerland, Norway, the lakes and elsewhere. Mr. Goldston gave a humorous reading "On strike." Mr. Waterfield, Mr. R. Wilkinson, and Miss F. Bateman each contributed two songs, and Messrs. F. Wilkinson, D. Hallam, A. Upton, R. Blagg and the Rector gave two performances on the handbells. The net proceeds after paying expenses amounted to £5 10s., for the Church Restoration Fund.

The Church Sunday School and members of the Sunday afternoon catechism were entertained at tea on Thursday, Jan. 7th, making a party of 96. The prizes and Christmas gifts were presented and a lantern exhibition followed.

In the Day School the Rector's prizes for excellence in Religious Knowledge have been awarded to Arthur Kemp and Gertrude Poole in class I; Grace Saward and Reggie Wilkinson in class II; and Gertrude Dent and Dickie Waterfield in class III.

Our sympathies have been deeply stirred by the accounts of the terrible earthquake in Italy and Sicily on the morning of Dec. 28th, and on Sunday evening, Jan. 17th, a collection was made on behalf of the sufferers, by which £4 5s. was sent to the Nottingham Guardian Fund.

THE MOTHERS' UNION quarterly meeting on Jan. 24th, was held at the Temperance Hall, and resulted in a large gathering, for the members of the Mothers' Union and Mrs. Hill's Mothers' Meeting were asked to invite their husbands, and other fathers and mothers as friends. A lantern lecture was given by the Rector on the work and objects of the Mothers' Union, a society which has spread through England and the colonies, with the object of elevating home-life and the training of children. Miss M. Clough gave a charming recitation entitled "Me and Jim," illustrated by lantern slides. Mr. Turner Lee addressed the parents, and especially the fathers present, in a most interesting speech.

THE JALLAND LIBRARY was founded in 1891, by a gift of books by Mr. Jalland.

A meeting of the Committee of the Jalland Library was held on Jan. 13th. The money in the Treasurer's hands has been employed in adding a considerable number of books to the Library during the past year. The committee hope that a larger number of subscribers will avail themselves of the advantage of the Library. The Librarians attend at the School every Monday evening from 6 to 7 p.m. Persons residing in East Bridgford are entitled to membership on payment of a subscription in advance, of 1/- annually, 6d. half-yearly, or 3d. quarterly. The subscription entitles each member to the use of one volume at a time, or additional volumes at a further charge of one penny for each volume. A fine of 1d. per week is incurred for each book kept beyond the allotted time.

The first of our monthly services for men, announced in the January magazine, was held at 3 p.m. on Sunday, Jan. 24th, and it was very pleasant to find a congregation of about 60 assembled. The Rector gave an address on Reading the Bible; how to read it, when to read, and where to read.

The services will be continued on the last Sunday in each month at 3 p.m., and we hope that this statement in the magazine will be sufficient notice, without necessitating a special reminder, of the next men's service on Sunday, Feb. 28th, at 3 p.m.

The East Bridgford Football Club played 13 matches up to the close of 1908, of which they won 4 and lost 7. The Hon. Secretary, Mr. C. S. Hoyles, has kindly supply the following list.

Month	Date	Opposition	Home	Away	Home	Away
September	19th.	Burton Joyce	1		3	
"	26th.	Granby	0		6	
October	10th.	Bingham		2		2
"	17th.	Bradley's		0		7
"	24th.	Gunthorpe		1		5
"	31st.	Granby		0		8
November	14th.	Bradley's	3		4	
"	28th.	Hoveringham	1		0	
December	5th.	Burton Joyce		1		6
"	12th.	Whatton	4		1	
"	19th.	Farndon		2		0
"	25th.	Shelford		5		1
"	26th.	Mr. W. H. Forrest (an 11)		1		1

The Bishop of Southwell will hold a Confirmation at Bingham on Friday, April 2nd, at 3 o'clock. There will probably be a Confirmation here next year, but the Rector will be glad to hear of those who wish to be presented for Confirmation at the present time. Names should be given to him during the first fortnight of February, in order that arrangements may be made for instruction. Adult candidates will be prepared separately if necessary, and not in classes. This is a good occasion for those who have not come forward before from lack of opportunity, to take this important and helpful step in the Christian life.

The School Managers acknowledge with thanks, subscriptions for the school improvements, from Mr. J. Straw 2s. and Mrs. Kemp 1s.

ASH WEDNESDAY, the first day of Lent, falls on Feb. 24th. The Holy Communion will be celebrated at 8 a.m. Morning prayer at 11. Evening Prayer with Sermon at 7.30.

Lent is a time for making and keeping good resolutions. Let me remind you of the four watchwords which some of you have seen upon the memorial cards of the Church Army Mission.

Watch and Pray,
Search the Scriptures,
Do this in Remembrance of ME.
Preach Jesus Christ.

CHURCH RESTORATION FUND.

	£	s.	d.
Amount acknowledged, Sept. 1908 ..	1899	18	11
Mrs Kingdon		2	0
Miss Upton (Southwell)		5	0
Harvest Thank Offerings	4	0	0
Church Box		2	4
Miss S. Chalk		2	0
Christmas Day. Collection in Church ..	6	16	8
Mr. C. Millington (Box)		8	0
Fees (Per Rector)		7	6
Mrs. Wilks		2	0
New Year's Tea	5	10	0

Total received, February, 1909

£1917 14 5

The debt on this Fund is now reduced to £82, which we ought to be able

to clear off before the end of 1909. The small contributions which come in from time to time are gratefully acknowledged, and they should encourage others to do their part in helping to reduce the debt. They may be given to the Rector or placed in the box in the church.

EXTRACTS FROM PARISH REGISTERS.

MARRIAGE.

December 26th. *At Langar*, Charles Edward Jones and Minnie Spencer.

BURIALS.

Jan. 1st. Richard Green, aged 78 years.
 „ 7th. Annie Mary Shortland, aged 2 years.
 „ 11th. Eliza Travis, aged 25 years.
 „ 15th. *At Reading*. John Forrest Euerby, aged 63 years.

Time Table for East Bridgford of Trains to and from Nottingham, for January, 1909:—

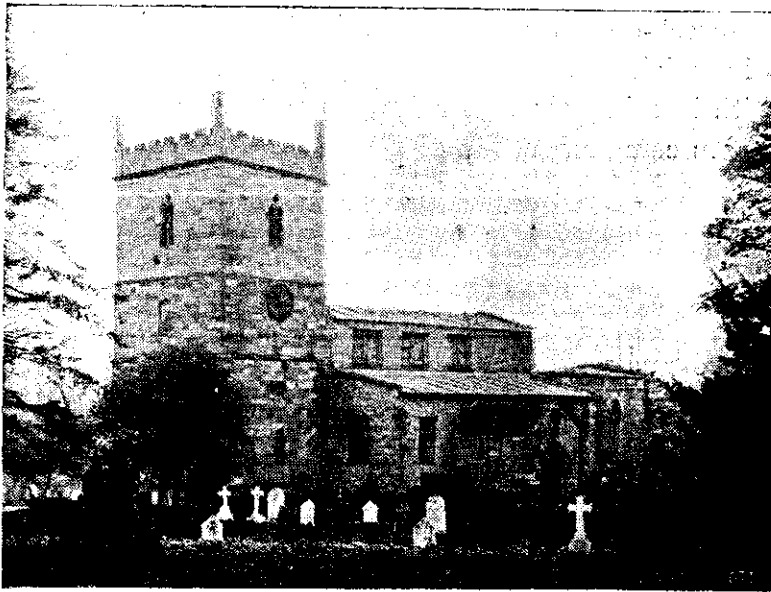
Leave		Arrive Nottingham		Leave Nottingham.		Arrive	
Bingham.	Lowdham.	G.N.R.	M.R.	G.N.R.	M.R.	Bingham.	Lowdham.
—	—	Victoria.	—	Victoria.	—	—	—
—	7.0	—	7.22	5.25	—	5.48	—
7.30	—	7.53	—	—	6.0	—	6.19
—	7.51	—	8.16	7.15	—	7.38	—
8.20	—	8.44	—	—	7.20	—	7.39
—	8.25	—	8.46	*8.10	—	8.34	—
—	9.5	—	9.25	—	8.37	—	8.54
* 9.43	—	10.5	—	9.25	—	9.48	—
9.51	—	10.13	—	*10.24	—	10.47	—
—	10.5	—	10.24	—	11.15	<i>Wednesdays</i>	11.28
10.49	<i>Saturdays</i>	11.9	—	—	11.25	—	11.46
—	11.19	—	11.42	—	—	—	—
11.54	—	12.18	—	11.50	—	12.13	—
—	1.35 <i>except Sat.</i>	—	1.55	—	12.45 <i>except Sat.</i>	—	1.3
*1.40	—	2.5	—	—	1.5	—	1.24
2.1	—	2.24	—	* 1.50	—	2.13	—
—	2.4	—	2.24	—	1.50	—	2. 8
—	2.23	—	2.42	—	2.5	—	2.2
—	3.25 <i>Fridays</i>	—	3.40	2.8	—	2.26	—
*3.32	—	5.56	—	2.43	—	3.6	—
—	4.22	—	4.40	—	3.42	—	4.1
4.54	—	5.18	—	4.5 <i>Saturdays</i>	—	4.27	—
—	4.40	—	5.0	—	4.45	—	5.4
5.2	<i>Saturdays</i>	5.25	—	* 4.50	—	5.13	—
—	6.29	—	6.49	—	6.10	—	6.29
6.44	—	7.8	—	6.15	—	6.38	—
—	7.44	—	8.4	—	6.40	—	6.59
*8.48	—	9.12.	—	—	7.45	—	8.4
9.10	—	9.34	—	7.40	—	8.6	—
—	9.42	<i>Saturday</i>	10.2	8.50	—	9.13	—
—	9.55 <i>except Saturday</i>	—	10.14	—	9.20 <i>except Sat.</i>	—	9.39
—	10.15 <i>Saturday</i>	—	10.35	9.55	—	10.19	—
—	11.12 <i>except Thurs. & Sats.</i>	—	11.30	—	10.38 <i>except Thur. & Sat.</i>	—	10.56
—	—	—	—	—	11.20 <i>Thur. & Sat.</i>	—	11.39
—	—	—	—	11.0 <i>Saturdays</i>	—	11.24	—

SUNDAYS.							
—	12.41	—	1.0	—	10.5	—	10.24
3.10	—	3.33	—	11.40	—	12.4	—
4.55	—	5.18	—	2.10	—	2.33	—
—	6.59	—	7.19	6.13	—	6.36	—
8.35	—	9.0	—	—	8.10	—	8.29
—	—	—	—	9.57	—	10.20	—

*Newark trains.

N.B.—All the G.N.R. trains stop at London Road (High Level Station) as well as at the Victoria Station.

EAST BRIDGFORD MAGAZINE.



St. Peter's Church, East Bridgford.

Services.

HOLY COMMUNION:—

On all SUNDAYS (except 1st in Month) and HOLY DAYS at 8 a.m. and after Morning Prayer on the First Sunday in the Month.

MORNING AND EVENING PRAYER:—

Sundays at 10.45, and 6.30 p.m.

Weekdays at 8 a.m. (Wednesday and Friday at 10), and 6.30 p.m. daily.

HOLY BAPTISM:—

First Sunday in month at 3, or at other Services on due notice.

CHURCHING OF WOMEN:—

Wednesday and Friday at 10, or before any Service on due notice.

SUNDAY SCHOOL:—

At 10 a.m. in the National School.

Children's Service and Catechizing in Church at 2.30.

LENT, 1909.

We have now entered upon the Holy Season of Lent. Holy, because it is intended to be consecrated by the effort of our will towards holiness. The season of Lent begins with Ash Wednesday and ends with Easter Eve, thus comprising 40 week-days, that number being appointed in commemoration of the 40 days in which Our Lord fasted in the Wilderness. The six Sundays which fall with in this period are not fasting days, for all Sundays in the year are feast days in commemoration of Our Lord's Resurrection.

What is meant by Fasting? Do not think of fasting merely in its literal meaning of abstaining from food; though that may be a help to some by keeping before their minds the meaning of the holy season. For fasting means control of the body, and regulation of the habits we so readily fall into. It is fasting in the true sense when you try to give a little more time to your prayers; when you try to be more regular in your church-going, when you make some self-denial in your pleasures in order to do good to others, when you bring yourself to think more seriously of your Crucified Lord. Do not then despise such efforts as these, but listen to the call of your Church to make these efforts during the six weeks of Lent. Your life will be the better for it.

On Tuesdays in Lent there will be service in Church at 7.30 p.m. and a course of sermons will be preached by the Rev. Canon T. B. B. Ferris, Rector of Gonalston.

The Bishop of Southwell will hold a Confirmation at Bingham on Friday, April 2nd, at 3 p.m.

The next Men's Service will be held at 3 p.m. on the last Sunday in this month, March 28th. The subject taken in February was the first two chapters of Genesis, and in March it will be Genesis iii.

On Feb. 1st, Mr. W. A. Hodges gave a reading of Dickens' "A Christmas Carol," in the Temperance Hall. It was very well attended, and the proceeds, £6, were given to the Nurse Fund.

The Girls' Friendly Society held their Social Gathering on Tuesday, Feb. 22nd, in the Temperance Hall, and invited a large number of friends. The principal feature was a very prettily arranged play, based upon real circumstances of Indian life, and representing the evils of some native customs of married life, and the good influence of Women's Missionary work in raising the position of Indian women. A scene in dialogue was also performed by Miss Lisa and Miss Enid Harkness entitled "The Crystal gazer" which gave great amusement. Mrs. W. Richardson contributed two charming songs, and Miss Sharpe, Miss Jesson, Miss E. Manchester and Miss Fox provided music for the dancing.

Sunday, March 7th, is "Diocesan Sunday," when every parish is asked to join in making a contribution to the needs of the work carried on in our own Diocese of Southwell.

The Bishop has organized this duty in each of the two Archdeaconries of Notts and Derby by means of a Church Extension Society of which everyone contributing at least a shilling is a member. The chief purposes for which this Fund is established may be classed under the heads of (1) Providing new Churches, (2) supporting Home Mission work, (3) maintaining Education and Religious Instruction, (4) assisting the Clergy Pensions, and Clergy Widows and Orphans Charity. Last year our contribution to this fund was £3 8s. 5d. If we consider the importance and extent of the work that the Bishop is called upon to do, we ought at least to double that amount.

The Choirmen and Ringers were entertained at the Rectory and spent a very pleasant evening, on Thursday, Feb. 18th.

The Editor of the Magazine desires to thank those who have helped to defray the deficiency on the Magazine account by making an addition to the 1/- which is charged annually for it; and also to thank Mr. R. Jones, who always most kindly brings the parcel of magazines from the Railway Station.

EXTRACT FROM PARISH REGISTER.

BURIAL.

Feb. 10th. Charles Crossland, aged 21 years.

Time Table for East Bridgford of Trains to and from Nottingham, for March, 1909:—

Leave Bingham.		Leave Lowdham.		Arrive Nottingham. G.N.R. M.R.		Leave Nottingham. G.N.R. M.R.		Arrive Bingham.	Arrive Lowdham.
—	7.0	—	7.22	5.25	—	—	5.48	—	—
7.30	—	7.53	—	—	6.0	—	—	6.19	—
—	7.51	—	8.16	7.15	—	—	7.38	—	—
8.20	—	8.44	—	—	7.20	—	—	7.39	—
—	8.25	—	8.46	*8.10	—	—	8.34	—	—
—	9.5	—	9.25	—	8.37	—	—	8.54	—
* 9.43	—	10.5	—	9.25	—	—	9.48	—	—
9.51	—	10.13	—	*10.24	—	—	10.47	—	—
—	10.5	—	10.24	—	11.15	—	—	11.28	—
10.49	<i>Saturdays</i>	11.9	—	—	11.25	—	—	11.46	—
—	11.19	—	11.42	—	—	—	—	—	—
11.54	—	12.18	—	11.50	—	—	12.13	—	—
—	1.35 <i>except Sat.</i>	—	1.55	—	12.45 <i>except Sat.</i>	—	—	1.3	—
—	—	—	—	—	1.5	—	—	1.24	—
*1.40	—	2.5	—	* 1.50	—	—	2.13	—	—
2.1	—	2.24	—	—	1.50	—	—	2.	8
—	2.4	—	2.24	—	2.5	—	—	2.2	—
—	2.23	—	2.42	2.8	—	—	2.26	—	—
—	3.25 <i>Wednesdays</i>	—	3.40	2.43	—	—	3.6	—	—
*3.32	—	3.56	—	—	3.42	—	—	4.1	—
—	4.22	—	4.40	4.5 <i>Saturdays</i>	—	—	4.27	—	—
4.54	—	5.18	—	—	4.45	—	—	5.4	—
—	4.40	—	5.0	* 4.50	—	—	5.13	—	—
5.2	<i>Saturdays</i>	5.25	—	—	6.10	—	—	6.29	—
—	6.29	—	6.49	6.15	—	—	6.38	—	—
6.44	—	7.8	—	—	6.40	—	—	6.59	—
—	7.44	—	8.4	—	7.45	—	—	8.4	—
*8.48	—	9.12.	—	7.40	—	—	8.6	—	—
9.10	—	9.34	—	8.50	—	—	9.13	—	—
—	9.42	<i>Saturday</i>	10.2	—	9.20 <i>except Sat.</i>	—	—	9.39	—
—	9.55 <i>except Saturday</i>	—	10.14	9.55	—	—	10.19	—	—
—	10.15 <i>Saturday</i>	—	10.35	—	10.38 <i>except Thur. & Sat.</i>	—	—	10.56	—
—	—	—	—	—	11.20 <i>Thur. & Sat.</i>	—	—	11.39	—
—	11.12 <i>except Thurs. & Sats.</i>	—	11.30	11.0 <i>Saturdays</i>	—	—	11.24	—	—
SUNDAYS.									
—	12.41	—	1.0	—	10.5	—	—	10.24	—
3.10	—	3.33	—	11.40	—	—	12.4	—	—
4.55	—	5.18	—	2.10	—	—	2.33	—	—
—	6.59	—	7.19	6.13	—	—	6.36	—	—
8.35	—	9.0	—	—	8.10	—	—	8.29	—
—	—	—	—	9.57	—	—	10.20	—	—

*Newark trains.

N.B.—All the G.N.R. trains stop at London Road (High Level Station) as well as at the Victoria Station.

EAST BRIDGFORD MAGAZINE.



St. Peter's Church, East Bridgford.

Services.

HOLY COMMUNION:—

On all SUNDAYS (except 1st in Month) and HOLY DAYS at 8 a.m. and after Morning Prayer on the First Sunday in the Month.

MORNING AND EVENING PRAYER:—

Sundays at 10.45, and 6.30 p.m.

Weekdays at 8 a.m. (Wednesday and Friday at 10), and 6.30 p.m. daily.

HOLY BAPTISM:—

First Sunday in month at 3, or at other Services on due notice.

CHURCHING OF WOMEN:—

Wednesday and Friday at 10, or before any Service on due notice.

SUNDAY SCHOOL:—

At 10 a.m. in the National School.

Children's Service and Catechizing in Church at 2.30.

HOLY WEEK AND EASTER.—During Holy Week the Services will be as follows: On Palm Sunday, April 4th, the Celebration of the Holy Communion will be at Mid-day, and the Litany will be said at 8 a.m. The solemn reading of the Chapters containing the story of The Passion, from S. Matthew's Gospel, will thus take place at the Mid-day Service. It is the intention of the Church that the reading of the Passion of our Lord Jesus Christ should be a part of our religious effort in Holy week and preparation for Good Friday.

Morning Prayer will be said at 11 o'clock each day, and the Holy Communion will be celebrated on Maundy Thursday at 8 o'clock. The evening service will be at 6.30 each day, with the exception of Tuesday, when our service will be continued as in the previous weeks of Lent, at 7.30.

On **GOOD FRIDAY** the Litany will be said at 8 a.m. Morning Prayer at 11. Addresses and hymns from 2 to 3. Evening Prayer at 7.30.

On **EASTER DAY** the greatest Festival of the Christian year, when we are chiefly bound to praise God for the glorious Resurrection of His Son Jesus Christ our Lord, there will be celebrations of the Holy Communion at 7, 8 and at Midday.

Will those who are willing to help in decking the Church for Easter, come on Saturday, Easter Eve at 10 o'clock in the morning. Gifts of flowers are asked for and should be brought to the Rectory on Good Friday or the first thing on Saturday morning.

The Easter Vestry Meeting will be held on Tuesday in Easter week at 7.30 p.m. in the Schoolroom for the election of Churchwardens, the appointment of Sidesmen to assist the Churchwardens, and the presentation of the Churchwardens' accounts.

While every ratepayer has a right to be present and to vote for the election of Churchwarden, it is especially the duty of our Churchpeople to make a point of attending this annual meeting and to show an interest of the affairs of the church.

The Easter offerings, at all the services on Easter Day, will be given to the Church Restoration Fund. The amount of the debt still owing is now reduced to £77.

Contributions, large or small, may be made through the Church collection, or placed in the box in Church, or sent direct to the Rector, who will duly acknowledge them.

The School Managers propose to begin at once the improvement of the School playground, which has been delayed in the hope of getting more assistance. They acknowledge with thanks a donation of £5 from Mr. W. A. Hodges. The work that can be done is very necessary, and they must trust to the kindness of those who wish to see the children well cared for to help them to defray the cost. They require another £20 to carry out the work thoroughly.

Mr. W. A. Hodges has been co-opted as School manager in place of Mr. F. Hine, who has left the Village.

The School holidays begin on April 8th and the School will re-open again on Monday, April 19th.

The Confirmation will be held by the Lord Bishop of the Diocese at Bingham on Friday, April 2nd, at 3 p.m.

It is a very good rule of the Church that everyone who comes for Confirmation should have a Godfather or Godmother as a witness of their Confirmation. Surely parents or god-parents, who have brought a child to Holy Baptism, should feel the importance of being present as a witness at the child's confirmation, and should show by their presence and their prayers, their interest in the child's Christian welfare, whom they have either themselves or by the help of others, caused to be instructed in the Christian faith.

We are very grateful to the Rev. Canon Ferris, Rector of Gonalston, for having come on five Tuesdays in Lent to preach a course of sermons at the evening services.

CHURCH RESTORATION FUND.—A Sale and Entertainment will be held in the Temperance Hall, on Thursday, April 15th, from 3.30 to 10 p.m. There will be Stalls for the Sale of Work, etc., and also (in the evening) for second-hand articles; and tea and refreshments will be provided from 4 p.m. A musical play will be performed at 4.30 and at 7.30. Admission 1/-; after 5.30 p.m., 3d.

EXTRACTS FROM PARISH REGISTERS.
BURIALS.

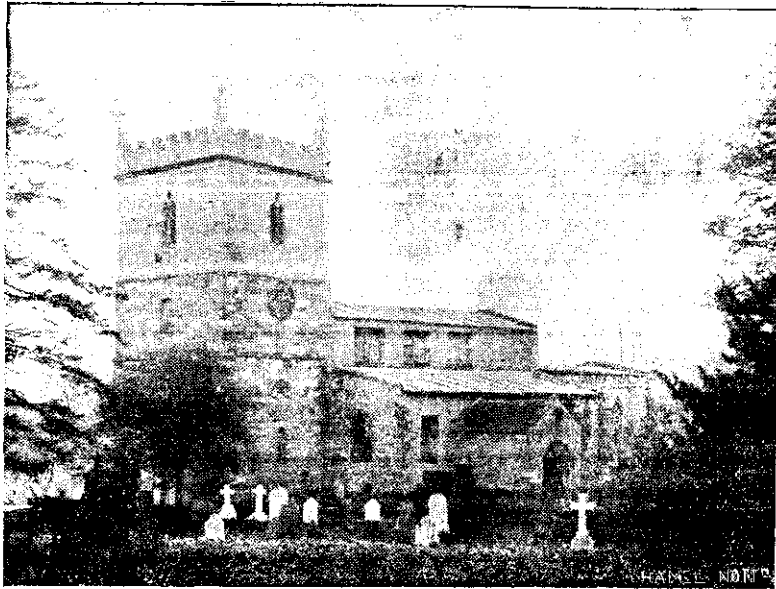
March 17th. Ellen Smith, aged 85 years.
" " William Millington (of Beeston), aged 56 years.
" 20th. (At *Shelford*), Sarah Ann Lowe, aged 74 years.

APRIL 1909.

- 2 F. Confirmation at Bingham, 3 p.m.
4 S. *6th Sunday in Lent.* Litany 8. Holy Communion Mid-day.
5 M. *Monday in Holy Week.* Services 11 and 6.30.
6 T. *Tuesday in Holy Week.* Services 11 and 7.30.
7 W. *Wednesday in Holy Week.* Services 11 and 6.30.
8 Th. *Maundy Thursday.* Services 11 and 6.30.
9 F. GOOD FRIDAY. Services 8, 11, 2 and 7.30.
10 S. *Easter Eve.* Service 6.30.
11 S. EASTER DAY. Holy Communion 7, 8 and 10.45.
12 M. *Monday in Easter Week.* Bank Holiday.
13 T. *Tuesday in Easter Week.* Vestry Meeting 7.30.
18 S. *1st Sunday after Easter.* Holy Communion at 8.
25 S. *2nd Sunday after Easter.* St. Mark, E. & M. Holy Communion at 3. Men's Service 3.



EAST BRIDGFORD MAGAZINE.



St. Peter's Church, East Bridgford.

SerVICES.

HOLY COMMUNION:—

On all SUNDAYS (except 1st in Month) and HOLY DAYS at 8 a.m. and after Morning Prayer on the First Sunday in the Month.

MORNING AND EVENING PRAYER:—

Sundays at 10.45, and 6.30 p.m.

Weekdays at 8 a.m. (Wednesday and Friday at 10), and 6.30 p.m. daily.

HOLY BAPTISM:—

First Sunday in month at 3, or at other Services on due notice.

CHURCHING OF WOMEN:—

Wednesday and Friday at 10, or before any Service on due notice.

SUNDAY SCHOOL:—

At 10 a.m. in the National School.

Children's Service and Catechizing in Church at 2.30.

The Lord Bishop of Southwell held a confirmation at Bingham at 3 o'clock on Friday, April 2nd. The service was well arranged in the fine Parish Church, and 66 candidates were presented, of whom eight were from East Bridgford.

Easter Day opened brightly, in weather befitting the Royal Festival of the Resurrection. The number of those who made their Easter Communion here was 130. The Choir sang Dr. Monk's anthem, "The Lord is my strength," and the Church was decorated with spring flowers, primroses and daffodils, as bright emblems of the Resurrection. The Collections during the day for the Church Restoration Fund amounted to £10 6s. 6d.

The Good Friday Collection for the East London Mission to Jews was £1 7s. 8d.

ON ASCENSION DAY, May 20th the Holy Communion will be celebrated at 8 a.m. Morning Prayer at 11. Evening Prayer with Sermon at 7.30 p.m.

ON WHIT-SUNDAY, May 30th, the Holy Communion will be celebrated at 7 and 8 a.m. and at mid-day.

The Monthly Men's Service will be held on Whit-Sunday at 3 p.m.

On Whit-Monday, May 31st. the Annual Friendly Society's festival will take place. Service in Church at 11.45 a.m.

The Celebration of Holy Communion on Trinity Sunday, June 6th, will be at 8 a.m.

The Annual Parish Meeting was held on Wednesday, March 31st, and was attended by a considerable number in anticipation of a discussion on the question of a water supply for East Bridgford.

Here let us say in passing, what a good thing it is to have a subject at the Parish Meeting which arouses some interest. The Parish Meeting, which is intended to give every ratepayer an opportunity of hearing and learning about local self-government, and what our Parish Council is doing, is as a rule entirely disregarded, except when there is the useless excitement of an election, and no other matters can be brought forward.

Mr. W. A. Hodges was elected chairman, and the charity accounts were presented and passed. The Rector then brought forward his resolution that the Parish Council should take the first steps with regard to the question of water supply. These are of course, first to obtain expert advice as to how it could be provided, and then to obtain an estimate of the cost. The present supply is inadequate, and much of it is unwholesome, and unfit for the purposes for which it is needed.

He described a scheme for obtaining the same excellent water as that which supplies Nottingham, and roughly indicated the cost of it by comparison with other similar works that have been carried out. Mr. Chandley, who is well qualified with technical knowledge, supported the proposal as a feasible scheme.

The majority of those present, however, preferred the amendment moved by Mr. Turner and supported by Mr. Sharp, to the effect that the water supply of East Bridgford is excellent, and that the cost of providing water would be enormous, and would involve an expensive sewage scheme as well.

Now we may add these observations on the decision of the meeting. The sewage difficulty is quite an imaginary objection, for if our Sewage arrangements are defective, they are so now, and a supply of water fit to drink will make them neither better nor worse, nor will it necessitate any different treatment. With regard to the estimate of cost worked out by the Rector, even supposing that no extra water rate was paid by large users, as

of course should be, it would be well covered by a 9d. rate on buildings and a 3d. rate on land; so that the cost to a man whose house was rated at £5, would be 3/9 a year, or less than 1d. a week, and to the farmer rated at £300 for his land, 75/- a year, or much less than it must really cost him to lead almost daily from the Trent. This is no enormous cost, and for many of us, especially small householders, would be even less than is paid for inferior water now. Of course this estimate, though carefully made, is a rough one, and may be wrong; but the real question is, Why should not someone be authorised to find out, from professional advice, exactly how such a scheme might be economically carried out? Instead of being content with very vague assurances of the excellency and sufficiency of our water supply, we should then have definite facts before us, and might even come to see that our market gardens, our cattle-troughs, our washing tubs, our tea-kettles, our houses, and our health, would be much better off, for a little judicious outlay.

A SALE OF WORK and Entertainment was opened in the Temperance Hall, on Thursday, April 15th at 3.30 p.m. on behalf of the Church Restoration Fund. Stalls for plain and fancy work were provided by members of the Work-party and were served by Mrs. Turner, Mrs. Weatherell, Mrs. Taylor, Mrs. Case, Mrs. Fletcher, Miss Barker, Miss E. Barker, Miss M. Atkinson, Miss Robinson, and Miss M. Robinson. The Refreshment Stall, well stocked by the contributions of friends, was managed by Miss Millington, assisted by Miss O. Swanwick, Miss Metheringham, Miss Seward, and Miss Ulyett. Mrs. Mussell and Mrs. Swingler superintended a second-hand stall, and Miss Weatherell a Fish-Pond. We are much indebted to friends from Scarrington for kind and neighbourly assistance. The Rev. J. Standish conducted a string band in which the performers were Mrs. Standish, Mrs. Cheetham, Miss E. Stafford and Miss Hill, together with Mrs. Cartwright and Mrs. Treplin. The Misses Standish and Miss Renshaw gave an entertaining play, entitled "The little nut tree," in which they were assisted by the Misses Joyce and Honour Chandley, Phyllis Bradford, E. Euerby, G. Raynor, and G. Poole. Some very pretty dancing was performed upon the stage, which was most successfully arranged by Mr. A. Reeves. Great assistance was also given by Mr. Sharman, Mr. J. Upton, Mr. Swanwick, Mr. Jones and others. The net proceeds for the Church Restoration Fund amounted to £28 1s.

The Easter Vestry Meeting was held as usual at 7.30 p.m. on Tuesday in Easter Week. After the minutes of the last meeting had been read, the Churchwardens' accounts which had been audited by Mr. G. Cartwright, were passed. A balance of £9 6s. 9½d. was shown by the accounts to be in the Churchwardens' hands. The Rector expressed his thanks to the outgoing Churchwardens for their diligent and constant attention to the duties of their office, which had sometimes been difficult, but had been filled with firmness and courtesy, and the thanks of all were due to them. It should be remembered that there was no difference in the office of the two churchwardens, they do not act separately and must concur. The churchwardens, Mr. J. Turner and Mr. R. Swanwick were then re-appointed, and the following were chosen to assist as Sidesmen, Messrs. T. Lee, Gower, J. Woodsend, Allwood, Coville, and C. Millington, the first three to be ex-officio members of the Church Council.

The three years' term of the Church Council ends this year, and it was agreed to hold a meeting on Thursday in Whitsun-week for the election of the five representative members, who shall be communicants of the Church of England.

The suggestion that a subscription be made to provide a new flag for the Church was approved of.

A summary of the Churchwardens' accounts and other collections in Church during the past year is given below.

SUMMARY OF CHURCH ACCOUNTS, EASTER, 1909.			
Receipts.	£ s. d.	Expenditure.	£ s. d.
Collections in Church :—		Balance Repaid ..	1 5 7
For Church Expenses..	69 7 10½	Repairs to fabric ..	4 18 8
Sick and Poor (1st Sun. in Month)	9 8 0	Churchyard ..	2 0 0
Saints' Days ..	1 16 3	Insurance and Fees ..	1 7 0
Special objects, viz.—		Organ and Choir ..	21 19 3
Foreign Missions ..	5 15 0	Clerk's Salary ..	15 0 0
Pan-Anglican Thank		Bellringers ..	4 5 0
Offering ..	15 7 10	Fuel, Light, Cleaning ..	8 5 10
Home Missions (Jews) ..	1 7 8	Sundries ..	2 4 0
Diocesan Sunday ..	6 2 1	Alms distributed ..	10 0 0
Sunday School ..	6 11 7	Special Objects ..	73 18 2
Church Army ..	1 19 6	Balance in Churchwardens' hands	9 6 9½
Hospitals ..	7 16 2		
Italian Earthquake ..	4 1 2		
Church Bg. Association ..	10 3		
Church Restoration ..	24 6 9		
	<u>73 18 3</u>		
	£ 154 10 3½		£ 154 10 3½

EXTRACTS FROM PARISH REGISTERS.

BAPTISM.

Easter Day, April 11th. Charles Everard, son of Martin William and Maria Shortland

MARRIAGES.

April 13th. Alfred Knight and Emily Lavinia Guy.
 „ 14th. James Dunthorne and Ada Emma Daft.

BURIALS.

April 22nd. William Palmer, aged 74 years.
 „ „ Grace Smith, aged 13 years.
 „ 24th. Martin William Shortland, aged 32 years.

MAY, 1909.

- 1 S. *S.S. Philip and James.* App. & M.
- 2 S. *3rd Sunday after Easter.* Holy Communion at Mid-day.
- 9 S. *4th Sunday after Easter.* Holy Communion at 8.
- 16 S. *5th Sunday after Easter.* Holy Communion at 8.
- 17 M. *Rogation Day.*
- 18 T. *Rogation Day.*
- 19 W. *Rogation Day.*
- 20 Th. ASCENSION DAY. Holy Communion 8. Services 11 and 7.30
- 30 S. WHIT-SUNDAY. Holy Communion at 7, 8 and mid-day. Men's Service 3.
- 31 M. *Monday in Whitsun Week.* Friendly Society's Service 11.45.

EAST BRIDGFORD MAGAZINE.



St. Peter's Church, East Bridgford.

SerVICES.

HOLY COMMUNION:—

On all SUNDAYS (except 1st in Month) and HOLY DAYS at 8 a.m. and after Morning Prayer on the First Sunday in the Month.

MORNING AND EVENING PRAYER:—

Sundays at 10.45, and 6.30 p.m.

Weekdays at 8 a.m. (Wednesday and Friday at 10), and 6.30 p.m. daily.

HOLY BAPTISM:—

First Sunday in month at 3, or at other Services on due notice.

CHURCHING OF WOMEN:—

Wednesday and Friday at 10, or before any Service on due notice.

SUNDAY SCHOOL:—

At 10 a.m. in the National School.

Children's Service and Catechizing in Church at 2.30.

We give notice of two occasions of interest throughout the Diocese of Southwell. Though one is at a distance, and the other falls in our own Feast week, whatever belongs to the work of the Diocese as a whole should be thoughtfully considered, as helping to remind us that the Diocese, and not merely the parish, is the constituted area for Church organization.

The Diocesan Missionary Festival will be held at Derby, under the presidency of the Bishop of Southwell, on Wednesday, June 16th. After Communion at 8 in S. Werberg's Church, a conference will be held in the Temperance Hall at 11, and a service at All Saints Church at 3.30, when the preacher will be the Right Rev. Bishop Gaul, D.D., formerly Bishop of Mashonaland.

The Cathedral Church is the symbol of unity for the whole Diocese, and we should therefore rejoice on the 800th anniversary of the founding of Southwell Minister, now the cathedral church of our Diocese. We do not know the exact date of the laying the foundation stone, or of the consecration of the present nave, transepts, and tower. But we gather from a letter preserved in the "White book" in the library of Southwell Minister, that it was Thomas II, Archbishop of York 1109-1114, who initiated the building of the Church, though he could not have lived to see its completion, for it must have taken at least 30 years to build. Sunday, June 27th, is the 800th anniversary of the consecration of Thomas II to the See of York, and it is to be kept at Southwell as the 800th anniversary of the Minister. In order that the people of the diocese may take a part, the principal service of thanksgiving and commemoration will be held on S. Peter's Day, Tuesday, June 29th, at 3.15, when the present Archbishop of York will be the preacher. The other services on that day are at 8 (Holy Communion) 10.15 and 1 p.m., when the Archdeacon of Nottingham will deliver an Oration on the life of Thomas II, Archbishop of York.

Special railway fares are arranged by the Midland Railway; and it is hoped that many of the clergy and laity of the Diocese will endeavour to be present on that day to thank God for inspiring His servants to build such a church to His glory.

The Church Council, at a Meeting on May 18th, passed a resolution of thanks to all those who helped in the sale and entertainment on April 15th, for the Church Restoration Fund.

The Church Council decided that two official seats should be set apart in Church for Churchwardens or Sidesmen.

Mr. W. A. Hodges was co-opted as a member of the Church Council, in place of Mr. F. Hine, who has left the village.

The announcement in last month's Magazine that an election would be held of the Church Council, was made in error, as the present elected members were appointed for three years in 1908.

The Collections for the Diocesan Missionary Studentship, on Ascension Day, amounted to 17s. 9½d.

A new flag, a St. George's Cross, has been provided for the Church Tower, by subscription, at a cost of about £1 17s. 6d.

The Choral Society's Concert on April 26th, was quite a success. H. Smart's Dramatic Cantata, "Bride of Dunkerron," formed the first part of the concert, and though by no means easy music, was performed with great credit both to the Conductor and to the chorus, as were also the three part songs in the second part of the programme. Miss Exton, the soprano, charmed the audience with her pure tones and exquisite singing, and in the second part gave two songs "Hey, ho! the Daffodils," and "In sweet September," with "Coming through the Rye" as an encore. Mr. W. Cartledge White, took the tenor part in the cantata, and in the second part sang "I hear you calling me," and "I seek for thee in every flower." Mr. Turner Lee, baritone, was in excellent voice and gave a spirited interpretation of his part of the Sea King. Mrs. Wilkinson, A.L.C.M., (piano), and Mr. C. Doncaster, L.V.C.M. (organ) were, as usual, perfect accompanists.

There was a good audience and the Society is to be congratulated on the result of its efforts. At the close of the evening a presentation was made to the Rev. J. Standish by the members of the Choral Society, consisting of Bond's "Gothic Architecture," in recognition of the services he has so freely and ably rendered as Conductor.

CRICKET CLUB.—The list of matches for 1909, and the balance sheet for the past year have been published. The Receipts were by subscription £11 11s. 6d.; by Whist drive Oct. 19th, £3 1s. 6½; Expenses £12 17s. 4½d. leaving a balance in hand of £1 15s. 8d.

The following matches have been played.

May 8th.	East Bridgford	55.	Bingham	113.
" 15	" "	61.	Caythorpe	56.
" 22nd.	" "	28.	Shelford	43.

During June the matches arranged are as follows:—

5th, Lowdham P.S.E. (2 elevens); 10th, Notts. Unity; 14th, Eastman's Ltd; 19th, Mr G. Cartwright's Eleven; 28th and 29th, (Feast week) Nelson's Ltd, and Orston; 31st, Ladies and Gentlemen.

East Bridgford Feast Sunday is on June 27th. On this day our thanks are due to Almighty God for another year of blessings, and we commemorate the dedication of our Church. Through many alterations and re-building, still parts of the Church have stood for over 700 years, and we have certain evidence of a church on the same site for perhaps 300 years before that period. We who worship may well say,

So long Thy power hath blest me, sure it still
Will lead me on.

The 46th Annual Show of the East Bridgford Horticultural Society will be held on Tuesday, June 29th.

GIRLS' FRIENDLY SOCIETY.—Attention is called to the Registry Office, at the Girl's Friendly Society's Lodge, 6, Regent St. Nottingham, for all classes of reliable servants. Office hours, 11 to 1, and 6 to 8 p.m., also Wednesday and Saturday afternoons. Usual fees.

A Whist Drive was held at the Temperance Hall on April 13th, by which the sum of two guineas was obtained for the Nurse Fund.

We regret to lose Mr. William Daft from amongst us. He leaves East Bridgford after 49 years' residence, with the respect and good will of all. He was Parish Clerk until 1904, having held the office for twelve years, and has latterly been a Sidesman of the Church.

EXTRACTS FROM PARISH REGISTERS.

BAPTISMS.

April 25th Ruby, daughter of John Thorpe and Sarah Elizabeth Green.
 May 16th Luke, son of Robert and Mary Ann Barlow.

JUNE, 1909.

- | | | | |
|----|-----|------------------------------|--|
| 1 | Tu. | Tuesday in Whitsun Week. | Band of Hope Festival and Concert. |
| 2 | W. | Ember Day. | |
| 4 | F. | Ember Day. | |
| 5 | S. | Ember Day. | |
| 6 | S. | Trinity Sunday. | Holy Communion at 8. |
| 11 | F. | S. Barnabas, A. & M. | Holy Communion at 8. |
| 13 | S. | 1st Sunday after Trinity. | Holy Communion at 8. |
| 20 | S. | 2nd Sunday after Trinity. | Holy Communion at 8. |
| 24 | Th. | Nativity of S. John Baptist. | Holy Communion at 8. |
| 27 | S. | 3rd Sunday after Trinity. | Feast Sunday. Holy Communion at 8. Men's Service at 3. |
| 29 | Tu. | S. Peter, A. & M. | Holy Communion 8. Flower Show. |

"PALESTINE IN NOTTINGHAM."

Victoria Hall, July 7th to 21st, 1909, 12 to 10 daily, (except Sundays.)
 The following will be the chief attractions—

MODELS.—Ancient Jerusalem, Herod's Temple, Tabernacle, Mount Zion, Church of Holy Sepulchre, Passover Table, Rock Hewn Tomb.

DWELLINGS.—Rich Man's House, Carpenter's Home, Bethany Cottage, Bedouin Tent.

INDUSTRIES.—Potter and his Wheel, Weaver, Baker, Confectioner, and Atter Shop.

There will also be Musical Instruments, Agricultural Instruments, Botanical Specimens, Stalls for the Sale of Oriental Goods, Native Sweets, etc.

Season Tickets, 2/6; 12 to 5.30 p.m. 1/-; 5.30 to 10 p.m. 6d.; Children half-price. Reduction for Bible Classes, Schools, etc., applying to Rev. W. Round, New Radford Vicarage, or to Mr. W. Williams, 19 Tennyson Street.

F. R. PIPER, St. Andrews Vicarage.

C. D. GORDON, 58, Burford Road.

Hon. Gen. Secs.

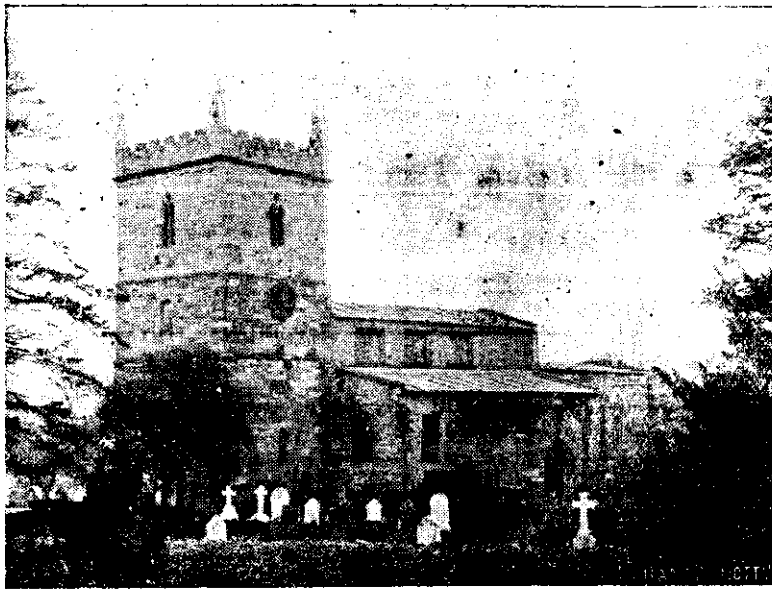
CHURCH RESTORATION FUND.

Amount acknowledged, Feb., 1909	1917	14	5
A Friend		2	6
Miss Ulyett		5	0
Mrs. Tomlinson..	5	0	0
Miss Fox	5	0	0
Church Box (Nov.—March)		3	0
A Friend		2	6
Easter Offerings	10	6	6
Church Box (April)		2	11
Sale and Entertainment April 15th	28	1	0
A Thank-offering		15	0

Total received June 1909 £1967 12 10

The debt on this fund is now reduced to £32. The offerings on Feast Sunday will be for this object.

EAST BRIDGFORD MAGAZINE.



St. Peter's Church, East Bridgford.

Services.

HOLY COMMUNION :—

On all SUNDAYS (except 1st in Month) and HOLY DAYS at 8 a.m. and after Morning Prayer on the First Sunday in the Month.

MORNING AND EVENING PRAYER :—

Sundays at 10.45, and 6.30 p.m.

Weekdays at 8 a.m. (Wednesday and Friday at 10), and 6.30 p.m. daily.

HOLY BAPTISM :—

First Sunday in month at 3, or at other Services on due notice.

CHURCHING OF WOMEN :—

Wednesday and Friday at 10, or before any Service on due notice.

SUNDAY SCHOOL :—

At 10 a.m. in the National School.

Children's Service and Catechizing in Church at 2.30.

On Feast Sunday, June 27th, the Rector in his sermon in the evening gave an account of the impressions and the lessons to be derived from the splendid English Church Pageant, which took place in London during June. Its historical scenes showed the close connection between the Church and the life of the people in this land through seventeen centuries. "We cannot separate ourselves from our past; we carry with us to the present day all that we have gone through," said the late Bishop of London. Our own Feast time is really the descendent of olden times when religion and holiday time were closely intertwined. If we keep our Feast Sunday well, as our first and foremost act of thanksgiving, we shall preserve something of the old spirit of devotion, and bring more of the love and service of God into our daily life.

THE MEN'S SERVICE, which has been held on the last Sunday in each month since the beginning of the year, will be discontinued for a month or two during the summer, and due notice will be given of the date of re-commencement. The attendance at the services seems to show that they have been appreciated. We are much indebted to the Rev. Jos. Barker, D.D., for his address on Feast Sunday.

THE BAND OF HOPE, headed by the Bingham Brass Band, made their annual parade of the village on Whit Tuesday, June 1st, and met at the Temperance Hall afterwards for tea. In the evening a successful concert was given, with part songs, action songs, and humorous songs.

The collections for the Church Restoration Fund on Whit Sunday amounted to £5 3s., and on Feast Sunday, June 27th, to £4 12s. 8½d.

On Sunday, July 25th, our alms are asked for the Home Missions of the Additional Curates Society, whose work in helping to provide clergy in populous places is already well known to us.

CRICKET CLUB.—The following are the results of matches that have been played during the past month:—

May 29th	East Bridgford 118,	Gunthorpe 48 for 3 wickets.
" 31st	" 118,	Flintham 83.
June 5th	" 37,	Lowdham 64.
" 10th	" 53,	Notts Unity 90.
" 19th	" 108,	Mr. G. Cartwright's XI. 122.
" 22nd	" 57,	Bingham Evening Star 30.
" 28th	" 36,	Nelson's Ltd. 54.
" 29th	" 62,	Orston 125 for 5 wickets.

FOOTBALL CLUB.—The members desire to express their thanks to all who have taken an interest in and helped the Club. The results of the past season's matches are as follows:

			For	Against
Jan. 2	Farndon	Away	0	7
" 9	Netherfield Baptists	Home	7	0
" 16	Wakes and Lamb	Home	0	3
" 23	Hoveringham	Away	0	2
" 30	Bingham	Home	9	1
Feb. 6	Lowdham	Home	2	3
" 13	Wakes and Lamb	Away	2	3
" 20	Whatton	Away	0	2
" 27	Bradleys	Home	1	3
Mar. 6	Lowdham	Away	1	0
April 3	Farndon	Away	1	2
" 17	Bradleys	Away	0	0

The forty-sixth annual show of the East Bridgford Horticultural Society was held on Tuesday in Feast Week. Notwithstanding the backward season, the display of flowers and vegetables was an excellent one. The day was fine and the attendance of visitors was good. The Radcliffe Brass Band performed a good selection of music during the afternoon, and for the dancing in the evening. The judges were Mr. Sears, gardener at Whatton Manor, and Mr. A. Parr, gardener to Earl Manvers, at Holmepierrepont.

The following is a list of the prize winners:—

CLASS A. —(Gentlemen, Professional Gardeners, and Farmers).	Lettuces—1, Swingler; 2, Fletcher.
Roses—1, Dr. Duff; 2, Miss Fox.	Peas—1, Swingler; 2, Lodder.
Geranium, for bloom—1 and 2, Rev. A. D. Hill.	Potatoes, round—1, Millington; 2, Hoyles.
Geranium, for foliage—1 and 2, Rev. A. D. Hill.	Ditto, kidney—1 & 2, Millington.
Pelargonium—1 and 2, Rev. A. D. Hill.	Turnips—1, Green; 2, Millington.
Fuchsia—1 and 2, Miss Fox.	Apples, last year's—1, Swingler; 2, J. Alvey.
Calceolaria, Herbaceous—1 and 2, Rev. A. D. Hill;	Ditto, this year's—1 and 2, Alvey.
ditto, shrubby: 1 and 2, Miss Fox.	Gooseberries—1 and 2, Higgs.
Petunia—1 and 2, Rev. A. D. Hill.	Currants, white—1 and 2, Alvey.
Plants (Greenhouse)—1, Rev. A. D. Hill; 2, Miss Fox.	Ditto, red—1, Fletcher; 2, Alvey.
Sweet Williams—1, Dr. Duff.	Ditto, black—1 and 2, A. Shipman.
Bouquet of Garden Flowers—1 and 2, Miss Fox.	Raspberries—1 and 2, E. Coville.
Pansies—1, Rev. A. D. Hill; 2, Miss Fox.	Strawberries—1 and 2, Swingler.
Sweet Peas—1, Rev. A. D. Hill; 2, Miss Fox.	Cherries—1, Swingler; 2, Hoyles.
Carrots—1 and 2, Rev. A. D. Hill.	Best Tray of Vegetables—1 and 2, Millington.
Cauliflowers—1 and 2, Rev. A. D. Hill.	
Cucumbers—1 and 2, Rev. A. D. Hill.	CLASS C. —(Labourers).
Broad Beans—1 and 2, Rev. A. D. Hill.	Roses—1, R. Smith; 2, F. O. Green.
Onions, Spring sown—1 and 2, Rev. A. D. Hill;	Geranium—for Bloom, 1 and 2, F. O. Green; for
autumn sown: 1, Mr. W. A. Hodges; 2, Rev. A. D. Hill.	Foliage, 1, Green; 2, Smith.
Lettuces—1 and 2, Rev. A. D. Hill.	Pelargonium 1 and 2, Green.
Peas—1 and 2, Rev. A. D. Hill.	Fuchsia—1, Smith; 2, Green.
Potatoes, round—1, Rev. A. D. Hill; 2, Mr. S. Richardson.	Calceolaria—1 and 2, Green.
Kidney—1, Rev. A. D. Hill; 2, Mr. Hodges.	Pot of Musk—1 and 2, Green.
Turnips—1, Rev. A. D. Hill; 2, Miss Fox.	Petunia—Green.
Apples, last year's—1 and 2, Rev. A. D. Hill; this year's—1 and 2, Rev. A. D. Hill.	Window Plants—1 and 2, Green.
Gooseberries—1 and 2, Mr. J. W. Woodsend.	Sweet Williams—1, Green; 2, Smith.
Currants, white—1 and 2, Mr. J. W. Woodsend; red—1 and 2, Mr. Richardson; black—1 and 2, Rev. A. D. Hill.	Collection of Cut Flowers—1 and 2, Green.
Raspberries—1 and 2, Rev. A. D. Hill.	Pansies—1, Smith; 2, Green.
Strawberries—1, Dr. Duff; 2, Mr. S. Richardson.	Sweet Peas—Green.
Cherries—1 and 2, Mr. Woodsend. Special, Rev. A. D. Hill.	Carrots—1 and 2, Smith.
Best Tray of Vegetables—1, Miss Fox; 2, Rev. A. D. Hill.	Cauliflower—1 and 2, Green.
The respective gardeners were—Dr. Duff, W. Willis-croft; Rev. A. D. Hill, J. Mussell; Miss Fox, D. Gower; Mr. W. A. Hodges, J. Upton; Mr. J. W. Woodsend, J. Raynor.	Cabbages—1 and 2, Green.
	Rhubarb—Smith.
	Broad Beans—1 and 2, Green.
	Onions—Spring sown, 1, Green; 2, Smith; Autumn sown, 1 and 2, Smith.
	Lettuces—1 and 2, Green.
	Eschalots—1 and 2, Smith.
	Peas—1 and 2, Green.
	Potatoes—Round, 1 and 2, Smith; Kidney, 1, Smith; 2, Green.
	Turnips—1, Watson; 2, J. Stanley.
	Apples—last year's, 1, Green; 2, Smith; this year's, 1, Green; 2, Smith.
	Gooseberries—1 and 2, Green.
	Raspberries—1, Green; 2, Smith.
	Strawberries—1, Smith; 2, Green.
	Currants—White, 1 and 2, Smith; Red, 1 and 2, Smith; Black, 40, picked, 1, J. Stanley; 2, Smith.
	Cherries, 20—1 and 2, Stanley.
	Bouquet of Wild Flowers, Children's Prizes—1, Edna Clegg; 2, R. Gower; 3, A. Crossland.
	Best tray of Vegetables—F. O. Green.
	SPECIAL PRIZES.
	Doncaster & Son, Bingham—1, Rev. A. D. Hill; 2, Mr. W. C. Millington.
	Mr. Wadsworth, Newton—Mr. W. C. Millington.
	Eggs—1, Mr. J. Green; 2nd, Mr. R. Swanwick.
	Butter—1 and 2, Miss Millington.
	Table Decorations—1, Miss Rhodes; 2, Mrs. Fletcher.
	Garden Designs—1, Mr. D. Gower; 2, Mrs. Raynor.
	Allotment Prize—Mr. F. Waterfield.
	Premier Prize for Kidney Potatoes—Mr. W. Millington
	" " Round " Rev. A. D. Hill.

We wish to remind our readers again of the Palestine Exhibition, which is announced to be held in the Victoria Hall, Talbot Street, Nottingham, from July 7th to 21st. Prices of admission, 12 to 5.30, 1/-, 5.30 to 10 p.m. 6d., season tickets 2/6, children under 12, half-price. The railway companies offer return fares at 1/-, on production of a ticket of admission, which may be obtained from the Rector.

Time Table for East Bridgford of Trains to and from Nottingham, for July, 1909:—

Leave Bingham.	Leave Lowdham.	Arrive Nottingham		Leave Nottingham.		Arrive Bingham.	Arrive Lowdham
		G.N.R. Victoria.	M.R.	G.N.R. Victoria.	M.R.		
—	7.0	—	7.22	5.25	—	5.48	—
7.30	—	7.54	—	—	6.0	—	6.19
—	7.51	—	8.16	7.15	—	7.38	—
8.20	—	8.45	—	—	7.20	—	7.39
—	8.25	—	8.45	*8.10	—	8.34	—
—	9.5	—	9.25	—	8.35	—	8.54
* 9.43	—	10.6	—	9.25	—	9.48	—
9.51	—	10.13	—	*10.24	—	10.47	—
—	10.1	—	10.24	—	11.15	Wednesdays	11.28
10.49	Saturdays	11.10	—	—	11.25	—	11.46
—	11.19	—	11.42	11.50	—	12.13	—
11.54	—	12.18	—	—	12.45 except Sat.	—	1.3
—	1.35 except Sat.	—	1.55	—	1.5	—	1.24
*1.40	—	2.4	—	* 1.50	—	2.13	—
2.1	—	2.25	—	—	1.50	—	2.8
—	2.4	—	2.24	—	2.5 except Sat.	—	2.24
—	2.23	—	2.42	2.8	—	2.26	—
—	3.25 Fridays	—	3.40	—	2.20 Saturday	—	2.39
*3.32	—	5.50	—	2.43	—	3.6	—
—	4.22	—	4.40	—	3.42	—	4.1
4.54	—	5.18	—	4.5 Saturdays	—	4.27	—
—	4.40	—	5.0	—	4.45	—	5.4
5.2	Saturdays	5.25	—	* 5.0	—	5.23	—
—	6.29	—	6.49	—	6.10	—	6.29
6.44	—	7.8	—	6.15	—	6.38	—
—	7.44	—	8.2	—	6.40	—	6.59
8.30	—	9.3	—	—	7.45	—	8.4
9.10	—	9.34	—	7.40	—	8.6	—
—	9.42	Saturday	10.2	8.47	—	9.13	—
—	9.55 except Saturday	—	10.14	—	9.20 except Sat.	—	9.39
—	10.15 Saturday	—	10.35	9.55	—	10.19	—
—	11.12 except Thurs. & Sats.	11.30	—	—	10.40 except Thur. & Sat.	1.58	—
—	—	—	—	—	11.22 Thur. & Sat.	11.43	—
—	—	—	—	11.0 Saturdays	—	11.24	—
SUNDAYS.							
9.15	—	9.41	—	8.27	—	8.52	—
—	12.41	—	1.0	—	10.7	—	10.26
3.3	—	3.27	—	11.40	—	12.4	—
4.55	—	5.18	—	2.10	—	2.33	—
—	6.48	—	7.10	—	2.45	—	3.4
8.35	—	9.0	—	6.13	—	6.36	—
—	8.12	—	8.33	—	8.10	—	8.29
—	—	—	—	9.57	—	10.20	—

*Newark trains.

N.B. —All the G.N.R. trains stop at London Road (High Level Station) as well as at the Victoria Station.

EAST BRIDGFORD MAGAZINE.



St. Peter's Church, East Bridgford.

Services.

HOLY COMMUNION:—

On all SUNDAYS (except 1st in Month) and HOLY DAYS at 8 a.m. and after Morning Prayer on the First Sunday in the Month.

MORNING AND EVENING PRAYER:—

Sundays at 10.45, and 6.30 p.m.

Weekdays at 8 a.m. (Wednesday and Friday at 10), and 6.30 p.m. daily.

HOLY BAPTISM:—

First Sunday in month at 3, or at other Services on due notice.

CHURCHING OF WOMEN:—

Wednesday and Friday at 10, or before any Service on due notice.

SUNDAY SCHOOL:—

At 10 a.m. in the National School.

Children's Service and Catechizing in Church at 2.30.

CHURCH RESTORATION FUND.

Amount acknowledged, June 1909	1967	12	10
Rector (for Architect's charges, 1906)	50	0	0
Whit Sunday Collections	5	3	0
Church Box (May)		5	3
Feast Sunday Collections, June 27	4	12	8
Anonymous	21	0	0

£2048 13 9

It is with great thankfulness that we are able to announce that the debt on the Church Restoration Fund is now entirely paid off, by a generous donation of twenty guineas from a contributor who wishes to remain anonymous.

The accounts will be audited and fully presented in complete form, in due course. There may be one or two unpaid subscriptions included in the above, and some printing expenses will have to be incurred, but at the present time the total expenditure, including that given in the last printed statement published in 1904, has been as follows:—

EXPENDITURE.

Amount as stated, 1904	1872	9	8
Architect's charges	134	10	6
Printing	3	3	9
Bank charges, 1904—1908	34	14	11

£2044 18 10

EXTRACTS FROM PARISH REGISTERS.

MARRIAGE.

July 29th. Percy Haddock and Cecily Dorothea Milward.

BURIAL.

July 21st. William Widdowson, aged 70 years.

On Sunday, July 25th, the services in Church were taken by the Rev. F. Almond, of St. Paul's Church, Peterborough. He made a strong appeal on behalf of the home Missions of the Church, and £3 8s. 11d. was contributed to the Additional Curates Society, which has for the past 72 years done excellent work in supporting clergymen for work amongst the poor in populous places. In 1908 the Society expended £63,390, and as our population in England increases by about 5000 per week it is clear that continued and increasing effort is required to provide additional Clergy.

The Rector will be away for the last three Sundays in August, and his place will be taken by the Rev. J. H. Welwood, Rector of The Church of the Holy Spirit, Brooklyn, New York.

The G.F.S. Festival for the Bingham Branch was held at Tollerton on July 15th, and began with a service in the Church at which the Rev. T. W. Swann gave a very helpful address. A collection made for the G.F.S. Lodges and Homes of Rest, amounted to £1 8s. 5d. There were 107 members and many Associates of the Branch present. Six members had sent in good papers in competition for a prize of a Watch for the best answers to questions on the G.F.S. Guide book. The prize was won by Mildred Greasley of Whatton. After tea, sports were held in the Rectory Gardens, by the kindness of the Rector and Mrs. Macdonald, who had made such good arrangements for the day. A Sale of Work realized £3 19s. 7d.

The Summer Festival of the East Bridgford Branch of the Mothers' Union was held at Normanton House, by the kind invitation of Mrs. T. Hill, on June 3rd. A service was held in Plumtree Church at 3 p.m. at which Canon Madan, the Rector of Plumtree, preached an excellent sermon on Prov. xxxi. 10-31, describing the wisdom with which a good woman opens her mouth, and the care she gives to the ways of her household. The total number of members in the Bingham Deanery is 320, a large proportion of whom attended the meeting.

On July 6th a similar meeting for the members of the New Basford branch was held at East Bridgford by the invitation of Mrs. Hodges, which was also extended to our East Bridgford members. At the service in Church at 6 p.m. a sermon was preached by the Rev. A. Hodges, Hon. Canon of Carlisle.

A large congregation assembled in Church on Thursday, July 29th to witness the Marriage of Miss Cecily Milward, daughter of the late Mr. L. Milward, formerly of the Hall, East Bridgford, with Mr. Percy Haddock, of Cheltenham. The ceremony was performed by the Rev. C. E. L. Wright, assisted by the Rector, and the bells rang out as the party left the Church.

Time Table for East Bridgford of Trains to and from Nottingham, for August, 1909:—

Leave		Arrive Nottingham		Leave Nottingham.		Arrive	
Bingham.	Lowdham	G.N.R. Victoria	M.R.	G.N.R. Victoria.	M.R.	Bingham.	Lowdham
—	7.0	—	7.22	5.25	—	5.48	—
7.30	—	7.54	—	—	6.0	—	6.19
—	7.51	—	8.16	7.15	—	7.38	—
8.20	—	8.45	—	—	7.20	—	7.39
—	8.25	—	8.45	*8.10	—	8.34	—
—	9.5	—	9.25	—	8.35	—	8.54
* 9.43	—	10.6	—	9.25	—	9.48	—
9.51	—	10.13	—	*10.24	—	10.47	—
—	10.1	—	10.24	—	11.15	<i>Wednesdays</i>	
10.49	<i>Saturdays</i>	11.10	—	—	11.25	—	11.46
—	11.19	—	11.42	11.50	—	12.13	—
11.54	—	12.18	—	—	12.45	<i>except Sat.</i>	—
—	1.35	<i>except Sat.</i>	1.55	—	1.5	—	1.3
*1.40	—	2.4	—	* 1.50	—	2.13	—
2.1	—	2.25	—	—	1.50	—	2.8
—	2.4	—	2.24	—	2.5	<i>except Sat.</i>	2.24
—	2.23	—	2.42	2.8	—	2.26	—
—	3.25	<i>Fridays</i>	3.40	—	2.20	<i>Saturday</i>	2.39
*3.32	—	3.56	—	2.43	—	3.6	—
—	4.22	—	4.40	—	3.42	—	4.1
4.54	—	5.18	—	4.5	<i>Saturdays</i>	4.27	—
—	4.40	—	5.0	—	4.45	—	5.4
5.2	<i>Saturdays</i>	5.25	—	* 5.0	—	5.23	—
—	6.29	—	6.49	—	6.10	—	6.29
6.44	—	7.8	—	6.15	—	6.38	—
—	7.44	—	8.4	—	6.40	—	6.59
8.36	—	9.3	—	—	7.45	—	8.4
9.10	—	9.34	—	7.40	—	8.6	—
—	9.42	<i>Saturday</i>	10.2	8.47	—	9.13	—
—	9.55	<i>except Saturday</i>	10.14	—	9.20	<i>except Sat.</i>	9.39
—	10.15	<i>Saturday</i>	10.35	9.55	—	10.19	—
—	11.12	<i>except Thurs. & Sats.</i>	11.30	—	10.40	<i>except Thur. & Sat.</i>	1.58
—	—	—	—	—	11.22	<i>Thur. & Sat.</i>	11.43
—	—	—	—	11.0	<i>Saturdays</i>	11.24	—
SUNDAYS.							
9.15	—	9.41	—	8.27	—	8.52	—
—	12.41	—	1.0	—	10.7	—	10.26
3.3	—	3.27	—	11.40	—	12.4	—
4.55	—	5.18	—	2.10	—	2.33	—
—	6.48	—	7.10	—	2.45	—	3.4
8.35	—	9.0	—	6.13	—	6.36	—
—	8.12	—	8.33	—	8.10	—	8.29
—	—	—	—	9.57	—	10.20	—

*Newark trains.

N.B.—All the G.N.R. trains stop at London Road (High Level Station) as well as at the Victoria Station.

EAST BRIDGFORD MAGAZINE.



St. Peter's Church, East Bridgford.

Services.

HOLY COMMUNION:—

On all SUNDAYS (except 1st in Month) and HOLY DAYS at 8 a.m. and after Morning Prayer on the First Sunday in the Month.

MORNING AND EVENING PRAYER:—

Sundays at 10.45, and 6.30 p.m.

Weekdays at 8 a.m. (Wednesday and Friday at 10), and 6.30 p.m. daily.

HOLY BAPTISM:—

First Sunday in month at 3, or at other Services on due notice.

CHURCHING OF WOMEN:—

Wednesday and Friday at 10, or before any Service on due notice.

SUNDAY SCHOOL:—

At 10 a.m. in the National School.

Children's Service and Catechizing in Church at 2.30.

I must offer an apology for the very late appearance of our September Magazine. I must alone bear the blame, but I hope my excuse will be thought sufficient, that I found it impossible to prepare for the printer during our holiday on the Yorkshire moors. We have spent three Sundays away, one at Whitby, the next in the little country village of Egton, and the last in a small country town of Helmsley, a great centre of Church life and work; but I can honestly say I was very glad to be back again at East Bridgford Church on Sunday, September 5th. Meanwhile the services here have been taken by the Rev. J. C. Welwood, Rector of the Church of the Holy Spirit, Brooklyn, New York, who has written an enthusiastic letter on his visit.

A. D. HILL.

Llandudno, Wales,
Sept. 2nd, 1909.

Dear Mr. Hill,

In response to your request to write a letter for your Parish Magazine, I hesitate before complying. I do not like to trust myself to write impressions of you English people at East Bridgford lest I give too enthusiastic expression to my feelings. Those of us who are very fond of the English character have sometimes been thought unpatriotic to our own home. Such is not the case. I am first an American, though I have sometimes been called an "Anglo-maniac." But my estimate of your countrymen has been made after living among them. There are those who are satisfied with conclusions drawn from a single day's sojourn. A member of my parish once told me she would rather not go abroad if she had to stay long in one place. But what can one learn of the things he sees and the people he meets, who sleeps in a hundred different beds on a hundred consecutive nights, no two being less than fifty miles apart!

Individuals and nations jump to the conclusion of knowing each other on the most superficial acquaintance, and it is not always love at first sight. As Americans spend so much more time and money in England, than do the English in America, we over there ought to know you better than you know us, whether we do or not. For thousands of my countrymen settle among the people of your island for months at a time. The nations of the earth ought to get better acquainted with each other, and refrain from forming any opinion the one of the other without a positive knowledge such as would justify the opinion.

It has been my good fortune to have taken duty in England six different times, which has necessitated a residence long enough to afford some accurate information to an intelligent observer.

I did enjoy my stay in East Bridgford. Its hospitality is large, its kindness genuine, its religion real. I appreciated the attentiveness of your congregation and its hearty singing. I was deeply interested in the historic associations of the place and the many villages within easy walking distance.

So I leave with a feeling of obligation to you for your invitation to take duty for you, and for the abundant provision you made at the Rectory for the comfort of my daughter and myself. I can sign myself most truly with warm remembrances,

Faithfully yours,
J. C. WELWOOD.

On Saturday, Aug. 7th, the Church Sunday School and members of the Catechism and Miss Fox's Class were entertained at tea followed by games, at the Hall, by the kindness of Mrs. Cartwright and Miss Fox.

The School re-opens on Monday, Sept. 13th, after the Harvest Holidays. Miss Duffin has resigned her post as supplementary Teacher. Her place will be temporarily filled by Miss R. H. Gower, whom we congratulate on having satisfactorily passed her course at the Training College, Derby.

EXTRACTS FROM PARISH REGISTERS.

BAPTISMS.

Aug. 1st. Harold, son of Harry and Edith Briggs.
" " Charles Frederick, son of George and Maggie Dalton.
" 15th. Gladys, daughter of John and Ann Mary Allister.

MARRIAGES.

Aug. 9th. John Wright Wilkinson, and Ethel Nina Smith.
" 16th. Talbot Leatherland and Sarah Chapman.

BURIAL.

Aug. 31st. Jane Festing, aged 81 years.

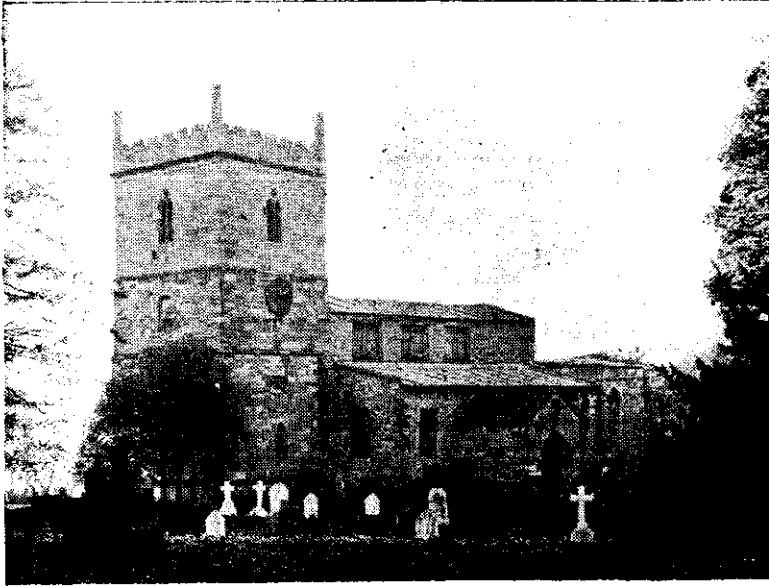
Time Table for East Bridgford of Trains to and from Nottingham, for September, 1909 :—

Leave		Arrive Nottingham		Leave Nottingham.		Arrive	
Bingham.	Lowdham.	G.N.R. Victoria.	M.R.	G.N.R. Victoria.	M.R.	Bingham.	Lowdham
—	7.0	—	7.22	5.25	—	5.48	—
7.30	—	7.54	—	—	6.0	—	6.19
—	7.51	—	8.16	7.15	—	7.38	—
8.20	—	8.45	—	—	7.20	—	7.39
—	8.25	—	8.45	*8.10	—	8.34	—
—	9.5	—	9.25	—	8.35	—	8.54
* 9.43	—	10.6	—	9.25	—	9.48	—
9.51	—	10.13	—	*10.24	—	10.47	—
—	10.1	—	10.24	—	11.15	<i>Wednesdays</i>	
10.49	<i>Saturdays</i>	11.10	—	—	11.25	—	11.28
—	11.19	—	11.42	—	—	—	11.46
11.54	—	12.18	—	11.50	—	12.13	—
—	1.35 <i>except Sat.</i>	—	1.55	—	12.45 <i>except Sat.</i>	—	1.3
*1.40	—	2.4	—	—	1.5	—	1.24
2.1	—	2.25	—	* 1.50	—	2.13	—
—	2.4	—	2.24	—	1.50	—	2.8
—	2.23	—	2.42	—	2.5 <i>except Sat.</i>	—	2.24
—	3.25 <i>Fridays</i>	—	3.40	2.8	—	2.26	—
*3.32	—	3.56	—	—	2.20 <i>Saturday</i>	—	2.39
—	4.22	—	4.40	2.43	—	3.6	—
4.54	—	5.18	—	—	3.42	—	4.1
—	4.40	—	5.0	4.5 <i>Saturdays</i>	—	4.27	—
5.2	<i>Saturdays</i>	5.25	—	—	4.45	—	5.1
—	6.29	—	6.49	* 5.0	—	5.23	—
6.44	—	7.8	—	—	6.10	—	6.29
—	7.44	—	8.4	6.15	—	6.38	—
8.36	—	9.3	—	—	6.40	—	6.59
9.10	—	9.34	—	—	7.45	—	8.4
—	9.42	<i>Saturday</i>	10.2	7.40	—	8.6	—
—	9.55 <i>except Saturday</i>	10.14	—	8.47	—	9.13	—
—	10.15 <i>Saturday</i>	10.35	—	—	9.20 <i>except Sat.</i>	—	9.39
—	11.12 <i>except Thurs. & Sats.</i>	11.30	—	9.55	—	10.19	—
				—	10.40 <i>except Thur. & Sat.</i>	—	1.58
				—	11.22 <i>Thur. & Sat.</i>	—	11.43
				11.0 <i>Saturdays</i>	—	11.24	—
SUNDAYS.							
9.15	—	9.41	—	8.27	—	8.52	—
—	12.41	—	1.0	—	10.7	—	10.26
3.3	—	3.27	—	11.40	—	12.4	—
4.55	—	5.18	—	2.10	—	2.33	—
—	6.48	—	7.10	—	2.45	—	3.4
8.35	—	9.0	—	6.13	—	6.36	—
—	8.12	—	8.33	—	8.10	—	8.29
				9.57	—	10.20	—

*Newark trains.

N.B.—All the G.N.R. trains stop at London Road (High Level Station) as well as at the Victoria Station.

EAST BRIDGFORD MAGAZINE.



St. Peter's Church, East Bridgford.

SerVICES.

HOLY COMMUNION :—

On all SUNDAYS (except 1st in Month) and HOLY DAYS at 8 a.m. and after Morning Prayer on the First Sunday in the Month.

MORNING AND EVENING PRAYER :—

Sundays at 10.45, and 6.30 p.m.

Weekdays at 8 a.m. (Wednesday and Friday at 10), and 6.30 p.m. daily.

HOLY BAPTISM :—

First Sunday in month at 3, or at other Services on due notice.

CHURCHING OF WOMEN :—

Wednesday and Friday at 10, or before any Service on due notice.

SUNDAY SCHOOL :—

At 10 a.m. in the National School.

Children's Service and Catechizing in Church at 2.30.

The Men's Service on the last Sunday in the month, which has been dropped during these three summer months, will begin again on Sunday, October 31st, at 3 p.m.

I feel encouraged to say that I think the services we had from January to June were appreciated, and that they have helped to bring together many in an effort for mutual advantage. Each one who comes is doing perhaps more than he knows, both for himself and for all of us. And I therefore renew my invitation to the men of East Bridgford, with confidence that they will look forward to a fresh start, and not forget Sunday, the 31st, inst.

CHURCH OF ENGLAND TEMPERANCE SOCIETY.

A special effort is being made during these three months by the Church of England Temperance Society to arouse fresh interest and effort in diminishing a great National evil. Our Bishop, in common with the other Bishops, desires our sympathy with the work, as will be seen from the subjoined letter which he has addressed to his Diocese. There are Temperance Societies and Bands of Hope at work amongst us, but they are generally confined to a few enthusiasts. Many do not care for their methods; some do not realize the extent of the evil; but there can be few who do not deplore the existence of the evil of intemperance. I propose therefore to bring the subject before you on a Sunday in November, for your earnest consideration; not merely to help on the effort of any special society, but to help every individual in our congregation to know how he, as a Churchman, can best fulfil his own obligation to fight manfully in the Church's battle with evil. A.D.H.

To the Clergy and Laity in the Diocese of Southwell.

Bishop's Manor, Southwell.

Dear Brethren,

At a meeting of Archdeacons and Rural Deans, lately held, I was requested to call the attention of all Churchmen to the need of perseverance in the efforts now being made to strengthen the cause of Temperance, and especially to ask for active sympathy in the Forward Movement of the Church of England Temperance Society.

For the great improvement in the habits of our people we are bound to be thankful and also to take courage. On all sides we see and hear of the gratifying results of the efforts of those who in the past have laboured for the cause of sobriety, and we do no good to that cause by belittling their results. Public opinion is assuredly altering, and public opinion is our most effective weapon.

In the formation of this sounder opinion nothing has been more valuable than the simple, but persistent appeal to Christians to recognize the ordinary obligation to control of self.

In Day and Sunday Schools, in Confirmation Classes, in the various branches of our Temperance Societies, the work of instruction has gone on, and now we see large numbers of the youth of the country enjoying their pleasure and hours of recreation without recourse of the foul practices of former generations.

But, if I speak thus hopefully, it is not because we have won the battle, but only because we are winning; that as we behold our successes we may be goaded on to strive until drunkenness is expelled from our land, and until we have freed our Empire from the greatest cause of unemployment, of physical decadence, and the degradation of woman.

I am aware that some earnest friends would have me in this letter paint the picture in much darker colours, and I could easily and truthfully do so, but at this moment I prefer to call upon all Christians to further the work in any way they please, but as Christians, to do something. The opportunities now are great, but we need many more men and women of all classes, who will actively and not silently support us in the Church of England Temperance Society.

The Forward Movement is to emphasize this call, and to make plain that behind all schemes for the social welfare of our people we need the driving force which the Holy Spirit of God alone can give. Let us therefore in our homes and in our Churches, pray to God to give us holy zeal and wisdom in our efforts to bring freedom to the enslaved.

Yours sincerely,

EDWYN SOUTHWELL.

Our Harvest Thanksgiving services will be held on Thursday, Oct. 14th, at 7.30 p.m. and also on the following Sunday. The harvest, though bountiful, has this year been attended by a great deal of anxiety and delay, but this should make us the readier to turn to the great Giver of all, with thankfulness for the many mercies which we do not always see till we are in danger of losing them.

The thank offerings will be given as on former occasions to the Restoration Fund and the Sunday School.

The preacher on Oct. 14th, will be the Rev. E. F. Crosse, Vicar of Chesterfield.

On Sunday, Oct. 31st, morning and evening, our thoughts will be turned to Foreign Missions. The Rev. J. F. Teakle, who has had great experience in Mission organization, and worked in the Diocese of Nelson, N.Z. will preach in the morning, and collections will be made for the Society for the Propagation of the Gospel in Foreign parts. A Missionary meeting will be arranged for the following Monday, which is All Saints' Day.

The most violent Thunderstorm we have experienced for many years, broke over East Bridgford at about 9 a.m. on Thursday, Sept. 23rd. Mr. Bright's house, Walnut Cottage, was struck, the flag-staff on the gable being shattered. The lightning passed through the wall to the inside, whence it was conveyed along water pipes to the other end of the house and discharged itself with a dazzling flash and loud report. A chimney on Mr. Richard Upton's house was struck and fell, doing damage to the roof; and Mr. Capern's house at Newton also suffered some damage. We must be very thankful that no more serious disaster happened.

A Tennis Tournament was held on July 24th, with very successful results, under the direction of Mr. A. Woodsend. Proceeds amounting to £8 4s. have been contributed to the Nurse Fund. Courts were lent by Miss Fox, Mr. Moor, Dr. Duff, Mrs. Hodges and Mrs. Woodsend.

EXTRACTS FROM PARISH REGISTERS.

MARRIAGES.

Sept. 23rd. Henry Millington and Rebeeca Jane Euerby.
" " William James Schofield and Mary Catherine Brooks.

BURIAL.

Sept. 17th. Alfred Ernest Robinson, aged 55 years.



EAST BRIDGFORD MAGAZINE.



St. Peter's Church, East Bridgford.

Services.

HOLY COMMUNION:—

On all SUNDAYS (except 1st in Month) and HOLY DAYS at 8 a.m. and after Morning Prayer on the First Sunday in the Month.

MORNING AND EVENING PRAYER:—

Sundays at 10.45, and 6.30 p.m.

Weekdays at 8 a.m. (Wednesday and Friday at 10), and 6.30 p.m. daily.

HOLY BAPTISM:—

First Sunday in month at 3, or at other Services on due notice.

CHURCHING OF WOMEN:—

Wednesday and Friday at 10, or before any Service on due notice.

SUNDAY SCHOOL:—

At 10 a.m. in the National School.

Children's Service and Catechizing in Church at 2.30.

With deep regret we record the death of the Rev. Percy Howard Droosten at the age of 59 years. The funeral took place on Wednesday, Oct. 27th, and was attended by very many of the neighbouring clergy and his parishioners. Mr. Droosten has been Rector of Bingham for 25 years, and was well known and respected throughout this neighbourhood.

Our Harvest Thanksgiving services took place on Thursday, October 14th, and the following Sunday, October 17th. On Thursday evening, at 7.30 the preacher was the Rev. E. F. Crosse, Vicar of Chesterfield, who took as his text Ps. ciii. 2, and in a very interesting sermon spoke of the right way of showing our thankfulness for our "creation, preservation and all the blessings of this life." The Anthem "Fear not, O land" (Joel ii. 21, 23, 24, 26) was sung by the choir and repeated on Sunday evening, when the church was crowded. The collections were, on Thursday £2 14s. 11d. for the Church Restoration Fund, and on Sunday £4 16s. 1d. for the Sunday School Fund.

The School has been closed for the week Oct. 24th to 30th, to enable the children to be employed in potato lifting. Miss H. H. Burrell has been appointed by the Managers as Supplementary Teacher. Miss R. H. Gower who has been acting temporarily as Teacher, has been now appointed Assistant Teacher of the Junior Girls' School at Clown, Derbyshire.

A lantern lecture on Church History will be given in the Temperance Hall on Wednesday, November 24th, at 7.30 p.m.

The annual meeting of the Bible Society will be held on Wednesday, Dec. the 1st, the Rector in the chair, at 7 p.m. An address will be given by the Rev. J. A. Cooper, District Secretary.

The County Council Committee of Education has arranged to give five lectures on "Health," illustrated by lantern, on Mondays, beginning November 15th.

The East Bridgford Choral Society began its winter practices on Tuesday, October 26th, with choruses from Mendelssohn's Oratorio 'St. Paul.' Mrs. William Richardson will continue to act as Secretary, assisted by Miss Sharpe. It is to be hoped that the members will be regular at the practices, on Tuesday evenings at 7.30.

CHURCH RESTORATION FUND.

Amount acknowledged, August 1909	£ 2048	13	9
J. H. Etherington-Smith, Esq.	1	0	0
Miss Hill	2	2	0
Harvest Thank-offerings	2	4	11
Mrs. Boulby	3	7	0
Church Box, June—October	13	7	
By Error in accounts	1	7	
Total received Oct. 27th	£ 2058	2	10

The balance sheet of the Church Restoration Fund was submitted to the Church Council at the quarterly meeting held on Oct. 26th and is now given below. A full list of all subscriptions and other sums received since the last statement was printed in January 1904, will shortly be published.

CHURCH RESTORATION FUND.

Balance Sheet, Oct. 26th, 1909.

			£	s.	d.				£	s.	d.
Expended on Work done ..	2007	0	2	Subscriptions ..	1551	3	9				
Printing ..	3	3	9	Bazaars, Sales, etc. ..	374	16	3				
Bank Changes ..	34	14	11	Collections in Church ..	96	0	8				
				Church Box ..	14	15	10				
				Interest at Bank ..	21	6	4				
Total	2044	18	10								
Balance in hand, Oct. 27, 1909	13	4	0								
	£ 2058	2	10						£ 2058	2	10

The Church Council resolved that those collections in Church which have been assigned for the present year to the Church Restoration Fund, should be now definitely appropriated to the provision of new lamps for the Nave. Mr. Turner expressed his willingness to provide one, and Mr. Hodges promised two lamps, which gives us a good start, and we may therefore hope soon to obtain all the seven lamps required.

The Total Abstinence Society has arranged meetings for Tuesdays, Nov. 9th and 30th.

We hear that Captain Jeffcock kindly promises an entertainment on behalf of the Nurse Fund on Dec. 2nd.

Sunday, Nov. 28th, being Advent Sunday, there will be a Celebration of Holy Communion at Midday (instead of on Dec. 5th), as well as at 8 o'clock as usual.

Our readers will no doubt be interested in the following summary of all amounts received by subscriptions, collections in Church, etc, for the year ending Easter, 1909, taken from the Rector's Annual Statement of Parish Accounts, lately issued for that year.

	£	s.	d.
Church Expenses (Churchwardens' Accounts)	59	19	0
Alms to Sick and Poor	9	8	0
Diocesan Church Societies	6	2	1
Home Missions (Jews)	1	7	8
Foreign Missions (S.P.G.)	13	13	9
Pan-Anglican Thank-offering, June 24th, 1908	17	2	3
Hospitals	7	16	2
Choir Outing, Sept., 1908	3	18	9
Church Building Association	0	10	5
Waifs and Strays	0	7	6
Church Restoration (Debt to Bank, 1908-9)	67	11	6
Italian Earthquake Relief Fund	4	1	2
Church Army	1	19	6
Belfry Fittings and Repairs (A Gift)	10	7	0
East Bridgford School (New Offices)	89	10	10
Sunday School	8	16	10
Clothing Club (Subscriptions)	5	9	0
Coal Club (Ditto)	11	3	6
	<u>£319</u>	<u>4</u>	<u>11</u>

EXTRACTS FROM PARISH REGISTERS.

BAPTISMS.

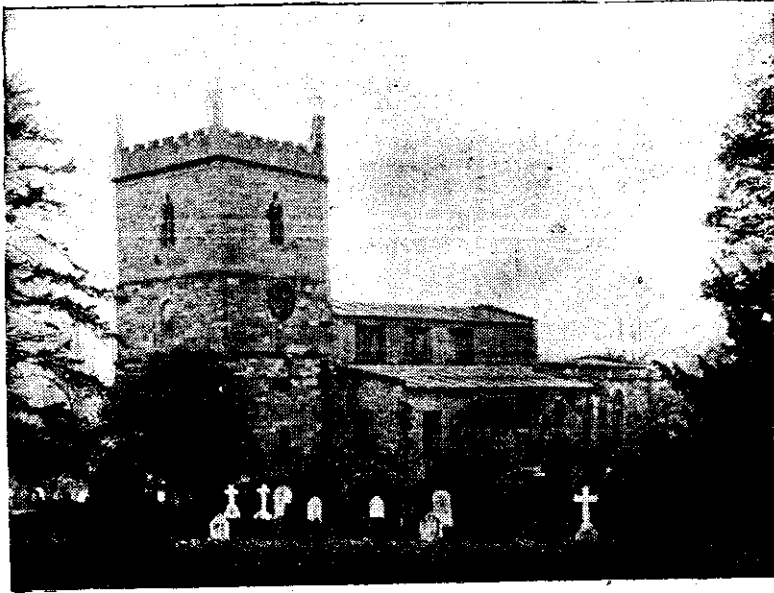
- Oct. 10th. Harry William, son of Harry and Mabel Alice Stanley.
 " " Alfred Guy, son of Alfred and Emily Lavinia Knight.
 " 20th. James Charlton, son of James and Celia Smart.

BURIAL.

- Oct. 13th. Mary Eliza Euerby, aged 52 years.



EAST BRIDGFORD MAGAZINE.



St. Peter's Church, East Bridgford.

Services.

HOLY COMMUNION:—

On all SUNDAYS (except 1st in Month) and HOLY DAYS at 8 a.m.
and after Morning Prayer on the First Sunday in the Month.

MORNING AND EVENING PRAYER:—

Sundays at 10.45, and 6.30 p.m.

Weekdays at 8 a.m. (Wednesday and Friday at 10), and 6.30 p.m. daily.

HOLY BAPTISM:—

First Sunday in month at 3, or at other Services on due notice.

CHURCHING OF WOMEN:—

Wednesday and Friday at 10, or before any Service on due notice.

SUNDAY SCHOOL:—

At 10 a.m. in the National School.

Children's Service and Catechizing in Church at 2.30.

This number of the Magazine will convey to our Readers our Christmas Greetings. We must never forget the reason of Christmas festivities, of the exchange of Christmas gifts, and of our Christmas greetings. It is that our Lord Jesus Christ began his earthly life on that day, and came to bring peace and goodwill into the lives of all. If our words are to be sincere, and our actions the real outcome of Christian feeling, we must take care that love and kindness shall really be shewn by us, and that Christ Jesus has really come into our lives.

There will be Advent Services, with instructions, on Wednesday evenings, December 8th, 15th and 22nd.

CHRISTMAS DAY, Saturday, Dec. 25th. The Holy Communion will be celebrated at 8 a.m. and at Mid-day, Morning Prayer at 10.45 and Evening Prayer at 6.30. On the Sunday after Christmas the Holy Communion will be celebrated at 8 a.m., and also on Saturday, January 1st, 1910.

Our New Year's Tea will take place on Tuesday, Jan. 4th, 1910, when all parishioners and friends are cordially invited. Tea will be laid at 5 p.m. in the Temperance Hall at 6d. a head, and for those who may find it convenient to come later, at 5.45. Children not in charge of their parents will not be admitted until 5.45. Parents with their children under 14 can obtain a family ticket for 1/6, if they come together. An Entertainment will follow at 7 p.m. Admission 3d. to those who have not taken a ticket for tea.

CHURCH OF ENGLAND TEMPERANCE SOCIETY.—The Lord Bishop of Southwell has kindly promised to come to East Bridgford on Friday, December 10th, at 7.30 p.m. to address a public meeting on behalf of the Forward movement of this Society. Our readers will remember his earnest letter, printed in the October Magazine, and we now hope that his presence and voice among us will encourage all Christians actively and openly to do their part in what is at once the cause of the Nation and the cause of God.

The Total Abstinence Society have arranged a meeting on Dec. 21st.

FOREIGN MISSIONS S.P.G.—The Rev. J. F. Teakle, of the Society for the Propagation of the Gospel in Foreign Parts, preached on Sunday morning, Oct. 30th, and the Rev. F. C. Cursham, Vicar of Flintham in the evening. On Monday evening, Mr. Teakle gave a stirring address on Missionary work in the Diocese of Christchurch, New Zealand, first among English settlers and secondly among the native Maoris. The Collections on Sunday amounted to £4 16s. 8d., and at the meeting £1 5s. 7d.

The Diocesan Inspector, Rev. T. W. Swann, will visit the School on Friday morning, December 17th.

The next Men's Service will be held on January 2nd, the first Sunday in the New Year, at 3 p.m.

G.F.S.—Meetings for members are fixed on Mondays; till Dec. 13th, however attendance at the Health Lectures will be substituted for the ordinary meeting. After that date the meetings will be at the Rectory at 6.30.

Senior candidates' meetings are at East Bridgford Hall on Thursdays.

Junior candidates meet at the Rectory, Saturdays at 2.30.

A Bible Class for G.F.S. elder members and their friends is held at the Rectory on Fridays at 7 o'clock.

MOTHERS' UNION.—The fourth quarterly meeting was held at the Rectory, on Nov. 11th. This was the business meeting for the year, when subscriptions were paid up, accounts balanced, &c. Arrangements were made for M.U. work for in 1910. At the conclusion of the business, Mr. Hodges kindly gave a short address on Home Management. She showed the value of tidiness in the home and good management of time, and careful thought for home comfort generally. The husband of all things likes to find a comfortable room to rest in on return from work. Prayers by the Rector concluded the meeting.

BAPTISM.

(British Columbia), Edna May, daughter of John and Mary Elizabeth Silman, born Sept. 14th.

Time Table for East Bridgford of Trains to and from Nottingham, for December, 1909 :—

Leave		Arrive Nottingham		Leave Nottingham.		Arrive		Arrive
Bingham.	Lowdham.	G.N.R.	M.R.	G.N.R.	M.R.	Bingham.	Lowdham	Lowdham
—	—	Victoria.	—	Victoria.	—	—	—	—
—	7.0	—	7.22	5.25	—	—	5.48	—
7.30	—	7.54	—	—	6.0	—	—	6.19
—	7.51	—	8.15	7.15	—	7.38	—	—
8.20	—	8.45	—	—	7.20	—	—	7.39
—	8.25	—	8.45	*8.10	—	—	8.34	—
—	9.5	—	9.25	—	8.35	—	—	8.54
* 9.43	—	10.6	—	9.25	—	—	9.48	—
9.51	—	10.13	—	*10.24	—	—	10.47	—
—	10.1	—	10.24	—	11.15	<i>Wednesdays</i>		11.28
10.49	<i>Saturdays</i>	11.10	—	—	11.25	—	—	11.46
—	11.19	—	11.42	—	—	—	—	—
11.54	—	12.18	—	11.50	—	12.13	—	—
—		—		—		12.45 <i>except Sat.</i>		—
—	1.35 <i>except Sat.</i>	—	1.55	—	—	—	—	1.3
*1.40	—	2.4	—	* 1.50	1.5	—	—	1.24
2.1	—	2.25	—	—	1.50	—	2.13	—
—	2.4	—	2.24	—	2.5	—	—	2.8
—	2.23	—	2.42	2.8	—	—	2.20	—
—	3.25 <i>Fridays</i>	—	3.40	2.43	—	—	3.6	—
*3.32	—	3.56	—	—	3.42	—	—	4.1
—	4.22	—	4.40	4.8 <i>Saturdays</i>	—	—	4.27	—
4.54	—	5.18	—	—	4.45	—	—	5.1
—	4.40	—	5.0	* 5.0	—	—	5.23	—
5.2	<i>Saturdays</i>	5.25	—	—	6.10	—	—	6.29
—	6.31	—	6.50	6.15	—	—	6.38	—
6.44	—	7.8	—	—	6.40	—	—	6.59
—	7.44	—	8.5	—	7.45	—	—	8.4
*8.48	—	9.12	—	7.40	—	—	8.6	—
9.10	—	9.34	—	8.47	—	—	9.13	—
—	9.42	<i>Saturday</i>	10.2	—	9.20 <i>except Sat.</i>	—	—	9.39
—	9.55 <i>except Saturday</i>	—	10.15	—	—	10.19	—	—
—	10.15 <i>Saturday</i>	—	10.35	—	9.55	—	10.40 <i>except Thur. & Sat.</i>	10.58
—	—	—	—	—	—	—	11.22 <i>Thur. & Sat.</i>	11.43
—	11.12 <i>except Thurs. & Sats.</i>	—	11.30	11.0	<i>Wed. and Sat.</i>	—	11.24	—

SUNDAYS.

—	12.41	—	1.0	—	10.7	—	10.26
3.3	—	3.27	—	11.40	—	12.4	—
4.55	—	5.18	—	2.10	—	2.33	—
—	6.48	—	7.10	6.13	—	6.36	—
8.35	—	9.0	—	—	8.10	—	8.29
—	—	—	—	9.57	—	10.20	—

*Newark trains.

N.B.—All the G.N.R. trains stop at London Road (High Level Station) as well as at the Victoria Station.