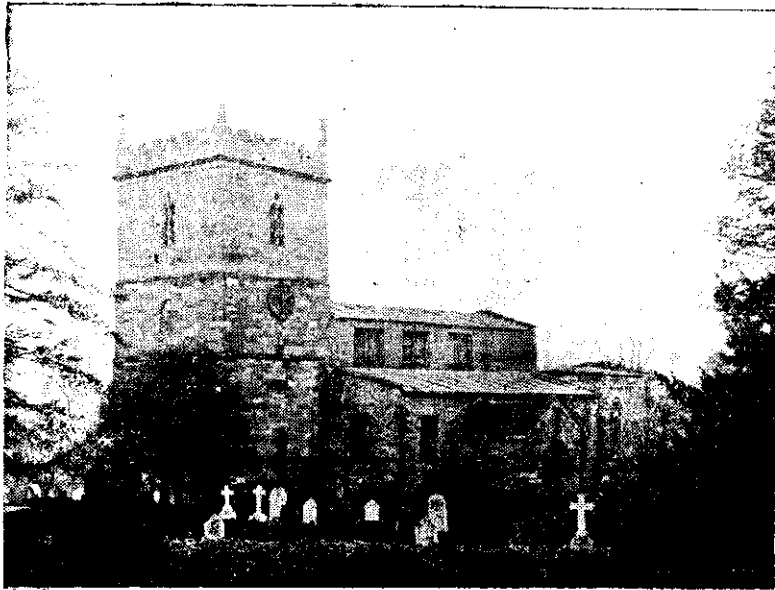


EAST BRIDGFORD MAGAZINE.



St. Peter's Church, East Bridgford.

Services.

HOLY COMMUNION :—

On all SUNDAYS (except 1st in Month) and HOLY DAYS at 8 a.m. and after Morning Prayer on the First Sunday in the Month.

MORNING AND EVENING PRAYER :—

Sundays at 10.45, and 6.30 p.m.

Weekdays at 8 a.m. (Wednesday and Friday at 10), and 6.30 p.m. daily.

HOLY BAPTISM :—

First Sunday in month at 3, or at other Services on due notice.

CHURCHING OF WOMEN :—

Wednesday and Friday at 10, or before any Service on due notice.

SUNDAY SCHOOL :—

At 10 a.m. in the National School.

Children's Service and Catechizing in Church at 2.30.

A HAPPY NEW YEAR to all our Readers.

In 1910, Ash Wednesday falls on Feb. 9th ; Easter Day, March 27th ; Ascension Day, May 5th ; Whit-Sunday, May 15th ; and Advent Sunday, Nov. 27th. There will be two Sundays after Epiphany and twenty-six Sundays after Trinity.

On Dec. 17th, the Rev. T. W. Swann, Diocesan Inspector, examined the School in Religious Knowledge. There were 108 children present at the examination. He awarded the mark "very good" to all the subjects presented, and "good" to the written work. His general report is as follows :—

" Division I.—The Infants have been cheerily taught, and answered very generally and promptly. Division II.—I am glad to report a great improvement in the written work, especially in the spelling. The answering was very ready, and gave evidence of thorough and regular instruction.

Division III.—The Children deserve great commendation for their knowledge of the Prayer book. The Catechism was well known as well as the Old and New Testament subjects. Great praise is due to all who have taken part in the work. THOS. W. SWANN."

The Rector's prizes are awarded to Evelyn Arthur Manchester and Evelyn Bateman, Robert Gower and Florrie Smith, Arthur Pacey and Erna Raynor.

On Sunday morning, Dec. 19th, a heavy fall of snow covered the ground. Snow fell again on Monday, but on the following Wednesday, a rapid thaw set in, in consequence of which the Trent rose rapidly, flooding the whole valley and covering the road to Gunthorpe Bridge from the 23rd to the 27th.

Christmas Day came to us mild and bright. The Morning services were well attended, especially the celebration of Holy Communion at 8 a.m. The offerings at the Services, amounting to £4 12s. 1d. were for the provision of new lamps, which is the next work to be undertaken in the fitting up of the Church.

The Bishop of Southwell was the speaker at a meeting in the Temperance Hall on Friday, December 10th. He gave a very stirring and helpful address on Temperance, full of plain common sense, first pointing out the great advance that has been made, and illustrating it with his own experience in a poor London parish, and encouraging those who bewail the evil, with references to the improvement seen in navy and army. Then fearlessly

criticizing the mistaken zeal of those who looked on Temperance as the only "Gospel," and commending the earnest work that is done by many self-denying workers, he showed how much there is to be done by all who are true to their Christian principles, in living a manly self-controlled life, and in helping others to do the same.

Mr. Hodges proposed a vote of thanks which was seconded by Mr. John Wilkinson ; and the meeting was closed after singing the Doxology by the blessing given by the Bishop.

The annual meeting of the Bible Society was held on Wednesday, Dec. 1st, at 7 p.m. The Rev. J. A. Cooper gave a most interesting address, unfortunately to a small audience, on the value of unstinted supply of the Holy Scriptures in Missionary Work. The Rector was in the chair, and Mr. W. A. Hodges cordially thanked the Speaker for his address.

The Total Abstinence Society announce meetings to be held on January 11th and February 1st.

A very successful variety entertainment was kindly provided by Captain Jeffcock, assisted by friends, on Dec. 2nd. A Bigaphone Band contributed to the amusement of the audience, and the sum of £12 13s. 6d. was obtained for the District Nurse Fund.

G.F.S.—Meetings for the members will be held as usual at the Rectory, on Mondays at 6.30 p.m.

A peal on the Church bells welcomed Mr. and Mrs. Duff, on Dec. 16th, on their return from the South of France, after their marriage, which took place at Grantham on Nov. 30th. A presentation had been made previously of a pair of silver candlesticks, from East Bridgford villagers, and of a silver hot water jug, from the King Edward Club and Cricket Club.

By the death of Mr. John Upton, we have lost a neighbour, who had won the respect of all by his readiness to help and to do his part in many useful things. The Church choir, of which he was a member, attended his funeral, and a muffled peal was rung in the evening of the day.

Sunday, Jan. 30th, is Hospital Sunday.

The next Men's Service will be held on Sunday, Feb. 6th, at 3 p.m.

EXTRACTS FROM PARISH REGISTERS.

BAPTISMS.

Dec. 25th. Violet, daughter of John and Emma Cooper.

BURIALS

Dec. 15th. Mary Taylor, aged 81 years.

„ 22nd. John Upton, aged 37 years.

Dec. 7 (at Harby, Leicestershire) Elizabeth Baguley, aged 71 years.

During January we shall have a General Election. Let us remember that the possession of a vote is a solemn responsibility of our manhood, and to use it thoughtfully and wisely is a part of our Duty to our neighbour. God's blessings upon our land, peace, health and prosperity, come to a nation from the love, obedience and religion, which begin in the home, and bind together the members of the state, "that thy days may be long in the land which the Lord Thy God giveth thee."

Our Bishop has addressed the following letter to the Diocese :—

Dear Brethren,

The more bitter the Spirit is likely to be in the political world the more necessary is it for the Church to preach the Gospel of Good Will during the Holy Season of Christmastide. If passions are to be aroused, let us be careful to appeal for greater recognition of our common brotherhood in Christ. If party spirit leads to untruthfulness and false imputation of motives, then let us plead for fairness and justice in judgments upon our neighbours.

That we are passing through a severe crisis no one can doubt. Let us, therefore, "be slow to speak, slow to wrath," but earnest in prayer that God may guide us aright and still bless our Fatherland.

I append a prayer which I authorise for public and suggest for private use.

Finally, let me send greeting to all, praying that for you and yours there may be joy and peace.

Yours sincerely,

EDWYN SOUTHWELL.

PRAYER FOR USE BEFORE THE ELECTION.

I.

V. He shall refrain the spirit of princes.

R. *And is wonderful among the Kings of the Earth.*

GOVERN, O Lord, the minds of all who are called to choose faithful men into the great council of the nation, that considering their sacred trust, and the great issues thereof, they may exercise the same in all godliness and honesty ; through Jesus Christ our Lord. *Amen.*

II.

Most gracious God, we humbly beseech Thee, as for this kingdom in general, so especially at this time, that electors may faithfully and wisely make choice of fit persons to serve, under our most religious and gracious King, in the High Court of Parliament, that all things may be so ordered and settled by their endeavours, upon the best and surest foundations, that peace and happiness, truth and justice, religion and piety, may be established among us for all generations. These, and all other necessities, for them, for us, and Thy whole Church, we humbly beg in the Name and Mediation of Jesus Christ, our most blessed Lord and Saviour. *Amen.*

EAST BRIDGFORD MAGAZINE.



St. Peter's Church, East Bridgford.

Services.

HOLY COMMUNION:—

On all SUNDAYS (except 1st in Month) and HOLY DAYS at 8 a.m. and after Morning Prayer on the First Sunday in the Month.

MORNING AND EVENING PRAYER:—

Sundays at 10.45, and 6.30 p.m.

Weekdays at 8 a.m. (Wednesday and Friday at 10), and 6.30 p.m. daily.

HOLY BAPTISM:—

First Sunday in month at 3, or at other Services on due notice.

CHURCHING OF WOMEN:—

Wednesday and Friday at 10, or before any Service on due notice.

SUNDAY SCHOOL:—

At 10 a.m. in the National School.

Children's Service and Catechizing in Church at 2.30.

LENT, 1910.

The first day of Lent, Ash Wednesday, falls on February 9th. The Holy Communion will be celebrated at 8 o'clock, Morning prayer at 11, and Evening service with Sermon at 7 p.m.

During the four following weeks I propose to hold a Lantern Service on Friday, Feb. 18th, and the three following Thursday evenings, Feb. 24th, and March 3rd and 10th, at 7 o'clock in the Temperance Hall. I hope this may not only be a means of drawing many to hear the Gospel story of our Lord's life and death for us, but may also afford for earnest Church people such instruction as the solemn season of Lent is intended to bring to them. I earnestly ask for your co-operation in this scheme, that nothing may detract from the reverence and devotion which is so essential.

On Friday evenings, there will be a short sermon in Church at the 6.30 evensong; or if it seems to be desired, this service might be held at a later time.

A. D. HILL, *Rector.*

The next Men's Service is on Feb. 6th, and the one following will be held on the first Sunday in March, (the fourth Sunday in Lent) March 6th, at 3 p.m. Subject, The bondage of the Israelites in Egypt.

The Bishop of the Diocese will hold a Confirmation at Screveton Church, on Wednesday, March 23rd. The names of those who desire to be presented for Confirmation should be given to the Rector at once, in order that arrangements should be made for due preparation. In the case of adults the Rector will always be glad to make any convenient arrangement, as of course they would not be required to attend classes with younger persons. It is to be hoped that next year the Bishop will visit East Bridgford for the purpose.

MOTHERS' UNION.—The first quarterly meeting will be held during this month, notice of which will be sent to members in due course.

The Total Abstinence Society announces a meeting for Tuesday, Feb. 22.

Friday, Jan. 21st, was the day appointed for the Polling in the Newark division of Nottinghamshire, resulting in the re-election to Parliament of Mr. J. R. Starkey, the Conservative candidate.

The new Parliament will be opened by His Majesty King Edward VII on February 15th.

Our New Year's Tea took place on Tuesday, Jan. 4th, and was attended by about 290 people, not reckoning infants in arms. Tea tables were provided and superintended by Mrs. Hill, Mrs. Turner, Mrs. Hodges, Mrs. Barker, Mrs. Woodsend, Miss Fox, Mrs. Pickford, Mrs. Case, Mrs. Goldston and Mrs. Field.

At the Entertainment which followed, songs were kindly contributed by Mrs. Swingler and Miss Martin, Mr. T. Lee, Mr. R. Wilkinson, and Mr. Waterfield; and performances were given by Handbell ringers. Then came a lantern exhibition including a story, "Robin's promise," the Eatonswill Election, and some Swiss and mountain scenery by Mr. A. Woodsend. The proceeds amounted to £4 14s. 6d.

JALLAND LIBRARY.—The annual meeting of the Committee was held on Jan. 24th. The Committee hope that a larger number of subscribers will avail themselves of the advantage of the Library. All persons residing in East Bridgford are entitled to membership on payment of a subscription, in advance, of 1/- annually, 6d. half-yearly, or 3d. quarterly. The Library is open at the school every Monday from 6 to 7 p.m.

EXTRACTS FROM PARISH REGISTERS.

BAPTISM.

Jan. 23rd. Joyce Mary, daughter of John Wright and Ethel Nina Wilkinson.

MARRIAGES.

Jan 17th. George Hallam and Jane Metheringham.

„ 24th. Clarence Shipman Widdison and Eliza Ann Smith.

BURIAL.

Jan. 1st. Mary Ann Green, aged 75 years.



Time Table for East Bridgford of Trains to and from Nottingham, for February, 1910 :—

Leave Bingham.	Leave Lowdham	Arrive Nottingham		Leave Nottingham.		Arrive Bingham.	Arrive Lowdham
		G.N.R. Victoria.	M.R.	G.N.R. Victoria.	M.R.		
—	7.0	—	7.22	5.25	—	5.48	—
7.30	—	7.54	—	—	6.0	—	6.19
—	7.51	—	8.15	7.15	—	7.38	—
8.20	—	8.45	—	—	7.20	—	7.39
—	8.25	—	8.45	*8.10	—	8.34	—
—	9.5	—	9.25	—	8.35	—	8.54
* 9.43	—	10.6	—	9.25	—	9.48	—
9.51	—	10.13	—	*10.24	—	10.47	—
—	10.1	—	10.24	—	11.15	<i>Wednesdays</i>	11.28
10.49	<i>Saturdays</i>	11.10	—	—	11.25	—	11.46
—	11.19	—	11.42	11.50	—	12.13	—
11.54	—	12.18	—	—	12.45 <i>except Sat.</i>	—	1.3
—	1.35 <i>except Sat.</i>	—	1.55	—	1.5	—	1.24
* 1.40	—	2.4	—	* 1.50	—	2.13	—
2.1	—	2.25	—	—	1.50	—	2.8
—	2.4	—	2.24	—	2.5	—	2.24
—	2.23	—	2.42	2.8	—	2.26	—
—	3.25 <i>Fridays</i>	—	3.40	2.43	—	3.6	—
* 3.32	—	3.56	—	—	3.42	—	4.1
—	4.22	—	4.40	4.5 <i>Saturdays</i>	—	4.27	—
4.54	—	5.18	—	—	4.45	—	5.1
—	4.40	—	5.0	* 5.0	—	5.23	—
5.2	<i>Saturdays</i>	5.25	—	—	6.10	—	6.9
—	6.31	—	6.50	6.15	—	6.38	—
6.44	—	7.8	—	—	6.40	—	6.59
—	7.44	—	8.5	—	7.45	—	8.4
* 8.48	—	9.12	—	7.40	—	8.6	—
9.10	—	9.34	—	8.47	—	9.13	—
—	9.42	<i>Saturday</i>	10.2	—	9.20	—	9.39
—	9.55 <i>except Saturday</i>	—	10.15	9.55	—	10.19	—
—	10.15 <i>Saturday</i>	—	10.35	—	10.40 <i>except Thur. & Sat.</i>	—	10.58
—	11.12 <i>except Thurs. & Sats.</i>	11.30	—	—	11.22 <i>Thur. & Sat.</i>	—	11.43
—	—	—	—	11.0	<i>Wed. and Sat.</i>	11.24	—
SUNDAYS.							
—	12.41	—	1.0	—	10.7	—	10.26
3.3	—	3.27	—	11.40	—	12.4	—
4.55	—	5.18	—	2.10	—	2.33	—
—	6.48	—	7.10	6.13	—	6.36	—
8.35	—	9.0	—	—	8.10	—	8.29
—	—	—	—	9.57	—	10.20	—

*Newark trains.

N.B.—All the G.N.R. trains stop at London Road (High Level Station) as well as at the Victoria Station.

EAST BRIDGFORD MAGAZINE.



St. Peter's Church, East Bridgford.

Services.

HOLY COMMUNION:—

On all SUNDAYS (except 1st in Month) and HOLY DAYS at 8 a.m. and after Morning Prayer on the First Sunday in the Month.

MORNING AND EVENING PRAYER:—

Sundays at 10.45, and 6.30 p.m.

Weekdays at 8 a.m. (Wednesday and Friday at 10), and 6.30 p.m. daily.

HOLY BAPTISM:—

First Sunday in month at 3, or at other Services on due notice.

CHURCHING OF WOMEN:—

Wednesday and Friday at 10, or before any Service on due notice.

SUNDAY SCHOOL:—

At 10 a.m. in the National School.

Children's Service and Catechizing in Church at 2.30.

LENT SERVICES.—After careful consideration by the Church Council, it was decided that the five Lantern Services arranged for this Lent, should be held in Church, at 8 p.m. on Friday evenings. This plan is often adopted in town churches, and the reverent attention with which the services have been followed seems fully to justify our decision.

The full list of Services is as follows :—

General Subject : “The men who crucified Christ,” at 8 p.m., on Friday, February 18th, “Pilate” ; 25th, “The Multitude” ; March 4th, “Judas” ; 11th, “Caiaphas,” ; 18th, “Herod.”

On Wednesday evenings, a short address is given at Evensong at 6.30 p.m.

In Holy Week, the Holy Communion will be celebrated on Maundy Thursday, March 24th, at 8 a.m.

ON GOOD FRIDAY, the Litany will be said at 8 a.m., Morning Service at 11, and Evening Service at 8 p.m.

From 2 to 3 p.m. short addresses will be given, with hymns, on the words of Our Lord Jesus Christ from the Cross, so arranged that anyone may come in and remain for a part of the time only, if desirous of doing so. The alms will be given to Mission work among Jews in the Holy Land.

ON EASTER DAY, March 27th, the Holy Communion will be celebrated at 7, 8, and midday. The Easter Offerings will be for the Church Restoration Fund, and will be specially devoted to the New Lamps for the Church.

The first quarterly meeting for 1910 of the Mothers' Union will be held by kind invitation of Mrs. Hodges, at her house on Thursday, Mar. 3rd, at 2.30 ; to be followed by a service in Church at 3.30 p.m.

The Lent weekly work party is held on Tuesdays ; and the work done will be given to the Bishop's Church Extension fund for the archdeaconry of Nottingham.

The Hospital Sunday Collections, made on January 30th were as follows :

	£	s	d
Collection at offertory 8 a.m.		18	2
" at Morning Prayer	4	18	1½
" at Evening Prayer	1	2	9
Received later		8	6
	<hr/>		
	£7	7	6½

Two guineas were sent to the Women's Hospital, and £5 5s. 6d, to the General Hospital, at Nottingham.

The Ash Wednesday collections, £1 3s. 7d., were given to the Nottingham Rescue Home, Southwell House.

MEN'S SERVICES.—The next Men's service will be held on March 6th, Subject : The bondage of the Israelites in Egypt ; and the following one will be on April 3rd, the Sunday after Easter, Subject : The deliverance from Egypt. These services are held at 3 p.m. on the first Sunday in the month.

A Confirmation will take place at Screveton Church on Wednesday, March 23rd, at 3 p.m. by the Lord Bishop of Southwell.

The Total Abstinence Society announce meetings on Tuesdays, March 15th and April 5th.

The Band of Hope gave their annual concert on Thursday, January 27th with much success before a full room.

The Primitive Methodist Choir, assisted by friends gave a concert on Thursday, February 17th in the Temperance Hall. Gaul's "Holy City" was performed with much credit, as well as other musical items.

THE ANNUAL EASTER VESTRY will be held in the School at 7 o'clock, on Tuesday in Easter Week, March 29th, for the appointment of churchwardens and sidesmen, the presentation of the churchwardens' accounts, and such other business as may be brought forward.

ELECTION OF LAY REPRESENTATIVES.—At the close of the Vestry Meeting, an election of two Lay Representatives for our Parish will be held. The Representatives are elected for three years, and must be male communicant members of the Church of England. Their duties are to attend Conferences held from time to time in the Rural Deanery of Bingham, and to elect from among their number, lay members of the Diocesan Conference. Inasmuch as the Lay Members of the Diocesan Conference choose the Lay Members of the *Representative Council* of the Church of England it is important that each Parish should do its part in the chain of representation. Each parish should therefore have its list of qualified voters, who have to sign a declaration that they are baptized and confirmed ; and who must be, if males, of full age, and resident ; if females, entitled by ownership or occupation to a vote at the Vestry of the parish. A form of Declaration for signature will be found in the Vestry after any service, for the next few weeks.

CRICKET CLUB.—A general meeting of members was held on Tuesday, February 22nd, the Rector being in the chair. A resolution was passed expressing a sense of the great loss the Club had sustained by the death of the Hon. Secretary, Mr. John Upton, and conveying the sympathy of the members to his family.

The accounts were presented and passed, showing a balance in hand of £3 12s. 6½d. The officers of the Club for the ensuing year were elected as follows :—*President*, C. H. Duff, Esq., *Captain*, Mr. E. E. Coville, *Hon. Sec. and Vice Captain*, Mr. E. N. Sears, *Hon. Treasurer*, Rev. A. D. Hill, *Committee*, Messrs. F. Sharp, C. Moor, J. Fletcher, A. Ellis, T. Lee, H. P. Goldston, and A. Woodsend. *Groundsman*, G. Stanley.

KING EDWARD CLUB.—Two "Home and Home" Whist matches have been played during February with Scarrington, both resulting in a victory for East Bridgford, the first by 16 points to 10, the second by 14 points to 11.

Mr. W. Richardson has received the following letter from the General Post Office, dated January 3rd, 1910.

“ With reference to your letter of the 26th of November last, respecting the telegraph line in Trent Lane, East Bridgford, I am directed by the Postmaster General to state for the information of the memorialists that arrangements are being made to adopt a different route and to remove the poles to which they object.”

The line, which is understood to be a through main telephone route from London to Newcastle, will take a more direct course from the Foss, along “Newton street” bridle path, to Gunthorpe bridge, instead of the awkward and circuitous way by Kirk Hill and Trent Lane. We are much obliged to the authorities for their decision to remove the posts which would have disfigured a very picturesque part of our village.

G.F.S.—The annual social gathering was held in the Temperance Hall on Monday, February 7th, when a party of over 100 assembled. A Sketch, entitled “Afternoon Tea” was performed by Miss Millington, Miss Walker, Mrs. Swingler, Miss M. Smart, Miss G. Poole and Miss N. Wombwell; Recitations by Miss E. Barker, Miss H. Marriott, and Miss E. Euerby; song by Miss Sharp, and piano by Miss Sharp, Miss Jesson and Miss Manchester, Refreshments were provided by the Associates and friends.

EXTRACTS FROM PARISH REGISTERS

BAPTISM

February 1st Maurice, son of Maurice and Nellie Walker.

MARRIAGE.

January 22nd At S. Saviour's Church, Nottingham, Ernest Goddard and Mary Lizzie Euerby



EAST BRIDGFORD MAGAZINE.



St. Peter's Church, East Bridgford.

Services.

HOLY COMMUNION:—

On all SUNDAYS (except 1st in Month) and HOLY DAYS at 8 a.m.
and after Morning Prayer on the First Sunday in the Month.

MORNING AND EVENING PRAYER:—

Sundays at 10.45, and 6.30 p.m.

Weekdays at 8 a.m. (Wednesday and Friday at 10), and 6.30 p.m. daily.

HOLY BAPTISM:—

First Sunday in month at 3, or at other Services on due notice.

CHURCHING OF WOMEN:—

Wednesday and Friday at 10, or before any Service on due notice.

SUNDAY SCHOOL:—

At 10 a.m. in the National School.

Children's Service and Catechizing in Church at 2.30.

his urgent need, for the support of living agents, fresh buildings, and religious education, which is such a heavy burden. He asks for 25 more clergy, 14 more lay readers, 10 new churches, 23 new mission rooms, 48 new schools. Such a list as this, for one diocese, should open the hearts of Church people and make every parish, especially those already well equipped with Church and clergy, desire to do its part in helping our energetic Bishop to carry on his work.

A great meeting will be held in the Albert Hall, Nottingham, on Friday, April 29th, at 3 p.m., to further the work of the Church Extension Societies for the two Archdeaconries of Derby and Nottingham. The Duke of Devonshire will preside, and Church people are invited by the Bishop to be present.

The Choral Society will give a Concert in the Temperance Hall, on Tuesday, April 12th, when Mendelssohn's Oratorio "S. Paul," will be performed, with band accompaniment, under the conductorship of the Rev. J. Standish.

LOCAL GOVERNMENT ELECTIONS.—The County Councillor for the Bingham Division, is Mr. George Brown.

The Parish Council for East Bridgford elected on March 14th, is as follows:—C. Allwood, W. Alvey, E. E. Colville, H. Crossland, T. Euerby, H. Forrest, A. W. Mason, S. Richardson, J. Turner, J. S. Wilkinson, J. Wilkinson. The District Councillor for the Bingham Division is Mr. J. Turner.

EXTRACTS FROM PARISH REGISTERS.

MARRIAGES.

Feb. 28 (At Bleasby) Foster Thornton and Beatrice Ida Riley.
Mar. 9 (At Hillmorton) Arthur Ellis and Annie Taylor.
,, 29 Samuel Miller and Ethel Mary Dent.



EAST BRIDGFORD MAGAZINE.



St. Peter's Church, East Bridgford.

Services.

HOLY COMMUNION:—

On all SUNDAYS (except 1st in Month) and HOLY DAYS at 8 a.m. and after Morning Prayer on the First Sunday in the Month.

MORNING AND EVENING PRAYER:—

Sundays at 10.45, and 6.30 p.m.

Weekdays at 8 a.m. (Wednesday and Friday at 10), and 6.30 p.m. daily.

HOLY BAPTISM:—

First Sunday in month at 3, or at other Services on due notice.

CHURCHING OF WOMEN:—

Wednesday and Friday at 10, or before any Service on due notice.

SUNDAY SCHOOL:—

At 10 a.m. in the National School.

Children's Service and Catechizing in Church at 2.30.

This month brings in its course three great festivals of our Christian Church, which it is our duty to observe with all reverence. They bring before us great truths of our Christian Creed—the Ascension or triumphant entrance within the veil of our Lord Jesus Christ, to begin his continual pleading for us before the throne; the gift of the Holy Ghost at Pentecost or Whit Sunday, the birthday of the Church; and the wonderful mystery of the Being of God, set before us on Trinity Sunday. This brings to an end the Festival half of the Church's year. The twenty-six Sundays after Trinity, which occupy the next six months have their weekly teaching on the carrying out of the lessons learnt in the earlier part of the year, in the Christian life, in grace, in faith, in duty. This progressive teaching will be found of the greatest value by those who follow its course regularly, in their attendance at Church, and by letting it help them in their daily lives.

On *Ascension Day*, May 5th, the Holy Communion will be celebrated at 8 o'clock. Morning Prayer at 11 and evening at 8 p.m.

On *Whit-Sunday*, May 15th, the Holy Communion will be celebrated at 7, and 8 o'clock and at Mid-day.

On *Trinity Sunday*, May 22nd, the Holy Communion will be celebrated at 8 o'clock.

The Bishop of the Diocese has issued the following Pastoral letter, which was read in all Churches on Sunday, April 24th, in preparation for the "Diocesan Sunday" Collections on May 1st. :—

SOUTHWELL, April, 1910.

DEAR BRETHREN IN THE LORD.

I have been requested by the Church Extension Councils to set apart annually the 5th Sunday after Easter—Rogation Sunday—as the day on which your prayers and alms are asked on behalf of the extension of Christ's Kingdom in the Diocese of Southwell. How fitting is such a request is best known to you who bear in mind the closing words of our Lord to His disciples ere He departed from the earth. Soon will the Church be keeping the great Festival of the Ascension of our Lord, and we shall be gathering in our Churches to praise Him as the victorious King of Kings. But that victory can only shine in full lustre when the Church is carrying the victorious banner into all parts of the earth. Our praises will be loudest where the light is strong and where we have tasted of the joy of triumph in Christ.

The Church, therefore, can never rest nor be satisfied until the darkness of ignorance and of wilful sin is dispelled. Brethren, that is not yet, therefore "let us not be weary in well doing."

Hearken now to two of the Lord's last words, spoken directly to His disciples who heard Him, but spoken for all time to His disciples amongst whom we count ourselves.

(a) "Verily, verily, I say unto you, whatsoever ye shall ask the Father in My name, He will give it you."

"Herein lies the pledge of God's willingness to answer our prayers.

(b) On the very eve of His Ascension He speaks thus :—"Ye shall be witnesses unto Me—unto the uttermost part of the earth"

Herein we find the definite call of Christ to His Church to be a witness unto Him. Thus in prayer and work we disciples are bound and pledged. Woe be to us if we fail in this our duty to Him who is Head of the Church.

That this appeal will not be in vain I know, for in many places I am encouraged by the wonderful evidence of sacrifice upon the part of our wage-earning members. According to their means, and oftentimes beyond their means, they strive for the building of a new Church or Mission Room, or for the support of their Clergy. But this evidence only proves what yet is possible when the many, and not the few, rise to a true conception of the work which lies before us, and of the joy which accompanies its performance.

Our task in this Diocese is great. The two Counties of Derbyshire and Nottinghamshire contain the vast Midland Coalfields. Year by year there is new development. Country villages change suddenly into Colliery villages, where Churches or Mission Rooms are needed. In such parishes oftentimes the staff of Clergy is wholly inadequate, and the mass of people, unknown and unshepherded, are tempted to drift into the ranks of the indifferent or the hostile, save where other religious bodies assert their influence.

Brethren, my longing is to possess the power to encourage those who are labouring in such districts, or in the little villages where there are few to help, to strengthen their help, to strengthen their hands, to help them adequately, and to help them in time. And this I can do if every baptized member of the Church of Christ shares with me, according to his power, this responsibility.

That such a holy purpose should possess the minds of our people, and that the spirit of unity in carrying out this purpose may inspire the whole Church, is my constant and earnest prayer.

Yours ever in Christ,

EDWYN SOUTHWELL.

An Industrial Exhibition of work done by members of the G.F.S. was held in the Mechanics Hall, Nottingham, on Saturday, April 16th, and was attended by a large number from all parts of the Diocese. Of our own members, a prize for painting was won by Miss Fox, and Miss N. Ulyett was highly commended for fancy work.

The East Bridgford Choral Society gave their Concert in the Temperance Hall on Tuesday, April 12th. The work they had been diligently practising through the winter was Mendelssohn's Oratorio "St. Paul," which formed the first part of the Concert. It is a real gain to the members study music of this kind, and the successful performance must have given satisfaction to them and their indefatigable conductor, Rev. J. Standish. The chorus of about 50 voices was strengthened by an orchestra, consisting of Messrs. Whitehead and Hill and Miss Burgess (1st violins), Mr. Blount and Miss Powell (2nd violins), Miss Burgess (viola), Mrs. Cartwright (cello), Mr. J. Spencer (double bass), Mr. C. Doncaster (organ), Mrs. Wilkinson (piano). The society was fortunate in the principals, Miss Creasy, Miss K. Martin, Mr. E. S. Dunkerton and Mr. E. Raspin, and the oratorio was given with precision and vigour that were a great credit to the performers. The second part of the concert opened with an instrumental trio by Ed. Shutt; and each of the principal vocalists gave songs, which were extremely appreciated by the audience. The programme of the second part was as follows :—Trio "Andante and Scherzo" (Ed. Shutt) Mrs. Cartwright, Miss Powell and Miss Sharp; song "Questions" (Squire) Miss Creasy; song "Douglas Gordon" (Keller) Mr. E. S. Dunkerton; song, Miss Martin; song "Mountain Lovers" (W. H. Squire) Mr. E. Raspin, song "The birds go north again" (Willeby) Miss Creasy; song "Kerry Dance" (Molloy), Mr. Dunkerton; song (a) "In your dear eyes" (Trottere) (b) "Because" (Hardelöt), Mr. Raspin.

During the evening a presentation was made to Mrs. J. Wilkinson of a music cabinet, to mark the appreciation of her services as accompanist, which has long been felt by all the members of the society.

A general meeting of the Society was held in the Schoolroom, April 26th, when the accounts were presented by the Treasurer, showing a deficiency of £4 9s. 11d. This is due to the session being so prolonged, the low rate of subscription and a loss of £1 10s. on the Concert. A levy was proposed of 1/- as the minimum on all the members with a view to wiping off the debt. A vote of thanks was accorded to the Rev. J. Standish, the Conductor, for his valuable help, and also to Miss Fox, Mr. Sharp, and others who had helped with the Concert. The Balance Sheet is appended :

RECEIPTS.	£	s.	d.	EXPENSRS.	£	s.	d.
Balance from last year.....	2	0	8	Rent of Hall.....	3	0	0
Subscriptions.....	3	13	6	„ „ School.....	0	7	6
Contribution for Conveyance.....	1	0	0	Conveyance.....	5	13	6
Due to Treasurer.....	4	9	11	Contributions towards Music.....	0	13	0
				Loss on Concert.....	1	10	1
	£11	4	1		£11	4	1

HENRY GOLDSTON, Hon. Treasurer.

THE TRAINING COLLEGE, DERBY.—The Fourth Annual Training Week for Sunday School Teachers will begin on Monday, July 11th, at 3 p.m., and will close on Saturday, July 16th, at 1 p.m. Women Teachers can have board and lodgings in the College if they apply in time.

FEES.—For Classes (Morning and Evening) 2/-; for Classes (Evening only), 1/-; for Board, Lodging and Classes, 10/6.

DONATIONS.—As the fees are very low, donations towards expenses are asked for, otherwise a loss will be entailed on the College Committee.

APPLICATIONS.—Applications should be made before the end of June to the Principal. Letters should be marked on the outside, "S.S. Teachers."

The Rector will be away from home for the two first Sundays in June. There will therefore be no Men's Service held on the first Sunday in June.

Parents of Children are invited to attend the Catechism Festival at 2.30 on the afternoon of Sunday, May 29th.

EXTRACT FROM PARISH REGISTERS.
MARRIAGE.

March 29th Samuel Miller and Ethel Mary Dent.

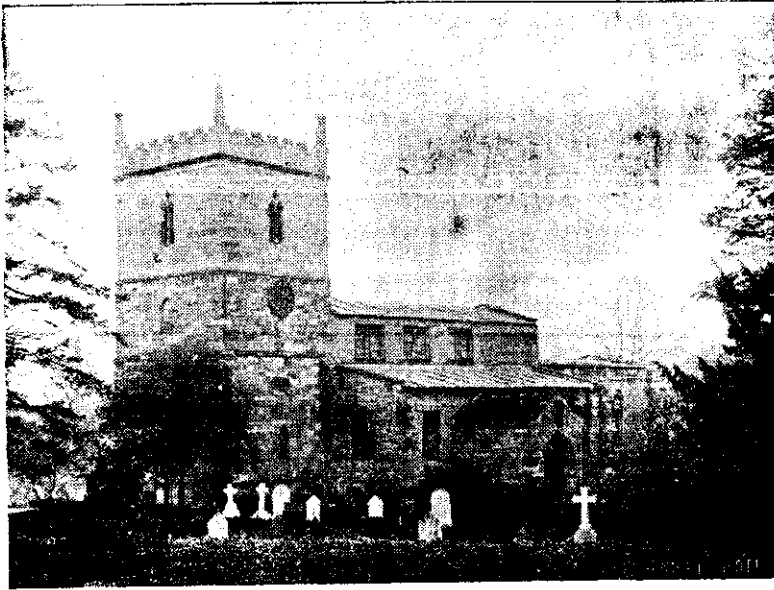
Time Table for East Bridgford of Trains to and from Nottingham, for May, 1910:—

Leave		Arrive Nottingham		Leave Nottingham.		Arrive	
Bingham.	Lowdham.	G.N.R.	M.R.	G.N.R.	M.R.	Bingham.	Lowdham
—	7.0	—	7.22	5.25	—	5.48	—
7.30	—	7.54	—	—	6.0	—	6.19
—	7.49	—	8.10	7.15	—	7.38	—
8.20	—	8.45	—	—	7.20	—	7.39
—	8.25	—	8.45	*8.10	—	8.34	—
—	9.10	—	9.30	—	8.35	—	8.54
* 9.43	—	10.6	—	9.25	—	9.48	—
9.51	—	10.13	—	*10.24	—	10.47	—
—	10.1	—	10.24	—	11.15	<i>Wednesdays</i>	
10.49	<i>Saturdays</i>	11.10	—	—	11.25	—	11.46
—	11.19	—	11.42	11.50	—	12.13	—
11.54	—	12.18	—	—	12.45 <i>except Sat.</i>	—	1.3
—	1.35 <i>except Sat.</i>	—	1.55	—	1.5	—	1.24
* 1.40	—	2.4	—	* 1.50	—	2.13	—
2.1	—	2.25	—	—	2.0	—	2.18
—	2.4	—	2.24	—	2.30	—	2.49
—	2.25	—	2.44	2.8	—	2.26	—
—	3.25 <i>Fridays</i>	—	3.40	2.43	—	3.6	—
* 3.32	—	3.56	—	4.5 <i>Saturdays</i>	—	4.27	—
—	4.22	—	4.40	—	4.38	—	4.52
4.54	—	5.18	—	* 5.0	—	5.23	—
—	4.43	—	5.3	—	6.10	—	6.20
5.2	<i>Saturdays</i>	5.25	—	6.15	—	6.38	—
—	6.36	—	6.55	—	6.40	—	6.59
6.44	—	7.8	—	—	7.45	—	8.4
—	7.49	—	8.10	7.40	—	8.6	—
* 8.48	—	9.12	—	8.47	—	9.13	—
9.10	—	9.34	—	—	9.20	—	9.39
—	9.42	<i>Saturday</i>	10.2	9.55	—	10.19	—
—	9.55 <i>except Saturday</i>	—	10.15	—	10.40 <i>except Thur. & Sat.</i>	—	10.58
—	10.15 <i>Saturday</i>	—	10.35	—	11.22 <i>Thur. & Sat.</i>	—	11.43
—	—	—	—	11.0	<i>Wed. and Sat.</i>	11.24	—
—	11.12 <i>except Thurs. & Sats.</i>	11.30	—	—	—	—	—
SUNDAYS.							
—	12.41	—	1.0	—	10.7	—	10.26
3.3	—	3.27	—	11.40	—	12.4	—
4.55	—	5.18	—	2.10	—	2.33	—
—	6.48	—	7.10	6.13	—	6.36	—
8.35	—	9.0	—	—	8.10	—	8.29
—	—	—	—	9.57	—	10.20	—

*Newark trains.

N.B.—All the G.N.R. trains stop at London Road (High Level Station) as well as at the Victoria Station.

EAST BRIDGFORD MAGAZINE.



St. Peter's Church, East Bridgford.

Services.

HOLY COMMUNION:—

On all SUNDAYS (except 1st in Month) and HOLY DAYS at 8 a.m.
and after Morning Prayer on the First Sunday in the Month.

MORNING AND EVENING PRAYER:—

Sundays at 10.45, and 6.30 p.m.

Weekdays at 8 a.m. (Wednesday and Friday at 10), and 6.30 p.m. daily.

HOLY BAPTISM:—

First Sunday in month at 3, or at other Services on due notice.

CHURCHING OF WOMEN:—

Wednesday and Friday at 10, or before any Service on due notice.

SUNDAY SCHOOL:—

At 10 a.m. in the National School.

Children's Service and Catechizing in Church at 2.30.

The sad news of the death of our King Edward VII, which took place a little before midnight on Friday, May 6th, came upon us with a painful shock, the more so that the news of his illness was only published on the Thursday.

The loss to the country is truly a personal one, and is universally felt to be so. King Edward VII enjoyed the affection of his people quite apart from, and in addition to, the universal loyalty which was his due as head of the State. He spent himself to the last in the service of his country, and his services to the peace of the world have justly earned for him the title of Edward the Peacemaker.

Friday, the 20th of May, the day of the King's Funeral at St. George's Chapel, Windsor, was solemnly observed by a special service at 1 p.m., in our Church, which was suitably draped in black. The "Dead March" was played at the commencement, and a muffled peal rung at the close. At the same hour throughout the kingdom, mourning subjects were using the same special form of service, in commemoration of His late Majesty King Edward VII, of blessed and glorious memory.

We tender our Loyal homage to His Majesty, GEORGE the Fifth, who was proclaimed King on Monday, May 9th, 1910.

Whitsuntide was saddened by the nation's loss, but King George V. expressly desired that the people's holiday should be kept.

The Oddfellows' annual service was held in Church, followed by a dinner at the Royal Oak. The Lodge maintains its numbers, the registered membership being 97; but it is sad to see so few attending the service in Church and the dinner; it is really an important thing for the Club to keep up the good old principle of giving thanks to God and asking His blessing at the annual service, and to maintain the sense of unity and fellowship by which the Club stands.

The Band of Hope has postponed its procession and concert until the next Bank Holiday, August 1st.

On Diocesan Sunday, May 1st, the collections for the Diocesan Church Extension Society amounted to £7 10s. On Ascension Day, the collection for the Diocesan Missionary Studentship was £1 2s. 5d.; and the Whitsunday offerings for the Church Restoration Fund were £3 1s.

The Southwell Diocesan Missionary Festival takes place at Newark on June 2nd. Conference at 11 a.m. Service in the Parish Church, 3.30 p.m. Public Meeting in the Town Hall, 7.30 p.m. Railway tickets at a fare and a quarter.

At a meeting of the Church Council, held on April 25th, it was agreed that the custom of the Church singers and ringers going round for the collection of Christmas boxes, was one which might very well be superseded. It was considered only right that those who gave time and trouble to these parts of Church work should have the customary recognition of their services, but it was thought that all would feel it a more dignified and self-respecting way that such payment should be made by the Churchwardens from special funds. The Church Council therefore unanimously agreed that the collections

in Church on Feast Sunday, June 26th, should be for a fund for Choir and Ringers, in lieu of Christmas boxes as at present collected. They hope that all who are accustomed to give, will do so through the Church collection, and will contribute now, at least as much as they have been accustomed to do in the old way, to both the Choir and the Ringers. It is not proposed this year to include the summer excursion of the Choir in this fund, to which we hope their friends will be willing to give as usual when asked.

CHURCH OF ENGLAND MEN'S SOCIETY.—After full deliberation, for some months past, it was determined at a meeting held in the School on May 9th to form a Branch at East Bridgford, of this Society, which has so wonderfully spread among Churchmen, not only in English parishes, but in the Army, in India, and in the Colonies. The aim of the Society is to unite bodies of men in the parishes of the English Church, who are willing to do their best to serve God and their fellows in the Church. The simple rule of the society is, Work and Pray:—"to pray to God daily and to do something to help forward the work of the Church." It involves no other obligation which is not already demanded of every Christian man.

The Rector will be pleased to give further information or to hear from others who have not had an opportunity of attending the meeting.

Those whose names are already enrolled will be admitted at the next Men's service, which will be held at 3 p.m. on the first Sunday in next month, July 3rd.

A Meeting of Subscribers to the East Bridgford School will be held on Tuesday, June 21st, in the School-room, at 6 p.m., to elect two Foundation Managers to serve for the three years next ensuing from June 30th, 1910.

A Union Jack with Flag-pole has been kindly presented to the School by Miss Fox, and was saluted by the children on Empire Day, May 24th.

Sunday, June 26th, the 5th Sunday after Trinity, is our Feast Sunday. The celebration of the Holy Communion will be at 8 a.m. Let us not forget the first meaning of this holiday season, namely, that it is a united act by the whole parish, of thanksgiving to Almighty God for His past mercies. St. Peter's Day is Wednesday, June 29th.

The forty-seventh Exhibition of the East Bridgford Horticultural Society will take place on Tuesday, June 28th. The Show is open from 2 to 9 p.m. Admission before 6 p.m., 6d., after 6 p.m. 3d. The Bingham Band is engaged, and will give an open air Concert during the afternoon, and dance music in the evening. Full particulars are published in the Schedule, which can be obtained of Mr. H. Goldston, the Hon. Secretary.

CRICKET CLUB.—The following matches have been played: May 16th, Flintham 28, East Bridgford 50; May 21st, Caythorpe 55, East Bridgford 43. The fixtures to follow are—

May 28th.	Bingham.	
June 6th.	Nelsons, Ltd. (Home).	
" 11th.	Radcliffe-on-Trent. (Home).	
" 18th.	Radcliffe-on-Trent.	
" 27th.	Flintham. (Home).	} Feast Week.
" 28th.	Shelford. (Home).	
" 30th.	Notts Unity. (Home)	

EXTRACTS FROM PARISH REGISTERS.

BAPTISM.

Whit-Sunday, May 15th. Philip, son of Charles and Sarah Hannah Smith.

MARRIAGES.

May 7th (at Lowdham). Arthur Euerby and Maria Foster
 „ 19th. George Dickinson and Edith Harriett Pacey.

BURIAL.

May 11th. George Manchester, aged 45 years.

Time Table for East Bridgford of Trains to and from Nottingham, for June, 1910:—

Leave		Arrive Nottingham		Leave Nottingham.		Arrive	Arrive
Bingham.	Lowdham.	G.N.R.	M.R.	G.N.R.	M.R.	Bingham.	Lowdham
		Victoria.		Victoria.			
—	7.0	—	7.22	5.25	—	5.48	—
7.30	—	7.54	—	—	6.0	—	6.19
—	7.49	—	8.10	7.15	—	7.38	—
8.20	—	8.45	—	—	7.20	—	7.39
—	8.25	—	8.45	*8.10	—	8.34	—
—	9.10	—	9.30	—	8.35	—	8.54
* 9.43	—	10.6	—	9.25	—	9.48	—
9.51	—	10.13	—	*10.24	—	10.47	—
—	10.1	—	10.24	—	11.15	<i>Wednesdays</i>	
10.49	<i>Saturdays</i>	11.10	—	—	11.25	—	11.46
—	11.19	—	11.42	11.50	—	12.13	—
11.54	—	12.18	—	—	12.45 <i>except Sat.</i>	—	1.3
—	1.35 <i>except Sat.</i>	—	1.55	—	1.5	—	1.24
* 1.40	—	2.4	—	* 1.50	—	2.13	—
2.1	—	2.25	—	—	2.0	—	2.18
—	2.4	—	2.24	—	2.30	—	2.49
—	2.25	—	2.44	2.8	—	2.26	—
—	3.25 <i>Fridays</i>	—	3.40	2.43	—	3.6	—
* 3.32	—	3.56	—	4.5 <i>Saturdays</i>	—	4.27	—
—	4.22	—	4.40	—	4.38	—	4.52
4.54	—	5.18	—	* 5.0	—	5.23	—
—	4.43	—	5.3	—	6.10	—	6.29
5.2	<i>Saturdays</i>	5.25	—	6.15	—	6.38	—
—	6.36	—	6.55	—	6.40	—	6.59
6.44	—	7.8	—	—	7.45	—	8.4
—	7.49	—	8.10	7.40	—	8.6	—
* 8.48	—	9.12	—	8.47	—	9.13	—
9.10	—	9.34	—	—	9.20	—	9.39
—	9.42	<i>Saturday</i>	10.2	9.55	—	10.19	—
—	9.55 <i>except Saturday</i>	—	10.15	—	10.40 <i>except Thur. & Sat</i>	—	10.58
—	10.15 <i>Saturday</i>	—	10.35	—	11.22 <i>Thur. & Sat.</i>	—	11.43
—	11.12 <i>except Thurs. & Sats.</i>	11.30	—	11.0	<i>Wed. and Sat.</i>	11.24	—
SUNDAYS.							
—	12.41	—	1.0	—	10.7	—	10.26
3.3	—	3.27	—	11.40	—	12.4	—
4.55	—	5.18	—	2.10	—	2.33	—
—	6.48	—	7.10	6.13	—	6.36	—
8.35	—	9.0	—	—	8.10	—	8.29
—	—	—	—	9.57	—	10.20	—

*Newark trains.

N.B.—All the G.N.R. trains stop at London Road (High Level Station) as well as at the Victoria Station.

EAST BRIDGFORD MAGAZINE.



St. Peter's Church, East Bridgford.

Services.

HOLY COMMUNION:—

On all SUNDAYS (except 1st in Month) and HOLY DAYS at 8 a.m.
and after Morning Prayer on the First Sunday in the Month.

MORNING AND EVENING PRAYER:—

Sundays at 10.45, and 6.30 p.m.

Weekdays at 8 a.m. (Wednesday and Friday at 10), and 6.30 p.m. daily.

HOLY BAPTISM:—

First Sunday in month at 3, or at other Services on due notice.

CHURCHING OF WOMEN:—

Wednesday and Friday at 10, or before any Service on due notice.

SUNDAY SCHOOL:—

At 10 a.m. in the National School.

Children's Service and Catechizing in Church at 2.30.

Dear Friends,

On June 5th, I had the long-looked-for opportunity of attending the "Passion Play," performed every ten years with the utmost reverence by the inhabitants of Ober Ammergau, a charming village in a remote valley of Bavaria, in fulfilment of a solemn vow made nearly 300 years ago.

The drama occupies eight hours of intense interest and consists of eighteen scenes, beginning with Christ's entry into Jerusalem (S. Matt. xvi) to the end of the Gospel story. A series of 24 *Tableaux vivants* from Old Testament history, emblematic of the story, alternate with the acted scenes; and a chorus explains the whole drama with an accompanying commentary, in a series of very beautiful musical pieces. It is represented on an open-air stage, by over 500 performers.

I have already taken the opportunity, on the first Sunday after my return, to give you my own impressions of it; and I can only wish that you might all be able to come under the inspiring influence of this wonderful work. I give now an account of its lessons, communicated to me by an eye-witness.

A. D. HILL.

"Before seeing this wonderful representation of the Passion of our Lord Jesus Christ, I was conscious of dread lest a painful shock should result from any attempt to personate our Divine Master. Now I am sincerely thankful that I put this feeling aside, and went to Ober Ammergau.

What have I gained? First, an unexpected insight into the Gospel story. One reaps in this presentment of the Lord's Passion, the result of hundreds of years of devout meditation upon it. All its minor incidents, as well as its principal events, are marshalled before the eyes in their true historic order and proportion, each event being made to show up against another, as no written commentary could do, with the result that one realizes, perhaps for the first time, the wisdom of God in ordaining this Sacrifice of His Son. One gains some further vision into S. Paul's meaning when he writes, "Christ crucified, unto the Jews a stumbling block, and unto the Greeks foolishness; but unto them which are called, Christ the power of God, and the wisdom of God." This play not being the work of a single author, but enshrining the best efforts of good men through many years, the old prophecy is fulfilled in it, that the thoughts of many hearts are revealed. It originated as an act of thanksgiving to Almighty God in a day when bibles and books of all sorts were scarce, and when the stage was an important means of instruction, and was used, moreover, only to elevate and never to degrade the mind of man.

This is the great gain to the intellect and mind. What more did I gain? There was far more precious gain to the heart. It is here that the dramatic gift of these simple village folk receives its highest consecration. One comes away feeling that nothing else could have so inspired the imagination with the reality of the Lord's intense patience and courageous fortitude; and above all and through all, the reality of His Love, with its over-mastering, never-flagging purpose, to do His Father's will and to finish His work.

Set over against this stands the terrible impression left on the mind, by the remorse of Judas: it is almost too powerful. On the other hand there is the touching penitence of S. Peter. One sees the little group of servants, idly jesting while they wait. Peter, pale and apprehensive, within reach of their taunts, denies his Master with increasing vehemence. Then suddenly and unexpectedly the Lord passes through the court in charge of the guard; for one moment His head turns, and S. Peter receives that look, that made the turning point in his life; utterly broken down he turns away, cowering in an agony of repentance and shame.

A very remarkable feature in the Play is the impression it makes on the audience. To be one of 4,000 people, all hushed and thrilled and still, is no insignificant experience. Each week, from May to September, the performance is witnessed by 4,000 people, and sometimes it is repeated within the week to another 4,000 spectators. These people gather from far and near, to go out and carry the message of the Love of God to thousands more.

Thanks be to God for that Love, which has worked so powerfully in the hearts of these simple villagers, and made them wise and steadfast, to begin and maintain so great a work for His glory and honour." G.F.H.

In accordance with the Education Act, the following have been appointed as Managers of East Bridgford Schools, for the three years ending June 30th, 1913.—The Rector, (Ex-officio), Mr. J. Wilkinson, nominated by the Rector, Rev. E. P. Weatherell and Mr. W. H. Hodges, elected by subscribers, Miss Fox, appointed by the Notts Education Committee, Mr. J. S. Wilkinson, appointed by the Parish Council.

The Rev. W. H. Bartholomew will be in charge and will reside at the Rectory, for the three Sundays, after July 22nd.

CRICKET CLUB.—The fixtures for July are; 2nd, Shipstone's Brewery; 9th, Lowdham P.S.E.; 16th, Notts Asylum; 30th, Orston.

EXTRACTS FROM PARISH REGISTERS.

BAPTISMS.

- May 20th. Charles Edward, son of George and Sarah Jane Ellis.
" 31st. Margaret Alice, daughter of Sydney John and Jane Elizabeth Taylor.
June 6th. Nancy Viola Lee, daughter of Turner and Edith Lee.
" 29th. Charles Leslie, son of Charles William and Lilian Emma Peat.

MARRIAGE.

- June 13th. William Gilbert Padgett and Sarah Jane Arnold.

BURIAL.

- June 3rd. John Marriott, aged 74 years.

The East Bridgford Horticultural Society held its forty-seventh annual Show on Feast Tuesday, in a field kindly lent by Mr. Turner. The Show was generally admitted to be one of the Society's best, and the day being fine, it was well patronized, the gate being slightly in excess of last year's.

The Bingham Brass Band, conductor, Mr. F. Taylor, played selections in the afternoon, and for dancing in the evening.

Appended is the list of prize winners:—

CLASS A.—(Gentlemen, Professional Gardeners and Farmers.)

- Roses—1, Dr. Duff; 2, Miss Fox.
- Geranium, for bloom—1, Rev. A. D. Hill; 2, Miss Fox.
- Geranium, for foliage—1 and 2, Rev. A. D. Hill.
- Pelargonium—1 and 2, Miss Fox.
- Fuchsia—1 and 2, Miss Fox.
- Calceolaria, Herbaceous—1 and 2, Rev. A. D. Hill.
- Calceolaria, Shrubby—1 and 2, Miss Fox.
- Potunia—1, Rev. A. D. Hill; 2, Mr. J. W. Woodsend.
- Plants, Greenhouse—1 and 2, Miss Fox.
- Sweet Williams—1, Rev. A. D. Hill; 2, Miss Fox.
- Bouquet of Garden Flowers—1 and 2, Miss Fox.
- Pansies—1 and 2, Miss Fox.
- Sweet Peas—1, Mr. Woodsend; 2, Rev. A. D. Hill.
- Carrots—1, Rev. A. D. Hill; 2, Dr. Duff.
- Cauliflowers—1, Rev. A. D. Hill; 2, Miss Fox.
- Cucumbers—1 and 2, Rev. A. D. Hill.
- Broad Beans—1, Mr. Hodges; 2, Rev. A. D. Hill.
- Onions, Spring sown—1, Rev. A. D. Hill; 2, Mr. Woodsend.
- Onions, Autumn sown—1, Rev. A. D. Hill; 2, Mr. Woodsend.
- Lettuces—1, Dr. Duff; 2, Rev. A. D. Hill.
- Peas—1 and 2, Rev. A. D. Hill.
- Potatoes, Round—1, Rev. E. P. Weatherell; 2, Mr. Hodges.
- Potatoes, Kidney—1, Mr. Hodges; 2, Miss Fox.
- Turnips—1, Mr. Woodsend; 2, Miss Fox.
- Apples, last year's—1 and 2, Mr. Hodges.
- Apples, this year's—1 and 2, Mr. S. Richardson.
- Gooseberries—1 and 2, Mr. Woodsend.
- Currants, White—1 and 2, Mr. Woodsend.
- Currants, Red—1 and 2, Rev. A. D. Hill.
- Currants, Black—1, Miss Fox; 2, Mr. Woodsend.
- Raspberries—1, Rev. A. D. Hill; 2, Mr. Hodges.
- Strawberries—1 and 2, Miss Fox.
- Cherries—1 and 2, Rev. A. D. Hill.
- Best Tray of Vegetables—1, Miss Fox; 2, Rev. A. D. Hill.

CLASS B.—(Tradesmen and Cottagers.)

- Roses—1 and 2, Mr. W. Millington.
- Geranium, for bloom—1 and 2, Mr. J. Green.
- Geranium, for foliage—1, J. Green; 2, W. Millington.
- Pelargonium—1 and 2, W. Millington.
- Fuchsia—1 and 2, W. Millington.
- Calceolaria, Shrubby—1, Mr. W. Swingle.
- Potunia—1, W. Millington.
- Window Plants—1, W. Millington; 2, Mrs. G. Huskinson.
- Plants, Greenhouse—1, W. Millington; 2, J. Green.
- Sweet Williams—1, Mr. E. Coville; 2, W. Millington.
- Bouquet—1, Mr. Coville; 2, J. Green.
- Pansies—1 and 2, W. Millington.
- Sweet Peas—1, J. Green; 2, E. Sears.
- Carrots—1, W. Swingle; 2, W. Millington.
- Lettuces—1, W. Swingle; 2, J. Green.
- Peas—1, E. Sears; 2, W. Millington.
- Potatoes, Kidney—1 and 2, W. Millington.
- Turnips—1 and 2, W. Millington.
- Apples, last year's—1 and 2, W. Swingle.
- Apples, this year's—1, W. Swingle; 2, T. Alvey.

- Currants, White—1 and 2, Mr. T. Alvey.
- " Red—1 and 2, T. Alvey.
- " Black—1 and 2, Mr. A. Shipman.
- Raspberries—1, E. Coville; 2, T. Alvey.
- Strawberries—1 and 2, W. Swingle.
- Cherries—1 and 2, W. Swingle.
- Best Tray of Vegetables—1, W. Millington; 2, J. Green.

CLASS C.—(Labourers.)

- Roses—1, Mr. F. O. Green.
- Geranium for Bloom—1 and 2, F. O. Green.
- " Foliage—1 and 2, F. O. Green.
- Pelargonium—1 and 2, F. O. Green.
- Fuchsia—1 and 2, F. O. Green.
- One Pot of Musk—1 and 2, F. O. Green.
- Potunia—1 and 2, F. O. Green.
- Window Plants—1 and 2, F. O. Green.
- Sweet Williams—1, F. O. Green; 2, Mr. J. Higgs.
- Collection of Cut Flowers—1 and 2, F. O. Green.
- Pansies—1, F. O. Green; 2, J. Higgs.
- Sweet Peas—1 and 2, F. O. Green.
- Carrots—1 and 2, F. O. Green.
- Cauliflower—1 and 2, F. O. Green.
- Cabbages—1 and 2, F. O. Green.
- Rhubarb—1, Mr. W. Clayton.
- Broad Beans—1 and 2, F. O. Green.
- Onions Spring sown—1 and 2, F. O. Green.
- " Autumn sown—1 and 2, F. O. Green.
- Lettuces—1 and 2, F. O. Green.
- Eschalots—1 and 2, F. O. Green.
- Peas—1 and 2, F. O. Green.
- Potatoes round—1, F. O. Green.
- " kidney—1 and 2, F. O. Green.
- Turnips—1 and 2, J. Stanley.
- Apples, last year's—1 and 2, F. O. Green.
- " this year's—1, Mrs. Thornton; 2, J. Higgs.
- Gooseberries—1, J. Stanley; 2, J. Higgs.
- Raspberries—1 and 2, J. Stanley.
- Strawberries—1 and 2, J. Stanley.
- Currants, white—1, J. Stanley; 2, F. O. Green.
- " red—1 and 2, J. Stanley.
- " black—1, J. Watson; 2, J. Stanley.
- Bouquet of Wild Flowers—1, Edna Clegg; 2, Robert Children's Prizes. Gower; 3, Evelyn Bateman.
- Best Tray of Vegetables—1, F. O. Green.

SPECIAL PRIZES.

- Doncaster and Son, Bingham—1, Millington; 2, Rev. A. D. Hill.
- Mills, Bros., Newark—1, F. O. Green.
- Mr. Wadsworth, Newton—F. O. Green.
- Mr. A. W. Mason, Allotment prize—Mr. W. Lander and Mr. C. Bateman, (equal).
- Eggs—1, Rev. Hill; 2, Mrs. G. Huskinson.
- Butter—1 and 2, Miss Millington.
- Table Decorations—Miss Rhodes.
- Garden Design—1 and 2, Mr. D. Gower; Mr. A. Shipman, highly commended.
- Premier Prize for round potatoes—Rev. E. P. Weatherell.
- Premier Prize for kidney potatoes—W. Millington.

EAST BRIDGFORD MAGAZINE.



St. Peter's Church, East Bridgford.

Services.

HOLY COMMUNION :—

On all SUNDAYS (except 1st in Month) and HOLY DAYS at 8 a.m. and after Morning Prayer on the First Sunday in the Month.

MORNING AND EVENING PRAYER :—

Sundays at 10.45, and 6.30 p.m.

Weekdays at 8 a.m. (Wednesday and Friday at 10), and 6.30 p.m. daily.

HOLY BAPTISM :—

First Sunday in month at 3, or at other Services on due notice.

CHURCHING OF WOMEN :—

Wednesday and Friday at 10, or before any Service on due notice.

SUNDAY SCHOOL :—

At 10 a.m. in the National School.

Children's Service and Catechizing in Church at 2.30.

We are very glad to record that a Branch of the Church of England Men's Society has now been formed at East Bridgford. At the Men's Service on Sunday, July 3rd, an interesting service of admission of new members took place, and our Branch now consists of twenty one members.

This Society, which has spread over England and beyond, and is already well organised in Nottinghamshire, represents no new principles, no new plan to set everything right. It aims simply at uniting Churchmen together in a brotherhood of zeal for the kingdom of God. Its simple rule is to pray to God daily, and to do something—however small—to help forward the work of the Church. It is a Layman's movement, and it is an appeal from Men to Men. Due notice will be given to members, of the first meeting, which will be held after Harvest. Meanwhile any who may wish to know about the society, or who desire to join, are invited to apply to the Rector, who is President of the Branch, or to Mr. W. A. Hodges, who has undertaken to act as Secretary until the first meeting, when officers will be elected.

The Collections on Feast Sunday, June 24th, for the Choir and Ringers' Fund, amounted to £6 6s. 3d., and with 2/6 received since, to a total sum of £6 8s. 9d.

Seven new Lamps have been hung in the Church, in readiness for the dark evenings that will come soon. They look very nice and artistic; and we think everyone will be struck with the improved appearance of the Church now that the old standards, which have served us well in their time, have been removed.

CRICKET CLUB.—The following are the matches that have been played.—

May 28.	Bingham II, (won, 56 27)
June 6.	Nelson's Ltd, (lost, 45, 47 for 5 wickets)
„ 11.	Radcliffe-on-Trent II, (tie, 42, 42)
„ 18.	Radcliffe-on-Trent II, (lost, 82, 93)
„ 27.	Flintham, (won, 134, 75)
„ 28.	Shelford, (unfinished, 97, 78 for 6 wkts.)
July 2.	Shipstone's Brewery, (unfinished, 48 for 3 wkts. 66 for 6 wkts)
„ 9.	Lowdham, (lost, 29, 86 for 4 wkts.)

The Church Sunday School, Catechism, and Bible class were entertained at the Hall by Miss Cartwright and Miss Fox, on Saturday, July 16th. The afternoon was fine, and games and races, including a Marathon race round the grounds won by A. E. Manchester, were much enjoyed by the party.

A very successful Tennis Tournament was held on Saturday, June 25th, in aid of the East Bridgford and District Nurse Fund, Mr. W. A. Woodsend kindly undertaking the office of Secretary. Seven courts were in use, and the finals were played on the Tennis court at The Hall. The winners were, 1st prize, Mr. W. A. Woodsend and Miss Hancock; 2nd prize, Mr. V. Peat and Mrs. Fowkes. The proceeds amounted to £9 3s.

Boys' CRICKET CLUB.—This club, under the captaincy of T. Wilkinson, has been showing plenty of energy. The matches played were against Lowdham (won), Screveton (lost, 19, 24); Screveton (won, 59, 24); Stathern (won, 76, 52); Flintham, (won, 55 for 3 wkts., 18); Flintham, (lost, 14 and 48, 35 and 39).

The school will close for the Harvest holidays on August 5th, and re-open on Monday, September 5th.

We congratulate Miss Annie Allwood, on having gained admission to the Derby Training College.

G. F. S.—The invitation kindly given by our Scarrington friends, to hold the Annual Branch Festival there, was accepted, and on Thursday, July 14th, in perfect weather, nearly 100 associates, members and friends, of the Bingham Branch joined together in the service at Scarrington Church, at which 11 new members were admitted. An address was given by the Rev. T. W. Swann, Vicar of Orston; the collection for the Sick Fund amounted to £1 11s. It was an additional pleasure to have the members of the Mothers' Union and Mothers' Meeting, joining with us in the Festival. Between service and tea the bookstall in the Vicarage garden was very popular. After tea in the schoolroom, rewards, premiums and bonuses were given for the year, among others to E. Kirkham and N. Upton for two years' faithful service in one place, and to M. Jones for 15 years satisfactory membership. In the Vicarage garden prizes were awarded for the Bread and Cake Competition, the 2nd prize for the latter being gained by A. Seward.

The Sale of Chronic Invalids' work enabled us to send them £2 18s. 6d. and the sale of our own work for the Branch Fund realised 22/6. A very pretty little play, "the Goblins," was acted under the trees by the Aslockton and Scarrington Candidates; while the audience, seated on the hay, listened to the Goblin's theory of reforming the world, and making poor mortals' lives more full of frolic. Home was reached by 8.30, on foot, on bicycles, and in carriages, and so ended a very happy Festival.

EXTRACTS FROM PARISH REGISTERS.

BAPTISMS.

- July 1. Lina Katherine, daughter of John and Katherine Raynor.
„ 18. Charles Harold, son of Charles and Hilda Catherine Moor.

Time Table for East Bridford of Trains to and from Nottingham, for August, 1910:—

Leave Bingham.	Leave Lowdham.	Arrive Nottingham		Leave Nottingham.		Arrive Bingham.	Arrive Lowdham
		G.N.R. Victoria.	M.R.	G.N.R. Victoria.	M.R.		
—	7.0	—	7.22	5.25	—	5.48	—
7.30	—	7.54	—	—	6.0	—	6.19
8.20	7.49	—	8.10	7.15	—	7.38	—
—	8.25	8.45	—	—	7.20	—	7.39
—	9.10	—	8.45	*8.0	—	8.24	—
* 9.43	—	—	9.30	—	8.35	—	8.54
9.51	—	10.6	—	9.25	—	9.48	—
—	10.1	10.13	—	*10.24	—	10.47	—
10.49	<i>Saturdays</i>	—	10.24	—	11.15	<i>Wednesdays</i>	11.28
—	11.19	11.10	—	—	11.25	—	11.46
11.54	—	12.18	—	11.50	—	12.13	—
—	1.35 <i>except Sat.</i>	—	1.55	—	12.45 <i>except Sat.</i>	—	1.3
*1.40	—	2.4	—	1.5	—	—	1.24
2.1	—	2.25	—	* 1.50	—	2.13	—
—	2.4	—	2.24	—	2.0	—	2.18
—	2.25	—	2.44	—	2.30	—	2.49
—	3.25 <i>Fridays</i>	—	3.40	2.8	—	2.26	—
* 3.32	—	3.56	—	2.43	—	3.6	—
—	4.22	—	4.40	4.5 <i>Saturdays</i>	—	4.27	—
4.54	—	5.18	—	—	4.40	—	4.59
—	4.43	—	5.3	* 5.0	—	5.23	—
5.2	<i>Saturdays</i>	5.25	—	—	6.10	—	6.29
—	6.36	—	6.55	6.15	—	6.38	—
6.44	—	7.8	—	—	6.40	—	6.59
—	7.49	—	8.10	—	7.45	—	8.4
*8.36	—	9.3	—	7.40	—	8.6	—
9.10	—	9.34	—	8.47	—	9.16	—
—	9.42	<i>Saturday</i>	10.2	—	9.20	—	9.39
—	9.55 <i>except Saturday</i>	—	10.15	9.55	—	10.19	—
—	10.15 <i>Saturday</i>	—	10.35	—	10.40 <i>except Thur. & Sat</i>	—	10.58
—	11.12 <i>except Thurs. & Sats.</i>	—	11.30	—	11.25 <i>Thur. & Sat.</i>	—	11.46
—	—	—	—	11.0	<i>Wed. and Sat.</i>	11.24	—

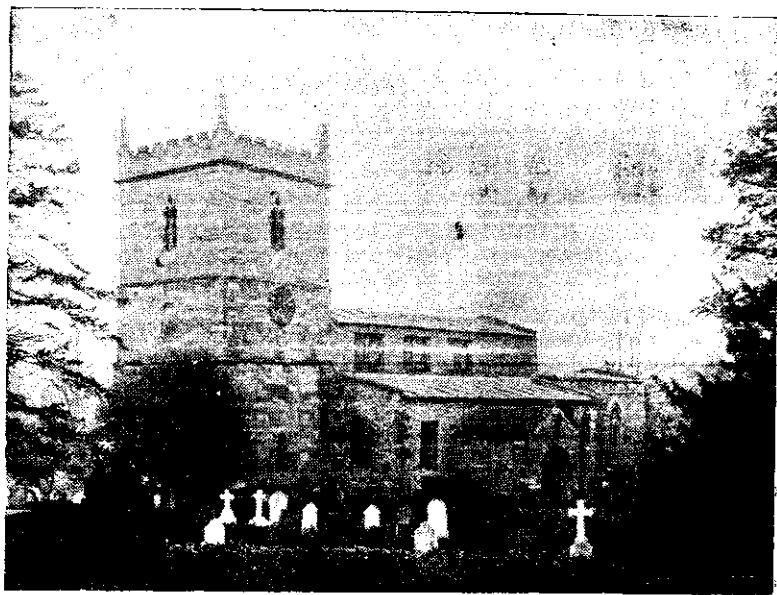
SUNDAYS.

9.15	—	9.41	—	8.27	—	8.52	—
—	12.41	—	1.0	—	10.7	—	10.26
3.3	—	3.27	—	11.40	—	12.4	—
4.55	—	5.18	—	2.10	—	2.33	—
—	6.48	—	7.10	—	2.45	—	3.4
—	8.12	—	8.33	6.13	—	6.36	—
8.35	—	9.0	—	—	8.10	—	8.29
—	—	—	—	9.57	—	10.20	—

*Newark trains.

N.B.—All the G.N.R. trains stop at London Road (High Level Station) as well as at the Victoria Station.

EAST BRIDGFORD MAGAZINE.



St. Peter's Church, East Bridgford.

Services.

HOLY COMMUNION:—

On all SUNDAYS (except 1st in Month) and HOLY DAYS at 8 a.m. and after Morning Prayer on the First Sunday in the Month.

MORNING AND EVENING PRAYER:—

Sundays at 10.45, and 6.30 p.m.

Weekdays at 8 a.m. (Wednesday and Friday at 10), and 6.30 p.m. daily.

HOLY BAPTISM:—

First Sunday in month at 3, or at other Services on due notice.

CHURCHING OF WOMEN:—

Wednesday and Friday at 10, or before any Service on due notice.

SUNDAY SCHOOL:—

At 10 a.m. in the National School.

Children's Service and Catechizing in Church at 2.30.

The very changeable and rainy weather makes the harvest prospects uncertain, and farmers are having anxieties, especially in respect of the pea crop. Still, we must remember that the Harvest time is here, the promise of the Giver of all good things that Seed-time and Harvest shall continue in their seasonable recurrence is unfailing; and that whether the crops are more abundant or less abundant, we owe thanks to God for our life, our health, our food. Our Harvest Thanksgiving Services will be held on Thursday, October 13th, at 7.30, and on the following Sunday.

On July 24th, the Rev. F. C. Pheasant preached in the morning on behalf of the Home Mission work of the Additional Curates' Society, of which he is Organizing Secretary. The alms for this good object amounted to £2 4s. 2d.

The next Men's Service will be held on Sunday, October 2nd, at 3 p.m. Please remember this date, when it is proposed to begin our monthly Services on the first Sunday in the month again.

With deep regret we record the death on August 1st of the Rev. T. W. Swann, Vicar of Orston. For 35 years he was Diocesan Inspector of Religious Knowledge in the Schools of the Bingham Deanery, and his annual visits to our School have been remembered with pleasure by many generations of scholars. He will be succeeded in this work by the Rev. J. P. Hales, Rector of Cotgrave.

Some of us have wondered what is the meaning of the excavations that are being made by the side of the Foss Road at Castle Hill, and will therefore be glad of some information on the subject. It is the site of a Roman military station, called *Margidunum*, the earthworks of which may be still traced on both sides of the Foss, forming an irregular square with the Foss roadway running diagonally across it. These earthworks are more distinct on the Bingham side of the road, than on our own side in the Borough fields, which evidently derive their name from the Saxon word for earthworks, *Burgh*. On the south-west side of the site, a Roman road leaves the Foss at right angles, and leads to the ford or passage of the Trent at Gunthorpe. This is now the Bridle path known as Newton Street, which forms the boundary of the Parish of East Bridgford.

The Roman occupation of Britain began with the invasion by Claudius Cæsar in A. D. 43, and shortly after that date our country became a Roman province, ruled by Roman governors, colonized by Roman citizens, and kept in order by Roman legions. It became as civilized and cultured as any other part of the great Roman Empire; cities and garrison towns were built, wealthy Romans built their country houses, with beautiful pavements, baths, carvings and paintings. Excellent roads were made, and as these were chiefly for the purposes of the military occupation of the country, they had a succession of "stations," sometimes inhabited by a permanent population, sometimes only fortified halting places, at regular intervals along their course.

Some of these great roads still remain, though many parts of them have fallen into disuse. They are characterized by their straight course between great centres; and our Foss Road is a notable example, leading from Lincoln through Leicester, Bath, and Axminster, and perhaps even as far as Exeter.

There is a valuable road-book in existence, the *Itinerary* of Antoninus, written by a Roman Officer about 150 A.D., giving routes, distances and places throughout the whole Roman Empire, which enables us to identify places on a route from London, through Leicester, to Lincoln.

The distances given are, roughly, in English miles,—

Ratae (Leicester) to *Vernometum* (near Willoughby) 13 miles.

Vernometum to *Margidunum* (near East Bridgford) 12 miles.

Margidunum to *Crococalana* (Brough) 14 miles.

Crococalana to *Lindum* (Lincoln) 12 miles.

Half-way between Margidunum and Crococalana a station, *Ad Pontem*, is placed, which was probably only a small post to guard a bridge on the road between East Stoke and Farndon, which was then necessary in the low lying land between the courses of the rivers Trent and Devon. Within present memory, the carriers' carts were liable to get stogged in a marshy part of the road here.

It is always of interest to those who love the history of their country and the people who inhabited it, to learn more about the conditions of the past, and the reasons for present conditions, which have developed continuously out of those of by-gone ages. To the skilled antiquary, pieces of broken pottery of various manufacture, old coins of little intrinsic value, corroded metal ornaments, and perhaps the foundations of buildings, which may be discovered on the site of Margidunum, will help in the reconstruction of a more complete picture of the work of that wonderful organisation, the Roman Empire, to which civilization owes so much. Side by side with the Roman military occupiers of the country, there were too, the British inhabitants of this land, who would bring their country produce to sell to the soldiers, in locally-made pots and pans, whose coppers would be dropped in a ditch, and whose pitchers would be broken at Newton Spring.

When in the year 410 A.D., the Romans withdrew their legions, in consequence of serious troubles at home, the British people had largely profited by the civilization thus introduced among them, military knowledge, arts and manufactures, and above all, Christianity. But before the end of the century a new invader—the Saxons—had come and ruthlessly swept it almost all away. There were still the disused heaps of earth marking the site of Margidunum, which the Saxons would call a *burgh*, as they called their own fortified mounds. There may also have been earthworks nearer to the ford of the river to protect it, but it is easy to see how from one or the other, the village settlement of Saxons that sprang up in the neighbourhood, would gain the name of Burgh-ford, or Bruge-ford, (as in Domesday book), or prettily spelt on a 14th century slab in the Church, Brigeford. In our modern days we have corrupted it into Bridgford, or even as the post office seems to prefer, Bridge-ford, though it has nothing to do with a bridge. But the name, to the understanding mind, will still carry its connection, remote though it may be, with the Roman military station of Margidunum.

CRICKET CLUB.—The following matches have been played:—

July 23.	Carlton Road, (won. 53, 47.)
„ 30.	Orston, (lost 49, 18.)
Aug. 1.	Lowdham P.S.E., (lost 41, 100 for eight wkts.)
„ 6.	Gunthorpe, (lost 6c, 87.)
„ 13.	Caythorpe, (won. 72, 21.)
„ 18.	Notts Unity, (lost 68, 97.)
„ 20.	Mr G. Cartwrights XI, (lost 51, 174 for 8 wkts.)
„ 25.	Notts County Asylum, (unfinished 142, 58 for 4 wkts.)

EXTRACT FROM PARISH REGISTER.
BURIAL.

August 18th Frederick Robert Skillington, aged 56 years.

Time Table for East Bridgford of Trains to and from Nottingham, for September, 1910:—

Leave Nottingham.		Arrive Nottingham.		Leave Nottingham.		Arrive Nottingham.	
Leave Bingham.	Leave Lowdham.	G.N.R. Victoria.	M.R.	G.N.R. Victoria.	M.R.	Bingham.	Lowdham.
—	7.0	—	7.22	5.25	—	5.48	—
7.30	—	7.54	—	—	6.0	—	6.19
—	7.49	—	8.10	7.15	—	7.38	—
8.20	—	8.45	—	—	7.20	—	7.39
—	8.25	—	8.45	*8.0	—	8.24	—
—	9.10	—	9.30	—	8.35	—	8.54
* 9.43	—	10.6	—	9.25	—	9.48	—
9.51	—	10.13	—	*10.24	—	10.47	—
—	10.1	—	10.24	—	11.15	Wednesdays	11.28
10.49	Saturdays	11.10	—	—	11.25	—	11.46
—	11.19	—	11.42	—	—	—	—
11.54	—	12.18	—	11.50	—	12.13	—
—	1.35 <i>except Sat.</i>	—	1.55	—	12.45 <i>except Sat.</i>	—	1.3
*1.40	—	2.4	—	—	1.5	—	1.24
2.1	—	2.25	—	* 1.50	—	2.13	—
—	2.4	—	2.24	—	2.0	—	2.18
—	2.25	—	2.44	—	2.30	—	2.49
—	3.25 <i>Fridays</i>	—	3.40	2.8	—	2.26	—
*3.32	—	3.56	—	2.43	—	3.6	—
—	4.22	—	4.40	4.5 <i>Saturdays</i>	—	4.27	—
4.54	—	5.18	—	—	4.40	—	4.59
—	4.43	—	5.3	* 5.0	—	5.23	—
5.2	<i>Saturdays</i>	5.25	—	—	6.10	—	6.29
—	6.36	—	6.55	6.15	—	6.38	—
6.44	—	7.8	—	—	6.40	—	6.59
—	7.49	—	8.10	—	7.45	—	8.4
*8.36	—	9.3	—	7.40	—	8.6	—
9.10	—	9.34	—	8.47	—	9.16	—
—	9.42	—	10.2	—	9.20	—	9.39
—	9.55 <i>except Saturday</i>	—	10.15	9.55	—	10.19	—
—	10.15 <i>Saturday</i>	—	10.35	—	10.40 <i>except Thur. & Sat.</i>	—	10.58
—	—	—	—	—	11.25 <i>Thur. & Sat.</i>	—	11.46
—	11.12 <i>except Thurs. & Sats.</i>	—	11.30	11.0	<i>Wed. and Sat.</i>	11.24	—

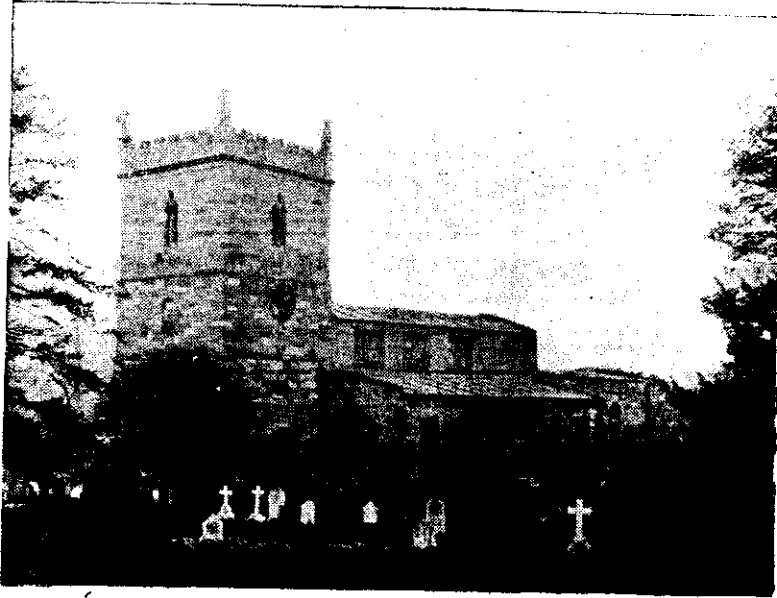
SUNDAYS.

9.15	—	9.41	—	8.27	—	8.52	—
—	12.41	—	1.0	—	10.7	—	10.26
3.3	—	3.27	—	11.40	—	12.4	—
4.55	—	5.18	—	2.10	—	2.33	—
—	6.48	—	7.10	—	2.45	—	3.4
—	8.12	—	8.33	6.13	—	6.36	—
8.35	—	9.0	—	—	8.10	—	8.29
—	—	—	—	9.57	—	10.20	—

*Newark trains.

N.B.— All the G.N.R. trains stop at London Road (High Level Station) as well as at the Victoria Station.

EAST BRIDGFORD MAGAZINE.



St. Peter's Church, East Bridgford.

Services.

HOLY COMMUNION:—

On all SUNDAYS (except 1st in Month) and HOLY DAYS at 8 a.m. and after Morning Prayer on the First Sunday in the Month.

MORNING AND EVENING PRAYER:—

Sundays at 10.45, and 6.30 p.m.

Weekdays at 8 a.m. (Wednesday and Friday at 10), and 6.30 p.m. daily.

HOLY BAPTISM:—

First Sunday in month at 3, or at other Services on due notice.

CHURCHING OF WOMEN:—

Wednesday and Friday at 10, or before any Service on due notice.

SUNDAY SCHOOL:—

At 10 a.m. in the National School.

Children's Service and Catechizing in Church at 2.30.

The Southwell Diocesan Ordination Candidates' Fund, begun in 1907, has raised in three years a sum of £1500. Its object is that there should be a fund from which help may be given to young men who are preparing for Holy Orders, and who are unable to afford the expense which their training entails. It has been estimated that if each Churchman in the Diocese would set apart one penny at each of the four Ember Seasons every year, the necessary funds would be raised for this Diocese. The Bishop asks that this great practical work may be made known to the Laity, and for this purpose a box was placed in Church during the September Ember week for contributions, and will be there each Embertide in the future. The Ember weeks, when the prayers of the Church are asked for those who are to be ordained, occur at the four quarters, in Advent, Lent, Whitsuntide, and September.

MOTHERS' UNION.—Notices of the date of the quarterly meeting will be sent out in the course of this month.

CHOIR OUTING.—The Choir Boys had their excursion to Skegness, by the kindness of their friends, on Thursday, Sept. 1st.

C.E.M.S.—The first meeting of our branch was held on Tuesday, Sept. 13th, when the Rules were approved, and officers appointed. Delegates to the C.E.M.S. Southwell Diocesan Convention, to be held in Nottingham on Oct. 4th, were chosen. All information about the Society, and terms of membership may be obtained from Mr. H. Goldston, Secretary of the Branch.

The Monthly Service for Men is now held on the first Sunday in each month at 3 o'clock.

Our Harvest Thanksgiving Services will be held on Thursday, Oct. 13th, at 7.30, when the Preacher will be the Rev. W. Walker, D.D., Rector of Shelton; and on the Sunday following when the Holy Communion will be celebrated at 8 a.m.

How fitting it would be that all who eat bread, and so partake of the blessing of Harvest, should bear in mind also its greater significance of the Bread of Life; and should show their thankfulness for both earthly and heavenly blessings in the great thanksgiving service of Holy Communion.

The thankofferings at the service on Thursday, Oct. 13th, will be given to the Restoration Fund, and on the Sunday to the Sunday School Fund.

After the uncertain weather in the earlier part of the Harvest, the beautiful September has been doubly welcome; and the Harvest has now been got in well before the end of the month. The Harvest Festival had however already been fixed at a later date, and it is as well to keep the date clear of Goose Fair week.

Goose Fair, the great holiday fair of Nottingham, is of great antiquity. It is said to have formerly continued for 21 days. People must have had plenty of time and little to do, but it was not the whirl of excitement then, which seems to be looked upon as necessary now. When the means of communication with other parts were limited, traders would travel about with their wares, and were glad to set up their booths in a populous town for some length of time. Afterwards it was reduced to nine days, and some few years ago to three. In 1646 Goose Fair could not be held on account of the plague, which during the first half of that century had raged in Nottingham, Newark, and the villages in the neighbourhood; for sanitary precautions were then not understood and much neglected.

In our own village there were two visitations of the plague, and two sad pages of the old Registers record fifty deaths from July to November, 1604, and 85 deaths from April to December, 1637, from the plague. It is to be feared that there are some who despise the precautions which medical knowledge has now shown us are wise and necessary for our good health; but these lessons from old days should teach us that it is better to be guided by science and skill, than to resent good advice as interference, and to rely on one's own imperfect knowledge.

For example, the medical inspection of the children at School, is so entirely for the benefit of the children themselves, that we hope all parents will value the advice given and take any precautions which may be suggested. If this is universally done, and a knowledge of the laws of health more widely spread, we may be sure the rising generation of children will be the better for it.

CRICKET CLUB.—The following are the results of matches that have been played:—

Aug. 13.	Bridgford 72.	Caythorpe, 21.
" 18.	" 68.	Notts Unity, 97.
" 20.	" 51.	Mr. G. Cartwright's XI. 174.
" 27.	" 142.	Notts County Asylum, 58 for 4 wickets.
Sept. 3.	" 39.	Bingham 77.

The season's cricket is now over. Of the 19 matches that have been played, the East Bridgford Cricket Club won 5, and lost 9; four were drawn, and one resulted in a tie.

EXTRACTS FROM PARISH REGISTERS.

BAPTISM.

Aug 31.	Phyllis Vera,	} daughters of James and Ethel May Stanley.
" "	Joyce Christine,	
Sept. 18.	Mabel Marjorie,	daughter of Frank Oliver and Mabel Green.

BURIAL.

Sept. 15. George Holmes, aged 65 years.

Time Table for East Bridgford of Trains to and from Nottingham, for October, 1910:—

Leave Bingham.	Leave Lowdham.	Arrive Nottingham		Leave Nottingham.		Arrive Bingham.	Arrive Lowdham
		G.N.R. Victoria.	M.R.	G.N.R. Victoria.	M.R.		
—	6.58	—	7.18	5.25	—	5.48	—
7.30	—	7.54	—	—	6.0	—	6.19
8.20	7.45	—	8.5	7.15	—	7.38	—
—	—	8.45	—	—	7.20	—	7.39
—	8.25	—	8.45	*8.10	—	8.34	—
—	9.10	—	9.30	—	8.35	—	8.54
* 9.43	—	10.6	—	9.25	—	9.48	—
9.51	—	10.13	—	*10.24	—	10.47	—
—	10.1	—	10.24	—	11.15	<i>Wednesdays</i>	
10.49	<i>Saturdays</i>	11.10	—	—	11.25	—	11.46
—	11.19	—	11.42	—	—	—	—
11.54	—	12.18	—	11.50	—	12.13	—
—	1.35 <i>except Sat.</i>	—	1.55	—	12.45 <i>except Sat.</i>	—	1.3
* 1.40	—	2.4	—	—	1.5	—	1.24
2.1	—	2.25	—	* 1.50	—	2.13	—
—	2.4	—	2.27	—	2.0	—	2.18
—	2.25	—	2.44	—	2.58	—	3.19
—	3.25 <i>Fridays</i>	—	3.40	2.8	—	2.26	—
* 3.32	—	3.56	—	2.43	—	3.6	—
—	4.22	—	4.40	4.5 <i>Saturdays</i>	—	4.27	—
4.54	—	5.18	—	—	4.40	—	4.59
—	4.43	—	5.3	* 5.0	—	5.23	—
5.2	<i>Saturdays</i>	5.25	—	—	6.10	—	6.29
—	6.36	—	6.55	6.15	—	6.38	—
6.44	—	7.8	—	—	6.40	—	6.59
—	7.49	—	8.10	—	7.45	—	8.4
* 9.2	—	9.26	—	7.40	—	8.6	—
9.10	—	9.34	—	8.50	—	9.16	—
—	9.42	<i>Saturday</i>	10.2	—	9.20	—	9.39
—	9.55 <i>except Saturday</i>	—	10.15	9.55	—	10.19	—
—	10.15 <i>Saturday</i>	—	10.35	—	10.40 <i>except Thur. & Sat.</i>	—	10.58
—	—	—	—	—	11.25 <i>Thur. & Sat.</i>	—	11.46
—	11.12 <i>except Thurs. & Sats.</i>	—	11.30	11.0	<i>Wed. and Sat.</i>	11.24	—
SUNDAYS.							
—	12.41	—	1.0	—	10.7	—	10.26
3.3	—	3.27	—	11.40	—	12.4	—
4.55	—	5.18	—	2.10	—	2.33	—
—	6.48	—	7.10	6.13	—	6.36	—
8.35	—	9.0	—	—	8.10	—	8.29
—	—	—	—	9.57	—	10.20	—

*Newark trains.

N.B.—All the G.N.R. trains stop at London Road (High Level Station) as well as at the Victoria Station.

EAST BRIDGFORD MAGAZINE.



St. Peter's Church, East Bridgford.

Services.

HOLY COMMUNION:—

On all SUNDAYS (except 1st in Month) and HOLY DAYS at 8 a.m.
and after Morning Prayer on the First Sunday in the Month.

MORNING AND EVENING PRAYER:—

Sundays at 10.45, and 6.30 p.m.

Weekdays at 8 a.m. (Wednesday and Friday at 10), and 6.30 p.m. daily.

HOLY BAPTISM:—

First Sunday in month at 3, or at other Services on due notice.

CHURCHING OF WOMEN:—

Wednesday and Friday at 10, or before any Service on due notice.

SUNDAY SCHOOL:—

At 10 a.m. in the National School.

Children's Service and Catechizing in Church at 2.30.

Our Harvest Thanksgiving Services were held on Thursday, October 13th, and continued on the following Sunday. On Thursday evening at 7.30, the church was prettily decorated, and well filled. The Rev. Dr. Walker, rector of Shelton, preached from Ps. xxiv. 1. The anthem by Dr. Greene "Thou visitest the earth and blessest it" (Ps. lxxv. 9, 12) was nicely sung by the choir, and we were all glad to hear the Church bells rung again. The offerings £3 8s. 8d. were for the Church Restoration.

There was a crowded congregation on Sunday evening and the Anthem was again sung. During the day the thankofferings amounting to £5 15s. 3d. were for the Church Sunday School Fund.

The Committee of the Jalland Library met on Oct. 7th. The Rev. E. P. Weatherell, who for many years past has acted as Librarian, resigned, and a vote of thanks was passed unanimously for his long continued services, with a sincere expression of regret at his resignation.

Mr. T. Jesson was appointed Librarian, and Mr. Moor and Mr. W. Williscroft were added to the Committee.

The books of the Library may be taken out on Mondays from 6 to 7 p.m. and the subscription is 1/- per annum.

The Choral Society at a meeting held on Tuesday, October 18th, decided to hold practices on Wednesdays at 7.30, beginning Oct. 26th, and if a sufficient number are willing to attend regularly, to take some of the choruses of the "Messiah" with a view to a concert before Christmas.

A party of the Long Eaton Society of Ringers, several of them being members of the C.E.M.S., visited our Tower on Saturday, Oct. 15th, and rang changes in several different methods. They afterwards joined our ringers at tea at the Rectory.

The annual meeting of the Bible Society is arranged for Monday, Nov. 28th, of which due notice will be given.

Under the auspices of the Nottinghamshire Agricultural Society, a Ploughing and Hedge-cutting competition was held on Thursday, Oct. 20th, on Mr. H. Reynold's farm, near Gunthorpe. Earl Manvers presided.

We are glad to notice that the prize for ploughing in the class for Farming lads was won by George Parkes, from the Tollbar. It is a good and proper thing that good agricultural work should be recognised and encouraged. It should be remembered that there is skilled labour in farm work as in all other occupations, and those who take a pride in doing their work well ought to find their efforts appreciated, for agriculture is the backbone of the country.

We congratulate Mr. W. Richardson, jun., on having obtained a scholarship in singing at the Royal Academy of Music and hope it will open up to him a successful career.

S.P.G.—The annual Missionary Sermons will be preached in East Bridgford Church on Sunday, Dec. 11th and that in the evening by the Rev. A. H. Finn, from Rangoon.

Mr. Finn will give an address at a meeting to be held in the Temperance Hall on Tuesday, Dec. 13th, at 7.30 p.m.

The Southwell Diocesan Conference was held at Derby on October 20th, at which over 400 of the clergy and laity of the Diocese were present. We were pleased to see that our Bishop had so far recovered from his indisposition as to be able to take his usual part in the Conference.

A request from the C.E.M.S. Convention recently held at Nottingham, for the election of representatives direct from the parishes, instead of through the rural deaneries was well received and a plan will be considered by the Committee.

The Bishop spoke of the great responsibilities which come from our diocese rapidly growing into the centre of one of the greatest colliery districts in England, with 94,000 workers above and below ground.

Very interesting discussions were held on the very necessary Reform of the Poor law, and improvement in administering Church Charities. Also on Marriage and Divorce, when the Conference showed how strong the feeling was against extending facilities for divorce, and in maintaining as the true principle of our law, "Those whom God hath joined together, let no man put asunder." The Conference was very fully reported in the newspapers, and Churchpeople should, when possible, read what their representatives at this yearly conference, who have given thought to these important questions, have to say upon them.

G.F.S.—The meetings will begin on Tuesday, October 25th, and will be held on alternate Tuesdays at the Rectory.

The Total Abstinence Society held a Social evening on Tuesday, Oct. 25th, and announce Meetings to be on November 8th and 29th.

EXTRACTS FROM PARISH REGISTERS. BAPTISMS.

Oct. 16th. Florence Alice May, daughter of Harry Herbert and Hannah Gamble.
,, 23rd. Marion Clarke, daughter of Charles Clarke and Jane Aliwood.

BURIAL.

Oct. 21st. John Manchester, aged 78 years.

Time Table for East Bridgford of Trains to and from Nottingham, for November, 1910:—

Leave		Arrive Nottingham		Leave Nottingham.		Arrive	
Bingham.	Lowdham.	G.N.R. Victoria.	M.R.	G.N.R. Victoria.	M.R.	Bingham.	Lowdham
—	6.58	—	7.18	5.25	—	5.48	—
7.30	—	7.54	—	—	6.0	—	6.19
8.20	7.45	—	8.5	7.15	—	7.38	—
—	8.25	8.45	—	—	7.20	—	7.39
—	9.10	—	8.45	*8.10	—	8.34	—
* 9.43	—	—	9.30	—	8.35	—	8.54
9.51	—	10.6	—	9.25	—	9.48	—
—	10.1	10.13	—	*10.24	—	10.47	—
10.49	<i>Saturdays</i>	—	10.24	—	11.15	<i>Wednesdays</i>	11.28
—	11.19	11.10	—	—	11.25	—	11.46
11.54	—	—	11.42	11.50	—	12.13	—
—	1.35 <i>except Sat.</i>	12.18	—	—	12.45 <i>except Sat.</i>	—	1.3
* 1.40	—	—	1.55	—	1.5	—	1.24
2.1	—	2.4	—	* 1.50	—	2.13	—
—	2.4	2.25	—	—	2.0	—	2.18
—	2.25	—	2.27	—	2.58	—	3.19
—	3.25 <i>Fridays</i>	—	2.44	2.8	—	2.26	—
* 3.32	—	—	3.40	2.43	—	3.6	—
—	4.22	3.56	—	4.5 <i>Saturdays</i>	—	4.27	—
4.54	—	—	4.40	—	4.40	—	4.59
—	4.43	5.18	—	* 5.0	—	5.23	—
5.2 <i>Saturdays</i>	—	—	5.3	—	6.10	—	6.29
—	6.36	5.25	—	6.15	—	6.38	—
6.44	—	—	6.55	—	6.40	—	6.59
—	7.49	7.8	—	—	7.45	—	8.4
* 9.2	—	—	8.10	7.40	—	8.6	—
9.10	—	9.26	—	8.50	—	9.16	—
—	9.42	9.34	—	—	9.20	—	9.39
—	9.55 <i>except Saturday</i>	—	10.2	9.55	—	10.19	—
—	10.15 <i>Saturday</i>	10.15	10.15	—	10.40 <i>except Thur. & Sat.</i>	—	10.58
—	11.12 <i>except Thurs. & Sats.</i>	10.35	—	—	11.25 <i>Thur. & Sat.</i>	—	11.46
—	—	11.30	—	11.0	<i>Wed. and Sat.</i>	11.24	—

SUNDAYS.

—	12.41	—	1.0	—	10.7	—	10.26
3.3	—	3.27	—	11.40	—	12.4	—
4.55	—	5.18	—	2.10	—	2.33	—
—	6.48	—	7.10	6.13	—	6.36	—
8.35	—	9.0	—	—	8.10	—	8.29
—	—	—	—	9.57	—	10.20	—

*Newark trains.

N.B.—All the G.N.R. trains stop at London Road (High Level Station) as well as at the Victoria Station.

EAST BRIDGFORD MAGAZINE.



St. Peter's Church, East Bridgford.

Services.

HOLY COMMUNION :—

On all SUNDAYS (except 1st in Month) and HOLY DAYS at 8 a.m. and after Morning Prayer on the First Sunday in the Month.

MORNING AND EVENING PRAYER :—

Sundays at 10.45, and 6.30 p.m.

Weekdays at 8 a.m. (Wednesday and Friday at 10), and 6.30 p.m. daily.

HOLY BAPTISM :—

First Sunday in month at 3, or at other Services on due notice.

CHURCHING OF WOMEN :—

Wednesday and Friday at 10, or before any Service on due notice.

SUNDAY SCHOOL :—

At 10 a.m. in the National School.

Children's Service and Catechizing in Church at 2.30.

Our Services during Advent are held on Thursdays at 7 p.m.

FOREIGN MISSIONS.—Wednesday, November 30th, St. Andrew's day was appointed as a day of Intercession for Foreign Missions.

On Sunday, Dec. 11th, our alms are to be given to the Society for the Propagation of the Gospel in Foreign parts. At the evening service, the sermon will be preached by the Rev. A. H. Finn, (late senior Chaplain, Rangoon Diocese) on behalf of the S.P.G.

On Tuesday, December 13th, the Rev. A. H. Finn will give a lecture in the Temperance Hall at 7.30 p.m., in connection with the work of the S.P.G. on Burmah and the Burmese, illustrated by lantern views, chiefly from photographs taken by himself.

The work of Missionaries in the great British Empire in the gorgeous East is full of interest, and this cannot fail to be an interesting lecture.

We should attend it not only to learn, but with a sincere desire to help, as far as in us lies, in the work which God has laid upon us, in spreading the Gospel of Christ throughout the world.

The Men's Service, held monthly on the first Sunday in the month, at 3 p.m., will be on Sunday, Dec. 4th, and on Jan 1st, 1911.

The following account for the new lamps in Church was submitted to the Church Council at its last meeting, on Nov. 6th.

	£	s.	d.		£	s.	d.
For Lamps, chains and				<i>Contributions.</i>			
balance weights	27	3	3	Mr. W. A. Hodges ..	5	0	0
Carriage		12	0	Mr. J. Turner ..	3	0	0
				Mr. T. Jesson ..	3	0	0
				Balance from Collections in Church			
				for Church Restoration	16	15	3
	£27	15	3		£27	15	3

Perhaps some would like to know of any opportunity of making a gift to the Church at Christmas or any other occasion ; and therefore the following necessary articles of Church furniture which are becoming worn out, or which need replacing, may be mentioned. An Office book, for use at Baptisms, Burials, etc., (10/- to 15/-). An Altar Service Book (a suitable one is rather expensive). A lamp for the Church gate. To this list may be added an altar cloth of green material, to complete the set of the four proper colours which are suitable for the various Church seasons. The Rector should always be consulted before choosing any gift for the Church, however small.

The Diocesan Inspector of Religious Education will visit the School on December 8th.

We have had changes in the staff of the School ; Miss H. Walker and Miss H. Burrell have left and their places have been taken by Miss M. M. Wilkinson, who is no stranger to us, and Miss E. C. Whittington.

We must ask for help in improving the heating apparatus of the school, and now that the cold weather is upon us, we hope the kindly disposed will send subscriptions, which will be gladly received by the Rector or the Treasurer, Mr. W. A. Hodges.

The Mothers' Meetings have now begun and are held on Thursday afternoons at 2 p.m. in the Rectory.

CHRISTMAS DAY falls on Sunday this year. There will be celebrations of Holy Communion at 7, 8 and Mid-day.

On New Year's Day, there will be celebrations of Holy Communion at 8 and Mid-day.

The New Year's Tea and Entertainment will take place on Tuesday, Jan. 3rd. The arrangements will be as in former years, tea being served at 5 p.m. and again at 5.45 p.m. for those who find it convenient to come later. Children not in charge of their parents will not be admitted till the second tea. Parents with their children in their charge can obtain a family ticket for 1/6. Single tickets 6d. each.

A Whist drive and dance were arranged for at the Temperance Hall, on behalf of the Nurse Fund, on Monday, Nov 24th, the proceeds being £6 13s 9d.

Parishioners will be interested to see the following summary of amounts received by Collections in Church, Contributions, &c., and expended during the year ending Easter, 1910.

	£	s.	d.
Church Expenses (Churchwardens' Accounts) ..	71	3	6
Alms to Sick and Poor	11	19	6
Diocesan Missionary Studentship... ..	0	17	9
Home Missions (A.C.S.)	3	9	4
Foreign Missions (S.P.G.)	16	13	3
Mission to Jews	1	2	10
Hospitals	7	7	6
Choir Outing, Sept., 1909	4	10	6
Church Building Association	1	4	7
Southwell House	1	3	7
Church History Lecture	1	1	3
Lent Lantern Services	7	2	2
Altar Rails	6	0	0
Clothing Club subscriptions	6	2	0
Coal at Christmas ditto	13	13	0
Sunday School	7	19	10
	£163	10	7

This does not include the collections and subscriptions for the Church Restoration Fund during the year. These have been otherwise acknowledged.

EXTRACTS FROM PARISH REGISTERS.

BAPTISM.

Nov. 20th. Rhoda, daughter of Robert and Hilda Goodman.

BURIALS.

Nov. 4th. Elsie Pride, aged 25 years.
 „ 15th. Hannah Alvey, aged 72 years.

Time Table for East Bridgford of Trains to and from Nottingham, for December, 1910:—

Leave		Arrive Nottingham		Leave Nottingham.		Arrive	
Bingham.	Lowdham.	G.N.R.	M.R.	G.N.R.	M.R.	Bingham.	Lowdham
		Victoria.		Victoria.			
—	6.58	—	7.18	5.25	—	5.48	—
7.30	—	7.54	—	—	6.0	—	6.19
—	7.45	—	8.5	7.15	—	7.38	—
8.20	—	8.45	—	—	7.20	—	7.39
—	8.25	—	8.45	*8.10	—	8.34	—
—	9.10	—	9.30	—	8.35	—	8.54
* 9.43	—	10.6	—	9.25	—	9.48	—
9.51	—	10.13	—	*10.24	—	10.47	—
—	10.1	—	10.24	—	11.15	<i>Wednesdays</i>	
10.49	<i>Saturdays</i>	11.10	—	—	11.25	—	11.28
—	11.19	—	11.42	11.50	—	12.13	11.46
11.54	—	12.18	—	—	12.45 <i>except Sat.</i>	—	1.3
—	1.35 <i>except Sat.</i>	—	1.55	—	1.5	—	1.24
* 1.40	—	2.4	—	* 1.50	—	2.13	—
2.1	—	2.25	—	—	2.0	—	2.18
—	2.4	—	2.27	—	2.58	—	3.19
—	2.25	—	2.44	2.8	—	2.26	—
—	3.25 <i>Fridays</i>	—	3.40	2.43	—	3.6	—
* 3.32	—	3.56	—	4.5 <i>Saturdays</i>	—	4.27	—
—	4.22	—	4.40	—	4.40	—	4.59
4.54	—	5.18	—	* 5.0	—	5.23	—
—	4.43	—	5.3	—	6.10	—	6.20
5.2	<i>Saturdays</i>	5.25	—	6.15	—	6.38	—
—	6.36	—	6.55	—	6.40	—	6.59
6.44	—	7.8	—	—	7.45	—	8.4
—	7.49	—	8.10	7.40	—	8.6	—
* 9.2	—	9.26	—	8.50	—	9.16	—
9.10	—	9.34	—	—	9.20	—	9.39
—	9.42	<i>Saturday</i>		9.55	—	10.19	—
—	9.55 <i>except Saturday</i>	10.15	—	—	10.40 <i>except Thur. & Sat.</i>	10.58	—
—	10.15 <i>Saturday</i>	10.35	—	—	11.25 <i>Thur. & Sat.</i>	11.46	—
—	11.12 <i>except Thurs. & Sats.</i>	11.30	—	11.0	<i>Wed. and Sat.</i>	11.24	—
SUNDAYS.							
—	12.41	—	1.0	—	10.7	—	10.26
3.3	—	3.27	—	11.40	—	12.4	—
4.55	—	5.18	—	2.10	—	2.33	—
—	6.48	—	7.10	6.13	—	6.36	—
8.35	—	9.0	—	—	8.10	—	8.29
—	—	—	—	9.57	—	10.20	—

*Newark trains.

N B — All the G.N.R trains stop at London Road (High Level Station) as well as at the Victoria Station.