

EAST BRIDGFORD MAGAZINE.



St. Peter's Church, East Bridgford.

Services.

HOLY COMMUNION :—

On all SUNDAYS (except 1st in Month) and HOLY DAYS at 8 a.m.
and after Morning Prayer on the First Sunday in the Month.

MORNING AND EVENING PRAYER :—

Sundays at 10.45, and 6.30 p.m.

Weekdays at 8 a.m. (Wednesday and Friday at 10), and 6.30 p.m. daily.

HOLY BAPTISM :—

Second Sunday in month at 3, or at other Services on due notice.

CHURCHING OF WOMEN :—

Wednesday and Friday at 10, or before any Service on due notice.

SUNDAY SCHOOL :—

At 10 a.m. in the National School.

Children's Service and Catechizing in Church at 2.30.

MY DEAR FRIENDS AND PARISHIONERS.

I am indeed glad to be at home again, and to have been able to return thanks to God in church on Christmas Eve for restoration to health. I have too, to thank so many, not only for their kind enquiries and sympathy, but also for what they have so willingly done to help in carrying on services, Sunday School, and other things in my absence. I fear this January number, which begins the fourteenth year of the East Bridgford Magazine, is unavoidably late; but it brings to you, besides grateful thanks, my sincerest wishes for God's blessings on you all in the New Year of 1912.

I am, Yours sincerely,

A. D. HILL.

During the Rector's absence the following clergymen have taken services in East Bridgford Church:—Rev. S. Brodison, Rector of Bilsthorpe, Notts; Rev. L. Nixon; Rev. Alfred Barber, who took a Men's Service on December 10th, and Rev. R. G. B. Lilly. The Rev. A. Rowley was at the Rectory for duty during the week.

The Rev. J. P. Hales, who has succeeded the late Rev. T. W. Swann, as Diocesan Inspector of Religious Instruction in this Deanery, visited the School on Thursday, December 14th, 1911. There were 117 children present at the inspection, and Mr. Hales expressed his very great satisfaction with their knowledge. His Report has now reached us:—"The children knew their work well throughout the School. I was delighted with the Upper group, they were much interested and answered splendidly. Their written narratives were exceptionally good." J. P. HALES, Diocesan Inspector.

The following children have been selected to receive the Rector's prizes.—Group I. Ernest Cooper, Walter Harrison, Beatrice Cuthbert, Florence Smith. Group II. John Kemp, Gertrude Dent. Group III. (Infants and St. I) Willie Newcombe and Margaret Mason.

The Sunday School and Catechism are to be entertained by Miss Fox and Mrs. Cartwright on January 4th.

During the ensuing year, the Rector will give a course of simple instructions in the early history of the Church in England, at the afternoon catechism at 2.30, on the last Sunday of each month. These instructions are open to all, and should be interesting to those who wish to know something of the story and progress of Christianity in our own land.

The Men's Services will be held at 3 p.m. on the first Sunday in each month; January 7th and February 4th being the next two dates.

The New Year's Tea for Parishioners and friends will take place in the Temperance Hall, on Thursday, January 11th, 1912.

The Band of Hope are preparing for their usual Christmas Entertainment on December 29th.

CHRISTMAS, 1911.

WE have been having remarkably mild weather, and a good deal of rain this Christmas. Christmas Day falling on Monday, there was very little opportunity for church decoration; but nevertheless on Christmas morning the Church looked well with its twisted wreaths around the columns, and a wealth of white chrysanthemums in the chancel.

The Rector preached for the first time after an absence of six Sundays, at Evensong on Christmas Eve, when the Festival rightly begins, and it was accordingly a Christmas Sermon. On Christmas day there were good congregations, especially at the early celebration of Holy Communion. At Evensong at 7 p.m., the sermon was varied by singing verses of "O come all ye faithful," which was its subject, and the choir sang two carols at the close. The collections, for the Church Restoration Fund, amounted to £5 8s. 7d.

CHURCH RESTORATION FUND.

Subscription List.

	£	s.	d.
Acknowledged, Aug. 1911.....	335	8	8
Mrs. Black		2	6
Church Box, Sept.		10	3
Sales of Work, etc.	6	4	9
Sept. 14th, Harvest Thankofferings ..	2	6	7
B.W.		10	0
Mrs. Tomlinson	5	5	0
Mr. D. Gower		3	0
Mr. H. Stanley.....		10	0
Mr. C. Millington (Box).....		17	4
Christmas Day Offerings.....	5	8	7
Church Box (Dec)		6	4
Magdalen College, Oxford (in 2 years)	100	0	0
Mr. and Mrs. Hodges.....	100	0	0
To December 28th, 1911.	£557	13	0

During the year that is past, the fund has been gradually growing; and in the New Year, 1912, it is to be hoped that a great effort will be made to increase it. Do not forget that we want £1400, and that if everyone who attends church were to put a small sum—say from 1d. to 1/-, every week into the church box, or into a box of their own, for the Restoration Fund, we should have two or three hundred pounds coming in from this source. Will not you try to do this?

EXTRACTS FROM PARISH REGISTERS.

BAPTISMS.

Dec. 14th. Thomas, son of Robert and Jessie Brand Mattock.
 „ 24th. Mary Elizabeth, daughter of Arthur and Mabel Alice Pepper.

BURIALS.

Nov. 29th. Arthur Smith, aged 1 month.
 Dec. 18th. Mary Ann Mason, aged 80 years.

Time Table for East Bridgford of Trains to and from Nottingham, for January, 1912, and until further notice:—

Leave Bingham.	Leave Lowdham.	Arrive Nottingham G.N.R. Victoria.	Arrive Nottingham M.R.	Leave Nottingham G.N.R. Victoria.	Leave Nottingham M.R.	Arrive Bingham.	Arrive Lowdham
—	6.58	—	7.18	5.25	—	5.48	—
7.30	—	7.54	—	—	6.0	—	6.19
—	7.45	—	8.5	7.15	—	7.38	—
8.20	—	8.45	—	—	7.20	—	7.39
—	8.25	—	8.45	*8.10	—	8.34	—
—	8.59	—	9.20	—	8.35	—	8.54
9.4	—	9.28	—	9.25	—	9.48	—
*9.43	—	10.6	—	*10.24	—	10.47	—
9.51	—	10.13	—	—	11.15	<i>Wednesdays</i>	
—	10.1	—	10.24	—	11.25	—	11.28
10.49	<i>Saturdays</i>	11.10	—	11.50	—	12.13	11.46
—	11.20	—	11.42	—	12.45 <i>except Sat.</i>	—	—
11.59	—	12.23	—	—	1.5	—	1.3
—	1.35 <i>except Sat.</i>	—	1.55	* 1.50	—	—	1.24
* 1.40	—	2.4	—	—	2.0	2.13	—
2.1	—	2.25	—	2.8	—	2.26	2.18
—	2.4	—	2.27	2.43	—	3.6	—
—	2.25	—	2.44	—	2.58	—	3.19
—	3.25 <i>Fridays</i>	—	3.40	4.5 <i>Saturdays</i>	—	4.27	—
* 3.30	—	3.54	—	—	4.40	—	4.59
—	4.22	—	4.40	* 5.0	—	5.23	—
—	4.43	—	5.3	—	6.10	—	6.29
4.54	—	5.18	—	6.15	—	6.38	—
5.2	<i>Saturdays</i>	5.25	—	—	6.40	—	6.59
—	6.36	—	6.55	—	7.45	—	8.4
6.44	—	7.8	—	7.40	—	8.6	—
—	7.49	—	8.10	8.47	—	9.16	—
* 9.2	—	9.26	—	—	9.20	—	9.39
9.10	—	9.34	—	9.55	—	10.19	—
—	9.42	<i>Saturday</i>	10.2	—	10.40 <i>except Thur. & Sat.</i>	—	10.58
—	9.55 <i>except Saturday</i>	—	10.15	—	11.25 <i>Thur. & Sat.</i>	—	11.46
—	10.15 <i>Saturday</i>	—	10.35	11.0	<i>Wed. and Sat.</i>	11.24	—
—	11.12 <i>except Thurs. & Sats.</i>	—	11.30	—	—	—	—

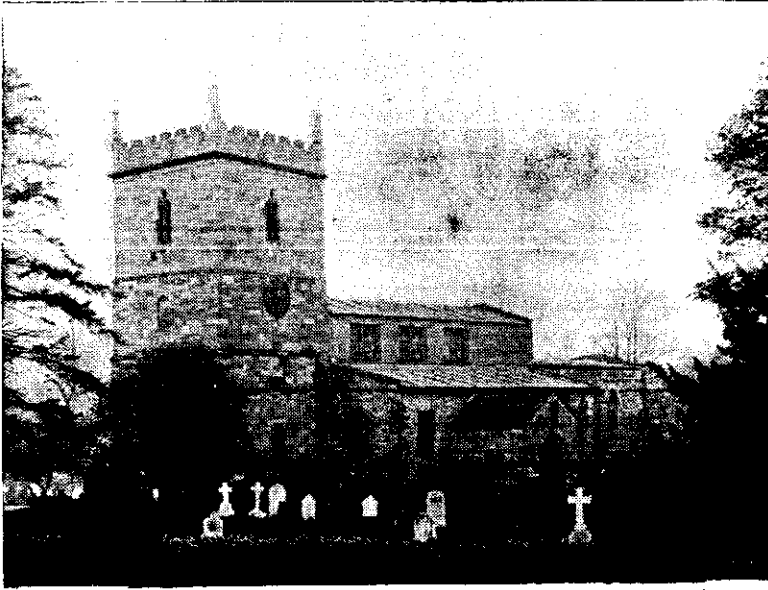
SUNDAYS.

—	12.41	—	1.0	—	10.7	—	10.26
3.3	—	3.27	—	11.40	—	12.4	—
4.55	—	5.18	—	2.10	—	2.33	—
—	6.48	—	7.10	6.3	—	6.28	—
8.35	—	9.0	—	—	8.10	—	8.29
—	—	—	—	9.57	—	10.20	—

*Newark trains.

N.B. — All the G.N.R. trains stop at London Road (High Level Station) as well as at the Victoria Station.

EAST BRIDGFORD MAGAZINE.



St. Peter's Church, East Bridgford.

Services.

HOLY COMMUNION :—

On all **SUNDAYS** (except 1st in Month) and **HOLY DAYS** at 8 a.m. and after Morning Prayer on the First Sunday in the Month.

MORNING AND EVENING PRAYER :—

Sundays at 10.45, and 6.30 p.m.

Weekdays at 8 a.m. (Wednesday and Friday at 10), and 6.30 p.m. daily.

HOLY BAPTISM :—

Second Sunday in month at 3, or at other Services on due notice.

CHURCHING OF WOMEN :—

Wednesday and Friday at 10, or before any Service on due notice.

SUNDAY SCHOOL :—

At 10 a.m. in the National School.

Children's Service and Catechizing in Church at 2.30.

The Rector regrets to find, since his return home at Christmas, that he is still unable to undertake the services in Church. Under the Doctor's orders he is compelled to take a further rest, and hopes to recover strength by a visit of some five weeks' duration to the warmer climate of the South of France.

Under these circumstances it is not at present possible to make all arrangements for the approaching season of Lent. On Ash Wednesday, Feb. 21st, the Holy Communion will be celebrated at 8 a.m. Morning Prayer at 11, Evening Prayer at 7.30.

During February the Men's Service will have to be dropped and also the afternoon Catechism, until further notice.

The Mothers' Meetings will continue to be held at the Rectory, on Thursdays, at 2 p.m., under the management of Mrs. and Miss E. Weatherell and Miss Robinson.

The members of the Mothers' Union have expressed a wish for monthly instead of quarterly Meetings. On January 16th, the members with their husbands who were included in the invitation, came to tea at the Rectory, and afterwards enjoyed a Lantern Entertainment in the School. Mrs. Hodges has undertaken to arrange Meetings in February and March.

The annual Social Gathering of the Girls' Friendly Society has been fixed for Monday, February 19th.

The annual Social Tea for parishioners and friends took place on Thursday, Jan. 11th. Tea tables were provided by, or presided over, by Mrs. Hill, Mrs. Hodges, Mrs. Turner, Mrs. Allwood, Miss Fox, Mrs. Woodsend, Mrs. Field, Mrs. Taylor, Mrs. Pickford and Mrs. Barker. About 280 were present, including several babies in arms.

At the Entertainment which followed, songs were given by Mrs. Rowley, Miss M. Gell, Messrs. H. Hodges, R. Richardson and J. Allwood, a party of Carol singers sang some Christmas carols, Messrs. B. Dent, A. Dent, A. Shipman, and J. Bullimore gave performances on the handbells. Lantern slides of the great event of 1911, the Coronation of King George V., were shown by the Rector, and a description of them was kindly given by the Rev. E. Robinson.

After defraying expenses, £3 10s. was handed over to the Church Restoration Fund.

A meeting of the Trustees of the Jalland Library was held on January 24th for the purpose of filling up vacancies in the trust caused by death or resignation. The present Trustees are Mr. A. Mason, Mr. T. Euerby, Rev. A. D. Hill, Mr. H. Forrest, Mr. T. E. Jesson, Mr. E. E. Coville, Mr. C. Moor, and Mr. W. Williscroft. The Librarian, Mr. Jesson, and Sub-Librarian, Mr. Moor, attend every Monday from 6 to 7 p.m. at the School, for the purpose of changing books.

A Tea and Concert were arranged on December 5th, 1911, in aid of the funds of the Temperance Hall, which has recently been provided with excellent ventilating arrangements. The value of this improvement is felt by all, and we are glad of the success of this Entertainment, by which £10 10s. was obtained. Miss Sharpe contributed a pianoforte solo, songs were given by Count Arco, Mrs. Whitehall, Miss Jesson, Miss M. Wilkinson, Mr. Harold Clough and Mr. R. Richardson. A Play entitled "Clothes Mangled here" was performed, and a Singing Competition was held for girls, won by Kitty Newton and Polly Waterfield; and for youths over 16, won by D. Hallam and Sam Richardson.

On Tuesday, January 23rd, the East Bridgford Choral Society gave their annual Concert, at which Barnett's Cantata, "The Ancient Mariner," was very successfully performed. Artistes—Miss Minnie Wall, soprano, Miss Millicent Wilkinson, contralto, Mr. Edwin Simpson, tenor, Mr. Charles Elvin, bass. Conductor, Rev. J. Standish; Pianist, Miss Sharp, L.L.C.M.; Organist, Mr. C. Doncaster.

EXTRACTS FROM PARISH REGISTERS.

BAPTISM.

January 14th. Constance Mary, daughter of Charles and Sarah Hannah Smith.

BURIAL.

January 27th. Robert Smith, aged 63 years.

Time Table for East Bridgford of Trains to and from Nottingham, for February, 1912, and until further notice:—

Leave		Arrive Nottingham		Leave Nottingham.		Arrive	
Bingham.	Lowdham.	G.N.R.	M.R.	G.N.R.	M.R.	Bingham.	Lowdham
—	—	Victoria.	—	Victoria.	—	—	—
—	6.58	—	7.18	5.25	—	5.48	—
7.30	—	7.54	—	—	6.0	—	6.19
—	7.45	—	8.5	7.15	—	7.38	—
8.20	—	8.45	—	—	7.20	—	7.39
—	8.25	—	8.45	*8.10	—	8.34	—
—	8.59	—	9.20	—	8.35	—	8.54
9.4	—	9.28	—	9.25	—	9.48	—
*9.43	—	10.6	—	*10.24	—	10.47	—
9.51	—	10.13	—	—	11.15	<i>Wednesdays</i>	
—	10.1	—	10.24	—	11.25	—	11.28
10.49	<i>Saturdays</i>	11.10	—	—	—	—	11.46
—	11.20	—	11.42	11.50	—	12.13	—
11.59	—	12.23	—	—	12.45 <i>except Sat.</i>	—	1.3
—	1.35 <i>except Sat.</i>	—	1.55	—	1.5	—	1.24
*1.40	—	2.4	—	* 1.50	—	2.13	—
2.1	—	2.25	—	—	2.0	—	2.18
—	2.4	—	2.27	2.8	—	2.26	—
—	2.25	—	2.44	2.43	—	3.0	—
—	3.25 <i>Fridays</i>	—	3.40	—	2.58	—	3.19
*3.30	—	5.54	—	4.8 <i>Saturdays</i>	—	4.27	—
—	4.22	—	4.40	—	4.40	—	4.59
—	4.43	—	5.3	* 5.0	—	5.23	—
4.54	—	5.18	—	—	6.10	—	6.30
5.2	<i>Saturdays</i>	5.25	—	6.15	—	6.38	—
—	6.36	—	6.55	—	6.40	—	6.59
6.44	—	7.8	—	—	7.45	—	8.4
—	7.49	—	8.10	7.40	—	8.6	—
*9.2	—	9.26	—	8.47	—	9.16	—
9.10	—	9.34	—	—	9.20	—	9.39
—	9.42	<i>Saturday</i>		9.55	—	10.19	—
—	9.55 <i>except Saturday</i>	10.2	—	—	10.40 <i>except Thur. & Sat.</i>	10.58	—
—	10.15 <i>Saturday</i>	10.15	—	—	11.25 <i>Thur. & Sat.</i>	11.46	—
—	—	10.35	—	11.0	<i>Wed. and Sat.</i>	11.24	—
—	11.12 <i>except Thurs. & Sats.</i>	11.30	—	—	—	—	—

SUNDAYS.

—	12.41	—	1.0	—	10.7	—	10.26
3.3	—	3.27	—	11.40	—	12.4	—
4.55	—	5.18	—	2.10	—	2.33	—
—	6.48	—	7.10	6.3	—	6.28	—
8.35	—	9.0	—	—	8.10	—	8.29
—	—	—	—	9.57	—	10.20	—

*Newark trains.

N.B. — All the G.N.R trains stop at London Road (High Level Station) as well as at the Victoria Station.

EAST BRIDGFORD MAGAZINE.



St. Peter's Church, East Bridgford.

Services.

HOLY COMMUNION:—

On all SUNDAYS (except 1st in Month) and HOLY DAYS at 8 a.m. and after Morning Prayer on the First Sunday in the Month.

MORNING AND EVENING PRAYER:—

Sundays at 10.45, and 6.30 p.m.

Weekdays at 8 a.m. (Wednesday and Friday at 10), and 6.30 p.m. daily.

HOLY BAPTISM:—

Second Sunday in month at 3, or at other Services on due notice.

CHURCHING OF WOMEN:—

Wednesday and Friday at 10, or before any Service on due notice.

SUNDAY SCHOOL:—

At 10 a.m. in the National School.

Children's Service and Catechizing in Church at 2.30.

My dear Friends and Parishioners,

I must send you a letter from this warm and sunny place, where I hope by God's help to find my health restored before long. I am already finding benefit to my voice, which I am beginning to like using again.

We are now staying in the small hotel at Carquieranne, in the extreme South of France, and we look over a hedge of flowering aloes, out on the Mediterranean Sea. Though we had a good deal of rain for the first week, for the last few days sky and sea have been deep blue, and until sunset the climate has been that of a cloudless June day. Inland the country is mountainous, covered with pine woods and with bare rocky peaks standing out above them. Every available slope is terraced and cultivated by the very industrious inhabitants, with that intense spade-culture for which the French are famous. The produce of early vegetables and spring flowers for the Paris market is the great industry here, and the beds of the daffodils, ranunculus and anemones (carefully covered over at night with rush matting on light frames) make a beautiful sight; while eucalyptus and mimosa trees in full blossom fill the air with their scent. There are vineyards everywhere but the vines at present are but bare stumps. We are not far from Toulon, the great French naval port, and it is very interesting to watch the warships manœuvring. Six large vessels of the Dreadnought type anchored in the Rade de Giens opposite our balcony the other day, and I watched a submarine gradually sinking and re-appearing in quite another place. On a still night fishermen are to be seen rowing about with flaring torches in the bows to attract the fish, which they then catch by spearing them.

I wish I could transport all the sick and shivering in East Bridgford to this beautiful spot, but even here one has to beware of the sudden change of temperature at sunset, and the *mistral*, a cold N.W. wind, is much dreaded in winter.

In conclusion let me say how much I regret that I am compelled to be away from you during this season of Lent, which is intended to help us all to be mindful of great central truths of our religion, of our own failures, of our needs, and of our Redemption. The Rev. H. Hewson, whom I leave in charge with confidence, will I am sure do his best to remind you of these things, but each one must make his own approach to the throne of grace in repentance and faith. May God grant that we may meet in thankful remembrance at the Holy Eucharist at Easter.

I am your affectionate Pastor,

A. D. HILL.

During Lent:—Evening Prayer and Sermon on Thursdays at 7.

The Services on Good Friday will be—Litany at 8, Morning Prayer at 11, Service of addresses from 2 to 3 p.m., and Evening Prayer at 7.30.

On Easter Day, April 7th, the Holy Communion will be celebrated at 7, 8, and mid-day.

CHURCH OF ENGLAND MEN'S SOCIETY.—The Monthly Meeting was held in the Schoolroom on Monday, February 12th, but owing to the evening being very wet, the attendance did not reach the average. The Rev. H. Hewson, in kindly undertaking to address the members, spoke of the last meeting he attended at Newcastle-on-Tyne, when a vast body of members of the C.E.M.S. was addressed by the Archbishop of York. He was then struck by

the enthusiasm displayed, and could testify to the good work being done by the Society, which held to the Faith once delivered to the Saints. He regretted that family worship, so generally followed by our pious forefathers, was not in such evidence nowadays, and urged Members, especially Parents, to do all they could to assist the Teachers in imparting Christian knowledge to the children. The Secretary then handed invitations from the Bishop of Southwell to attend a Meeting to be addressed by the Archbishop of Canterbury in the Albert Hall, on Friday, March 1st, at 3 p.m.

A Whist Drive, in aid of the East Bridgford District Nursing Fund, took place on February 13th at the Temperance Hall. There was the very satisfactory attendance of 100. The fund will benefit to the extent of £6 7s. 1d. The prizes were won by Ladies: 1 Miss Richmond, 2 Mrs. Coville, 3 Miss Sharpe; Gentlemen: 1 W. Hall, 2 A. Powell, 3 C. Allwood; Consolation prize, Mrs. Boyce. A pleasant evening was spent and dancing enjoyed afterwards.

MOTHERS' UNION.—On February 19th, Mrs. Hodges kindly held the Mothers' Union Meeting at her house, and she hopes to have another meeting in March.

The G.F.S. held their annual Social Evening on February 19th in the Temperance Hall. There was a good attendance of members and their friends. The programme of music and songs was thoroughly appreciated and was followed by an amusing little play, called "The Bright Side," acted by Miss Millington, Miss E. Euerby, Miss Jesson and Miss Whittington. The refreshments were arranged by the Committee. Thanks are accorded to all who worked hard to make it such a success and to all who so kindly contributed. It was impossible not to miss our Presiding Associate and the Rector, who we are so hoping shortly to see amongst us again.

"Shrove" Tuesday, February 20th, was kept in the usual way. The children left School at 11, each one being presented with an orange and a bun by Mrs. Hodges, who said a few kind words to them appropriate to the day, explaining the meaning of the word.

The usual Lent Working Parties are being held every Tuesday afternoon though Lent, at the various houses, to work for the "Sale of Work," in aid of the Restoration Fund, to be held after Easter. On February 20th it was held at the Rectory.

EXTRACTS FROM PARISH REGISTERS.

BAPTISMS.

Jan. 14th Constance Mary, daughter of Charles and Sarah Hannah Smith.
" 30th Margaret Beryl, daughter of Frederick Edward and Mary Ellen Clegg.
Feb. 11th Margaret, daughter of John Robert and Fanny Bullimore.
" 25th Doris Mary, daughter of Tom and Frances Jane Brown.

MARRIAGE.

Feb. 17th Tom Thraves, bachelor, to Maria Shortland, widow.

BURIALS.

Jan. 29th Robert Smith, aged 63 years.
Feb. 13th Sarah Richmond, aged 76 years.

Time Table for East Bridgford of Trains to and from Nottingham, for March, 1912, and until further notice:—

Leave Bingham.	Leave Lowdham.	Arrive Nottingham		Leave Nottingham.		Arrive Bingham.	Arrive Lowdham.
		G.N.R. Victoria.	M.R.	G.N.R. Victoria.	M.R.		
—	6.58	—	7.18	5.25	—	5.48	—
7.30	—	7.54	—	—	6.0	—	6.19
—	7.45	—	8.5	7.15	—	7.38	—
8.20	—	8.45	—	—	7.20	—	7.39
—	8.25	—	8.45	*8.10	—	8.34	—
—	8.59	—	9.20	—	8.35	—	8.54
9.4	—	9.28	—	9.25	—	9.48	—
*9.43	—	10.6	—	*10.24	—	10.47	—
9.51	—	10.13	—	—	11.15	<i>Wednesdays</i>	
—	10.1	—	10.24	—	11.25	—	11.46
10.49	<i>Saturdays</i>	11.10	—	11.50	—	12.13	—
—	11.20	—	11.42	<hr/>			
11.59	—	12.23	—	—	12.45 <i>except Sat.</i>	—	1.3
—	1.35 <i>except Sat.</i>	—	1.55	—	1.5	—	1.24
*1.40	—	2.4	—	*1.50	—	2.13	—
2.1	—	2.25	—	—	2.0	—	2.18
—	2.4	—	2.27	2.8	—	2.26	—
—	2.25	—	2.44	2.43	—	3.6	—
—	3.25 <i>Wednesdays</i>	—	3.40	—	2.58	—	3.19
*3.30	—	5.54	—	4.5 <i>Saturdays</i>	—	4.27	—
—	4.22	—	4.40	—	4.40	—	4.59
—	4.43	—	5.3	*5.0	—	5.23	—
4.54	—	5.18	—	—	6.10	—	6.29
5.2	<i>Saturdays</i>	5.25	—	6.15	—	6.38	—
—	6.36	—	6.55	—	6.40	—	6.59
6.44	—	7.8	—	—	7.45	—	8.4
—	7.49	—	8.10	7.40	—	8.6	—
*9.2	—	9.26	—	8.47	—	9.16	—
9.10	—	9.34	—	—	9.20	—	9.39
—	9.42	<i>Saturday</i>	10.2	9.55	—	10.19	—
—	9.55 <i>except Saturday</i>	—	10.15	—	10.40 <i>except Thur. & Sat</i>	10.58	—
—	10.15 <i>Saturday</i>	—	10.35	—	11.25 <i>Thur. & Sat.</i>	11.46	—
—	11.12 <i>except Thurs. & Sats.</i>	—	11.30	11.0	<i>Wed. and Sat.</i>	11.24	—

SUNDAYS.

—	12.41	—	1.0	—	10.7	—	10.26
3.3	—	3.27	—	11.40	—	12.4	—
4.55	—	5.18	—	2.10	—	2.33	—
—	6.48	—	7.10	6.3	—	6.18	—
8.35	—	9.0	—	—	8.10	—	8.29
—	—	—	—	9.57	—	10.20	—

*Newark trains.

N B — All the G.N.R. trains stop at London Road (High Level Station) as well as at the Victoria Station.

EAST BRIDGFORD MAGAZINE.



St. Peter's Church, East Bridgford.

Services.

HOLY COMMUNION:—

On all SUNDAYS (except 1st in Month) and HOLY DAYS at 8 a.m.
and after Morning Prayer on the First Sunday in the Month.

MORNING AND EVENING PRAYER:—

Sundays at 10.45, and 6.30 p.m.

Weekdays at 8 a.m. (Wednesday and Friday at 10), and 6.30 p.m. daily.

HOLY BAPTISM:—

Second Sunday in month at 3, or at other Services on due notice.

CHURCHING OF WOMEN:—

Wednesday and Friday at 10, or before any Service on due notice.

SUNDAY SCHOOL:—

At 10 a.m. in the National School.

Children's Service and Catechizing in Church at 2.30.

Paris, March 21st, 1911.

My dear Friends and Parishioners,

By the time this letter is in your hands in the April Magazine I shall be again amongst you. I hope this time with health restored, though it is impossible to know whether my throat has fully recovered its proper functions until I have begun to use it regularly. It is my intention to be in my place in Church on Palm Sunday, March 31st. Writing on a wet and stormy day in Paris on my way home, I am sensible of the great contrast of this northern climate with that of the sunny shore of the Mediterranean. But, far more serious than that, I feel that I am returning from my quiet time of rest, into the midst of all the anxiety and misery which our country is now suffering in consequence of the great strife of the coal strike. It is one of the chief reasons why I desire to be back at my post amongst you now. It is my earnest prayer that by the time of our great Festival of Christian Hope and Thanksgiving at Easter, the christian ethics of brotherly love and forbearance will have asserted themselves in practical politics on all sides.

I am, your affectionate friend,

A. D. HILL.

The Annual Sale of Work and Entertainment will take place on Tuesday, April 16th, at the Temperance Hall. Proceeds in aid of the Church Restoration Fund.

A Drawing Room Meeting in aid of the Church of England Waifs and Strays' Society was held at East Bridgford Hall on Friday, March 22nd. The Rev. Arthur Segger addressed the meeting. Over 40 were present and the collection amounted to £6 3s. 0d.

MOTHERS' UNION.—On March 8th, Mrs. Hodges kindly held the Mothers' Union Meeting at her house. The Lent Working Parties were held on the Tuesday afternoons at Mrs. John Upton's house on February 27th, on March 5th at Miss Barker's, on the 12th at Miss May's, on the 19th at the Rectory and on the 26th at Miss Fox's. All the meetings were well attended.

ROYAL SOCIETY FOR THE PREVENTION OF CRUELTY TO ANIMALS.

In response to a request by the Local Secretary, Mr. Goldston allowed the Upper Children to enter an Essay Competition on the following subjects—

- (a) Uses and abuses of the Hame-Rein.
- (b) Say what you know in favour of the Earthworm, Mole and Owl.

Thirty six papers were written which were kindly judged by Mr. Hodges and Miss Fox whose rewards were :—1st prize, Beatrice Cuthbert; 2nd Florence Smith. Certificates.—Poyntz Blagg, Percy Saward, Herbert Cunnington, Harry Cloxton.

CHURCH OF ENGLAND MEN'S SOCIETY.

The monthly meeting was held in the Schoolroom on Monday, March 11th. The Rev. H. Hewson was in the chair and there were present, Messrs. Hodges, R. Gower, J. Mussell, C. Millington, G. Jackson and H. Goldston, Secretary. Mr. Hodges urged the members to make it a point of duty to be regular at the meetings, and the Rev. H. Hewson spoke of the meeting in Nottingham in aid of the Church Extension Society, for the purpose of increasing the Southwell Diocesan Loan Fund to £20,000. The object is to assist the building of Churches, etc. He was glad to announce that a further sum of over £2,000 had already been raised. The meeting also protested against Football Matches on Good Friday, and petitioned the authorities to put down the practice.

The services on Good Friday will be Litany at 8, Morning Prayer at 11, Service of Addresses from 2 to 3 p.m., Evening Prayer at 7.30.

On Easter Day, April 7th, the Holy Communion will be celebrated at 7, 8 and mid-day.

TEMPERANCE HALL RESTORATION FUND.

Receipts.	£	s.	d.	Expenditure.	£	s.	d.
In hand ..		11	13	To Mr. Turner for Ventilation	20	6	1
Proceeds of Entertainment, Dec. 5th,				Balance in hand	1	17	8
1911	10	10	0				
	£22	3	9		£22	3	9

C. ETHEL CARTWRIGHT.

EXTRACTS FROM PARISH REGISTERS.

BAPTISMS.

- March 10th. Phyllis Mary, daughter of Gertrude May Cloxton.
- „ 17th. Ronald William George, son of George William and Charlotte Fennimore.

BURIAL.

- Feb. 26th. Richard Daft, aged 18 months.

THE DAIRY STUDENT.

A TYPICAL DAY AT KINGSTON COLLEGE.

Where shall we begin? At the moment when one tumbles into bed after a good soaking in the calcareous solution which is the only water supply? Or when the loud jangle of the bell dispels all dreams and brings one back to the realities of another day?

By seven o'clock everyone is in the dairies and divided up into batches to perform the duties allotted to the several rooms.

In one Stilton cheese is made, or at certain seasons of the year several kinds of soft cheese—Cambridge, Pont l'Évêque and Camembert. There is also a small vat in which the Kingston cheeses are made. The result of the previous day's work ranged on the shelves has to be scraped and bandaged in the first place.

Then "Bill" trundles in a churnful of milk, and the business of heating up commences. This is probably not completed when the welcome breakfast bell rings, and everyone streams in to the dining-room, where two long tables are occupied by a hungry mob, intent on disposing of the meal set before them in the shortest possible time.

Breakfast over the active business of cheesemaking is carried on. The rennet is put in, and after a suitable interval the curd is cut, stirred up and heated to the desired temperature.

The dairy chief pops in now and then to see that there are not too many mistakes being made, and he tests the curd at the critical moment, deciding when the whey should be run off and the cheese vatted. After this is done the work of cleaning up has to be performed. The floors must be swilled down, and all brasswork, taps, edges of vats, &c., must rival the sun in brightness.

In the afternoon there is a lecture on a different subject each day. Milk-testing is practised by the students, using the Gerber method, and samples are taken from the cows to demonstrate the different proportions of fat in the morning and evening's milk.

Another day the vet comes and explains the various forms of treatment necessary for dealing with the commoner ailments of stock. This is followed by horticulture, treating of fruit growing with practical demonstrations of correct and incorrect styles of pruning young fruit trees.

The subsequent career of the dairy farmer is provided for by a course in bookkeeping, which teaches an orderly and systematic method of keeping account of the profit or loss attending the year's transactions.

The Kingston College occupies a somewhat solitary position in the midst of fields, which at this time of year present scanty promise of amusement, but social distraction is provided in the College by the Friday evening gatherings, which take the form of a whist drive or dance sandwiched between the more improving forms of entertainment provided by a debate or a paper on some subject of which the reader has special knowledge.

The college boasts a very enthusiastic ladies' hockey team, which practices with vigour several times a week, and shows its mettle by giving a good account of itself in the matches.

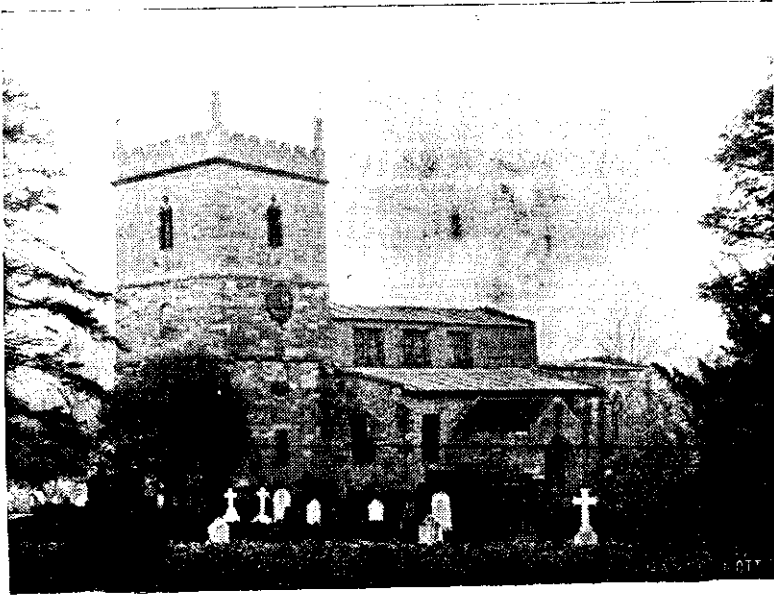
That the six weeks' course is appreciated by the students is shown by the number who return at a later period for the long course.

This means nine months' strenuous labour—in the theory of dairying as well as practical work, terminating in an examination for the "Teacher's Dairy Diploma," and is generally followed by entrance for the "National Dairy Diploma."

The attainment of the three mystic letters, N.D.D., is the summit of the ambition of all young students, and when gained qualifies the happy possessor for many important and lucrative posts.

M. WEATHERELL.

EAST BRIDGFORD MAGAZINE.



St. Peter's Church, East Bridgford.

Services.

HOLY COMMUNION:—

On all SUNDAYS (except 1st in Month) and HOLY DAYS at 8 a.m.
and after Morning Prayer on the First Sunday in the Month.

MORNING AND EVENING PRAYER:—

Sundays at 10.45, and 6.30 p.m.

Weekdays at 8 a.m. (Wednesday and Friday at 10), and 6.30 p.m. daily.

HOLY BAPTISM:—

Second Sunday in month at 3, or at other Services on due notice.

CHURCHING OF WOMEN:—

Wednesday and Friday at 10, or before any Service on due notice.

SUNDAY SCHOOL:—

At 10 a.m. in the National School.

Children's Service and Catechizing in Church at 2.30.

The Easter Festival has passed, with bright weather; and though the anxiety and distress consequent on the Coal Strike had not passed away, there were brighter hopes of a settlement of difficulties, and the strike was declared at an end on Monday, April 15th.

At the Easter Services the Church was beautifully decked with a wealth of spring flowers; and the very suitable anthem "They have taken away my Lord" (*Stainer*) was sung by the choir at Morning and Evening Services. There were three celebrations of the Holy Eucharist, at 7, 8, and mid-day and the number of those joining in this greatest of thanksgivings was large.

The Rector was very glad to be able to take part in the services for the first time after an absence of eight weeks, on Palm Sunday, and is deeply grateful for the kindly greetings he has received. It will, however, be some time before he will be able to do the whole of the duty himself.

The Bishop of Southwell held a Confirmation in Bingham Church on Tuesday, April 2nd, at 3 p.m. There were about 80 candidates.

The Easter Vestry was held, as usual, on Easter Tuesday, at 7.30 in the school. The Church accounts for the past year were presented and passed, showing an adverse balance of £9 19s. 2½d. which it is hoped may be defrayed by special subscriptions before very long.

The Rector, referring to his recent illness and absence, thanked the Church officials, and many others who have helped in carrying on parochial work, including Rev. H. N. C. Hewson who has been Locum Tenens for eight weeks. The Rector again nominated Mr. J. Turner, and the Vestry re-elected Mr. R. Swanwick, as churchwardens for the ensuing year. Messrs. C. Allwood, E. Coville, C. Millington, D. Gower, and J. Woodsend, were re-appointed as sidesmen.

SUMMARY OF CHURCHWARDENS' ACCOUNTS AND COLLECTIONS

IN CHURCH, EASTER, 1912.

Receipts.		Expenditure.	
£	s. d.	£	s. d.
<i>Subscriptions, Easter 1911—</i>			
Mrs. Tomlinson	2 0 0	Balance repaid to Churchwardens	8 2 7
Miss Fox	2 0 0	Care of Churchyard	2 10 0
Mr. Hodges	2 0 0	Insurance, Fees etc.	3 0 3
Mr. Woodsend	2 0 0	Organ, Choir, etc.	34 14 2
Mr. Turner	10 0	Clerk's Salary	15 0 0
		Bell ringers	9 0 0
		Fuel, lights and cleaning	9 8 6
Church Expenses	74 12 5½	Lantern, Lent, 1911	8 2 7
Sick and Poor Fund	9 14 9	Sundries	3 3 7
<i>Special Objects, viz:—</i>			
Diocesan Sunday	8 17 11	Alms, Sick and Poor	9 14 9
Missionary Studentship	1 8 6	„ Special Objects (as other side)	56 13 0
Home Missions A.C.S.	2 12 6		
Foreign Missions S.P.G.	5 14 3		
Hospitals	7 0 6		
Southwell House	18 3		
Jews in the East	1 9 9		
Fuel distress fund	3 11 2		
Church Restoration	20 14 8		
Sunday School	4 5 6		
	56 13 0		
Balance due to Churchwardens	9 19 2½		
	£159 9 5		£159 9 5

Presented and passed at Easter Vestry,
April 9th, 1912.

JOSEPH TURNER, } Churchwardens.
ROBERT SWANWICK, }

CHURCH RESTORATION FUND.

	£	s.	d.
Acknowledged, January, 1912	557	13	0
Mr. W. R. Sharman	1	0	0
Miss Brumby	5	0	0
Church Box, January 30th	4	1	0
Faster Offerings	7	12	0
Sales of Work and Entertainment, April			
16th, 1912	31	10	1
Church Box, April	4	4	0
Total, April 23rd, 1912	£598	14	6

A Sale of Work and Entertainment was held at the Temperance Hall on Tuesday, April 16th, from 2.30 to 9.30 p.m., in aid of the Church Restoration Fund. Stalls were provided by the G.F.S. and the members of the Working Party, for work, fancy articles, refreshments, etc.; a bran tub was provided, music, and various competitions and progressive games were arranged for the visitors. The proceeds amounted to £31 16s. 1d. for the Church Restoration Fund.

On Rogation Sunday, May 12th our alms are asked on behalf of the Bishop's Diocesan Fund. This is an annual appeal for objects of the highest importance, and it is right that we should do our utmost to strengthen our Bishop's hands by contributing to this central fund for maintenance, extension, and development within the Archdeaconry of Nottingham, of (a) Church building and endowment, (b) Mission work in popular centres, (c) Education and Religious Instruction. We may point out with some satisfaction that during the last ten years the contribution from East Bridgford has gradually risen from about £2, to £8 17s 11d. in 1911, as our congregation has gradually come to recognize that every parish has its responsibilities towards the Diocese as a whole, and the work of the Bishop as its head. Shall we not try to increase our share to £10 this year? Everyone who contributes an annual sum of 1/- or upwards as a subscription, is considered a member of the Church Extension Society for Nottingham, and is entitled to a report of the work done; but of course the collections in Church are sent up from the whole parish.

The Notts Education Committee has arranged for another visit of the Dairy School. The tent was again erected in Mr. S. Wilkinson's field by his kind permission on April 17th, and 12 pupils have been at work, under Miss Rowland and her assistant Miss M. C. Taylor. It is hoped that some of them will be competitors at the Newark Show on Tuesday and Wednesday, May 14th and 15th, and perhaps also at the Royal Show at Doncaster in July.

The grocers of East Bridgford have agreed to change the day for early closing from Tuesday to Wednesday. They desire to give notice of this change, which will begin at the end of April, the shops being closed on Wednesday, May 1st, and all the following Wednesdays. The hour of closing will be 1 p.m. We hope the inhabitants of East Bridgford will cordially help them to obtain a well earned holiday, by finishing their shopping early on Wednesdays.

A meeting was held in the Temperance Hall on Wednesday, April 10th, which was attended by members of the Friendly Societies in East Bridgford, the Rector being in the chair. The meeting was addressed by Mr. Staton, the Secretary of the Nottingham United Order of Odd-Fellows, who gave a very clear account of the administration of the new Insurance Act, under approved Friendly Societies, and explained what was required as to contributions, and the way in which the benefits would be given.

An East Bridgford troop of the Nottingham Boy Scouts has been formed, and at present contains fifteen members. H. Richards is Scout Master, and G. H. Bateman, Assistant Scout Master. The Scouts joined others from West Bridgford and Sneinton in camp at Easter, by the invitation of Capt. Jeffcock, at Car Colston Hall, and about 80 attended service on Easter Day at East Bridgford Church in uniform.

ASCENSION DAY, May 16th.—H.C. at 8. Services at 11 and 7.30.

WHIT SUNDAY, May 26th.—H.C. at 7, 8 and mid-day.

EXTRACTS FROM PARISH REGISTERS.

BAPTISMS.

April 7th, Easter Day. Ruth, daughter of John Wright and Ethel Nina Wilkinson.
" " Viola and Zena, daughters of Robert and Hilda Goodman.

MARRIAGE.

March 8th, at BARROWBY, Lincs. Tom Allan Smith and Florence Wilson.

BURIAL.

March 29th, at BINGHAM. Catherine Mason, aged 78 years.

The annual general meeting of the Cricket Club was held on Tuesday, April 23rd, the Rev. A. D. Hill in the chair. The accounts for the year 1911 were presented, shewing a balance in hand of £4 0s. 11d. Special subscriptions amounting to £19 5s. 0d. had been expended in re-laying the cricket ground. During the year 7 matches have been won, 10 lost, and 3 drawn. The officers were appointed. *President*—W. A. Hodges, Esq.; *Captain*—Cuthbert R. Weatherell; *Vice-Captain*—H. P. Goldston; *Secretary*—E. N. Sears; *Treasurer*—Rev. A. D. Hill; *Committee*—Messrs. R. Richardson, C. Moor, A. Woodsend, J. Lodder, H. Hoyles, E. E. Coville, G. H. Bateman, C. Wilkinson, A. Smith.

A vote of thanks was accorded to Messrs. J. Lodder and C. May for the trouble they have taken in connection with the re-laying of the cricket ground. It was agreed to allow the Ladies' Cricket Club to use the ground and pavilion, etc., one day in the week.

The winter meetings of the Total Abstinence Society were brought to a close by a successful social gathering on April 23rd. The Rev. H. N. C. Hewson was in the chair, and an enthusiastic audience enjoyed a programme provided by twelve performers.

The trains on the G.N.R. and M.R. are now running nearly as usual. The 1.40 train from Bingham is discontinued; the 4.40 from Nottingham to Lowdham is now 5.8 p.m., and some of the late M.R. trains are discontinued for the present.

EAST BRIDGFORD MAGAZINE.



St. Peter's Church, East Bridgford.

Services.

HOLY COMMUNION:—

On all SUNDAYS (except 1st in Month) and HOLY DAYS at 8 a.m.
and after Morning Prayer on the First Sunday in the Month.

MORNING AND EVENING PRAYER:—

Sundays at 10.45, and 6.30 p.m.

Weekdays at 8 a.m. (Wednesday and Friday at 10), and 6.30 p.m. daily.

HOLY BAPTISM:—

Second Sunday in month at 3, or at other Services on due notice.

CHURCHING OF WOMEN:—

Wednesday and Friday at 10, or before any Service on due notice.

SUNDAY SCHOOL:—

At 10 a.m. in the National School.

Children's Service and Catechizing in Church at 2.30.

A Pastoral letter from the Bishop of Southwell was read at the morning and evening service on Rogation Sunday, May 12th, making an urgent appeal for funds to carry on the various works of the Church in this populous Diocese. The alms during the day were devoted to the Church Extension Society for the Archdeaconry of Nottingham, and our response to the Bishop's appeal amounted to £6 3s.

The population of East Bridgford has varied considerably from time to time. In 1801, when the first general census of the United Kingdom was taken, our population was 526. In 1851, owing to the growth of various village industries, brickmaking, malting, frame-knitting and river-transport, it had risen to 1155. In 1891 the inhabitants were 857 and in 1901 the number fell to 756.

Mr. Sharp, enumerator in the Census taken on April 2nd, 1911, supplies the following figures for East Bridgford :—

Houses occupied	213	Number of Males.....	346
Ditto unoccupied	16	Number of Females	451
Public Buildings	8		
No. of Houses	237	Total population	797

The Alms on Ascension Day, 8s., were given for the Diocesan Missionary Studentship Fund.

On Whit-Sunday, the alms were given for the Church Restoration Fund, and amounted to £5 14s. 1d.

On Whit-Monday, the Bridgford Hill Lodge of Oddfellows attended Church at 11.45 a.m. for their annual Festival Service. The Rector preached on *Rom. viii. 26*, "The Spirit helpeth our infirmities." The object of their Friendly Society, he said, was in a true manly way to prepare for, to meet, and to bear the difficulties of life. St. Paul tells us it is here that the Holy Spirit helps us. The Spirit is God dwelling in us. He helps us especially in our prayers, taking our feeble thoughts and turning them into acceptable prayer and so helps us to gain foresight, courage and patience, not only for the infirmities of this life, but for overcoming the hindrances we find in reaching the glory set before us.

The club met for dinner at 1 p.m. at the Royal Oak Inn. The Report for the past year was circulated, showing a net increase on the Sick and Management Funds of £22. The number of members is now 95. This lodge was opened in 1844, as a branch of the Nottingham Unity of Oddfellows, which celebrates its centenary this year.

The East Bridgford Primitive Methodist Friendly Society held its annual meeting on Whit-Monday. The Society, which has 74 members, was established in 1840 and the balance sheet now published shows that its funds amount to £884 0s. 3d.

On Whit-Tuesday, the Band of Hope paraded the Village with its members and supporters and a Band. A Tea followed and an entertainment was given in the evening.

THE CRICKET CLUB.—The following matches have been played this season. Single 58; Married 40. East Bridgford 115; Bingham 2nd 68. East Bridgford 64; Shelford 45.

The Dairy School provided by the County Council ended its visit on April 29th. In the closing Competition, for a prize of a free course of tuition at the Kingston Dairy College, the first prize was won by Miss D. Alvey and the second by Mrs. Lowe.

At the Newark Agricultural Show prizes were gained for butter-making by Mrs. Lowe and Miss Maggie Price, of Screveton. Miss Weatherell gained the first prize in the open competition.

Sunday, June 16th, is the G.F.S. Intercession Day. Members are invited to join in Thanksgiving and Intercession for the work of the Society and especially in the Holy Eucharist on that Sunday.

EAST BRIDGFORD FEAST.—Our Feast Sunday is June 23rd, the 3rd Sunday after Trinity. St. Peter's day falls on the following Saturday, June 29th. All those who desire to join in the real intention and spirit of our Parish Festival are invited to attend the celebration of Holy Eucharist on Feast Sunday at 8 a.m. that we may unite in offering our worship and thanks to Almighty God in that great service.

The offertories at the services on Feast Sunday are for the choir and Ringers' Fund.

The forty-ninth Exhibition of the East Bridgford Horticultural Society will take place on Tuesday, June 25th, the show is open from 2 to 9 p.m. Admission before 5 p.m. 6d., after 5 p.m. 3d. Full particulars are published in the Schedule, which can be obtained of Mr. H. Goldston, Hon. Sec., or members of the Committee.

A new Organ was opened at the Methodist Chapel on May 23rd, by Lady Boot, of Nottingham.

EXTRACTS FROM PARISH REGISTERS.

BAPTISMS.

April 28th. Albert, son of John and Emma Cooper.
 " " William Richmond, son of John Thomas and Ellen Knight.
 May 26th. Whit-Sunday. George Dent, son of Samuel and Ethel Mary Miller.
 " " " Tom, son of Tom and Maria Thraves.

MARRIAGE.

April 30th. At NORTH WINGFIELD, DERBYSHIRE. Henry Wombwell and Frances Ellen Rhodes.

BURIAL.

May 29th. Frederick Richmond, aged 67 years.

Time Table for East Bridgford of Trains to and from Nottingham, for June, 1912, and until further notice:—

Leave Bingham.		Leave Lowdham.		Arrive Nottingham		Leave Nottingham.		Arrive Bingham.		Arrive Lowdham.	
				G.N.R.	M.R.	G.N.R.	M.R.				
				Victoria.		Victoria.					
—	—	6.58	—	—	7.18	5.25	—	5.48	—	—	—
7.30	—	—	7.54	—	—	—	6.0	—	—	6.19	—
—	7.46	—	—	8.5	—	7.15	—	7.38	—	—	—
8.20	—	8.45	—	—	8.45	—	7.20	—	7.39	—	—
—	8.25	—	—	8.45	—	*8.10	—	8.34	—	—	—
—	8.59	—	—	—	9.20	—	8.35	—	—	8.54	—
9.4	—	9.28	—	—	—	9.25	—	9.48	—	—	—
*9.43	—	10.6	—	—	—	*10.24	—	10.47	—	—	—
9.51	—	10.12	—	—	—	—	11.25	—	—	11.46	—
—	10.1	—	10.24	—	—	11.50	—	12.13	—	—	—
10.49	<i>Saturdays</i>	11.10	—	—	—	—	12.45 <i>except Sat.</i>	—	—	1.3	—
—	11.20	—	11.42	—	—	—	1.5	—	—	1.24	—
11.59	—	12.23	—	—	—	* 1.50	—	2.13	—	—	—
—	1.35 <i>except Sat.</i>	—	1.55	—	—	—	2.0	—	—	2.18	—
*1.40	—	2.4	—	—	—	2.8	—	2.26	—	—	—
2.1	—	2.25	—	—	—	2.43	—	3.6	—	—	—
—	2.4	—	2.27	—	—	—	2.58	—	—	3.19	—
—	2.25	—	2.44	—	—	4.8 <i>Saturdays</i>	—	4.27	—	—	—
—	3.25 <i>Fridays</i>	—	3.40	—	—	—	4.40	—	—	4.59	—
*3.30	—	5.54	—	—	—	* 5.0	—	5.23	—	—	—
—	4.22	—	4.40	—	—	—	6.10	—	—	6.19	—
—	4.43	—	5.3	—	—	6.15	—	6.38	—	—	—
4.54	—	5.18	—	—	—	—	6.40	—	—	6.59	—
5.2	<i>Saturdays</i>	5.25	—	—	—	—	7.45	—	—	8.4	—
—	6.36	—	6.55	—	—	7.40	—	8.6	—	—	—
6.44	—	7.8	—	—	—	8.47	—	9.16	—	—	—
—	7.49	—	8.10	—	—	—	9.20	—	—	9.39	—
*9.2	—	9.26	—	—	—	9.55	—	10.19	—	—	—
9.10	—	9.34	—	—	—	—	11.25	—	10.19	—	—
—	9.42	<i>Saturday</i>	10.2	—	—	11.0	<i>Wed. and Sat.</i>	11.24	—	11.46	—
—	9.55 <i>except Saturday</i>	—	10.15	—	—	—	—	—	—	—	—
—	10.15 <i>Saturday</i>	—	10.35	—	—	—	—	—	—	—	—

SUNDAYS.

—	12.41	—	1.0	—	10.7	—	10.26
3.3	—	3.27	—	11.40	—	12.4	—
4.55	—	5.18	—	2.10	—	2.33	—
—	6.48	—	7.10	—	2.50	—	3.9
8.35	—	9.0	—	6.3	—	6.28	—
—	8.12	—	8.33	—	8.10	—	8.20
—	—	—	—	9.57	—	10.20	—

*Newark trains.

N B — All the G.N.R trains stop at London Road (High Level Station) as well as at the Victoria Station.

EAST BRIDGFORD MAGAZINE.



St. Peter's Church, East Bridgford.

*S*ervices.

HOLY COMMUNION:—

On all SUNDAYS (except 1st in Month) and HOLY DAYS at 8 a.m. and after Morning Prayer on the First Sunday in the Month.

MORNING AND EVENING PRAYER:—

Sundays at 10.45, and 6.30 p.m.

Weekdays at 8 a.m. (Wednesday and Friday at 10), and 6.30 p.m. daily.

HOLY BAPTISM:—

Second Sunday in month at 3, or at other Services on due notice.

CHURCHING OF WOMEN:—

Wednesday and Friday at 10, or before any Service on due notice.

SUNDAY SCHOOL:—

At 10 a.m. in the National School.

Children's Service and Catechizing in Church at 2.30.

A petition to Parliament was forwarded from East Bridgford on June 16th, containing about 228 signatures, against the Bill for Disestablishing and Disendowing the Church in Wales. Churchpeople and Dissenters alike, who have signed the petition, have been of one mind with regard to the Bill, that it is not right or honest to take away the property and money which has been given to the Church for the service of God, and which is being well used by the Church for the moral and spiritual welfare of the Welsh people; and that it is contrary to justice and to religious liberty, to deprive the Church in Wales of its unity with the Church in England, as this bill proposes to do; and that this Bill without conferring benefit on any religious body, will be a severe blow to religion.

The East Bridgford Post Office, from June 25th, now closes on Tuesday afternoons. No business is transacted after 1 p.m., except that letters are delivered and despatched as usual. Telegraph Service is transacted through Bingham. We are glad that this hard working department is able to get its weekly half-holiday.

THE DIOCESAN MISSION FESTIVAL will take place on Thursday, July 11th, in Southwell Cathedral, under the presidency of the Lord Bishop of the Diocese. Service at 11.15. Addresses in the Nave 3 p.m. by the Bishops of Madras and South Japan. Evensong at 5.15. Special railway fares are arranged.

CHURCH EXPENSES.—The adverse balance of £9 19s. 2½d. in the accounts presented by the Churchwardens at the Easter Vestry, has now been defrayed by the following contributions collected by Mr. Turner:—Mrs. Tomlinson £2, Miss Fox £2, Mr. Hodges £2, Mr. Woodsend £2, Mrs. Milward 10/-, Mrs. Weatherell 10/6, Mr. C. Moor 5/-, Mr. Turner 14/6, total £10.

Sunday, June 23rd, was our Feast Sunday. The offerings during the day were for the Choir and Ringers' Fund and amounted to £6 3s. 3d.

In the evening a hearty service and full church marked the occasion. After the evening services addresses were given in the Fair field by the Rector and by the Rev. J. Algar, of Bingham, and Mr. H. Forrest, at which a good many of those employed in the travelling shows were present.

The forty-ninth annual show of the East Bridgford Horticultural Society was held in Mr. Turner's field on Feast Tuesday, June 25th. In spite of the early date of the show and peculiar season, the show was considered a good one. The sweet peas, black currants and strawberries were especially good. Unfortunately the rain which fell at intervals the whole of the day adversely affected the attendance. The Radcliffe Brass Band gave a selection in the afternoon and played for Dancing in the evening. The Judges were Mr. J. Sears, of Whatton Manor and Mr. Scott, of Cropwell Butler.

Appended are the names of the prizewinners:—

CLASS A. (Gentlemen, Professional Gardeners and Farmers).

Roses—1, Dr. Duff; 2, Miss Fox.
Geranium for Bloom, 1, Rev. A. Hill; 2, Mr. Hodges.
Ditto for foliage, 1 and 2, Rev. A. Hill.
Pelargonium—1, Fox; 2, Rev. A. Hill.
Fuchsia—1, and 2, Fox.
Calceolaria, Herbaceous—1, Rev. A. Hill
Ditto Shrubby—1 and 2, Fox.
Petunia—1, Hodges; 2, Rev. A. Hill.
Plants, Greenhouse—1, Rev. A. Hill; 2, Fox.
Sweet Williams—1 and 2, Fox.
Bouquet of Garden Flowers—1 and 2, Fox.
Pansies—1, Rev. A. Hill; 2, Woodsend.
Sweet Peas—1 and 2, Woodsend.
Carrots—1, Woodsend; 2, Rev. A. Hill.
Cauliflowers—1 and 2, Rev. A. Hill.
Cucumbers—1, Hodges; 2, Fox.
Broad Beans—1 and 2, Rev. A. Hill.
Onions Spring sown—1 and 2, Rev. A. Hill.
Ditto Autumn Sown—1, Rev. A. Hill; 2, Woodsend.
Lettuces—1 and 2, Fox.
Peas—1, Hodges; 2, Rev. A. Hill.
Potatoes Round—1, Mrs. Weatherell; 2, Rev. A. Hill.
Ditto Kidney—1, Mrs. Weatherell; 2, Rev. A. Hill.
Turnips 3—1 and 2, Fox.
Apples last year's—1, Rev. A. Hill; 2, Hodges.
Ditto this year's—1, Richardson; 2, Woodsend.
Gooseberries—1 and 2, Hodges.
Currants White—1 and 2, Woodsend.
Ditto Red—1 and 2, Rev. A. Hill.
Ditto Black—1, May; 2, Woodsend.
Raspberries—1 and 2, Richardson.
Strawberries—1, Hodges; 2, Woodsend.
Best tray of Vegetables—1, Rev. A. Hill; 2, Fox.

CLASS B. (Tradesmen and Cottagers).

Roses—1, W. C. Millington; 2, J. E. Coville.
Geranium for bloom—1 and 2, Millington.
Ditto for foliage—1 and 2, Millington.
Pelargonium—1 and 2, Millington.
Calceolaria—1 and 2, Swingler.
Petunia—1 and 2, Millington.
Window Plants—1, Coville; 2, Knight.
Plants Greenhouse—1 and 2, Millington.
Sweet Williams—1 and 2, Coville.
Pansies—1, Coville; 2, Millington.
Sweet Peas—1 and 2, Sears.
Carrots—1, Sears; 2, Millington.
Cauliflowers—1, Swingler; 2, Sears.
Cucumbers—1, Coville; 2, Millington.
Broad Beans—1, Millington; 2, Swingler.
Onions Spring sown—1 and 2, Millington.
Ditto Autumn sown—1, Sears; 2, Millington.
Lettuce 3—1, Sears; 2, Swingler.
Peas—1, Sears; 2, Millington.
Potatoes Round—1 and 2, Millington.
Ditto Kidney—1 and 2, Hoyles.
Turnips—1 and 2, Sears.
Apples last year's—1 and 2, Swingler.
Ditto this year's—1, Alvey; 2, Swingler.

Gooseberries—1, Millington; 2, Shipman.
Currants White—1 and 2, Alvey.
Ditto Red—1 and 2, Alvey.
Ditto Black—1 and 2, Shipman.
Raspberries—1, Coville; 2, Alvey.
Strawberries—1 and 2, Swingler.
Cherries—1 and 2, Alvey.
Best tray of Vegetables—1 and 2, Millington.

CLASS C. (Labourers).

Roses—1, T. A. Smith; 2, Higgs.
Geranium for bloom—1 and 2, F. O. Green.
Ditto for foliage—1, Green; 2, Watson.
Pelargonium
Fuchsia
Calceolaria } 1 and 2, Green.
One pot of Musk }
Petunia
Window Plants—1, Higgs; 2, Watson.
Sweet Williams—1, Green; 2, A. Smith.
Collection of Cut Flowers
Pansies
Sweet Peas } 1 and 2, Green.
Carrots }
Cauliflowers }
Cabbages
Rhubarb—Cloxtan.
Broad Beans—1, Green; 2, Higgs.
Onions, Spring sown—1, Green.
Onions, Autumn sown—1 and 2, Green.
Lettuces—1 and 2, Green.
Eschalots—1, Smith; 2, Thornton.
Peas—1 and 2, Green.
Potatoes, Round—1, Smith; 2, Higgs.
Ditto, Kidney—1 and 2, Smith.
Turnips, 3—1, Higgs; 2, Green.
Apples, last year's } 1 and 2, Watson.
Ditto, this year's }
Gooseberries—1, Stanley; 2, Green.
Raspberries—1, Smith; 2, Green.
Strawberries—1, Smith; 2, Green.
Currants, White—1 and 2, Higgs.
Ditto, Red—1, Stanley; 2, Green.
Ditto, Black—1, Green; 2, Thornton.
Cherries—1 and 2, Stanley.
Bouquet of Wild Flowers—1, A. Bullers; 2, J. Kemp;
3, E. Clegg.
Best Tray of Vegetables—Higgs.

SPECIAL PRIZES.

Doncaster & Sons, Tray of Vegetables—1, Rev. A. Hill;
2, W. Millington.
Mills' Bros., Window Plants—1, Watson; 2, Higgs.
Eggs—1, Hill; 2, Gower.
Garden Designs—1 and 2, Gower.
Premier Potatoes—A. Smith.
Honey in Comb—1, Cartwright; 2, Gower; 3, Robinson.
Honey Extracted—1, Dolman; 2, Bond; 3, Coville.
Living Bees in Unicomb Hive—Gower.

THE CRICKET CLUB.—Matches played during June:—

June 1.	East Bridgford	85,	Lowdham	44.
" 8.	"	75,	Tithby	34.
" 15.	"	55,	T. L. Birkin & Co.	45.
" 17.	"	108,	Car Colston	25.
" 24.	"	112 for 3 wks,	Nelson's Ltd.	34 for 8 wks.

NATIONAL INSURANCE ACT, 1911.—Our readers are reminded that the Act will come into force on Monday, July 15th, 1912.

Every person in the service of an Employer must be insured, if between the ages of 16 and 70, and must get a contribution card before July 15th from their Friendly Society if they have joined one, or from the Post Office if they have not joined one and present it to their employer on the first pay day after July 15th.

The full benefits of Insurance can only be obtained by joining an approved Society. The approved Societies in East Bridgord are the Nottingham Order of Oddfellows, Secretary, Mr. J. Gregg; the National Deposit Friendly Society, Secretary, Mr. H. Goldston. The Primitive Methodist Society will be approved before July 15th.

Those who join approved Societies *may also* pay for further benefits according to the rules of their Society, but are not obliged to do so.

Do not be hurried in selecting your Society. It is not necessary to join any Society until October 15th, so that you have three months in which to make up your mind, but you should do so as soon as convenient. If you have not joined a Society before July 15th, you should get your contribution card at the Post Office, only filling in your own name and address. But do not become a *Post Office Depositor*. Wait for good advice in selecting a Society to join.

The Rev. H. J. Morton is assisting the Rector until July 21st.

EXTRACTS FROM PARISH REGISTERS.

MARRIAGE.

May 25th. At LOWDHAM, George Walter Guy and Mabel Knight.



EAST BRIDGFORD MAGAZINE.



St. Peter's Church, East Bridgford.

Services.

HOLY COMMUNION:—

On all SUNDAYS (except 1st in Month) and HOLY DAYS at 8 a.m.
and after Morning Prayer on the First Sunday in the Month.

MORNING AND EVENING PRAYER:—

Sundays at 10.45, and 6.30 p.m.

Weekdays at 8 a.m. (Wednesday and Friday at 10), and 6.30 p.m. daily

HOLY BAPTISM:—

Second Sunday in month at 3, or at other Services on due notice.

CHURCHING OF WOMEN:—

Wednesday and Friday at 10, or before any Service on due notice.

SUNDAY SCHOOL:—

At 10 a.m. in the National School.

Children's Service and Catechizing in Church at 2.30.

On July 28th, sermons were preached on behalf of the Home Mission work of the Additional Curates' Society, by the Rev. S. W. Barnes, curate of S. Peter, at Gowts, Lincoln. The collections during the day were devoted to this purpose and amounted to £4 7s. 6½d.

An excursion was arranged on Tuesday, July 9th, for the annual festival of the Bingham branch of the G.F.S. Many others also availed themselves of the opportunity afforded by the special train provided by the G.N. Railway Company, and enjoyed a very pleasant visit to Lincoln. The weather proved fine, and the party were able to visit the Cathedral, the Castle, and other interesting sights of the fine old city.

A fête was arranged on Tuesday, July 23rd, in the garden of The Hall, by the Conservative Association, which was attended by a large number. Unfortunately the heavy rain which fell interfered with the open-air sports, and the evening was spent under the shelter of the marquee, where the Radcliffe Brass Band provided music for dancing. The races were concluded on the following Saturday.

CHURCH RESTORATION FUND.

	£	s.	d.
Acknowledged, April, 1912	598	14	6
Whit Sunday Offerings	5	17	1
Miss Fox	50	0	0
Church Box, June 29th	12	0	
G.F.S.	3	0	
Mr. and Mrs. Turner Lee	5	0	0
Church Box, July 29th	3	6	
Total, August 1912	£660	10	1

The School holidays begin on August 2nd, and the School will re-open on Monday, September 2nd.

Time Table for East Bridgford of Trains to and from Nottingham, for August and September, 1912.

Leave Bingham.	Leave Lowdham.	Arrive Nottingham G.N.R. Victoria.	Arrive Nottingham M.R.	Leave Nottingham G.N.R. Victoria.	Leave Nottingham M.R.	Arrive Bingham.	Arrive Lowdham.
—	6.58	—	7.18	5.25	—	5.48	—
7.30	—	7.54	—	—	6.0	—	6.19
—	7.46	—	8.5	—	6.28	—	6.47
8.20	—	8.45	—	7.15	—	7.38	—
—	8.25	—	8.45	—	7.20	—	7.39
—	8.59	—	9.20	*8.10	—	8.34	—
9.4	—	9.28	—	—	8.35	—	8.54
*9.43	—	10.6	—	9.25	—	9.48	—
9.51	—	10.12	—	*10.24	—	10.47	—
—	10.1	—	10.24	—	11.25	—	11.46
—	11.20	—	11.42	11.50	—	12.13	—
11.59	—	12.23	—	—	12.45 <i>except Sat.</i>	—	1.3
—	1.35 <i>except Sat.</i>	—	1.55	—	1.5	—	1.24
*1.40	—	2.4	—	* 1.50	—	2.13	—
2.1	—	2.25	—	—	2.0	—	2.18
—	2.4	—	2.27	2.8	—	2.26	—
—	2.25	—	2.44	—	2.10 <i>Saturdays</i>	—	2.29
—	3.25 <i>Fridays</i>	—	3.40	2.43	—	3.6	—
*3.30	—	3.54	—	—	2.58	—	3.19
—	4.22	—	4.40	4.12 <i>Saturdays</i>	—	4.27	—
—	4.43	—	5.3	—	4.40	—	4.59
4.54	—	5.18	—	* 5.0	—	5.23	—
5.2 <i>Saturdays</i>	—	5.25	—	—	6.10	—	6.29
—	6.36	—	6.55	6.15	—	6.38	—
6.44	—	7.8	—	—	6.43	—	7.4
—	7.49	—	8.10	—	7.45	—	8.4
8.36	—	9.3	—	7.40	—	8.6	—
*9.2	—	9.26	—	8.47	—	9.16	—
9.10	—	9.34	—	—	9.20	—	9.39
—	9.42 <i>Saturday</i>	—	10.2	9.55	—	10.19	—
—	9.55 <i>except Saturday</i>	—	10.15	—	11.25 <i>Thur. & Sat.</i>	—	11.46
—	10.15 <i>Saturday</i>	—	10.35	11.0 <i>Wed. and Sat.</i>	—	11.24	—

SUNDAYS.

9.15	—	9.41	—	8.27	—	8.52	—
—	12.41	—	1.0	—	10.7	—	10.26
3.3	—	3.27	—	11.40	—	12.4	—
4.55	—	5.18	—	2.10	—	2.33	—
—	6.48	—	7.10	—	2.50	—	3.9
8.35	—	9.0	—	6.3	—	6.28	—
—	8.12	—	8.33	—	8.10	—	8.20
—	—	—	—	9.57	—	10.20	—

*Newark trains.

N.B.—All the G.N.R. trains stop at London Road (High Level Station) as well as at the Victoria Station.



EAST BRIDGFORD MAGAZINE.



St. Peter's Church, East Bridgford.

SerVICES.

HOLY COMMUNION :—

On all SUNDAYS (except 1st in Month) and HOLY DAYS at 8 a.m.
and after Morning Prayer on the First Sunday in the Month.

MORNING AND EVENING PRAYER :—

Sundays at 10.45, and 6.30 p.m.

Weekdays at 8 a.m. (Wednesday and Friday at 10), and 6.30 p.m. daily.

HOLY BAPTISM :—

Second Sunday in month at 3, or at other Services on due notice.

CHURCHING OF WOMEN :—

Wednesday and Friday at 10, or before any Service on due notice.

SUNDAY SCHOOL :—

At 10 a.m. in the National School.

Children's Service and Catechizing in Church at 2.30.

The whole month of August has been one of continued wet and unsettled weather, and indeed at the time of writing the prospects of getting in the harvest in fair condition are looking gloomy. The Trent has been higher than has been known for many years at this season. Our own parish fortunately lies high and out of danger of floods, but in many parts of the Midlands we hear of hay still lying out in flooded fields, and peas and barley are suffering from the continual rain.

In former days a wet summer often brought disaster in other ways, so that "plague, pestilence and famine," which are linked together in our Litany, were apt to follow in its train of calamity. No doubt the greater cleanliness and knowledge of sanitary precautions is a great protection in the present day, but the flooding out of refuse pits, and the contamination of wells, by surface water running into them, are real dangers to be carefully considered. East Bridgford is sadly behind the times in such matters as drainage and water supply, and healthy as it otherwise is, such matters should be carefully watched.

Two hundred and sixty-six years ago, Nottingham goose fair in October could not be held, on account of plague that had raged in many villages of the neighbourhood. In our own village there were visitations of the plague in 1604 and 1637, and the registers record 50 deaths in the former year and 85 in the latter, from this sad cause.

When the plague was so hot in a village the neighbours shut the roads against them, and the people in it set out a "plague stone," a stone hollowed out like a chicken trough, where such as would purchase victual from outside might lay their money under water, and place a paper of their wants, and depart. Those that would sell came later—what will a man not do for gain?—snatch the money forth, and leave in exchange such goods as their conscience reckoned fair value. (R. KIPLING, in "REWARDS AND FAIRIES.")

Perhaps a plague-stone was set up on the road to Kneeton in those terrible days in 1637. It would lie in a ditch afterwards, for no one would care to touch it until its use had been forgotten; and then at length Brown, or some other careful man who would not waste anything, would turn it to some use. At any rate you may see in Brown's Lane just such a stone, turned upside down and used as a step for a stile, until the bottom of it has been worn through by constant treading. It may be the very plague-stone of those old days, still warning us in mute appeal of the dangers of insanitary conditions.

Many thanks to those who kindly subscribed to the Choir Boys' excursion to Skegness, on August 20th. We had one of the few fairly fine days, with some sunshine and only one thunderstorm in the afternoon, and had a very pleasant excursion.

THE TEMPERANCE HALL.—The Committee of the Temperance Hall have accepted the tender of Mr. Harding of Newark, to clean and re-decorate the Hall for the sum of £27 and the work is now in hand. It is hoped to raise the greater part of the amount required by a Jumble Sale in September, for which offers of old clothes and Jumble will be gratefully accepted and also by a tea and concert later on in the winter.

The Committee wish to draw attention to the fact that, when building the Temperance Hall, £200 was raised on mortgage and that after paying the interest on the same, the receipts only just balance the working expenses and the Committee are therefore obliged to make a general appeal when any large outlay is necessary, they thank their supporters most heartily for having enabled them so thoroughly to modernize the arrangements for heating and ventilating the Hall and would ask for further help in their schemes for raising the necessary funds for the completion of the work.

C. ETHEL CARTWRIGHT,

Hon. Treasurer, Temperance Hall Restoration.

A Missionary Exhibition is to be opened at the Empress Rink, King Edward Street, Nottingham, from the 9th to 26th of October, by the Church Missionary Society. Tickets may be obtained on application to the Rector, at the following prices:—Season tickets 2/6; Opening Day, 2 to 6 p.m., 2/-; Day tickets, 2 to 6 p.m., 1/-; Evening tickets, 6 to 10 p.m., 6d.; Children under 12, half-price. Special tickets at cheaper rates for Bible Classes, Sunday Schools, etc. Vouchers are attached to the tickets for cheap railway fares. A refreshment department will provide tea or supper. There will be an African Village on view (3d.), and lectures and side exhibits.

CRICKET CLUB.—Though the rainy season has interfered with all cricket, the following are the results of matches that have been played since the beginning of the season;—

May	11	East Bridgford	115	Bingham 2nd	68
"	25	"		Shelford	45
June	1	"	85	Lowdham	44
"	8	"	75	Tithby	34
"	15	"	55	T. I. Birkin's & Co.	45
"	17	"	108	Car Colston	25
"	24	"	112	Nelsons' Ltd.	..	34 for 8 wks.	
"	29	"	58	Orston	51
July	6	"	32	Lowdham	17
"	18	"	32	Notts Unity	39
"	20	"	53	Bingham	36
Aug.	3	"	140	C. W. Darwin's XI.	29
"	6	"	48 for 4 wks.	P. Forrest's XI.	113
"	15	"	61 for 8 wks.	County Asylum	106
"	17	"	28	Gunthorpe	54

Owing to an outbreak of Measles, the Day School and Sunday Schools are closed till further notice.

Time Table for East Bridgford of Trains to and from Nottingham, for September, 1912.

Leave		Arrive Nottingham		Leave Nottingham.		Arrive	
Bingham.	Lowdham.	G.N.R.	M.R.	G.N.R.	M.R.	Bingham.	Lowdham.
—	6.58	—	7.18	5.25	—	5.48	—
7.30	—	7.54	—	—	6.0	—	6.19
—	7.46	—	8.5	—	6.28	—	6.47
8.20	—	8.45	—	7.15	—	7.38	—
—	8.25	—	8.45	—	7.20	—	7.39
—	8.59	—	9.20	*8.10	—	8.34	—
9.4	—	9.28	—	—	8.35	—	8.54
*9.43	—	10.6	—	9.25	—	9.48	—
9.51	—	10.12	—	*10.24	—	10.47	—
—	10.1	—	10.24	—	11.25	—	11.46
—	11.20	—	11.42	11.50	—	12.13	—
11.59	—	12.23	—	—	12.45 <i>except Sat.</i>	—	1.3
—	1.35 <i>except Sat.</i>	—	1.55	—	1.5	—	1.24
*1.40	—	2.4	—	* 1.50	—	2.13	—
2.1	—	2.25	—	—	2.0	—	2.18
—	2.4	—	2.27	2.8	—	2.26	—
—	2.25	—	2.44	—	2.10 <i>Saturdays</i>	—	2.29
—	3.25 <i>Fridays</i>	—	3.40	2.43	—	3.6	—
*3.30	—	5.54	—	—	2.58	—	3.19
—	4.22	—	4.40	4.12 <i>Saturdays</i>	—	4.27	—
—	4.43	—	5.3	—	4.40	—	4.59
4.54	—	5.18	—	* 5.0	—	5.23	—
5.2 <i>Saturdays</i>	—	5.25	—	—	6.10	—	6.29
—	6.36	—	6.55	6.15	—	6.38	—
6.44	—	7.8	—	—	6.43	—	7.4
—	7.49	—	8.10	—	7.45	—	8.4
8.36	—	9.3	—	7.40	—	8.6	—
*9.2	—	9.26	—	8.47	—	9.16	—
9.10	—	9.34	—	—	9.20	—	9.39
—	9.42 <i>Saturday</i>	—	10.2	9.55	—	10.19	—
—	9.55 <i>except Saturday</i>	—	10.15	—	11.25 <i>Thur. & Sat.</i>	—	11.46
—	10.15 <i>Saturday</i>	—	10.35	11.0 <i>Wed. and Sat.</i>	—	11.24	—

SUNDAYS.

9.15	—	9.41	—	8.27	—	8.52	—
—	12.41	—	1.0	—	10.7	—	10.26
3.3	—	3.27	—	11.40	—	12.4	—
4.55	—	5.18	—	2.10	—	2.33	—
—	6.48	—	7.10	—	2.50	—	3.9
8.35	—	9.0	—	6.3	—	6.28	—
—	8.12	—	8.33	—	8.10	—	8.29
—	—	—	—	9.57	—	10.20	—

*Newark trains.

N.B.—All the G.N.R trains stop at London Road (High Level Station) as well as at the Victoria Station.

EAST BRIDGFORD MAGAZINE.



St. Peter's Church, East Bridgford.

Services.

HOLY COMMUNION :—

On all SUNDAYS (except 1st in Month) and HOLY DAYS at 8 a.m. and after Morning Prayer on the First Sunday in the Month.

MORNING AND EVENING PRAYER :—

Sundays at 10.45, and 6.30 p.m.

Weekdays at 8 a.m. (Wednesday and Friday at 10), and 6.30 p.m. daily.

HOLY BAPTISM :—

Second Sunday in month at 3, or at other Services on due notice.

CHURCHING OF WOMEN :—

Wednesday and Friday at 10, or before any Service on due notice.

SUNDAY SCHOOL :—

At 10 a.m. in the National School.

Children's Service and Catechizing in Church at 2.30.

We propose to hold our Harvest Thanksgiving service on Thursday, Oct. 10th at 7.30 p.m. Though August was such a wet month that it filled many of us with gloomy forebodings, and produced records of disaster from floods in many places, yet September has brought a continuous spell of beautiful weather. It has been bright and cool, so that the anticipated sprouting of grain has been checked, and the harvest operations have been completed under favourable conditions. Once again we come to thank God for His annual gift of the fruits of the earth, once again we are reminded of His promise that seed time and Harvest shall not cease while the earth remaineth. The very fears that sometimes fill our thoughts should make us the more ready to fulfil our continual duty of thankfulness.

The Harvest Thankofferings on Thursday will be for the Church Restoration fund; and on the Sunday following, when the Holy Communion will be celebrated at 8 a.m., for the Sunday School Fund.

The outbreak of Measles in the village appears to have been checked, and the Schools were allowed to re-open on Wednesday, September 25th. We shall not be able to have the usual week's intermission of work for potato-gathering this year. Let us hope that the extra three weeks' holiday, in such beautiful weather as it has been, will have given health to both children and teachers, and that they all will set to work with renewed industry, to make up for the lost school time.

Our readers are reminded of the Church Missionary Society's exhibition, to be opened at the Empress Rink, King Edward Street, Nottingham, from October 9th to 26th. The Rector will be pleased to obtain tickets, as announced in last month's Magazine, at 1/- from 2 to 6 p.m. (except on the opening day), and 6d. from 6 to 10 p.m. each day. Special tickets for classes 1/- admitting 6 under 14.

The British and Foreign Bible Society's annual meeting will be held at the Temperance Hall on Friday, October 25th.

At a Jumble Sale held on Saturday evening, September 21st, the large sum of £17 5s. was realized for the expenses of painting and renovating the Temperance Hall which amount to about £27.

CRICKET CLUB.—The season has been a very successful one, except that the weather interfered with some of the matches arranged. Only three out of seventeen were lost and three unfinished, so that the Club has been victorious in eleven matches.

It is satisfactory to find that younger members are coming on, and that fielding has in several instances been very good. Only two matches have been played since a list was printed last month :—

Aug. 31st, East Bridgford 47, Tithby 71; Sept 7th, East Bridgford 116, Orston 17.

The King Edward Club will re-open for the season on Monday, October 7th. The subscription is 2/- for the first quarter, and 1/6 for the second quarter, or if paid at first, 3/- for the season. New members will be welcomed.

The Choral Society held its general meeting in the School room on Tuesday, September 24th, at 7.30 p.m., the Rector being in the chair as President. The accounts of last year were passed, shewing a deficit of £1 13s. 6d.

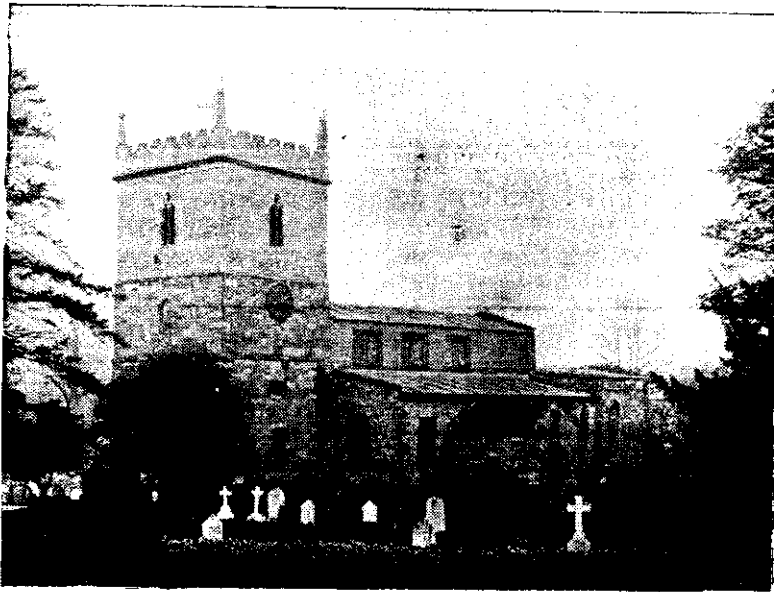
It was decided to hold fortnightly meetings, on Tuesdays. The first practice will be held in the Temperance Hall on Tuesday, October 15th at 7.30 p.m., when all who are desirous of taking part in the Society's practices are requested to attend, in order that the members may be encouraged by a good beginning.

EXTRACTS FROM PARISH REGISTER.
BAPTISMS.

August 29th. Gerald Higgs, son of Maurice and Helen Walker.
September 8th. Lois May, daughter of Arthur and Annie Ellis.



EAST BRIDGFORD MAGAZINE.



St. Peter's Church, East Bridgford.

Services.

HOLY COMMUNION :—

On all SUNDAYS (except 1st in Month) and HOLY DAYS at 8 a.m. and after Morning Prayer on the First Sunday in the Month.

MORNING AND EVENING PRAYER :—

Sundays at 10.45, and 6.30 p.m.

Weekdays at 8 a.m. (Wednesday and Friday at 10), and 6.30 p.m. daily.

HOLY BAPTISM :—

Second Sunday in month at 3, or at other Services on due notice.

CHURCHING OF WOMEN :—

Wednesday and Friday at 10, or before any Service on due notice.

SUNDAY SCHOOL :—

At 10 a.m. in the National School.

Children's Service and Catechizing in Church at 2.30.

The Harvest Thanksgiving Service was held in Church on Thursday, Oct. 10th, the preacher being the Rev. A. Rowley, Vicar of Kneeton. Harvest hymns, which are always great favourites, were very heartily sung. The Canticles were sung to a setting by Bunnett, which was of course new to the congregation. Though we always aim at providing music which can be joined in by all, and therefore do not usually attempt set services, yet this very bright and tuneful 'service' will so soon be picked up by the congregation that they are sure to enjoy it when it has been heard a few times. The Harvest offerings, of £3 12s. 5d., were for the Church Restoration Fund. The Congregation on Thursday evening was not as large as it should have been, but in the evening of the Sunday following the Church was crammed to overflowing, and the service continued the thought of Thanksgiving to God for His Harvest gifts. The Rector preached from Ps. xvi 7, 8 pointing out that the experience of this year's harvest taught us to be thankful for God's warnings as well as for God's blessings. The offerings on Sunday £4 1s. 2d. were for the Sunday School Fund.

On Saturday, October 26th, the Rector invited a party of Sunday School Teachers and children to visit the very interesting Missionary Exhibition which has been held in Nottingham from October 9th to 26th.

The Choral Society began its fortnightly practices on Tuesday, Oct. 15th. It has been decided to get up part of Handel's Oratorio "Judas Maccabæus." Mr. Osborne, of Thurgaton Priory, has kindly undertaken the office of Conductor. Meetings will be held on Tuesdays, November 12th and 26th, December 3rd and 17th.

The Total Abstinence Society announces two meetings to be held this month, on Tuesday, November 5th and Tuesday, November 18th. The speakers at these meetings have not yet been arranged.

The members of King Edward Club held their general meeting on October 19th, the chair being occupied by the president, G. Cartwright, Esq., who complimented the members on a successful season in the past year. The accounts presented by the Hon. Secretary, Mr. E. E. Coville, showed an income of £14 0s. 10d., against an expenditure of £13 12s. 8d., thus leaving a balance of 8s. 2d. on the year's working.

The Committee was elected for the following season : Messrs. F. Sharp, E. Millington, A. Ellis, sen., H. Hoyles, A. Shipman, J. Allwood, P. Forrest, J. T. Huskinson.

The annual meeting of the British and Foreign Bible Society was held on Friday, October 25th, in the Temperance Hall. The Rector took the chair and the speaker was the Rev. J. A. Cooper, well known as the District Secretary of the Society. The annual report gives the amount collected at East Bridgford for 1911 as £10 4s. The Secretary, Miss M. Clough, provided a report of the present year.

CHURCH RESTORATION FUND.

	£	s.	d.
Acknowledged, August 1912	660	10	1
Miss E. Weatherell		12	6
Church Box, Sept. 30th		2	5
Mr. E. E. Coville	1	0	0
Harvest Thankofferings, October 10th	3	12	5
Miss M. E. Robinson (Second donation)	2	10	0
Sale of Work, etc.	1	17	0
Total, November, 1912	£670	4	5

May we appeal to those who have not yet made their contribution to this Fund, to help in raising the total to £700, the half of what is needed, by the end of the year 1912.

EXTRACT FROM PARISH REGISTER.

BAPTISM.

October 4th. Florence Grace, daughter of Ernest and Lizzie Pykett.



Time Table for East Bridgford of Trains to and from Nottingham, for November, 1912.

Leave		Arrive Nottingham		Leave Nottingham.		Arrive	
Bingham.	Lowdham.	G.N.R. Victoria.	M.R.	G.N.R. Victoria.	M.R.	Bingham.	Lowdham.
—	6.58	—	7.18	5.25	—	5.48	—
7.30	—	7.54	—	—	6.0	—	6.19
—	7.46	—	8.5	—	6.28	—	6.47
8.20	—	8.45	—	7.15	—	7.38	—
—	8.25	—	8.45	—	7.20	—	7.39
—	8.59	—	9.20	*8.10	—	8.34	—
9.4	—	9.28	—	—	8.32	—	8.51
*9.43	—	10.6	—	9.25	—	9.48	—
9.51	—	10.12	—	*10.25	—	10.47	—
—	9.56	—	10.22	—	11.25	—	11.46
—	11.20	—	11.42	11.50	—	12.13	—
11.59	—	12.23	—	—	12.45 <i>except Sat.</i>	—	1.3
—	1.35 <i>except Sat.</i>	—	1.55	—	1.5	—	1.24
*1.40	—	2.4	—	*1.50	—	2.13	—
2.1	—	2.25	—	—	2.0	—	2.18
—	2.4	—	2.27	2.8	—	2.26	—
—	2.27	—	2.47	2.43	—	3.6	—
—	3.25 <i>Fridays</i>	—	3.40	—	2.58	—	3.19
*3.30	—	3.54	—	4.12 <i>Saturdays</i>	—	4.33	—
—	4.22	—	4.40	—	4.40	—	4.59
—	4.42	—	5.3	*5.0	—	5.23	—
4.54	—	5.18	—	—	6.10	—	6.29
5.2 <i>Saturdays</i>	—	5.25	—	6.15	—	6.38	—
—	6.36	—	6.55	—	6.43	—	7.4
6.44	—	7.8	—	—	7.45	—	8.4
—	7.49	—	8.10	7.40	—	8.6	—
*9.2	—	9.26	—	8.47	—	9.13	—
9.10	—	9.34	—	—	9.20	—	9.38
—	9.42 <i>Saturday</i>	—	10.2	9.55	—	10.19	—
—	10.5 <i>except Saturday</i>	—	10.25	—	11.15 <i>Thur. & Sat.</i>	—	11.36
—	10.15 <i>Saturday</i>	—	10.35	11.0 <i>Wed. and Sat.</i>	—	11.24	—

SUNDAYS.

—	12.41	—	1.0	—	10.7	—	10.26
3.3	—	3.27	—	11.40	—	12.4	—
4.55	—	5.18	—	2.10	—	2.33	—
—	6.48	—	7.10	6.3	—	6.28	—
8.35	—	9.0	—	—	8.10	—	8.29
—	—	—	—	9.58	—	10.20	—

*Newark trains.

N.B.— All the G.N.R. trains stop at London Road (High Level Station) as well as at the Victoria Station.

EAST BRIDGFORD MAGAZINE.



St. Peter's Church, East Bridgford.

Services.

HOLY COMMUNION:—

On all SUNDAYS (except 1st in Month) and HOLY DAYS at 8 a.m.
and after Morning Prayer on the First Sunday in the Month.

MORNING AND EVENING PRAYER:—

Sundays at 10.45, and 6.30 p.m.

Weekdays at 8 a.m. (Wednesday and Friday at 10), and 6.30 p.m. daily.

HOLY BAPTISM:—

Second Sunday in month at 3, or at other Services on due notice.

CHURCHING OF WOMEN:—

Wednesday and Friday at 10, or before any Service on due notice.

SUNDAY SCHOOL:—

At 10 a.m. in the National School.

Children's Service and Catechizing in Church at 2.30.

OUR CHRISTMAS GREETINGS TO ALL.

On Christmas Day, Wednesday, December 25th, there will be celebrations of the Holy Communion at 8 and at midday, Mattins at 10.45, Evensong at 7 p.m. The Christmas Day offerings will be given to the Church Restoration Fund.

On Sunday, Dec. 29th, the celebration of the Holy Communion will be at 7 a.m.; on the Feast of Circumcision, Jan. 1st, at 8 a.m., and on Jan. 5th, the first Sunday in the new year, at 8 and at midday.

During Advent, there will be on Wednesday evenings, Dec. 4th and 18th, a short address at the evening service which will be at 7 o'clock.

The Annual Day of Intercession for Foreign Missions was kept on Friday, Nov. 29th, the eve of S. Andrew's day.

A lecture will be given on behalf of the Foreign Missions of S.P.G., illustrated by lantern, on Wednesday evening, Dec. 11th, at 7.30. The speaker will be the Rev. G. F. G. Wintour, late of Burmah. There will be a collection in aid of the Missionary work of the Society for the Propagation of the Gospel in Foreign Parts.

THE PIG CLUB for East Bridgford and District, which was started in Oct., 1911, has now completed its first year satisfactorily, with 28 members subscribing. During the year the loss of five pigs has been made good to the members, rather a heavy burden for a young society, but the year's accounts show a balance on the right side. The President is J. W. Woodsend, Esq.; Vice-President, W. A. Hodges, Esq., J.P.; Treasurer, Mr. T. E. Jesson; Secretary, Mr. W. Swingler; and there is a committee of management. The payments are 1/- entrance for each member; for each breeding pig, 2/6 entrance and 1/- a quarter, and for each feeding pig 1/- entrance and 6d. a quarter.

On Monday, November 18th, a whist drive and dance was arranged at the Temperance Hall, in aid of the funds of the Pig Club.

The Total Abstinence Society have arranged a meeting on Dec. 3rd, at which John Lewin, Esq., J.P., of Netherfield, is the speaker.

The first meeting after Christmas will be held on January 14th, 1913.

On Nov. 9th a afternoon meeting was held, by invitation, in the Temperance Hall, to hear an address by Chancellor P. V. Smith on the Religious aspect of the Welsh Disestablishment Bill.

He gave first a historical sketch, showing the continuity of the Church as one body. In 1115, the Bishops and Clergy of Wales became part of the province of Canterbury, 170 years before the existence of an English Parliament, and before the incorporation of Wales into the Kingdom. He emphasized the point that the Bill actually deprives the Church in Wales of the right to meet for counsel in Convocation, and it was unjust and cruel to force asunder the Christian body so long united, more especially as both Congregationalists and Baptists of Wales have rejected all proposals of separation from their brethren in England.

Next he described the utter falseness of the plea that the Bill promoted Religious equality. The Church claims no privilege which she would not in justice see extended to others, except that which is inevitable from her long history and close unity with the national life. To end this union would mean an irreligious State, and would be a very undemocratic action, for it would deprive everyone of his right to the ministrations of a national church, which he now has without having to pay for it.

Then as to Disendowment: the old arguments that Church property is National property because the Church is the National Church, or that tithe is a tax, or that Clergy are paid by the State, have been so completely proved to be false, that one can only wonder that there are still people who repeat the falsehoods, and people who believe in them. The final atrocity of the Bill is in the objects to which it is proposed to apply the funds which are to be taken away from the Church in Wales. The money which has been given by individuals to maintain Christian Religion, is to be taken away from the service of God to save the rates. The funds which maintain a clergyman in many a poor country village are to be used to keep up museums in the towns:— "Why rob the poor to build houses for stuffed birds"? If the nation sold the pictures in the National Gallery to raise money to build a new "Dreadnought," the world would say England was a very inartistic country. If the nation alienates the money given and well used for God's service, then not only in the eyes of all Christendom, but of Mohammedans and Heathen, England will stand before the world as a godless country.

The resolution proposed, which was seconded by Mr. Cartwright, and carried unanimously, will commend itself to all who really take the trouble to understand the true bearing and consequences of the Bill now before Parliament: "That the proposed disestablishment and disendowment of the Church in Wales and Monmouthshire is unjust, irreligious, and opposed to the best interests of the country, and ought to be resisted by all God-fearing citizens."

Our New Year's Tea will be held on Wednesday, Jan. 1st, 1913. Tea at 5 and 5.45, at 6d. a head. Parents with children under 12 *in their charge*, can obtain a family ticket for 1/6. Children not in charge of their parents only admitted at the second tea. An Entertainment will be arranged to follow at 7 p.m.

EXTRACT FROM PARISH REGISTER.

BURIAL.

November 23rd. Harry Waller Hoyles, aged 20 years.

Time Table for East Bridgford of Trains to and from Nottingham, for December, 1912.

Leave		Arrive Nottingham		Leave Nottingham.		Arrive	
Bingham.	Lowdham.	G.N.R.	M.R.	G.N.R.	M.R.	Bingham.	Lowdham.
—	6.58	—	7.18	5.25	—	5.48	—
7.30	—	7.54	—	—	6.0	—	6.19
—	7.46	—	8.5	—	6.28	—	6.47
8.20	—	8.45	—	7.15	—	7.38	—
—	8.25	—	8.45	—	7.20	—	7.39
—	8.59	—	9.20	*8.10	—	8.34	—
9.4	—	9.28	—	—	8.32	—	8.51
*9.43	—	10.6	—	9.25	—	9.48	—
9.51	—	10.12	—	*10.25	—	10.47	—
—	9.56	—	10.22	—	11.25	—	11.46
—	11.20	—	11.42	11.50	—	12.13	—
11.50	—	12.23	—	—	12.45 <i>except Sat.</i>	—	1.3
—	1.35 <i>except Sat.</i>	—	1.55	—	1.5	—	1.24
*1.40	—	2.4	—	* 1.50	—	2.13	—
2.1	—	2.25	—	—	2.0	—	2.18
—	2.4	—	2.27	2.8	—	2.26	—
—	2.27	—	2.47	2.43	—	3.6	—
—	3.25 <i>Fridays</i>	—	3.40	—	2.58	—	3.19
*3.30	—	3.54	—	4.12 <i>Saturdays</i>	—	4.33	—
—	4.22	—	4.40	—	4.40	—	4.59
—	4.42	—	5.3	* 5.0	—	5.23	—
4.54	—	5.18	—	—	6.10	—	6.29
5.2 <i>Saturdays</i>	—	5.25	—	6.15	—	6.38	—
—	6.36	—	6.55	—	6.43	—	7.4
6.44	—	7.8	—	—	7.45	—	8.4
—	7.49	—	8.10	7.40	—	8.6	—
*9.2	—	9.26	—	8.47	—	9.13	—
9.10	—	9.34	—	—	9.20	—	9.38
—	9.42 <i>Saturday</i>	10.2	—	9.55	—	10.19	—
—	10.5 <i>except Saturday</i>	10.25	—	—	11.15 <i>Thur. & Sat.</i>	—	11.36
—	10.15 <i>Saturday</i>	10.35	—	11.0 <i>Wed. and Sat.</i>	—	11.24	—

SUNDAYS.

—	12.41	—	1.0	—	10.7	—	10.26
3.3	—	3.27	—	11.40	—	12.4	—
4.55	—	5.18	—	2.10	—	2.33	—
—	6.48	—	7.10	6.3	—	6.28	—
8.35	—	9.0	—	—	8.10	—	8.29
—	—	—	—	9.58	—	10.20	—

*Newark trains.

N.B.— All the G.N.R trains stop at London Road (High Level Station) as well as at the Victoria Station.