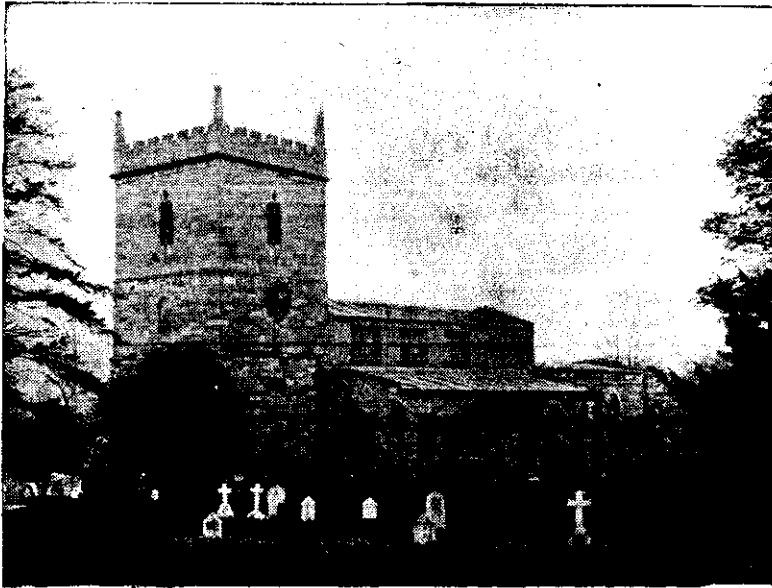


EAST BRIDGFORD MAGAZINE.



St. Peter's Church, East Bridgford.

Services.

HOLY COMMUNION:—

On all SUNDAYS (except 1st in Month) and HOLY DAYS at 8 a.m. and after Morning Prayer on the First Sunday in the Month.

MORNING AND EVENING PRAYER:—

Sundays at 10.45, and 6.30 p.m.

Weekdays at 8 a.m. (Wednesday and Friday at 10), and 6.30 p.m. daily.

HOLY BAPTISM:—

Second Sunday in month at 3, or at other Services on due notice.

CHURCHING OF WOMEN:—

Wednesday and Friday at 10, or before any Service on due notice.

SUNDAY SCHOOL:—

At 10 a.m. in the National School.

Children's Service and Catechizing in Church at 2.30.

A HAPPY NEW YEAR to all our readers. We begin this new volume of the East Bridgford Magazine, its fifteenth year of existence, and we enter upon a new year of our lives, with a prayer that God will bless our going out and our coming in, bless us in sowing and reaping, in the basket and the store; and that we may serve and please Him better than we have done before, being mindful of His mercies and shewing forth His praise in our lives, and doing the work He calls us to do with thankfulness to the Giver of all.

There is one thing especially that lies before us, the completion of the Restoration of the Church. Let us put our hand to that in earnest, and see that the year does not go by without a great effort to accomplish it. We have now got considerably more than half what is required, and we may be sure that God will prosper the work when we show that we are sincere in our endeavours to do it to his glory.

CHURCH RESTORATION FUND.

	£	s.	d.
Acknowledged, Nov., 1912	670	4	5
New Year's Tea, Jan., 1912 (omitted above)	3	10	0
Mr. C. Allwood	3	3	0
A Parishioner	5	0	0
Church box, Nov.—Dec.		8	5
Christmas Day Offerings	105	10	5
Total, December, 1912	£787	16	3

The services at Church on Christmas Day were well attended, especially the Celebration of the Holy Eucharist at 8 a.m.; but the uninviting weather in the evening seemed to keep a good many away who should have been there. The Choir sang the anthem "O Zion that bringeth good tidings" (Is. xl. 9.) by Stainer, which effectively introduces two verses from the beautiful Hymn 56. Four Christmas Carols were sung, from which the Rector drew four lessons for his sermon. The Christmas Offerings at the services during the day were for the Church Restoration Fund, and amounted to £105 10s. 5d. This is surely one of the best ways of giving, and if all were to bring their gifts to the altar as a real sacrifice to God, we should soon have the satisfaction of seeing the Church restored.

The Rev. Harold Standish has kindly been helping the Rector at the Advent and Christmas services.

Easter falls very early this year, on March 23rd, and Lent begins on Ash Wednesday, February 5th.

The Bishop of Derby will hold a Confirmation at East Bridgford on Monday, March 3rd; and the Rector will be glad to know the names of those who desire to be confirmed, as soon as possible, in order that he may arrange for instruction, before Jan. 18th.

Sunday, Jan. 26th, is appointed as Hospital Sunday, when collections will be made for the Nottingham Hospitals.

A successful Tea and Entertainment were arranged in the Temperance Hall on Wednesday, Dec. 18th, in aid of the funds for decorating the Temperance Hall, the accounts of which are given below. Recitations and songs were given, and a singing competition was held for girls, won by E. Crossland and A. Blagg, and for youths over 16 won by S. Richardson and C. Smith. A play entitled "A Lady Reader" was performed.

TEMPERANCE HALL.

	£	s.	d.		£	s.	d.
Balance in Hand	1	17	8	W. S. Heading for decoration	27	2	0
Proceeds of Jumble Sale	17	5	0				
Ditto		7	6				
Donation, Rev. A D. Hill		5	0				
Tea and Concert	6	10	0				
Balance due to Treasurer	16	10					
	£27	2	0		£27	2	0

On Sunday evening, Dec. 15th, the sum of £3 18s. 3d. was collected in aid of the funds of the Central Church Defence Committee, which is working hard to spread a true understanding of the attack which is being made upon the Church in Wales.

Dramatic Performances will be given in the Temperance Hall on Monday, Jan. 13th, at 2.30 and 7.30, by Captain P. Jeffcock and friends, in aid of the funds of the East Bridgford Boy Scouts and the District Nurse. The titles of the plays are, "Behind the footlights," "Packing up," and "The Peacemaker." Tickets, to be obtained from Mrs. C. H. Duff, 3/- and 1/- for the afternoon performance, and 2/- and 6d. for the evening performance.

FOREIGN, MISSIONS, S.P.G.—In consequence of the illness of the Lecturer, the Rev. G. F. G. Wintour, the meeting announced for Dec. 11th had to be put off. The following are the amounts sent up for 1912:—to the General Fund, Collections in Church, £7 3s. 11d., Subscriptions (collected by Mrs.

Case) £7 6s. 3d., Mothers' Meeting, 8/6, Special donation for Western Canada, £5 ; total £19 18s. 8d. Friday, Nov. 29th, the eve of S. Andrew's Day, was observed as a day of Intercession for Foreign Missions.

The friends of the late Mrs. H. Millington desire to express their thanks for the kind sympathy that has been shown for them in their bereavement.

EXTRACTS FROM PARISH REGISTERS.

MARRIAGE.

December 16th, 1912. William Henry Foster and Elsie Ann Manchester.

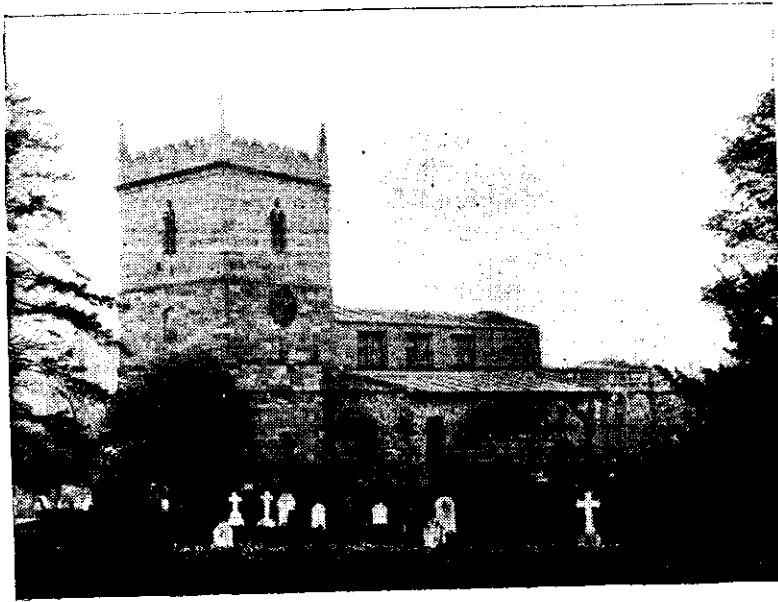
BURIALS.

December 14th. Rebecca Jane Millington, aged 57 years.

„ 30th. John Barnes, aged 57 years.



EAST BRIDGFORD MAGAZINE.



St. Peter's Church, East Bridgford.

Services.

HOLY COMMUNION:—

On all SUNDAYS (except 1st in Month) and HOLY DAYS at 8 a.m.
and after Morning Prayer on the First Sunday in the Month.

MORNING AND EVENING PRAYER:—

Sundays at 10.45, and 6.30 p.m.

Weekdays at 8 a.m. (Wednesday and Friday at 10), and 6.30 p.m. daily.

HOLY BAPTISM:—

Second Sunday in month at 3, or at other Services on due notice.

CHURCHING OF WOMEN:—

Wednesday and Friday at 10, or before any Service on due notice.

SUNDAY SCHOOL:—

At 10 a.m. in the National School.

Children's Service and Catechizing in Church at 2.30.

The New Year's Tea took place on Wednesday, January 1st, and was attended by nearly 260 parishioners and friends. Tea tables were provided and presided over by Mrs. Hill, Mrs. Hodges, Mrs. Turner, Mrs. Weatherell, Mrs. Beckwith, Mrs. Woodsend, Miss Fox, Miss Barker and Mrs. Field.

At 7 p.m., an entertainment was given, at which Miss Jesson gave a performance on the piano, Mrs. Cartwright and Miss Fox on the cello and piano, and songs were given by Miss Beckwith, Miss M. Wilkinson, Miss E. Bateman, and Mr. H. Hodges. Performances on the handbells by the Rector and Messrs. A. Dent, A. Shipman and A. E. Manchester. The Rector provided a Lantern Exhibition consisting of "Angel's Christmas," and scenes on the Riviera and humorous slides.

The proceeds of the Tea, etc., make an addition of £2 10s. 6d. to the Church Restoration Fund.

The Dramatic Performances given on Monday, January 13th, at 2.30 and 7.30, by Capt. Jeffcock and a company of Amateurs resulted in a contribution to the District Nurse Fund and East Bridgford Boy Scouts. The programme consisted of three pieces, "Behind the footlights," "Packing up" and "The Peacemaker," which were very cleverly performed.

HOME MISSIONS.—On Monday, January 20th, the Rev. F. C. Pheasant, organizing secretary of the Additional Curates' Society (A.C.S.) gave a lecture on the work of the Society at the Temperance Hall, which was well attended, the collection amounting to £2 12s. 6d. In former years the subject has usually been the Society's work among the crowded population of some great city, but on this occasion the lantern illustrations showed the scenes of its ministrations amid the semi-tropical vegetation and rocky coasts of the remote and dangerous Islands of Scilly, about 25 miles off the coast of Cornwall. Here the Society provides one of the three curates who serve the three churches and three unconsecrated buildings, in which the population of 2,000 worship on these islands.

The members of the Mothers' Union, who were invited to bring their husbands, together with the members of the Mother's Meeting, were entertained at tea in the Rectory on Tuesday, January 7th. Miss Adams, of Mansfield, gave an address on "Life's difficulties and life's encouragements."

A Confirmation will be held in East Bridgford Church by the Lord Bishop of Derby, on Monday, March 3rd, at 3 p.m.

Ash Wednesday, the first day of Lent, is on February 5th. Services;—Holy Communion 8 a.m. Morning Prayer 11 a.m. Evening 7.30 p.m.

A series of Special Lantern Services will be held each Thursday evening at 7 o'clock. As the evenings get lighter it may be found necessary to hold the services a little later.

The general subject which we take this year is "Earth's many voices," a lesson of *Worship*, based on the familiar words of the Te Deum.

- | | |
|-----------------|----------------------------|
| 1—February 6th. | The voice of the Martyrs. |
| 2— " 13th. | The voice of the Church. |
| 3— " 20th. | The voice of Ourselves. |
| 4— " 27th. | The voice of the Earth. |
| 5—March 6th. | The voice of the Angels. |
| 6— " 13th. | The voice of the Apostles. |

and on Good Friday, March 21st. The way of grief.

It is because we think these services have been appreciated in former years, that it has been decided to hold them again. They make an appeal to the heart, through the eye as well as the ear, and it is hoped that they will help not only those who usually attend Church, but also others who are not often there, during this solemn time of Lent, to think quietly of the Love and Mercy of Our Heavenly Father, and of our duty towards Him of grateful worship.

DIOCESAN INSPECTION OF RELIGIOUS KNOWLEDGE.—On Tuesday, December 17th, 1912, the Diocesan Inspector visited East Bridgford School and expressed himself as highly pleased with the result of his examination of the work done during the past year. His report has now been received and is here given:—

"The Infants again did *well*. The most general answering was perhaps obtained in the Middle group. The written work was not quite up to the high standard of 1911. The children in each division showed that they had been very thoroughly taught. Tone and Discipline excellent."

J. P. HALES, *Diocesan Inspector*.

The Rector's Prizes for Religious Knowledge were awarded to the Children marked with an asterisk in the following list of those who did best in each class, the others having won the prizes in the previous year:—Class I, Beatrice Cuthbert, *Ada Lander, *Harry Cloxton, Walter Harrison. Class II, John Kemp, *Doris Bullimore. Class III, *Ethel Bullimore, *Freddy Shortland.

The Church Sunday School and members of the Catechism were entertained at tea on January 6th, the Feast of the Epiphany. Much amusement was afforded by a distribution of Christmas presents by Father Christmas. An exhibition of Lantern pictures followed, after which the Rector reviewed the work of the past year and awarded prizes.

The Sunday afternoon Catechism (this word means *oral instruction*) is held in Church at 2.30 and is always open to parents and others who may desire to be present.

HOSPITAL SUNDAY, January 26th, the collections at the services during the day amounted to £5 13s. 4d.

The Band of Hope annual Concert is announced for Monday, Jan. 27th.

The Total Abstinence Society announce the following speakers at meetings Tuesdays, January 28th, Mr. Welch; February 25th, Rev. H. Downman; March 11th, Rev. Mr. Grant.

The East Bridgford Choral Society will give a Concert during February. Mendelssohn's "Elijah" will be performed, and further particulars will be duly announced.

EXTRACT FROM PARISH REGISTER.
BURIAL.

January 2nd, 1913. John Dent, aged 87 years.

Time Table for East Bridgford of Trains to and from Nottingham, for February, 1913.

Leave Bingham.	Leave Lowdham.	Arrive Nottingham		Leave Nottingham.		Arrive Bingham.	Arrive Lowdham.
		G.N.R. Victoria.	M.R.	G.N.R. Victoria.	M.R.		
—	6.58	—	7.18	5.25	—	5.48	—
7.30	—	7.54	—	—	6.0	—	6.19
—	7.40	—	8.5	—	6.28	—	6.47
8.20	—	8.45	—	7.15	—	7.38	—
—	8.25	—	8.45	—	7.20	—	7.39
—	8.59	—	9.20	*8.10	—	8.34	—
9.4	—	9.18	—	—	8.32	—	8.51
*9.43	—	10.6	—	9.25	—	9.48	—
9.51	—	10.12	—	*10.25	—	10.47	—
—	9.56	—	10.22	—	11.25	—	11.46
—	11.20	—	11.42	11.50	—	12.13	—
11.59	—	12.23	—	—	12.45 <i>except Sat.</i>	—	1.3
—	1.35 <i>except Sat.</i>	—	1.55	—	1.5	—	1.24
*1.40	—	2.4	—	* 1.50	—	2.13	—
2.1	—	2.25	—	—	2.0	—	2.18
—	2.4	—	2.27	2.8	—	2.26	—
—	2.27	—	2.47	2.43	—	3.0	—
—	3.25 <i>Fridays</i>	—	3.40	—	2.58	—	3.19
*3.30	—	3.54	—	4.12 <i>Saturdays</i>	—	4.33	—
—	4.22	—	4.40	—	4.40	—	4.59
—	4.42	—	5.3	* 5.0	—	5.23	—
4.54	—	5.18	—	—	6.10	—	6.29
5.2	<i>Saturdays</i>	5.25	—	6.15	—	6.38	—
—	6.30	—	6.55	—	6.45	—	7.4
6.44	—	7.8	—	—	7.45	—	8.4
—	7.49	—	8.10	7.40	—	8.6	—
*6.2	—	9.26	—	8.47	—	9.13	—
9.10	—	9.34	—	—	9.20	—	9.38
—	9.42 <i>Saturday</i>	—	10.2	9.55	—	10.19	—
—	10.5 <i>except Saturday</i>	—	10.25	—	11.15 <i>Thur. & Sat.</i>	—	11.36
—	10.15 <i>Saturday</i>	—	10.35	11.0 <i>Wed. and Sat.</i>	—	11.24	—

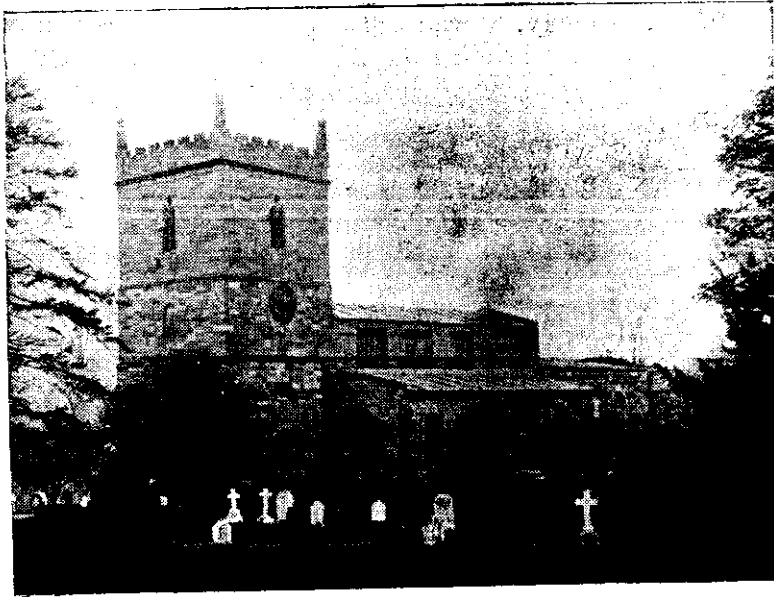
SUNDAYS.

—	12.41	—	1.0	—	10.7	—	10.26
3.3	—	3.27	—	11.40	—	12.4	—
4.55	—	5.18	—	2.10	—	2.33	—
—	6.48	—	7.10	6.3	—	6.28	—
8.35	—	9.0	—	—	8.10	—	8.29
—	—	—	—	9.58	—	10.20	—

*Newark trains.

N.B. — All the G.N.R. trains stop at London Road (High Level Station) as well as at the Victoria Station.

EAST BRIDGFORD MAGAZINE.



St. Peter's Church, East Bridgford.

Services.

HOLY COMMUNION:—

On all SUNDAYS (except 1st in Month) and HOLY DAYS at 8 a.m. and after Morning Prayer on the First Sunday in the Month.

MORNING AND EVENING PRAYER:—

Sundays at 10.45, and 6.30 p.m.

Weekdays at 8 a.m. (Wednesday and Friday at 10), and 6.30 p.m. daily.

HOLY BAPTISM:—

Second Sunday in month at 3, or at other Services on due notice.

CHURCHING OF WOMEN:—

Wednesday and Friday at 10, or before any Service on due notice.

SUNDAY SCHOOL:—

At 10 a.m. in the National School.

Children's Service and Catechizing in Church at 2.30.

During Lent, a course of Lantern Services has been held in Church at 7 p.m. The general thought in these services is the many voices of worship that are ever ascending to Almighty God, as expressed in the Te Deum. The subjects of the course were given last month, and the two remaining subjects are :—5. March 6th. The voice of the Angels.
6. „ 13th. The voice of the Apostles.

On Good Friday, March 21st, a Special Lantern service will be held suitable to the solemn subject of the day. “The way of grief.”

The Lord Bishop of Derby will hold a Confirmation in East Bridgford Church, at 3 p.m., on Monday, March 3rd. It is a service which all should attend who can do so, to recall their own Baptismal promise, and to unite in prayer for God's gift of His Holy Spirit to those now going forth in the Christians' warfare.

During Holy Week and at Easter, the services will be as follows:—Monday to Thursday, services at 10 and 6.30, (except Wednesday Morning, 12). On Thursday in Holy Week, a celebration of Holy Communion at 8. On Good Friday, March 21st, Litany at 8, Morning Prayer 11. Addresses, etc., 2, Evensong 6.30, Lantern Service 7.30.

On Easter Day, Holy Communion at 7, 8 and Mid-day. The Easter Offerings will be given to the Church Restoration Fund. Easter Day this year falls almost upon the earliest possible date. Since 1800, it has once occurred on March 22nd, the earliest possible date, and that was in 1818.

In 1845 and 1856 Easter Day was on March 23rd as in this present year 1913.

CHORAL SOCIETY.—On Tuesday, March 4th, the East Bridgford Choral Society, will give a performance of Judas Maccabæus (Handel), in the Temperance Hall, at 7.30 p.m. The soloists are, Miss Dorothy Gascoigne, Miss Dorothy Truman, Mr. J. Howarth, and Mr. J. Bailey. Pianist, Miss Sharpe. The training of the society has been most kindly undertaken this season by E. F. Usborne, Esq., of Thurgarton Priory, who will conduct the concert. Tickets, (reserved seats 2/-, second seats 1/-, admission 6d.), may be obtained from members of the Society.

THE SCHOOL has had a loss by the resignation of Miss Eva Whittington, who has left after more than two years' service as assistant Teacher, to take up a post in a school at her own home. The esteem in which she has been held was shown on Jan. 30th, by the presentation of a parting gift of a gold bracelet, from the managers, teachers and children of the School. We wish her all success in her work. During February, the vacancy has been temporarily filled by Miss Hilda Shaw, and the managers have appointed Miss Evelyn Taylor to the post, who will begin her duties on March 3rd.

EASTER VESTRY MEETING.—On Tuesday in Easter Week March 25th., the Easter Vestry, will be held in the school, at 7 o'clock, for the appointment of churchwardens and sidesmen, the presentation of accounts, and such other business as may be brought forward. A statement will be laid before the Vestry with regard to the proposed completion of the Restoration of the Church. It should be remembered that all churchmen and women can attend this meeting, and take part in Church matters, and they are earnestly requested to do so, though for strictly legal purposes such as the election of churchwardens, only the votes of those with the qualification of ratepayers are valid.

ELECTION OF LAY REPRESENTATIVES.—At the close of the Vestry Meeting on March 25th, an election of two Lay Representatives for our Parish will be held. The Representatives are elected for three years, and must be male communicant members of the Church of England. Their duties are to attend Conferences held from time to time in the Rural Deanery of Bingham and to elect from among their number lay members of the Diocesan Conference. Inasmuch as the Lay Members of the Diocesan Conference choose the Lay Members of the *Representative Council* of the Church of England, it is important that each Parish should do its part in the chain of representation. Each parish should therefore have its list of qualified voters, who have to sign a declaration that they are baptized and confirmed; and who must be, if males, of full age, and resident; if females, entitled by ownership or occupation to a vote at the Vestry of the parish. A form of Declaration for signature will be found in the Vestry after any service, for the next few weeks, for the convenience of those who have not already enrolled their names on the list of qualified voters.

HOSPITAL SUNDAY.—The collections on Jan. 26th amounted to £5 15s. 6d., of which one guinea was sent to the Women's Hospital and the rest to the General Hospital at Nottingham.

ON ASH WEDNESDAY our alms 9s. 7d., were given to the Nottingham Rescue Home, Southwell House.

The members of the Catechism are making their Lent almsgiving on behalf of the Waifs and Strays' Society.

The Total Abstinence Society give notice of a Meeting to be held on Tuesday, March 11th, Speaker, Rev. Mr. Grant; and meetings on Tuesdays, March 25th, and April 8th. The latter will be a social evening to conclude the winter's session.

CHURCH RESTORATION FUND.		£	s.	d.
Amount acknowledged, Dec. 31st, 1912	787	16 3
"Competition Prize"	1	0 0
Miss Chalk		2 6
Mr. John Upton (the late)	1	0 0
Mr. W. R. Sharman	1	0 0
New Year's Tea, Jan. 1st, 1913	2	10 6
G.F.S., Balance Social Evening		3 0
Rectory Box	1	3 0
Mr. J. Huskinson	2	0 0
Church Box, (Jan. and Feb.)		4 2
			<hr/>	
			£796	19 5

EXTRACTS FROM PARISH REGISTERS.

BAPTISMS.

Feb. 2nd.	John Noel, son of Arthur Bellaby and Bertha Shipman.
" "	Thomas, son of Foster and Beatrice Ida Thornton.
.. 14th.	Stephen Nigel, son of William George and Charlotte Fenimore.
.. 16th.	Gladys Violet, Mildred Alice, Fred, Sidney Clarence, Francis Calladine, Alfred, children of Robert and Annie Elizabeth Widdison.
.. 21st.	Annie Doreen, daughter of George Henry and Annie Elizabeth Crossland

BURIALS.

Jan. 29th.	Alice Upton, aged 81 years.
" "	Tom Thraves, aged 9 months.



EAST BRIDGFORD MAGAZINE.



St. Peter's Church, East Bridgford.

Services.

HOLY COMMUNION:—

On all SUNDAYS (except 1st in Month) and HOLY DAYS at 8 a.m.
and after Morning Prayer on the First Sunday in the Month.

MORNING AND EVENING PRAYER:—

Sundays at 10.45, and 6.30 p.m.

Weekdays at 8 a.m. (Wednesday and Friday at 10), and 6.30 p.m. daily.

HOLY BAPTISM:—

Second Sunday in month at 3, or at other Services on due notice.

CHURCHING OF WOMEN:—

Wednesday and Friday at 10, or before any Service on due notice.

SUNDAY SCHOOL:—

At 10 a.m. in the National School.

Children's Service and Catechizing in Church at 2.30.

On Good Friday evening, after the regular services of the solemn day were over, a very devotional Lantern Service, "The Way of Grief," was held at 7.30, at which all the available seats were filled with a reverent congregation. Each week during Lent there has been an instructive Lantern Service, which has been well attended. We are much indebted to Mr. T. Rowley who made an efficient lanternist, and to Mrs. Rowley, whose solos added much to the effect of the services.

On Easter Day the three celebrations of Holy Communion and Evensong were well attended. The Easter offerings made a welcome addition of £107 8s. 1d to the Church Restoration Fund.

HORTICULTURAL SOCIETY.—A general meeting was held on March 3rd, at which a proposal of the committee to commemorate the fact that this is the fiftieth anniversary of the Flower Show, was considered. It was unanimously agreed to make a special effort to mark the event, by securing a more commodious field, and arranging for a series of popular sports, as well as providing a good band for dancing. A large committee was appointed to carry out the special programme of this year, on the Tuesday in Feast Week, July 1st. It was agreed that when the subscriptions are collected, subscribers should have the opportunity of promising an additional amount, equal to their subscription, to form a guarantee fund which may be called upon, should any additional expenditure be required. It is hoped that most of the subscribers will show their willingness to further the effort, to make the Jubilee Flower Show a success.

THE EAST BRIDGFORD CHORAL SOCIETY gave a most enjoyable and successful performance of Handel's Oratorio, "Judas Maccabæus," on March 4th, in the Temperance Hall. There was a small orchestra, and Mr. E. F. Osborne, who conducted, is to be congratulated upon the excellence of the concert under his guidance. The Choral Society is in a flourishing condition, and hopes to begin practising again in the Autumn, when new members will be warmly welcomed.

THE BAND OF HOPE prize-giving on March 11th, was presided over by Mrs. Hill, and Mrs. J. Upton, jun., presented the prizes. The following gained first prizes for attendance, Ada Lander, Edna Clegg, Rebecca Ellis, Sybil Wilkinson, Marjorie Wilkinson; and for conduct Minnie Gray and Ernest Waterfield. We are glad to say that Ernest Waterfield has been enabled, by the kindness of friends, to enter the Cripples' Home in London, and his parents wish to take this opportunity of returning their best thanks for it.

On March 4th, Mr. A. W. Hickling, of Adbolton, was elected to the County Council for the Bingham Electoral Division.

On March 17th, a parish meeting was held for the triennial election of Parish Councillors, and the presentation of Charity Accounts. The Rector was in the chair. The following were elected to the Parish Council.—Messrs. W. Alvery, W. Baguley, E. E. Coville, H. Crossland, T. Euerby, H. Forrest, A. W. Mason, M. W. Millington, S. Richardson, J. Turner and J. Wilkinson.

The Easter Vestry Meeting was held on Tuesday, March 25th. The Churchwardens Accounts which are given below, showing a balance due to the Churchwardens of £13 14s. 6d., were passed. The Rector, after expressing his thanks to the officials for their services during the past year, nominated Mr. J. Turner; and the Vestry unanimously re-elected Mr. R. Swanwick, to be churchwardens. Messrs. C. Allwood, E. B. Coville, D. Gower, C. Millington and C. Weatherell, were chosen as sidesmen.

The Rector announced that the Church Restoration Fund now amounted to £906, and the resolution was unanimously carried that the Vestry approves of the Restoration of the Church being begun as soon as possible.

The following resolution, proposed by Mr. G. Cartwright, and seconded by Mr. E. E. Coville, was unanimously carried.—"That this Vestry Meeting of the parish of East Bridgford, protests against the Bill for Disestablishment and Disendowment of the Church in Wales, and its dismemberment from the rest of the Church in this land, as being a measure prejudicial to the best interests of the country, unjust to an active and growing part of the Church, and an unjustifiable interference with the whole organisation of the Church."

The Diocesan Finance Scheme was discussed, and Mr. Hodges explained that the amount required to be raised for the work of the diocese was £4,495, of which the proportion asked from the parish of East Bridgford would be about £7. The Vestry passed the resolution, "That we desire to give a hearty support to the Diocesan Finance Scheme, and will endeavour loyally to contribute our share on Diocesan Sunday, June 1st."

At the close of the Vestry Meeting the Parochial Electors chose as their Representatives on the Ruridecanal Conference for the next three years, Mr. W. A. Hodges and Mr. J. Turner.

The Total Abstiners' Society hold their social evening, to conclude the winter's session, on Tuesday, April 8th.

It is proposed to hold a Sale of Work and Entertainment on May 6th. Proceeds for Church Restoration Fund.

SUMMARY OF CHURCHWARDENS' ACCOUNTS AND COLLECTIONS IN CHURCH.

EASTER, 1913.

RECEIPTS	£	s	d	EXPENDITURE	£	s	d		
Subscriptions, May, 1912	..	10	0	Repaid Churchwardens	..	9	10	2	
Collections—Church Expenses	..	73	1	Repairs	3	4	
Sick and Poor Fund	10	13	9	Churchyard, care of	2	10	0	
Saints' Days, &c.	..	2	11	Insurance, Fees	2	18	
<i>Special Objects, viz:—</i>				Organ and Choir	37	18	3	
Church Building Assoc.	10	6		Clerk's Salary	15	0	0	
Diocesan Sunday ..	4	13	0	Bellringers	9	0	0	
Missionary Students ..	8	0		Fuel, Light, Cleaning	11	1	9	
Home Missions, A.C.S.	4	7	6½	Lantern Services	8	12	1	
Foreign .. S.P.G.	7	3	11	Church Building Association, 1911	10	0	
Sunday School ..	4	1	2	Sundries	1	15	3	
Church Defence ..	3	18	2½	Alms disbursed	10	13	9	
Hospitals ..	5	15	6	Special Objects (as other side)	..	33	1	5	
Southwell House ..	9	7		Treasurer—Church Restoration	..	222	8	0	
Mission to Jews ..	1	14	0						
		33	1						
Church Restoration	222	8						
Balance due to Churchwardens	..	13	14						
		6½							
		£365	11	3			£365	11	3

EXTRACTS FROM THE PARISH REGISTERS.

BAPTISM.

March 9th Walter, son of George and Sarah Jane Ellis.

BURIAL.

March 5th Hannah Beighton Truman, aged 86 years.



EAST BRIDGFORD MAGAZINE.



St. Peter's Church, East Bridgford.

Services.

HOLY COMMUNION:—

On all SUNDAYS (except 1st in Month) and HOLY DAYS at 8 a.m. and after Morning Prayer on the First Sunday in the Month.

MORNING AND EVENING PRAYER:—

Sundays at 10.45, and 6.30 p.m.

Weekdays at 8 a.m. (Wednesday and Friday at 10), and 6.30 p.m. daily.

HOLY BAPTISM:—

Second Sunday in month at 3, or at other Services on due notice.

CHURCHING OF WOMEN:—

Wednesday and Friday at 10, or before any Service on due notice.

SUNDAY SCHOOL:—

At 10 a.m. in the National School.

Children's Service and Catechizing in Church at 2.30.

THE DIOCESAN FINANCE SCHEME.—I wish to lay before Churchpeople a clear statement of what is meant by this scheme, in which our Parish, and all Parishes in the Diocese are called upon by our Bishop to co-operate.

1.—The first point to be recognised is that the work of the Church is carried on in Dioceses, under Bishops. This binds all the Parishes within the Diocese into a common unity; and while each Parish has its own endowment and its own responsibilities for certain work, there is a great deal which is essential to the vital needs of the Church which can only be accomplished by the Diocese working together as a whole.

2.—There are seven essential departments of church work to be maintained, namely:—1, Training for the Ministry. 2, Maintenance of the Ministry. 3, Providing pensions for the Ministry. 4, Care of widows and orphans of the Clergy. 5, Erection of Church buildings. 6, Religious education of the young. 7, Expenses of Diocesan Organization. These are all recognised and to some extent provided for by the subscribers to existing Diocesan Societies; but the new scheme seeks, by combining them all under one Diocesan Finance Association, to gain efficiency and to appeal more widely to every parish to bear its share in the work.

3.—A great deal of time and labour has been given by the Board of Finance to draw up an estimate of the present needs of the Diocese, by which it appears that £4,495 is required, over and above the subscriptions already expected by the Diocesan Societies for 1913. It is hoped to raise this sum, by apportionment among the Parishes, to be collected as far as possible on Diocesan Sunday, June 1st, 1913.

4.—At the Conference of the Rural Deanery of Bingham, held on April 18th, the apportionment for each of its Parishes was considered. There are 19 Parishes in the Deanery, and the conference consists of the Clergy, and about twice as many Laymen, who are elected parochial representatives. The Deanery has been assessed for a contribution of £100, of which East Bridgford, the third largest Parish, is now called upon to contribute £10 as its share of the whole amount required for the Diocese of Southwell.

This assessment was considered by the East Bridgford Church Council, at their quarterly meeting on April 21st. It was clearly recognised that while the amount named was in no sense asked for under any compulsion, it was the duty of Churchpeople to provide a fair proportion of the funds required for Diocesan purposes. It was agreed that the appeal should be made on Diocesan Sunday, and that if the collections did not amount to £10, another Sunday should be set apart this year by the Churchwardens for the purpose.

5.—In his address to the Diocesan Conference last October, our Bishop said, "I shall watch for the evidence of the willing spirit, for evidence from town and village, from the wealthy and the wage-earner, of the spirit which says—Do not talk to us of compulsion, or of a tax in any form, only give us some guidance of what we ought to aim at—give us knowledge of what the Church wants, and then trust us to do our best." We do not want our Bishop to watch in vain. For many years past we have made our Church collection on Diocesan Sunday; in 1911, we collected £8 17s. 11d., in 1912, we sent up £6 3s. 0d.; this year let us catch something of the enthusiasm of our Bishop, and do more, in the spirit of the resolution we passed at the Easter Vestry, "That we desire to give a hearty support to the Diocesan Finance scheme, and will endeavour loyally to contribute our share on Diocesan Sunday, June 1st.

A. D. HILL.

NURSE FUND.—On April 1st, a Whist Drive and Dance was arranged in the Temperance Hall. It was well attended and the proceeds £6 0s. 1d. were devoted to the Nurse Fund. The thanks of the committee are heartily accorded to the promoters of this successful effort.

On April 7th, Mr. John Wilkinson was elected as District Councillor for the Parish of East Bridgford.

Messrs. S. Richardson, W. Baguley, and E. E. Coville, have been appointed Overseers by the Parish Council: Mr. Turner having retired after twenty-nine years of office, for which our best thanks are due to him.

It is now arranged that the Sale of Work and Entertainment, already announced, in aid of the Church Restoration Fund, shall take place on Monday, May 19th, in the Temperance Hall. Admission, 3 to 5, 1/-; 5 to 10, 3d. Refreshments will be provided; and there will be entertainments of acting, games, competitions, and a Bran Tub.

The quarterly meeting of the Mothers' Union will take place at the Rectory, on Monday, May 5th, beginning with a service in Church at 2.30, for all those interested in the work.

The committee of the East Bridgford Horticultural Society are progressing with their arrangements for fiftieth anniversary of the Flower Show which will take place on July 1st.

ASCENSION DAY, May 1st, Holy Communion 8 a.m., Morning Service 11 Evening Service 7.30.

WHITSUNDAY, May 11th, Holy Communion 7, 8, and at mid-day.

The offerings on Ascension Day will be given to the Diocesan Missionary Studentship Fund, and on Whitsunday to the Church Restoration Fund.

CHURCH RESTORATION FUND.—The Church Council have been considering tenders for the work and hope shortly to be in a position to make a statement with regard to the course to be followed. All prices for building work have risen so much that the necessary cost will be much larger than was anticipated. They desire to ask all who love their Church, and wish to see the restoration completed, to make their contributions *now*, that the subscription list may be an indication of a real desire on the part of the parishioners that the work may be set forward to the glory of God.

CHURCH RESTORATION FUND.			£	s.	d.
Amount acknowledged, March, 1913	796	19	5
Rev. F. H. Du Boulay	1	0	0
Mr. C. Millington (Box)	1	0	0
Easter Day Offerings	107	8	1
Mr. R. Swanwick	1	1	0
Rector and Mrs. Hill	300	0	0
			<hr/>		
			£1207	8	6

The Churchwardens desire to acknowledge with thanks that the adverse balance which their accounts showed at the Easter Vestry of £13 14s. 6d., has now been cleared off. The collections on the two Sundays after Easter, when a special appeal was made, amounted to £10 7s. 5d., and subscriptions have been received from Mrs. Tomlinson £3, and Mrs. Milward 10/-.

EXTRACTS FROM THE PARISH REGISTERS.

RAPTISM.

April 21st. Olga, daughter of Charles and Hilda Catherine Moor.

MARRIAGE.

April 16th, at STAPLEFORD. Arthur William Jones and Florence Alice Bennett.

BURIAL.

April 16th. Jane Upton, aged 59 years.



EAST BRIDGFORD MAGAZINE.



St. Peter's Church, East Bridgford.

Services.

HOLY COMMUNION :—

On all SUNDAYS (except 1st in Month) and HOLY DAYS at 8 a.m. and after Morning Prayer on the First Sunday in the Month.

MORNING AND EVENING PRAYER :—

Sundays at 10.45, and 6.30 p.m.

Weekdays at 8 a.m. (Wednesday and Friday at 10), and 6.30 p.m. daily.

HOLY BAPTISM :—

Second Sunday in month at 3, or at other Services on due notice.

CHURCHING OF WOMEN :—

Wednesday and Friday at 10, or before any Service on due notice.

SUNDAY SCHOOL :—

At 10 a.m. in the National School.

Children's Service and Catechizing in Church at 2.30.

ON WHITSUNDAY the collections for the Church Restoration Fund amounted to £4 19s. 2d., at the morning and evening services. A party of Boy Scouts, who had their camp in Mr. Hodges' field, attended mattins.

On May 25th, the Nottingham section of the Notts and Derby Mounted Brigade Field Ambulance camped at East Bridgford and attended Church.

A Pastoral letter from the Bishop was read on May 25th, calling on the whole body of the Church within his diocese to support the effort to be made on Diocesan Sunday, June 1st, which was fully explained in last month's magazine.

On Trinity Sunday the celebration of Holy Communion at 8 a.m. was made with simple music and hymns. There are many to whom a reverent musical rendering, such as our Prayer book intends and provides for, is a great help in offering this greatest service of Thanksgiving and Intercession; and those who will take a little trouble to become as familiar with this music as they are with the responses at Mattins and Evensong, will soon learn to value it more and more. There is some difficulty in finding an hour which is convenient for all, and for the present we must be willing to remain in an experimental stage. But of course the usual plain services which others may prefer, will not be interfered with, so far as the restoration to be done in the Church will permit us to continue them.

On Feast Sunday, St. Peter's Day, June 29th, there will be two celebrations of Holy Communion, at 7 and at 9 a.m. (choral). The offerings on this day are for the Choir and Ringers' Fund.

FRIENDLY SOCIETIES.—The Oddfellows held their festival on Whit-Monday. The changing conditions of Friendly Societies at the present time seem to be affecting the members, though the numbers are well maintained, much fewer than usual turning up for the Service in Church and the Dinner at the Royal Oak.

The Primitive Methodist Friendly Society held their annual meeting and tea, and we understand that the future of this long-established society is still under serious consideration.

It is to be hoped that the spirit of brotherhood and mutual help, so long promoted amongst us by Friendly Societies, will not be altogether lost.

The Band of Hope paraded the Village on Whit-Tuesday, and in the evening, provided the usual Concert, for which Miss Sharpe had trained the children with much success.

A SALE of Work and entertainment was held at the Temperance Hall on Monday, May 19th, in aid of the Church Restoration Fund. The members of the Work Party, which has been held at various houses during the winter, worked hard for its success, and with their contributions and sales since November, the satisfactory sum of £41 13s. has now been obtained.

During the afternoon and evening, two very spirited performances were given on the stage, "The backward child," by Miss E. Ferris and Miss Browne, and "Yes Papa," by Miss E. Ferris. Miss Sharpe and the Band of Hope children very kindly repeated their pretty performances of the Maypole and Flower dance.

A DEMONSTRATION against the Bill for the Disendowment and Disestablishment of the Welsh Church, will be made at Bingham on Tuesday, June 10th. All who disapprove of this Bill are asked to show their disapproval by joining in the Procession from Bingham Market Place to the Church. Handbills have been distributed suggesting that those from East Bridgford should assemble by the Railway goods station gates at 6.20 p.m. and thence proceed to the Market Place. At 7 p.m., punctually, the Procession will be formed to the Church for a short service of Intercession. At 7.45 a Public meeting will be held in the garden of Bingham Rectory, Chairman, The Ven. Archdeacon of Newark. There is an excellent array of speakers, who will be the Hon. Aubrey Herbert, M.P., Mr. David Rhys, and Mr. W. A. Wheel. These last two are Welshmen.

We call upon all, whether Churchmen or not, who are convinced of the serious character of the issues at stake, to join in this Demonstration. Though Bingham is some distance away, it is worth while to make a united effort, even at some personal inconvenience, to show the earnestness of our opposition to the Bill now before Parliament: a bill which will divert money given for religion to other purposes, and inflict a cruel injustice on the unity and organization of the Church.

CHURCH RESTORATION.—The Church Council at a Meeting held on May 5th, agreed to accept the Tender of Messrs. Maxey & Son, of Sleaford. The contract has now been signed, to include the whole work proposed to be done to the nave and aisles, which will occupy about six months, and the contractor will take possession of the Nave on Monday, June 2nd. During that period arrangements will be made for holding morning and evening service in the school, but the chancel will be boarded off and be still available for the due administration of the Sacraments and for daily service. The Notts Church Extension Society has made a grant of £100 to the funds, which now amount to £1,490.

CHURCH RESTORATION FUND.

	£	s.	d.		£	s.	d.
Amount acknowledged May 1913	1207	8	6	Mr. P. Newcombe	1	0	0
A.B.	10	0	0	Count L. Arco	1	0	0
F.B.	2	6	0	Mr. J. Mussell	10	5	0
Mrs. Beckwith	5	0	0	Mr. R. Jones	1	0	0
Miss Fox	100	0	0	Whitsunday offerings ..	4	19	2
Mr. Swingler	1	0	0	Notts Church Extension Society	100	0	0
C.G.	5	0	0	Sale of Work, etc., May 19th ..	41	13	0
Mr. Simpkin	1	1	0	Church Box (March-May) ..	15	1	0
Miss Simpkin	10	6	0	Mr. H. P. Goldston	10	0	0
Mr. J. Lodder	5	0	0	Mrs. Boultyby	10	0	0
Mrs. Milward	5	0	0	Miss Christian	2	0	0
Mrs. Weatherell	10	0	0				
J. H. Etherington-Smith, Esq. ..	5	0	0	Total May 24th, 1913	£1490	1	3

THE 50TH ANNIVERSARY OF THE FLOWER SHOW.—The Jubilee of the East Bridgford Horticultural Society, the object of which is to promote Cottage Gardening and Floriculture, will be celebrated on Tuesday in Feast week, July 1st, 1913. The Radcliffe Brass Band has been engaged to play during the afternoon and to provide dancing in the evening. The Marquee will this year be pitched in the old Cricket Field, kindly lent by Mr. Turner. Admission 2 to 5 p.m. 6d., 5 p.m. to the close 3d.

At 5.30 p.m. Sports will be held on the ground and prizes awarded for eight events, of 5/-, 3/- and 2/- (but no third prize if less than six entrances.) Entries, 3d. for each event, to be made to Mr. E. E. Coville, East Bridgford.

The schedule of Prizes at the Flower Show will be in the hands of subscribers by this time, but attention may be called to the following points :—

Rule 12. No exhibitor to take both first and second prize for any exhibit.

The value of the prizes for sweet peas has been increased.

The prize offered by Messrs. Doncaster & Son, for tray of vegetables is limited to classes B and C.

Extra prizes (1st and 2nd) will be given for the best exhibits of competitors in Class C, who fail to win a prize.

An open prize, for all within five miles of East Bridgford, 10/- first prize ; 5/- second prize, is offered for the best tray of 10 vegetables. Entrance fee 1/-. Apply to Mr. H. Goldston, Hon. Sec.

The Committee are of opinion that some guarantee fund should be available in case of a deficit, owing to any unavoidable cause such as stormy or wet weather preventing the success they so much desire for this Jubilee Show. They have therefore issued an appeal to subscribers asking them if they are willing to promise an amount equal to their subscription if required for this guarantee fund.

We heartily wish all success to the Jubilee Show ; and we sincerely hope that no unfavourable weather will make it necessary to call upon this guarantee fund, and that all inhabitants of East Bridgford will do their best to ensure continued prosperity to the Horticultural Society.

MOTHERS' UNION.—A service was held in Church on May 5th for the members, with a sermon by the Rector on the story of Hannah and Samuel. Eight new probationers were admitted, including one from Kneeton and one from Car Colston.

CRICKET CLUB.—The annual meeting was held on May 6th, when the accounts were passed showing a balance in hand £3 6s. 4d. The officers elected were, *President*, W. A. Hodges, Esq. ; *Hon. Sec.*, Mr. E. N. Sears ; *Treasurer*, Rev. A. D. Hill ; *Captain*, Mr. R. Richardson ; *Vice-Captain*, Mr. H. Foster ; *Committee*. Messrs. G. Bateman, E. E. Coville, H. P. Goldston, J. Lodder, C. Moor, A. Smith, C. R. Weatherell, C. Wilkinson.

The first two matches have been won, on May 10th against Lowdham (40—15) and on May 20th against Whatton (54—50). The following matches are arranged :—

May 24.	Gunthorpe	(Away).	June 14.	Bingham	(Home).
„ 29.	Notts Unity	(Home).	„ 21.	Cropwell	(Away).
„ 31.	Cropwell	(Home).	„ 30.	Squire's XI	(Home). { Feast
June 7.	Tithby A.	(Away).	July 1.	Whatton	(Home). { Week
			„ 7.	City Police	(Home).

EXTRACTS FROM PARISH REGISTERS.

MARRIAGE.

May 12th. At *Flintham*—George Turner Jackson and Jane Ellen Cooper.

BURIALS.

March 1st. Stephen Nigel Fenemore, aged 2 months.

May 6th. At *Homington, Wills*, Catherine Swayne Beckwith, aged 54 years.

EAST BRIDGFORD MAGAZINE.



St. Peter's Church, East Bridgford.

Services.

HOLY COMMUNION:—

On all SUNDAYS (except 1st in Month) and HOLY DAYS at 8 a.m.
and after Morning Prayer on the First Sunday in the Month.

MORNING AND EVENING PRAYER:—

Sundays at 10.45, and 6.30 p.m.

Weekdays at 8 a.m. (Wednesday and Friday at 10), and 6.30 p.m. daily.

HOLY BAPTISM:—

Second Sunday in month at 3, or at other Services on due notice.

CHURCHING OF WOMEN:—

Wednesday and Friday at 10, or before any Service on due notice.

SUNDAY SCHOOL:—

At 10 a.m. in the National School.

Children's Service and Catechizing in Church at 2.30.

CHURCH RESTORATION.—The work in the Church has now begun in earnest. On June 8th, we held our last services in the Nave, and the Chancel is now boarded off so that the Holy Communion can be celebrated, and daily service said there. Morning and Evening Prayer on Sundays are now held in the school, which though some inconvenience must naturally be felt, has been very suitably arranged for the purpose. Those who saw the Church after the seats were removed must have been struck with its spacious and dignified proportions; and will perhaps regret that so much of it is hidden by pews. The clearing of the floor reveals also the exceedingly dangerous state of the pillars of the south arcade which will have to be carefully supported during repair.

The Church Council has now decided that the re-hanging of the bells shall be proceeded with at once, in order to get all the work over at the same time and to avoid further disturbance after the nave is completed. They hope this will call forth additional sympathetic help from those who love the sound of the Church bells, and feel that it is due to the ringers who have gallantly struggled for so long with dangerous and imperfect machinery. Messrs. Gillett and Johnston have taken down the frame and bells, and we shall therefore be without our bells and clock chimes for some time.

A contribution of £40 has been made by the Incorporated Church Building Society, for which we are grateful.

CHURCH RESTORATION FUND.

	£	s.	d.		£	s.	d.
Amount acknowledged, June, 1913	1490	1	3	Mr. W. Baguley ..	2	2	0
B.D. ..		5	0	Mr. J. S. Wilkinson ..	3	0	0
Church Building Society ..	40	0	0	A Friend ..		10	0
Mr. Jesson ..		5	0	Winchester Guild of Ringers ..	1	6	0
Mrs. Kingdon ..		5	0	Church Box to June 10th ..		2	3
Members of The Catechism ..	1	3	1				
E. and G. ..		5	0		£	1539	4 7

THE DEMONSTRATION against the Welsh Church Bill, which was held in Bingham, on Tuesday, June 10th, was carried out with great success. The nineteen parishes which are comprised within the Rural Deanery of Bingham sent their contingents, who assembled in the Market Place at 7 p.m., and led by the band marched to Church for a Service of Intercession. Bingham Church has received many gifts lately, and the beautiful choir stalls and marble pavement, erected as memorials to the late Rector and Dr. Eaton, are much to be admired. After the service a public meeting was held in the Rectory Garden at 7.45, at which the newly appointed Archdeacon of Newark, late Rector of Holmepierrepoint, presided. The Hon. Aubrey Herbert, M.P., was unable to be present, but capital speeches were made by Mr. David Rhys, a Nonconformist, and Mr. W. A. Wheel, who are both Welshmen, and who

thoroughly exposed the injustice and cruelty of the Bill, and the misleading statements which are made to support it. There were over a thousand people present at the meeting and the Resolution against the Bill was unanimously passed. The arrangements for the meeting made by the Rector of Bingham, Rev. H. R. M. Hutt, and the Committee, were excellent, and punctually carried out. An imposing demonstration was held at Nottingham on Thursday, June 26th, and in all parts of the country similar meetings are being attended by great numbers.

DIOCESAN SUNDAY FUND.—We are very glad to record that our Bishop's appeal for wider interest and support for the Church's work in the Diocese met with a good response on Sunday, June 1st, and that the contribution asked for from East Bridgford, was reached by the offerings at the morning and evening services, which amounted to £10 5s. 8d.

THE SCHOOL was closed on June 2nd, for three weeks in consequence of an outbreak of scarletina, which fortunately has been checked by precautions being taken. The Buildings have been thoroughly disinfected, and the School re-opened on June 23rd, closing again only for three days in Feast Week. The School Managers appointed for the three years ensuing from June 30th, 1913 are, Rev. A. D. Hill, Mr. W. Hodges, Mr. J. Pickford, Mr. J. Wilkinson, Miss G. Fox (by County Council), Mr. A. W. Mason (by Parish Council).

A LAWN TENNIS TOURNAMENT in aid of the East Bridgford and District Nursing Fund was held on Saturday, June 28th. Tennis Lawns were lent by Mrs. Duff, Mrs. Hodges, Mrs. Moor, Mrs. Weatherell, and Mrs. Woodsend. Mr. W. A. Woodsend kindly acted as Secretary. Some 25 couples entered, and about £3 15s. was realized for the Nurse Fund.

GIRLS' FRIENDLY SOCIETY.—The Annual Festival will be held this year at Kneeton, on Tuesday, July 8th. Service in the church at 3 p.m.

FEAST WEEK.—As the Magazine goes to the printer the prospects of the 50th annual show of the East Bridgford Horticultural Society on July 1st look bright. The weather continues settled, and though we are longing for some rain after the drought of the past month, yet we all like to have it fine for the feast.

The Cricket Club play their return match with Whatton on July 1st.

Sports are to be held in the Show Ground at 5.30 p.m., when prizes will be given for 100yds, Quarter of a mile, and mile handicaps; Long jump, High jump, and Pole jump; a race for Ladies, for those under 14, and a Walking race.

The names of the prize-winners at the Flower show and the winners at the sports, will be printed in the August number of the Magazine.

CRICKET CLUB.—The following matches have been played :—

May 24.	East Bridgford	29	Gunthorpe	84	(Away)
" 29.	"	70	Notts Unity II	65	(Home)
" 31.	"	55	Cropwell	91	(Home)
June 7.	"	75	Tithby	30	(Away)
" 14.	"	114	Bingham	45	(Home)
" 21.	"	64	Cropwell	55	(Away)
" 28.	"	115 for 6 wkts.	Grantham's XI	44	(Home)
" 30.	"	59 for 6 wkts.	Squire's XI	45	(Home)

We congratulate Mr. H. P. Goldston on his 45 runs on June 14th, and 65 on June 28th, and the Cricket Club on having won eight out of ten matches in May and June.

The matches fixed for this month are :—

July 1.	Whatton	(Home)	July 17.	Car Colston	(Home)
" 7.	City Police	(Home)	" 19.	Shelford	(Away)
" 10.	Car Colston	(Away)	" 26.	Stoke Bardolph	(Away)
" 12.	Tithby	(Home)	Aug. 2.	Lowdham	(away)

EXTRACTS FROM PARISH REGISTERS.

MARRIAGE.

June 21st. At *March* (Cams), Tom Higgs and Agnes Annie Tharby.

BURIAL.

June 16th. May Messent, aged 45 years.



EAST BRIDGFORD MAGAZINE.



St. Peter's Church, East Bridgford.

Services.

HOLY COMMUNION:—

On all SUNDAYS (except 1st in Month) and HOLY DAYS at 8 a.m. and after Morning Prayer on the First Sunday in the Month.

MORNING AND EVENING PRAYER:—

Sundays at 10.45, and 6.30 p.m.

Weekdays at 8 a.m. (Wednesday and Friday at 10), and 6.30 p.m. daily.

HOLY BAPTISM:—

Second Sunday in month at 3, or at other Services on due notice.

CHURCHING OF WOMEN:—

Wednesday and Friday at 10, or before any Service on due notice.

SUNDAY SCHOOL:—

At 10 a.m. in the National School.

Children's Service and Catechizing in Church at 2.30.

The Parish Council has now taken over the care and maintenance of the seats erected as our memorial of the Coronation of King George V. It is to be regretted that some ill-disposed persons have lately interfered with the seat placed in a very pleasant situation near the Wharf.

The Church bells have now been taken down and sent off to the Foundry of Messrs Gillett & Johnston at Croydon to be tuned and fitted with new wheels and stocks. As they stood in the Churchyard path on Sunday, July 6th, the unusual sight attracted many of the inhabitants of the village.

The Rector will be glad to receive subscriptions, large or small, for the Church Restoration, which includes the re-hanging of the bells.

The School will close for the Summer holidays on Friday, August 1st, and re-open on Monday, September 1st.

The East Bridgford Horticultural Society celebrated its Jubilee on Tuesday in the Feast week, July 1st. The first Flower Show was held in 1864 and no doubt since then has undergone some vicissitudes, but this year the attendance has exceeded that of any previous occasions, and the Society is to be congratulated on having not only been able to provide additional attractions, but also on obtaining a satisfactory balance in its funds. The show was held in the old cricket field, of which a large portion was railed off from the fair ground for the purpose of holding sports. This is the twenty-ninth year in which Mr. Goldston has been secretary and the continued success of the show is due in great measure to him.

LIST OF PRIZE WINNERS.

CLASS A.

Roses—1 Miss Fox, 2 Mr. Hodges
 Geranium (Bloom)—1 Rev. A. D. Hill, 2 Mr. Hodges
 (Foliage)—1 Rev. Hill
 Pelargonium—1 Rev. Hill
 Fuchsia—1 Mr. Woodsend, 2 Rev. Hill
 Calceolaria (Herbaceous)—1 Rev. Hill
 (Shrubby)—1 Miss Fox, 2 Rev. Hill
 Petunia—1 Rev. Hill, 2 Mr. Woodsend
 Plants (Greenhouse)—1 Rev. Hill, 2 Mr. Woodsend
 Sweet Williams—1 Miss Fox, 2 Mr. Woodsend
 Bouquet—1 Miss Fox, 2 Dr. Duff
 Pansies—1 Rev. Hill, 2 Mr. Hodges
 Sweet Peas—1 Miss Fox, 2 Mr. Woodsend
 Carrots—1 Mr. Woodsend, 2 Rev. Hill
 Cauliflowers—1 Mr. Hodges, 2 Rev. Hill
 Cucumbers—1 Rev. Hill, 2 Miss Fox
 Broad Beans—1 Mr. Hodges, 2 Rev. Hill
 Onions (Spring)—1 Mr. Woodsend, 2 Rev. Hill
 (Autumn)—1 Mr. Hodges, 2 Mr. Woodsend
 Lettuces—1 Mr. Hodges, 2 Miss Fox
 Peas—1 Rev. Hill, 2 Mr. Hodges
 Potatoes (Round)—1 Mr. Woodsend, 2 Rev. Hill
 (Kidney)—1 Miss Fox, 2 Mr. Woodsend
 Turnips—1 Miss Fox, 2 Mr. Hodges
 Apples (last year's)—1 Mr. Hodges
 (new)—1 Miss Fox, 2 Mr. S. Richardson
 Gooseberries—1 Mr. Hodges, 2 Rev. Hill
 Currants (White)—1 Mr. Woodsend, 2 Rev. Hill
 (Red)—1 Rev. Hill, 2 Mr. Richardson
 (Black)—1 Mr. Hodges, 2 Dr. Duff
 Raspberries—1 Mr. Richardson, 2 Miss Fox
 Strawberries—1 Miss Fox, 2 Mr. Hodges
 Cherries—1 Mr. Turner
 Best Tray of Vegetables—1 Rev. A. Hill

CLASS B.

Roses—1 Mr. E. Sears, 2 Mr. E. Coville
 Geranium (Bloom)—1 Mr. W. C. Millington, 2, Mr. J. F. Knight
 Geranium (Foliage)—1 Mr. Millington
 Pelargonium—1 Mr. W. Swingler, 2 Mr. Millington
 Fuchsia—1 Mr. Millington
 Calceolaria (Shrubby)—2 Mr. W. Swingler
 Petunia—1 Mr. Millington, 2 Mr. Knight
 Window Plants—1 Mr. Coville, 2 Mr. Swingler
 Sweet Williams—1 Mr. Coville, 2 Mr. Millington
 Bouquet—
 Pansies—1 Mr. Coville, 2 Mr. Millington
 Sweet Peas—1 Mr. E. N. Sears
 Carrots—1, Mr. Millington
 Cauliflowers—1 Millington, 2 Sears
 Cucumbers—1 Millington, 2 Mr. F. Alvey
 Broad Beans—1 Mr. Sears, 2 Mr. Swingler
 Onions (Spring)—1 Mr. Sears, 2 Mr. Millington
 (Autumn)—1 Sears, 2 Millington
 Lettuces—1 Sears, 2 Swingler
 Peas—1 Sears, 2 Millington
 Potatoes (Round)—1 Sears, 2 Swingler
 (Kidney)—1 Sears, 2 Swingler
 Turnips—1 Sears
 Apples (last year's)—1 E. E. Coville
 (this year's)—1 T. Alvey, 2 W. Swingler
 Gooseberries—Swingler
 Currants (white)—T. Alvey
 (red)—1 A. Shipman, 2 Alvey
 (black)—A. Shipman
 Raspberries—1 Swingler, 2 Alvey
 Strawberries—1 Swingler, 2 Sears
 Cherries—1 Alvey, 2 J. Stanley
 Best Tray—1 Sears, 2 Millington

CLASS C.

Roses—1 Mr. F. O. Green, 2 Mr. T. Watson
 Geranium (bloom)—1 Green, Mr. R. Upton
 (foliage)—1 Green, 2 Watson
 Pelargonium—1 Green, 2 Watson
 Fuchsia—1 Green
 Calceolaria—1 Green, 2 Upton
 Pot of Musk—1 Green
 Petunia—1 Green
 Sweet Williams—1 Green
 Collection of Cut Flowers—1 Green
 Pansies—1 Green
 Sweet Peas—1 Green, 2 Watson
 Carrots—1 Green
 Cauliflowers—1 Green
 Cabbages—1 Green
 Rhubarb—1 Watson
 Broad Beans—1 Watson, 2 Green
 Onions (Spring)—1 Green
 (Autumn)—1 Green, 2 Watson
 Lettuces—1 Green, 2 Mr. C. Ellis
 Peas—1 Green
 Potatoes (round)—1 Green
 (kidney)—1 Green, 2 Watson
 Apples (new)—1 Green, 2 Mrs. Thornton
 Gooseberries—1 Green, 2 Thornton
 Raspberries—1 Green, 2 Thornton
 Strawberries—1 Green
 Currants (white)—1 Green
 (red)—1 Green, 2 Thornton
 (black)—1 Watson, 2 Thornton
 Bouquet of Wild Flowers—1 Kathleen Fox, 2 Elsie
 Crossland, 3 Annie Bullers
 Best Tray of Vegetables—Green
 OPEN CLASS.
 Best Tray of Vegetables—1 Rev. Hill, 2 Mr. Woodsend

SPECIAL PRIZES.

Doncaster & Son—1 Green, 2 Millington
 Mather & Co.—1 Green, 2 J. Stanley
 Wadsworth's Prize—1 Millington
 Eggs—1 Rev. Hill, 2, Mr. D. Gower
 Garden Design—1 Gower, 2 A Shipman
 Premier Potatoes (round)—1 Mr. Woodsend
 (kidney)—1 Mr. E. N. Sears
 Special Merit, Bunches of Grapes—Miss Fox

BEEES AND HONEY.

Best Sections—Mr. D. Gower, Mrs. Cartwright, equal
 Firsts, 2 Mr. Plowright
 Best Run Honey—1 Mr. Dolman, 2 Mr. North, 3 Mr. Bond
 Best Hive of Bees—1 Mr. J. Higgs, 2 Mr. D. Gower

SPORTS.

100 Yards Handicap—1 R. Moss, 2 Brewster, 3 G. Bateman
 Long Jump—1 E. E. Coville, 2 G. Bateman, 3 Mingay
 440 Yards Handicap—1 T. Fisher, 2 Wright, 3 Jaffes.
 Ladies' Race, 80 yards—1 R. Wilkinson, 2 O. Pratt,
 3 M. Allwood.
 High Jump—1 H. Hall, 2 H. Bateman, 3 R. Moss.
 Pole Jump—1 E. Coville, 2 G. Bateman, 3 R. Moss.
 1 Mile Flat Race—1 C. Freestone, 2 Wright, 3 Bateman
 Walking Race—1 A. Pacey, 2 Carter, 3 W. Bateman
 Flat Race, Boys under 14—1 W. Lodder, 2 V. Manchester, 3 P. Seward.
 Flat Race, Girls' under 14—1 M. Wilkinson, 2 D. Bullimore, 3 E. Bullimore.

EXTRACTS FROM PARISH REGISTERS.

BURIAL.

July 14th. Hannah Crossland, aged 84 years.



Time Table for East Bridford of Trains to and from Nottingham, for August and September, 1913.

Leave Bingham.		Leave Lowdham.		Arrive Nottingham		Leave Nottingham.		Arrive Bingham. Lowdham.	
				G.N.R.	M.R.	G.N.R.	M.R.	Bingham.	Lowdham.
				Victoria.		Victoria.			
—	6.58	—	—	—	7.18	5.25	—	5.48	—
7.30	—	—	—	7.54	—	—	6.0	—	6.19
—	7.46	—	—	—	8.5	—	6.28	—	6.47
8.20	—	—	—	8.45	—	7.15	—	7.38	—
—	8.25	—	—	—	8.45	—	7.20	—	7.39
—	8.59	—	—	—	9.20	*8.10	—	8.34	—
9.4	—	—	—	9.28	—	—	8.32	—	8.51
*9.43	—	—	—	10.6	—	9.25	—	9.48	—
9.51	—	—	—	10.12	—	*10.25	—	10.47	—
—	9.56	—	—	—	10.22	—	11.25	—	11.46
—	11.20	—	—	—	11.42	11.50	—	12.13	—
11.59	—	—	—	12.23	—	—	12.45 <i>except Sat.</i>	—	1.3
—	1.35 <i>except Sat.</i>	—	—	—	1.55	—	1.5	—	1.24
*1.40	—	—	—	2.4	—	* 1.50	—	2.13	—
2.1	—	—	—	2.25	—	—	2.0	—	2.18
—	2.4	—	—	—	2.27	2.8	—	2.26	—
—	2.27	—	—	—	2.47	2.43	—	3.6	—
—	3.25 <i>holidays</i>	—	—	—	3.40	—	2.58	—	3.19
*3.30	—	—	—	5.54	—	4.12 <i>Saturdays</i>	—	4.33	—
—	4.22	—	—	—	4.40	—	4.40	—	4.59
—	4.42	—	—	—	5.3	* 5.0	—	5.23	—
4.54	—	—	—	5.18	—	—	6.10	—	6.29
5.7 <i>Saturdays</i>	—	—	—	5.30	—	6.15	—	6.38	—
—	6.36	—	—	—	6.55	—	6.43	—	7.4
6.44	—	—	—	7.8	—	—	7.45	—	8.4
—	7.51	—	—	—	8.12	7.40	—	8.6	—
*9.2	—	—	—	9.26	—	8.47	—	9.13	—
9.10	—	—	—	9.34	—	—	9.20	—	9.38
—	9.42 <i>Saturday</i>	—	—	10.2	—	9.55	—	10.19	—
—	10.5 <i>except Saturday</i>	—	—	10.25	—	—	11.15 <i>Thur. & Sat.</i>	—	11.36
—	10.15 <i>Saturday</i>	—	—	10.35	—	11.0 <i>Wed. and Sat.</i>	—	11.24	—

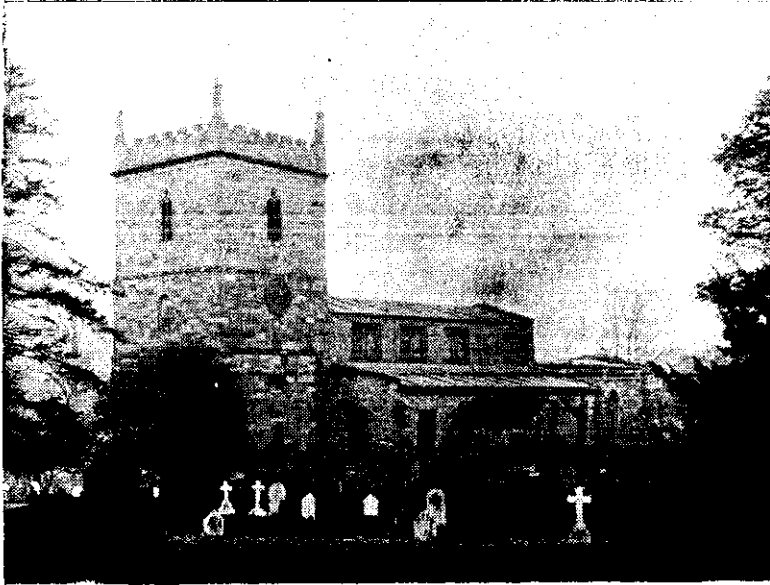
SUNDAYS.

9.15	—	9.40	—	8.27	—	8.52	—
—	12.41	—	1.0	—	10.10	—	10.29
3.3	—	3.27	—	11.40	—	12.4	—
4.55	—	5.18	—	2.10	—	2.33	—
—	6.48	—	7.10	—	2.50	—	3.9
8.35	—	9.0	—	6.3	—	6.28	—
—	8.12	—	8.33	—	8.10	—	8.29
—	—	—	—	9.58	—	10.20	—

*Newark trains.

N.B.— All the G.N.R trains stop at London Road (High Level Station) as well as at the Victoria Station.

EAST BRIDGFORD MAGAZINE.



St. Peter's Church, East Bridgford.

Services.

HOLY COMMUNION:—

On all SUNDAYS (except 1st in Month) and HOLY DAYS at 8 a.m.
and after Morning Prayer on the First Sunday in the Month.

MORNING AND EVENING PRAYER:—

Sundays at 10.45, and 6.30 p.m.

Weekdays at 8 a.m. (Wednesday and Friday at 10), and 6.30 p.m. daily.

HOLY BAPTISM:—

Second Sunday in month at 3, or at other Services on due notice.

CHURCHING OF WOMEN:—

Wednesday and Friday at 10, or before any Service on due notice.

SUNDAY SCHOOL:—

At 10 a.m. in the National School.

Children's Service and Catechizing in Church at 2.30.

We have now been watching the work that is being carried out in our Church for more than two months, and no doubt have felt dismayed at the dilapidated wreck that it now seems to be. But we must remember that all this while the new stonework and timber is being prepared, and will soon be ready to be placed in position. Meantime, the work has chiefly been carried on by Bridgford men, under the direction of our very capable foreman, Mr. Middleton. The pillars of the South Arcade, which were in a most dangerous condition, have been strengthened by new bases being inserted, which stand on four feet of concrete. The south-east angle has been strengthened by buttresses and will now give the necessary support to the chancel arch.

New oak roofs are to be placed over the Nave and the two aisles, and a parapet will be built on the top of the walls, instead of the former mean-looking eaves.

The upper windows, or "Clerestory" of the Nave, will be restored to what we believe to be their original condition with three lights and cusped heads, which will add a great deal to the beauty of the building.

When the Church was repaired in 1778 as recorded upon the tablet on the Tower, it was very much altered in appearance. The re-building was done very solidly and well, but the builders of that date had little artistic taste and no respect for the architecture of the old church.

The tower was re-built and a fine arch opening into the nave was destroyed. There were formerly north and south transepts, so that the Church was in the form of a cross, with arms extending north and south. These were pulled down, and of course we cannot now build them up again, but a new south gable will show where the south transept stood. The window to the west of the porch is an old one, very much spoilt, but it will be restored and the four other windows of the south aisle will be new ones to correspond, as also the west window of the north aisle, replacing the very plain openings made in 1778.

A most interesting stone should be noticed, which has been built into the N.E. buttress so as to exhibit the interlacing strap-work ornament carved upon two of its sides. It is a portion of the shaft of an ancient Saxon Cross about 10 feet in height, which must have been erected in the Churchyard at least a 1,000 years ago. It was probably still standing in 1645, for the following entry in the Registers may refer to it:—

Nov. 5. *Georgius Hastelom maritus sororis Ogle prope crucem in coemiterium.*

There were three burials on the same day, and the position of the graves is curiously mentioned; the Parson of Wanlip was buried in the Chancel, Elizabeth Braunston to the east of the chancel, and "George Hastelom, husband of Ogle's sister, near the Cross in the Churchyard." Soon after this the cross, like many other beautiful Christian symbols and ornaments, was, we may suppose, broken down, this piece of it being preserved through having been built into a window-arch. The carving upon the two other sides is destroyed. Another portion is built into the wall on the interior of the bell chamber.

The bells and clock chimes are greatly missed, but it is hoped that before long they will again be heard. The timber of the bell frame was in quite a dangerous condition, and it is now proposed to use iron girders to support the bells.

We must still go on making our appeal for contributions to the Restoration Fund, and hope that all who look forward to offering their worship in our restored Church will give what they can themselves now, and ask their friends for help as well. Contributions may be placed in the box in the Church porch or sent to the Rector.

CHURCH RESTORATION FUND.

		£	s.	d.			£	s.	d.	
Amount acknowledged July 1913	1539	4	7		Miss Pattenden	1	1	0	
Mr. E. F. Robinson	5	0		Mr. R. Foster	5	5	0	
H.H.H H.H.H.	5	0		Mrs. Heymann	1	0	0	
Miss Robinson	2	10		Rev N. J. Miller	3	3	0	
Sir A. P. Heywood	1	1		Mr. W. Rowley	5	0		
B.	2	6		Captain M. H. Hall!..	..	1	1	0	
Mr. W. Mussell	5	0		Canon W. L. B. Cator	10	0		
Mr. W. Gell	1	1		Mrs Obbard	1	1	0	
Mr. J. Wigram	1	1		Miss E. J. Chevallier	10	6		
Mr. J. Spalding	2	2		Mr. F. T. Perry	10	0		
Card (H. Cloxton)	5	0		Mr. T. M. Blagg	10	0		
Canon V. Jackson	1	1							
Mr. H. Wyles	2	0							
Mr. C. R. S. Pattenden	5	5							
							Total, Sept. 1st. 1913	£1575	14	7

There are still a few cases of Scarletina amongst the children and every care will be taken to isolate them; but the Medical Officer does not consider that it is necessary to close the school, which re-opens on September 1st, after a month's holiday.

Nurse Davis has left East Bridgford for a post in Peterborough, after a year and eight month's good work in this district.

A very welcome rain came on August 22nd, when above an inch of rainfall was measured. We have had an almost entire absence of rain since May; and the procession of water-carts from the Trent has more than ever been bearing its annual testimony to the inadequacy of the water supply of East Bridgford.

It is proposed to hold our Harvest Thanksgiving Services on Sunday, Sept. 21st. There will be a celebration of Holy Communion at 7 o'clock and 9.30 (choral), and the usual services in the School at 10.45 and 6.30.

The Harvest Offerings will be given to the Church Restoration Fund.

CRICKET CLUB.—The following are the results of the matches played during July and August:—

July 1.	East Bridgford	127	Whatton 68 (8 wks.) (Home)
" 7.	"	67	City Police 100 (Home)
" 12.	"	118	Tithby 41 (Home)
" 19.	"	37	Shelford 24 (Away)
Aug. 2.	"	71	Lowdham 47 (Away)
" 5.	"	54	Netherfield 58 (Home)
" 21.	"	125	Notts County
			Asylum 86 (9 wks.) (Away)

EXTRACTS FROM PARISH REGISTERS.

BURIAL.

Aug. 25th. Betsy Foster, aged 84 years.

Time Table for East Bridgford of Trains to and from Nottingham, for August and September, 1913.

Leave Bingham.		Leave Lowdham.		Arrive Nottingham		Leave Nottingham.		Arrive Bingham.	
				G.N.R.	M.R.	G.N.R.	M.R.	Bingham.	Lowdham.
				Victoria.		Victoria.			
—	6.58	—	7.18	—	—	5.25	—	5.48	—
7.30	—	7.54	—	—	6.0	—	6.0	—	6.19
—	7.46	—	8.5	—	6.28	—	6.28	—	6.47
8.20	—	8.45	—	—	7.15	—	7.15	7.38	—
—	8.25	—	8.45	—	7.20	—	7.20	—	7.39
—	8.59	—	9.20	—	*8.10	—	8.10	8.34	—
9.4	—	9.28	—	—	8.32	—	8.32	—	8.51
*9.43	—	10.6	—	—	9.25	—	9.25	9.48	—
9.51	—	10.12	—	—	*10.25	—	10.25	10.47	—
—	9.56	—	10.22	—	—	11.25	11.25	—	11.46
—	11.20	—	11.42	—	11.50	—	11.50	12.13	—
11.59	—	12.23	—	—	—	12.45	except Sat.	—	1.3
—	1.35	except Sat.	—	1.55	—	1.5	—	—	1.24
*1.40	—	2.4	—	—	* 1.50	—	—	2.13	—
2.1	—	2.25	—	—	—	2.0	—	—	2.18
—	2.4	—	2.27	—	2.8	—	—	2.26	—
—	2.27	—	2.47	—	2.43	—	—	3.6	—
—	3.25	Fridays	—	3.40	—	2.58	—	—	3.19
*3.30	—	3.54	—	—	4.12	Saturdays	—	4.33	—
—	4.22	—	4.40	—	—	4.40	—	—	4.59
—	4.42	—	5.3	—	* 5.0	—	—	5.23	—
4.54	—	5.18	—	—	—	6.10	—	—	6.29
5.7	Saturdays	5.10	—	—	6.15	—	—	6.38	—
—	6.36	—	6.55	—	—	6.43	—	—	7.4
6.44	—	7.8	—	—	—	7.45	—	—	8.4
—	7.51	—	8.12	—	7.40	—	—	8.6	—
*9.2	—	9.26	—	—	8.47	—	—	9.13	—
9.10	—	9.34	—	—	—	9.20	—	—	9.38
—	9.42	Saturday	10.2	—	9.55	—	—	10.19	—
—	10.5	except Saturday	10.25	—	—	11.15	Thur. & Sat.	—	11.36
—	10.15	Saturday	10.35	—	11.0	Wed. and Sat.	—	11.24	—

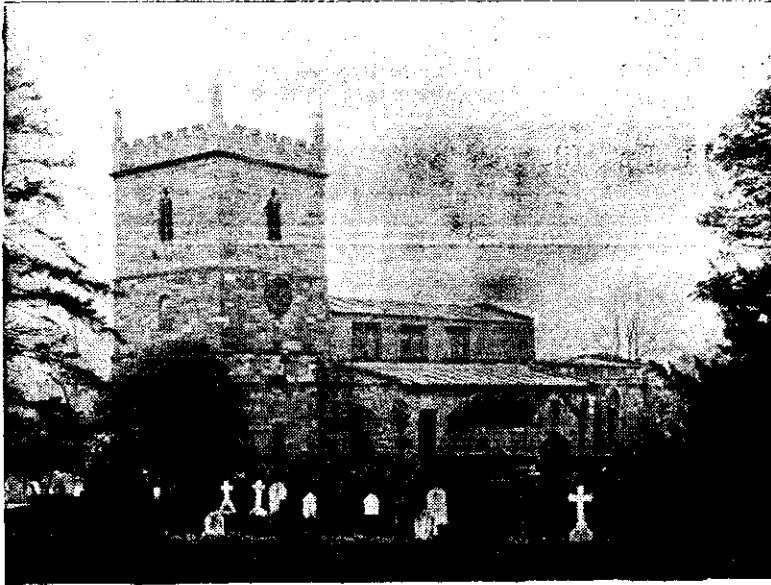
SUNDAYS.

9.15	—	9.40	—	8.27	—	8.52	—
—	12.41	—	1.0	—	10.10	—	10.29
3.3	—	3.27	—	11.40	—	12.4	—
4.55	—	5.18	—	2.10	—	2.33	—
—	6.48	—	7.10	—	2.50	—	3.9
8.35	—	9.0	—	6.3	—	6.28	—
—	8.12	—	8.33	—	8.10	—	8.29
—	—	—	—	9.58	—	10.20	—

*Newark trains.

N.B.—All the G.N.R. trains stop at London Road (High Level Station) as well as at the Victoria Station.

EAST BRIDGFORD MAGAZINE.



St. Peter's Church, East Bridgford.

Services.

HOLY COMMUNION :—

On all SUNDAYS (except 1st in Month) and HOLY DAYS at 8 a.m. and after Morning Prayer on the First Sunday in the Month.

MORNING AND EVENING PRAYER :—

Sundays at 10.45, and 6.30 p.m.

Weekdays at 8 a.m. (Wednesday and Friday at 10), and 6.30 p.m. daily.

HOLY BAPTISM :—

Second Sunday in month at 3, or at other Services on due notice.

CHURCHING OF WOMEN :—

Wednesday and Friday at 10, or before any Service on due notice.

SUNDAY SCHOOL :—

At 10 a.m. in the National School.

Children's Service and Catechizing in Church at 2.30.

On Monday, September 15th, a little ceremony was performed in the National School, of a nature which was very pleasing to those principally concerned. In recognition of the "Silver wedding" of the Rector and Mrs. Hill a presentation was made to them on behalf of a number of parishioners, of a beautiful silver inkstand and pair of candlesticks. The inkstand bears the following inscription:—

Presented to the Rev. Arthur Du Boulay and Mrs. Hill by Parishioners of East Bridgford,
with love and respect as a memento of their Silver Wedding Day,
September 18th, 1913.

Mrs. Milward, with a suitable speech, and supported by Mr. Goldston, made the presentation, which will be followed by a list of Subscribers names in a suitable frame.

The Rector and Mrs. Hill wish to thank personally the contributors to this beautiful gift, but take this opportunity of expressing to them all how deeply they appreciate the kind thoughts and affection, of which it will always stand as a token.

The work of the Restoration of the Church progresses, and by the time the Magazine is printed, not only the six new clerestory windows will be completed but probably part of the new roof will be in position. The process of re-casting the lead for the roof has been carried on during the last few weeks in the Churchyard. This is a very interesting revival of an old method, and it is found that cast lead is much more durable than the milled or rolled lead which is now commonly used.

The funds are increasing gradually, and have now reached £1,609. We must go on reminding everyone that the whole sum required is at least £2,000, and that small as well as large contributions are needed now that our heavy expenditure is being made.

CHURCH RESTORATION FUND.

	£	s.	d.
Amount Acknowledged, Sept., 1913	1575	14	7
Ven. Archdeacon of Nottingham ..	1	0	0
Mr. J. R. Starkey, M.P. ..	2	2	0
Mr. J. Pickford ..	1	0	0
Dr. T. M. Walker ..	10	0	0
E.E.W. ..	1	0	0
Harvest Offerings, Sept. 21st ..	10	12	4
Miss Barker (Harvest Offering) ..	10	0	0
Rev. E. B. Hill ..	3	3	0
A Thank-offering ..	1	0	0
Mrs. Squarey ..	2	2	0
Church Box, July-September ..	18		1
	£1609	2	0

The Committee of the Temperance Hall drew up last year the following scale of charges for the use of the Hall:—

1. Parties (with use of crockery and hot water) 2d. per head for first 100, 1d. each for all over that number.
2. Concert, Dance, Entertainment, Political Meeting, Property or Furniture Sale 10/-.
3. Denominational Tea and Public Meeting (with use of pots, cloths, fire, etc., but not including attendance and washing up) 5/-.
4. Jumble Sale, 5/-.
5. Classes, 5/-.
6. Evening Local Meetings (Choral, Missionary, Temperance, Parish, Friendly Societies) 3/-.

HARVEST THANKSGIVING.—Since we are unable to use the Nave of our Church, the Harvest Festival Services this year were of necessity less distinctly marked than is usually the custom. Fortunately we are able to use the Chancel, and the Holy Eucharist was celebrated there at 7 and at 9.30, the latter service being choral. The other services were held in the Schoolroom; and the absence of a decorated church, and the bells, must have made it seem less of a festival, but it is to be hoped not less a thanksgiving. The thank-offerings during the day amounted to £10 12s. 4d. for the Church Restoration Fund.

The King Edward Club opened for the winter season on September 27th. Last year the membership reached the satisfactory number of 49, and the accounts for the year's working expenses show a balance of 6/- in hand.

CRICKET CLUB.—Matches played during September:—

September 6th.	East Bridgford 50.	Farnsfield 57.
.. 13th.	.. 93 for 6 wks.	Bingham 1st, 88.

The match against Bingham 1st, which closed the season with a victory for East Bridgford, is noticeable for the batting of Edward Manchester, 41 not out, and R. Richardson 34; and the bowling of P. Goldston who took 5 wickets for 27 runs.

During the past season 17 matches have been played, of which 11 were won, 4 lost, and 2 unfinished.

CHORAL SOCIETY.—A general meeting was held on Monday, Sept. 22nd, in the Schoolroom, the Rev. A. D. Hill, the President, being in the Chair. Mr. R. C. Richardson was appointed Secretary, Miss Fox, Treasurer, and Miss Sharpe, Accompanist. Mr. Usborn of Thurgarton Priory has again kindly undertaken the post of Conductor.

It is arranged that the first practice is to be held on Monday, October 13th, at 7.30 p.m. in the Temperance Hall, and that a selection from the Messiah shall be performed at Christmas, and "Faust" at a concert in the next year. The subscription is 2/6, to include music.

EXTRACTS FROM PARISH REGISTERS.

MARRIAGES.

Sep 8th. Herbert Richards and Elizabeth Dawn.

Time Table for East Bridgford of Trains to and from Nottingham, for October, 1913.

Leave Bingham.		Leave Lowdham.		Arrive Nottingham G.N.R. Victoria. M.R.		Leave Nottingham, G.N.R. Victoria. M.R.		Arrive Bingham. Lowdham.	
—	—	6.58	—	—	7.18	5.25	—	5.48	—
7.30	—	—	—	7.54	—	—	6.0	—	6.19
—	—	7.46	—	—	8.5	—	6.28	—	6.47
8.20	—	—	—	8.45	—	7.15	—	7.38	—
—	—	8.25	—	—	8.45	—	7.20	—	7.39
—	—	8.59	—	—	9.20	*8.10	—	8.34	—
9.4	—	—	—	9.28	—	—	8.32	—	8.51
*9.43	—	—	—	10.6	—	9.25	—	9.48	—
9.51	—	—	—	10.12	—	*10.25	—	10.47	—
—	—	9.56	—	—	10.22	—	11.25	—	11.46
—	—	11.20	—	—	11.42	11.50	—	12.13	—
11.59	—	—	—	12.23	—	—	12.45 <i>except Sat.</i>	—	1.3
—	—	1.35 <i>except Sat.</i>	—	—	1.55	—	1.5	—	1.24
*1.40	—	—	—	2.4	—	*1.50	—	2.13	—
2.1	—	—	—	2.25	—	—	2.0	—	2.18
—	—	2.4	—	—	2.27	2.8	—	2.26	—
—	—	2.27	—	—	2.47	2.43	—	3.6	—
—	—	3.25 <i>Fridays</i>	—	—	3.40	—	2.58	—	3.19
*3.30	—	—	—	3.54	—	4.12 <i>Saturdays</i>	—	4.33	—
—	—	4.22	—	—	4.40	—	4.40	—	4.59
—	—	4.48	—	—	5.10	*5.0	—	5.23	—
4.54	—	—	—	5.18	—	—	6.10	—	6.29
5.7	<i>Saturdays</i>	—	—	5.30	—	6.15	—	6.38	—
—	—	6.36	—	—	6.55	—	6.43	—	7.4
6.44	—	—	—	7.8	—	—	7.45	—	8.4
—	—	7.51	—	—	8.12	7.40	—	8.6	—
*9.2	—	—	—	9.26	—	8.47	—	9.13	—
9.10	—	—	—	9.34	—	—	9.20	—	9.38
—	—	9.42	<i>Saturday</i>	—	10.2	9.55	—	10.19	—
—	—	10.5	<i>except Saturday</i>	—	10.25	—	11.15	<i>Thur. & Sat.</i>	11.36
—	—	10.15	<i>Saturday</i>	—	10.35	11.0	<i>Wed. and Sat.</i>	11.24	—

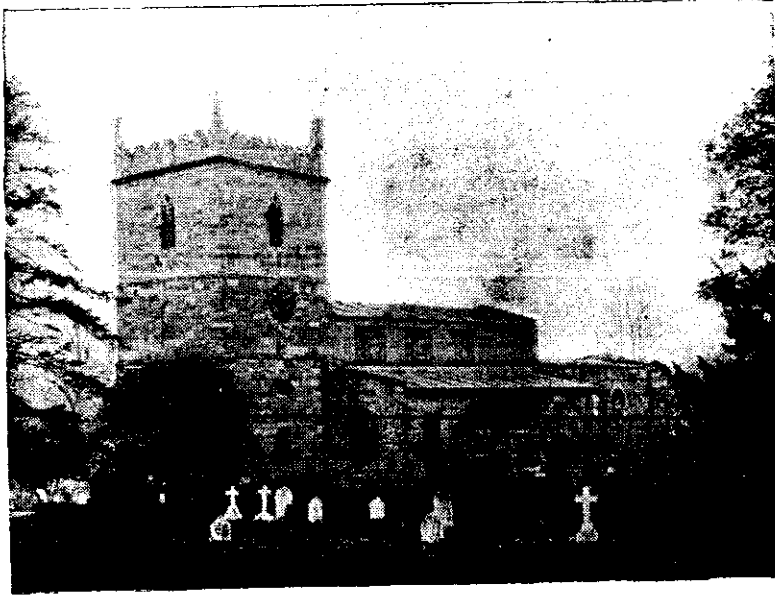
SUNDAYS.

—	12.41	—	1.0	—	10.10	—	10.29
3.3	—	3.27	—	11.40	—	12.4	—
4.55	—	5.18	—	2.10	—	2.33	—
—	6.48	—	7.10	6.3	—	6.28	—
8.35	—	9.0	—	—	8.10	—	8.29
—	—	—	—	9.58	—	10.20	—

*Newark trains.

N.B.— All the G.N.R. trains stop at London Road (High Level Station) as well as at the Victoria Station.

EAST BRIDGFORD MAGAZINE.



St. Peter's Church, East Bridgford.

Services.

HOLY COMMUNION:—

On all SUNDAYS (except 1st in Month) and HOLY DAYS at 8 a.m.
and after Morning Prayer on the First Sunday in the Month.

MORNING AND EVENING PRAYER:—

Sundays at 10.45, and 6.30 p.m.

Weekdays at 8 a.m. (Wednesday and Friday at 10), and 6.30 p.m. daily.

HOLY BAPTISM:—

Second Sunday in month at 3, or at other Services on due notice.

CHURCHING OF WOMEN:—

Wednesday and Friday at 10, or before any Service on due notice.

SUNDAY SCHOOL:—

At 10 a.m. in the National School.

Children's Service and Catechizing in Church at 2.30.

CHURCH RESTORATION FUND.

	£	s.	c.
Amount Acknowledged, Sept., 30th. 1609	2	0	0
Mrs. Dakeyne	2	10	0
Servants at Bridgford Hill	1	0	0
Mrs. Rowe	2	2	0
Mr. E. Upton	2	2	0
Church Box, October	3	10	0
Total Oct. 27th, 1913	£1620	12	0

During the last month the roof of the nave has been put up, and is now covered in. Satisfactory progress has also been made with the parapet of the nave so that we may begin to gain some idea of its appearance when completed.

Many articles that were left over from the Sale in the spring are still waiting to be purchased by those who would like to lay out a little money in this way for the benefit of the Church. Applications should be made to Mrs. Hill, at the Rectory.

CHURCH OF ENGLAND MEN'S SOCIETY.—The annual Conference of Delegates was held this year at Cardiff, on Oct. 16th, when over a thousand delegates attended from all parts of England and Wales. It was in one sense a very touching meeting, for a gloom of sorrow was over the city. Cardiff is only twelve miles from the Aber Vale where the terrible mining disaster had occurred in the Senghennyd Pit only two days before the meeting. But it was also an inspiring meeting, for the delegates were enthusiastic representatives of a Society now in its fifteenth year of existence, with an aggregate membership of 130,000 at home and overseas, and were deeply conscious of the force of united work and purpose. It is well that small local branches should be aware that they do not stand alone. It is never the plan of the society to press for mere numbers, but it is always ready to welcome those who, as communicants of the Church of England, are willing to help forward the work of the church.

Our East Bridgford branch held its first meeting for the winter on October 20th, and a Service for the admission of new members was held in the Chancel at 3 p.m., on Sunday, Oct. 26th. Full particulars of the objects of the Society may be obtained from Mr. Goldston, the secretary.

We deeply regret to record the death of Mr. David Gower, who, as a Sidesman of the church, and a member of the church council, took a full part in church work in the parish.

There are twenty-seven Sundays after Trinity this year; and consequently as the Collect, Epistle and Gospel for the twenty-fifth Sunday, (Nov. 9th,) and the twenty-sixth Sunday, (Nov. 16th,) we shall use those appointed for the fifth and sixth Sunday after the Epiphany.

ADVENT SUNDAY falls this year on Nov. 30th, S. Andrew's Day. There will be a celebration of the Holy Communion, with Music, at half-past nine, in the chancel.

CHURCH DEFENCE.—Three lectures will be delivered during November, at Bingham, giving information about the Continuity of the Church of England, and the history of its Endowments.

These lectures are free to any who wish to learn about these matters, which are now so much before us; and will be given at 3 p.m., on Wednesday, Nov. 5th, 12th, and 26th, at the Rectory, Bingham, by the Rev. A. E. Clarke, M.A., Rector of Sawley.

The Annual meeting of the Bible Society will be held on Wednesday, November the 19th, in the Temperance Hall, at 7 p.m., when the Rev. A. Lloyd Phillips, Vicar of Blyth, will give an address.

The East Bridgford Total Abstinence Society began its meetings with a Social evening on Oct. 7th, and will continue to hold meetings fortnightly on Tuesdays at 7 p.m.

The Mothers' Union held its quarterly meeting on Wednesday, Oct. 8th. It was decided to continue the plan adopted last year of holding monthly meetings during the winter.

The G.F.S. has begun its winter work with a meeting at the Rectory on Oct. 28th. Miss Allister, Miss Jones, Miss Poole and Miss E. Euerby were appointed a Committee of Management, with Miss Jesson as Secretary.

The Mothers' Meetings at the Rectory will begin on Thursday, Nov. 6th, and will continued weekly.

EXTRACTS FROM PARISH REGISTERS.

BURIALS.

- Oct. 7th. Nellie Beaumont, aged 29 years.
- Oct. 11th. David Gower, aged 57 years.
- Oct. 22nd. Alice Green, aged 87 years.

Time Table for East Bridgford of Trains to and from Nottingham, for November, 1913.

		Arrive Nottingham		Leave Nottingham.		Arrive	
Leave Bingham.	Leave Lowdham.	G.N.R. Victoria.	M.R.	G.N.R. Victoria.	M.R.	Bingham.	Lowdham.
—	6.58	—	7.18	5.25	—	5.48	—
7.30	—	7.54	—	—	6.0	—	6.19
—	7.46	—	8.5	—	6.28	—	6.47
8.20	—	8.45	—	7.15	—	7.38	—
—	8.25	—	8.45	—	7.20	—	7.39
—	8.59	—	9.20	*8.10	—	8.34	—
9.4	—	9.28	—	—	8.32	—	8.51
*9.43	—	10.6	—	9.25	—	9.48	—
9.51	—	10.12	—	*10.25	—	10.47	—
—	9.56	—	10.22	—	11.25	—	11.46
—	11.20	—	11.42	11.50	—	12.13	—
11.59	—	12.23	—	—	12.45 <i>except Sat.</i>	—	1.3
—	1.35 <i>except Sat.</i>	—	1.55	—	1.5	—	1.24
*1.40	—	2.4	—	* 1.50	—	2.13	—
2.1	—	2.25	—	—	2.0	—	2.18
—	2.4	—	2.27	2.8	—	2.26	—
—	2.27	—	2.47	2.43	—	3.6	—
—	3.25 <i>Fridays</i>	—	3.40	—	2.58	—	3.19
*3.30	—	3.54	—	4.12 <i>Saturdays</i>	—	4.33	—
—	4.22	—	4.40	—	4.40	—	4.59
—	4.48	—	5.10	* 5.0	—	5.23	—
4.54	—	5.18	—	—	6.10	—	6.29
5.7 <i>Saturdays</i>	—	5.30	—	6.15	—	6.38	—
—	6.36	—	6.55	—	6.43	—	7.4
6.44	—	7.8	—	—	7.45	—	8.4
—	7.51	—	8.0	7.40	—	8.6	—
*9.2	—	9.26	—	8.47	—	9.13	—
9.10	—	9.34	—	—	9.20	—	9.38
—	9.42 <i>Saturday</i>	—	10.2	9.55	—	10.19	—
—	10.5 <i>except Saturday</i>	—	10.25	—	11.15 <i>Thur. & Sat.</i>	—	11.36
—	10.15 <i>Saturday</i>	—	10.35	11.0 <i>Wed. and Sat.</i>	—	11.24	—

SUNDAYS.

—	12.41	—	1.0	—	10.10	—	10.29
3.3	—	3.27	—	11.40	—	12.4	—
4.55	—	5.18	—	2.10	—	2.33	—
—	6.48	—	7.10	6.3	—	6.28	—
8.35	—	9.0	—	—	8.10	—	8.29
—	—	—	—	9.58	—	10.20	—

*Newark trains.

N.B.—All the G.N.R. trains stop at London Road (High Level Station) as well as at the Victoria Station.

EAST BRIDGFORD MAGAZINE.



St. Peter's Church, East Bridgford.

Services.

HOLY COMMUNION :—

On all SUNDAYS (except 1st in Month) and HOLY DAYS at 8 a.m. and after Morning Prayer on the First Sunday in the Month.

MORNING AND EVENING PRAYER :—

Sundays at 10.45, and 6.30 p.m.

Weekdays at 8 a.m. (Wednesday and Friday at 10), and 6.30 p.m. daily.

HOLY BAPTISM :—

Second Sunday in month at 3, or at other Services on due notice.

CHURCHING OF WOMEN :—

Wednesday and Friday at 10, or before any Service on due notice.

SUNDAY SCHOOL :—

At 10 a.m. in the National School.

Children's Service and Catechizing in Church at 2.30.

ADVENT.—We shall not be able to hold any special evening services during the weeks of this Advent on account of the work of restoration of the church now going on; but evensong is said daily at 6.30 p.m. in the Chancel, and on Sundays the Holy Communion is celebrated in the Chancel, and Morning and Evening Prayer with sermons in the School.

But though the help of special Advent services is not available, do not let us forget the main lessons of this Advent season. First and foremost it is a time of preparation for Christmas. Not of course merely in the world's sense of Christmas—a time of festivities and good cheer, but because the festival of Christmas brings before us the most solemn truth, the deepest mystery, of our Christian faith, that God came down to take upon him man's nature,—that Jesus Christ was Incarnate, and born of the Virgin Mary. Surely this is something that we need to think about more seriously as we draw near to the Festival of Christmas, and welcome in our worship the Saviour of mankind.

And secondly, when we speak of His first coming, no one who thinks at all can help having his mind led on to consider His second coming as the judge of mankind. Surely this too is something that we need to think about more seriously. We need to ask ourselves, as the end draws nearer for each of us, whether we are trying to be better men and women, or have paid no heed to the matter. Let these thoughts be in our minds during Advent.

FOREIGN MISSIONS, S.P.G.—During Advent, the subject of Missionary work will be brought before us. A meeting will be held on Friday, December 19th, in the Temperance Hall at 7 p.m., when a lecture will be given by the Rev. F. W. Wilkinson, of Adelaide.

On Sunday, Dec. 21st, a sermon will be preached in the morning, at the service held in the School, by the Rev. H. Gomes, of Borneo. The alms at all the services will be in aid of the Society for the Propagation of the Gospel in Foreign Parts.

We shall sorely miss our bells this Christmas, but we must exercise a discriminating patience, and console ourselves with the thought that it will be better that the re-opening of the Church after its restoration, and the re-opening of the restored bells, should take place together. It would be impossible to hold a suitable service, as we ought to do, until the Church is ready.

The Work of the Church Restoration is making good progress, and builders, joiners, plumbers, and woodcarvers, are all fully employed now. We have to raise at least £2,000: will there not be some who will set themselves to help make the fund creep up to £1,700 before the end of the year, by sending in their contributions now, and trying to get their friends to help as well?

CHURCH RESTORATION FUND.

	£	s.	d.
Amount Acknowledged, Nov. 1913.	1620	12	0
Church Collections Nov. 1st. 2nd.	1	16	4
Mr. H. Gee..	10	0
Sale of old Material	12	0
Mr. R. Milward	2	0
Mr. H. E. Thornton	5	0
Rev. Dr. Walker	2	2
Sales of Work, etc.	2	16
		<u>7</u>	

Total Nov. 24th. 1913. £1635 8 11

ON CHRISTMAS DAY.—The Holy Communion will be celebrated at 8 and 11 o'clock, Mattins will be at 10 a.m., in the Chancel: and Evensong at 7 p.m., in the School. The Christmas offerings will be for the Restoration Fund.

THE NEW YEAR'S PARISH TEA.—will be held in the Temperance Hall on Wednesday, Jan. 7th, being the first Wednesday in the New Year. The arrangements will be as usual; Tea at 5 and 5.45., at 6d. a head. Parents with children under 12 *in their charge* can obtain a family ticket for 1/6.

Children not in charge of their parents can only be admitted to the second tea. An entertainment will be arranged to follow at 7 o'clock.

THE BAND OF HOPE will give their Entertainment on Tuesday, Dec. 9th, in the Temperance Hall.

The East Bridgford Choral Society announces a Christmas Concert to be held on Wednesday, Dec. 17th, at which Handel's Oratorio "The Messiah" will be performed. The tickets are to be at very low prices, and we hope many will make use of this opportunity of hearing this great musical masterpiece.

G.F.S.—The Association and members in East Bridgford contributed thirty-four pounds of groceries, which were sent on "Pound Day" to the G.F.S. Lodge at Nottingham.

TOTAL ABSTINENCE SOCIETY.—The next meeting is on December 2nd, when Mr. Harry Thompson, of Bingham will give an address. On Dec. 16th, the session is concluded by a social evening with music and light refreshments.

EAST BRIDGFORD PAROCHIAL ACCOUNTS.—Parishioners will be interested to see the following Summary of amounts received by Collections in Church, Contributions, &c., and Expended during the year ending Easter 1913. [This does not include any contributions to the Church Restoration.]

	£	s.	d.
Church Expenses (Churchwardens' Accounts)	89	19	5
Alms to Sick and Poor	10	13	9
Home Missions (A.C.S.)	7	0	0
Foreign Missions (S.P.G.)	19	8	8
Diocesan Missionary Studentship, Ascension Day, 1912	0	8	0
Mission to Jews (East London) Good Friday, 1913	1	14	0
Diocesan Sunday Fund, May 12th, 1912	6	3	0
Hospitals, Jan. 26th, 1913	5	15	6
Choir Outing, Aug., 1912	5	2	0
Southwell House, Ash Wednesday, 1913	0	9	7
Clothing Club Subscriptions	4	19	6
Coal Club Subscriptions	12	1	0
Sunday School	8	11	6
Coal Strike Fund, Easter Day, 1912	3	11	2
Church Building Society 1911—1912	1	0	6
Church Defence Fund, Dec. 15th, 1912	3	18	2
Ordination Candidates Fund (Embertide Box)	1	0	9
	<u>181</u>	<u>16</u>	<u>6</u>

A. D. HILL, Rector.

The annual meeting of the British and Foreign Bible Society was held in the Temperance Hall at 7 p.m., on Wednesday, Nov. 19th. The Rector occupied the chair, and the speaker on behalf of the society was the Rev. A. Lloyd Phillips, Vicar of Blyth. He spoke especially of the value of the work of the Bible Society to all missionary societies, in supplying translations of the Holy Scriptures into many languages. The Collection at the meeting amounted to £2 7s. 5d.; and the Secretary, Miss M. Robinson, who has taken over the office from Miss A. Clough, has been able to remit a total sum of £8 4s. 9d. to the Treasurer.

MARRIAGE.

October 17th. In S. Thomas' Cathedral, Bombay, Francis Charles Dixon and Ellen Theodora Fox

Time Table for East Bridgford of Trains to and from Nottingham, for November, 1913.

Leave Bingham.	Leave Lowdham.	Arrive Nottingham		Leave Nottingham.		Arrive Bingham. Lowdham.	
		G.N.R. Victoria.	M.R.	G.N.R. Victoria.	M.R.	Bingham.	Lowdham.
—	6.58	—	7.18	5.25	—	5.48	—
7.30	—	7.54	—	—	6.0	—	6.19
—	7.46	—	8.5	—	6.28	—	6.47
8.20	—	8.45	—	7.15	—	7.38	—
—	8.25	—	8.45	—	7.20	—	7.39
—	8.59	—	9.20	*8.10	—	8.34	—
9.4	—	9.28	—	—	8.32	—	8.51
*9.43	—	10.6	—	9.25	—	9.48	—
9.51	—	10.12	—	*10.25	—	10.47	—
—	9.56	—	10.22	—	11.25	—	11.46
—	11.20	—	11.42	11.50	—	12.13	—
11.59	—	12.23	—	—	12.45 <i>except Sat.</i>	—	1.3
—	1.35 <i>except Sat.</i>	—	1.55	—	1.5	—	1.24
*1.40	—	2.4	—	* 1.50	—	2.13	—
2.1	—	2.25	—	—	2.0	—	2.18
—	2.4	—	2.27	2.8	—	2.26	—
—	2.27	—	2.47	2.43	—	3.6	—
—	3.25 <i>Fridays</i>	—	3.40	—	2.58	—	3.19
*3.30	—	3.54	—	4.12 <i>Saturdays</i>	—	4.33	—
—	4.22	—	4.40	—	4.40	—	4.59
—	4.48	—	5.10	* 5.0	—	5.23	—
4.54	—	5.18	—	—	6.10	—	6.29
5.7 <i>Saturdays</i>	—	5.30	—	6.15	—	6.38	—
—	6.36	—	6.55	—	6.43	—	7.4
6.44	—	7.8	—	—	7.45	—	8.4
—	7.51	—	8	7.40	—	8.6	—
*9.2	—	9.26	—	8.47	—	9.13	—
9.10	—	9.34	—	—	9.20	—	9.38
—	9.42 <i>Saturday</i>	—	10.2	9.55	—	10.19	—
—	10.5 <i>except Saturday</i>	—	10.25	—	11.15 <i>Thur. & Sat.</i>	—	11.36
—	10.15 <i>Saturday</i>	—	10.35	11.0 <i>Wed. and Sat.</i>	—	11.24	—

SUNDAYS.

—	12.41	—	1.0	—	10.10	—	10.29
3.3	—	3.27	—	11.40	—	12.4	—
4.55	—	5.18	—	2.10	—	2.33	—
—	6.48	—	7.10	6.3	—	6.28	—
8.35	—	9.0	—	—	8.10	—	8.29
—	—	—	—	9.58	—	10.20	—

*Newark trains.

N.B.—All the G.N.R. trains stop at London Road (High Level Station) as well as at the Victoria Station.