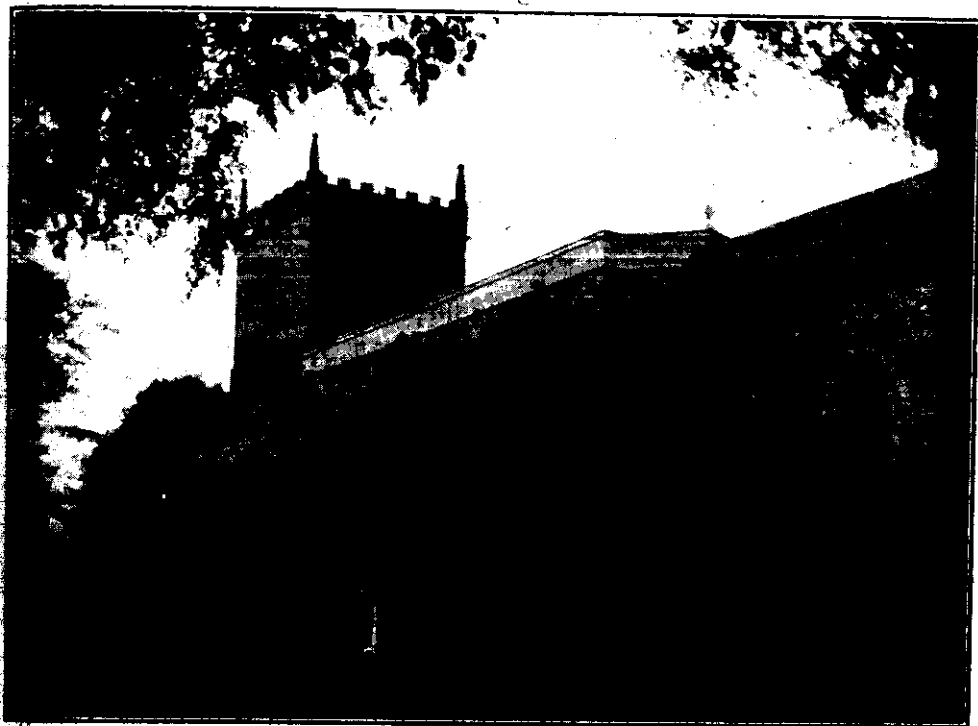


EAST BRIDGFORD MAGAZINE.



St. Peter's Church, East Bridgford.

Services.

HOLY COMMUNION:—

On all SUNDAYS (except last in Month) and HOLY DAYS at 8 a.m.
and after Morning Prayer on the First Sunday in the Month.

On the last Sunday in the Month : Matins at 10 ; Choral Eucharist 10.45.

MORNING AND EVENING PRAYER:—

Sundays at 10.45, and 6.30 p.m.

Weekdays, Wednesday and Friday at 10 and 6.30 p.m. daily.

HOLY BAPTISM:—

Second Sunday in month at 3, or at other Services on due notice.

CHURCHING OF WOMEN:—

Wednesday and Friday at 10, or before any Service on due notice.

SUNDAY SCHOOL AND CATECHISM:—

At 10 a.m. in the National School. Catechism in Church at 2.30.

1916.—Let us pray that God's blessing may rest on us all in the New Year, 1916 ; and especially that Peace may be restored to our own land, and to all the world.

NOTES FOR 1916.—Ash Wednesday, March 8th ; Easter Day, April 23rd ; Ascension Day, June 1st ; Whit-Sunday, June 11th.

Six Sundays after Epiphany. Twenty-three Sundays after Trinity.

There is one great effort that every one can make, and continue to make, more and more during the coming year, namely Economy. In order to meet whatever form of taxation or loan may be found necessary, we must prepare now to adapt our ourselves to changes of habits and customs, so that money shall be forthcoming without decreasing our national health or diminishing the children's food supply. Some no doubt can curtail "luxuries" : some have no luxuries to curtail. But all have to pay higher prices and to face reduced incomes. How much waste goes on by following "fashions" in dress : how much by unnecessary drinking habits : how much by not knowing how to choose and cook food to the best possible advantage ! It has been calculated that not less than an average of 1/- a week is wasted in every household by throwing away vegetable peelings and other valuable foodstuff. This amounts to a loss to the Nation of 26 million pounds a year ! How seldom we think that £1 spent on imported goods, instead of home-made, means a golden sovereign sent out of the country ! Waste injures our country and helps to prolong the war. To be effective, this economy must be practised by the whole nation.

Miss Clough proposes to continue her lessons on Food and Cookery. Particulars of time and place will be announced later.

A very striking letter has been written by Bishop Gwynne, H. M. Chaplain of Forces, appealing to those at home to remember that our men who return from the front have passed through solemn and heart-piercing experiences, have received deep impressions, and are looking for the help of influences such as they have not known before. People are untiring in their efforts to provide for them amusements and entertainments, and the men are appreciative and grateful. But this is not all they need, and is not always in tune with the feelings of the wounded and sick. Probably they will not be willing or able to express these feelings in words ; and it is not always necessary for them or for us to do so. It is however our duty at home to prepare for their return by ourselves gaining a more sympathetic insight into their new needs, and a truer spirit of kindness which will help them to feel that we too realize something of their spiritual experiences of the War.

The recruiting scheme carried out by Lord Derby has now been brought to a close and we shall soon learn the results and consequences of it. Meanwhile nearly all those of military age in East Bridgford have been attested under the scheme, as willing to be called up when required, or as desirous of submitting their claim for exemption upon reasonable grounds. George Widdison has enlisted in the S. Notts. Hussars. His Majesty King George has expressed to Lord Derby his hope that all attested men will wear the armet as a proof of their response to his call. We hope to see them displayed in East Bridgford.

The Church bells again sounded in a muffled peal on Dec. 5th on receipt of the sad news of the death of John Henry Upton, Pte. 2nd. Batt. Grenadier Guards, killed in action in Flanders, Nov. 22nd, aged 33 years.

The call of the Archbishops of Canterbury and York to set apart certain days for Repentance and Prayer engaged our attention as we passed from the old year into this New Year 1916. *The first Sunday of the New Year*, Jan. 2nd, was appointed as a day for solemn intercession to Almighty God, and for thankful recognition of the devotion which has been forthcoming from both men women of this country. In preparation for the right use of so solemn an occasion, Friday, Dec. 31st, was observed as a day of prayer and penitence for the sins of which as a people we are conscious. A special service at 3.15 in Church, the shopkeepers of East Bridgford agreeing to close their shops from 3 p.m. to 4 p.m., and a public meeting at 7 p.m. in the Temperance Hall, were arranged in order that all might have the opportunity of joining in this preparation for the appointed Sunday.

On Sunday, Jan. 2nd, the arrangement followed at the beginning of 1915 was repeated, a separated service of Intercession being held after the close of Evensong in Church, at 7.30 p.m.

On each of the three days the celebration of the Holy Communion gave full opportunity for all Communicants to draw near with Faith in their earnest approach to God's presence.

At the close of the Service on Sunday evening, the Ringers gave a muffled peal, in agreement with a great many other belfries throughout the country, in memory of those who have fallen upon the field of honour.

THE TOTAL ABSTINENCE SOCIETY announces a meeting to be held in the Temperance Hall on January 11th, when the speakers will be Mrs. Gent, of Bingham, and Miss Freeman, of Gunthorpe.

HOSPITAL SUNDAY is appointed to be January 30th, when the claims of the Hospital, which has had such heavy burdens laid upon its staff during the war, will appeal to us very strongly.

We congratulate Arthur Evelyn Manchester on having passed in the first class at the College of Wireless Telegraphy, Manchester.

THE SCHOOL was examined in Religious Knowledge on December 7th, by the Diocesan Inspector, Rev. F. J. Ross, who says "The Religious Instruction is most carefully given in the Standards Divisions. The children answered keenly with good intelligence and thought. The instruction in the Catechism and Prayer Book was considerably above the average and it was pleasing to find both so well known."

The Rector's Prizes for Religious Knowledge were awarded to the following children :—Class I., John Kemp, Marjorie Wilkinson ; Class II, Ethel Bullimore, Fred Kirkland ; Class III., Mary Upton, Howard Fletcher, Infants' Class, Wilfred Cox, Ruby Green.

CHURCH RESTORATION FUND.—The offerings at the Christmas services amounted to £6 14s. 1d. All contributions towards the debt still remaining on the Restoration of the Church should be sent to the Rector, or placed in the Church box. During 1915, £5 1s. 9d. has been received through the Box in Church.

EXTRACTS FROM PARISH REGISTERS.

BAPTISM.

Dec. 26th. Muriel, daughter of Tom and Frances Jane Brown.

MARRIAGE.

Dec. 27th. Walter Widdowson and Greta Marie Raynor.

LIGHTING UP TIMES FOR JANUARY.

Jan. 5th, 5.4 (New Moon); 12th, 5.12; 20th, 5.24 (Full Moon); 28th, 5.38.

Time Table for East Bridgford of Trains to and from Nottingham, for January, 1916.

| Bingham. | | Lowdham. | | Victoria. | | Leave Nottingham. | | Arrive | |
|----------|-------------------------|------------------------|-------|-------------------|-----------------------|--------------------------|------------------|-------------------|------|
| Leave | | Leave | | Arrive Nottingham | | G.N.R. M.R. | | Bingham. Lowdham. | |
| | | | | G.N.R. M.R. | | Victoria. | | | |
| — | 6.58 | — | 7.1 | 5.25 | — | 5.48 | — | — | — |
| 7.30 | — | — | 7.54 | — | 6.0 | — | 6.19 | — | — |
| — | 7.46 | — | — | — | 6.28 | — | 6.47 | — | — |
| 8.20 | — | — | 8.45 | — | — | 7.38 | — | — | — |
| — | 8.25 | — | — | 8.45 | — | — | 7.39 | — | — |
| — | 8.59 | — | — | 9.20 | — | 8.34 | — | — | — |
| 9.4 | — | — | 9.28 | — | 8.32 | — | 8.51 | — | — |
| *9.43 | — | — | 10.6 | — | — | 9.48 | — | — | — |
| 9.51 | — | — | 10.12 | — | *10.25 | 10.47 | — | — | — |
| — | 9.56 | — | — | 10.22 | — | — | 11.46 | — | — |
| 11.59 | — | — | 12.23 | — | 11.50 | — | — | 12.13 | — |
| — | 1.35 <i>except Sat.</i> | — | 1.55 | — | — | 12.45 <i>except Sat.</i> | — | — | 1.3 |
| *1.40 | — | — | 2.4 | — | — | 1.5 | — | — | 1.24 |
| 2.1 | — | — | 2.25 | — | * 1.50 | — | 2.13 | — | — |
| — | 2.4 | — | — | 2.27 | — | 2.0 | — | 2.18 | — |
| — | 2.27 | — | — | 2.47 | — | 2.8 | — | 2.26 | — |
| — | 3.25 <i>Fridays</i> | — | — | 3.40 | — | 2.43 | — | 3.6 | — |
| *3.30 | — | — | 3.54 | — | 4.12 <i>Saturdays</i> | — | 4.33 | — | — |
| — | 4.22 | — | — | 4.40 | — | 4.40 | — | 4.59 | — |
| — | 4.48 | — | — | 5.10 | — | * 5.0 | — | 5.23 | — |
| 4.57 | — | — | 5.21 | — | — | 6.10 | — | 6.20 | — |
| 5.7 | <i>Saturdays</i> | — | 5.30 | — | 6.15 | — | 6.38 | — | — |
| — | 6.36 | — | — | 6.55 | — | 6.43 | — | 7.4 | — |
| 6.44 | — | — | 7.8 | — | — | 7.45 | — | 8.5 | — |
| — | 7.51 | — | — | — | 7.40 | — | 8.6 | — | — |
| *9.2 | — | — | 9.26 | — | 8.47 | — | 9.13 | — | — |
| 9.10 | — | — | 9.34 | — | — | 9.20 | — | 9.39 | — |
| — | 9.45 | <i>Saturday</i> | — | 10.5 | 9.55 | — | 10.19 | — | — |
| — | 10.5 | <i>except Saturday</i> | — | 10.25 | 11.0 | <i>Wed. and Sat.</i> | 11.24 | — | — |
| — | 10.15 | <i>Saturday</i> | — | 10.35 | — | 11.20 | <i>Saturday.</i> | 11.42 | — |

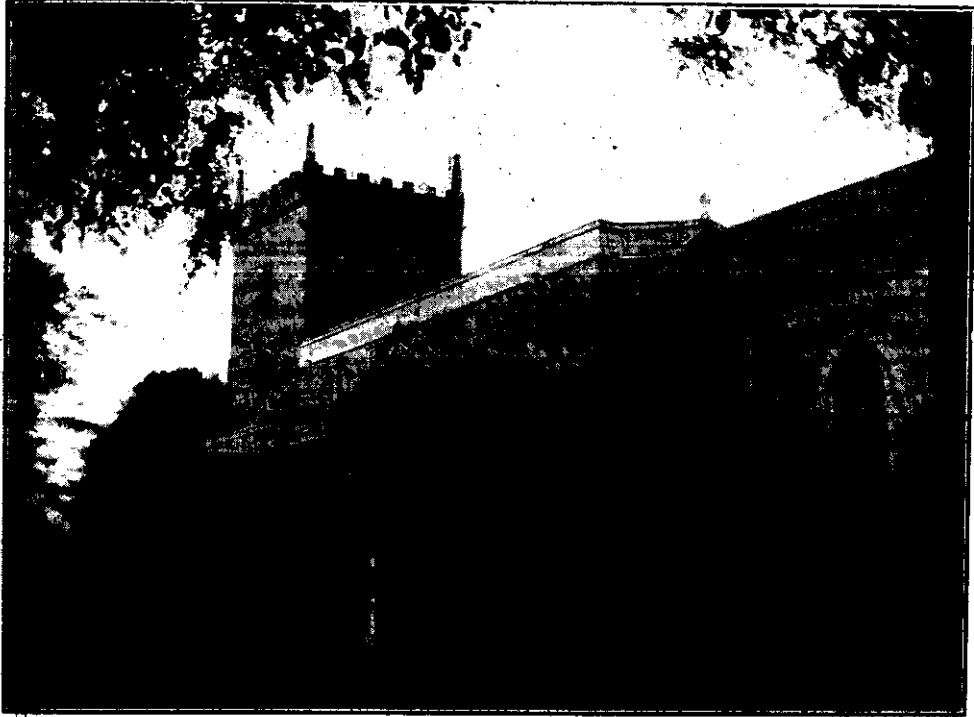
SUNDAYS.

| | | | | | | | |
|------|-------|------|------|-------|-------|-------|-------|
| — | 12.41 | — | 1.0 | — | 10.10 | — | 10.29 |
| 3.3 | — | 3.27 | — | 11.40 | — | 12.4 | — |
| 4.55 | — | 5.18 | — | 2.10 | — | 2.33 | — |
| — | 6.48 | — | 7.10 | 6.3 | — | 6.28 | — |
| 8.35 | — | 9.0 | — | — | 8.10 | — | 8.29 |
| — | — | — | — | 9.58 | — | 10.20 | — |

*Newark trains.

N.B.—All the G.N.R. train stop at London Road (High Level Station) as well as at the Victoria Station.

EAST BRIDGFORD MAGAZINE.



St. Peter's Church, East Bridgford.

*S*ervices.

HOLY COMMUNION:—

On all SUNDAYS (except last in Month) and HOLY DAYS at 8 a.m.
and after Morning Prayer on the First Sunday in the Month.

On the last Sunday in the Month : Matins at 10 ; Choral Eucharist 10.45.

MORNING AND EVENING PRAYER:—

Sundays at 10.45, and 6.30 p.m.

Weekdays, Wednesday and Friday at 10 and 6.30 p.m. daily.

HOLY BAPTISM:—

Second Sunday in month at 3, or at other Services on due notice.

CHURCHING OF WOMEN:—

Wednesday and Friday at 10, or before any Service on due notice.

SUNDAY SCHOOL AND CATECHISM:—

At 10 a.m. in the National School. Catechism in Church at 2.30.

The Rector expects to be away for the first two Sundays in February.

The Church Sunday School and Catechism were entertained at Tea on January 5th, when prizes were awarded, and a Lantern Exhibition provided. Special mention must be made of Alice Upton, who has not missed a single attendance during the year.

THE SCHOOL.—We regret to announce that Mrs. Goldston has resigned her post as Teacher of the Infants, after 31 years' work in East Bridgford School; and we hope she may be restored to health again.

Miss Jeannette Mona Sudbury has been appointed as Teacher, and will take up her duties on February 21st.

NOTICE OF CONFIRMATION.—The Bishop of Southwell will hold a Confirmation in this neighbourhood, but not at East Bridgford, shortly before Easter. The Rector will be glad to know of those who desire to be presented for Confirmation, that he may arrange for suitable preparation, not later than the end of February.

S.P.G.—The total amount sent up for the Foreign Missions of this Society from East Bridgford for 1915 is £17 10s. 10d.

The Temperance Hall Committee, at a meeting held Jan. 5th, decided that the charges for the use of the Hall must be raised. For an ordinary meeting the charge is now 4/- instead of 3/-; for Tea 6/- instead of 5/-; for an entertainment 10/-.

The following Temperance Meetings are announced; on February 8th, Speaker, Rev. F. W. Paul, Vicar of S. Emmanuel, Nottingham. March 7th, Speaker, Rev. T. Kedward, Nottingham.

MOTHERS' UNION.—Mrs Hoskyns addressed a meeting in the School on Thursday, Jan. 6th, on "Maternity and child welfare." In a very practical manner she pointed out the solemn responsibility of mothers in providing for the continuance of the strength of the nation. The laws of health should be looked at in the light of a religious duty. The Jews to this day so regard this matter under the obligations of the Old Testament, and are noted as a wonderfully healthy and vigorous race. It is very necessary that fathers should understand the importance of securing the needed relief and protection to the mother if he wishes his children to be strong and healthy; and the State is beginning to realize its duty in this respect.

Mrs Hoskyns exhibited specimens of baby-clothing made on new models to secure greater comfort and health, at less cost. In a few weeks' time Nurse Pike will have a complete outfit of baby's clothes on view, which may be used as patterns.

THE MAGAZINE.—If any subscribers desire to have the year's magazines bound in one volume, the Rector will be pleased to arrange with the book-binder to have it done.

Many in East Bridgford will be interested to hear that Major Turner Lee is now with the 54th Battalion Canadian Forces at Bramshott Camp, Hants.

CHURCH RESTORATION FUND.

| | £ | s. | d. |
|--|-------|----|----|
| Amount acknowledged November, 1915 | 2190 | 6 | 5 |
| R. Foster, Esq, Cornwall | 2 | 2 | 0 |
| Christmas Offerings | 6 | 14 | 1 |
| Mrs Allwood | 1 | 0 | 0 |
| Mrs Turner (the late) | 2 | 10 | 0 |
| Church Box, Dec—Jan. | 5 | 1 | |
| Total Jan. 24th, 1916 | £2202 | 17 | 7 |

Contributions towards the debt still remaining should be sent to the Rector or placed in the Church Box.

The sum collected on Jan. 2nd, the Sunday of War Intercession, for the Red Cross Society and St. John's Ambulance, was £5 18s. 0d.

EXTRACTS FROM PARISH REGISTERS.

MARRIAGES.

Jan. 23rd, at S. James', Nottingham. George Priestley and Florence Louisa Dent.
Jan. 25th, at Ropsley, Lincs. William Frank Mussell and Florence French.

BURIAL.

Jan. 3rd, at the Cemetery, Nottingham. Sarah Anna Maxfield, aged 81 years.

LIGHTING UP TIMES FOR FEBRUARY.

The new regulations for lighting-up vehicles, half-an-hour after sunset, and for the use of rear lights, come into force in this district on February 10th.

Lighting up times:—Feb. 5rd, 5.49 (New Moon); 10th, 5.31; 19th, 5.48 (Full Moon); 26th, 6.1.

THE WAR.—The following list contains the names of those who have voluntarily offered their services in Navy or Army, from East Bridgford, or whose parents or wives are living amongst us.

THE ROLL OF HONOUR OF THOSE WHO HAVE FALLEN,

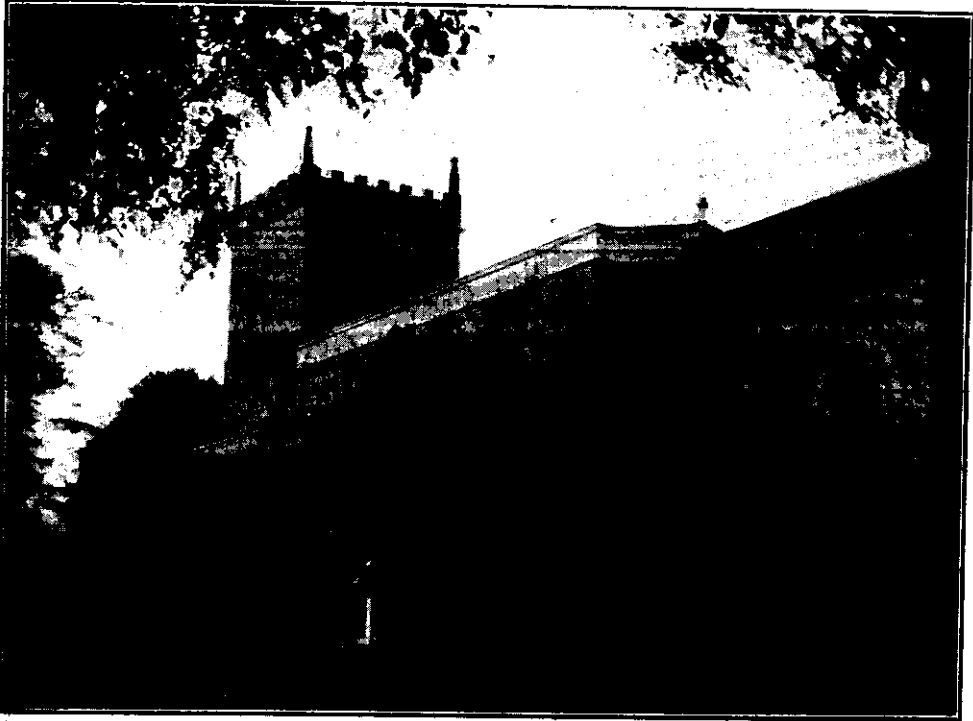
Ernest Goddard, Pte. 1st Lincs. Feb. 5th, 1915.
 Herbert Richards, Sapper, Royal Engineers. May 25th, 1915.
 Urban Blagg, Pte. 2nd Sherwood Foresters. Missing Jan. 7th, 1915.
 Frank Thraves (Gunthorpe), Pte. 1st Sherwood Foresters. July 30th, 1915.
 John Rudkin (Newton), Pte. 8th Sherwood Foresters. July 30th, 1915.
 William Kirkham (Newton), Pte. 8th Sherwood Foresters. August 14th, 1915.
 William Henry Manchester Guy, Pte. 12th Sherwood Foresters. Sept. 26th, 1915.
 John Henry Upton, Pte. 2nd Grenadier Guards. Nov. 22nd, 1915.

| | |
|----------------------------|----------------------|
| John Cloxton | Henry Talkes |
| Horace Cloxton | Albert Jallands |
| John William Carrington | Arthur Pepper |
| Rupert Blagg | Arthur Pailing |
| Bentley Blagg, R.N. | Ernest Charles Smith |
| Joseph Allwood | Joseph Cox |
| Charles Wilkinson | Harold Watts |
| Robert Moss | Eric Watts |
| Sidney Bateman | Francis Wilkinson |
| Charles Walter Bateman | Robert Wilkinson |
| George Bateman | Horace Wilkinson |
| John Marshall | George Cartwright |
| Robert Marshall | John Crossland |
| Fred Marshall | Arthur Crossland |
| Henry Percy Goldston | William Waterfield |
| John Raynor | Harry Ellis |
| Samuel Hatfield Smith | Arthur Thraves |
| John Mills | John Henry Shardlow |
| Robert Kingsley Weatherell | George Crossland |
| Cuthbert Weatherell | Whittle Cloxton |
| Herbert Milward | Harry Cloxton |
| Gervase Milward | Tom Thraves |
| Richard Milward | William Mussell |
| Roderick G. Milward | William Cooper |
| Leonard Cliff Hodges | William Mann |
| Harold Augustus Hodges | Robert Gower |
| Reginald John Hodges | John Cecil Pickford |
| Cecil B. Robinson | Rowland Upton |
| Charles Moor | George Widdison |
| Arthur Richardson | George Pepper |
| Claude Smith | Fred Hunt |
| Bernard Smith | Charles Atkinson |
| Ephraim Breedon | Harry Stanley |

To these we may add the following names of others from East Bridgford families, or who have been boys at School here :—

| | |
|-----------------------|-------------------------|
| John Chapman | Donald H. Richardson |
| Ernest Edward Chapman | William Bernard Peatman |
| Richard Thraves | George Worthington |
| Samuel Blagg | Henry Holmes |
| Herbert Blagg | Joseph Osborne |
| Joseph Rogers Brewitt | Leonard Cheetham |
| John William Brewitt | Tom Cheetham |
| Percy Forrest | Herbert Gamble |
| Richard Forrest | John Frederick Baldock |

EAST BRIDGFORD MAGAZINE.



St. Peter's Church, East Bridgford.

Services.

HOLY COMMUNION:—

On all SUNDAYS (except last in Month) and HOLY DAYS at 8 a.m. and after Morning Prayer on the First Sunday in the Month.

On the last Sunday in the Month : Matins at 10 ; Choral Eucharist 10.45.

MORNING AND EVENING PRAYER:—

Sundays at 10.45, and 6.30 p.m.

Weekdays, Wednesday and Friday at 10 and 6.30 p.m. daily.

HOLY BAPTISM:—

Second Sunday in month at 3, or at other Services on due notice.

CHURCHING OF WOMEN:—

Wednesday and Friday at 10, or before any Service on due notice.

SUNDAY SCHOOL AND CATECHISM:—

At 10 a.m. in the National School. Catechism in Church at 2.30.

LENT, 1915.—We are now approaching the season of Lent. March 8th is Ash Wednesday, the first day of Lent. There will be a celebration of Holy Communion at 8, Morning Prayer at 11, and a short service at 3 o'clock.

How are we to make such use of this as may help us to turn more than ever to God, in the serious experiences through which we are passing? There are probably good reasons for not holding special evening services this year, at any rate in the earlier weeks of Lent; but this should make us all the more desirous of attending those services which are provided on Sundays, and so bringing ourselves week by week under the influence of God's Holy Spirit, with the definite intention of serving Him better, and worshipping more earnestly.

Our Bishop in his last Charge to the Diocese spoke very seriously on the need of better observance of Sunday morning. Referring to the difficulty of finding the best arrangement of services he says, "No rigid rule is suitable for all parishes. We are bound to form our plans around the service of the Holy Communion without ignoring or despising Morning Prayer—more and more there is an agreement upon this. The mind of our Church people needs to be stirred up to put aside prejudice and to face this question, for we cannot be content with the low proportion of communicants to the ordinary Church-goers. In what direction have we failed? The causes are many and reach far back in history."

The Bishop then referred to the various forces at work to hinder rather than to attract; the long neglect of true Sacramental teaching; the endeavour to win souls by fear rather than by love; and that false view has such a grip on English Christians, that the Sacraments are to be looked upon as a reward for morality, rather than as a means of Grace whereby weak souls become strong or sinful souls washed and nourished. He would encourage parents to allow their children to remain with them when communicating. Every day and Sunday school teacher has learnt the value of teaching through the eye, and it was a strange way of training children to plunge them into the midst of the Communion Service after Confirmation, without ever having allowed them to be present before. The Bishop continues, "I venture to make another suggestion. Can we not even in small country parishes brighten the Communion service and make it really Eucharistic? However solemn and however sweet to many is the silence and quietude of that hour, yet there are many times when a more joyous note should be struck, most attractive to the simple and the young. Bright hymns and a plain-sung service warm and cheer, providing just that liberty and movement that we need. Experience has taught me how stirring such a service is in large town parishes. In country villages a Parish Communion must be at a later hour."

Some will remember that our Bishop used very similar words at his visitation of this parish in 1914. Since the re-opening of the Church we have had a monthly Choral celebration of Holy Communion on the last Sunday in the month at 10.45, on the lines he suggests. It has been used and appreciated by many, but no doubt there are others who have still to learn the full meaning of the service, and who are still afraid of attending it lest they should be doing something wrong.

Let it be remembered that there are two main purposes in view in Our Lord's own service for His people. First, it is the great act of *worship* in which the Church unites as a Body, presenting before God the appointed Memorial of Christ's death, together with thanksgiving and praise which we can only offer acceptably through Christ. And secondly, it is the way in which Christ Himself comes to each individual soul, to strengthen and refresh it with His Body and Blood.

Normally, these two purposes are united in one Service, and we do not desire to separate eucharistic worship and communion. But while each person may have his own rule as to the frequency of receiving the Sacrament and some may prefer to do so at some quiet early hour, there is no reason why all the members of Christ's Church should not join in its corporate act of praise and thanksgiving and intercession, by being present regularly at the parish communion. They would at least be preparing for the next occasion of their own communion, instead of allowing a long interval to elapse of forgetfulness of the great central principle of Christian worship. Our Prayer Book clearly recognizes the presence of others than "those that are minded to receive the Holy Communion" at the service. To some it may suggest a fresh effort to attend Church at least on one Sunday morning in the month.

I hope those who have not yet made use of the opportunity thus provided will carefully read what I have here written, and perhaps during this coming Lent, we may all be helped thereby to make some forward step in our efforts to come nearer to God. A.D.H.

HOSPITAL SUNDAY.—The amount collected on January 30th in Church was £7 18s. 4d., which together with sums received since, made up £9. To the General Hospital £7 was sent, and £1 each to the Women's Hospital and the Eye Infirmary.

CHURCH RESTORATION FUND.—The debt on the Church is now reduced to £120, but it must be remembered that interest has to be paid to the Bank for this overdraft. It has been decided to print and circulate among subscribers a statement of the accounts of the Church Restoration, and it is therefore hoped that some further subscriptions will be sent in before March 25th. Contributions may be sent to the Rector, or placed in the Church box.

THE WAR.—The news has at length reached us that Urban Blagg, Private 2nd Sherwood Foresters, reported missing more than a year ago, was killed in action on October 20th, 1914. A muffled peal was rung after evensong on February 20th.

Second-Lieutenant Richard Milward, 4th Sherwood Foresters, attached to the 10th Batt. has been reported missing by the War Office. It is feared that he was killed in the severe action on February 16th, in which the 10th Battalion suffered severely.

Our deep sympathy goes out to the bereaved families.

The Zeppelin raid over the Midlands on Jan. 31st, made itself disagreeably known to us, but our county fortunately escaped the dastardly outrages from which other parts of the Midlands suffered.

The Parish Council has put out the following notice, which should be attended to by all inhabitants :—

- I.—All householders are earnestly requested to have no lights outside, and to shade all lights in their houses for the present, owing to the possibility of visits from Zeppelins.
- II.—In the event of Zeppelins coming near again the Council will endeavour to give warning by ringing the SCHOOL BELL. Every householder must then at once put out all lights, and no flash lights must be used in the streets.
- III.—The above Regulations for Private Houses apply also to all Public Buildings.

JOHN WILKINSON, Chairman.
F. SHARP, Clerk.

The evening services in Church and the Chapels are for the present held at an earlier hour.

BELGIAN REFUGEE FUND.—A statement of accounts from Oct. 16th, 1915 to January 31st, 1916, has been sent to subscribers to this fund. Further subscriptions are urgently needed to carry on the work of maintaining our unfortunate visitors who have been driven out of their own home and country. M. Fernand Pelgrims is now engaged in work connected with munition supply and M. René Pelgrims has joined the Belgian Army.

Police Constable E. N. Sears has been moved to Costock. Apart from his official duties, he has in various ways taken his share in the interests and life of the village, especially as Secretary of the Cricket Club. Some of his friends have raised a small sum for the purpose of presenting him with a testimonial of their esteem.

P.C. Cleal has come here from Costock, in his place.

A QUIET DAY has been arranged for Monday, March 13th, at S. Peter's Church, Nottingham, for members of the Mothers' Union, the Girls' Friendly Society, and all Church workers. Addresses will be given by Rev. Canon Keymer at services at 10.30, 2.30 and 3.30.

TEMPERANCE HALL.—The Choral Society will give a Concert on Tuesday, March 7th, in aid of the Y.M.C.A. and Red Cross Society.

EXTRACTS FROM PARISH REGISTERS.

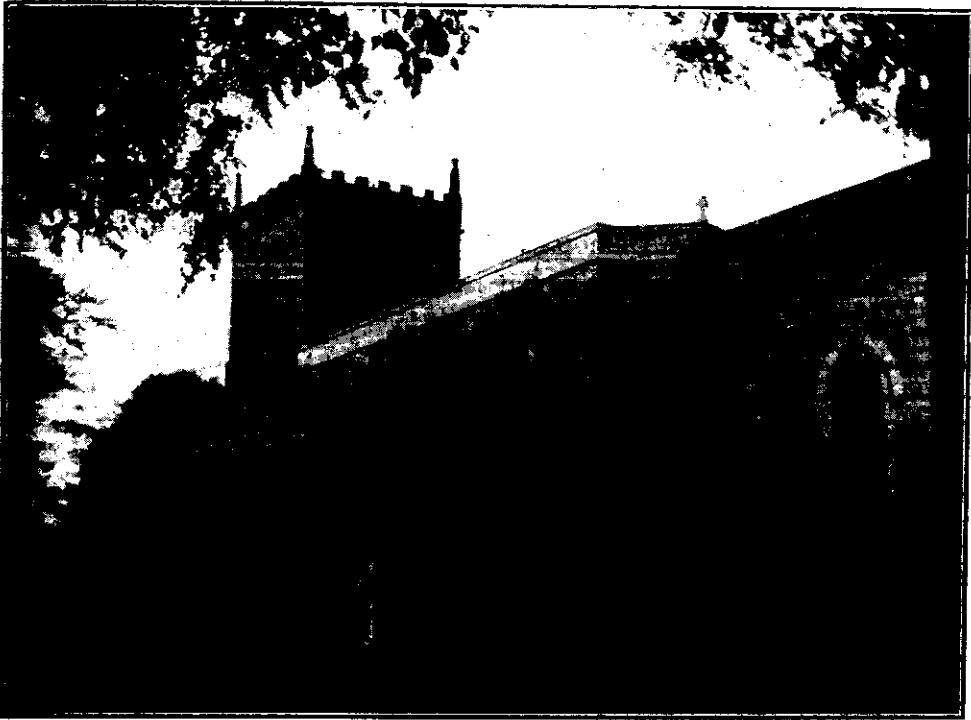
BURIAL.

Feb. 14th. Phyllis Allister, aged 4 years.

LIGHTING UP TIMES FOR MARCH.

Lighting up times :—March 4th, 6.11 (New Moon); 11th, 6.24; 19th, 6.38 (Full Moon); 26th, 6.50.

EAST BRIDGFORD MAGAZINE.



St. Peter's Church, East Bridgford.

Services.

HOLY COMMUNION:—

On all SUNDAYS (except last in Month) and HOLY DAYS at 8 a.m.
and after Morning Prayer on the First Sunday in the Month.

On the last Sunday in the Month : Matins at 10 ; Choral Eucharist 10.45.

MORNING AND EVENING PRAYER:—

Sundays at 10.45, and 6.30 p.m.

Weekdays, Wednesday and Friday at 10 and 6.30 p.m. daily.

HOLY BAPTISM:—

Second Sunday in month at 3, or at other Services on due notice.

CHURCHING OF WOMEN:—

Wednesday and Friday at 10, or before any Service on due notice.

SUNDAY SCHOOL AND CATECHISM:—

At 10 a.m. in the National School. Catechism in Church at 2.30.

With the beginning of April, the lengthening daylight will enable us to have the Sunday evening service at a later hour. On April 2nd and the following Sundays the service will accordingly be held at **5.30 p.m.**, and on **Easter Day**, April 23rd, we shall be able to return to the usual hour of 6.30 p.m.

The order for drawing blinds and obscuring lights should still be carefully observed, and the time at which this should be done is one hour after sunset; while vehicles and cycles must light lamps half-an-hour after sunset. The sun sets on April 2nd at 6.31, and on April 24th at 7.7 p.m.

LENT SERVICES.—On Wednesday evenings, April 5th and 12th, there will be a short service, with sermon, in church at 6 p.m.

THE CONFIRMATION.—The Bishop of Southwell will hold a Confirmation in Bingham Church on Wednesday, April 19th, at 3 p.m.

HOLY WEEK AND EASTER.—Holy Communion on Thursday before Easter at 8 a.m. Evensong each week day in Holy week at 6.

On **Good Friday**, April 21st, the Services will be, Litany at 8, Morning service 11, a service of prayer and meditation, 2 to 3 p.m., Evening service at 6.

Easter Day, April 23rd, Holy Communion at 7 and 8 (choral), and also at Mid-day after Mattins at 10.45. The Evening service will be at 6.30 p.m. On the First Sunday after Easter, April 30th, Holy Communion at 8 a.m.

THE EASTER VESTRY MEETING will be held in the School on Easter Tuesday, April 25th, at 6.30 p.m. for the purpose of the appointment of Churchwardens and Sidesmen, and of receiving the Churchwardens' accounts, and such other business as may arise.

THE Annual Meeting of the Committee of the Jalland Library was held on Monday, February 28th.

Mr. T. E. Jesson, Librarian, is in attendance at the School on Mondays from 6 to 7 when books may be taken out or returned. The subscription is 1/- a year, or may be paid quarterly.

THE TOTAL ABSTINENCE SOCIETY close their winter season with a Soirée in the Temperance Hall on Tuesday, March 28th.

The welcome news has been received that Second-Lieut. Richard Milward, reported missing on February 17th, and believed to be killed, is now alive and safe. He was buried in a trench for some hours, and eventually taken out and made prisoner by the Germans, who, we are glad to learn, behaved very kindly to him.

The name of Walter Pacey, S. Notts Hussars, is to be added to those already voluntarily serving.

CHURCH RESTORATION FUND.

| | | | £ | s. | d. |
|---|----|----|----|------|------------|
| Amount acknowledged February, 1916 | .. | .. | .. | 2202 | 17 7 |
| Sales | .. | .. | .. | .. | 10 6 |
| Mr. H. Ellis | .. | .. | .. | .. | 10 0 |
| Miss Fox | .. | .. | .. | .. | 5 0 0 |
| School Children, for the Bells, per Mrs. Goldston | .. | .. | .. | .. | 5 9 |
| Mr. C. Millington | .. | .. | .. | .. | 1 0 0 |
| Total, March 25th, 1916 | | | .. | .. | £2210 3 10 |

The debt on the church is now reduced below £120, but it must be remembered that interest has to be paid to the Bank for this overdraft. The offerings at the services on Easter Day will be given to this fund, and the whole accounts will then be printed and circulated among subscribers. All contributions which may be sent to the Rector before Easter will be included in the statement.

A meeting of the Committee of the East Bridgford Horticultural Society was held on Friday, March 24th. The accounts for 1915 were presented, which showed that, with the help of a small additional subscription, the receipts exactly balanced the expenses, and that there was nothing in hand, and no debts.

It was unanimously agreed that under the present serious conditions of war-time, no Flower Show should be held this year.

EXTRACTS FROM PARISH REGISTERS.

BAPTISM.

March 5th. Ronald, son of Owen and Sarah Blagg.

LIGHTING UP TIMES FOR APRIL.

April 2nd, 7.1 (New Moon); 10th, 7.14; 18th, 7.28 (Full Moon); 24th, 7.37

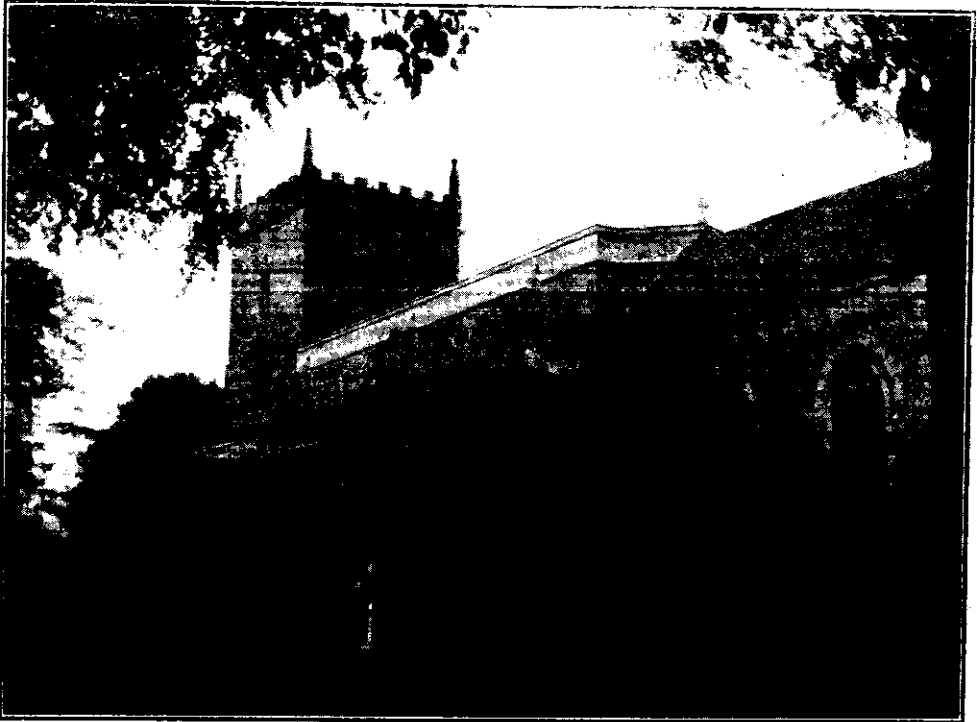
Time Table for East Bridgford of Trains to and from Nottingham, for April, 1916.

| Bingham. | | Lowdham. | | Victoria. Arrive Nottingham | | Leave Nottingham. | | Arrive | | | |
|-----------------|-----------------------------|-------------------------|-------|--------------------------------|-----------------------|--------------------------|------------------|----------|----------|-----|--|
| | | | | G.N.R. | M.R. | G.N.R. | M.R. | Bingham. | Lowdham. | | |
| Leave | Leave | | | Victoria. | | | | | | | |
| — | 6.58 | — | 7.1 | — | 5.25 | — | — | 5.48 | — | — | |
| 7.30 | — | 7.54 | — | — | — | 6.0 | — | — | 6.19 | — | |
| — | 7.46 | — | 8.5 | — | — | 6.28 | — | — | 6.47 | — | |
| 8.20 | — | 8.45 | — | — | 7.15 | — | — | 7.38 | — | — | |
| — | 8.25 | — | 8.45 | — | — | 7.20 | — | — | 7.39 | — | |
| — | 8.59 | — | 9.20 | — | *8.10 | — | — | 8.34 | — | — | |
| 9.4 | — | 9.28 | — | — | — | 8.32 | — | — | 8.51 | — | |
| *9.43 | — | 10.6 | — | — | 9.25 | — | — | 9.48 | — | — | |
| 9.51 | — | 10.12 | — | — | *10.25 | — | — | 10.47 | — | — | |
| — | 9.56 | — | 10.22 | — | — | 11.25 | — | — | 11.46 | — | |
| 11.59 | — | 12.23 | — | — | 11.50 | — | — | 12.13 | — | — | |
| — | | 1.35 <i>except Sat.</i> | | — | | 12.45 <i>except Sat.</i> | | — | | 1.3 | |
| *1.40 | — | 2.4 | — | — | — | 1.5 | — | — | 1.24 | — | |
| 2.1 | — | 2.25 | — | — | * 1.50 | — | — | 2.13 | — | — | |
| — | 2.4 | — | 2.27 | — | — | 2.0 | — | — | 2.18 | — | |
| — | 2.27 | — | 2.47 | — | 2.8 | — | — | 2.26 | — | — | |
| — | 3.25 <i>Fridays</i> | — | 3.40 | — | 2.43 | — | — | 3.6 | — | — | |
| *3.30 | — | 3.54 | — | — | 4.12 <i>Saturdays</i> | — | — | 4.33 | — | — | |
| — | 4.22 | — | 4.40 | — | — | 4.40 | — | — | 4.59 | — | |
| — | 4.48 | — | 5.10 | — | * 5.0 | — | — | 5.23 | — | — | |
| 4.57 | — | 5.21 | — | — | — | 6.10 | — | — | 6.29 | — | |
| 5.7 | <i>Saturdays</i> | 5.30 | — | — | 6.15 | — | — | 6.38 | — | — | |
| — | 6.36 | — | 6.55 | — | — | 6.43 | — | — | 7.4 | — | |
| 6.44 | — | 7.8 | — | — | — | 7.45 | — | — | 8.5 | — | |
| — | 7.51 | — | — | — | 7.40 | — | — | 8.6 | — | — | |
| *9.2 | — | 9.26 | — | — | 8.47 | — | — | 9.13 | — | — | |
| 9.10 | — | 9.34 | — | — | — | 9.20 | — | — | 9.39 | — | |
| — | 9.45 | <i>Saturday</i> | 10.5 | — | 9.55 | — | — | 10.19 | — | — | |
| — | 10.5 <i>except Saturday</i> | — | 10.25 | — | 11.0 | <i>Wed. and Sat.</i> | — | 11.24 | — | — | |
| — | 10.15 <i>Saturday</i> | — | 10.35 | — | — | 11.20 | <i>Saturday.</i> | — | 11.42 | — | |
| SUNDAYS. | | | | | | | | | | | |
| — | 12.41 | — | 1.0 | — | — | 10.10 | — | — | 10.29 | — | |
| 3.3 | — | 3.27 | — | — | 11.40 | — | — | 12.4 | — | — | |
| 4.55 | — | 5.18 | — | — | 2.10 | — | — | 2.33 | — | — | |
| — | 6.48 | — | 7.10 | — | 6.3 | — | — | 6.28 | — | — | |
| 8.35 | — | 9.0 | — | — | — | 8.10 | — | — | 8.29 | — | |
| — | — | — | — | — | 9.58 | — | — | 10.20 | — | — | |

*Newark trains.

N.B.—All the G.N.R. train stop at London Road (High Level Station) as well as at the Victoria Station.

EAST BRIDGFORD MAGAZINE.



St. Peter's Church, East Bridgford.

Services.

HOLY COMMUNION:—

On all SUNDAYS (except last in Month) and HOLY DAYS at 8 a.m.
and after Morning Prayer on the First Sunday in the Month.

On the last Sunday in the Month : Matins at 10 ; Choral Eucharist 10.45.

MORNING AND EVENING PRAYER:—

Sundays at 10.45, and 6.30 p.m.

Weekdays, Wednesday and Friday at 10 and 6.30 p.m. daily.

HOLY BAPTISM:—

Second Sunday in month at 3, or at other Services on due notice.

CHURCHING OF WOMEN:—

Wednesday and Friday at 10, or before any Service on due notice.

SUNDAY SCHOOL AND CATECHISM:—

At 10 a.m. in the National School. Catechism in Church at 2.30.

A JUMBLE SALE on April 15th, realised £21 for the East Bridgford District Nurse Fund, and thus defrayed the deficit which was due to the Hon. Treas. on a total expenditure of £75 for 1915.

We are glad to record the following notice from the London Gazette of April 3rd :—

Regular Forces, Infantry, March 5th, 1916, Manchester Regiment, Private H. P. Goldston (from a Service Battalion, Notts and Derby Regiment) to be Temp. 2nd Lieutenant.

THE NATIONAL MISSION.

It is doubtful whether the Church of England has ever been called to a task so great as that to which we are now summoned by the Archbishops. There have been great movements within the Church; but this is a movement of the whole Church, a call to discharge that *mission to the nation*, with which it is entrusted. The times require such an effort; we are conscious, as most of us were not two years ago, of our membership in the nation, and of the responsibility of our nation in the world. Our sons and brothers at the Front are serving their nation and helping it to meet its responsibility, at the risk of their lives; many of them in doing so are finding a new realisation of God. We at home must seek from God the power to rise to new heights, so that we may be worthy of their sacrifice and provide for them on their return a home that will sustain their spirit of devotion to duty and service to God.

But to this end we must first take stock of ourselves. Very much has come to light which shows the need for amendment and renewal of life. We have not brought home the message with which we are entrusted as it needs to be brought home. We must seek in prayer and meditation and conference to find the cause of our ineffectiveness where it exists, so that we may repent of it and remove it where it lies in ourselves as individuals or as members of the Church in our neighbourhood.

If we will do that, there is before us a great hope—the hope of an England leavened and guided in regard to its whole life, domestic, social, industrial, political, international, by a Church whose members have sought the will of God in humility and prayer, and are ready to witness together to the Majesty of God and to His redeeming Love in Christ. It is a time for prayer, for teaching, for witness; may God give us all faith that we may pray, knowledge that we may teach, and courage that we may witness—all these according to His will and to the praise of His glory.

EXTRACTS FROM PARISH REGISTERS.

BAPTISM.

April 9th. Lilian, daughter of George Turner and Jane Ellen Jackson.

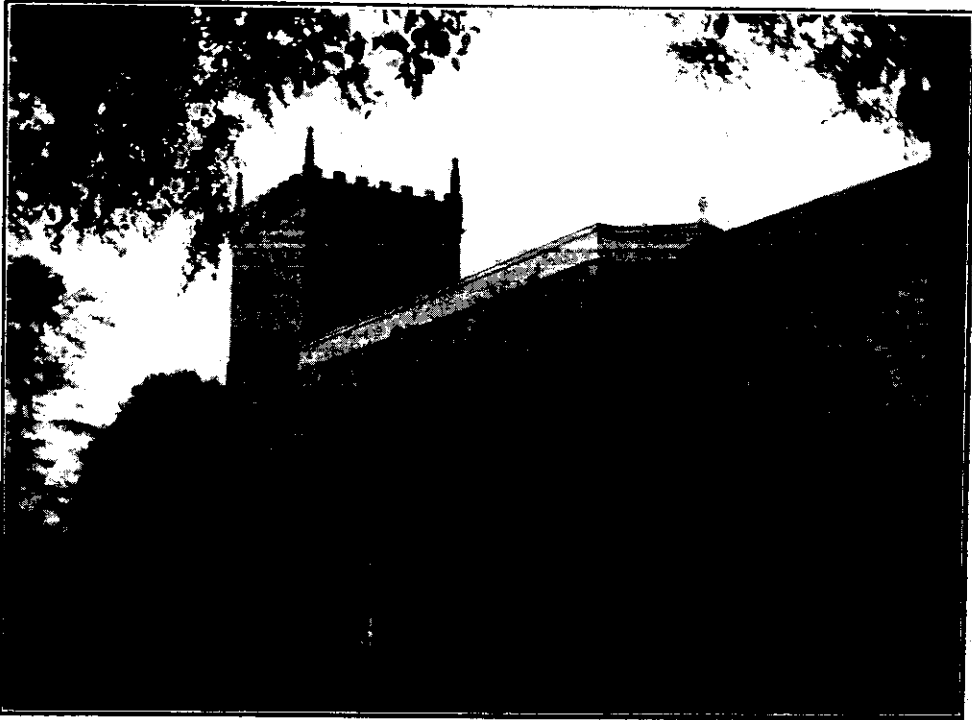
MARRIAGE.

April 24th. John Henry Pacey and Mary Lizzie Atkinson.

LIGHTING UP TIMES FOR MAY.

May 2nd, 7.51 (New Moon); 10th, 8.3; 17th, 8.14 (Full Moon); 24th, 8.24; 31st, 8.33 (New Moon). Windows to be obscured half an hour after these times.

EAST BRIDGFORD MAGAZINE.



St. Peter's Church, East Bridgford.

Services.

HOLY COMMUNION:—

On all SUNDAYS (except last in Month) and HOLY DAYS at 8 a.m.
and after Morning Prayer on the First Sunday in the Month.

On the last Sunday in the Month : Matins at 10 ; Choral Eucharist 10.45.

MORNING AND EVENING PRAYER:—

Sundays at 10.45, and 6.30 p.m.

Weekdays, Wednesday and Friday at 10 and 6.30 p.m. daily.

HOLY BAPTISM:—

Second Sunday in month at 3, or at other Services on due notice.

CHURCHING OF WOMEN:—

Wednesday and Friday at 10, or before any Service on due notice.

SUNDAY SCHOOL AND CATECHISM:—

At 10 a.m. in the National School. Catechism in Church at 2.30.

THE SUMMERTIME ACT.—This change of time, commonly spoken of as "Day-light Saving," came legally into operation at 2 a.m. on Sunday, May 22nd, though of course most clocks and watches were altered before that moment, the hands being moved forward one hour. It was perhaps more puzzling to some to look forward to it, than it is found in actual practice to be, for advancing the clock means throwing our actions back an hour earlier. In an agricultural district such as ours, where the daylight hours are generally well utilized, there is some difficulty at first in adjusting the time for work already beginning in the early hours; but there can be no doubt that the advantages of the change during the summer months will be generally appreciated, as affording a longer time of daylight after working hours.

The clocks will be put back one hour at 2 a.m. on Sunday, October 1st, when we shall revert to the usual time.

We have grown quite accustomed to the adoption of Greenwich mean time owing to the extension of railways all over England, though this was resented at first. It is only four minutes earlier than East Bridgford local time by the sun, but in Cornwall there is a difference of 20 minutes.

A far more serious change took place when the calendar was corrected in 1752, seventy years after it was adopted on the Continent, when the day after Sept. 2nd had to be reckoned as Sept. 14th, and people thought they had been robbed of eleven days.

Railways, post-office, shop-closing, school, church, are all, of course, regulated by Summer Time; but lighting-up times for vehicles and cycles are still regulated by the time of sunset, though they have to be stated by the time shown by the clock.

Lighting up times for June are here calculated exactly, for East Bridgford. Four minutes has always to be added to Greenwich time of sunset because we are one degree of Longitude west, and during June eight minutes more must be added because we are $1\frac{1}{2}$ degrees of Latitude North of Greenwich.

LIGHTING-UP TIMES, half-an-hour after sunset, will therefore be:—

June 8th, 9.53; 15th, 9.58 (Full Moon); 22nd, 10.2; 30th, 10.2 (New Moon).

Lighted Windows must be obscured half an hour later than these times.

On May 21st a Pastoral letter from the Bishop of Southwell was read in Church, reminding us of Our Lord's great appeal on the eve of His Ascension, "Ye shall be witnesses unto Me," and of His promise, "Ye shall receive Power." We are asked to contribute our share, £10, of the necessary funds needed to carry on the Religious work of the Diocese, maintenance of the Ministry, Church Building, educational and charitable, for which the appeal is made annually on Rogation Sunday in all the 500 parishes of the Diocese.

ASCENSION DAY, June 1st.—The Holy Communion will be celebrated at 8 a.m. Services at 11 a.m. and 7.30 p.m.

WHIT-SUNDAY, June 11th.—There will be celebrations of the Holy Communion at 7, 8 and Mid-day. The offerings on this day will be for the Church Restoration Fund. Mr. J. Turner and the Rector have undertaken to make themselves responsible for the future payment of the interest on the overdraft at the Bank, so that we shall be able to know exactly the amount of the debt; and we hope that all those who worship in the restored building will really make an effort towards the final payment of the £100 still due.

S.P.G.—A garden party will be given at Whatton Grange, on Thursday, June 8th, to those in this Deanery interested in Missionary Work. Service in Whatton Church, 3.30 p.m.; Meeting, 4 p.m., addressed by Rev. O. Haydock Wilson, from British Guiana. Tea 6d.

THE NATIONAL MISSION OF REPENTANCE AND HOPE. On Trinity Sunday, June 18th, the Rev. Canon H. A. Gem will preach in the evening, on the subject of preparation for the Mission.

On Wednesday, June 28th, a meeting will be arranged in the garden of Bingham Rectory, to which all communicants in the parishes of the Bingham Rural Deanery are invited. There will be Tea provided at 6 o'clock (6d. a head), a short service of intercessory prayer in Bingham Church at 7 p.m., and a meeting in the Rectory Garden, when the Archdeacon of Nottingham, the Ven. W. J. Conybeare, Rector of Southwell, and other speakers, will address the communicants on the subject of the National Mission.

We hope a good party from East Bridgford will attend, not only that they themselves may learn more about the purpose of the Mission, but also as desirous of doing their part and helping one another in bearing witness to the claim of God's kingdom in this great crisis of our national life.

FEAST SUNDAY, June 25th.—The Holy Communion will be celebrated at 7 a.m. and also at 10.45 (Choral). Matins at 10.

No Flower Show is to be held in Feast Week this year, but let us not forget that the first and foremost purpose of a parish feast-time is thankfulness to Almighty God for his mercies and blessings. It is well to remember in this time of anxiety and sorrow, that we have much to thank God for—that He has spared our land from much of the horrors of War, that a spirit of self-sacrifice and duty has been aroused in our country. Let us be thankful too for the gallant conduct of our own local Regiment at Hooge last August, at the Hohenzollern redoubt, and in the rebellion in Ireland, where in a critical moment they saved the situation. Let this Feast Sunday be a time of remembrance of absent friends, and of prayer for their safety and support, and for the restoration of peace to our land.

A contribution of £1 by the members of the Catechism in Lent and Easter-tide has been sent to the Church of England Waifs and Strays Society.

EMPIRE DAY.—May 24th was officially marked this year by the hoisting of the flag on public buildings. The children saluted the flag as usual at the School. It is the birthday of the great Queen Victoria, in whose reign the conception of Empire was developed and recognized. The day reminds us of the value of the simple loyalty of plain people, and of our duty to God and country.

Miss Evelyn Bateman, who has been employed in the Infants' Class in the School for the last seven years, has been appointed Assistant Teacher in the School at Misson, Notts.

EXTRACTS FROM PARISH REGISTERS.

MARRIAGE.

May 13th. Douglas Hallam and Mabel Annie Shephard.

BURIAL.

May 1st. Maria Blagg, aged 75 years.

Time Table for East Bridgford of Trains to and from Nottingham, for June, 1916.

| Bingham. | Lowdham. | Victoria. | | Leave Nottingham. | | Arrive | |
|----------------------|-----------------------------|-----------------------------|-------|---------------------------|--------------------------|----------|----------|
| | | Arrive Nottingham G.N.R. | M.R. | G.N.R. | M.R. | Bingham. | Lowdham. |
| Leave | Leave | | | Victoria. | | | |
| — | 6.58 | — | 7.1 | 5.25 | — | 5.48 | — |
| 7.30 | — | 7.54 | — | — | 6.0 | — | 6.19 |
| 8.20 | 7.46 | — | 8.5 | — | 6.28 | — | 6.47 |
| — | — | 8.45 | — | 7.15 | — | 7.38 | — |
| — | 8.25 | — | 8.45 | — | 7.20 | — | 7.39 |
| — | 8.59 | — | 9.20 | *8.10 | — | 8.34 | — |
| 9.4 | — | 9.28 | — | — | 8.32 | — | 8.51 |
| *9.43 | — | 10.6 | — | 9.25 | — | 9.48 | — |
| 9.51 | — | 10.12 | — | *10.25 | — | 10.47 | — |
| — | 9.56 | — | 10.22 | — | 11.25 | — | 11.46 |
| 11.59 | — | 12.23 | — | 11.50 | — | 12.13 | — |
| — | 1.35 <i>except Sat.</i> | — | 1.55 | — | 12.45 <i>except Sat.</i> | — | 1.3 |
| *1.40 | — | 2.4 | — | — | 1.5 | — | 1.24 |
| 2.1 | — | 2.25 | — | * 1.50 | — | 2.13 | — |
| — | 2.4 | — | 2.27 | — | 2.0 | — | 2.18 |
| — | 2.27 | — | 2.47 | 2.8 | — | 2.26 | — |
| — | 3.25 <i>Fridays</i> | — | 3.40 | 2.43 | — | 3.6 | — |
| *3.30 | — | 5.54 | — | 4.12 <i>Saturdays</i> | — | 4.33 | — |
| — | 4.22 | — | 4.40 | — | 4.40 | — | 4.59 |
| — | 4.48 | — | 5.10 | * 5.0 | — | 5.23 | — |
| 4.57 | — | 5.21 | — | — | 6.10 | — | 6.29 |
| 5.7 <i>Saturdays</i> | — | 5.30 | — | 6.15 | — | 6.38 | — |
| — | 6.36 | — | 6.55 | — | 6.43 | — | 7.4 |
| 6.44 | — | 7.8 | — | — | 7.45 | — | 8.5 |
| — | 7.51 | — | — | 7.40 | — | 8.6 | — |
| *9.2 | — | 9.26 | — | 8.47 | — | 9.13 | — |
| 9.10 | — | 9.34 | — | — | 9.20 | — | 9.39 |
| — | 9.45 <i>Saturday</i> | 10.5 | — | 9.55 | — | 10.19 | — |
| — | 10.5 <i>except Saturday</i> | 10.25 | — | 11.0 <i>Wed. and Sat.</i> | — | 11.24 | — |
| — | 10.15 <i>Saturday</i> | 10.35 | — | — | 11.20 <i>Saturday.</i> | — | 11.42 |

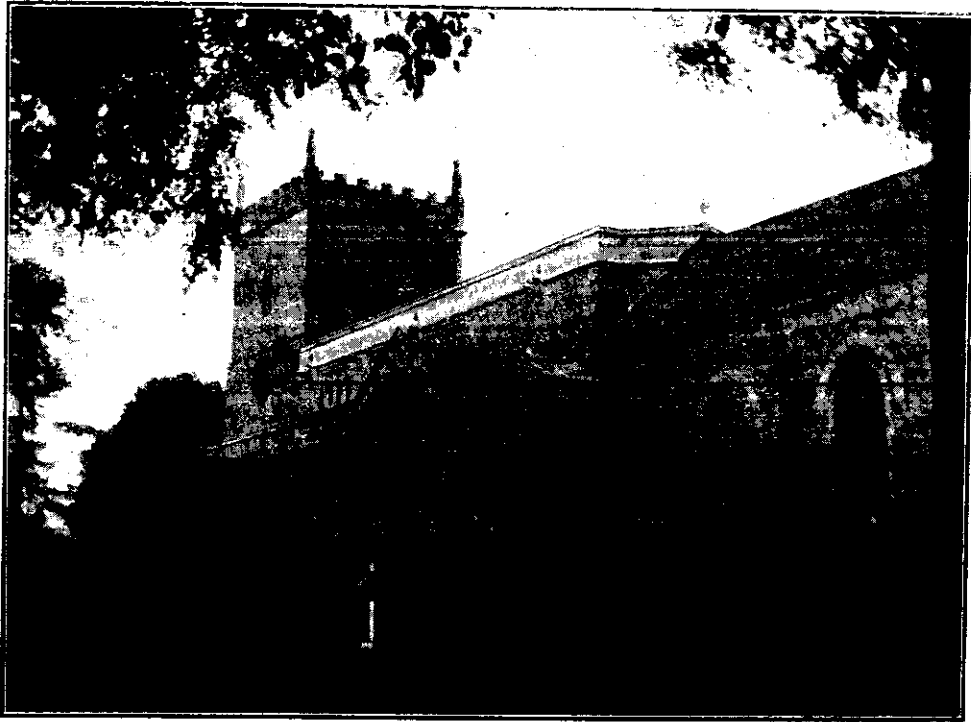
SUNDAYS.

| | | | | | | | |
|------|-------|------|------|-------|-------|-------|-------|
| — | 12.41 | — | 1.0 | — | 10.10 | — | 10.29 |
| 3.3 | — | 3.27 | — | 11.40 | — | 12.4 | — |
| 4.55 | — | 5.18 | — | 2.10 | — | 2.33 | — |
| — | 6.48 | — | 7.10 | 6.3 | — | 6.28 | — |
| 8.35 | — | 9.0 | — | — | 8.10 | — | 8.29 |
| — | — | — | — | 9.58 | — | 10.20 | — |

*Newark trains.

N.B.—All the G.N.R. train stop at London Road (High Level Station) as well as at the Victoria Station

EAST BRIDGFORD MAGAZINE.



St. Peter's Church, East Bridgford.

Services.

HOLY COMMUNION:—

On all SUNDAYS (except last in Month) and HOLY DAYS at 8 a.m. and after Morning Prayer on the First Sunday in the Month.

On the last Sunday in the Month : Matins at 10 ; Choral Eucharist 10.45.

MORNING AND EVENING PRAYER:—

Sundays at 10.45, and 6.30 p.m.

Weekdays, Wednesday and Friday at 10 and 6.30 p.m. daily

HOLY BAPTISM:—

Second Sunday in month at 3, or at other Services on due notice.

CHURCHING OF WOMEN:—

Wednesday and Friday at 10, or before any Service on due notice.

SUNDAY SCHOOL AND CATECHISM:—

At 10 a.m. in the National School. Catechism in Church at 2.30.

POST OFFICE, EAST BRIDGFORD.—Under new arrangements which began June 19th, the delivery of letters now begins at 7.50 a.m. and 2.45 p.m. Letter Box cleared 12.30 p.m. and 5.20 p.m. The East Bridgford Wall-box is cleared at 5 p.m. Kneeton Wall-box is cleared at 4.45 p.m. Red Lodge box discontinued.

Hours of business are from 9 a.m. to 7 p.m., except on Tuesdays when the office is closed at 1 p.m.

WOMEN'S AGRICULTURAL WAR WORK.—A meeting was held on Monday, June 12th, in furtherance of the Appeal made by the President of the Board of Agriculture, to the women of every class to assist the farmers with their labour during the war, and to farmers not to reject a form of labour to which they are not hitherto accustomed. Mr. A. N. Hickling was in the chair, and Mrs. Davies, a lecturer, provided by the Board of Agriculture, gave a vivid and interesting address. It was so full of matter spoken from her own wide experience in Canada, that some of the audience unfortunately failed to distinguish two important points which she brought out, and even thought them mere "Traveller's tales." One point was the many and varied occupations which a woman in the lonely Canadian farms can and does undertake herself: the other point was her description of the extraordinary extent and possibilities of the labour-saving devices which are used by large Canadian farmers, and their readiness to adopt new methods of overcoming old difficulties. A Registry for women desirous of undertaking agricultural work has been opened. Applications to be made to Miss Fox.

THE SCHOOL.—The period for which the School Managers were appointed expired on June 30th. The same managers have in every case been re-appointed, namely; The Rector (ex-officio), Mr. J. Wilkinson (nominated by the Rector), Mr. W. A. Hodges and Mr. J. Pickford (Foundation managers), Miss Fox (by Local Education Authority), Mr. A. W. Mason (by Parish Council).

We regret to find an outbreak of Measles among the children.

THE NATIONAL MISSION OF REPENTANCE AND HOPE.—The meeting arranged for the nineteen parishes of the Rural Deanery of Bingham on June 28th, was most successful and inspiring. A fine evening enabled us to enjoy the tea in the garden of Bingham Rectory, and the Service of Intercession in Bingham Church conducted by the Rector of Bingham was attended by a congregation which quite filled the Church.

The meeting at 7 p.m., on the lawn, with an audience of some 400, was presided over by Rev. A. D. Hill as Rural Dean. The Ven. W. J. Conybeare, Archdeacon of Nottingham and Rector of Southwell, was the principal speaker. He pointed out how Nature, History and Revelation all lead us to the knowledge of God, and warned us that those who live without God were those who must be prepared to see their country sink into moral decay. Not only must this be in our thoughts, but we must give it out to others, in our talk and our actions, if we are to prove ourselves true members of a Church militant and not dormant.

The Rev. H. Biddell, Vicar of St. Paul's, Nottingham, spoke as one of the Bishop's messengers in the Mission, on the fundamental need of Reality, Activity and Fellowship, in the work we are called upon to do for God and our land. It is especially in the home, which is God's institution for man's up-bringing, that everyone can find a sphere of work and influence for good. He introduced Mr E. Osborne, a working man from Nottingham, who, in an impressive speech, gave testimony from his own experience of how one man can help another, and of what the guidance and method of the Church could do. Mrs H. Wyles proposed a vote of thanks to the speakers, and the meeting closed with the singing of "God Save the King."

With this magazine, a card of prayers for this Mission time is given. Will you pin it up in your houses, and use it with your families? A leaflet explaining the meaning of the Mission will also be distributed.

A CALL TO PRAYER.—Friday, August 4th, is the second anniversary of the day on which the nation was called to face the terrible ordeal of War. The day will be observed by a celebration of Holy Communion at 8 a.m., and a Special Service at 7 p.m. On this occasion, and on the following Sunday evening, let us all unite, not only in prayer for our country and our forces, but also in thanksgiving that God has enabled us to maintain the effort so prolonged, and for the steadfastness and self-sacrifice of our allies the French and the Russians. And let us pray earnestly in confidence for victory, that in God's time the right shall prevail.

G.F.S.—The Annual Festival will be held at East Bridgford Hall on July 27th, of the Bingham Branch of the Girls' Friendly Society. Service at 2.45 in Church.

COAL CLUB.—Payments begin on Monday, July 3rd.

EXTRACTS FROM PARISH REGISTERS.

BAPTISMS.

May 30th. Albert Norman, son of Albert and Emily Jollands.
 June 5th. Philip Clive, son of Charles and Hilda Catherine Moor.
 " 21st. Mary, daughter of John and Annie Lizzie Cameron.
 " " Sarah Lois, daughter of John and Annie Lizzie Cameron.

MARRIAGES.

June 19th. Walter Pacey and Elizabeth Richards
 " " Walter Henry Savage and Agnes Hannah Alvey.

LIGHTING-UP TIMES, half-an-hour after sunset, will be:—

July 8th, 8.58; 15th, 8.53 (Full Moon); 21st, 8.45; 30th, 8.33 (New Moon).

Lighted Windows must be obscured half an hour later than these times.

CHURCH RESTORATION FUND.

| | £ | s. | d. |
|-------------------------------|----|----|--------------|
| Amount acknowledged May, 1916 | .. | .. | .. 2224 14 2 |
| Mr J. R. Sharman | .. | .. | .. 1 0 0 |
| Church Box—May and June | .. | .. | .. 8 1 |
| Whitsunday Offerings | .. | .. | .. 6 4 7 |

Total June 12th, 1916 £2232 6 10

REPORT AND BALANCE SHEET.

June 12th, 1916.

It is with thankfulness to God that we are now able to present a Balance Sheet and Report of the Restoration Fund, which will be sent to all those who have so kindly contributed to it.

The Restoration of the Church was completed and the Church re-opened by the Bishop of the Diocese, on Saturday, May 23rd, 1914, fortunately before the outbreak of the War.

The cost of this work, begun in 1913, has been £2,361 11s. 7d., all of which has now been raised except £95 which still remains as a debt. Perhaps some of those who have already contributed will be disposed to add something to their former gifts and so help to defray this debt on the work in which they have already shown their interest.

It may be recalled that the Restoration of the Church was begun in 1902, when the Chancel, Tower and Porch, which were in the worst condition, were completed, and the restored Chancel was re-opened for divine service, April 30th, 1903. An organ chamber was provided later, and the organ renovated. The cost of this first portion of the work was £2,301 2s. 5d.

The second portion of the work, the restoration of the Nave and Aisles, and the re-hanging of the bells, 1913-1914, has cost £2,361 11s. 7d., as stated above, with additional gifts for the adornment of the Church of the value of £231. The whole sum expended during the twelve years in which we have been engaged in the work of Restoration, thus amounts to £4,893 14s. 0d.

It has been a long and heavy strain upon the patience and resources of a village of less than 800 inhabitants; and we take this opportunity of expressing our thanks to all those who have helped in the preservation and adornment of our Parish Church.

A. DU BOULAY HILL, *Rector.*

J. TURNER,
R. SWANWICK, } *Churchwardens.*

| | | |
|--|---|-------------------------------------|
| W. A. HODGES. JESSIE M. MILWARD. GERTRUDE FOX. H. GOLDSTON. | C. MILLINGTON. C. ALLWOOD. E. E. COVILLE. W. R. SHARMAN. | } <i>Members of Church Council.</i> |
|--|---|-------------------------------------|

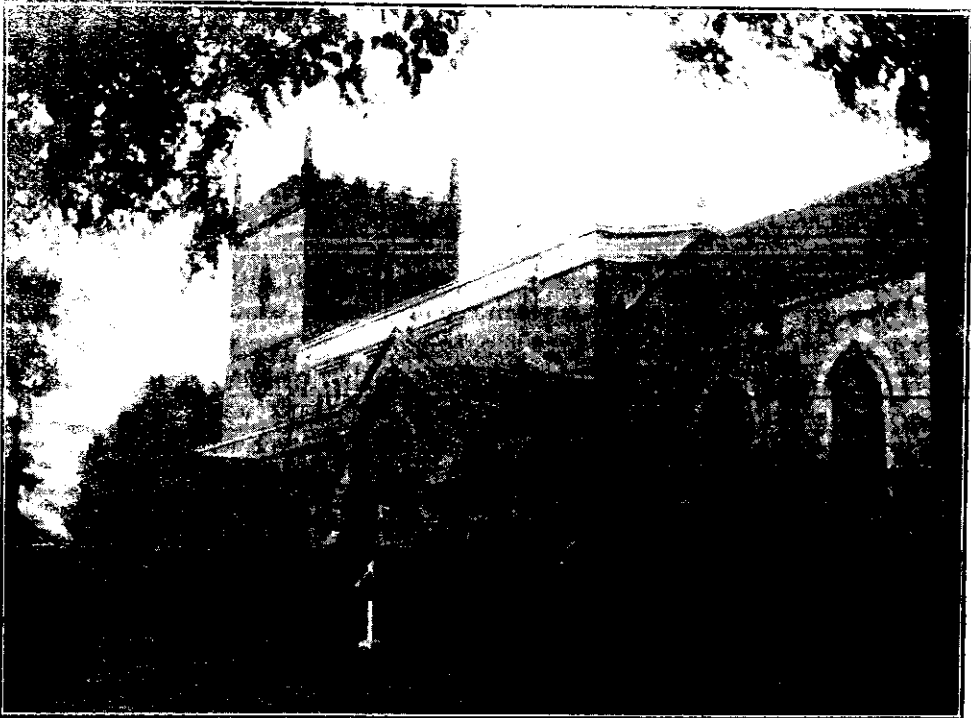
BALANCE SHEET, 1911-16.

| RECEIPTS. | £ | s. | d. | EXPENDITURE. | £ | s. | d. |
|-------------------------------------|--------------|-----------|----------|--------------------------------|------|--------------|-----------|
| Balance from previous Restoration | | | | Messrs. Maxey & Sons | 1921 | 4 | 5 |
| a/c 1910 | ... | 19 | 18 | Messrs. Gillett & Johnston | ... | 193 | 16 |
| Subscriptions | ... | 1438 | 10 | Additional Work in Tower, car- | | | |
| Collections in Church | ... | 427 | 19 | riage of Bells, etc. | ... | 21 | 9 |
| Notts Church Extension Society... | 100 | 0 | 0 | Messrs. Danks, Heating | ... | 63 | 16 |
| Incorporated Church Building Soc. | 40 | 0 | 0 | Record Board | ... | 18 | 14 |
| Sales and Entertainments | ... | 184 | 19 | Sundry additional work, seats, | | | |
| Church Box | ... | 19 | 2 | curtains, etc. | ... | 17 | 19 |
| Bank Interest | ... | 36 | 7 | Faculty... | ... | 5 | 5 |
| | | | | Printing | ... | 4 | 10 |
| | | | | Mr. C. E. Ponting, Architect | ... | 105 | 17 |
| Balance still owing June 12th, 1916 | 2266 | 17 | 11 | Bank charges on overdraft | ... | 8 | 18 |
| | | | | | | | |
| | <u>£2361</u> | <u>11</u> | <u>7</u> | | | <u>£2361</u> | <u>11</u> |
| | | | | | | | <u>7</u> |

JUNE 12TH, 1916.

W. A. HODGES, } *Treasurers.*
A. D. HILL, }

EAST BRIDGFORD MAGAZINE.



St. Peter's Church, East Bridgford.

Services.

HOLY COMMUNION:—

On all SUNDAYS (except last in Month) and HOLY DAYS at 8 a.m.
and after Morning Prayer on the First Sunday in the Month.

On the last Sunday in the Month : Matins at 10 ; Choral Eucharist 10.45.

MORNING AND EVENING PRAYER:—

Sundays at 10.45, and 6.30 p.m.

Weekdays, Wednesday and Friday at 10 and 6.30 p.m. daily

HOLY BAPTISM:—

Second Sunday in month at 3, or at other Services on due notice.

CHURCHING OF WOMEN:—

Wednesday and Friday at 10, or before any Service on due notice.

SUNDAY SCHOOL AND CATECHISM:—

At 10 a.m. in the National School. Catechism in Church at 2.30.

THE NATIONAL MISSION.—The object before us is this: The Church is preparing to call all men in every parish of our land to hear the voice of God. We have as a nation been slow to hear, but we are gradually learning a wider conception of what God's message is for us. The war is teaching us daily how any failure in duty, or act of carelessness, or lack of efficiency, may lead to disaster for thousands, and that the safety of the nation depends upon what each one brings to the service of all. It is a great lesson of corporate duty. But the voice of God is calling us to learn more of our corporate duty. in helping each other to serve Him better than we have done in the past; to help to make our nation more God-fearing; to put love in the place of pride, brotherliness in place of hardness, faith in place of indifference; to bring back habits of Church-going, bible-reading, family religion, where these have been neglected.

If our nation after the War is to rise to its full strength and development, it must listen to God's voice and follow in God's way, for our strength can only come from God. And if the Church is to teach men to change their minds and to think more of these things, the Church must be the one to do it first. We are all in it, and we all have our part to do as our corporate duty.

Will you then think of these things, use the prayers which have been given to you, and listen to the voice of God calling you. For unless *you* bear your part the Church will be one short, one worker will have failed to do his bit for the whole body.
A.D.H.

The Rev. J. D. Wood, Bishop's Messenger for the Mission, addressed a meeting of Communicants on July 25th on the mission, as a warning and as a witness, not as an end in itself, but as a beginning, to find out causes of failure so as to make for more efficiency in Church work hereafter.

THE SCHOOL was closed by the medical authority on July 12th, in consequence of the continued prevalence of measles. It will re-open on Monday, August 7th, until a suitable time comes for a short holiday, which will as far as possible be adapted to the requirements of the harvest.

The Bank Holiday of August 7th is postponed, in consequence of the importance of the uninterrupted continuance of all war-work at this time. We cannot be too thankful for the spirit in which this dire necessity has been universally accepted.

The first half of the month of July was very wet, most unfortunately for the beginning of the hay-harvest, and especially the clover crop. But the last fortnight of the month has brought real summer weather, which has been made the best use of in getting what we hope is an excellent hay crop.

Mr. Arthur Euerby wishes to express the thanks of himself and his family for the kindness and sympathy of many friends during his wife's long illness.

CHURCH RESTORATION FUND.

| | £ | s. | d. |
|---|----|----|----|
| Mr J. Curnow | 1 | 0 | 0 |
| Mr P. Newcombe | 1 | 0 | 0 |
| Rev. M. A. Dodds | 4 | 0 | |
| Mrs M. E. Richards | 2 | 6 | |
| Mrs Gleed | 10 | 6 | |
| Miss Barratt | 2 | 6 | |
| Mr H. Wyles | 2 | 0 | 0 |
| Rev. E. B. Hill | 3 | 3 | 0 |
| Miss S. A. Green | 10 | 0 | |
| Rev. H. A. Barker | 2 | 2 | 0 |
| Leut. C. Palmer | 1 | 0 | 0 |
| Rev. A. D. Hill and Mr J. Turner, for Bank charges, to June 30th. | 3 | 0 | 6 |

£ 14 15 0

The amount still owing is £82 19s. 2d.

EXTRACTS FROM PARISH REGISTERS.

BAPTISMS.

July 1st. Charles Ernest, son of George Ernest and Emily Beatrice Thraves.
" 23rd. Francis Arthur, son of John and Emma Cooper.

BURIAL.

July 15th. Annie Euerby, aged 56 years.

LIGHTING-UP TIMES for August (corrected for East Bridgford, Summer time):—

August 6th, 9.21; 13th, 9.6 (Full Moon); 20th, 8.51; 28th, 8.33 (New Moon).

Lighted Windows must be obscured half an hour later than these times.

THE WAR.—We are now entering on the third year of the War. Friday, August 4th, is the anniversary of the day on which war was declared, and as announced in the July Magazine we mean to observe the day and the following Sunday with special prayer, and thanksgiving as well—for God's help in the steadfast and self-sacrificing spirit shown in our own land and by our Allies.

A meeting for this purpose will be held in the Temperance Hall at 7.30 on Friday. The Holy Communion will be celebrated at 8 a.m. on that day and at 7 a.m. and Mid-day on Sunday, August 6th, when a special act of prayer will also be made after Evensong.

The following have been wounded severely and are in hospitals in England, where we trust they are making a good recovery, Second-Lieut. Eric Watts, Second-Lieut. Henry Percy Goldston and Private Tom Thraves.

Private Whittle Cloxton and Second-Lieut. Roderick Milward have also been wounded, but have now been able to return to their duties. Private Horace Wilkinson is also reported wounded.

We regret to learn that Private Walter Powell, of Car Colston, and late Gardener at East Bridgford Hall, was killed in action last month.

The sad news has just been received of the death of Bombardier Horace Cloxton. He was severely wounded about July 17th and died next day after reaching hospital.

The following lists contains the names of those who have gone from East Bridgford to serve in Navy or Army.

THE ROLL OF HONOUR OF THOSE WHO HAVE FALLEN,

Urban Blagg, Pte. 2nd Sherwood Foresters. Oct. 20th, 1914.
 Ernest Goddard, Pte. 1st Lincs. Feb. 5th, 1915.
 Herbert Richards, Sapper. Royal Engineers. May 25th, 1915.
 Frank Thraves (Gunthorpe), Pte. 1st Sherwood Foresters. July 30th, 1915.
 John Rudkin (Newton), Pte. 8th Sherwood Foresters. July 30th, 1915.
 William Kirkham (Newton), Pte. 8th Sherwood Foresters. August 14th, 1915.
 William Henry Manchester Gun, Pte. 12th Sherwood Foresters. Sept. 20th, 1915.
 John Henry Upton, Pte. 2nd Grenadier Guards. Nov. 22nd, 1915.
 Horace Cloxton, Bombardier R.F.A. July 18th, 1916.

| | | |
|----------------------------|----------------------|--------------------------|
| John Cloxton | Henry Talkes | Harry Stanley |
| John William Carrington | Albert Jallands | William Bernard Peatman |
| Rupert Blagg | Arthur Pepper | Walter Pacey |
| Bentley Blagg, R.N. | Arthur Pailing | Douglas Hallam |
| Joseph Allwood | Ernest Charles Smith | Charles Hugh Brambley |
| Charles Wilkinson | Joseph Cox | Bernard Simpkin |
| Robert Moss | Harold Watts | Walter Savage |
| Sidney Bateman | Eric Watts | Frank Curtis |
| Charles Walter Bateman | Francis Wilkinson | Edwin Hunt |
| George Bateman | Robert Wilkinson | Charles Kirkland Allwood |
| John Marshall | Horace Wilkinson | Alfred Watson |
| Robert Marshall | George Cartwright | Anthony Victor Dent |
| Fred Marshall | John Crossland | George Higgs |
| Henry Percy Goldston | Arthur Crossland | Ernest Cloxton |
| John Raynor | William Waterfield | George Gower |
| Samuel Hatfield Smith | Harry Ellis | |
| John Mills | Arthur Thraves | |
| Robert Kingsley Weatherell | Herbert Dickenson | |
| Cuthbert Weatherell | John Henry Shardlow | |
| Herbert Milward | George Crossland | |
| Gervase Milward | Whittle Cloxton | |
| Richard Milward | Harry Cloxton | |
| Roderick G. Milward | Tom Thraves | |
| Leonard Cliff Hodges | William Mussell | |
| William Hodges, M.D. | William Cooper | |
| Harold Augustus Hodges | William Mann | |
| Reginald John Hodges | Robert Gower | |
| Cecil B. Robinson | John Cecil Pickford | |
| Charles Moor | Rowland Upton | |
| Arthur Richardson | George Widdison | |
| Claude Smith | George Pepper | |
| Bernard Smith | Fred Hunt | |
| Ephraim Breedon | Charles Atkinson | |

To these we may add the following names of others from East Bridgford families, or who have been boys at School here :—

| | | |
|-----------------------|------------------------|------------------------|
| John Chapman | Donald H. Richardson | Frank Euerby |
| Ernest Edward Chapman | George Worthington | Harold Mason |
| Richard Thraves | Henry Holmes | Albert Edward Maxfield |
| Samuel Blagg | Joseph Osborne | |
| Herbert Blagg | Leonard Cheetham | |
| Joseph Rogers Brewitt | Tom Cheetham | |
| John William Brewitt | Herbert Gamble | |
| Percy Forrest | John Frederick Baldock | |
| Richard Forrest | Wilfred Euerby | |

EAST BRIDGFORD MAGAZINE.



St. Peter's Church, East Bridgford.

Services.

HOLY COMMUNION:—

On all SUNDAYS (except last in Month) and HOLY DAYS at 8 a.m. and after Morning Prayer on the First Sunday in the Month.

On the last Sunday in the Month : Matins at 10 ; Choral Eucharist 10.45.

MORNING AND EVENING PRAYER:—

Sundays at 10.45, and 6.30 p.m.

Weekdays, Wednesday and Friday at 10 and 6.30 p.m. daily

HOLY BAPTISM:—

Second Sunday in month at 3, or at other Services on due notice.

CHURCHING OF WOMEN:—

Wednesday and Friday at 10, or before any Service on due notice.

SUNDAY SCHOOL AND CATECHISM:—

At 10 a.m. in the National School. Catechism in Church at 2.30.

We are drawing near to the time of the National Mission of Repentance and Hope. It cannot be too often explained that the purpose of this is the delivery of God's message to the nation. This has been continually kept before us, and it is to be hoped that not a few among us have thought seriously of the call that God is making to the whole nation at this crisis. As the nation is made up of individuals, the answer to God's call depends upon the attention that each individual gives to it. And upon that attention depends the prosperity, the blessings, perhaps even the very existence of the Empire that God has entrusted to us.

In these three ways we may all take our part in preparing for the Mission:— (1) Make a step forward yourself in your religion: (2) Don't be ashamed to show your Christian faith before the world: (3) Help others to do right by example, kindly words, and good living.

Friday, August 4th, was duly observed as the anniversary of the day on which the Nation was called upon to face the terrible ordeal of war, as announced last month.

On Sunday, August 6th, a collection was made in Church for the Red Cross and St. John's Ambulance Joint Fund, and £4 10s. was sent up. A Special Service of Prayer and Intercession was held after evensong, as this was the first Sunday in the third year of the War. A similar service was held also on Sunday evening, August 27th, and another will take place on **September 24th at 7.30 p.m.** It is our earnest desire that those who have given up habits of Church-going may be drawn to join in these short and simple services, at a time when we all need to turn to God for help and strength.

The terrible perils of War-time were brought very near to us on Sunday, August 13th, when many inhabitants of East Bridgford were eye-witnesses of an awful accident. Second Lieut. Charles Ivan Carryer, aged nineteen, of the East Yorkshire Regiment, attached to the Royal Flying Corps, descended in his biplane in a meadow to inquire his way to his home in Leicester. On resuming his flight, he crossed the river, and his machine struck the roof of a building, and falling to the ground, burst into flames. He was severely burnt, and died from his injuries in the Nottingham hospital that evening. A very touching message was given by the Rector in Church on the following Sunday, from his father, Mr Carryer, of Leicester, who expressed his grateful thanks to all those who had helped to alleviate his son's suffering.

WAR SAVINGS ASSOCIATION.—At an open air meeting held at East Bridgford on Saturday, August 12th, at 7.30 p.m., it was decided to form an association for the village. The Rector was in the Chair, and the meeting was addressed on the subject by Mr Payne, Secretary for Nottingham and the County, and by Mr A. W. Mason. The Association was then formed, with Mr J. Wilkinson, Chairman; Mr A. W. Mason, Secretary; Rev. A. D. Hill, Treasurer; and a Committee consisting of Messrs. Charles Wilkinson, R. Hall, J. Cooper, F. Collishaw, A. Knight, F. Thornton, E. E. Coville, A. May, J. Mussell, C. Kirkland, Mrs Mason and Miss Fox.

The object of the Association is to give facilities for the accumulation of small sums for investment in the National War Loan. By doing this, our Country will be helped to win and end the War. It is moreover a good investment for money, for each War Savings Certificate, costing 15/6, is worth 15/9 at the end of the first year, and after that increases in value by one penny a month, until at the end of five years, it is worth 20/-. It can be cashed at its value at any time if required.

The office of the Association is at Mr A. Mason's house, Lea Bank, and is open on Saturday evenings from 6 p.m. to 7 p.m. for receiving payments of weekly contributions of small sums in sixpences. Payments may also be made to collectors, who will call when desired by members of the Association.

An affiliated association has also been formed at the school, where children can bring any sum from one penny upwards, on Monday mornings.

By a Flag Collection in East Bridgford on Saturday, August 19th, on behalf of the Nottingham General Hospital, £3 11s. 3½d. was obtained.

THE WAR.—The sad news has been received during the past month of two more soldiers, whose parents are now living in East Bridgford, and whose names must be added to our Roll of Honour of those who have fallen:—

Herbert Bullock, Cyclist Corps. Killed in action, July 4th.
Pte. Charles Hugh Brambley, Royal Berkshire. Killed in action, July 3rd.

The following have been called up for service during the last month:—
Tom Wilkinson, Edward Bullers, Charles Ellis. The names of John Upton and Frederick William Clough should be added to the list of those from East Bridgford families who are already serving.

CHURCH RESTORATION FUND.

Subscriptions towards the debt of £94 13s. 8d., June 12th, 1916, (not including Bank charges on overdraft).

| | £ | s. | d. |
|---|------|----|----|
| Amount acknowledged, August, 1916 | 11 | 14 | 6 |
| Rev. F. H. Du Boulay | 1 | 0 | 0 |
| H.E. | | 5 | 0 |
| Miss E. Bramby | | 2 | 6 |
| Misses E. and K. Clough | 10 | 0 | 0 |
| Miss E. C. Margetts | | 5 | 0 |
| Church Box, July—August | | 8 | 7 |
| | £ 14 | 5 | 7 |

FRUIT BOTTLING WITHOUT SUGAR.—The Board of Agriculture and the National Patriotic Associations have issued instructions for fruit bottling which should be useful to small holders, now that the difficulty in obtaining sugar is so great. This plan enables the grower to make the fullest use of all fruit which reaches maturity, by preserving it for home consumption or for sale during the months when fresh fruit is unobtainable.

Mrs Hill will be glad to supply suitable bottles with covers for 2½d. each, with instructions in the simplest method recommended, to any who apply to her at the Rectory.

EXTRACTS FROM PARISH REGISTERS.

BAPTISM.

August 6th. Marjorie Ellen, daughter of George and Maggie Dalton.

BURIAL.

August 9th. Sarah White MacDougall, aged 59 years.

LIGHTING-UP TIMES for September (corrected for East Bridgford, Summer time) :—

Sept. 5th, 8.14; 11th, 8.1 (Full Moon); 18th, 7.41; 27th, 7.22 (New Moon).

Lighted Windows must be obscured half an hour after these times

On Saturday night, Sept. 30th, clocks will be put back one hour, and we shall return to ordinary Greenwich time on Sunday, October 1st.

Time Table for East Bridgford of Trains to and from Nottingham, for September, 1916.

| | Leave | | Arrive Nottingham | | Leave Nottingham. | | Arrive | |
|----------------------|-----------------------------|-----------------|---------------------|------|-----------------------|--------------------------|------------------|----------|
| | Bingham. | Lowdham. | G.N.R. Victoria. | M.R. | G.N.R. Victoria. | M.R. | Bingham. | Lowdham. |
| — | 6.58 | — | 7.18 | — | 5.25 | — | 5.48 | — |
| 7.30 | — | 7.54 | — | — | 6.0 | — | — | 6.19 |
| — | 7.46 | — | 8.5 | — | 6.28 | — | — | 6.47 |
| 8.20 | — | 8.45 | — | — | 7.15 | — | 7.38 | — |
| — | 8.25 | — | 8.45 | — | — | 7.20 | — | 7.39 |
| — | 8.59 | — | 9.20 | — | *8.10 | — | 8.34 | — |
| 9.4 | — | 9.28 | — | — | — | 8.32 | — | 8.51 |
| *9.43 | — | 10.6 | — | — | 9.25 | — | 9.48 | — |
| 9.51 | — | 10.12 | — | — | *10.25 | — | 10.47 | — |
| — | 9.56 | — | 10.22 | — | — | 11.25 | — | 11.46 |
| 11.59 | — | 12.23 | — | — | 11.50 | — | 12.13 | — |
| — | 1.35 <i>except Sat.</i> | — | 1.55 | — | — | 12.45 <i>except Sat.</i> | — | 1.3 |
| *1.40 | — | 2.4 | — | — | — | 1.5 | — | 1.24 |
| 2.1 | — | 2.25 | — | — | * 1.50 | — | 2.13 | — |
| — | 2.4 | — | 2.27 | — | — | 2.0 | — | 2.18 |
| — | 2.27 | — | 2.47 | — | 2.8 | — | 2.26 | — |
| — | 3.25 <i>holidays</i> | — | 3.40 | — | 2.43 | — | 3.6 | — |
| *3.30 | — | 3.54 | — | — | 4.12 <i>Saturdays</i> | — | 4.33 | — |
| — | 4.22 | — | 4.40 | — | — | 4.40 | — | 4.59 |
| — | 4.48 | — | 5.10 | — | * 5.0 | — | 5.23 | — |
| 4.57 | — | 5.21 | — | — | — | 6.10 | — | 6.29 |
| 5.7 <i>Saturdays</i> | — | 5.30 | — | — | 6.15 | — | 6.38 | — |
| — | 6.36 | — | 6.55 | — | — | 6.43 | — | 7.4 |
| 6.44 | — | 7.8 | — | — | — | 7.50 | — | 8.10 |
| — | 7.51 | — | — | — | 7.40 | — | 8.6 | — |
| *9.2 | — | 9.26 | — | — | 8.47 | — | 9.13 | — |
| 9.10 | — | 9.34 | — | — | — | 9.20 | — | 9.39 |
| — | 9.45 | <i>Saturday</i> | 10.5 | — | 9.55 | — | 10.19 | — |
| — | 10.5 <i>except Saturday</i> | — | 10.25 | — | 11.0 | <i>Wed. and Sat.</i> | 11.24 | — |
| — | 10.15 <i>Saturday</i> | — | 10.35 | — | — | 11.20 | <i>Saturday.</i> | 11.42 |

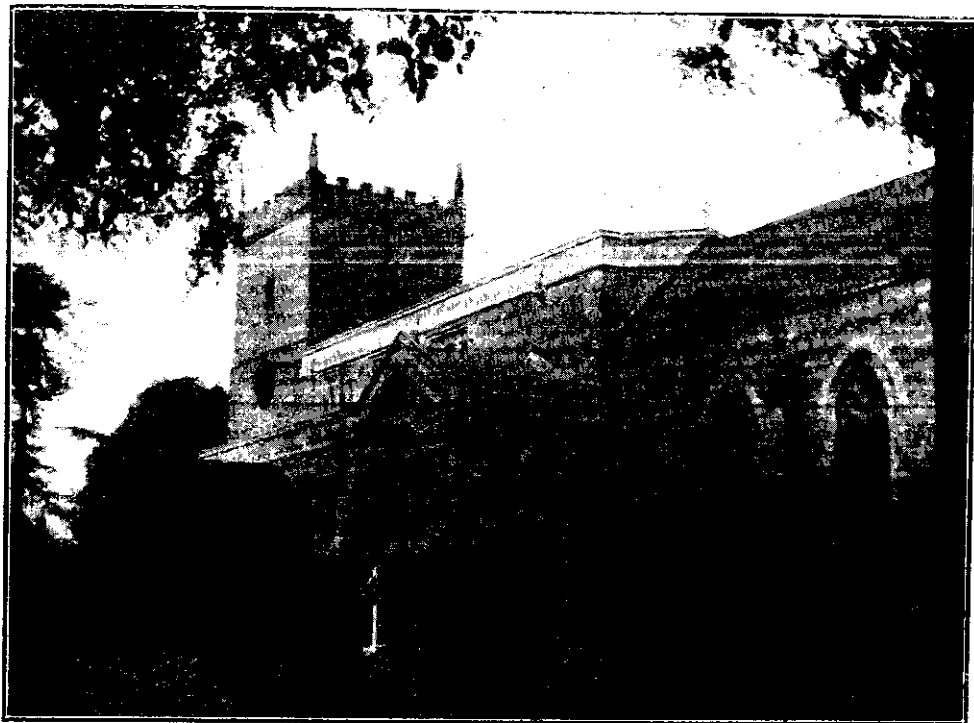
SUNDAYS.

| | | | | | | | |
|------|-------|------|------|-------|-------|-------|-------|
| — | 12.41 | — | 1.0 | — | 10.10 | — | 10.29 |
| 3.3 | — | 3.27 | — | 11.40 | — | 12.4 | — |
| 4.55 | — | 5.18 | — | 2.10 | — | 2.33 | — |
| — | 6.48 | — | 7.10 | — | 2.50 | — | 3.9 |
| 8.35 | — | 9.0 | — | 6.3 | — | 6.28 | — |
| — | 8.12 | — | 8.33 | — | 8.10 | — | 8.29 |
| — | — | — | — | 9.58 | — | 10.20 | — |

*Newark trains.

N.B.—All the G.N.R. trains stop at London Road (High Level Station) as well as at the Victoria Station

EAST BRIDGFORD MAGAZINE.



St. Peter's Church, East Bridgford.

Services.

HOLY COMMUNION:—

On all SUNDAYS (except last in Month) and HOLY DAYS at 8 a.m.
and after Morning Prayer on the First Sunday in the Month.

On the last Sunday in the Month : Matins at 10 ; Choral Eucharist 10.45.

MORNING AND EVENING PRAYER:—

Sundays at 10.45, and 6.30 p.m.

Weekdays, Wednesday and Friday at 10 and 6.30 p.m. daily

HOLY BAPTISM:—

Second Sunday in month at 3, or at other Services on due notice.

CHURCHING OF WOMEN:—

Wednesday and Friday at 10, or before any Service on due notice.

SUNDAY SCHOOL AND [CATECHISM:—

At 10 a.m. in the National School. Catechism in Church at 2.30.

THE NATIONAL MISSION OF REPENTANCE AND HOPE.—We have been hearing about it, and many of us have been preparing for it and trying to understand its meaning and purpose.

Our Nation is passing through a momentous crisis in its history. The war is bringing great changes, and it is not too much to say that a new England will arise after the war. Will this new England be a better England? We cannot doubt that it is God's good purpose. God did not make the war. Warfare, strife, bloodshed must surely be hateful in His sight. Yet God can over-rule evil for good; and we may surely believe that he is seeking to purify us by this fiery trial, that we may come forth from it a better, wiser, holier nation than we have been in the past.

Already, thank God, our national life shows signs of a change for the better. In the new-born spirit of mutual helpfulness and service, in the manifold efforts to relieve pain and suffering, in the laying aside of party strifes and divisions, we can see evidences of this change for the better. But something far deeper, far more sweeping and thorough, is required, if God's good purpose towards us is to be realised. As a nation we must repent of our sins; we must turn to God and seek His forgiveness; and we must make a determined resolve to amend our ways. Then, and then only, can we hope for any thorough, lasting reform.

There is no need to enlarge upon such national sins as intemperance, impurity, gambling, the inordinate pursuit of pleasure, and so on. At the root of all lies the one great sin that, as a nation, we have to a large extent *lost touch with God*. We speak of England as a Christian country—but *is it?* What has the religion of Jesus Christ to do with our trade, our politics, our national life and aims? How far does it rule and control these? True, there are in our land a multitude of real, earnest Christian men and women. Yet the fact remains that, as a nation, we have in a large measure discarded religion, cast off our allegiance to God, and cut ourselves adrift from Him.

Now God has come to us in this great war. He has come to us, not only in the havoc and misery that the war has wrought, but also in the dawning of new hopes, new aspirations, a new sense of brotherhood and of our responsibilities one to another as citizens of one nation. God has come to us in judgment and in mercy, that He may humble us, and draw us to Himself. The crisis through which we are passing is a Call to Repentance and Hope. It is **God's Call to our Nation**.

How is the call to be brought home to the Nation? How is England to be roused to listen? It is for men and women in every parish to proclaim God's call throughout the land by their lives and actions, and press it home to the hearts and consciences of others round them. This is the object of the National Mission. This is the Message which the Church has to deliver. It is no new Message, but the old Message of the Gospel of Jesus Christ. The war has come, and with it and through it the call to think afresh and start afresh, with renewed Christian loyalty.

In our parish of East Bridgford, the DELIVERY OF THE MESSAGE will take place from October 7th to 11th. The Bishop's messenger who comes to us then is the Rev. A. T. Cowen, Vicar of Bradwell, Derbs.

On Saturday, Oct. 7th.—The Mission Litany of Intercession and address, 7 p.m.

Sunday, October 8th.—Holy Communion at 8; Morning Service, 10.45; The Catechism at 2.30; Evensong, 6 p.m. The weather permitting, an open-air service will take place at 7.30 p.m., by moonlight, after evening service in Church. Monday, Oct. 9th.—Address to women, 3 p.m.; Evensong and sermon, 7. Tuesday, October 10th.—Sermon at Evensong, 7. Wednesday, October 11th.—Final address. There will be a celebration of Holy Communion on each of these days.

Let us throw ourselves heartily into the work of the National Mission. But do not let it be supposed that it will be over in these few days. All we can hope for is that the ground may be broken, and the good seed sown, which by God's blessing will grow and in due season bring forth fruit. The work of the National Mission will have to be followed up patiently for months and years to come, if England is to become, in reality as well as in name, a Christian land.

A SERVICE carrying out the thought of the Church's Corporate Act of Penitence was held in Southwell Minster on Wednesday, September 20th, and in all the Churches of the Diocese on Friday, the 22nd, in preparation for our solemn task of the Church's Mission to the Nation.

On Sunday, October 1st, we shall revert to the old time. Clocks will be put back one hour on the previous night, and we shall no doubt find the change as little noticeable after the first surprise as we did when they were put forward on May 22nd.

On Sunday, Oct. 1st, and during the winter, the Sunday evening service will be at 6 o'clock. By subduing the lights in Church, we hope to be able to continue this arrangement, which will be generally preferred to an afternoon service.

Sunday, Oct. 15th, will be our Harvest Thanksgiving Day, with thoughts of thankfulness, let us hope, for the Mission work, and for the blessings which we have received in many ways, in the preservation of our Land from incursion of our enemies. The offerings will be for the Sunday School Fund.

On Sunday, October 22nd, the services will be taken by the Rev. W. R. Trevitt, in the absence of the Rector. Collections will be made for the Bishop's Diocesan Funds, in order that we may at least be able to contribute the full amount asked for from the parish. Mr. Trevitt is the organizing Secretary of the Church Extension Society.

Sunday, Oct. 29th, Mattins at 10, Choral Celebration of Holy Communion at 10.45.

Nottinghamshire came under the regulations of the Liquor Control Board on Monday, Sept. 25th. While we welcome any action on the part of our Government to meet the difficult questions that arise on this subject, we cannot help regretting that the Sunday hours of opening Public Houses just at the hour of Divine Service should be continued. We are still a long way behind the self-sacrificing example of Russia, and the excellent lead given by King George and many others, in abstaining from alcohol during the war.

THE ROLL OF HONOUR.—We are grieved to hear that Lt. Cecil B. Robinson, West Yorks Regt. was killed in action on Sept. 14th, in France. He had served through the Gallipoli campaign and was 31 years old.

The name of John Upton in last month's Magazine among those from East Bridgford families now serving, should have been given as Harry Upton. The names of Leonard Wilkinson, and George Cloxton, are now added to the list.

CLOTHING CLUB.—Members of the Club should bring their cards to the Rectory at 10.30 on October 2nd.

THE BIBLE SOCIETY'S annual meeting is arranged for October 20th in the Temperance Hall. The Rev. A. Rowley will take the chair.

LIGHTING-UP TIMES for October corrected for East Bridgford, half-an-hour after sun-set, Greenwich time :—

Oct. 4th, 6.6; 11th, 5.48 (Full Moon); 19th, 5.30; 26th, 5.15 (New Moon).

Lighted Windows must be obscured half an hour after these times.

EXTRACTS FROM PARISH REGISTERS.

BAPTISMS.

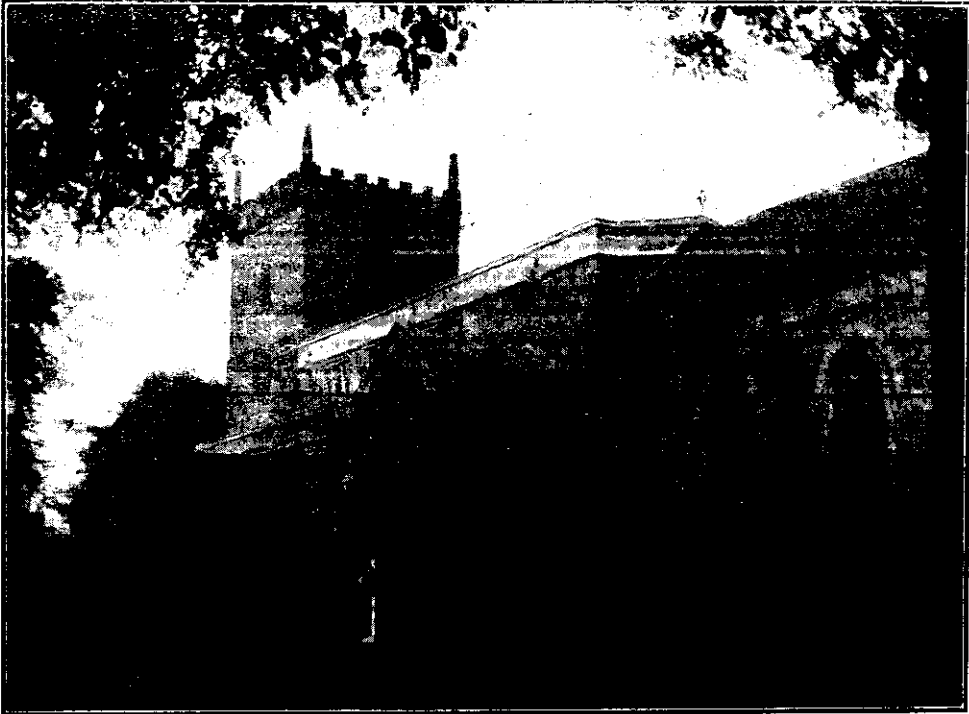
- Sept. 3rd. Bernard William, son of William Bernard and Ethel May Peatman.
„ 10th. Herbert Francis, son of Herbert and Hilda Dickinson.
„ „ Albert Rowland, son of Albert and Norah Ellis.

BURIAL.

Aug. 17th. At *Ruddington*, John Derry Upton.



EAST BRIDGFORD MAGAZINE.



St. Peter's Church, East Bridgford.

Services.

HOLY COMMUNION :—

On all SUNDAYS (except last in Month) and HOLY DAYS at 8 a.m.
and after Morning Prayer on the First Sunday in the Month.

On the last Sunday in the Month : Matins at 10 ; Choral Eucharist 10.45.

MORNING AND EVENING PRAYER :—

Sundays at 10.45, and 6 p.m.

Weekdays, Wednesday and Friday at 10 and 6.30 p.m. daily.

HOLY BAPTISM :—

Second Sunday in month at 3, or at other Services on due notice.

CHURCHING OF WOMEN :—

Wednesday and Friday at 10, or before any Service on due notice.

SUNDAY SCHOOL AND CATECHISM :—

At 10 a.m. in the National School. Catechism in Church at 2.30.

THE NATIONAL MISSION OF REPENTANCE AND HOPE is the effort that is being made in every parish of England and Wales, and indeed elsewhere, to deliver God's Call to the Nation. It naturally leads up to a definite time for the delivery of the Message, though the method may differ in different places. Here in East Bridgford many of us have tried as simply and earnestly as we can, not only to show that we have listened to God's call, but that we are willing to bear our witness before all to its overwhelming seriousness. This was the meaning of the Mission—the Message delivered by the Bishop's Messenger, the Rev. A. T. Cowen, from October 7th to 11th.

We do not for a moment mean to imply that the Church of England is the only body of Christians who are sensible of this, or the only body trying to make their influence felt at this time; but we do feel more than ever that it is our duty as members of the Church to show forth our faith, not only with our lips, but in our lives, in our aims, in our trades and in our homes. We do feel that the sense of the brotherhood of Christian people needs to be made more real, the acknowledgement of Christ's Kingdom and rule needs to be expressed more openly.

A short account of the Rev. A. T. Cowen's addresses will be of interest to those who heard him, and perhaps to others.

1. SATURDAY.—Acts xi, 26, "Christians first." He urged us to make religion first in our lives. Too many put in a little religion as a kind of seasoning the last thing on Sunday, the last thing, as though it did not matter if time ran short; instead of showing the zeal and sincerity of those first called Christians, who were Christians first before all else.

2. SUNDAY MORNING.—1 Peter, iv, 17, "Judgment first." St. Peter warns us that judgment at the hands of God must begin at the Church of God, on its shortcomings. Our witness is so poor, we are not willing to be known as God's people, we are not showing our profession of faith.

3. SUNDAY EVENING.—Rev. ii, 4 and 5, "First love: first works." God is always calling us back to repentance and recovery of our first love and first works, and especially so in these terrible times. Try to understand what it is we ought to be doing, the things we talk about and don't do, the open door of the Church we don't use, the sense of brotherhood within the Church. How we have lost the sense of prayer, the sense of the unseen! if we enter a strange Church, do we kneel in prayer, or do we look around, as in a museum? Then there is reform needed in Church discipline and appointments, and greater freedom to reform ourselves. In more personal matters we need to return to the "first works." Do we give the honour we ought to the Sacraments of the Church? How many fathers take an interest in the baptism of their children? How many see that it is the incorporation of the child into the life of Christ? Is Sunday to us the glad day of Christ's resurrection, intended to bring our life into touch with Christ's life? We must get back to a faith in the life of the Church, linked with and supported by the life of our Lord through Holy Communion. The Saviour's voice calls us back to our first love. Let us remember the sublime courage of the Apostles going out to convert the world, the faith of the early martyrs, the love for God we have once known ourselves in the resolutions of our Confirmation and the fervour of our first Communion. Let us recover what we have lost.

4. MONDAY.—St. Matthew vi, 33, "First the Kingdom of God." Does not the Kingdom of God mean better times in store? If we don't believe it, why do we pray, Thy Kingdom come? We must not spoil its coming by expecting the wrong things, such as personal gains at others' expense; but there are ways in which we may expect the Kingdom of God to come with blessings. We can be what God wants us to be, in fuller understanding of the brotherhood of man, so often ignored in social and commercial ways. It is God's Kingdom, God's will that we must begin to seek, and then material blessings will come quite naturally. What is truly based on Christ-like performance of duty will be brought to perfection by God—"All these things will be added unto you." If we seek first the Kingdom of God, all other duties fall into their proper places.

5. TUESDAY.—2 Corinthians, viii, 5, "First gave their own selves." It is possible to be religious and yet not have the right motive. There were many who admired our Lord, and would have followed Him on certain terms, up to a certain point, yet He seemed to be severe and to keep them back. His own few He had indeed chosen, but was constantly sifting and testing them to prove the right motive. The gaining of comfort and rest offered by Christ is not to be the first or only motive: He warns us of the weariness of the Cross. Religion is often encouraged as a support to morality, but this is not to be the first motive; it cannot alone carry us to the heart of truth and life. "First gave their own selves"—personal loyalty and personal love is the true motive in religion: comfort, joy, righteousness will follow in due place. If you have learnt this lesson, you have got the Message; if you have found your way into this touch with Christ, it is a sign that He has chosen you, and you have learnt His love for you through the Cross.

In explaining the resolution card, which he offered to those who desired some memorial of the preaching of the Message, the Messenger said: Our witness must be to acknowledge our real citizenship in Christ's Kingdom; and our resolution must be to make other people feel that all we say or do is in the atmosphere of Christ's character and words, so that we may help to win the whole world for God."

(The Rector is still able to supply cards to those who wish for them).

6. WEDNESDAY.—1 John, iv, 19, "Because He first loved us." This was the subject of the few earnest last words spoken at the Holy Communion on Wednesday morning.

On Sunday, after the evening service, the Clergy and choir, headed by the Cross, and followed by the greater part of the congregation, proceeded through the village to the open space between Straw's and Brown's Lane, where the Rector and the Bishop's Messenger gave short addresses. The beautiful moonlight, the mild evening air, the reverence of the company gathered there, the well-known hymns, the remembrance of the sorrow and loss that has come to our village in this war-time, will surely long remain in our memories as a witness of the Church's Mission of Repentance and Hope in the fight for the future.

HARVEST FESTIVAL.—Our thanksgivings were made on Sunday, Oct. 15th. The Rector preached at the morning and evening services, pointing out that our thanks were due to Almighty God, not only for the blessings of the harvest, but for the Mission that had been held the previous week, for the

preservation of our land from disasters, for the spirit of true devotion in our sailors and soldiers, and for the successes already gained by our forces by sea and land and air. The harvest offerings of £4 16s. 4d. were for the Sunday School Funds.

THE ROLL OF HONOUR—Another name must be added to our list of those who have died for their country. Pte. George Moss Pepper, Northumberland Fusiliers, was, we grieve to record, killed in action on September 15th, aged 31 years.

We are sorry to learn that Robert Marshall, Pte., Sherwood Foresters, has lost a leg as a result of wounds.

CHURCH RESTORATION FUND.

Subscriptions towards the debt of £94 13s. 6d., on June 12th, 1916, (not including Bank charges on overdraft defrayed by Mr Turner and the Rector).

| | £ | s. | d. |
|---|----------|----|----|
| Amount acknowledged, September, 1916.. .. | 14 | 5 | 7 |
| Mr F. T. Perry | 1 | 0 | 0 |
| Church Box, September—October | 16 | 2 | 0 |
| Mr W. A. Hodges | 20 | 0 | 0 |
| | ----- | | |
| | £ 36 1 9 | | |

On October 20th, the annual meeting of the British and Foreign Bible Society was held in the Temperance Hall. The Rev. A. Rowley took the chair, and an address was given by Rev. W. Roberts.

On October 22nd, the Rev. W. R. Trevitt preached on behalf of the various Diocesan Funds of the Church Extension Society. The collection of £3 4s. brings our parochial contribution this year well over the assessed amount, making £11 5s. 3d. in all.

FOREIGN MISSIONS.—The Rev. A. W. Sale, from Edmonton, Canada, will give a lecture for the Society for Propagation of the Gospel in the Temperance Hall, on Friday, November 17th, at 7 p.m.

November 29th, the eve of St. Andrew's Day, is the day of Intercession for Foreign Missions.

The shopkeepers of East Bridgford have agreed to close their shops at 7 p.m. on Mondays, Tuesdays, Thursdays and Fridays, during the Winter. On Wednesdays the shops are closed at 1 p.m., and on Saturdays they remain open until 9 p.m.

LIGHTING-UP TIMES for November corrected for East Bridgford, half-an-hour after sun-set, Greenwich time :—

Nov. 2nd, 5.2 ; 9th, 4.49 (Full Moon) ; 17th, 4.37 ; 25th, 4.26 (New Moon).

Lighted Windows must be obscured half an hour after these times.

EXTRACTS FROM PARISH REGISTERS.

BAPTISMS.

- Sept. 24th. David Edward, son of Stanley and Sophia Westwater.
 " " Kathleen Marie, daughter of Walter and Greta Marie Widdowson.
 " 28th. May Verdun, daughter of George Harry and Annie Elizabeth Crossland.
 " " Florence Mary, daughter of John Thomas and Ellen Knight.

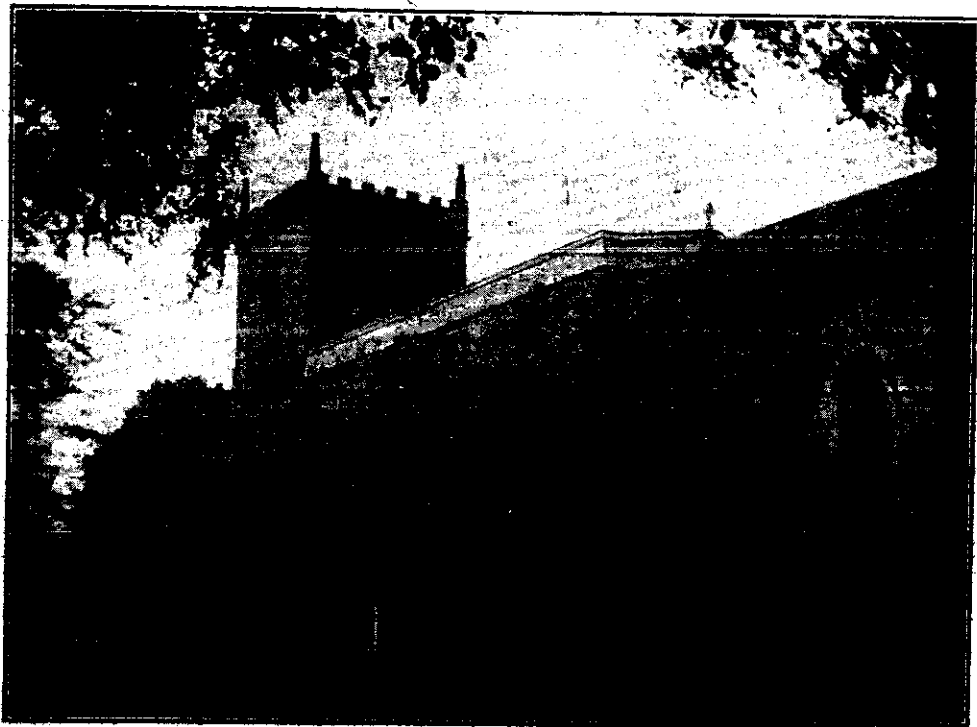
MARRIAGE.

- Oct. 3rd. Charles Kirkland Allwood and Frances Daisy Alvey.

BURIAL.

- Oct. 14th. William Richmond Knight, aged 4 years.

EAST BRIDGFORD MAGAZINE.



St. Peter's Church, East Bridgford.

Services.

HOLY COMMUNION:—

On all SUNDAYS (except last in Month) and HOLY DAYS at 8 a.m. and after Morning Prayer on the First Sunday in the Month.

On the last Sunday in the Month : Matins at 10 ; Choral Eucharist 10.45.

MORNING AND EVENING PRAYER:—

Sundays at 10.45, and 6 p.m.

Weekdays, Wednesday and Friday at 10 and 6.30 p.m. daily.

HOLY BAPTISM:—

Second Sunday in month at 3, or at other Services on due notice.

CHURCHING OF WOMEN:—

Wednesday and Friday at 10, or before any Service on due notice.

SUNDAY SCHOOL AND CATECHISM:—

At 10 a.m. in the National School. Catechism in Church at 2.30.

ADVENT, 1916.—On the Sunday before Advent, Nov. 26th, the close of the church's year was marked by an Intercession service after evensong, for our sailors and soldiers, for our country, for the restoration of a true peace and a new era, righteousness and mutual good goodwill.

The season of Advent now directs our thoughts to the coming of the Kingdom of Christ. Let us pledge ourselves anew to His service, believing in the ultimate destiny of mankind to fulfil God's will, and bearing the name written in our hearts, "The Lord our Righteousness."

An evening service will be held on Wednesdays in Advent at 6.30.

On Christmas Day, Monday, Dec. 25th, there will be celebrations of Holy Communion at 8 and mid-day, mattins at 10.45, evensong at 3.

On the Sunday after Christmas the celebration of Holy Communion will be at 10.45, mattins at 10.

In consequence of the Defence of the Realm regulations, the church bells cannot be rung during the hours when lights are required to be obscured. We must therefore come to church without the glad summons of the bells on Sunday evenings during the short days of Winter. We shall miss the Christmas and New Year's ringing at night, but we must not forget their Christmas message of peace and goodwill to all men.

In accordance with what was done on the first Sundays of the year in 1915 and 1916, it is proposed by the Archbishops of Canterbury and York that in all cathedrals and parish churches on Sunday, Dec. 31st, special prayer should be offered in connection with the war, and thankful recognition made of the devotion which has been shown by the manhood and womanhood of the country.

Collections and offertory alms on that day will be given to the joint fund of the British Red Cross Society and the order of S. John of Jerusalem in England.

The Archbishops have communicated to the authorities of other religious denominations the proposal they are making for the observance of Sunday, December 31st, in this way, and hope that the whole nation may again be moved at a solemn hour to a joint act of prayer, of thanksgiving and of resolve.

BIBLE SOCIETY.—At the meeting held on October 20th, £1 0s. 6d. was collected, Subscriptions £6 6s. 1d., Miss Upton's box £1 2s. 5d. After deducting expenses, this provided a net sum of £8 for the Society, which is an increase on last year's contribution.

FOREIGN MISSIONS S.P.G.—On Friday, November 17th, Mr. B. C. Perry, formerly head of the college at Sarawak, gave a very interesting lecture on Borneo. This was the first Mission undertaken by the Society beyond the limits of the empire, and he described very vividly the tremendous contrast between the Dyak converts and those who are still uninfluenced by Christian teaching, and practise head-taking, piracy, consultations of spirits, and use of bird-omens before every action. After his lecture many excellent lantern slides were shown in illustration of the subject. The collection was 10s. 4d.

On December 3rd, Advent Sunday, collections will be made for Foreign Missions. The eve of S. Andrew's day, November 29th, was observed as a day of Intercession for Foreign Missions.

THE WAR.—The following have been called up for service during the last month. Sidney Taylor, James Stanley, Sidney Hoyles, George Wilkinson.

The names of 33 of our boys who are now serving abroad have been supplied to the office of the *Nottingham Guardian* Shilling Fund for Christmas Comforts for the troops and it is hoped that they will all receive a Christmas present from the Fund in good time. The Rector, who has guaranteed a contribution of £5 to the fund, will be glad to receive and forward any sums which may be entrusted to him from those who have not sent direct to the *Nottingham Guardian* fund.

The following letter has been received from the Rev. J. P. Hales, Rector of Colgrave, who is now serving as a Chaplain to H.M. Forces :—

France, Sept. 5th, 1916.

On behalf of the men who have gone out from the Diocese of Southwell to do their duty in this great war, I ask your constant prayers. It is impossible for anyone at home fully to realize the strength that it is to men to know that they are being prayed for. So do not fail them. Pray, not so much that we may be protected, as that we may serve faithfully.

J. P. HALES, Chaplain.

The Choral Society announces a Concert to be held on Thursday, Dec. 14th, when "The Messiah" will be performed. The proceeds of the Concert will be given to the British Red Cross Society.

The Temperance Society's Meeting is arranged for Tuesday, Dec. 5th, at 7 p.m. Other meetings will be arranged for January.

The following list is a Summary of amounts received by Collections in Church, Contributions, &c., and expended during the year ending Easter, 1916 :—

| | £ | s. | d. |
|---|----|----|----|
| Church Expenses (Churchwardens' Accounts) .. | 86 | 0 | 6 |
| Alms to Sick and Poor | 8 | 0 | 0 |
| Diocesan Missionary Studentship, Ascension Day, 1915 .. | 1 | 1 | 9 |
| Foreign Missions (S.P.G.) | 19 | 12 | 10 |
| East London Mission to Jews, Good Friday, 1916 .. | 1 | 1 | 4 |
| Hospitals, January 30th, 1916 | 9 | 0 | 0 |
| Diocesan Sunday Fund, 1915 | 10 | 0 | 0 |
| Clothing Club Subscriptions | 4 | 2 | 0 |
| Coal Club Subscriptions | 13 | 1 | 6 |
| Sunday School | 9 | 3 | 7 |
| Church Building Society | 15 | 8 | |
| Church Defence Association | 18 | 0 | |
| Waifs and Strays, Children's Lenten Collection .. | 1 | 0 | 0 |
| Red Cross and Ambulance Society, Oct. 1915, Jan. 1916 | 10 | 16 | 9 |
| Church Restoration, Collections in Church .. | 26 | 16 | 0 |

£ 201 9 11

LIGHTING-UP TIMES for December half-an-hour after sun-set, corrected for East Bridgford.

Dec. 2nd, 4.20; 9th, 4.16 (Full Moon); 17th, 4.15; 24th, 4.17 (New Moon); 31st, 4.24.

Lighted Windows must be obscured half an hour after these times.

EXTRACTS FROM PARISH REGISTERS.

BAPTISM.

Oct. 29th. Edith Ellen, daughter of Tom and Maria Thraves.

MARRIAGE.

Sept. 18th. At Ab Kettleby, Leicester. William Lawrence and Dinah Taylor.

BURIAL.

Nov. 27th. Maud Mary Walker, aged 57 years.

Time Table for East Bridgford of Trains to and from Nottingham, for December, 1916

| Leave | | Arrive Nottingham | | Leave Nottingham | | Arrive | |
|----------------------|-----------------------------|---------------------|-------|---------------------------|--------------------------|----------|----------|
| Bingham. | Lowdham. | G.N.R. Victoria. | M.R. | G.N.R. Victoria. | M.R. | Bingham. | Lowdham. |
| — | 6.58 | — | 7.18 | 5.25 | — | 5.48 | — |
| 7.30 | — | 7.54 | — | — | 6.0 | — | 6.19 |
| — | 7.46 | — | 8.5 | — | 6.28 | — | 6.47 |
| 8.20 | — | 8.45 | — | 7.15 | — | 7.38 | — |
| — | 8.25 | — | 8.45 | — | 7.20 | — | 7.39 |
| — | 8.59 | — | 9.20 | *8.10 | — | 8.34 | — |
| 9.4 | — | 9.28 | — | — | 8.32 | — | 8.51 |
| *9.43 | — | 10.6 | — | 9.25 | — | 9.48 | — |
| 9.51 | — | 10.12 | — | *10.25 | — | 10.47 | — |
| — | 9.56 | — | 10.22 | — | 11.25 | — | 11.46 |
| 11.59 | — | 12.23 | — | 11.50 | — | 12.13 | — |
| — | 1.35 <i>except Sat.</i> | — | 1.55 | — | 12.45 <i>except Sat.</i> | — | 1.3 |
| *1.40 | — | 2.4 | — | — | 1.5 | — | 1.24 |
| 2.1 | — | 2.25 | — | * 1.50 | — | 2.13 | — |
| — | 2.4 | — | 2.27 | — | 2.0 | — | 2.18 |
| — | 2.27 | — | 2.47 | 2.8 | — | 2.26 | — |
| — | 3.25 <i>Fridays</i> | — | 3.40 | 2.43 | — | 3.6 | — |
| *3.30 | — | 3.54 | — | 4.12 <i>Saturdays</i> | — | 4.33 | — |
| — | 4.22 | — | 4.40 | — | 4.40 | — | 4.59 |
| — | 4.48 | — | 5.10 | * 5.0 | — | 5.23 | — |
| 4.57 | — | 5.21 | — | — | 6.10 | — | 6.29 |
| 5.7 <i>Saturdays</i> | — | 5.30 | — | 6.15 | — | 6.38 | — |
| — | 6.36 | — | 6.55 | — | 6.43 | — | 7.4 |
| 6.44 | — | 7.8 | — | — | 7.50 | — | 8.10 |
| — | 7.51 | — | — | 7.40 | — | 8.6 | — |
| *9.2 | — | 9.26 | — | 8.47 | — | 9.13 | — |
| 9.10 | — | 9.34 | — | — | 9.20 | — | 9.39 |
| — | 9.45 <i>Saturday</i> | — | 10.5 | 9.55 | — | 10.19 | — |
| — | 10.5 <i>except Saturday</i> | — | 10.25 | 11.0 <i>Wed. and Sat.</i> | — | 11.24 | — |
| — | 10.15 <i>Saturday</i> | — | 10.35 | — | 11.20 <i>Saturday.</i> | — | 11.42 |

SUNDAYS.

| | | | | | | | |
|------|-------|------|------|-------|-------|-------|-------|
| — | 12.41 | — | 1.0 | — | 10.10 | — | 10.29 |
| 3.3 | — | 3.27 | — | 11.40 | — | 12.4 | — |
| 4.55 | — | 5.18 | — | 2.10 | — | 2.33 | — |
| — | 6.48 | — | 7.10 | 6.3 | — | 6.28 | — |
| 8.35 | — | 9.0 | — | — | 8.10 | — | 8.29 |
| — | — | — | — | 9.58 | — | 10.20 | — |

*Newark trains.

N.B.— All the G.N.R trains stop at London Road (High Level Station) as well as at the Victoria Station