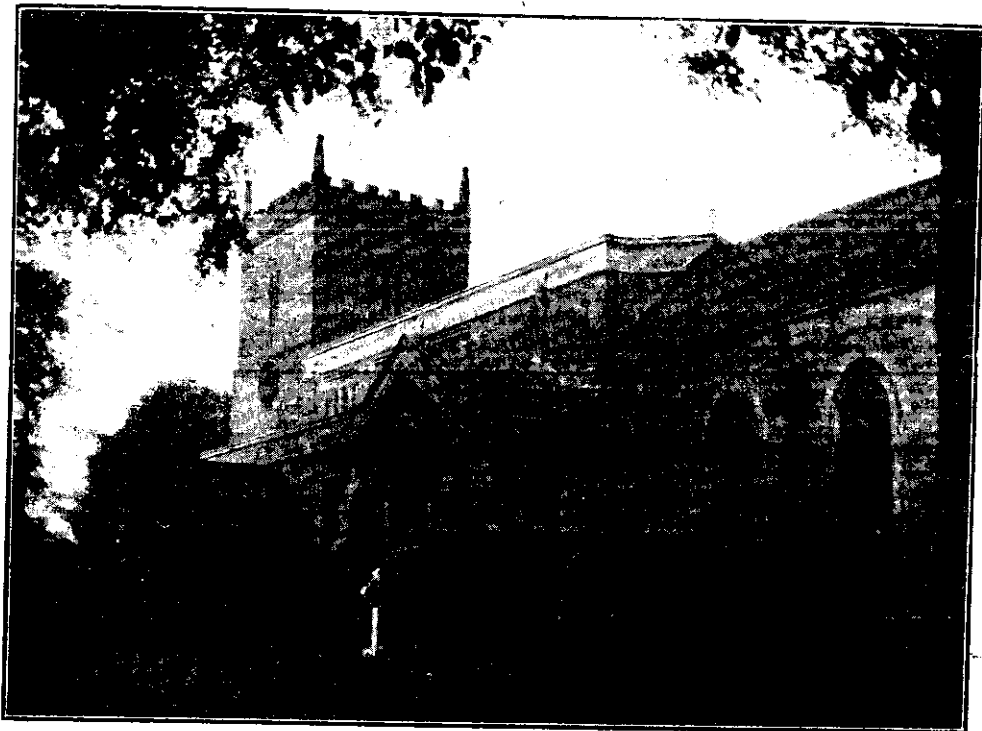


EAST BRIDGFORD MAGAZINE.



St. Peter's Church, East Bridgford.

Services.

HOLY COMMUNION:—

On all SUNDAYS (except last in Month) and HOLY DAYS at 8 a.m.
and after Morning Prayer on the First Sunday in the Month.

On the last Sunday in the Month : Matins at 10 ; Choral Eucharist 10.45.

MORNING AND EVENING PRAYER:—

Sundays at 10.45, and 6 p.m.

Weekdays, Wednesday and Friday at 10 and 6.30 p.m. daily

HOLY BAPTISM:—

Second Sunday in month at 3, or at other Services on due notice.

CHURCHING OF WOMEN:—

Wednesday and Friday at 10, or before any Service on due notice.

SUNDAY SCHOOL AND CATECHISM:—

At 10 a.m. in the National School. Catechism in Church at 2.30.

1917. We enter a New Year, and the nineteenth volume of the East Bridgford Magazine, and we offer our readers our sincere good wishes and greetings. The War cloud still hangs over us, but we trust that the solemn services with which the close of 1916 was marked will help to strengthen us in reliance upon Almighty God. Let us endeavour to show this by increased attendance at and use of the opportunities we have of public worship and prayer. Let us make ourselves as a nation, more worthy of His Fatherly love. "Righteousness exalteth a nation"; let this verse from Proverbs xiv. 34, be our motto for the new year. We have all confidence in those to whom is entrusted the Government of our country, in the leaders of our Navy and Army, in the bond of union between ourselves and our Allies, in the devotion to duty of our men at the front; and it remains for us at home to do our part in strengthening the moral and religious tone of England, and to bear cheerfully and bravely whatever tasks, whatever restrictions may be laid upon us, in order that the Peace of God may come to us.

NOTES FOR 1917.

Ash Wednesday—Feb. 21st.

Easter Day—April 8th.

Whit-Sunday—May 27th.

Feast Sunday—June 24th.

Advent Sunday—Dec. 2nd.

There will be four Sundays after Epiphany, and twenty-five after Trinity.

THE WAR SAVINGS ASSOCIATION which was formed last August for East Bridgford has gone on steadily, and has afforded an opportunity for the accumulation of small savings to a good many persons for investment in the National War Loan. We hope others will be encouraged to do the same, and will try to understand the patriotic value of such savings, and how it is just doing one's bit to help the Nation to carry through. Of course we all know things are much dearer now. It costs more to live than it did last year. But not all are worse off in this respect; some are earning more, and if our little lot of money can do anything to help the soldiers and sailors against the enemy, should we not be glad for them to have it?

Each War Savings' Certificate costs 15/6, and gradually increases in value, until at the end of five years it is worth 20/-. The money invested is not locked up, but can always be got back at any time from the Post Office if required for a sudden emergency. Thus it is not only a good and safe investment, but also a convenient one.

Any sum in sixpences may be paid in to the Treasurer of the Association, Mr. A. Mason, at his house, Leigh Bank, on Saturday evenings from 6 p.m. to 7 p.m.

Up to the present time 146 certificates have been purchased by the association. An affiliated association has also been formed at the School where children can bring any sum from one penny upwards on Monday mornings, by which 31 certificates have already been purchased; so that the total amount of War Savings through these associations in our village is now over £137.

The Inspector of Religious instruction, Rev. F. J. Ross, visited the school on Monday, Dec. 4th, and has made the following general report of his inspection, at which 107 children were present.

"The general tone and character of this school is very good.

Several of the Infants were very bright and intelligent but their general knowledge both of the Old and New Testament was distinctly weak. The repetition was well known and nicely said.

In all the other Divisions the syllabus offered was well known and the children showed considerable intelligence in answering. Their keenness and interest testified how the teachers must have taken great pains with their instruction."

F. J. Ross,

Diocesan Inspector.

The Rector's annual prizes for Religious Knowledge were awarded to the following children:—

Division I.—Sybil Wilkinson, Alec Fletcher.

II.—Ellen Upton, Lily Lodder.

III.—Harold Pailing, Dorothy Waterfield.

Infants.—Percy Crossland, Constance Price.

The School holidays for Christmas are from Dec. 22nd to Jan. 8th, when the school re-opens.

Miss J. M. Sudbury who has been in charge of the Infants' Class for nearly a year, has resigned her post of Assistant Teacher. She has during that time shown a very attentive interest in the children under her care.

THE EAST BRIDGFORD CHORAL SOCIETY gave a performance of Handel's "Messiah" at the Temperance Hall, on Thursday, Dec. 14th. The soloists

were Miss Dorothy Wilson, Soprano ; Miss Gladys Searson, Contralto ; Mr. George Lawton, Tenor ; Mr. Foster Richardson, Bass. The Piano and Organ accompanists were Miss Sharp and Mr. C. Doncaster. The addition of the Trumpet, by Mr. W. Hames, in the last solo and chorus of "The Messiah" was very effective, and the whole performance gave great satisfaction to a full audience. The Conductor of the society is Mr. G. C. A. Austin.

THE TOTAL ABSTINENCE SOCIETY has arranged its monthly meetings, and has provided the following speakers ;—Jan 10th, Rev. G. Wilson, Nottingham ; Feb. 6th, Rev. Harry Needham, Nottingham ; March 6th, Rev. A. Parkin, Nottingham.

CHRISTMAS GIFT.—Mr. C. B. Carryer, of Leicester, father of the aviator whose sad death occurred in this neighbourhood on August 18th last, has sent to the Rector 25lbs. of tea for distribution, as a recognition of the sympathy shown by the inhabitants of East Bridgford to his son.

Railway regulations.—It is not possible at this date to give a time-table of trains from Bingham and Lowdham ; but the announcement has been made that there will be fewer trains running, and that passenger fares will be increased, after Jan. 1st.

GIFTS TO SOLDIERS.—The Rector has received and forwarded to the Nottingham Guardian Comforts Fund, for soldiers serving abroad, the following sums ;—Rev. A. D. Hill £1, Mrs Hill £1, Mrs H. Millward £1, Mr Turner 10/-, Mr Gibbons 2/-, Mr Goldston 2/6, Mr C. Millington 2/6, Mr Dent 3/-, anon 4/-, total £5 5s. Other contributions have been sent direct at various times, and we hope that all our lads at the front will have received a gift from the fund.

HOSPITAL SUNDAY is fixed for Sunday, Jan. 28th, when collections will be made for Nottingham Hospitals.

EXTRACTS FROM PARISH REGISTERS.

BAPTISM.

Dec. 10th. Sarah Elizabeth, daughter of Arthur and Maria Euerby.

BURIAL.

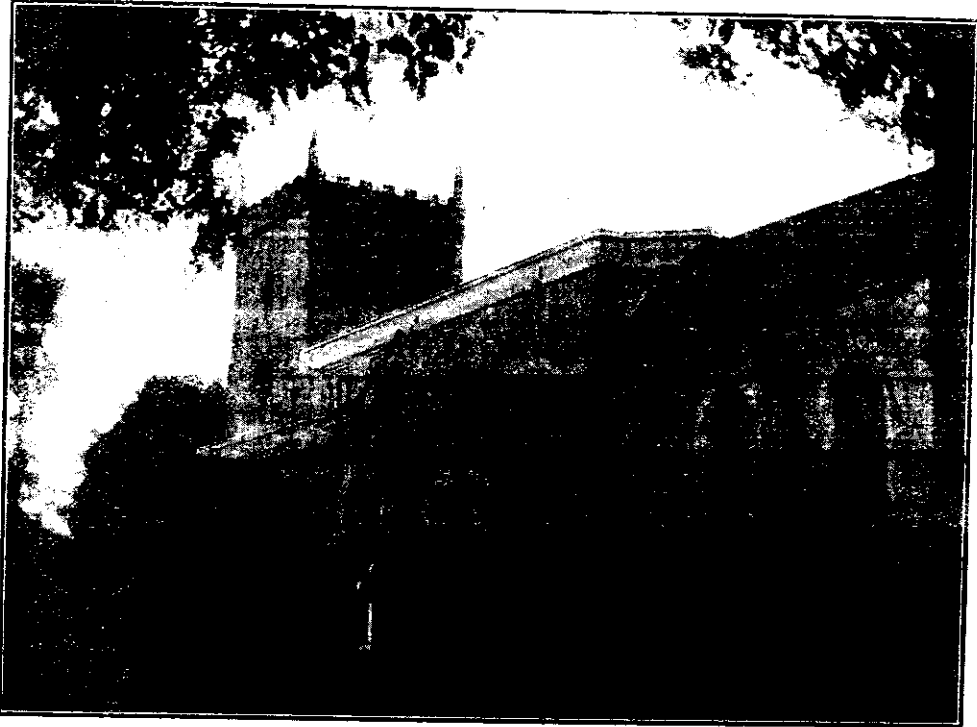
Dec. 15th. Mary Curris, aged 88 years.

LIGHTING-UP TIMES for January half-an-hour after sun-set, Greenwich Time corrected for East Bridgford.

Jan. 8th, 4.34 (Full Moon) ; 16th, 4.46 ; 23rd, 4.59 (New Moon) ; 30th, 5.12.

Lighted Windows must be obscured half an hour after these times.

EAST BRIDGFORD MAGAZINE.



St. Peter's Church, East Bridgford

Services.

HOLY COMMUNION:—

On all SUNDAYS (except last in Month) and HOLY DAYS at 8 a.m. and after Morning Prayer on the First Sunday in the Month.

On the last Sunday in the Month: Matins at 10; Choral Eucharist 10.45.

MORNING AND EVENING PRAYER:—

Sundays at 10.45, and 6 p.m.

Weekdays, Wednesday and Friday at 10 and 6.30 p.m. daily

HOLY BAPTISM:—

Second Sunday in month at 3, or at other Services on due notice.

CHURCHING OF WOMEN:—

Wednesday and Friday at 10, or before any Service on due notice.

SUNDAY SCHOOL AND CATECHISM:—

At 10 a.m. in the National School. Catechism in Church at 2.30.

On December 31st, the last Sunday in 1916, a special service of Prayer and Thanksgiving for the year that was closing in War-time, was used in the evening. Collections at all the services in church were made on behalf of the Joint Fund of the British Red Cross and St. John's Ambulance Societies, and the sum of £5 6s. 4d. was sent up to the headquarters at 83, Pall Mall, London.

ASH WEDNESDAY the first day of Lent is on February 21st. There will be a celebration of Holy Communion at 8, and services at 11 a.m. and 7 p.m. During Lent, a short evening service will be held on Wednesdays at 7 p.m.

A CONFIRMATION will be held at East Bridgford Church on Tuesday, April 3rd, by the Bishop of Southwell. The Rector asks that those who desire to be presented for Confirmation will give their names to him *as soon as possible*, in order that arrangements may be made for due instruction.

As we have a confirmation in our own church this year, it is an occasion which should be taken by those who for any reason have missed other opportunities of becoming confirmed members of the Church of England. Much has happened of late to bring before us the great need of God's loving guidance and help. The National Mission has especially set before us the immense value of seeking that guidance and help as members of the Christian body, the Church, to which we belong. Confirmation is a definite step in beginning the life of dependence on God, by humbly asking for His strength and grace, leading on to the fuller life in God's family which centres round the sacrament of Holy Communion.

CHURCH RESTORATION FUND.

Subscriptions towards the debt of £94 13s. 4d., on June 17th, 1916.

	£	s.	d.
Acknowledged November, 1916	35	1	9
Sales	13	0	0
Mr. W. Gell	5	0	0
Anna	5	0	0
Christmas Offerings	8	8	4
Mr. E. Coste	1	0	0
The Misses Poste	1	0	0
B.M.	5	0	0
Rev. E. B. Hill	3	3	0
Church Box, November—January	11	4	0

Total January 25th, 1917 £ 51 12 5

The honour of D.S.O. has been conferred on Major (temporary Lieut.-Colonel) Herbert Milward Milward, Notts and Derby Regt. He served in the Boer War with the Newark Militia, and passed into the Line fifteen years ago.

The *Nottingham Guardian* Fund for Comforts for the Soldiers was closed about Christmas time, having reached a total of £1764 8s. 10d. Parcels were addressed to all our Lads serving abroad, and we hope have reached their destination. Many nice letters of thanks have been received.

A donation from members of the Choral Society for the Fund, of £1 1s. should have been acknowledged in last month's Magazine, under the total sent in through the Rector.

THE CHORAL SOCIETY is now able to announce the amount of proceeds of the Concert given on December 14th last, by which they were able to send £3 3s. 0d. to the British Red Cross Society. Members of the Society on Christmas Eve sang carols in the village, and made a collection of £4 17s. for the Fund of the National Institute for the Blind for the relief of Blinded Soldiers.

THE TOTAL ABSTINENCE SOCIETY's Meeting on February 6th, will be addressed by Rev. H. Needham, of Nottingham.

The Children of the Sunday School and Catechism were entertained at Tea on Tuesday, January 2nd, when Prizes were awarded and an exhibition of Lantern slides was given. Enno Raynor, Leonard Upton, Mabel Pacey and Dorothy Pacey, were specially commended for regular attendance. The attendance of children during the past year has been sadly hindered by the prevalence of measles and other sicknesses.

BELGIAN REFUGEES FUND.—The Committee has passed the year's accounts, submitted by the Treasurer, Mr. J. W. Woodsend, which have been posted on the Church and Chapel doors. The following is a summary.

Cash in hand, Jan. 31st, 1916.....	£	s.	d.		£	s.	d.
Subscriptions.....	25	3	6		90	0	0
	86	3	2		12	6	0
	94	6	8	Maintenance	5	15	0
	94	6	8	Printing	10	0	0
	94	6	8	Coal	3	14	2
	94	6	8	Rent	1	5	0
	94	6	8	Repairs ..	1	5	0
	94	6	8	Cash in hand, December 31st, 1916	1	5	0
	94	6	8		111	6	8

The task we have undertaken of giving hospitality to homeless Belgians, still rests upon us. Subscriptions will be gladly received by the Treasurer or members of the Committee.

By the death of Mr. Charles Clough on January 23rd, East Bridgford has lost one of its oldest and most highly respected inhabitants. He was born on April 7th, 1836, in the house in which he died, where his father had conducted a school for boys. On his father's retirement he carried on the work successfully, and the school became well-known in the county. He spent his life unostentatiously trying to do good, and his kindly visits to his sick neighbours are known to many of us. He retired from active work about 15 years ago, and with the exception of two or three years spent at St. Annes-on-Sea, he has lived all his life in East Bridgford.

The death occurred on Dec. 18th, at Welshpool, of Mr. George Albert Hutchins, aged 75, and that of his wife on the following day. He was the youngest son of Rev. R. W. Hutchins, a former Rector of East Bridgford. He was educated at Magdalen College, Oxford, and served for some time in India. He was a member of the Institute of Civil Engineers, and County Surveyor for Montgomeryshire.

The death is announced, on Jan. 5th, of Edward Heathcote, eldest son of Rowland Heathcote Hacker, Esq., of the Old Hall, East Bridgford. He lived at Freshwater, Isle of Wight, and was 86 years of age.

The Church Bells will be rung for the 6 p.m. Sunday evening service on and after February 11th.

EXTRACTS FROM PARISH REGISTERS.

BAPTISM.

Dec. 24th. Edna, daughter of George and Sarah Jane Ellis.

BURIALS.

Jan. 23rd. Edgar Blagg, aged 18 years.

„ 26th. Charles Clough, aged 80 years.

LIGHTING-UP TIMES for February half-an-hour after sun-set, Greenwich Time corrected for East Bridgford.

Feb. 7th, 5.24 (Full Moon); 15th, 5.41; 21st, 5.53 (New Moon); 28th, 6.6.

Lighted Windows must be obscured half an hour after these times.

Time Table for East Bridgford of Trains to and from Nottingham, for February, 1917.

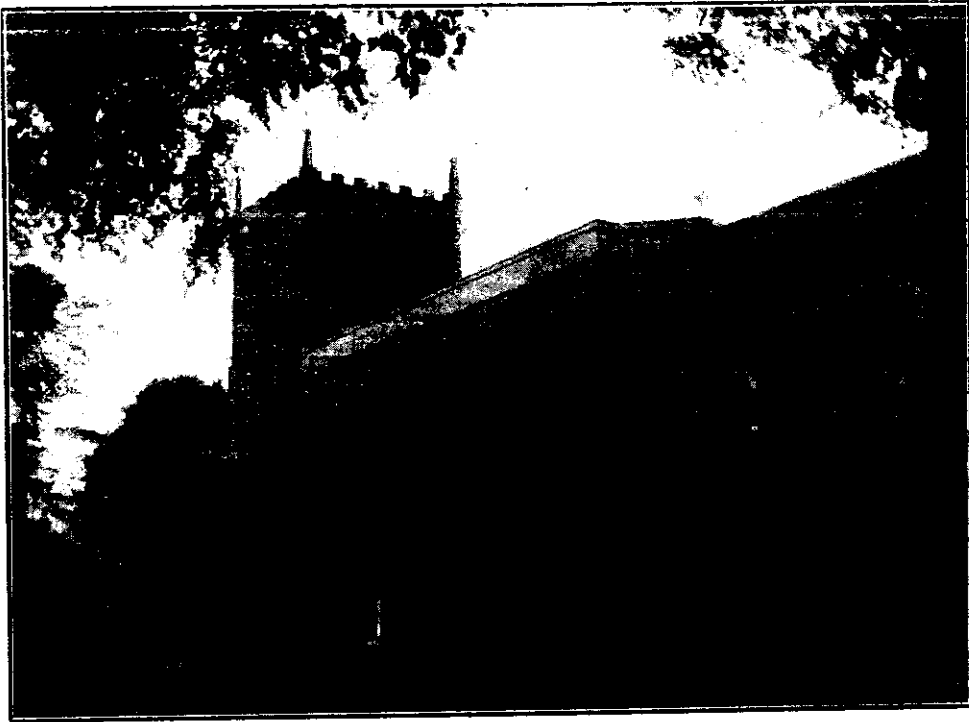
Leave		Arrive Nottingham		Leave Nottingham.		Arrive	
Bingham.	Lowdham.	G.N.R.	M.R.	G.N.R.	M.R.	Bingham.	Lowdham.
		Victoria.		Victoria			
7.30	—	7.54	—	6.0	—	6.23	—
—	7.46	—	8.5	—	7.20	—	7.39
8.20	—	8.45	—	7.30	—	7.53	—
—	8.30	—	8.50	—	9.5	—	9.24
*9.4	—	9.28	—	9.40	—	10.3	—
9.56	—	10.17	—	—	11.25	—	11.46
—	10.20	—	10.40	11.50	—	12.13	—
11.59	—	12.23	—	—	—	—	—
2.1	—	2.25	—	—	2.5	—	2.24
—	2.4	—	2.27	2.15	—	2.38	—
—	4.10	—	4.30	—	4.40	—	4.59
4.57	—	5.21	—	4.55	—	5.18	—
—	6.36	—	6.55	*5.40	—	6.3	—
6.44	—	7.8	—	6.15	—	6.38	—
8.28	—	8.53	—	—	6.40	—	6.58
*9.2	—	9.26	—	7.20	—	7.46	—
—	10.15	—	10.35	8.47	—	9.13	—
—	—	—	—	—	8.50	—	9.9
—	—	—	—	9.40	—	10.4	—
SUNDAYS.							
—	12.40	—	1.0	—	10.10	—	10.29
3.3	—	3.27	—	2.10	—	2.33	—
—	6.48	—	7.10	—	8.10	—	8.29
8.35	—	9.0	—	9.0	—	9.23	—

*Newark trains.

N.B.— All the G.N.R. trains stop at London Road (High Level Station) as well as at the Victoria Station



EAST BRIDGFORD MAGAZINE.



St. Peter's Church, East Bridgford

Services.

HOLY COMMUNION:—

On all SUNDAYS (except last in Month) and HOLY DAYS at 8 a.m.
and after Morning Prayer on the First Sunday in the Month.
On the last Sunday in the Month: Matins at 10; Choral Eucharist 10.45.

MORNING AND EVENING PRAYER:—

Sundays at 10.45, and 6 p.m.
Weekdays, Wednesday and Friday at 10 and 6.30 p.m. daily

HOLY BAPTISM:—

Second Sunday in month at 3, or at other Services on due notice.

CHURCHING OF WOMEN:—

Wednesday and Friday at 10, or before any Service on due notice.

SUNDAY SCHOOL AND CATECHISM:—

At 10 a.m. in the National School. Catechism in Church at 2.30.

VOLUNTARY RATIONING.—The immense importance of voluntarily observing the restrictions asked for by the Food Controller cannot be too strongly urged. He puts the nation on its honour to save food at the present time, and tells us exactly how it can be done most usefully. A copy of his appeal is enclosed with this month's Magazine.

Even though we may not all understand the necessity which has brought about the appeal for voluntary rationing, yet surely this is no time for arguing. Let us do loyally what is asked of us, in confidence that our foreseeing leaders have fully thought out the matter. This should be enough for us. We may be sure it is recognised for example that some households are already not able to afford the full allowance of meat, and that it is therefore difficult to reduce the bread allowance. We may be sure it is not intended to deprive children of necessary food, or workers of enough nutrition.

We are passing through the season of Lent, the time when our Church always reminds us silently but earnestly of the importance of self-denial and self-discipline.

Mr. Lloyd George in the House of Commons said the other day:—

"You cannot have absolute equality of sacrifice in a war. That is impossible. But you can have equal readiness to sacrifice from all. . . . Let the nation as a whole place its comforts, its luxuries, its indulgences, its elegances, on a national altar, consecrated by such sacrifices as these men have made. Let us proclaim during the war a *National Lent*. The nation will be better and stronger for it, mentally and morally as well as physically. It will strengthen its fibre, it will ennoble its spirit. Without it we shall not get the full benefit of this struggle. . . . Unless the nation as a whole shoulders part of the burden of victory it will not profit by the triumph, for it is not what a nation gains, it is what a nation gives that makes it great."

Put this into practice by accepting the **FOOD CONTROLLER'S RESTRICTIONS** and ration yourself and family in Bread, Meat and Sugar each week as follows:—

Bread	4lbs.
(Or its equivalent in Flour, 3lbs., for Bread making.)				
Meat	2½lbs.
(Including Bacon, Ham, Sausages, Game, Rabbits, Poultry and Tinned Meat.)				
Sugar	¾lb.

THE Hospital Sunday Collections in Church, on January 28th, amounted to £11 2s. Od. of which £9 was sent to the General Hospital, £1 1s. to the Children's Hospital and £1 1s. to the Women's Hospital.

ON Ash Wednesday the alms, 5s. 2d., were given to Southwell House, Nottingham, which is doing a very useful work.

THE Bishop of Southwell will hold a Confirmation at East Bridgford Church on Tuesday, April 3rd, at 2.30 p.m. Parents and Godparents of those who are to be confirmed should endeavour if possible to be present; and it is surely right for all who can do so, that they should be present to unite their prayers with those of the Bishop on behalf of Christ's Soldiers and Servants who are being armed for the fight at this service.

ON March 25th, 5th Sunday in Lent and also the Annunciation of the B.V. Mary, Holy Communion (Choral) will be celebrated at 10.45, Matins being at 10. On Easter Day, Holy Communion will be celebrated at 7 a.m., 8 a.m. (Choral), and at midday.

THE Easter Vestry will be held on Tuesday in Easter week, April 10th, at 7 p.m. in the School.

Immediately after the Vestry meeting for official business, the Church meeting will be held for the election of representative to the conference, for the election of five members of the Church Council and for other important church business. Those who are of the status of Communicant, and whose names have not already been added to the electoral roll should make a point of attending.

NATIONAL EGG COLLECTION for the wounded. During 1916 there have been collected in East Bridgford 3,957 eggs. This is the highest total in the V.A.D. Notts 70 area, which has contributed a total of 11,627. Kneeton stand third with 2,095, a most creditable amount.

Miss Sharp is the collector for our village, and she hopes the same high rate of egg contributions will be maintained. She would be glad to receive contributions in money from those who cannot provide eggs.

We are sorry to record that Colonel H. M. Milward, whose D.S.O. was mentioned in the last Magazine, now appears in the list of wounded.

CHURCH RESTORATION FUND.

Subscriptions towards the debt of £94 13s. 8d., on June 12th, 1916.

	£	s.	d.
Acknowledged, February 1917
Mr. F. Clegg (British Columbia)	51 12 5
Mr. C. Allwood	3 0 0
Church Box, February	2 0 0
	3 1

Total February 27th, 1917 £ 53 18 6

We ought to be able to make a good effort to clear off this debt on the Church before the end of this year. The Collections on Easter Day, Whit-Sunday and Christmas Day are appropriated to it. If our friends will help us and send contributions, however small, they will be gratefully acknowledged.

EXTRACTS FROM PARISH REGISTERS.

BAPTISM.

Feb. 11th. Annie Enerby, daughter of John William and Sarah Mildred Dickenson.
 „ 20th. Mary, daughter of Thomas and Rebecca Ellis.

MARRIAGES.

Feb. 10th. Borwell William Galtry and Violet Bullock.
 „ „ George Dawson and Mary Elizabeth Goddard.

BURIAL.

Feb. 21st. Emma Richardson, aged 83 years.

LIGHTING-UP TIMES for March, half-an-hour after sun-set, Greenwich-time corrected for East Bridgford.

March 8th, 6.23 (Full Moon); 16th, 6.38; 23rd, 6.50 (New Moon); 30th, 7.1.

Lighted Windows must be obscured half an hour after these times.

Time Table for East Bridgford of Trains to and from Nottingham, for February, 1917.

Bingham.	Leave		Arrive Nottingham		Leave Nottingham.		Arrive	
	Bingham.	Lowdham.	G.N.R. Victoria.	M.R.	G.N.R. Victoria.	M.R.	Bingham.	Lowdham.
7.30	—	—	7.54	—	6.0	—	6.23	—
—	7.46	—	—	8.5	—	7.20	—	7.39
8.20	—	—	8.45	—	7.30	—	7.53	—
—	8.30	—	—	8.50	—	9.5	—	9.24
*9.4	—	—	9.28	—	9.40	—	10.3	—
9.56	—	—	10.17	—	—	11.25	—	11.46
—	10.20	—	—	10.40	11.50	—	12.13	—
11.59	—	—	12.23	—	—	—	—	—
2.1	—	—	2.25	—	—	2.5	—	2.24
—	2.4	—	—	2.27	2.15	—	2.38	—
—	4.10	—	—	4.30	—	4.40	—	4.59
4.57	—	—	5.21	—	4.55	—	5.18	—
—	6.36	—	—	6.55	*5.40	—	6.3	—
6.44	—	—	7.8	—	6.15	—	6.38	—
8.28	—	—	8.53	—	—	6.40	—	6.58
*9.2	—	—	9.26	—	7.50	—	7.40	—
—	10.15	—	—	10.35	8.47	—	9.13	—
—	—	—	—	—	—	8.50	—	9.9
—	—	—	—	—	9.40	—	10.4	—

SUNDAYS.

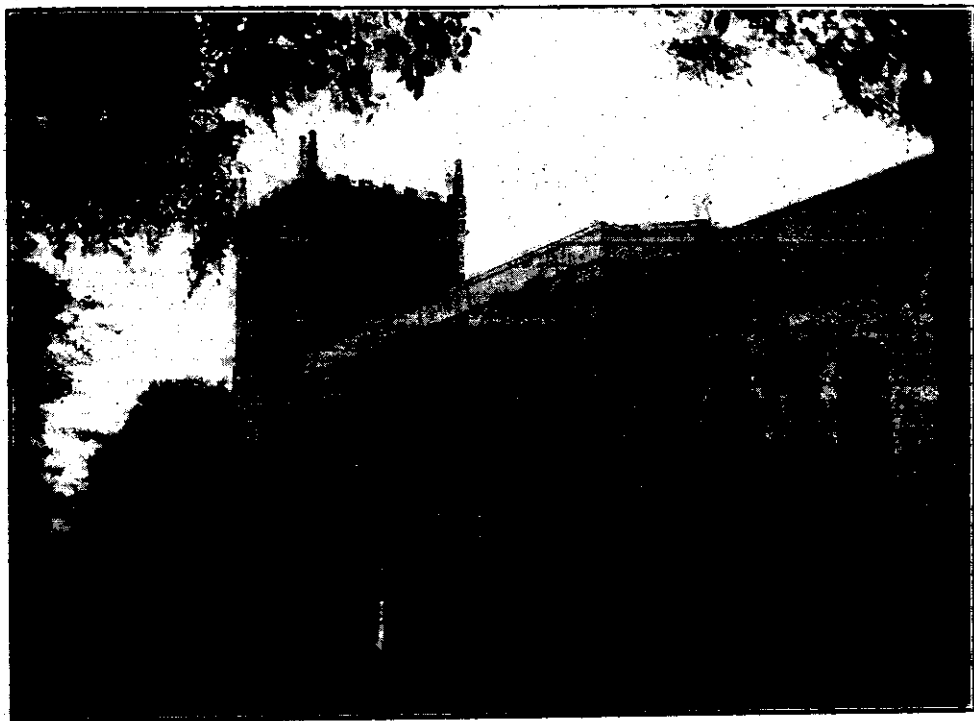
—	12.40	—	1.0	—	10.10	—	10.29
3.3	—	3.27	—	2.10	—	2.33	—
—	6.48	—	7.10	—	8.10	—	8.29
8.35	—	9.0	—	9.0	—	9.23	—

*Newark trains.

N.B.—All the G.N.R trains stop at London Road (High Level Station) as well as at the Victoria Station



EAST BRIDGFORD MAGAZINE.



St. Peter's Church, East Bridgford.

Services.

HOLY COMMUNION:—

On all SUNDAYS (except last in Month) and HOLY DAYS at 8 a.m.
and after Morning Prayer on the First Sunday in the Month.

On the last Sunday in the Month : Matins at 10 ; Choral Eucharist 10.45.

MORNING AND EVENING PRAYER:—

Sundays at 10.45, and 6 p.m.

Weekdays, Wednesday and Friday at 10 and 6.30 p.m. daily

HOLY BAPTISM:—

Second Sunday in month at 3, or at other Services on due notice.

CHURCHING OF WOMEN:—

Wednesday and Friday at 10, or before any Service on due notice.

SUNDAY SCHOOL AND CATECHISM:—

At 10 a.m. in the National School. Catechism in Church at 2.30.

MY DEAR FRIENDS,

It has been a great grief to me that owing to illness I have been unable to be amongst you, and to do my work in the Church and Parish for nearly four weeks. More especially that this has happened during Lent, so that I have had to drop my plans for Lent work and services.

I am glad that I have been able to rely upon our neighbour, the Rev. Dr. J. Barker, for help on Sundays during this time, and that he will continue to give me help until Easter.

THE WAR. We have now reached a crisis in the War when to ensure victory, the heroism of our armies at the front must be backed up by the self-sacrifice and tireless labour of all at home, everyone who is able offering himself for Voluntary National Service, every possible acre being tilled and sown. The work of the present few weeks will decide the harvest of the year, and on the home harvest largely depends the defeat of the German submarine plan. The question of tilling the soil for food on Sunday in the present emergency has been raised, and should have the fullest consideration. I do not think the actual necessity has arisen here in the same degree as in many places where there is greater scarcity of labour, with large areas to be cultivated by steam ploughs in a limited time.

We may, however, listen to the wise guidance of the Archbishop of Canterbury, who, in answer to a letter from Mr. Prothero, President of the Board of Agriculture, has made the following reply:—

“Our inheritance of the English Sunday, with its privilege of abstention from all ordinary work, is a God-given boon of inestimable value, and I desire to maintain and safeguard it in every reasonable way, but occasions may arise when for the wellbeing of the people of our land exceptional obligations are laid upon us.

As Minister of Agriculture you assure us that such an emergency has now arisen, and that the security of the nation's food supply may largely depend upon the labour which can be devoted to the land in the next few weeks. This being so, we are, I think, following the guidance given in the Gospel if in such a case we make a temporary departure from our rule. I have no hesitation in saying that in the need which these weeks present men and women may with a clear conscience do field work on Sundays. Care would, of course, be taken to safeguard from compulsion those who would feel such action on their part to be wrong, or whose health would be seriously endangered by the extra strain.”

To this I should like to add two reminders: (1) The Christian Sunday is a day of rest, in order that we have the time and opportunity for worship. As a Nation we have sadly neglected this duty, and now, if we are deprived of the boon of Sunday rest, we can but own that it is just retribution for Sundays

spent in self-indulgence instead of public worship of God. (2) We must not forget that this is a measure called for in a most serious time of National emergency. It must not be allowed to become a permanent excuse for Sunday work, such as is too often mere fidgety anxiety for personal gain or convenience.

A D.H.

The Editor is sorry not to be able always to bring out the magazine at the beginning of the month. Sometimes the delays of the railway, sometimes other causes have hindered.

THE CONFIRMATION in East Bridgford Church is on Tuesday before Easter, April 3rd, at 2.30 p.m.

THE HOLY COMMUNION will be celebrated on Thursday before Easter, April 5th, at 8 a.m.

GOOD FRIDAY. Services at 8, 11, and 7.30. Alms for Mission in Jerusalem and the East.

EASTER DAY. April 8th. Celebration of Holy Communion at 7, 8 and midday. Offerings for the Church Restoration Fund, for which about £42 more is required.

EASTER VESTRY. Tuesday, April 10th, at 7 p.m., followed by Church Meeting.

It is with very real sorrow that we record the death of Robert Swanwick in his 81st year, on March 19th last; and we desire to offer sympathy to his daughters. Mr. Swanwick was born April 14th, 1836, at Shelford where he lived for more than half his life. For the last thirty years he has lived in East Bridgford. As an earnest and sincere Churchman he was most constant in his attendance at the Services, and took keen interest and delight in everything connected with the church, which he served continuously as an official, having been sidesman first in 1898, and Churchwarden for the past 12 years. A muffled peal was rung in his memory after the Morning Service on the fifth Sunday in Lent, March 25th.

Funds are urgently needed for the supply of food and clothing to the Prisoners of War in Germany, of the Notts and Derby Regiments, over 700 in number. Collections will be made in church for this object on Sunday, April 15th.

During the last month George Crossland and Otto Raynor have been called up for Service.

There are at the present time seven soldiers in the Village who have been sent here to help in agricultural work.

EXTRACTS FROM PARISH REGISTERS.

BURIALS.

March 16th. Kathleen Marie Widdowson, aged 7 months.
 .. 21st. Robert Swanwick, aged 80 years.

LIGHTING-UP TIMES for April, half-an-hour after sun-set, Greenwich-time corrected for East Bridgford.

April 7th. 7.16 (Full Moon); 14th, 7.29; 21st, 7.42 (New Moon); 29th, 7.55.
 Lighted Windows must be obscured half an hour after these times.

Summer-time begins April 8th, the morning of Easter Day.

Time Table for East Bridgford of Trains to and from Nottingham, for April, 1917.

Bingham.	Leave		Arrive Nottingham		Leave Nottingham.		Arrive	
	Bingham.	Lowdham.	G.N.R. Victoria.	M.R.	G.N.R. Victoria.	M.R.	Bingham.	Lowdham.
7.30	—	—	7.54	—	6.0	—	6.23	—
—	7.46	—	—	8.5	—	7.20	—	7.39
8.20	—	—	8.45	—	7.30	—	7.53	—
—	8.30	—	—	8.50	—	9.5	—	9.24
9.25	—	—	9.50	—	9.40	—	10.3	—
—	10.20	—	—	10.40	—	11.25	—	11.46
11.59	—	—	12.23	—	11.50	—	12.13	—
<hr/>								
2.1	—	—	2.25	—	—	2.5	—	2.24
—	2.4	—	—	2.27	2.15	—	2.38	—
—	4.10	—	—	4.30	—	4.40	—	4.59
4.57	—	—	5.21	—	4.55	—	5.18	—
—	6.36	—	—	6.55	6.15	—	6.38	—
6.44	—	—	7.8	—	—	6.40	—	6.58
8.28	—	—	8.53	—	7.10	—	7.46	—
—	10.15	—	—	10.35	8.47	—	9.13	—
<hr/>								
<hr/>								
<hr/>								
—	12.40	—	—	1.0	—	10.10	—	10.29
3.3	—	—	3.27	—	2.10	—	2.33	—
—	6.48	—	—	7.10	—	8.10	—	8.29
8.35	—	—	9.0	—	9.0	—	9.23	—

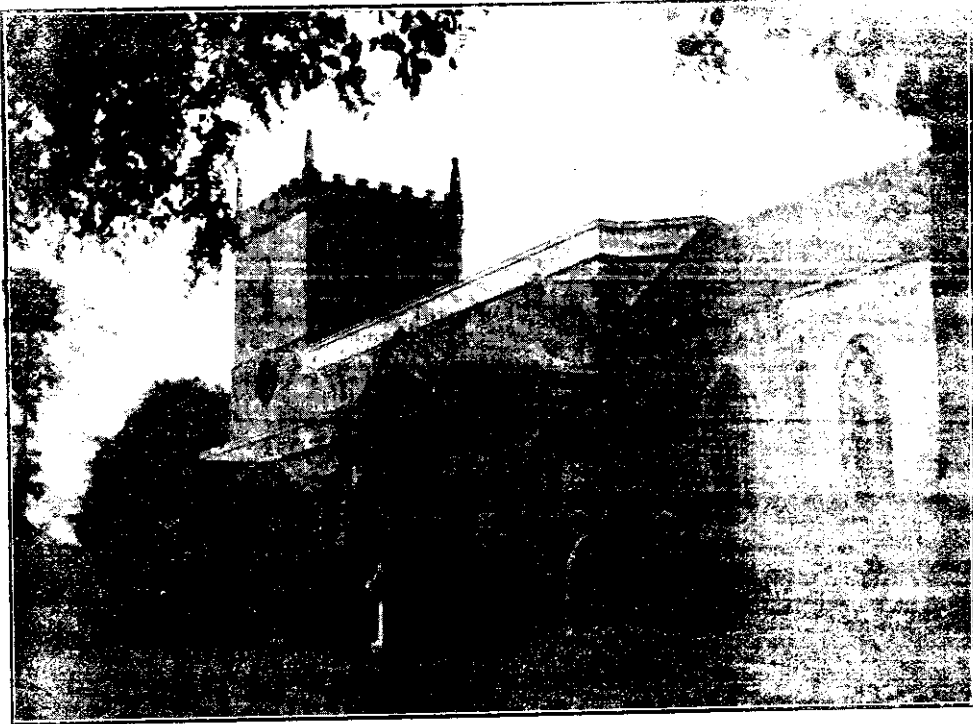
SUNDAYS.

— 12.40 — 1.0 — 10.10 — 10.29
 3.3 — 3.27 — 2.10 — 2.33 —
 — 6.48 — 7.10 — 8.10 — 8.29
 8.35 — 9.0 — 9.0 — 9.23 —

N.B.— All the G.N.R. trains stop at London Road (High Level Station) as well as at the Victoria Station



EAST BRIDGFORD MAGAZINE.



St. Peter's Church, East Bridgford.

Services.

HOLY COMMUNION:—

On all SUNDAYS (except last in Month) and HOLY DAYS at 8 a.m.
and after Morning Prayer on the First Sunday in the Month.

On the last Sunday in the Month: Matins at 10; Choral Eucharist 10.45.

MORNING AND EVENING PRAYER:—

Sundays at 10.45, and 6.30 p.m.

Weekdays, Wednesday and Friday at 10 and 6.30 p.m. daily

HOLY BAPTISM:—

Second Sunday in month at 3, or at other Services on due notice.

CHURCHING OF WOMEN:—

Wednesday and Friday at 10, or before any Service on due notice.

SUNDAY SCHOOL AND CATECHISM:—

At 10 a.m. in the National School. Catechism in Church at 2.30.

GOOD FRIDAY. The alms at the services were given to the Jerusalem and the East Mission Fund, £3 6s. 10d. At this moment the work in Palestine is suspended except for the brave effort of some native workers, the schools are turned into barracks and the hospitals occupied by Turkish soldiers. Heavy expenditure will be needed to re-equip them. At the customary afternoon service at 2, four addresses were given on "The Power of the Cross," by the Rector, who also preached in the evening.

EASTER DAY. The great festival was observed by well attended celebrations of Holy Communion at 7 a.m. and 8 a.m. Choral, and mid-day. The preacher at both the morning and evening services was Rev. Dr. J. Barker, who has been helping the Rector through Lent. During the day, Easter offerings of £9 6s. 6d., were given to the Church Restoration Fund.

On Tuesday in Holy Week, April 3rd, the Bishop of Southwell held a confirmation in East Bridgford Church at 2.30 p.m. There were 20 male and 17 female candidates 37 in all, of whom 18 were from our own Parish.

The weather during April has been for the most part very cold so that garden and land operations are being much hindered by the lateness of the season. For the first fortnight of the month northerly and easterly winds prevailed and there was a sharp frost every night, snow falling on five days.

THE EASTER VESTRY MEETING was held at 7 p.m. on Tuesday, April 10th. The accounts were presented showing expenditure exactly balanced by receipts, but there remained a further sum of £7 9s. 0d., owing for the expense incurred in putting up curtains to obscure the windows of the church under the lighting restrictions. This was passed into the accounts of the ensuing year, but the whole amount was defrayed by subscriptions then received.

The Rector spoke feelingly on the loss which must be felt in the death of Mr. Robert Swanwick who had been churchwarden for the last twelve years.

The churchwardens for the ensuing year were appointed; Mr. J. Turner by the Rector, and Miss Fox by the Vestry. Sidesmen: Messrs. C. Allwood, C. Millington, E. E. Coville, W. R. Sharman, W. Lander and R. D. Shardlow.

After the Vestry Meeting the Parochial Church Meeting of electors, duly summoned by notice, was held. The Rector briefly explained the scheme now drawn up by the Representative Church Council, and accepted by this Diocese, by which the voice and active co-operation of the Laity in the organization of the church may be secured. The church meeting of the parish elects lay representatives to attend the Conference of the Rural Deanery, and that meeting in turn elects the members of the Diocesan Conference. The Diocesan conferences send their representatives to the two Houses of Laymen

in the provinces of Canterbury and York, the members of which constitute the Lay Representative Church Council, meeting at the same time as the Houses of Convocation and Parliament. Mr. W. A. Hodges and Mr. C. Millington were elected as Lay representatives for the parish of East Bridgford.

It was agreed that the Sunday evening service should now be held as formerly at 6.30 p.m. beginning on April 22nd.

**SUMMARY OF CHURCHWARDENS' ACCOUNTS AND CHURCH COLLECTIONS
EASTER, 1917.**

	Receipts.	£	s.	d.		Expenditure.	£	s.	d.
Collections :—					Repaid Churchwardens 1916	5	3	6	
Church Expenses	70	5	5		Church maintenance, viz.				
Ditto 1st Sunday Saints days, etc.	13	0	7		Churchyard	2	10	0	
Subscriptions Easter, 1916	5	5	0		Insurance and fees	6	9	10	
" " 1917	3	1	3		Choir and Organ	12	6	7	
For Church Restoration Fund	23	15	6		Salaries, Organist and Clerk	35	0	0	
" Dio. Church extension Fund (2)	11	5	3		Ringers	0	6	0	
" Missionary Students	11	7			Fuel and Cleaning	14	4	4	
" Missions S.P.G.	4	11	0		Sundries	10	0		
" Jerusalem and East Mission	3	6	10		Alms to Sick and Poor	8	0	0	
" Church Missionary Society	1	11	8		Church Defence Fund			5	0
" Sunday School	4	16	4		Special Collections (as on other side)	70	19	10	
" Hospital Sunday	11	2	0						
" Red Cross and Ambulance (2)	9	14	7						
" Southwell House		5	1						
		£163	8	1			£163	8	1

April 10th, 1917.

SUBSCRIPTIONS are acknowledged from Miss Fox and Mrs. Cartwright £3, Mr. Hodges £7 and Mrs. Milward 10/- towards the Church expenses, and the additional expense of the curtains for the church windows £7 9s. 0d. is thereby defrayed.

THE BAND OF HOPE gave a very successful entertainment on Easter Monday, by which £5 was raised on behalf of the East Bridgford and District Nurse Fund.

SHORT RATIONS. Everybody ought to try to understand the present economic situation of our country and the urgent necessity for less consumption of bread and flour during the months between this and the next harvest.

The lessened number of ships available to bring food to this country, the partial failure of the world's wheat crop, and the depredations of the dastardly submarine all combine to bring about a shortage in wheat and flour, which unless it is faced boldly and sensibly by the people, may bring us near the edge of disaster. We have to feed our Army and Navy as well as ourselves on homegrown crops, or on present stocks. The director of Food economy tells us that if everyone will help in these critical months, if everyone will play the game, there need be no crying for bread.

This is what we are called upon to do. Let everyone resolve therefore to eat 2 ounces of bread a day less than in normal times. It seems a very little thing, it is not a great sacrifice to ask, but if it is done by all there would be no food problems. We heard of cases in Nottingham lately, where women were selling the crusts the children would not eat, to dealers for ½d. a lb., for which they had just paid 3d. a lb. What nice bread-puddings were wasted here! Many people say, why not put us all on compulsory rations, bread

tickets and all? Well, the government knows what it has to do, and instead of the very expensive and aggravating plan of compulsory rations, it makes a first appeal to common sense and patriotism, by asking everyone to make a willing sacrifice. The workers on the land will not fail, we are sure, to do their duty with all their strength, and the house keepers, we hope, will also do their part in watchful economy.

From May 17th, Ascension Day, to May 20th, an endeavour is to be made to help children to understand the seriousness of God's message to the world in these times. The children of to-day are the responsible citizens to-morrow; and of what character will these citizens be to whom we look for the re-construction of England? By careful and suitable teaching children may be helped to realize themselves as God's children, and to understand for themselves that renewal of allegiance, which was set before their parents by the National Mission.

ON ASCENSION DAY the Holy Eucharist will be celebrated at 11 a.m. and evening service held at 7.30.

ON WHITSUNDAY, May 27th, the celebrations will be at 7 and 8, and Choral Eucharist at 10.45. Mattins at 10, Evensong at 6.30. Offerings for the Church Restiration Fund.

EXTRACTS FROM PARISH REGISTERS.

BAPTISMS.

April 8th, Easter Day. Winifred, daughter of Charles and Sarah Hannab Smith.
 " 15th. " Anthony William, son of Charles and Maisie Clara Freestone.
 " 15th. Bernard, son of Foster and Beatrice Ida Thornton.

LIGHTING-UP TIMES for May, half-an-hour after sun-set, Summer time corrected for latitude and longitude of East Bridgford.

May 7th, 9.9 (Full Moon); 14th, 9.17; 21st, 9.31 (New Moon); 28th, 9.42.
 Lighted Windows must be obscured half an hour after these times.

Time Table for East Bridgford of Trains to and from Nottingham, for May, 1917.

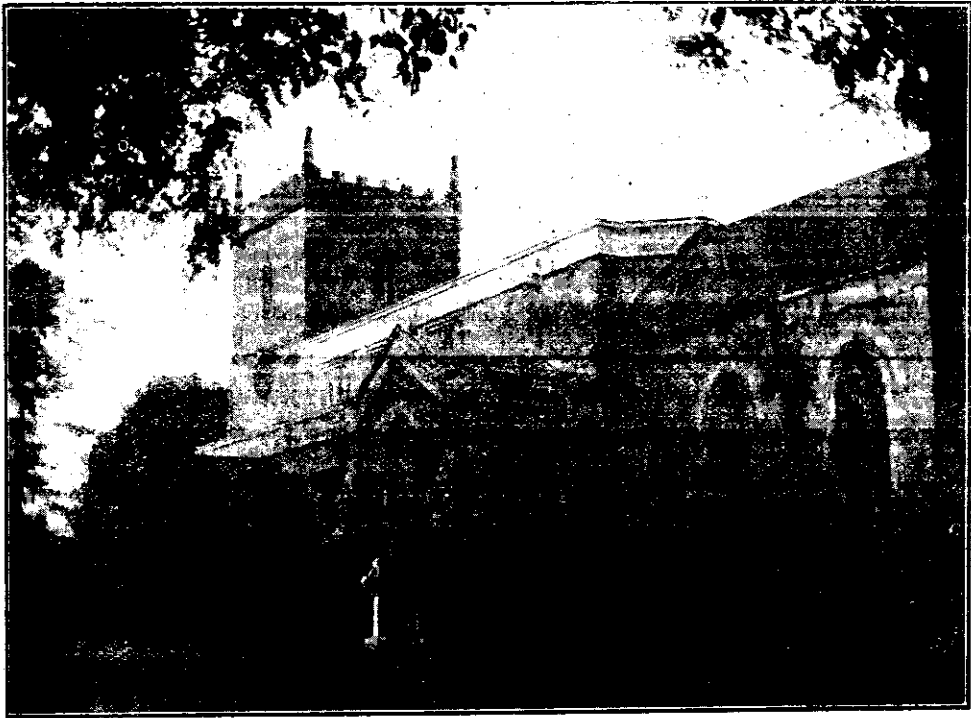
Leave		Arrive Nottingham		Leave Nottingham		Arrive	
Bingham.	Lowdham.	G.N.R. Victoria	M.R.	G.N.R. Victoria.	M.R.	Bingham.	Lowdham.
7.30	—	7.54	—	6.0	—	6.23	—
—	7.46	—	8.5	—	7.20	—	7.39
8.20	—	8.45	—	7.30	—	7.53	—
—	8.30	—	8.50	—	9.5	—	9.24
9.25	—	9.50	—	9.40	—	10.3	—
—	10.20	—	10.40	—	11.25	—	11.46
12.10	—	12.35	—	11.50	—	12.13	—
<hr/>							
2.1	—	2.25	—	—	2.5	—	2.24
—	2.4	—	2.27	2.15	—	2.38	—
—	4.10	—	4.30	—	4.40	—	4.59
4.57	—	5.21	—	4.55	—	5.18	—
—	6.36	—	6.55	6.15	—	6.38	—
6.44	—	7.8	—	—	6.40	—	6.58
8.28	—	8.53	—	7.20	—	7.46	—
—	10.15	—	10.35	8.47	—	9.13	—
—	—	—	—	—	8.50	—	9.9
—	—	—	—	9.40	—	10.4	—

SUNDAYS.

—	12.40	—	1.0	—	10.10	—	10.29
3.3	—	3.27	—	2.10	—	2.33	—
—	6.48	—	7.10	—	8.10	—	8.29
8.35	—	9.0	—	9.0	—	9.23	—

N.B.—All the G.N.R. trains stop at London Road (High Level Station) as well as at the Victoria Station

EAST BRIDGFORD MAGAZINE.



St. Peter's Church, East Bridgford.

Services.

HOLY COMMUNION:—

On all SUNDAYS (except last in Month) and HOLY DAYS at 8 a.m.
and after Morning Prayer on the First Sunday in the Month.

On the last Sunday in the Month: Matins at 10; Choral Eucharist 10.45.

MORNING AND EVENING PRAYER:—

Sundays at 10.45, and 6.30 p.m.

Weekdays, Wednesday and Friday at 10 and 6.30 p.m. daily.

HOLY BAPTISM:—

Second Sunday in month at 3, or at other Services on due notice.

CHURCHING OF WOMEN:—

Wednesday and Friday at 10, or before any Service on due notice.

SUNDAY SCHOOL AND CATECHISM:—

At 10 a.m. in the National School. Catechism in Church at 2.30.

A Proclamation by the King was read in Church on Sunday, May 6th, the day of the King's Accession, and on each of the three following Sundays. He exhorted and charged all people to practise the greatest economy in the use of every species of grain and flour, to reduce the consumption of bread by at least one-fourth of the quantity consumed in ordinary times, and to feel for the wants of others in these times of grave stress and anxiety.

We regret to hear that Charles Atkinson, Notts and Derby, and John Cloxton, R.F.A., have been wounded, but hope they are progressing well.

The sad news of the death of Tom Cheetham, of Newton, in action on May 7th, has been received.

Captain Harold H. Hodges, Monmouthshire Regt., is mentioned in Sir D. Haig's report, of May 24th.

From the very beginning of the National Mission, it was felt that the call to the children, who are growing up to form the nation in the future must not be forgotten. In this diocese it has been made on Ascension Day, May 17th, and the three following days. We need the Children's loyalty in the task of reconstruction. We appeal to their love and sense of worship, and we know they do care for such matters. We desire to make them feel at home in their Heavenly Father's house, and not to be afraid to come in of their own will from time to time to kneel and say a prayer for our country, our soldiers, and ourselves. The services they have attended, and the lessons they have been taught will bear fruit if parents and all who have children under their care will give encouragement. The Nation needs Unity in this and all such efforts.

On April 22nd, a collection was made in Church in aid of the funds for supplying food and clothing to the Prisoners of War in Germany, belonging to the Notts and Derby Regiments, over 700 in number. It is one of our first duties to remember these men of ours in their loneliness and suffering. A cheque for £6 has been forwarded.

DIOCESAN SUNDAY, May 13th.—The Bishop's annual appeal for funds needed to carry on the work of the Church in the diocese was made in our Church, and resulted in the collection of £8 17s. towards the sum of £10 asked for from this parish. Another collection will be devoted to the same purpose later on in the year.

SCHOOL MANAGERS.—A meeting will be held in the school at 6 o'clock on Friday, June 29th, to elect three Managers representing subscribers to the School, to hold office for three years.

FEAST SUNDAY, June 24th.—The Services on this day will be Mattins at 10. Holy Communion at 10.45. Evensong at 6.30. It should be a day when we unite in thanksgiving to Almighty God for his mercies, and in remembrance of our sailors and soldiers and of those whose lives have been laid down already in the service of their country.

A PATRIOTIC FAIR is arranged to be held in Nottingham Market Place on Whit-Monday and Tuesday. An East Bridgford stall has been organized by Dr. and Mrs. Duff, with Mrs. Van Tricht, Mrs. S. Richardson and Mrs. J. S. Wilkinson as helpers, of Children's outfit. The purpose of the Fair is to provide funds for various War organizations, Comforts for troops, Prisoners of War, local Ambulance societies, Lord Robert's memorial workshops and War hospital supply depôts.

War has been declared against the rats and the sparrows. Reverting to the custom that was common enough two centuries ago, a notice has been put out offering 2d. for every rat's tail, ½d. for every old house-sparrow's head and 3d. a dozen for young sparrows. To be brought to Mr. W. Baguley between 6 and 7 p.m. on Tuesdays and Fridays.

There is no doubt that where any creatures become so numerous as to be a pest, the numbers must be thinned, and in the present national emergency it is of great importance for the welfare of the people to stop all causes of waste among the crops. Let us remember at the same time that it is of supreme importance that children should not be trained in methods of cruelty, but be taught the value of consideration and kindness to the lower creatures. Even sparrows have their uses, though a plague of sparrows may have to be energetically dealt with. But it is better not to encourage the children to act as executioners.

CHURCH RESTORATION FUND.

Subscriptions towards the debt remaining on June 12th, 1916, of £94 13s. 8d.

	£	s.	d.
Acknowledged, March 1917	53	18	6
Easter Offering	9	6	6
Mrs. A. Jollands	10	0	0
Mr. R. D. Shardlow	10	0	0
Mr. J. Turner	1	0	0
Church Box, April—May	9	4	0
Whit-Sunday Offerings	7	5	4

Total May 27th, 1917 £ 72 19 8

Mr. R. Jones desires to express his thanks to neighbours and friends for their sympathy with himself and his family in their bereavement.

EXTRACTS FROM PARISH REGISTERS.

MARRIAGE.

April 28th. Robert Goulder and Rebecca Annie Euerby.

BURIALS.

May 2nd. James Wood, aged 77 years.
 " 3rd. Sarah Ann Jones, aged 66 years.
 " 25th. Jane Watson, aged 63 years.

LIGHTING-UP TIMES for June, half-an-hour after sun-set, corrected for at Summer time, East Bridgford.

June 5th, 9.52 (Full Moon); 12th, 9.59; 19th, 10.2 (New Moon); 27th, 10.2.
 Lighted Windows must be obscured half an hour after these times.

Since our longitude is 1 deg. West of Greenwich, our sunset is always 4 minutes later than the sunset time as given in the Almanacks for Greenwich. Also, since our latitude (53 deg. N. lat.) is nearly 2 degrees north of Greenwich, our sunset at the end of June is another 10 minutes later than at Greenwich. In December however, while we gain 4 minutes for longitude, we lose 9 minutes of daylight on account of our latitude or distance north. In the months between these dates our sunset time accordingly varies from 14 minutes later to 5 minutes earlier, than the Greenwich time of sunset. These corrections, as well as that for Summer-time, are applied in the above statement of lighting-up times according to the law.

Time Table for East Bridgford of Trains to and from Nottingham, for May, 1917.

Leave		Arrive Nottingham		Leave Nottingham.		Arrive	
Bingham.	Lowdham.	G.N.R.	M.R.	G.N.R.	M.R.	Bingham.	Lowdham.
7.30	—	7.54	—	6.0	—	6.23	—
—	7.46	—	8.5	—	7.20	—	7.39
8.20	—	8.45	—	7.30	—	7.53	—
—	8.30	—	8.50	—	9.5	—	9.24
9.25	—	9.50	—	9.40	—	10.3	—
—	10.20	—	10.40	—	11.25	—	11.46
12.10	—	12.35	—	11.50	—	12.13	—
<hr/>							
2.1	—	2.25	—	—	2.5	—	2.24
—	2.4	—	2.27	—	—	—	—
—	4.10	—	4.30	2.15	—	2.38	—
4.57	—	5.21	—	—	4.40	—	4.59
—	6.36	—	6.55	4.55	—	5.18	—
6.44	—	7.8	—	6.15	—	6.38	—
8.28	—	8.53	—	—	6.40	—	6.58
—	10.15	—	10.35	7.20	—	7.46	—
<hr/>							
SUNDAYS.							
—	12.40	—	1.0	—	10.10	—	10.29
3.3	—	3.27	—	2.10	—	2.33	—
—	6.48	—	7.10	—	8.10	—	8.29
8.35	—	9.0	—	9.0	—	9.23	—

N. B. — All the G.N.R. trains stop at London Road (High Level Station) as well as at the Victoria Station.

EAST BRIDGFORD MAGAZINE.



St. Peter's Church, East Bridgford.

Services.

HOLY COMMUNION :—

On all SUNDAYS (except last in Month) and HOLY DAYS at 8 a.m.
and after Morning Prayer on the First Sunday in the Month.
On the last Sunday in the Month : Matins at 10 ; Choral Eucharist 10.45.

MORNING AND EVENING PRAYER :—

Sundays at 10.45, and 6.30 p.m.
Weekdays, Wednesday and Friday at 10 and 6.30 p.m. daily.

HOLY BAPTISM :—

Second Sunday in month at 3, or at other Services on due notice.

CHURCHING OF WOMEN :—

Wednesday and Friday at 10, or before any Service on due notice.

SUNDAY SCHOOL AND CATECHISM :—

At 10 a.m. in the National School. Catechism in Church at 2.30.

The Bishop and his companion seem to have travelled on foot along a route which is given as the road to Newark in an old map of that date which is in my possession. It was doubtless the shortest bridle road to Newark at a period when there were not many good roads for travelling. Leaving Nottingham over Carlton Hill it reaches Burton Joyce by the present highway. Here it bends to the river and crosses marshy ground in a straight line for Gunthorpe, crossing the Cocker Beck by "Huntspill bridge." This part is still marked by a track. Thence the road continues along the river side, where the towing path of a later date is now, until Bleasby Ferry is reached, at about 12 miles from Nottingham. This part, from Burton Joyce to Bleasby or Hazelford Ferry, is that which called forth the admiration of the good Bishop. Here the river is crossed and the track joins the Foss road at East Stoke, Newark being reached in 17 miles. That part of the Foss road, being between the Trent and Devon rivers, was very marshy ground where, within the memory of this generation, carriers' carts were often "stogged" in the mud.

In the Roman times, sixteen centuries ago, the roadway there was probably carried over a wooden pile bridge which gave the name of *Ad Pontem* "at the bridge" to that place. The name has often been erroneously supposed to apply to Bridgford, where the Roman military station of *Margidunum*, given as being seven miles from *Ad Pontem*, is still marked by banks at the side of the Foss road.

EXTRACTS FROM PARISH REGISTERS.

BAPTISMS.

- May 27th. Frank, son of George Ernest and Emily Beatrice Thraves.
 " 28th. Thomas Edward, son of Thomas and Jemima Bower.
 June 3rd. George, son of Arthur and Kate Pailing,

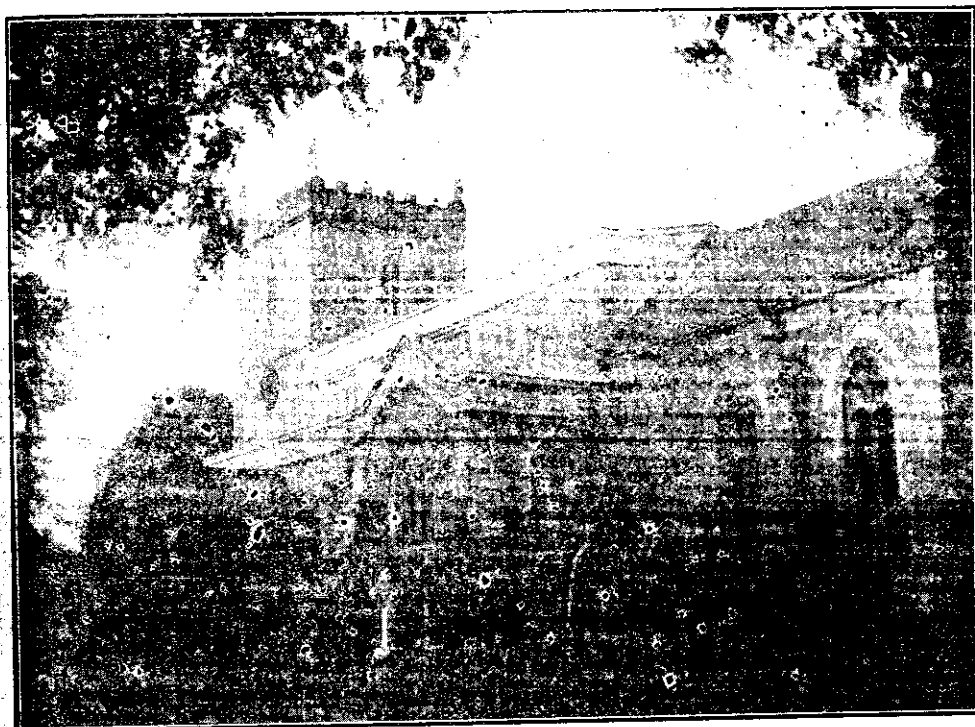
BURIAL.

- June 7th. Mary Shipman aged 76 years.

LIGHTING-UP TIMES for July, half-an-hour after sun-set, corrected for Summer time, East Bridgford.

- July 4th, 10.0 (Full Moon); 11th, 9.55; 19th, 9.47 (New Moon); 27th, 9.36.
 Lighted Windows must be obscured half an hour after these times.

EAST BRIDGFORD MAGAZINE.



St. Peter's Church, East Bridgford.

Services.

HOLY COMMUNION:—

On all SUNDAYS (except last in Month) and HOLY DAYS at 8 a.m.
and after Morning Prayer on the First Sunday in the Month.
On the last Sunday in the Month : Matins at 10 ; Choral Eucharist 10.45.

MORNING AND EVENING PRAYER:—

Sundays at 10.45, and 6.30 p.m.
Weekdays, Wednesday and Friday at 10 and 6.30 p.m. daily.

HOLY BAPTISM:—

Second Sunday in month at 3, or at other Services on due notice.

CHURCHING OF WOMEN:—

Wednesday and Friday at 10, or before any Service on due notice.

SUNDAY SCHOOL AND CATECHISM:—

At 10 a.m. in the National School. Catechism in Church at 2.30.

As we enter into the fourth year of War, it is right that we should do so by coming humbly and faithfully before God as a nation, resolved to do our duty as we conceive it, and to ask for Divine help to do it. As announced in the July Magazine, Saturday, August 4th, the anniversary of the Declaration of War, and Sunday, August 5th, will be occasions of special services. In this the church is able not only to support us personally in a time of trust, but to guide the nation effectually.

A special form of prayer will be used which will recall our thoughts to the circumstances of our entering into the War.

It will guide us to penitence: our cause in the War is just, as we believe, but we are not in all ways fitted to support our just cause, and we need penitence in this respect. It will help us to thanksgiving; for the unity, nobleness and devotion that has been called out, and the success which has been attained. It will lead us to prayer; that God will protect our sailors, soldiers and airmen, and will make of this great nation a wise and understanding people, walking humbly in faith and fear before Him.

WAR TRAVELLING VANS AND COMMON WEAL AND WAR SERVICES.—The Secretaries for the various War Societies in Nottinghamshire are arranging local shows, demonstrations, and explanations by competent speakers with regard to Food production and Food economy. A Health section has been added, as it is felt that it is of National importance at the present time that mothers should have the opportunity of gaining knowledge of the conditions of health of babies.

One of the Travelling Vans will visit East Bridgford on the 20th, 21st and 22nd of August, Monday to Wednesday. It will stand in Butt Close and demonstrations will be given in the adjoining School, as well as talks from the Van on such subjects as these:—Fruit Bottling and Drying; War-time Cookery; Allotment gardening; Insect pests; Potato spraying; Health in the home.

No charge will be made; and men and women, young and old, are all invited to hear how they can help their country and themselves.

THE SCHOOL.—The Managers of the School have been re-appointed as before. Messrs. W. A. Hodges, J. Pickford, J. Wilkinson, appointed for three years, Mr. A. W. Mason appointed by Parish Council, Miss Fox appointed by Local Education Authority, and the Rector (Chairman).

Miss M. V. Morley has been appointed as Teacher for the infants' class and will begin her duties after the holidays.

The Summer holidays will begin after Friday, August 3rd, and the School will re-open on Monday, Sept. 2nd.

During the hot weather the children have had many of their lessons in the open-air in the Rectory orchard.

The claims of the Additional Curates' Society, which supports Home Missions in populous centres, were placed before us in Church on July 29th.

THE WAR.—The names to be added to those who are serving; Pte. Albert Ellis, Charles Freestone, Notts and Derby, Pte. Reuben Morris, R.A.M.C., Maurice Walker, A.S.C., Foster Thornton, R.F.A. and John Dexter, R.G.A.

We congratulate Private William Henry Waterfield, 6 M.G.C. on receiving a Military Medal for distinguished bravery in the field on April 28th and 29th.

The attention of our readers is called to an interesting leaflet which is inserted in this number of the Magazine. It is called "Over the Top," and is written by one of the Church Army Superintendents on the Western Front.

EXTRACTS FROM PARISH REGISTERS.

BAPTISM.

July 15th. Edward Henry, son of William Henry and Elsie Ann Foster.

BURIAL.

July 19th. Laura Soles, aged 47 years.

LIGHTING-UP TIMES for August, half-an-hour after sun-set, corrected for Summer time, East Bridgford.

August 3rd, 9.25 (Full Moon); 9th, 9.12; 17th, 8.56 (New Moon); 25th, 8.38.

Lighted Windows must be obscured half an hour after these times.



EAST BRIDGFORD MAGAZINE.



St. Peter's Church, East Bridgford.

*S*ervices.

HOLY COMMUNION:—

On all SUNDAYS (except last in Month) and HOLY DAYS at 8 a.m.
and after Morning Prayer on the First Sunday in the Month.

On the last Sunday in the Month : Matins at 10 ; Choral Eucharist 10.45.

MORNING AND EVENING PRAYER:—

Sundays at 10.45, and 6.30 p.m.

Weekdays, Wednesday and Friday at 10 and 6.30 p.m. daily

HOLY BAPTISM:—

Second Sunday in month at 3, or at other Services on due notice.

CHURCHING OF WOMEN:—

Wednesday and Friday at 10, or before any Service on due notice.

SUNDAY SCHOOL AND CATECHISM:—

At 10 a.m. in the National School. Catechism in Church at 2.30.

The first fortnight of August was very wet but the rain was welcome after the dry weather, and most useful for the root crops. But the harvest was in many cases ready and waiting to be cut and the latter half of the month has been a busy time with very favourable weather upon the whole, and we may hope that the result will be an early and a fairly good harvest.

It is not yet practicable to arrange a date for the Harvest Thanksgiving, but it will probably be in the last week of September. An evening Service will be held on a Thursday and the thanksgiving continued on the following Sunday. On the Thursday evening the Harvest offerings are asked for the Church Restoration Fund, which now only needs £20 to defray the whole debt. We ought to be able to accomplish the payment of this before the end of the year. The Sunday offerings will be for the Sunday School Fund, a very worthy object and a true preparation for that other Harvest, sown in tears but reaped in joy, which we hope for in the regeneration of our country after the War.

THE WAR.—Saturday, August 4th and Sunday, August 5th, were observed as the entrance to the fourth year of War, by special Services and prayers.

We regret to have to record the death of Corp. Austin Percival Bullock 17th K.R.R.C., killed in action about August 19th. His elder brother was killed in July last year.

Also of Alfred Green and his brother-in-law James Pritchett, both killed in action.

Private William Mann, 6th Sherwood Foresters, was reported wounded and missing on July 1st. He has since been heard of as a prisoner in Germany.

HOME MISSIONS.—Collections were made in Church on July 29th, amounting to £2 18s. 10d. in support of the work of the Additional Curates' Society.

Some of our readers will be grieved to hear the news which has only lately reached the Rector, of the death of Rev. H. Graham Fullmer, who was curate of East Bridgford from 1892-1898, on March 1st, 1916. and of his wife in the following August. They left one little girl quite unprovided for. Mr. Fullmer had been for some years Organizing Secretary for A.C.S. in the Northern Dioceses.

THE "COMMON WEAL" VAN visit, announced in the Magazine last month has been accomplished with success. It was, of course, to be regretted that the Van should have happened to come in the midst of harvest work, when so many of us are fully occupied until quite late, and attendance at meetings is impossible. The van arrived on Monday, August 20th, and remained for Tuesday and Wednesday.

The subjects treated were: (1) Fruit and Vegetable preservation by Bottling and Drying processes. The demonstrations given on Monday at 3 p.m. and Wednesday at 6.30 were very interesting. By these means the supply of winter food may be largely increased and waste of fruit and vegetables in abundant seasons can be avoided.

(2) Cooking, the use of the Hay box, etc., was demonstrated on Monday at 7 on Tuesday and Wednesday at 3 p.m. A small competition of economical dishes was arranged, prizes being awarded to Mrs. Mason for a stuffed marrow with cheese, and to Mrs. Rowley for a Cornish pastry such as is used by West Country men for dinner in the fields.

(3) At the Van, drawn up in Butt Close, a demonstration in the use of the Mysto Potato Sprayer with the Burgundy mixture for preventing potato disease was given on Monday evening, and though, of course, it is too late for the present season's growth, yet the knowledge of what is now a recognized preventative cannot fail to be useful.

(4) On Tuesday evening Mr. R. F. Hearnshaw, of Burton Joyce, gave a most interesting lecture on "Eggs for Everybody," in the school. The Board of Agriculture does not encourage the rearing of table poultry now, but does recommend egg production. If every householder would start half-a-dozen pullets at once, of a good laying strain hatched last March, we should have no shortage of eggs during the coming winter. He estimated the cost of laying pullets in winter time at 4d. a week for each bird.

(5) On Wednesday evening, Mr. G. Wilson, F.R.H.S., addressed a good audience on Cooperative Gardening, a subject which East Bridgford producers should certainly take up and find profit by it. It is to be hoped after harvest other opportunities may be found of considering the matter from a practical side. Mr. Wilson also gave some remarks on Insect Pests and ways of dealing with them.

The weather was favourable during the visit, and the ladies who conducted it were much pleased with their reception, and deserve our hearty thanks.

AN EAST BRIDGFORD WORTHY.—Among the names of those who have enjoyed the scenery of East Bridgford in days gone by, that of Dr. Gilbert Sheldon, Archbishop of Canterbury, must not be forgotten. Gilbert Sheldon was born at Stanton, Staffordshire, in 1598, and became Warden of All Souls' College, Oxford. He was a most loyal supporter of King Charles I., who entrusted to him, in 1646, his vow to restore to the Church all impropriated lands. Sheldon carefully preserved the parchment record of the King's vow by burying it underground and only revealed it at the Restoration of the Monarchy on August 21st, 1660.

This loyal Warden of All Soul's was ejected from his office by the Reforming Committee of Parliament, April 13th, 1648, and was kept in custody for 6 months, when he was released on the condition that he should remove at least 5 miles from Oxford, should not visit the King in the Isle of Wight, and should appear when cited at four days notice. He was also ejected from his living of Ickford.

Under these circumstances he took refuge among his friends in Staffordshire and neighbouring counties. Dr. Thornton, the historian of this county, was living at Car Colston at the time, and he tells us that Dr. Sheldon lived in retirement for a time with an old Mrs. Okeover, a relative, in Mr. Hacker's house at East Bridgford. "He continued here three or four years," says Thornton, "well pleased with the River and fields, and honoured by the neighbourhood, to all which he was ever extraordinarily kind, and from myself amongst the rest deserves a better acknowledgement."

On the Restoration of Church and King, 1660, Sheldon was consecrated Bishop of London, and in 1663 became Archbishop of Canterbury, until his death in his 80th year, when he was buried at Croydon, Surrey, 1677. Clarendon the historian speaks of his great learning, gravity and prudence—"He was born and bred to be Archbishop of Canterbury."

Dr. Sheldon took a prominent part in the revision of the Prayer Book, and in many public events of those stirring times. He was wealthy and very generous, and contributed largely to the repair of old St. Paul's Cathedral before the great fire of London which destroyed it. He built at his own cost of £25,000, the Sheldonian Theatre at Oxford for the solemn assemblies of the University. Dr. Robert Thornton who valued his friendship, in 1677 gracefully dedicated his famous history of this county to Archbishop Gilbert Sheldon, "Once a stranger whom Nottingham took in, and thereafter more than patron to one of Nottingham's sons."

EXTRACT FROM PARISH REGISTER.

BURIAL.

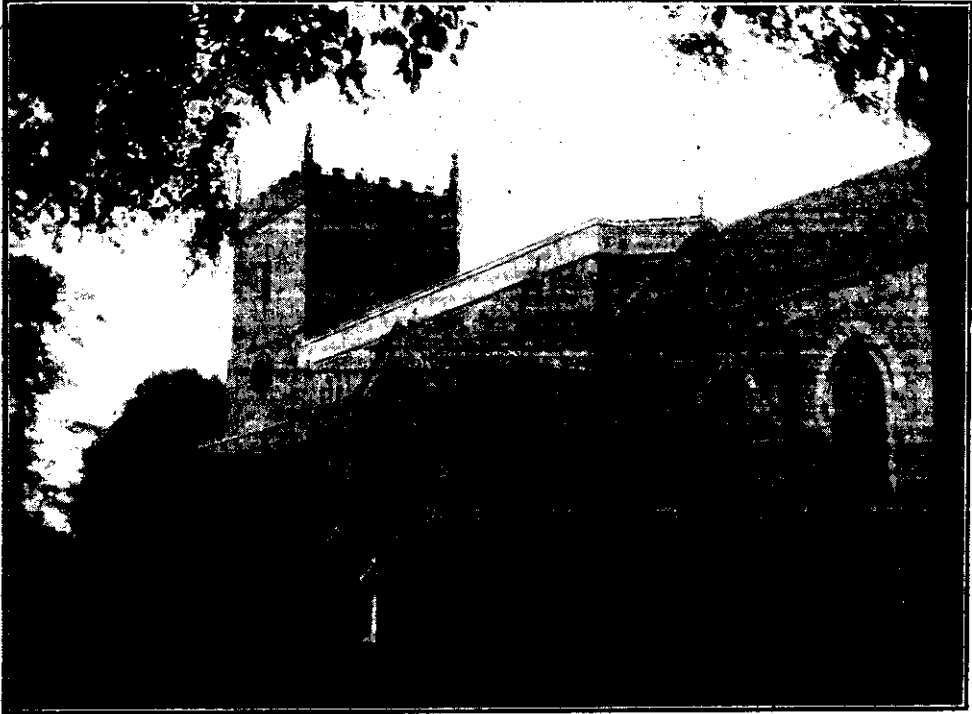
Aug. 27th. Thomas Simpkin, aged 80 years.

LIGHTING-UP TIMES for September, half-an-hour after sun-set, corrected for the ending of Summer time, East Bridgford.

Sept. 1st, 8.23 (Full Moon); 8th, 8.6; 16th, 7.47 (New Moon); 24th, 6.24; 30th, 6.13 (F. M.)
Lighted Windows must be obscured half an hour after these times.



EAST BRIDGFORD MAGAZINE.



St. Peter's Church, East Bridgford.

Services.

HOLY COMMUNION:—

On all SUNDAYS (except last in Month) and HOLY DAYS at 8 a.m.
and after Morning Prayer on the First Sunday in the Month.

On the last Sunday in the Month : Matins at 10 ; Choral Eucharist 10.45.

MORNING AND EVENING PRAYER:—

Sundays at 10.45, and 6.30 p.m.

Weekdays, Wednesday and Friday at 10 and 6.30 p.m. daily.

HOLY BAPTISM:—

Second Sunday in month at 3, or at other Services on due notice.

CHURCHING OF WOMEN:—

Wednesday and Friday at 10, or before any Service on due notice.

SUNDAY SCHOOL AND CATECHISM:—

At 10 a.m. in the National School. Catechism in Church at 2.30.

HARVEST THANKSGIVING Services will be held in East Bridgford Church on Thursday, Oct. 4th, at 7.30 p.m., and on Sunday, Oct. 7th. On Thursday evening, the Rev. R. C. Smith, Vicar of Radcliffe-on-Trent, will preach. On Sunday morning, the preacher will be the Ven. Archdeacon of Nottingham, W. J. Conybeare, who is also Rector of Southwell.

On Thursday, the offerings will be for the Church Restoration Fund. The amount still owing has now been reduced to £20 and we hope it will not be long before this debt is cleared off.

On Sunday, the Harvest Offerings will be given to the Sunday School Funds.

This year, one of the worst seeding seasons of modern times has been followed by a Harvest time correspondingly unfavourable. After the first wet fortnight in August, it seemed as though good Harvest weather had come, but wet weather again followed, culminating in very general storms on August 28th. In this neighbourhood however, we escaped the wind that seriously affected some parts of England, and on the whole the harvest has been successfully gathered in.

"Summer-time" came to an end at mid-night between Sunday, September 16th and Monday, 17th. It has so suddenly plunged us into dark evenings, that most of us are all the more willing to appreciate the benefit of the long light hours gained by the adoption of Summer time, since April 8th. We now have to be careful under the lighting regulations, which are continued in the same manner as last winter. The Church bells will not ring for evening service after October 7th, and the windows of the Church have been already provided with curtains so that service may be held as usual.

An interesting meeting was held on Wednesday, September 19th, with the object of considering a well thought-out scheme of Women's Institute. The idea began some 25 years ago in Canada where women on lonely farms needed some kind of social organization. But it was soon found to be of greater value in interchanging ideas and encouraging new methods of work by which the whole community reaped a benefit. Not only has the system spread throughout Canada, but it has been taken up in the United States and in Belgium.

Since the War began Women's Institutes have been formed in many places in England and Wales, under the Agricultural Organization Society. War-time has sharpened our faculties and has helped us to see what a great force is at our disposal in Co-operation and Organization. Many ways of economising and saving, of carrying out important efforts in improving the home-life, national health and morals, and of raising the standard of living, may in this way be promoted.

Mrs. Hobbs, of the Agricultural Organization Society, gave an address on the value of the work to be done, and Hon. Mrs. Handford described the working of an Institute which has already been formed at Southwell.

Several of those present expressed their readiness to help in the formation of a similar Institute in East Bridgford and we shall hope to hear more of it in the future.

By way of following up the suggestions made by Mr. G. H. Wilson, at one of the meetings of the Common Weal Van's visit, it is hoped that a meeting of allotment holders and market gardeners may be arranged shortly, when a speaker is promised to set before us the advantages of co-operation in agricultural work. It should be of great interest to many of us in East Bridgford, and as soon as possible notice will be given of the date of the meeting.

The annual meeting of the British and Foreign Bible Society will be held in the Temperance Hall on Friday, Oct. 26th, at 7 p.m., when the District Secretary, the Rev. W. G. Roberts, will give an address on the work carried on by the Society.

On Sunday, October 28th, the Ven. E. Hacking, Archdeacon of Newark, will preach in East Bridgford Church at the Evening Service, on behalf of the National Society. This Society has done more than any other in promoting religious Education in Schools, and is deserving of good support.

THE SCHOOL.—We are very sorry to lose Miss Gladys Clark, who has been an Assistant Teacher in the School for nearly two years, and has now resigned her post in order to enter a Training College.

Her successor, Miss Dorothy Mabel Holderness, has been appointed, and begins her duties on October 1st.

It is proposed to arrange a demonstration of the method of canning fruit and vegetables, as soon as possible, when the apparatus is at liberty for our use.

Although canning is practised on a commercial scale in this country, it has not hitherto been adopted by amateurs or small fruit-growers. It is however very popular on the farms and homesteads of America, and is considered to be a quicker method than bottling. Canning is therefore recommended for those who wish to preserve large quantities of fruit or vegetables.

Time Table for East Bridgford of Trains to and from Nottingham, for October, 1917.

Bingham.	Leave		Arrive Nottingham		Leave Nottingham.		Arrive	
	Bingham.	Lowdham.	G.N.R. Victoria.	M.R.	G.N.R. Victoria.	M.R.	Bingham.	Lowdham.
7.30	—	—	7.54	—	6.0	—	6.23	—
—	7.46	—	—	8.5	—	7.20	—	7.39
8.20	—	—	8.45	—	7.30	—	7.53	—
—	8.30	—	—	8.50	—	9.5	—	9.24
9.25	—	—	9.47	—	9.40	—	10.3	—
—	10.20	—	—	10.40	—	11.25	—	11.46
12.10	—	—	12.35	—	11.50	—	12.13	—
<hr/>								
2.1	—	—	2.25	—	—	2.5	—	2.24
—	2.4	—	—	2.27	2.15	—	2.38	—
—	4.10	—	—	4.30	—	4.40	—	4.59
4.57	—	—	5.21	—	4.55	—	5.18	—
—	6.36	—	—	6.55	6.15	—	6.38	—
6.44	—	—	7.8	—	—	6.40	—	6.58
8.28	—	—	8.53	—	7.30	—	7.59	—
—	10.15	—	—	10.35	8.47	—	9.13	—
—	—	—	—	—	—	8.50	—	9.0
—	—	—	—	—	9.40	—	10.4	—

SUNDAYS.

—	12.40	—	1.0	—	10.10	—	10.29
3.3	—	3.27	—	2.10	—	2.33	—
—	6.48	—	7.10	—	8.10	—	8.29
8.35	—	9.0	—	9.0	—	9.23	—

N.B.—All the G.N.R. trains stop at London Road (High Level Station) as well as at the Victoria Station

EXTRACT FROM PARISH REGISTER.

BURIAL.

Sept. 10th. Alfred Beach, aged 73 years.

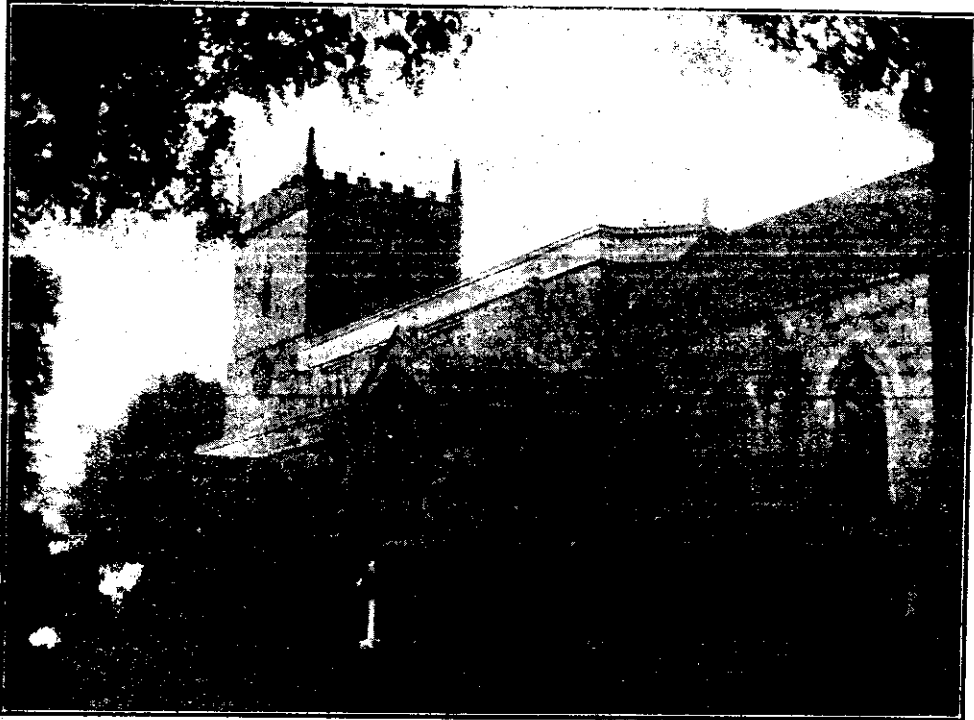
LIGHTING-UP TIMES for October, half-an-hour after sun-set, Greenwich time corrected for East Bridgford :—

Oct. 7th, 5.58 ; 16th, 5.36 (New Moon) ; 23rd, 5.21 ; 30th, 5.6 (Full Moon).

Lighted Windows must be obscured half an hour after these times.

CORRECTION.—The name of the Historian of Nottinghamshire is Thoroton, not Thornton as printed in the account of Dr. Sheldon in the September Magazine.

EAST BRIDGFORD MAGAZINE.



St. Peter's Church, East Bridgford.

Services.

HOLY COMMUNION:—

On all SUNDAYS (except last in Month) and HOLY DAYS at 8 a.m.
and after Morning Prayer on the First Sunday in the Month.

On the last Sunday in the Month : Matins at 10 ; Choral Eucharist 10.45.

MORNING AND EVENING PRAYER:—

Sundays at 10.45, and 6.30 p.m.

Weekdays, Wednesday and Friday at 10 and 6.30 p.m. daily

HOLY BAPTISM:—

Second Sunday in month at 3, or at other Services on due notice.

CHURCHING OF WOMEN:—

Wednesday and Friday at 10, or before any Service on due notice.

SUNDAY SCHOOL AND CATECHISM:—

At 10 a.m. in the National School. Catechism in Church at 2.30.

HARVEST THANKSGIVING.—The weather was as unkind to our Festival Services in Church as it was in the earlier part of the Harvest, for both Thursday, Oct. 4th, and Sunday, Oct. 7th, were very wet days, but this did not prevent the attendance of good congregations. The Rev. R. C. Smith, Vicar of Radcliffe-on-Trent, preached on Thursday evening, 7.30 p.m. and the Thanksgiving Offerings for Harvest amounted to £11 13s. 9d. for the Church Restoration Fund. On Sunday morning, the Ven. W. J. Conybeare, M.A., Archdeacon of Nottingham, preached a harvest sermon, and the collections during the day for the Sunday School were £4 16s. 10d. In the afternoon, a large gathering of children brought gifts of flowers, fruit and vegetables for the wounded soldiers. These were sent to the soldiers at the General Hospital and the Albert Hall Military Hospital, who have expressed their grateful thanks for these Harvest gifts.

CHURCH RESTORATION FUND.

	£	s.	d.
Acknowledged, June 1917	72	19	8
Harvest Offerings, Oct. 4th	11	13	9
Church Box, June—Sept.	14	11	
Mrs. Ashward	1	0	0
Mr. C. Millington (Box)	3	3	
<hr/>			
Total Oct. 25th, 1917	£ 80	11	7

The debt on the Church Restoration is now reduced to £6 2s. 1d., so that we may confidently hope to complete the payment and be free of debt by the end of this year.

THE WOMEN'S INSTITUTE.—A Meeting was held on Oct. 23rd, in King Edward Club at 2.30 p.m., as an experiment to decide whether a Women's Institute should be established in East Bridgford. An excellent address on washing woollen material was given by Miss Allen, followed by a discussion on the best methods of removing stains. An exhibition of war relics contributed by inhabitants of the village, was arranged, and a gramophone added to the entertainment. On a vote being taken the Meeting was unanimously in favour of the establishment of a Women's Institute.

The following notice of a meeting of importance to Allotment-holders, market gardeners, and all agriculturalists, has been given out:—

A Meeting will be held in the Temperance Hall, East Bridgford, on Monday, October 29th, 1917, at 7.30 p.m. Mr. Ian Calthrop, Secretary of the Agricultural Organization Society, North Midlands Branch, will give an Address on Agricultural Co-operation with a view to the formation of an Allotment Association in the District. Mr. C. H. Wilson and others will also speak. Free to all! A. D. Hill.

As the Magazine must be in the printer's hands before this date, we can now only hope it will be well attended, and must postpone a report of it till next month.

PAROCHIAL ACCOUNTS.—The following statement of all amounts received by Collections in Church, Contributions, etc., and expended during the year ending Easter 1917, will be of interest to parishioners of East Bridgford.

	£	s.	d.
Church Expenses (Churchwardens' Accounts)	78	19	9
Alms to Sick and Poor	8	0	0
Diocesan Missionary Studentship, Ascension Day, 1916	11	7	
Foreign Missions (S.P.G.)	15	2	6
Jerusalem and the East Mission to Jews, Good Friday, 1917	3	6	10
Hospitals, January 28th, 1917	11	2	0
Diocesan Sunday Fund, 1916	11	5	3
Clothing Club Subscriptions	4	2	0
Coal Club Subscriptions	13	3	6
Sunday School	8	8	10
Church Building Society	1	11	7
Church Defence Association	5	0	
Southwell House	5	2	
Red Cross and Ambulance Society, August 6th and Dec. 31st, 1916	9	14	7
Church Restoration, Collections in Church	23	15	6
<hr/>			
	£189	14	1

June, 1917.

A. D. HILL, RECTOR.

THE KING EDWARD CLUB has been opened for the season until Dec. 31st, when expense and funds will have to be considered. The subscription for this year is 3/-. All sailors and soldiers in uniform are welcome and will be admitted free.

ROLL OF HONOUR.—We regret to learn that Pte. George Wilkinson, 4th Royal Scots, was killed in action in September, and that Pte. William Peatman, 5th Sherwood Foresters, has been reported missing since Sept. 26th.

EXTRACTS FROM PARISH REGISTERS.

MARRIAGE.

Oct. 18th, at *N. Wilford*. George Henry Bateman and Eunice Evelyn Sandall.

BURIALS.

Oct. 1st. Jane Bundy, aged 49 years.
 .. 22nd. George Green, aged 91 years.

LIGHTING-UP TIMES for November, half-an-hour after sun-set, Greenwich time corrected for East Bridgford:—

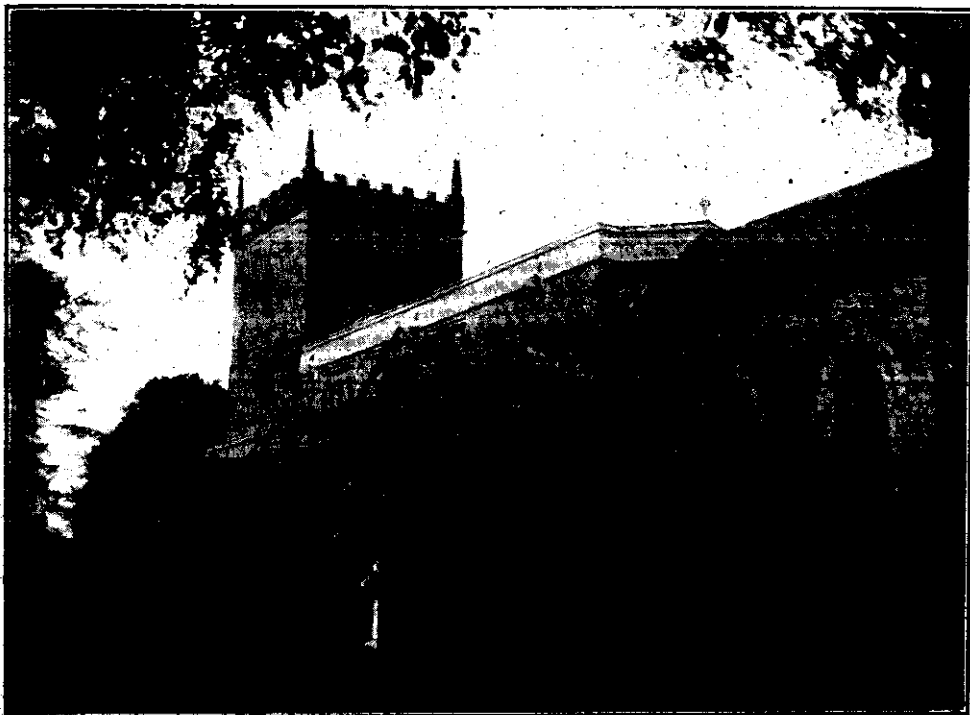
Nov. 6th, 4.54; 14th, 4.40 (New Moon); 21st, 4.31; 28th, 4.22 (Full Moon).
 Lighted Windows must be obscured half an hour after these times.

Time Table for East Bridgford of Trains to and from Nottingham, for November, 1917.

Leave		Arrive Nottingham		Leave Nottingham.		Arrive	
Bingham.	Lowdham.	G.N.R. Victoria.	M.R.	G.N.R. Victoria.	M.R.	Bingham.	Lowdham.
—	7.0	—	7.20	—	6.35	—	6.50
7.30	—	7.54	—	6.0	—	6.23	—
—	7.40	—	8.5	—	7.30	—	7.49
8.20	—	8.45	—	7.20	—	7.46	—
—	8.30	—	8.50	—	9.5	—	9.24
9.25	—	9.47	—	9.40	—	10.3	—
—	10.20	—	10.40	—	11.25	—	11.46
12.10	—	12.35	—	11.50	—	12.13	—
<hr/>							
2.1	—	2.25	—	—	2.5	—	2.24
—	2.4	—	2.27	2.15	—	2.38	—
—	4.10	—	4.30	—	4.45	—	5.4
4.57	—	5.21	—	4.55	—	5.18	—
—	6.34	—	6.55	6.15	—	6.38	—
6.44	—	7.8	—	—	6.30	—	6.50
8.28	—	8.53	—	7.30	—	7.59	—
—	10.15	—	10.35	8.47	—	9.13	—
—	—	—	—	—	8.55	—	9.14
—	—	—	—	9.40	—	10.4	—
<hr/>							
SUNDAYS.							
—	12.55	—	1.0	—	10.25	—	10.44
3.3	—	3.27	—	2.10	—	2.33	—
—	6.48	—	7.10	—	8.10	—	8.29
8.35	—	9.0	—	9.0	—	9.23	—

N.B. — All the G.N.R. trains stop at London Road (High Level Station) as well as at the Victoria Station

EAST BRIDGFORD MAGAZINE.



St. Peter's Church, East Bridgford.

Services.

HOLY COMMUNION:—

On all SUNDAYS (except last in Month) and HOLY DAYS at 8 a.m.
and after Morning Prayer on the First Sunday in the Month.

On the last Sunday in the Month : Matins at 10 ; Choral Eucharist 10.45.

MORNING AND EVENING PRAYER:—

Sundays at 10.45, and 6.30 p.m.

Weekdays, Wednesday and Friday at 10 and 6.30 p.m. daily.

HOLY BAPTISM:—

Second Sunday in month at 3, or at other Services on due notice.

CHURCHING OF WOMEN:—

Wednesday and Friday at 10, or before any Service on due notice.

SUNDAY SCHOOL AND CATECHISM:—

At 10 a.m. in the National School. Catechism in Church at 2.30.

NEW FOOD RATIONS.—The Food Controller, Sir Arthur Yapp, has issued a new scale of Voluntary Rations. The heads of every household should plan out their weekly provision, and everyone should readily fall in with this very reasonable scale, so as to economise the national food supply, and help to avoid the expense and annoyance of a system of compulsory rationing, which would have to come unless we all show in this way that we are willing and anxious to help our Country in these difficult times.

ADULT RATIONS PER HEAD PER WEEK.

Class.	Bread.	Other cereals	Meat.	Butter, Margarine Lard, Oils and Fats.	Sugar.
MEN.					
1. On very heavy industrial work or on agricultural work	8	0			
2. On ordinary industrial or other manual work	7	0			
3. Unoccupied or on sedentary work	4	8			
WOMEN.					
4. On heavy industrial work or on agricultural work	5	0			
5. On ordinary industrial work or in domestic service	4	0			
6. Unoccupied or on sedentary work	3	8			

12oz. 2lb. 0oz. 10oz. 8oz.

Children to receive reasonable rations ; no scale laid down.

Bread. The ration includes flour, $\frac{1}{2}$ lb for every pound of bread.

Other Cereals include oatmeal, barley meal, maize, rice, sago, peas, beans, etc.

Meat ration includes bacon and suet, and the average proportion of bone bought with the meat, about 3oz. in each lb. Poultry and rabbits to be counted at half their actual weight. Fish is not rationed.

Milk and cheese should be restricted as much as possible, and reserved for those for whom they are most necessary. Potatoes and fresh vegetables not rationed.

THE NATIONAL SOCIETY, which for more than 100 years has supported Religious Education and the Training of Teachers, and on more than one occasion has helped our School, was the subject of an appeal made on Sunday evening, October 28th, by the Ven. E. Hacking, Archdeacon of Newark. The collection on behalf of the Society was £1 16s.

The annual Meeting of the British and Foreign Bible Society was held on October 26th, when the Rev. W. G. Roberts gave a very interesting address. Mr. A. W. Mason presided and spoke of the value of Faith, in carrying out the Society's work. The Collection at the meeting was £1 13s. 5d.; Subscription £7 0s. 4d.; Miss Upton's box £1 4s. 1d. After deducting 9s. for hire of Carriage and Hall, the Secretary was able to send up £9 8s. 10d., being an increase of nearly £2 on the amount sent last year. Miss M. Robinson having resigned, Mrs. Smedley has undertaken the post of Secretary to the East Bridgford Association for the coming year.

AGRICULTURAL CO-OPERATION.—The Meeting mentioned in last month's Magazine was held in the Temperance Hall, on Monday, October 29th, at 7.30 p.m. The Rector presided and an address was given by Mr. G. A. O'Dell, of the Agricultural Organization Society. The attendance was not large, but those present were greatly interested in the various ways in which the speaker pointed out the advantage of co-operation to allotment-holders, market gardeners and others with small holdings. An adjourned meeting was held later, on November 12th, when the proposal of forming a local Association was informally discussed at the Rectory.

As a result, a Meeting was held on Monday, November 19th, in Mr. W. Richardson's room, which was well-attended by Allotment-holders and others. The Rector presided, and it was agreed form an Association for East Bridgford which should be affiliated to the Agricultural Organization Society and duly registered. The names of 37 members were enrolled, and a Committee formed, consisting of Messrs. J. Lodder, H. Goldston, G. Ellis, sen., W. Richardson, F. O. Green, with Rev. A. D. Hill as Secretary. The next meeting is to be on December 3rd, and Mr. W. Richardson kindly placed his room at the disposal of the Association.

THE WOMEN'S INSTITUTE has now been fairly launched and the following officers appointed :—President, Mrs. A. Mason ; Vice-Presidents, Mrs. Hill, Mrs. Smedley, Mrs. Cartwright ; Treasurer, Miss O. Swanwick ; Secretary, Miss Fox. Members must be over 15 years of age. Meetings will be held on the second Wednesday in each month, and a programme has been drawn up for meetings during the next five months, the first two of which are here given :—

Wednesday, Dec. 12th, 2.30 p.m. Talk on Women's Institutes and their work. Discussion, War-time Christmas dinners. Exhibition and Sale of Christmas dishes. Recitations.

Wednesday, Jan. 9th. Lecture, Poultry keeping ; Discussion, Prevention and cure of Colds and Chilblains. Demonstration, Poultry-making. Show and exchange of cockerells.

DIOCESAN FUND.—The Collections in Church on December 9th, will be for the Bishop's appeal for Church Extension work in the Diocese. A Collection was made on May 13th last, and there still remains £1 17s. to bring the amount up to the £10 which is asked for from this Parish.

The Military Authority for the Central Midland Counties has granted permission for the ringing of Church bells, and the striking of Clocks up to 9 p.m. It was pleasant to hear the sound of the Bells again on Sunday evening, November 11th.

ON ADVENT SUNDAY, Dec. 2nd, there will be a Celebration of Holy Communion at 8 a.m. as well as at Midday. Collections will be made for the Society for the Propagation of the Gospel in Foreign parts.

A SHORT SERVICE will be held on Wednesday evenings during Advent at 7 p.m. on Dec. 5th, 12th and 19th, with special intercessions for Sailors and Soldiers.

CHRISTMAS DAY. On Tuesday, Dec. 25th, the Birthday of Our Lord Jesus Christ, the Holy Communion will be celebrated at 8, and at Mid-day. Morning and Evening Services at 10.45 and 6.30.

On Dec. 30th, the Sunday after Christmas, there will be Choral Celebration of Holy Communion at 10.45. Mattins at 10.

NEW YEAR'S DAY, Jan. 1st, 1918.—Holy Communion at 8. We wish our readers and our parish a Happy New Year. May it be a year of progress, unity, and prosperity, and above all, of Peace throughout the world.

A DAY OF NATIONAL PRAYER.—King George has issued a definite call to his Empire, appointing the first Sunday in the new year, Jan. 6th, as a day of Prayer and Thanksgiving. This will be welcomed by all who believe that religion is the highest of all human interests, and it is good that it should be not only the officials of the Church, but the King, as representing all his people, who issues this Call to ask in a spirit of reverent obedience the blessing of Almighty God upon our endeavours.

“England, on thy knees to-night
“Pray that God defend the right.”

LIGHTING-UP TIMES for December, half-an-hour after sun-set, Greenwich time corrected for East Bridgford :—

Dec. 6th, 4.17; 14th, 4.16 (New Moon); 21st, 4.16; 28th, 4.22 (Full Moon).

Lighted Windows must be obscured half an hour after these times.

Time Table for East Bridgford of Trains to and from Nottingham, for December, 1917.

Bingham.	Leave		Arrive Nottingham		Leave Nottingham		Arrive	
	Bingham.	Lowdham.	G.N.R. Victoria.	M.R.	G.N.R. Victoria.	M.R.	Bingham.	Lowdham.
—	7.0	—	7.20	—	6.35	—	6.50	—
7.30	—	7.54	—	6.0	—	6.23	—	—
—	7.46	—	8.5	—	7.30	—	7.49	—
8.20	—	8.45	—	7.20	—	7.46	—	—
—	8.30	—	8.50	—	9.5	—	9.24	—
9.25	—	9.47	—	9.40	—	10.3	—	—
—	10.20	—	10.40	—	11.25	—	11.46	—
12.10	—	12.35	—	11.50	—	12.13	—	—
2.1	—	2.25	—	—	2.5	—	2.24	—
—	2.4	—	2.27	2.15	—	2.38	—	—
—	4.10	—	4.30	—	4.45	—	5.4	—
4.57	—	5.21	—	4.55	—	5.18	—	—
—	6.34	—	6.55	6.15	—	6.38	—	—
6.44	—	7.8	—	—	6.30	—	6.50	—
8.28	—	8.53	—	7.30	—	7.59	—	—
—	10.15	—	10.35	8.47	—	9.13	—	—
—	—	—	—	—	8.55	—	9.14	—
—	—	—	—	9.40	—	10.4	—	—

SUNDAYS.

—	12.55	—	1.0	—	10.25	—	10.44
3.3	—	3.27	—	2.10	—	2.33	—
—	6.48	—	7.10	—	8.10	—	8.29
8.35	—	9.0	—	9.0	—	9.23	—

N.B.—All the G.N.R. trains stop at London Road (High Level Station) as well as at the Victoria Station