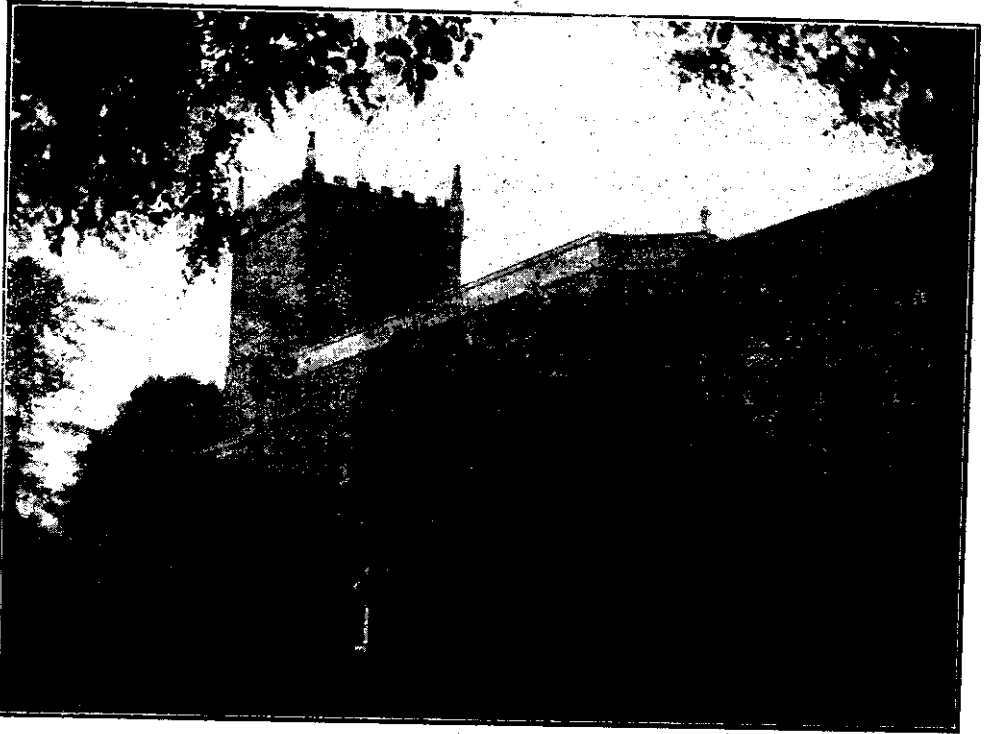


# EAST BRIDGFORD MAGAZINE.



*St. Peter's Church, East Bridgford.*

## Services.

### HOLY COMMUNION:—

On all SUNDAYS (except first in Month) and HOLY DAYS at 8 a.m. also after Morning Prayer on the Third Sunday in the Month.

On the first Sunday in the Month: Matins at 10; Choral Eucharist 10.45.

### MORNING AND EVENING PRAYER:—

Sundays at 10.45, and 6.30 p.m.

Weekdays, Wednesday and Friday at 10; and 6.30 p.m. daily

### HOLY BAPTISM:—

First Sunday in month at 3, or at other Services on due notice.

### CHURCHING OF WOMEN:—

Wednesday and Friday at 10, or before any Service on due notice.

### SUNDAY SCHOOL AND CATECHISM:—

At 10 a.m. in the National School. Catechism in Church at 2.30.

## CHURCH RESTORATION FUND.

With great thankfulness, we are now able to record that the whole of the debt on the Church Restoration is paid off. The collection in Church on Christmas Day, £12 3s. 7d., with 4/7 from the Church Box, has brought our long task to a conclusion in a fitting manner, as our thank-offering to God on this Festival.

It may be recalled that the Restoration of the Church was begun in 1902, and that during the fifteen years that have passed since then, the total sum that has been raised and expended amounts very nearly to £5,000.

The small balance £1 15s. 4d. which remains in hand will be placed towards the provision of a new flag for the Church Tower, which will cost about £3. Perhaps there are some who would like to add what is still needed to this amount.

A balance sheet is appended showing the accounts since the issue of the last statement, printed June 12th, 1916 :—

		June 1916, to December 1917.			
		£	s. d.	£	s. d.
Subscriptions, as acknowledged in				Balance owing June 12th, 1916 ..	94 13 8
Magazine ..	.. 48 4 6	..	48 4 6	Bank Charges to December 1916 ..	4 1 0
Collections in Church ..	.. 48 17 6	..	48 17 6	Balance in hand ..	1 15 4
Church Box ..	.. 3 8 0	..	3 8 0		
		£100	10 0		£100 10 0

December 27th, 1917.

A. D. HILL, Treasurer.

January 6th, the F. of Epiphany and the first Sunday in the New Year, is the day appointed as a Day of Intercession as well as of Thanksgiving throughout the King's dominions. The King's proclamation is as follows :—

### THE KING'S PROCLAMATION.

To MY PEOPLE.—The world-wide struggle for the triumph of right and liberty is entering upon its last and most difficult phase. The enemy is striving by desperate assaults and subtle intrigue to perpetuate the wrongs already committed and stem the tide of a free civilization. We have yet to complete the great task to which, more than three years ago, we dedicated ourselves.

At such a time I would call upon you to devote a special day to prayer that we may have the clear-sightedness and strength necessary to the victory of our cause. This victory will be gained only if we steadfastly remember the responsibility which rests upon us, and in a spirit of reverent obedience ask the blessing of Almighty God upon our endeavours. With hearts grateful for the divine guidance which has led us so far towards our goal let us seek to be enlightened in our understanding and fortified in our courage in facing the sacrifices we may yet have to make before our work is done.

I therefore hereby appoint January 6th—the first Sunday of the year—to be set aside as a special day of prayer and thanksgiving in all the Churches throughout my dominions, and require that this Proclamation be read at the services held on that day.

GEORGE R.I.

On this Sunday, there will be celebrations of Holy Communion at 8 a.m. and at Mid-day, and a special Form of Prayer will be used at Morning and Evening Prayer. The alms will be given to the Red Cross and Ambulance Society.

NOTES FOR 1918.—Easter Day, March 31st ; Whit-Sunday, May 19th ; Feast Sunday, June 23rd ; Sundays after Epiphany 2 ; After Trinity, 26.

During this year, the Choral Celebration of the Holy Communion will be on the first Sunday in each month, at 10.45, preceded by Mattins at 10. There will be a Celebration at 8 o'clock on all other Sundays, and there will also be a celebration after Morning Prayer on the third Sunday in each month.

This arrangement of the services will be easier to remember, and will provide a mid-day celebration generally on alternate Sundays. Occasionally, as at times of the Great Festivals, an alteration may be necessary ; and from Easter to Michaelmas one service in the month will be at 7 instead of 8 a.m.

HOSPITAL SUNDAY is arranged for January 27th, Septuagesima Sunday.

THE CHORAL SOCIETY sang carols on Christmas Eve, and made a collection on behalf of the National Institute for the Blind, which resulted in the contribution of over £5.

The members of the East Bridgford Gardens Allotments and Small-holdings Association are reminded that the Monthly meetings will be held on the second Monday in each month at half-past seven o'clock. The next meeting will be on Jan. 14th, when the Secretary hopes to be in a position to report on the orders for Potatoes and Seeds which were given in December. Members should bring or send their subscriptions of 2/- (1/- annual subscription, 1/- entrance fee) to the next meeting, as the advantage of the purchases made depends on having funds in hand.

WOMEN'S INSTITUTE.—The first meeting, held on Dec. 12th, proved most successful. The next meeting is on Wednesday, Jan. 9th, when the subject is Poultry keeping.

As a practical undertaking for the present time, a soup kitchen has been established, where excellent soup may be obtained on Fridays at one penny per pint.

THE SCHOOL.—The Rev. E. F. Braley, Diocesan Inspector of Religious Education in the Diocese of Southwell, visited the school on Tuesday, Nov. 27th. In his report, he says :—

“As far as I could see in a short time there seems to be a distinct atmosphere of reverence throughout the school. The tone is excellent. The teachers handle the religious subjects with reverence, and the scholars must catch something of their spirit. The hymns and prayers were rendered quite devotionally.”

The Rector's prizes were awarded to the following children :—

Class I.—Marjorie Towle, Enno Raynor. Class II.—Dorothy Waterfield, Oswald May. Class III.—Howard Fletcher, Edith Marsh. Infants.—Robert Fox Mills, Cecily Crossland.

The School re-opens after the Christmas holidays on Monday, Jan. 7th.

THE WAR.—The following have lately been called up for Service .—

Cecil Curtis (Sherwoods), George Jackson (R.E.), Ernest Cooper (R.N.A.S.), John Wright Wilkinson (R.F.A.), and William Lodder.

THE BAND OF HOPE gave a very bright and original entertainment on Thursday, December 27th, to a crowded audience in the Temperance Hall. There were songs by the children, a brilliant skipping performance, a set of tableaux, and a final patriotic tableaux with appropriate songs in costume by representatives of the British Empire and her Allies. Those who arranged the entertainment, and the children who had taken so much pains, may be congratulated on a great success.

## EXTRACTS FROM PARISH REGISTERS.

### BAPTISM.

Dec. 24th. Peregrine Maitland, son of Wilmot and Jessie Leila Blomefield.

### BURIALS.

Nov. 27th. Ann Straw, aged 79 years.

Dec. 28th. Harriet Coulson, aged 73 years.

LIGHTING-UP TIMES for December, half-an-hour after sun-set, Greenwich time corrected for East Bridgford :—

Jan. 5th. 4.29 ; 12th. 4.40 (New Moon) ; 19th. 4.51 ; 27th. 4.55 (Full Moon).

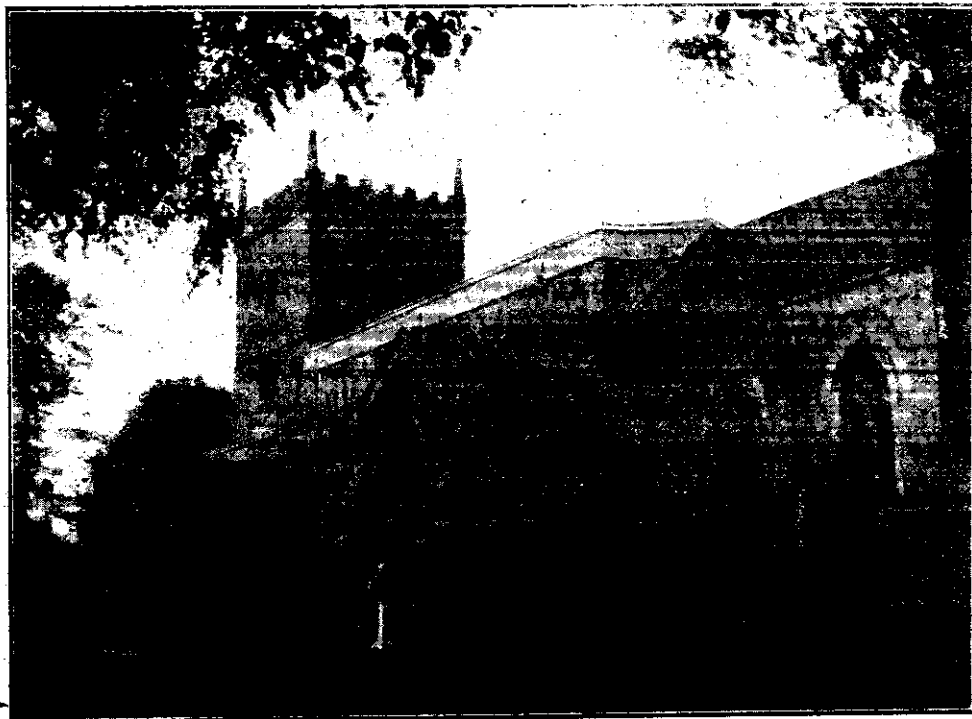
Lighted Windows must be obscured half an hour after these times.

### Time Table for East Bridgford of Trains to and from Nottingham.

Leave		Arrive Nottingham		Leave Nottingham.		Arrive	
Bingham.	Lowdham.	G.N.R. Victoria.	M.R.	G.N.R. Victoria.	M.R.	Bingham.	Lowdham.
—	7.0	—	7.20	—	6.35	—	6.50
7.30	—	7.54	—	6.0	—	6.23	—
—	7.46	—	8.5	—	7.30	—	7.49
8.20	—	8.45	—	7.20	—	7.46	—
—	8.30	—	8.50	—	9.5	—	9.24
9.25	—	9.47	—	9.40	—	10.3	—
—	10.19	—	10.38	—	11.25	—	11.46
12.10	—	12.35	—	11.50	—	12.13	—
2.1	—	2.25	—	—	2.5	—	2.24
—	2.4	—	2.27	2.15	—	2.38	—
—	4.10	—	4.30	—	4.45	—	5.4
4.57	—	5.21	—	4.55	—	5.18	—
—	6.34	—	6.55	6.15	—	6.38	—
6.44	—	7.8	—	—	6.30	—	6.50
8.28	—	8.53	—	7.30	—	7.59	—
—	10.20	—	10.35	8.47	—	9.13	—
—	—	—	—	—	8.55	—	9.14
—	—	—	—	9.40	—	10.4	—
<b>SUNDAYS.</b>							
—	12.55	—	1.15	—	10.25	—	10.44
3.3	—	3.27	—	2.10	—	2.33	—
—	6.48	—	7.10	—	8.10	—	8.29
8.35	—	9.0	—	9.0	—	9.23	—

.B. — All the G.N.R. trains stop at London Road (High Level Station) as well as at the Victoria Station

# EAST BRIDGFORD MAGAZINE.



*St. Peter's Church, East Bridgford.*

## Services.

### HOLY COMMUNION:—

On all SUNDAYS (except first in Month) and HOLY DAYS at 8 a.m. also after Morning Prayer on the Third Sunday in the Month.

On the first Sunday in the Month: Matins at 10; Choral Eucharist 10.45.

### MORNING AND EVENING PRAYER:—

Sundays at 10.45, and 6.30 p.m.

Weekdays, Wednesday and Friday at 10; and 6.30 p.m. daily

### HOLY BAPTISM:—

First Sunday in month at 3, or at other Services on due notice.

### CHURCHING OF WOMEN:—

Wednesday and Friday at 10, or before any Service on due notice.

### SUNDAY SCHOOL AND CATECHISM:—

At 10 a.m. in the National School. Catechism in Church at 2.30.

THE first Sunday in the year, January 6th, was observed in Church and Chapel as a Day of Prayer and Intercession on behalf of the Nation and Empire in this time of War. The appointed forms of Service were used, and it was clearly felt that the whole nation was engaged in the same acts of prayer and thanksgiving to Almighty God at the same time. As in other places, the licensed victuallers readily agreed to the closing of their houses.

The collections in Church were given to the Red Cross and S. John Ambulance Funds, and amounted to £7. The expenditure of these Societies on behalf of the sick and wounded men at the various battle-fronts and at home, averages over £60,000 a week.

EGG COLLECTION for the wounded. Miss Sharp reports that 3,586 eggs have been contributed during the past year, and hopes that those who have helped her will continue to do so.

THE WAR SAVINGS ASSOCIATION has been the means of purchasing War Certificates up to the end of 1917 to the amount of £289 1s. 6d. and the School War Savings Association of an additional £52 14s.

The visit of a "Tank" to Nottingham from January 21st to 26th, has no doubt attracted many visitors, who we hope have done their best to further the national appeal for War Savings.

It has been announced that Major (temp. Lt. Col.) Herbert Milward Milward, Notts and Derby Regt., has received the distinction of a Bar to his D.S.O.

THE WOMEN'S INSTITUTE monthly meeting is on Wednesday, February 6th, when a lecture on Food Production will be given.

THE EAST-BRIDGFORD ALLOTMENTS ASSOCIATION meeting is on Monday, February 11th at 7.30.

ASH WEDNESDAY.—The first day of Lent falls on February 13th. There will be a Service at 9.15, and Holy Communion 11, and an Evening Service at 7 p.m.

On Wednesdays during Lent there will be Evening Service at 7 p.m., and a celebration of Holy Communion on Friday mornings at 8.

A Confirmation will be held at Bingham on April 29th, and the Rector will be glad to know if there are any who desire to be presented for Confirmation this year, that he may make arrangements in good time for their preparation.

Snow fell on Monday night, January 14th, and the wind caused drifts which blocked the roads in some places. A heavier fall of quite 6 inches in depth came on Wednesday 16th, but the thaw followed soon after and the snow was all gone by Saturday.

## EXTRACTS FROM PARISH REGISTERS.

### BAPTISM.

Dec. 28th, 1917. George Robert, son of William and Dinah Lawrance.

### BURIALS.

Jan 15th, 1918. Lucy Ann Hemphrey, aged 46 years.

LIGHTING-UP TIMES for February, half-an-hour after sun-set, Greenwich time corrected for East Bridgford :—

Feb. 4th, 5.21 ; 11th, 5.35 (New Moon) ; 18th, 5.49 ; 25th, 6.2 (Full Moon).

Lighted Windows must be obscured half an hour after these times.

The following list of those who are serving in the Navy and Army, contains, I hope, the names of all whose parents, wives or children are now residing in East Bridgford. Some others who have quite recently been living amongst us but have lately left the village, and six who have served and received their discharge, are also included in this list.

Charles Kirkland Allwood	William Forrest	John Cecil Pickford
Joseph Allwood	Cecil Forrest	Arthur Price
Charles Atkinson	William Gelsthorpe	John Raynor
Sidney Bateman	Henry Percy Goldston	Otto Raynor
Charles Walter Bateman	George Gower	Arthur Richardson
George Bateman	Robert Gower	Samuel Richardson
Bentley Blagg, R.N.	Douglas Hallam	Walter Savage
Rupert Blagg	Tom Higgs	Gerald Saward
George Blagg	Cecil Hodges	John Henry Shardlow
Wilmot Blomefield	William Hodges	Bernard Bryan Simpkin
Edward Bullers	Leonard Hodges	Bernard Smedley
George Cartwright	Harold Hodges	Bernard Smith
William Carrington	Reginald Hodges	Claude Smith
Ernest Chapman	Sidney Hoyles	Charles Edward Smith
Frederick William Clough	Edwin Hunt	Harry Stanley
George Edward Clough	John Frederick Hunt	James Stanley
John Cloxton	John Tom Huskinson	Henry Talkes
Harry Cloxton	George Jackson	Sidney Taylor
George Cloxton	Albert Jollands	Arthur Thraves
Whittle Cloxton	Edmund Jones	Tom Thraves
Ernest Cloxton	Robert Jones	Foster Thornton
William Cooper	Arthur Kemp	Harry Upton
Ernest Cooper	William Lodder	Charles Upton
Joseph Cox	Arthur Evelyn Manchester	Arthur Upton
Harry Crossland	William Mann	Rowland Upton
John Crossland	John Marshall	Maurice Walker
Arthur Crossland	Fred Marshall	William Henry Waterfield
George Crossland	Robert Marshall	Alfred Watson
George Crossland	Arthur Edward Millington	Harold Watts
Frank Curtis	John Mills	Eric Watts
Cecil Curtis	Herbert Milward	Kingsley Weatherell
George Dawson	Richard Milward	Cuthbert Weatherell
Anthony Victor Dent	Gervase Milward	Francis Wilkinson
John Dexter	Roderick Milward	Robert Wilkinson
Herbert Dickenson	Charles Moor	Horace Wilkinson
Harry Ellis	Reuben Morris	John Wright Wilkinson
Charles Ellis	Robert Moss	Charles Wilkinson
Albert Ellis	William Mussell	Tom Wilkinson
Robert Ellis	Walter Pacey	Leonard Wilkinson
Arthur Euerby	Gilbert Padgett	Clarence Widdison
Charles Freestone	Arthur Pailing	George Widdison
Richard Forrest	William Bernard Peatman	Jack Woodsend
Percy Forrest	Arthur Pepper	Arthur Woodsend
		Noel Woodsend

## THE ROLL OF HONOUR OF THOSE WHO HAVE FALLEN,

Urban Blagg, Pte. 2nd Sherwood Foresters. Oct. 20th, 1914.  
 Ernest Goddard, Pte. 1st Lincs. Feb. 5th, 1915.  
 Herbert Richards, Sapper, Royal Engineers May 25th, 1915.  
 John Rudkin (Newton), Pte. 8th Sherwood Foresters. July 30th, 1915.  
 William Kirkham (Newton), Pte. 8th Sherwood Foresters. August 14th, 1915.  
 William Henry Manchester Guy, Pte. 12th Sherwood Foresters. Sept. 26th, 1915.  
 John Henry Upton, Pte. 2nd Grenadier Guards. Nov. 22nd, 1915.  
 Horace Cloxton, Bombardier R.F.A. July 18th, 1916.  
 Charles Hugh Brambley, Pte. Royal Berks. July 3rd, 1916  
 Herbert Bullock, Cyclists Corps. July 4th, 1916.  
 Cecil B. Robinson, Lieut. West Yorks. Sept. 14th, 1916.  
 George Moss Pepper, Pte. Northumberland Fusiliers. Sept. 15th, 1916.  
 Alfred Henry Green, Gunner R.F.A., July 14th, 1917.  
 Austin Percival Bullock, Corp. 1711, K.R.R.C. Aug. 9th, 1917.  
 George Wilkinson, Pte. 4th Royal Scots. Sept. 1917.

### Time Table for East Bridgford of Trains to and from Nottingham.

Bingham.	Leave		Arrive Nottingham		Leave Nottingham.		Arrive	
	Bingham.	Lowdham.	G.N.R. Victoria.	M.R.	G.N.R. Victoria.	M.R.	Bingham.	Lowdham.
—	7.0	—	7.20	—	—	6.35	—	6.50
7.30	—	7.54	—	6.0	—	6.23	—	—
—	7.46	—	8.5	—	—	7.30	—	7.49
8.20	—	8.45	—	7.20	—	7.46	—	—
—	8.30	—	8.50	—	—	9.5	—	9.24
9.25	—	9.47	—	9.40	—	10.3	—	—
—	10.19	—	10.38	—	—	11.25	—	11.46
12.10	—	12.35	—	11.50	—	12.13	—	—
<hr/>								
2.1	—	2.25	—	—	2.5	—	—	2.24
—	2.4	—	2.27	2.15	—	2.38	—	—
—	4.10	—	4.30	—	4.45	—	—	5.4
4.57	—	5.21	—	4.55	—	5.18	—	—
—	6.34	—	6.55	6.15	—	6.38	—	—
6.44	—	7.8	—	—	6.30	—	—	6.50
8.28	—	8.53	—	7.30	—	7.59	—	—
—	10.20	—	10.35	8.47	—	9.13	—	—
—	—	—	—	—	8.55	—	—	9.14
—	—	—	—	9.40	—	10.4	—	—
<hr/>								
<b>SUNDAYS.</b>								
—	12.55	—	1.15	—	10.25	—	—	10.44
3.3	—	3.27	—	2.10	—	2.33	—	—
—	6.48	—	7.10	—	8.10	—	—	8.29
8.35	—	9.0	—	9.0	—	9.23	—	—

N.B. — All the G.N.R. trains stop at London Road (High Level Station) as well as at the Victoria Station

# EAST BRIDGFORD MAGAZINE.



*St. Peter's Church, East Bridgford.*

## Services.

### HOLY COMMUNION:—

On all SUNDAYS (except first in Month) and HOLY DAYS at 8 a.m.  
also after Morning Prayer on the Third Sunday in the Month.

On the first Sunday in the Month: Matins at 10; Choral Eucharist 10.45.

### MORNING AND EVENING PRAYER:—

Sundays at 10.45, and 6.30 p.m.

Weekdays, Wednesday and Friday at 10; and 6.30 p.m. daily

### HOLY BAPTISM:—

First Sunday in month at 3, or at other Services on due notice.

### CHURCHING OF WOMEN:—

Wednesday and Friday at 10, or before any Service on due notice.

### SUNDAY SCHOOL AND CATECHISM:—

At 10 a.m. in the National School. Catechism in Church at 2.30.

DURING LENT, there is a Service on each Wednesday evening at 7 p.m.  
Holy Communion on Fridays at 8; but in Holy week, on Thursday,  
March 28th.

ON GOOD FRIDAY, there will be Services at 8, 11 and 7.30.

ON EASTER DAY, March 31st, there will be Celebrations of the Holy Communion at 7, 8 a.m. (choral) and at mid-day; and on the following Sunday, April 7th, at 8 a.m. This should give everyone an opportunity of making their Easter Communion during the Festival.

The cost of supplying and printing the Magazine, and railway carriage was increased about 25 per cent. during the past year. It will still be supplied to subscribers for 1d., but the Rector invites those who can afford it to give an additional contribution of 6d. a year to defray the extra cost.

Contributions towards a new flag for the Church are asked for. It will cost about £4. Already received: Mr. Turner 2/6, Mr. Allwood 2/6.

Mrs. Hill has lost an umbrella with a crook handle and would be glad to hear if it has been left at any house.

THE TANK.—The War Savings Association sent £75 14s. 6d., in addition to many sums contributed by individuals to the Tank Fund at Nottingham in January.

SUMMER TIME.—The announcement has been made that the "Daylight Saving" is to be five weeks longer than it was last year. It will begin on March 24th (Palm Sunday) when the clocks will be advanced one hour, and will end on Sunday, September 29th (Michaelmas Day). On March 24th, the sun rises here at 6 o'clock and sets 6.21; these will be called in summer time 7 o'clock and 7.21 respectively. Agricultural workers, who are of course already in the habit of taking advantage of early hours, will naturally keep to the old time of beginning work, though they may find it more convenient to alter the *name* of the hour at which they begin so as to be in agreement with the clocks. If you begin work at sunrise on March 25th, it makes no difference whether it is called 6 or 7 o'clock. But the difficulty comes when you get home to tea and find you are an hour behind other people.

HOSPITAL SUNDAY.—The Collection at Church on Jan. 27th, was £8 11s. 7d. of which £1 was allocated to the Children's Hospital, and 10/6 to the Eye Hospital in Nottingham.

The Collection on Ash Wednesday, 17/10, was for the Preventive and Rescue Work carried on by Southwell House, Nottingham.

A CONCERT was given on Thursday, January 31st, by the Choral Society in aid of the Blinded Heroes' Fund of the National Institution for the Blind. The first part of the Concert was Mendelssohn's Hymn of Praise, and the second part consisted of Songs, violin solos and part songs. The Artistes were Miss Moore, Miss Peplow, Miss Pearson, Mrs. Richardson (violin), Messrs. G. Lawton and W. B. Haynes.

AN OLD EAST BRIDGFORD INDUSTRY.—Nottinghamshire is the principal gypsum producing county of England. Gypsum, or calcium sulphate, is found as a white stone in layers in the red marl which forms the subsoil of most of the south and east parts of the county through which the Trent flows. It has been slowly deposited in the course of ages by water trickling

through the crevices. The gypsum held in solution in the water gives it that unpleasant hardness with which we are too familiar. It makes the water of Newark peculiarly suitable for brewing, but we could very well do without it in the water of our wells.

Gypsum occurs in various forms: in Derbyshire it is quarried as a soft, beautifully-marked stone called *Alabaster*, used for carving and ornamental building. From the 14th to the 16th centuries Nottingham was famous for its alabaster carvings, and supplied the beautiful tombs and effigies of knights and ladies which still remain in many an English Church. Another form is the *Rough*, extensively quarried at Cropwell Bishop and Newark. It is roasted and ground to powder, forming "plaster of Paris." A third form of gypsum, called satin-spar, consists of straight crystalline fibres which give it a beautiful silky appearance. This is found chiefly at East Bridgford. Nowhere else in the neighbourhood are the crystalline fibres of such a length as 6 or 8 inches. It occurs in beds sometimes 10 yards across, from 28 to 30 feet below the surface of the ground, and is reached by sinking a pit through which it is brought to the surface, when it is commonly known as "plaster."

Sixty years ago, says Mr. Ben Chapman, as a boy I was ganging for Tom Clark and Edward Manchester, getting the plaster where Mr. C. Kirkland lives now, then owned by Dodson. There were six or seven men employed in getting plaster during the winter—old John Dent, Millington, Herod and others. It was also obtained in the brickyards; ten tons of plaster, good and rough together would be piled on top of the brickkiln and burnt for two days. It was then threshed with flails, like corn, in the old plaster barn still standing in Brickyard lane, and the burnt stone crumbled to powder. There was a good demand for it to make the plaster floors which may be seen in many of the older houses.

Some of it was burnt in a kiln at Cotton's hill, near the old Malt houses by the river, to be loaded on boats for Nottingham.

The finer satin stone was also used for ornamental purposes: Mr. Levers had pits in Moss Close, and employed six workers in turning ornaments. A good deal went to Derby where there were 50 or 60 workers, but the trade has gone out of the country now, and Mr. Welsh, of Derby, the last survivor, has only a few learners at it.

There is still however a demand for East Bridgford satin spar, and about 9 tons has quite recently been sent to Derby. Its value in the raw state is about £6 a ton. America finds a use for it, and sometimes 30 or 40 tons has been sent at one time. When the late Rev. A. Barker was in America, he visited Niagara Falls, where visitors are invited to buy ornaments made of what is called "petrified spray." He asked where it came from, and was told it came from a place in England called Bridgford. "So do I" he said, and felt quite proud of his parish.

Could not a minor industry, of which we might almost have the monopoly, be revived, and our beautiful satin-spar be utilized in its native place?

It has been suggested that the name of Margidunum, the Roman station on the Foss, is derived from the latin "margarita," a pearl, from the pearly lustre of the satin spar found here, but no good philologist could accept such a derivation.

A.D.H.



**GARDENS AND ALLOTMENTS ASSOCIATION.**—The monthly meeting will be held on Monday, March 11th, at 7.30. A lecture will be given at this meeting by Mr. A. Wagg, a good practical gardener sent to us by the Food Production Department, on "The planting, management, and pruning of Fruit trees." There should be a good attendance of members.

**WOMEN'S INSTITUTE.**—The meeting for this month will be on Wednesday, March 13th. Subjects: Co-operative marketing; what to do in the garden this month.

## EXTRACTS FROM PARISH REGISTERS.

### BAPTISMS.

Feb. 3rd. Muriel Tharby, daughter of Tom and Agnes Annie Higgs.  
 ,, 10th. John Richard, son of John Thomas and Ellen Knight.

### BURIAL.

Feb. 13th. John Richard Knight, aged 4 days.

**LIGHTING-UP TIMES** for March, half-an-hour after sun-set, Greenwich time, corrected for East Bridgford and Summer-time (after March 24th):—

March 6th, 6.20; 12th, 6.29 (New Moon); 19th, 6.42; 27th, 7.56 (Full Moon).

Lighted Windows must be obscured half an hour after these times.

### Time Table for East Bridgford of Trains to and from Nottingham.

Leave		Arrive Nottingham		Leave Nottingham.		Arrive	
Bingham.	Lowdham.	G.N.R.	M.R.	G.N.R.	M.R.	Bingham.	Lowdham.
		Victoria.		Victoria.			
—	7.0	—	7.20	—	6.35	—	6.50
7.30	—	7.54	—	6.0	—	6.23	—
—	7.46	—	8.5	—	7.30	—	7.49
8.20	—	8.45	—	7.20	—	7.46	—
—	8.30	—	8.50	—	9.5	—	9.24
9.25	—	9.47	—	9.40	—	10.3	—
—	10.19	—	10.38	—	11.25	—	11.46
12.10	—	12.35	—	11.50	—	12.13	—
2.1	—	2.25	—	—	2.5	—	2.24
—	2.4	—	2.27	2.15	—	2.38	—
—	4.10	—	4.30	—	4.45	—	5.4
4.57	—	5.21	—	4.55	—	5.18	—
—	6.34	—	6.55	6.15	—	6.38	—
6.44	—	7.8	—	—	6.30	—	6.50
8.28	—	8.53	—	7.30	—	7.59	—
—	10.20	—	10.35	8.47	—	9.13	—
				—	8.55	—	9.14
				9.40	—	10.4	—

### SUNDAYS.

—	12.55	—	1.15	—	10.25	—	10.44
3.3	—	3.27	—	2.10	—	2.33	—
—	6.48	—	7.10	—	8.10	—	8.29
8.35	—	9.0	—	9.0	—	9.23	—

N.B.— All the G.N.R. trains stop at London Road (High Level Station) as well as at the Victoria Station

# EAST BRIDGFORD MAGAZINE.



*St. Peter's Church, East Bridgford.*

## *Services.*

### HOLY COMMUNION:—

On all SUNDAYS (except first in Month) and HOLY DAYS at 8 a.m.  
also after Morning Prayer on the Third Sunday in the Month.  
On the first Sunday in the Month: Matins at 10; Choral Eucharist 10.45.

### MORNING AND EVENING PRAYER:—

Sundays at 10.45, and 6.30 p.m.  
Weekdays, Wednesday and Friday at 10; and 6.30 p.m. daily.

### HOLY BAPTISM:—

First Sunday in month at 10, or at other Services on due notice.

### CHURCHING OF WOMEN:—

Wednesday and Friday at 10, or before any Service on due notice.

### SUNDAY SCHOOL AND CATECHISM:—

At 10 a.m. in the National School. Catechism in Church at 2.30.

SUMMER TIME has come in and with it the longer light evenings for garden work. It is hardly necessary to remind East Bridgford folk of the immense importance to the Country at large of the production of food; but it is satisfactory to feel that the agricultural worker is regarded with sincere appreciation, and that the importance to the nation of this great industry is fully recognized?

A successful "Women Land Workers' Rally" was held in the Temperance Hall on Monday, February 25th, under the presidency of Mr. J. Wilkinson. Mr. F. J. Perry explained the seriousness of the food situation and the need for female labour, and Mrs. Cartwright explained the organization provided by the Board of Agriculture and the privileges offered to the Land Workers. A large number of badges and certificates were presented by Mrs. Eaton, Chairwoman of the Bingham District, and songs and recitations were contributed by Mrs. Andrews who is herself a Land Worker.

ROLL OF HONOUR.—Pte. William Bernard Peatman, 10th Batt. Notts. and Derby, has been missing since September 26th, 1917, and Pte. Sydney John Taylor, 2nd S. Staffs. was reported wounded and missing on Nov. 30th, 1917. No further report of either of these two soldiers having been received we regret to record that their deaths must now be presumed to have occurred.

We congratulate Driver Arthur Pailing, R.E., on having received a Belgian distinction, the **Croix de Guerre**, for coolness and bravery displayed at Passchendaele, September, 1917, when he completed his journey and delivered his load under heavy shell fire after being severely wounded.

The EASTER VESTRY MEETING will take place in the School, at 8 p.m., on Tuesday, April 2nd, for the election of Churchwardens. This Meeting is open to all rate-payers.

At the close of the Official Vestry Meeting a further meeting will be held for the presentation of Church Accounts, appointment of Sidesmen and the Election of five members of the Church Council, to serve for three years.

Those who are entitled to vote are the baptized and confirmed members of the Church of England resident in the parish.

ALLOTMENTS ASSOCIATION.—At the meeting held on March 11th, Mr. A. Wagg was unfortunately unable to be present to give his lecture on "The management of Fruit trees," owing to an attack of influenza. He has, however, promised to come for the next meeting which takes place at 8.30 p.m., on Monday, April 8th. Members are asked to note that the meeting will be held at a later hour for the convenience of those who are working in their gardens.

WOMEN'S INSTITUTE.—This month the day of the meeting is altered on account of a Land Workers' Demonstration in Nottingham on the Wednesday. The Institute meeting will therefore be held on Tuesday, April 9th, at 2.30 p.m.

THE RECTOR desires to ask for help in two ways. First, for the Sunday School, especially those who would undertake a class at 10 on Sunday mornings. Secondly, for men to help in the Choir. It is really of the highest importance that our work at home should be maintained; and of those who are still at home there ought to be some who would undertake work on behalf of their Church, even at the cost of some self-denial. But will they not offer themselves without waiting to be asked?

The Rector will be away from East Bridgford for two Sundays, April 21st and 28th. The services on these days will be taken by Rev. A. W. R. Turner.

★  
DIOCESAN SUNDAY.—On May 5th (Rogation Sunday) we have the Bishop's appeal, made to every parish in the Diocese, to contribute our share to the various organizations and work carried on in the Diocese of Southwell. We have hitherto been able to send up the amount apportioned to us, and there should not be any slackening of our efforts. The Bishop's letter will be read in Church on the previous Sunday.

## EXTRACTS FROM PARISH REGISTERS.

### BAPTISM.

March 3rd Florence May, daughter of William Bernard and Ethel May Peatman.

RAILWAY ALTERATIONS.—We are warned that there may be fewer trains and several alterations in April, but it has not been possible to ascertain them in time for publication in the Magazine.

LIGHTING-UP TIMES for April, half-an-hour after sun-set, Greenwich time, corrected for East Bridgford and Summer-time:—

April 4th, 8.9; 11th, 8.24 (New Moon); 18th, 8.36; 26th, 8.50 (Full Moon).

Lighted Windows must be obscured half an hour after these times.

## Time Table for East Bridgford of Trains to and from Nottingham.

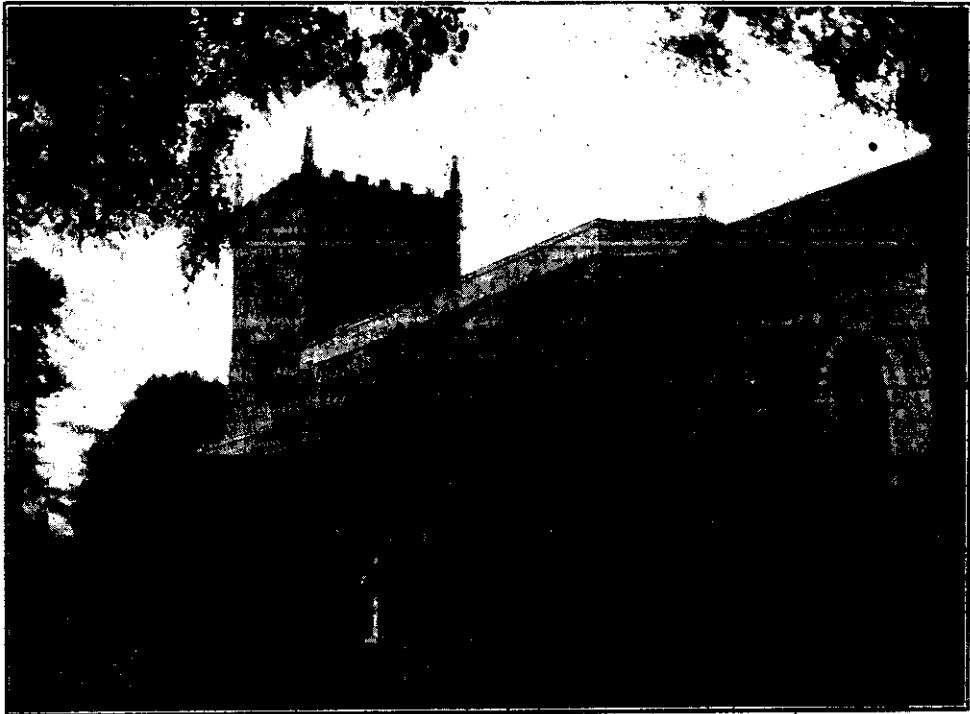
Leave		Arrive Nottingham		Leave Nottingham.		Arrive	
Bingham.	Lowdham.	G.N.R.	M.R.	G.N.R.	M.R.	Bingham.	Lowdham.
		Victoria.			Victoria.		
—	7.0	—	7.20	—	6.35	—	6.50
7.30	—	7.54	—	6.0	—	6.23	—
—	7.46	—	8.5	—	7.30	—	7.49
8.20	—	8.45	—	7.20	—	7.46	—
—	8.30	—	8.50	—	9.5	—	9.24
9.25	—	9.47	—	9.40	—	10.3	—
—	10.19	—	10.38	—	11.25	—	11.46
12.10	—	12.35	—	11.50	—	12.13	—
<hr/>		<hr/>		<hr/>		<hr/>	
2.1	—	2.25	—	—	2.5	—	2.24
—	2.4	—	2.27	2.15	—	2.38	—
—	4.10	—	4.30	—	4.45	—	5.4
4.57	—	5.21	—	4.55	—	5.18	—
—	6.34	—	6.55	6.15	—	6.38	—
6.44	—	7.8	—	—	6.30	—	6.50
8.18	—	8.53	—	7.30	—	7.50	—
—	10.20	—	10.35	8.47	—	9.13	—
—	—	—	—	—	8.55	—	9.14
—	—	—	—	9.40	—	10.4	—

### SUNDAYS.

—	12.55	—	1.15	—	10.25	—	10.44
3.3	—	3.27	—	2.10	—	2.33	—
—	6.48	—	7.10	—	8.10	—	8.29
8.35	—	9.0	—	9.0	—	9.23	—

N.B.— All the G.N.R. trains stop at London Road (High Level Station) as well as at the Victoria Station

# EAST BRIDGFORD MAGAZINE.



*St. Peter's Church, East Bridgford.*

## *Services.*

### HOLY COMMUNION:—

On all SUNDAYS (except first in Month) and HOLY DAYS at 8 a.m.  
also after Morning Prayer on the Third Sunday in the Month.

On the first Sunday in the Month : Matins at 10 ; Choral Eucharist 10.45.

### MORNING AND EVENING PRAYER:—

Sundays at 10.45, and 6.30 p.m.

Weekdays, Wednesday and Friday at 10 ; and 6.30 p.m. daily.

### HOLY BAPTISM:—

First Sunday in month at 3, or at other Services on due notice.

### CHURCHING OF WOMEN:—

Wednesday and Friday at 10, or before any Service on due notice.

### SUNDAY SCHOOL AND CATECHISM:—

At 10 a.m. in the National School. Catechism in Church at 2.30.

The EASTER VESTRY MEETING was held as usual on Tuesday in Easter week at 8 p.m. for the appointment of Churchwardens, and after this statutory business the meeting of ratepayers was closed and a duly summoned meeting of Church electors opened, for the presenting of the Church accounts, the appointment of sidesmen, and the triennial election to the Church Council.

The accounts were presented by the outgoing Churchwardens, and were left open for the purpose of receiving subscriptions to defray the adverse balance. They are finally closed as given below, showing a debt of 10/- due to the Churchwardens.

SUMMARY OF CHURCH ACCOUNTS, EASTER 1918.

Receipts.		£	s.	d.	Expenditure.		£	s.	d.		
Subscriptions for Curtains 1917 ..		7	10	0	Church Maintenance, viz:—						
Collections—					Churchyard ..	2	10	0			
Church Expenses ..	69	18	0½	Insurance and Fees ..	6	2	0				
1st Sunday in month ..	7	13	10	Choir and Organ ..	9	19	5				
Saints' Days, etc. ..	1	15	1	Salaries ..	39	10	0				
Special purposes, viz:—				Lights, Fuel, Cleaning ..	17	18	9½				
Church Restoration ..	31	2	8	Sundries ..	2	17	5				
Sunday School ..	4	16	10	Alms, Sick and Poor ..	7	13	10				
			35	19	6	Curtains for Windows ..	9	0	6		
Prisoners ..	5	17	2	Special Objects (as other side) ..	95	8	5				
Red Cross ..	7	0	0								
Diocesan Funds ..	10	14	0								
Missions S.P.G. ..	5	8	4								
Missionary Students ..	18	8									
Jews' Mission ..	2	5	5								
Home Missions ..	2	18	10								
Hospitals ..	8	11	7								
Church Bg. Society ..	10	0									
National Society ..	1	16	0								
Southwell House ..	17	11									
Poor Clergy ..	12	11	0								
			59	8	11						
Subscriptions 1918 ..	8	5	0								
Balance due to Church Wardens ..	10	0									
			£ 191	0	4½				£ 191	0	4½

The appointments to official posts will be seen in the following list of the members of the Church Council.

Ex-officio members for 1918—

The Rector, Chairman.  
 Mr. Jos. Turner, } Churchwardens.  
 Miss G. Fox, }  
 Mr. C. Allwood, }  
 Mr. E. E. Coville, } Sidesmen.  
 Mr. C. Millington, }

Elected members for 3 years—

Mr. H. Goldston.  
 Mr. W. A. Hodges.  
 Mr. W. Lander, } Sidesmen.  
 Mr. R. D. Shardlow, }  
 Mr. W. R. Sharman, }

ON GOOD FRIDAY.—£2 5s. 5d. was contributed to Missions to the Jews in Jerusalem and the East.

ON EASTER DAY, the offerings were given in response to an appeal from the Bishop on behalf of the poor clergy of the Diocese, and amounted to £12 11s.

DIOCESAN SUNDAY.—Rogation Sunday, May 5th, is the day on which collections are to be made in every parish throughout the Diocese on behalf of the various organizations for Church work. The Bishop's letter, read in Church, explains the purpose, and our parish is called upon to contribute £10 10s. as its share of the estimated expenditure during the coming year.

AGRICULTURAL ASSOCIATION.—At the monthly meeting held on April 8th, a very practical lecture on "the management of Fruit Trees" was given by Mr. A. Wagg, gardener at Ossington. The lecture had been postponed from the previous month, and in consequence of the light evenings being now available for garden work, was held at 8.30 p.m. The monthly meetings will be discontinued during the summer.

Will the Members of the Committee please remember to attend at 8.30 on Monday, May 13th, for important business.

WOMEN'S INSTITUTE.—The next meeting will be on Tuesday, May 14th, at 6.30 p.m. (instead of the afternoon). Programme:—Demonstration of Fruit canning and exhibition of Breakfast dishes and Husband's dinners (with recipes).

CHORAL SOCIETY.—Mr. R. C. Richardson, Hon. Secretary, is now able to report that the proceeds of the Concert given on January 31st, were £18 10s. and that he has been able to hand over the sum of £15 to Sir Arthur Pearson's fund for Blinded Soldiers.

THE SOUP KITCHEN is now closed for this season, having been in existence for 15 weeks (with the exception of the Holy Week) from December 21st to April 5th. The Treasurer reports as follows:—"The total sales have realized £9 12s. 10d. being a weekly average of 13/9. The actual quantity sold is 2,314 pints, and in addition a much appreciated donation to a certain number of H.M. Forces, who on one occasion were passing the village on a cold Friday in January, and were entertained without charge. The expenditure has been £6 19s. and the receipts £9 12s. 10d. The subscriptions given to start the venture have been returned to the contributors, and as no charge was incurred for the time and labour which was freely given, there remains a balance of £2 13s. 10d. in hand for future use."

A. PERCY FIELD, *Hon. Treas.*

**THE ROLL OF HONOUR.**—In consequence of the very serious occurrences at the Western Front at the end of March, we have to record the following casualties, and desire to offer our sympathy with the anxiety and sorrow of the relatives of those whose names are mentioned :—

Capt. Eric Watts, W. Kents, reported missing, March 21st.  
2nd Lt. Percy H. Forrest, M.G.C., reported wounded and missing, March 21st.  
Capt. Harold Augustus Hodges, S. Lancs, reported missing March 24th.  
Pte. John Frederick Hunt, Sherwood Foresters, killed by shrapnel, March 24th.

THE Railway time tables are not given this month, as the Railway Companies have warned us of alterations, but have not yet announced them.

ASCENSION DAY, Thursday, May 9th.—Mattins at 9 ; Holy Communion at 11 a.m. ; Evensong 7.30 p.m. ; and Sunday after Ascension, Holy Communion at 8. Collection for Diocesan Missionary Studentship.

WHIT-SUNDAY, May 19th.—Holy Communion 8 and mid-day.

TRINITY SUNDAY, May 26th.—Holy Communion at 8.

FIRST SUNDAY AFTER TRINITY, June 2nd.—Mattins at 10 ; Holy Communion (Choral) at 10.45.

## EXTRACTS FROM PARISH REGISTERS.

### BAPTISMS.

March 24th. Edward Christopher, son of George Henry and Eunice Evelyn Bateman.  
April 14th. Gordon Hemphrey, son of Arthur Hemphrey and Doris Evelyn Smith.

### MARRIAGE.

March 30th. *At Morton, Derbs.* Herbert James Kirkham and Gertrude Richards.

### BURIALS.

March 26th. Emma Harrison, aged 41 years.  
April 1st. Henry James Cloxton, aged 77 years.

LIGHTING-UP TIMES for May, half-an-hour after sun-set, Greenwich time, corrected for East Bridgford and Summer-time :—

May 3rd, 8.42 ; 10th, 8.55 (New Moon) ; 17th, 9.8 ; 25th, 9.21 (Full Moon).

Lighted Windows must be obscured half an hour after these times.

# EAST BRIDGFORD MAGAZINE.



*St. Peter's Church, East Bridgford.*

---

## Services.

### HOLY COMMUNION:—

On all SUNDAYS (except first in Month) and HOLY DAYS at 8 a.m.  
also after Morning Prayer on the Third Sunday in the Month.

On the first Sunday in the Month : Matins at 10 ; Choral Eucharist 10.45.

### MORNING AND EVENING PRAYER:—

Sundays at 10.45, and 6.30 p.m.

Weekdays, Wednesday and Friday at 10 ; and 6.30 p.m. daily.

### HOLY BAPTISM:—

First Sunday in month at 3, or at other Services on due notice.

### CHURCHING OF WOMEN:—

Wednesday and Friday at 10, or before any Service on due notice.

### SUNDAY SCHOOL AND CATECHISM:—

At 10 a.m. in the National School. Catechism in Church at 2.30.



THE ROLL OF HONOUR.—In addition to the list of casualties given last month, we regret to have to record the name of Alfred Watson, 14th Yorks and Lancs, who was killed on March 21st, 1918. Rupert Blagg and Eric Watts, reported missing, have now been heard from as Prisoners of War. William Mann, prisoner and wounded ten months ago, has been released, but has lost a leg; and Charles Allwood has lost his right arm; also Whittle Cloxton has been wounded, and these men are now in hospital in England.

Vere Wilkinson, R.F.C. and Frederick Ellis, Sher. For., are now called up for service.

#### SUNDAY SERVICES IN JUNE :—

June 2nd.	Mattins at 10; Holy Communion 10.45.
.. 9th.	Holy Communion at 8 a.m.
.. 16th.	Holy Communion at Mid-day after Morning Prayer.
.. 23rd.	Feast Sunday. Holy Communion at 8 a.m.
.. 30th.	Holy Communion at 7 a.m.

THE CHURCH IN WALES.—Just after War was declared in August, 1914, a Bill was hastily passed in Parliament for the Disestablishment and Disendowment of the Church in Wales. The actual operation of the Bill was postponed till the end of the war, and while so many Welsh Churchmen have been answering the call of the Empire at the front, they have abstained from protest or controversy on the subject. Meanwhile many of the supporters of the bill, especially among Nonconformists in Wales, have come to see the terrible injustice of diverting from the purpose of Religion those endowments which had been originally dedicated to the service of God.

A few weeks before Christmas an incident occurred which affords a good object lesson bearing upon English traditions and English honour. When General Allenby entered Jerusalem, he made a great Proclamation to the peoples of different creeds, Christian, Jewish and Mahammedan, who had interests in the Holy City. He assured them as a matter of course that men of honour as English people were, regarded things like that as sacred things, and that they need have no fear that arrangements that had been made or endowments provided for religious purposes would be allocated in any other way or put to any other use.

We would urge the Government at least to pass a short bill postponing the date of Disestablishment for a definite period after the conclusion of the war, so as to give opportunity for that reconsideration of the Welsh Church Act which is so strongly demanded. The Archbishop's Central Committee for Defence and Instruction asks for support and interest in its effort to promote such an appeal.

The Diocesan Sunday Collections on May 5th, in response to the Bishop's appeal to this parish for help in the Church work in the Diocese of Southwell, amounted to £8 3s. 10d.; which together with our Easter offering of £12 11s. for Poor Clergy, was sent in to the Treasurer of the Church Extension Society.

THE WOMEN'S INSTITUTE announces a meeting on Tuesday, June 11th, at 6.30, with a competition for Floral Table Decoration; and a Show and Sale of Institute Industries on Tuesday in Feast week, June 25th, to be held in the Temperance Hall.

FEAST SUNDAY is June 23rd, Holy Communion at 8 a.m. Let us make a special remembrance on that day of all our dear lads, who are serving their country, and of those who have given their lives for their homes and the right. And let us pray that God may find us faithful too, and may give us a clear vision and courageous endurance for the work which lies before us. He has done great things for us in the days that are passed, and He will not forsake us if we still press forward in His strength.

## EXTRACTS FROM PARISH REGISTERS.

### BAPTISM.

March 24th. Sybil Marjorie, daughter of John Denton and Annie Elizabeth Crossland.

LIGHTING-UP TIMES for June, half-an-hour after sun-set, Greenwich time, corrected for East Bridgford and Summer-time :—

June 2nd, 9.47; 8th, 9.53 (New Moon); 16th, 10.0; 24th, 10.3 (Full Moon).

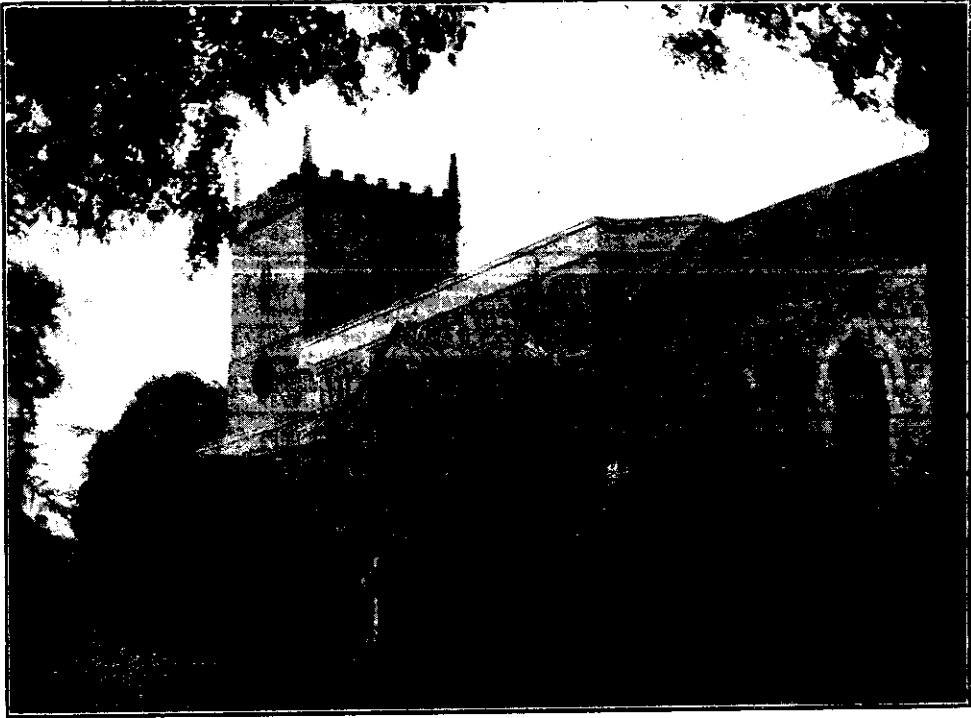
Lighted Windows must be obscured half an hour after these times.

## Time Table for June for East Bridgford of Trains to and from Nottingham.

Bingham.	Leave		Arrive Nottingham		Leave Nottingham.		Arrive	
	Bingham.	Lowdham.	G.N.R. Victoria.	M.R.	G.N.R. Victoria.	M.R.	Bingham.	Lowdham.
—	7.0	—	—	7.20	—	6.35	—	6.50
7.30	—	—	7.54	—	6.0	—	6.23	—
—	7.46	—	—	8.5	—	7.30	—	7.49
8.20	—	—	8.45	—	7.20	—	7.43	—
—	8.30	—	—	8.50	—	9.5	—	9.24
9.27	—	—	9.51	—	9.35	—	10.0	—
—	10.19	—	—	10.38	—	11.25	—	11.47
12.16	—	—	12.40	—	11.30	—	11.53	—
<hr/>								
2.2	—	—	2.26	—	—	2.5	—	2.25
—	2.4	—	—	2.27	2.15	—	2.38	—
—	4.10	—	—	4.30	—	4.45	—	5.4
4.58	—	—	5.22	—	4.50	—	5.13	—
—	6.34	—	—	6.55	6.15	—	6.38	—
7.5	—	—	7.29	—	—	6.30	—	6.50
8.50	—	—	9.14	—	7.30	—	7.59	—
—	10.20	—	—	10.35	8.25	—	8.51	—
—	—	—	—	—	—	8.55	—	9.14
—	—	—	—	—	9.44	—	10.8	—
<hr/>								
<b>SUNDAYS.</b>								
—	12.55	—	—	1.15	—	10.25	—	10.44
3.3	—	—	3.27	—	2.10	—	2.33	—
—	6.49	—	—	7.10	—	8.10	—	8.29
8.35	—	—	9.0	—	9.0	—	9.23	—

N.B. — All the G.N.R. trains stop at London Road (High Level Station) as well as at the Victoria Station

# EAST BRIDGFORD MAGAZINE.



*St. Peter's Church, East Bridgford.*

## *Services.*

### HOLY COMMUNION:—

On all SUNDAYS (except first in Month) and HOLY DAYS at 8 a.m.  
also after Morning Prayer on the Third Sunday in the Month.

On the first Sunday in the Month : Matins at 10 ; Choral Eucharist 10.45.

### MORNING AND EVENING PRAYER:—

Sundays at 10.45, and 6.30 p.m.

Weekdays, Wednesday and Friday at 10 ; and 6.30 p.m. daily.

### HOLY BAPTISM:—

First Sunday in month at 3, or at other Services on due notice.

### CHURCHING OF WOMEN:—

Wednesday and Friday at 10, or before any Service on due notice.

### SUNDAY SCHOOL AND CATECHISM:—

At 10 a.m. in the National School. Catechism in Church at 2.30.

THE WOMEN'S INSTITUTE for East Bridgford and District, and the Bingham Women's Institute united to hold an Exhibition of Women's Industries and Sale, in the Temperance Hall, East Bridgford on Tuesday, June 25th, from 3 to 8 p.m. Stalls were prettily arranged round the hall with examples of the following branches of work:—

War time cookery, with Recipes.

Garden Produce, Bottled Fruit, etc.

Live Poultry, Rabbits, Cheese, Eggs, Flowers.

Needlework and Thrift Articles.

Baskets (made by Bingham members).

Loan Exhibition of Fine Needlework, Old Lace and Curios.

There was also a stall for the sale of second-hand articles, in aid of the District Nurse Fund, which raised £2 13s. ; and a Gift Stall, the proceeds of which, £4 13s. 6d. were for the Red Cross Fund. Light refreshments were provided. The entrance money was for the funds of the Institute.

The exhibition was opened at 3 p.m. by Mrs. Le Marchant. In her opening speech she congratulated East Bridgford on the quantity and quality of its exhibits, and hoped Bingham would follow the example and have a show of its own next year. She pointed out how admirably its motto "for Home and Country" expressed the main features of the Institute movement, namely to help the Home, that the Home might help the Country. She suggested this might be extended to the relations between countries, the familiar phrase "I keep myself to myself" being replaced by "I help myself to help others." England is pre-eminently the home-making nation, while America and France have a greater social gift, the power of making friends. The virtues of each should be the ideal of all, for we all need to learn from each other.

ON FEAST SUNDAY, June 23rd, collections were made in Church for the Prisoners of War Fund, amounting to £8 13s. 9d.

The Volunteers attended a Parade Service at the Wesleyan Chapel on Sunday, June 23rd.

The Allotments Association met on Monday, June 17th, and a Committee Meeting will be held on Monday, July 8th, which the members are particularly requested to attend. About £42 worth of potatoes have been procured and distributed among the members. Arrangements by which members may have the use of the potato spraying apparatus have been made, and early application should be made to the Hon. Sec.

Some of our readers may have received a copy of what is called a Red Cross Prayer chain, which they are asked to write out and send on to others, in repetition of a foolish idea that was widely spread some few years ago. It is of course quite right to pray for victory, but what possible value can there be in a prayer made under the threat of trouble if you do not do it, or in expectation of receiving a reward for asking some one else to pray? It is merely an ignorant revival of some of the medieval superstition of buying prayers, and I hope everyone will do his best to stop it, by leaving it alone and not wasting money upon it.

#### SUNDAY SERVICES, JULY 7th :—

July 7th.	Sixth Sunday after Trinity.	Mattins at 10 ; Choral Celebration of Holy Communion 10.45.
.. 14th.	Seventh Sunday after Trinity.	Holy Communion at 8 a.m.
.. 21st.	Eighth Sunday after Trinity.	Holy Communion at 7 a.m. and Mid-day
.. 28th.	Ninth Sunday after Trinity.	Holy Communion at 8 a.m.
Aug. 4th.	Tenth Sunday after Trinity.	Mattins at 10. Choral Celebration 10.45

LIGHTING-UP TIMES for July, half-an-hour after sun-set, Greenwich time, corrected for East Bridgford and Summer-time :—

July 1st, 9.58 ; 8th, 9.55 (New Moon) ; 16th, 9.48 ; 23rd, 9.39 (Full Moon) ; 30th, 9.30.

Lighted Windows must be obscured half an hour after these times.



## Time Table for July for East Bridgford of Trains to and from Nottingham.

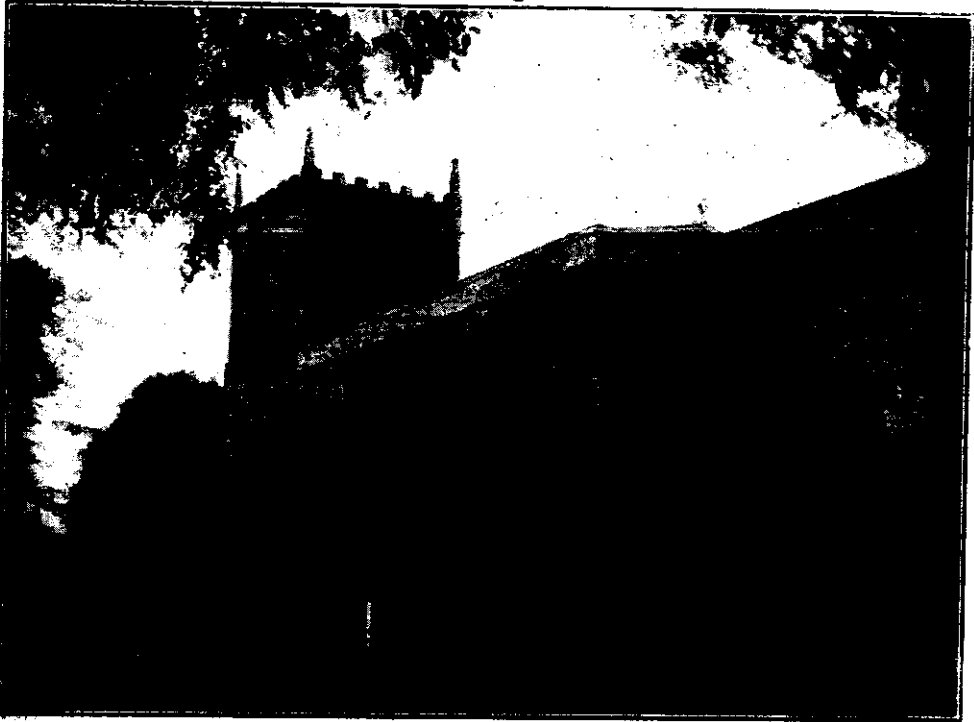
Leave		Arrive Nottingham		Leave Nottingham.		Arrive	
Bingham.	Lowdham.	G.N.R.	M.R.	G.N.R.	M.R.	Bingham.	Lowdham.
		Victoria.		Victoria.			
—	7.	—	7.20	—	0.35	—	6.50
7.30	—	7.54	—	6.0	—	6.23	—
—	7.4 6	—	8.5	—	7.30	—	7.49
8.20	—	8.45	—	7.20	—	7.43	—
—	8.30	—	8.50	—	9.5	—	9.24
9.27	—	9.51	—	9.35	—	10.0	—
—	10.19	—	10.38	—	11.25	—	11.47
12.16	—	12.40	—	11.30	—	11.53	—
<hr/>							
2.2	—	2.26	—	—	2.5	—	2.25
—	2.4	—	2.27	2.15	—	2.38	—
—	4.10	—	4.30	—	4.45	—	5.4
4.58	—	5.22	—	4.50	—	5.13	—
—	6.34	—	6.55	6.15	—	6.38	—
7.5	—	7.29	—	—	6.30	—	6.50
8.50	—	9.14	—	7.30	—	7.59	—
—	10.20	—	10.35	8.25	—	8.51	—
				—	8.55	—	9.14
				9.44	—	10.8	—

### SUNDAYS.

—	12.55	—	1.15	—	10.25	—	10.44
3.3	—	3.27	—	2.10	—	2.33	—
—	6.49	—	7.10	—	8.10	—	8.29
8.35	—	9.0	—	9.0	—	9.23	—

N.B. — All the G.N.R. trains stop at London Road (High Level Station) as well as at the Victoria Station

# EAST BRIDGFORD MAGAZINE.



*St. Peter's Church, East Bridgford.*

## *Services.*

### HOLY COMMUNION :—

On all SUNDAYS (except first in Month) and HOLY DAYS at 8 a.m.  
also after Morning Prayer on the Third Sunday in the Month.

On the first Sunday in the Month : Matins at 10 ; Choral Eucharist 10.45.

### MORNING AND EVENING PRAYER :—

Sundays at 10.45, and 6.30 p.m.

Weekdays, Wednesday and Friday at 10 ; and 6.30 p.m. daily

### HOLY BAPTISM :—

First Sunday in month at 3, or at other Services on due notice.

### CHURCHING OF WOMEN :—

Wednesday and Friday at 10, or before any Service on due notice.

### SUNDAY SCHOOL AND CATECHISM :—

At 10 a.m. in the National School. Catechism in Church at 2.30.

AUGUST 1TH, the first Sunday in this month, is the Fourth Anniversary of the Declaration of the War. We are entering upon the fifth year of this terrible and world-wide struggle. It is only right that we should regard the occasion as a Day of remembrance of the noble deeds of our gallant men who have fallen in the fight for freedom: as a Day of remembrance of the services of men and women who are risking their lives and giving their work for the preservation of civilization: as a Day of remembrance of the many mercies and deliverances already vouchsafed to us by Almighty God: and as a Day of remembrance of the high ideals for the attainment of which the Allied nations have already suffered so much.

It is only right that we should attend a special service to invoke the blessing of God on our just cause, and on the brave men who are upholding it. The Holy Communion will be celebrated in Church at 10.45. It is in this great service that our Saviour has taught us to share together, not only with those kneeling at the same Altar, but with all His people, the living and the dead, and to plead afresh, with Jesus Christ Himself, His All-Sufficient Sacrifice, once offered, but ever being pleaded by Him at the Heavenly Throne. After evensong at 6.30 special prayers and hymns will also be used.

There will also be a public service held at 3 p.m. on that Sunday afternoon in the Temperance Hall, for a united act of prayer and remembrance on this occasion.

THE WOMEN'S INSTITUTE held their Monthly Meeting in Mrs. Dexter's garden on Tuesday, July 16th. Mrs. Hobbs gave a very interesting account of the growth of dancing as a natural instinct of graceful movement. The old English country dances have a charm and simplicity, which have disappeared in the modern dances. The style ought to be revived both in dance and song that a purer and more refined taste may be encouraged. Mrs. Hobbs herself gave some exquisite examples of the true old English songs, and a party of girls trained by Mrs. Dexter, gave admirable examples of several old dances.

The balance sheet of the Industries Exhibition held on June 25th, was presented, showing additional sums received for some of the special objects. The amounts given in last month's magazine will therefore now stand as follows: Second-hand stall for District Nurse Fund, £3 5s. 5d., Red Cross Stall £6 9s. 6d. The balance left in hand after defraying expenses, is £5 0s. 6d. for the funds of the Institute.

The next meeting will be on Tuesday, August 13th, at 6.30. Programme: Discussion, The Ideal Cottage; Competition (judged by vote) Sampler of decorative stitching; Entertainment.

We record with regret the death of our neighbour, the Rev. John Standish, B.A., who has been Vicar of Scarrington for thirty-three years. For several years he very kindly gave us his assistance by coming to East Bridgford regularly as Conductor of the Choral Society, for which he was well qualified by his musical talent. To many of us also he has been known as a diligent parish priest, a wise friend, and a man of great antiquarian learning. He was buried in Scarrington Churchyard on Tuesday, July 2nd.

Our readers will be very sorry to hear of the death of Mrs. Weatherell, who lived for many years at the Old Hall, East Bridgford. It took place very suddenly on July 13th, at her new home, Roughton House, Bridgnorth, Salop.

The School has been closed for two weeks' holiday in July, when the fruit-gathering will be an employment for many children, and a further holiday will be given during three of the Harvest weeks.

We congratulate Miss R. Gower in having obtained by examination her Diploma in General Hygiene.

#### EXTRACTS FROM PARISH REGISTERS. BURIALS.

July 16th, at *Worfield, Salop*, Helen Weatherell, aged 60 years.  
„ 15th. Tom Green, aged 70 years.

LIGHTING-UP TIMES for August, half-an-hour after sun-set, Greenwich time, corrected for East Bridgford and Summer-time:—

August 6th, 9.19 (New Moon); 14th, 9.3; 22nd, 8.46 (Full Moon); 28th, 8.33.  
Lighted Windows must be obscured half an hour after these times.

## Time Table for July for East Bridgford of Trains to and from Nottingham.

Bingham.	Leave		Arrive Nottingham		Leave Nottingham.		Arrive	
	Lowdham.		G.N.R. Victoria.	M.R.	G.N.R. Victoria.	M.R.	Bingham.	Lowdham.
—	7.0		—	7.20	—	6.35	—	6.50
7.30	—		7.54	—	6.0	—	6.23	—
—	7.46		—	8.5	—	7.30	—	7.49
8.20	—		8.45	—	7.20	—	7.43	—
—	8.30		—	8.50	—	9.5	—	9.24
9.27	—		9.51	—	9.35	—	10.0	—
—	10.19		—	10.38	—	11.25	—	11.47
12.16	—		12.40	—	11.30	—	11.53	—
<hr/>								
2.2	—		2.26	—	—	2.5	—	2.25
—	2.4		—	2.27	2.15	—	2.38	—
—	4.10		—	4.30	—	4.45	—	5.4
4.58	—		5.22	—	4.50	—	5.13	—
—	6.34		—	6.55	6.15	—	6.38	—
7.5	—		7.29	—	—	6.30	—	6.50
8.50	—		9.14	—	7.30	—	7.59	—
—	10.20		—	10.35	8.25	—	8.51	—
					—	8.55	—	9.14
					9.44	—	10.8	—

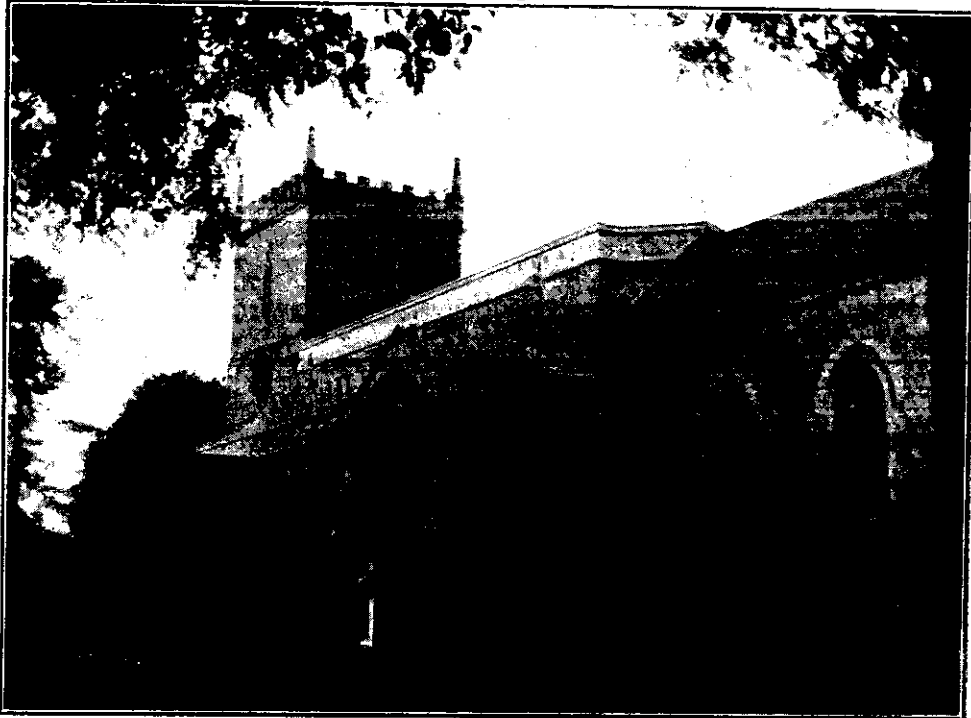
### SUNDAYS.

—	12.55	—	1.15	—	10.25	—	10.44
3.3	—	3.27	—	2.10	—	2.33	—
—	6.49	—	7.10	—	8.10	—	8.29
8.35	—	9.0	—	9.0	—	9.23	—

N.B. — All the G.N.R. trains stop at London Road (High Level Station) as well as at the Victoria Station



# EAST BRIDGFORD MAGAZINE.



*St. Peter's Church, East Bridgford.*

## *Services.*

### HOLY COMMUNION :—

On all SUNDAYS (except first in Month) and HOLY DAYS at 8 a.m.  
also after Morning Prayer on the Third Sunday in the Month.

On the first Sunday in the Month : Matins at 10 ; Choral Eucharist 10.45.

### MORNING AND EVENING PRAYER :—

Sundays at 10.45, and 6.30 p.m.

Weekdays, Wednesday and Friday at 10 ; and 6.30 p.m. daily.

### HOLY BAPTISM :—

First Sunday in month at 3, or at other Services on due notice.

### CHURCHING OF WOMEN :—

Wednesday and Friday at 10, or before any Service on due notice.

### SUNDAY SCHOOL AND CATECHISM :—

At 10 a.m. in the National School. Catechism in Church at 2.30.

THE FIFTH YEAR OF THE WAR.—Sunday, the 4th of August, was observed at East Bridgford and throughout the Country as the Anniversary of the Declaration of War on August 4th, 1914. There was a large congregation at the Celebration of the Holy Eucharist as a special act of intercession and thanksgiving through the precious death of Jesus Christ our Lord. At 3 p.m. a United Service was held in the Temperance Hall, which was well attended. The Rector much to his regret was unable to take part in it, under the Doctor's orders : but in his place, Mr. A. H. Clarke, who holds the Bishop's licence as a Lay Reader in the diocese, opened the service. Mr. John Wilkinson called attention to the thankfulness for God's blessings which this day called for. At the evening service in Church, at which Mr. Clarke officiated, the special service appointed for the occasion was used. The sum of £4 12s. 3d. was contributed during the day to the Red Cross and St. John's Ambulance Fund.

We cannot do better during this fifth year of the war than to keep before us the words of President Wilson, when he summoned the people of the United States to a day of public humiliation, prayer and fasting in May last,

“To pray Almighty God that he may forgive our sins and shortcomings  
“as a people and purify our hearts to see and love the truth, to accept and  
“defend all things that are just and right, and to purpose only those  
“righteous acts which are in conformity with His will ; beseeching him  
“that he will give victory to our armies as they fight for freedom, wisdom  
“to those who take counsel on our behalf in these days of dark struggle  
“and perplexity, and steadfastness to our people to make sacrifice to the  
“utmost in support of what is just and true, bringing us at last the  
“peace in which men's hearts can be at rest, because it is founded upon  
“mercy, justice, and goodwill.”

The Allotments Association has now acquired the Foss Close of 18 acres which will be divided into lots and let to members at Michaelmas. Thanks are due to the Bursar of Magdalen College for his readiness to meet the requirements of the land workers.

THE HARVEST.—Up to the date of writing the fine weather has been unbroken and the excellent harvest is in full progress. It is said to be the best we have had since 1868, and in the present conditions we have special cause for thankfulness. The Harvest Thanksgiving will be held on Thursday, September 26th, at 7.30 p.m., and on the following Sunday, September 29th, Michaelmas day. The Holy Eucharist will be celebrated at 8 a.m. on the Sunday.

The following notice has been received from the Ministry of Food respecting a National Collection of Blackberries :—

Owing to the partial failure of the fruit crop, the supply of jam throughout the country is insufficient. A very large quantity of jam is required for the Army and Navy, also to supply the needs of the civilian population.

The Ministry of Food, in conjunction with the Board of Education, is organising a National collection of blackberries, and the fruit thus collected will be sent to licensed manufacturers, who will make it into jam, which will be held at the disposal of the Government.

We earnestly appeal to owners and occupiers of land to allow all authorised gatherers of blackberries full access to the bushes growing on their land. We also appeal for help to holiday-makers and all persons willing to assist the Government in supplying this national necessity either by picking blackberries themselves or by organising parties for the purpose.

The Board of Education are permitting the schools to be used as depôts for the fruit collected, and the school teachers will be asked to supervise the children's collecting parties. The head teacher will pay for all fruit brought to the school and allocate fruit-picking areas in his district. It is hoped that responsible persons will come forward to assist the school master in the local organisation of this scheme, for it is essential that the fruit when collected shall be dispatched to the nearest jam factory, and the success of the scheme will largely depend on local organisation.

The fruit will be paid for at the rate of 3d. per lb., but as no unauthorised pickers will be recognised, all those willing to help should approach the local Head Teacher.

Blackberries will be received at the School, on Tuesdays, at 6 p.m. beginning September 10th.

All blackberries in the country are urgently needed for this purpose, and an order prohibiting their sale for any other purpose is about to be made, but of course people may gather them for their own use.

WOMEN'S INSTITUTE.—An interesting discussion on “the Ideal Cottage” formed the principal business at the meeting on August 13th. Amongst other correspondence, there was a request that all fruit stones and nut shells should be saved, as they are of great value in making gas masks.

Mrs. Matthew Millington kindly consented to store them.

At the close of the meeting, a performance of the Trial Scene from the Merchant of Venice was given by G.F.S. Members.

The programme for September 10th, is as follows : Lecture (non-political) on "The Woman's Vote" by Mrs. Manners. Exhibition of pickles, sauces, chutneys and ketchups.

Anyone wishing to join the Institute is reminded that she may attend one meeting as the guest of a member, and that if she joins during the last three months of the year, she will not be asked to pay the subscription again in January.

SERVICES IN SEPTEMBER.

Sept. 1st.	14th	Sunday after Trinity.	Matins at 10.	Holy Communion (Choral) 10.45.
" 8th.	15th	" "	Holy Communion at 8.	
" 15th.	16th	" "	Holy Communion at Mid-day.	
" 22nd.	17th.	" "	Holy Communion at 8.	
" 26th.	Thursday.	Harvest Thanksgiving 7.30 p.m.		
" 29th.		S. Michael and All Angels.	18th Sunday after Trinity.	Holy Communion at 8.
Oct. 6th.	19th	Sunday after Trinity.	Matins at 10.	Holy Communion (Choral) 10.45.

SUMMER TIME will end on Sunday, September 29th, when clocks will be put back one hour, and the services on that day will be held in accordance with normal "Greenwich" time. The alteration of clock-time is a somewhat odd plan to enable us to adapt our social and industrial habits to the changing seasons, but there are few who do not thoroughly appreciate the long light evenings, and the reversion to normal time will seem to bring winter upon us all at once.

EXTRACTS FROM PARISH REGISTERS.

BURIAL.

July 26th. Thomas Forrest Euerby, aged 77 years.

LIGHTING-UP TIMES for September, half-an-hour after sun-set, Greenwich time, corrected for East Bridgford and Summer-time :—

September 5th. 8.15 (New Moon); 13th, 7.54; 20th, 7.35 (Full Moon) 29th, 6.17.  
Lighted Windows must be obscured half an hour after these times.

Time Table for Sept. for East Bridgford of Trains to and from Nottingham.

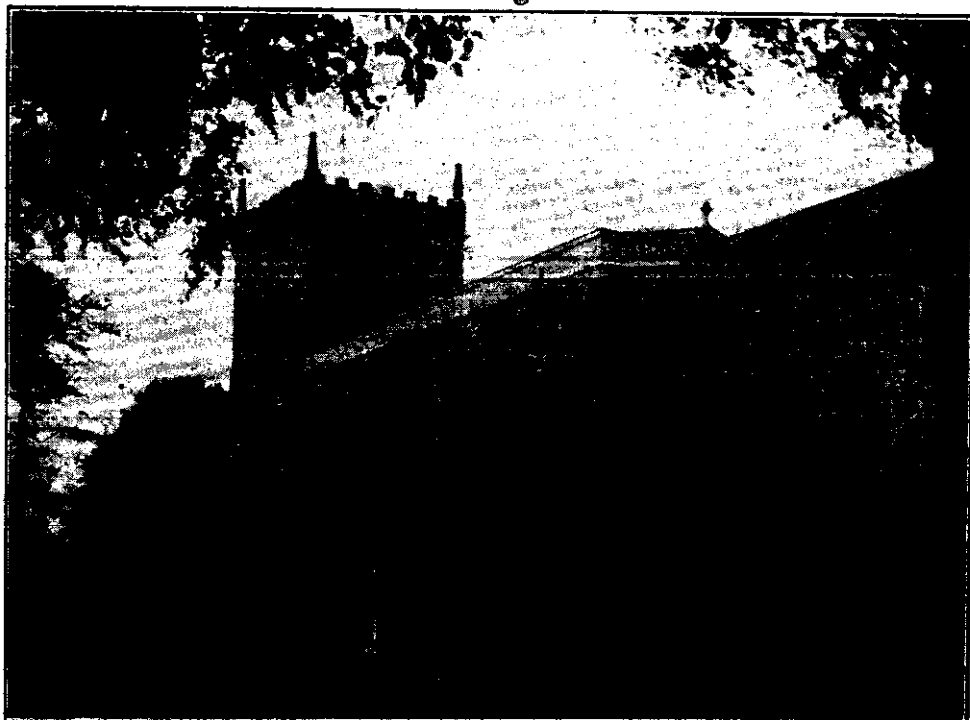
Bingham.	Leave		Arrive Nottingham		Leave Nottingham		Arrive	
	Bingham.	Lowdham.	G.N.R.	M.R.	G.N.R.	M.R.	Bingham.	Lowdham.
—	7.0	—	7.20	—	6.35	—	6.50	—
7.30	—	7.54	—	6.0	—	6.23	—	7.49
—	7.46	—	8.5	—	7.30	—	7.43	—
8.20	—	8.45	—	7.20	—	7.43	—	9.24
—	8.30	—	8.50	—	9.5	—	10.0	—
9.27	—	9.51	—	9.35	—	11.25	—	11.47
—	10.19	—	10.38	—	11.30	—	11.53	—
12.16	—	12.40	—	—	—	2.5	—	2.25
2.2	—	2.26	—	2.15	—	2.38	—	—
—	2.4	—	2.27	—	4.45	—	5.4	—
—	4.10	—	4.30	—	4.50	—	5.13	—
4.58	—	5.22	—	6.15	—	6.38	—	—
—	6.34	—	6.55	—	6.30	—	6.50	—
7.5	—	7.29	—	7.30	—	7.59	—	—
8.50	—	9.14	—	8.25	—	8.51	—	—
—	10.20	—	10.35	—	8.55	—	9.14	—
—	—	—	—	9.44	—	10.8	—	—

SUNDAYS.

—	12.55	—	1.15	—	10.25	—	10.44
3.3	—	3.27	—	2.10	—	2.33	—
—	6.49	—	7.10	—	8.10	—	8.29
8.35	—	9.0	—	9.0	—	9.23	—

N.B.—All the G.N.R trains stop at London Road (High Level Station) as well as at the Victoria Station

# EAST BRIDGFORD MAGAZINE.



*St. Peter's Church, East Bridgford.*

## *Services.*

### HOLY COMMUNION :—

On all SUNDAYS (except first in Month) and HOLY DAYS at 8 a.m.  
also after Morning Prayer on the Third Sunday in the Month.

On the first Sunday in the Month : Matins at 10 ; Choral Eucharist 10.45.

### MORNING AND EVENING PRAYER :—

Sundays at 10.45, and 6.30 p.m.

Weekdays, Wednesday and Friday at 10 ; and 6.30 p.m. daily.

### HOLY BAPTISM :—

First Sunday in month at 3, or at other Services on due notice.

### CHURCHING OF WOMEN :—

Wednesday and Friday at 10, or before any Service on due notice.

### SUNDAY SCHOOL AND CATECHISM :—

At 10 a.m. in the National School. Catechism in Church at 2.30.

**HARVEST THANKSGIVING SERVICES.**—On Thursday, Sept. 26th, our Festival was held at 7.30 p.m., when the Rev. F. C. Finch, Vicar of St. Alban's, Sneinton, preached. The offerings at this service were for the Church Army Huts for Soldiers, and £3 16s. has been sent to the Fund for maintaining this important and useful work on behalf of our lads in camp and field of battle. The Thanksgiving was continued on the following Sunday, the Feast of S. Michael and All Angels, when the offerings were given to the Sunday School Fund, and amounted to £3 7s 0d.

The break-up of the fine weather during September very seriously interfered with the completion of the Harvest, the nearly continuous succession of rainy days setting in when a good deal of corn was lying out and some uncut. North of the Trent, they have not been as fortunate as we have been here, and the later harvest in the North of England has suffered considerably more, but on the whole the Harvest is well above the average, and we must not be less thankful for God's bounties when we find them fall short of our expectations.

ONCE more we have to obscure the Church windows with curtains as a war-time precaution. But we must all with entire willingness conform to the requirements thought necessary by the responsible authorities, and submit readily to the economies enjoined, as our share in the burden laid upon our country. We can however thankfully acknowledge the brighter outlook in the war news, and especially the success of General Allenby in freeing the Holy Land from the dominion of the Turks. Let us pray that this great victory may prove to be the inauguration of brighter days for the land so sacred to us all.

We have now returned to "old time," that is, Greenwich Mean time, by the simple process of putting the Clocks back one hour. This was done with the Church clock on Sept. 29th, the day originally fixed, but an official statement, issued too late to give notice on the previous Sunday in Church of the change, appointed September 30th, so we enjoyed the benefit of the change on Sunday morning.

#### SERVICES IN OCTOBER.

Oct. 6th.	19th Sunday after Trinity.	Matins at 10.	Holy Communion (Choral) 10.45.
" 13th.	20th "	"	Holy Communion at 8.
" 18th.	S. Luke.	"	Holy Communion at 8.
" 20th.	21st "	"	Holy Communion at Mid-day.
" 27th.	22nd "	"	Holy Communion at 8.
" 28th.	St. Simon and St. Jude.	"	"
Nov. 1st.	All Saints' Day.	"	Holy Communion at 8.
" 3rd.	23rd Sunday after Trinity.	Matins at 10.	Holy Communion (Choral) 10.45.

The following statement of various contributions which have passed through the Rector's hands during the year ending Easter 1918 will be of interest to our readers.

#### Summary of amounts received by Collections in Church, Contributions, &c., and expended, during the year ending Easter, 1918.

	£	s	d
Church Expenses (Churchwardens' Accounts) ...	78	17	7
Alms to Sick and Poor ...	7	13	10
Diocesan Missionary Studentship, Ascension Day, 1917 ...	18	8	
Foreign Missions (S.P.G.) ...	18	10	3
Mission to Jews, Good Friday, 1918 ...	2	5	5
Home Missions (A.S.C.) ...	2	18	10
Hospitals, January 27th, 1918 ...	8	11	7
Diocesan Church Extension, 1917 ...	10	14	0
Clothing Club Subscription ...	4	2	0
Coal Club Subscriptions ...	15	6	0
Sunday School ...	9	3	2
Church Building Society ...	10	0	
National Society, Religious Education ...	1	16	10
Southwell House ...	17	11	
Red Cross and Ambulance Society, Jan. 6th, 1918... ..	7	0	0
Prisoners of War, April 22nd, 1917 ...	5	17	2
Church Restoration, Collections in Church ...	31	2	8
Easter Offerings, 1918, Diocesan Poor Clergy ...	12	11	0
	<u>£218</u>	<u>16</u>	<u>11</u>

A. D. HILL, Rector.

**EARLY CLOSING.**—The Grocers of East Bridgford have agreed to conform to the plan which has been adopted in most places, of earlier closing during the winter evenings. They will accordingly close at 6 p.m. each evening, except on Saturdays when they will close at 8 p.m. and on Wednesdays at 1 p.m. To begin on October 1st.

We feel sure their customers will be ready to help them to carry this out, by doing their business a little earlier.

#### EXTRACTS FROM PARISH REGISTERS.

##### BAPTISM.

Sept. 12th. Rose, daughter of Walter and Hilda Lee.

##### MARRIAGE.

Sept. 24th. Joseph Allwood and Sybil Pickford.

**LIGHTING-UP TIMES in October, for East Bridgford, half an-hour after sunset:—**

October 5th. 6.2 (New Moon); 13th. 5.43; 29th. 5.29 (Full Moon) 27th. 5.13.

Lighted Windows must be obscured half an hour after these times.

## Time Table for Oct. for East Bridgford of Trains to and from Nottingham.

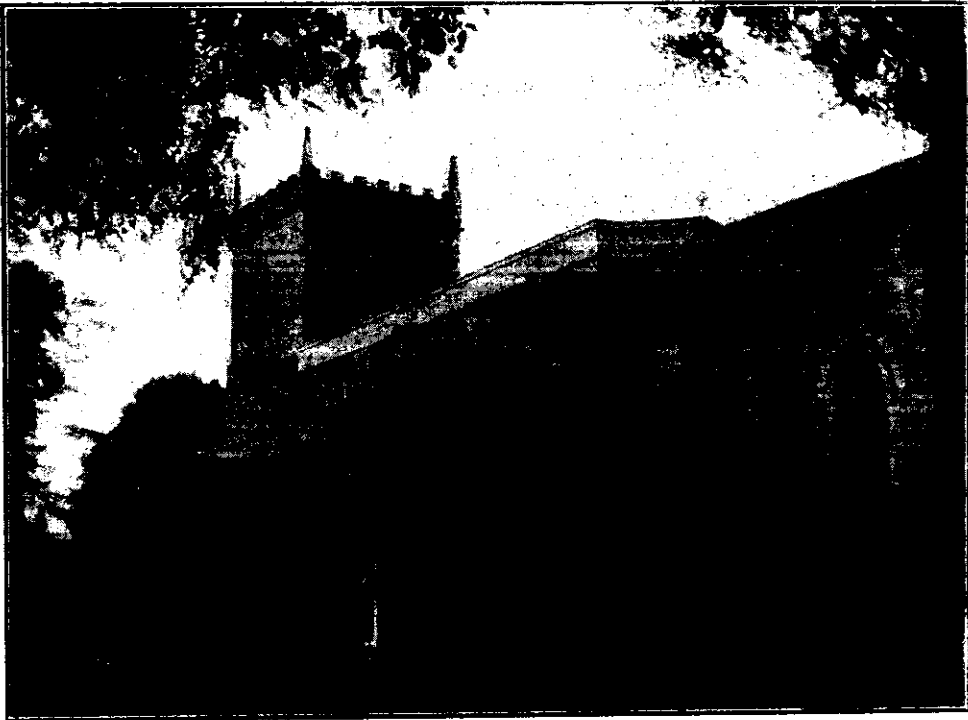
Leave		Arrive Nottingham		Leave Nottingham.		Arrive	
Bingham.	Lowdham.	G.N.R.	M.R.	G.N.R.	M.R.	Bingham.	Lowdham.
		Victoria.			Victoria.		
—	7.0	—	7.20	—	6.35	—	6.50
7.30	—	7.54	—	6.0	—	6.23	—
—	7.46	—	8.5	—	7.30	—	7.49
8.20	—	8.45	—	7.20	—	7.43	—
—	8.30	—	8.50	—	9.5	—	9.24
9.27	—	9.51	—	9.35	—	10.0	—
—	10.19	—	10.38	—	11.25	—	11.47
12.16	—	12.40	—	11.30	—	11.53	—
2.2	—	2.26	—	—	2.5	—	2.25
—	2.4	—	2.27	2.15	—	2.38	—
—	4.10	—	4.30	—	4.45	—	5.4
4.58	—	5.22	—	4.50	—	5.13	—
—	6.34	—	6.55	6.15	—	6.38	—
7.5	—	7.29	—	—	6.30	—	6.50
8.50	—	9.14	—	7.30	—	7.50	—
—	10.20	—	10.35	8.25	—	8.51	—
				—	8.55	—	9.14
				9.44	—	10.8	—

### SUNDAYS.

—	12.55	—	1.15	—	10.25	—	10.44
3.3	—	3.27	—	2.10	—	2.33	—
—	6.49	—	7.10	—	8.10	—	8.29
8.35	—	9.0	—	9.0	—	9.23	—

N.B. — All the G.N.R. trains stop at London Road (High Level Station) as well as at the Victoria Station

# EAST BRIDGFORD MAGAZINE.



*St. Peter's Church, East Bridgford.*

## Services.

### HOLY COMMUNION :—

On all SUNDAYS (except first in Month) and HOLY DAYS at 8 a.m.  
also after Morning Prayer on the Third Sunday in the Month.

On the first Sunday in the Month : Matins at 10 ; Choral Eucharist 10.45.

### MORNING AND EVENING PRAYER :—

Sundays at 10.45, and 6.30 p.m.

Weekdays, Wednesday and Friday at 10 ; and 6.30 p.m. daily.

### HOLY BAPTISM :—

First Sunday in month at 3, or at other Services on due notice.

### CHURCHING OF WOMEN :—

Wednesday and Friday at 10, or before any Service on due notice.

### SUNDAY SCHOOL AND CATECHISM :—

At 10 a.m. in the National School. Catechism in Church at 2.30.

THE WAR.—We are still without news of Albert Ellis, Bernard Simpkin and William Cooper, reported missing in March last. In one case only has the uncertainty been removed, and the following extract from *The Times* of October 22nd, will meet with the sympathy and interest of East Bridgford readers. "Captain Harold Augustus Hodges, Monmouth Regiment, attached South Lancashire Regiment, previously reported "missing believed killed," now officially reported "killed in action on March 24th, 1918, near Ham," was the fifth son of Mr. and Mrs. W. A. Hodges, of East Bridgford, Notts, who have six sons still serving. Captain Hodges received a commission in the 3rd Monmouth Regt. on August 27th, 1914, and went to France in the following February. He was wounded in the second battle of Ypres and again in 1917. He afterwards became attached to the South Lancashire Regt. Mr. Lowry, headmaster of Tonbridge School, writes:—"From the time when, as a boy of 14, he won his place in both the eleven and fifteen at Sedbergh (and Sedbergh football was then at its strongest), to the days of his captaincy of the Oxford Rugby team, he gained many athletic triumphs, which never for a moment altered his native modesty. As a leading boy, as undergraduate at Trinity, Oxford, as a young master, he acquired, even without seeking it, immense influence, and must have done untold good. His large charity and unselfishness, his simple, transparent devotion to all that was right and noble, could not but attract and uplift many who knew him, first, as one of the strongest international forwards of his day, and a hard-hitting batsman in the Notts County eleven. He was a fine baritone singer, a good French scholar and had a real devotion to English literature." His colonel wrote:—"We all miss your son very much. He was a most valuable officer and greatly liked by both officers and men." Letters from the chaplain, major and his subalterns testify to the regard and affection entertained for him by all ranks, and to his resourcefulness, bravery, and courage, which no danger could daunt. Captain Hodges was twice mentioned in dispatches."

#### CHURCH SERVICES IN NOVEMBER.

Nov. 1st.	All Saints' Day.	Holy Communion at 8.
" 3rd.	23rd Sunday after Trinity.	Mattins at 10. Holy Communion (Choral) 10.45.
" 10th.	24th "	Holy Communion at 8.
" 17th.	25th "	Holy Communion at Mid-day.
" 24th.	26th "	(Collect, Epistle and Gospel for 6th Sunday after Epiphany) Holy Communion at 8.
" 29th.	Friday.	Special Service of Intercession for Missions, 3.30 p.m.
" 30th.	Saturday.	S. Andrew, A. and M. Holy Communion at 8.
Dec. 1st.	1st Sunday in Advent.	Mattins at 10. Holy Communion (Choral) at 10.45.

On Sunday morning, October 27th, a Collection was made amounting to £1, on behalf of the National Society, founded in 1811 for the Promotion of Religious Education.

FOREIGN MISSIONS.—Sunday, November 24th, will be devoted to this important object, and Collections will be made for the Society for the Propagation of the Gospel in Foreign parts. It is one of the first duties of the Church to extend the Christian Faith not only among the heathen races, but also in our own Colonies in all parts of the world.

A Service of Intercession for Missions will be held on the eve of S. Andrew's Day, Friday, November 29th, at 3.30, to which all who are able to come at that hour are earnestly invited.

CHURCH FLAG.—With the small balance remaining from the Church Restoration Fund, £1 15s. 4d., and by Church box 18s. 6d., together with subscriptions already received of 30s., the Rector has procured a new Flag, a St. George's Cross, for the Church Tower. The sum of 13/6, is however still needed to defray the cost of it. We earnestly hope that the opportunity of using the new Flag for the first time, on the Declaration of Peace, may not be very far distant. It seems desirable to provide also, for use on suitable occasions, a Union Jack, which will cost from four to five pounds; and for which the Rector will be glad to receive further contributions, or the Box in Church may be made use of.

BLACKBERRIES have been gathered by the School children, and 270 lbs. have by this means been sent to the Jam Manufacturers, as requested by the Food Controller, for the purpose of utilizing the fruit for the national advantage. We are sorry that all parents did not let their children take part in the united effort which has been made by a great number of schools in country places with excellent results. Nearly 14 tons has been collected by the schools of Notts.

THE GARDENS AND ALLOTMENTS ASSOCIATION.—Annual General Meeting took place on Monday, October 14th, when the officers for the ensuing year were appointed as follows: Chairman, Mr. H. Goldston; Committee, Messrs. J. Lodder, G. Ellis, sen., F. O. Green, E. E. Coville and W. C. Millington; Hon. Secretary, Rev. A. D. Hill.

The Allotments Committee presented their Report which was adopted, and the Balance Sheet was presented and passed.

The next monthly Meeting will be held at 7.30 p.m. on Monday, 11th November, when Mr. Taborn will speak on "Co-operative Marketing." Monthly Meetings will be held at that hour on the second Monday in each month. Members are requested to bear this date in mind.

THE Members of the Midland Guild of Ringers will visit East Bridgford Church Tower on Saturday, November 16th, for a practice.



# EXTRACTS FROM PARISH REGISTERS.

## BAPTISM.

Oct. 21st. Barbara Mons, daughter of John Arthur James and Elizabeth Cloxton.

## MARRIAGE.

Oct. 24th, at St. Mary's Cathedral, Glasgow. Reginald John Hodges and Doris Rhona Buchanan.

## LIGHTING-UP TIMES in November, half-an-hour after sun-set :—

November 3rd, 4.59 (New Moon); 11th, 4.45; 18th, 4.33 (Full Moon); 25th, 4.22.

Lighted Windows must be obscured half an hour after these times

## Time Table for Oct, for East Bridgford of Trains to and from Nottingham.

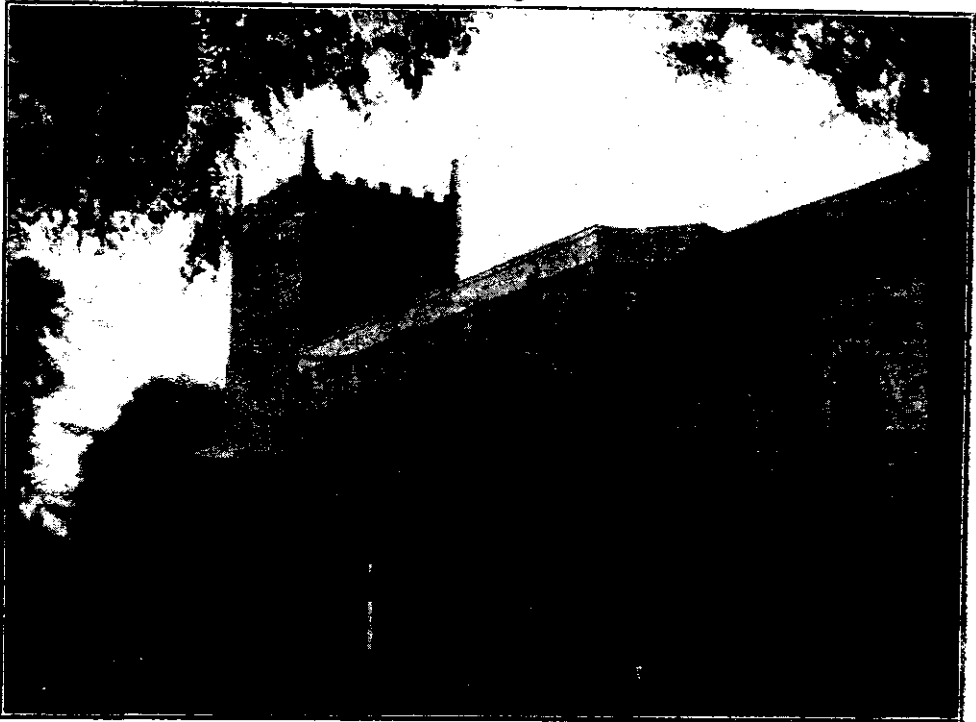
Bingham.	Leave		Arrive Nottingham		Leave Nottingham.		Arrive	
	Bingham.	Lowdham.	G.N.R. Victoria.	M.R.	G.N.R. Victoria.	M.R.	Bingham.	Lowdham.
—	7.0	—	7.20	—	6.35	—	6.50	—
7.30	—	7.54	—	6.0	—	6.23	—	—
—	7.46	—	8.5	—	7.30	—	7.49	—
8.20	—	8.45	—	7.20	—	7.43	—	—
—	8.30	—	8.50	—	9.5	—	9.24	—
9.27	—	9.51	—	9.35	—	10.0	—	—
—	10.19	—	10.38	—	11.25	—	11.47	—
12.16	—	12.40	—	11.30	—	11.53	—	—
2.2	—	2.26	—	—	2.5	—	2.25	—
—	2.4	—	2.27	2.15	—	2.38	—	—
—	4.10	—	4.30	—	4.45	—	5.4	—
4.58	—	5.22	—	4.50	—	5.13	—	—
—	6.34	—	6.55	6.15	—	6.38	—	—
7.5	—	7.29	—	—	6.30	—	6.50	—
8.50	—	9.14	—	7.30	—	7.59	—	—
—	10.20	—	10.35	8.25	—	8.51	—	—
—	—	—	—	—	8.55	—	9.14	—
—	—	—	—	9.44	—	10.8	—	—

## SUNDAYS.

—	12.55	—	1.15	—	10.25	—	10.44
3.3	—	3.27	—	2.10	—	2.33	—
—	6.49	—	7.10	—	8.10	—	8.29
8.35	—	9.0	—	9.0	—	9.23	—

N.B.—All the G.N.R. trains stop at London Road (High Level Station) as well as at the Victoria Station

# EAST BRIDGFORD MAGAZINE.



*St. Peter's Church, East Bridgford.*

## *Services.*

### HOLY COMMUNION :—

On all SUNDAYS (except first in Month) and HOLY DAYS at 8 a.m.  
also after Morning Prayer on the Third Sunday in the Month.

On the first Sunday in the Month : Matins at 10 ; Choral Eucharist 10.45.

### MORNING AND EVENING PRAYER :—

Sundays at 10.45, and 6.30 p.m.

Weekdays, Wednesday and Friday at 10 ; and 6.30 p.m. daily.

### HOLY BAPTISM :—

First Sunday in month at 3, or at other Services on due notice.

### CHURCHING OF WOMEN :—

Wednesday and Friday at 10, or before any Service on due notice.

### SUNDAY SCHOOL AND CATECHISM :—

At 10 a.m. in the National School. Catechism in Church at 2.30.

The great event of the past month has been the ceasing of hostilities at 11 a.m. on November 11th. The news of the signing of the Armistice reached us on Monday morning, so that we were aware of what had happened at the moment the last shot was being fired. The terms of the Armistice are of course purely naval and military, but it is the first of the stages on the way to a Peace that shall be enduring and final.

It was fitting that we should at once give humble and reverent thanks to Almighty God for this great deliverance, and on Tuesday at 1 p.m., a service was held in Church with that object, attended by a large congregation. A Service was also held in the Wesleyan Chapel on Monday evening. The Village blossomed out with flags as soon as the news was known, and the new St. George's ensign was hoisted on the Church tower and the bells rang out for the Service of Thanksgiving.

The Services on the following Sunday were also marked by prayers and thanksgivings specially appointed to help the congregation to direct their thoughts to God, who giveth us the Victory, as well as to remind us of the sadness that the four years and a quarter of War has brought to so many homes, whose bereavement cannot be forgotten in the midst of a nation's joy, for it has touched us all.

The lighting restrictions have now been removed, and we are no longer obliged to keep the windows obscured. We are glad to hear the Church clock strike at night, and to have no restrictions upon the Church bells. But we must still exercise self restraint and economy, and still continue to help the country by War Savings, and to support Red Cross Funds and War Charities to the utmost of our ability.

On Monday, November 11th, the Allotments and Gardens Association were addressed by Rev. D. F. Wright and Mr. Ross in behalf of the Food Control, on the subject of Market co-operation among small growers. A vote of thanks was accorded to the speakers.

**THE SCHOOL.**—A holiday was given on Tuesday, Nov. 12th, in response to the following letter addressed by Major General Boyd, Commanding the North Midland division, to the Lord Lieutenant of the County:—

"In the name of the Officers, Non-Commissioned Officers and Men of the 46th North Midland Division, I would be grateful if you would grant the boys and girls in your County a holiday in honour of the storming of the St. Quentin Canal near Bellenglise on September 29th, 1918, when the Hindenburg line was broken, and over 4,000 prisoners and 70 guns taken; also in honour of the Battle of Ramicourt three days later on the 3rd October, when the Division attacked again on a wide front, breaking the Beaurevoir-Fonsomme Line, killing and wounding large numbers of the enemy, and capturing over 2000 prisoners."

"The 46th Division is the original North Midland Territorial Division which was raised in time of Peace for Home Defence in the Counties of Notts., Derbyshire, Lincolnshire, Rutland, Leicestershire, and Staffordshire. At the outbreak of War the whole of the units accepted the liability for Foreign Service and the Division has now been in France for more than 3½ years, and has seen much heavy fighting and suffered severe casualties. Included in the Division is a Notts. and Derby Brigade, consisting of two Notts. and two Derbyshire Battalions. Of the former the 7th Sherwood Foresters (Robin Hoods) is the City of Nottingham Battalion, and was not present with the Division on this occasion, but the County Battalion, the 8th Sherwood Foresters, took part in the fighting and fully maintained the credit of the County."

The School is closed for a fortnight.

The attendance of the children has been small, owing to the prevalence of influenza. Parents may be assured that the school, which is not crowded, and is well warmed, ventilated and disinfected, is the safest place for healthy children. On any indications of colds, however, parents should exercise their discretion and keep their children warm in bed, and give information to the school master.

No week day evening services will be held this Advent on account of the necessity for economizing oil and fuel.

ON CHRISTMAS DAY, Wednesday, Dec. 25th, there will be celebrations of Holy Communion at 8 and Mid-day; Morning and Evening Prayer, 10.45 a.m. and 7 p.m.

The Christmas offerings will be given to the Funds of the Red Cross for the benefit of wounded soldiers.

#### CHURCH SERVICES IN DECEMBER.

Dec. 1st.	1st Sunday in Advent.	Mattins at 10.	Holy Communion (Choral) 10.45.
" 8th.	2nd " "	Holy Communion at 8.	
" 15th.	3rd " "	Holy Communion at Mid-day.	
" 22nd.	4th " "	Holy Communion at 8.	
" 25th.	CHRISTMAS DAY.	Holy Communion at 8 and Mid-day. Evensong 7.	
" 29th.	1st Sunday after Christmas.	Holy Communion at 8.	
1919			
Jan. 1st.	New Year's Day.	Circumcision of our Lord.	Holy Communion at 8.
" 5th.	2nd Sunday after Christmas.	Holy Communion at 8 and (Choral) 10.45.	
		Mattins at 10.	

In consequence of the great advance in the cost of printing, the Magazine for 1919 will only consist of the outside local sheet, and will not include the "Dawn of Day" which it has hitherto contained. Even if each single magazine had been sold at 2d., it would not have covered the actual cost during 1918, so we must ask our readers to be content with this arrangement until better times return. We hope all will continue to subscribe, and to take the single sheet at 1d.

**LIGHTING-UP TIMES for December, half-an-hour after sun-set :—**

December 3rd, 4.19 (New Moon) ; 11th, 4.15 ; 17th, 4.14 (Full Moon) ; 25th, 4.18.

**EXTRACTS FROM PARISH REGISTERS.**

**MARRIAGE.**

Nov. 10th. John Upton and Mary Hannah Morris.

**BURIALS.**

Oct. 30th. Annie Kirkland, aged 68 years.  
 ,, 31st. Ada Ellen Spray, aged 16 months.  
 Nov. 13th. *At Brompton Cemetery*, William George Fenemore, aged 33 years.

**Time Table for Dec. for East Bridgford of Trains to and from Nottingham.**

Bingham.	Leave		Arrive Nottingham		Leave Nottingham.		Arrive	
	Bingham.	Lowdham.	G.N.R. Victoria.	M.R.	G.N.R. Victoria.	M.R.	Bingham.	Lowdham.
—	7.0	—	—	7.20	—	6.35	—	6.50
7.30	—	—	7.54	—	6.0	—	6.23	—
—	7.46	—	—	8.5	—	7.30	—	7.49
8.20	—	—	8.45	—	7.20	—	7.43	—
—	8.30	—	—	8.50	—	9.5	—	9.24
9.27	—	—	9.51	—	9.35	—	10.0	—
—	10.19	—	—	10.38	—	11.25	—	11.47
12.16	—	—	12.40	—	11.30	—	11.53	—
<hr/>								
2.2	—	—	2.26	—	—	2.5	—	2.25
—	2.4	—	—	2.27	2.15	—	2.38	—
—	4.10	—	—	4.30	—	4.45	—	5.4
4.58	—	—	5.22	—	4.50	—	5.13	—
—	6.34	—	—	6.55	6.15	—	6.38	—
7.5	—	—	7.29	—	—	6.30	—	6.50
8.50	—	—	9.14	—	7.30	—	7.59	—
—	10.20	—	—	10.35	8.25	—	8.51	—
<hr/>								
					9.44	8.55	—	9.14
<hr/>								
					—	—	10.8	—

**SUNDAYS.**

—	12.55	—	1.15	—	10.25	—	10.44
3.3	—	3.27	—	2.10	—	2.33	—
—	6.49	—	7.10	—	8.10	—	8.29
8.35	—	9.0	—	9.0	—	9.23	—

N.B.—All the G.N.R. trains stop at London Road (High Level Station) as well as at the Victoria Station