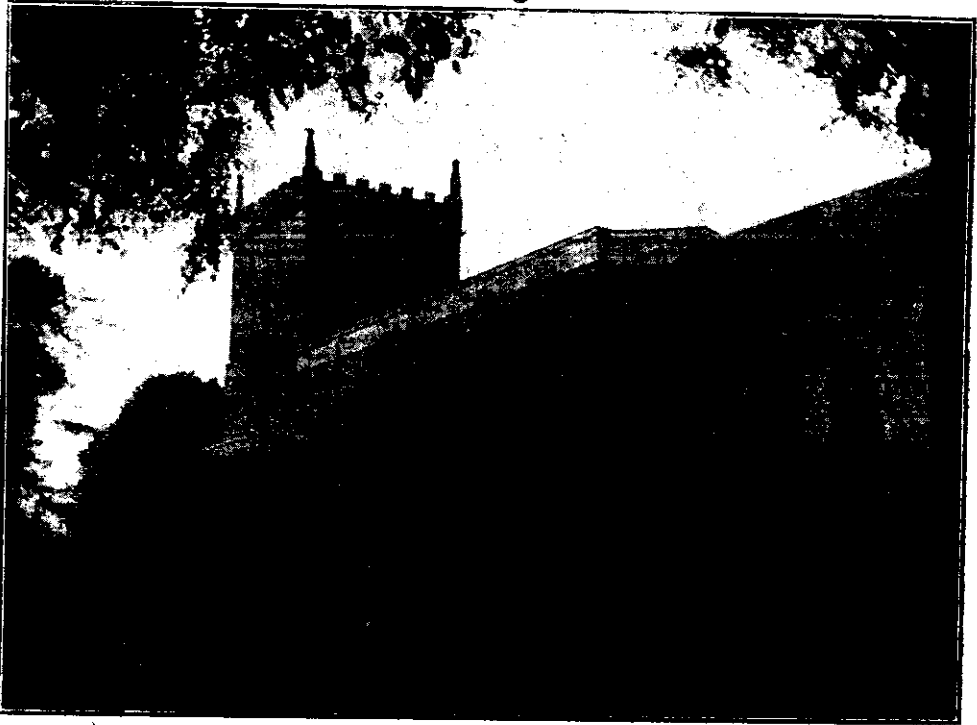


EAST BRIDGFORD MAGAZINE.



St. Peter's Church, East Bridgford.

Services.

HOLY COMMUNION :—

On all SUNDAYS (except first in Month) and HOLY DAYS at 8 a.m.
also after Morning Prayer on the Third Sunday in the Month.

On the first Sunday in the Month : Matins at 10 ; Choral Eucharist 10.45.

MORNING AND EVENING PRAYER :—

Sundays at 10.45, and 6.30 p.m.

Weekdays, Wednesday and Friday at 10 ; and 6.30 p.m. daily.

HOLY BAPTISM :—

First Sunday in month at 3, or at other Services on due notice.

CHURCHING OF WOMEN :—

Wednesday and Friday at 10, or before any Service on due notice.

SUNDAY SCHOOL AND CATECHISM :—

At 10 a.m. in the National School. Catechism in Church at 2.30.

It is with great thankfulness and gladness in our hearts at this Christmas season, that we offer our greetings to the subscribers to the East Bridgford Parish Magazine on entering the New Year 1919, and the 21st year of our Magazine. The cessation of hostilities and the prospect of complete and lasting peace in the world, after more than four years of the great war, has lightened a load from off us. These years have been a time of anxiety and difficulty for all. To many they have brought bitter pain and sorrow. But there can be none who does not feel the heart uplifted at the thought that England has shown that she has nobly done her duty in the great effort for the right. We welcome home our Soldiers and Sailors and all who have taken the hardest part in the struggle, with full hearts. Shall we not endeavour to recognize more openly the Hand of God in all our National life? He who was with us in all this bitter struggle will not retire and hide himself from man. This is the true Christmas lesson of God coming into a world of darkness and sin, and it is our part to welcome him not only with our lips, but in our hearts and lives, by more faithful service, more open gratitude. Let this be our firm resolve for the New Year, Anno Domini, 1919.

For the present, we must ask our readers to accept only the local sheet of the Magazine. The expense of supplying it has been for the last year, nearly double the amount received by the sale. We thank those who have made additional contributions: and if there are any who would still like to take the central pages of a Magazine, they can be supplied if application is made to the distributors during January, at the additional cost price.

The death of the Rev. William Edward Bury, for 37 years Rector of Screveton, at the age of 72 years, has taken from our neighbourhood, a well known and highly valued clergyman. From 1906 to 1916, he was Rural Dean of Bingham. The carefully tended Churchyard and reverent services in Screveton Church are familiar to many of us; while his dignified presence and simple hearted sincerity and devotion have always been a helpful inspiration to those who knew him.

WAR MEMORIAL.—On Monday, January 20th, a public Meeting will be summoned at 7.30 p.m. in the Temperance Hall, to consider in what way, a Memorial to all those of East Bridgford, who have given their lives in the Great War, may most suitably be provided.

The Secretary of the British and Foreign Bible Society announces that the following sums have been transmitted, Subscriptions 1918, £7 6s. 6d., Miss Upton's Box, £1 3s. 7d., Total £8 10s.

It has not been possible to arrange a Meeting this winter.

The egg collection for the wounded and returned prisoners in hospitals is still carried on by Miss Sharpe and is still needed during 1919.

The County Asylum, at Radcliffe, has recently been transformed into the Notts County War Hospital for the care, and if possible, the cure of soldiers who through stress of campaign or shell-shock, have become mentally impaired. The Chaplain appeals for contributions or gifts for their comforts, such as tobacco, books, games, woollen articles, etc., from all parts of the County, which will be gratefully received by the Hon Treasurer, Mrs. W. Roberts, The Cliff House, Radcliffe-on-Trent.

Our Christmas Offerings at the Services in Church were given to the Red Cross Funds; amounting to £6 2s. 0d.

At a Freemasons' Meeting, on December 19th, in Nottingham, the Duke of Portland referred to his recent visit to France and his inspection of the 1/8th Sherwood Foresters and said that General Boyd, commanding the North Midland Division, expressed himself in terms of the highest commendation of the whole division, and especially of the Notts. troops who fought under his command. General Boyd, said, "I have never met in the whole course of my experience better fighting men than come from Nottinghamshire and I believe that with a division of them it would be possible to march anywhere and do anything."

WOMEN'S INSTITUTE.—The members of the Institute are to be congratulated on winning three prizes at the exhibition held in London in October. They sent up 45 exhibits including pickles and chutney, cheese, apples, eggs, tinned fruit, cakes, needlework, toys, thrift articles and a collection of vegetables. The prizes gained were, 1st prize for war-cake with recipe, Mrs. Moor; 1st prize for knitted coat Madame Pelgrims; 3rd prize for sample of stitchery, Miss Fox.

The programme for the Meeting on December 31st includes an address by Mrs. Nevinson, the Women's Institute organizer and a sale of Christmas dishes.

ALLOTMENTS ASSOCIATION.—At the Monthly Meeting at 7.30 on Dec. 9th, ordering of seeds and potatoes for the coming season was considered and the Allotments Committee were able to report that the Foss Close had now been staked out, and was ready for occupation. On the following Monday eleven members drew lots for their holdings.

Members are reminded that the annual subscription is now due. It is hoped that the orders for seeds and potatoes will be sent off before the end of December.

The next meeting will be at 7.30 on Monday, January 13th.

HOSPITAL SUNDAY.—Collections in aid of the Hospital will be made at all Services in Church, on Sunday, January 26th.

CHURCH FLAG.—Contributions acknowledged £3 5s. 4d.; Mr. and Mrs. J. Upton 4s.; Mr. H. Ellis 5s.; Church Box £1 7s. 8d. Total £5 2s.

The cost of the new S. George's Cross was £4 16s. 9d., and it is hoped that additional contributions will enable us to provide also a new Union Jack.

Mr. W. Soles desires to express his thanks to the many friends who kindly contributed in his recent necessity.

The School has been closed since November 25th in consequence of the prevalence of Influenza in the Village. We are glad to say this has now abated and the Schools re-opened on December 30th.

LIGHTING-UP TIMES for January, half-an-hour after sun-set :—

January 2nd, 4.26 (New Moon); 9th, 4.35; 16th, 4.46 (Full Moon); 24th, 5 : 31st, 5.13 (New Moon).

EXTRACTS FROM PARISH REGISTERS.

BAPTISM.

Dec. 15th. Donald Alvey, son of Walter Henry and Agnes Hannah Savage.

MARRIAGE.

April 30th, 1918, At *Medicine Hut, B.C. Canada*, George Arthur Upton and Mona Velva Bender.

BURIALS.

Dec. 2nd. Blanche Marjorie Dexter, aged 16 years.
 " " Nellie Soles, aged 22 years.
 " 7th. Thomas Thornton, aged 5 years.
 " 6th. At *Lenlon*, Edith Topley, aged 29 years.
 " 21st. " Bertie Topley, aged 25 years

Time Table for Jan, for East Bridgford of Trains to and from Nottingham.

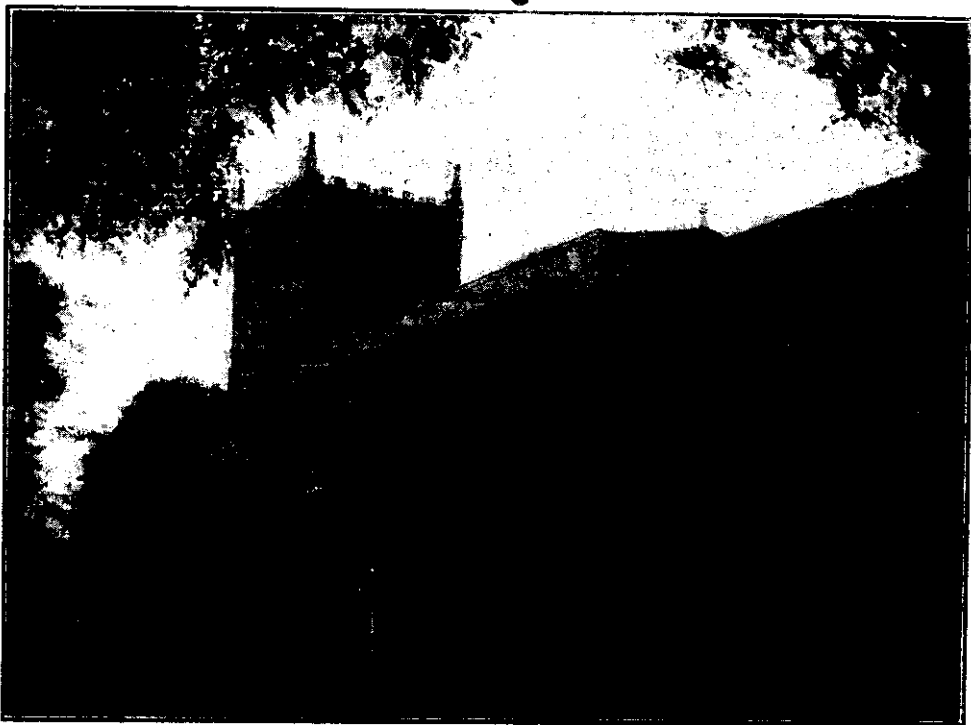
Leave		Arrive Nottingham		Leave Nottingham.		Arrive	
Bingham.	Lowdham.	G.N.R.	M.R.	G.N.R.	M.R.	Bingham.	Lowdham.
		Victoria.		Victoria.			
—	7.0	—	7.20	—	6.35	—	6.50
7.30	—	7.54	—	6.0	—	6.23	—
—	7.46	—	8.5	—	7.30	—	7.49
8.20	—	8.45	—	7.20	—	7.43	—
—	8.30	—	8.50	—	9.5	—	9.24
9.27	—	9.51	—	9.35	—	10.0	—
—	10.19	—	10.38	—	11.25	—	11.47
12.16	—	12.40	—	11.30	—	11.53	—
<hr/>							
2.2	—	2.26	—	—	2.5	—	2.25
—	2.4	—	2.27	2.15	—	2.38	—
—	4.10	—	4.30	—	4.45	—	5.4
4.58	—	5.22	—	4.50	—	5.13	—
—	6.34	—	6.55	6.15	—	6.38	—
7.5	—	7.29	—	—	6.30	—	6.50
8.50	—	9.14	—	7.30	—	7.59	—
—	10.20	—	10.35	8.25	—	8.51	—
				—	8.55	—	9.14
				9.44	—	10.8	—

SUNDAYS.

—	12.55	—	1.15	—	10.25	—	10.44
3.3	—	3.27	—	2.10	—	2.33	—
—	6.49	—	7.10	—	8.10	—	8.29
8.35	—	9.0	—	9.0	—	9.23	—

N.B.—All the G.N.R trains stop at London Road (High Level Station) as well as at the Victoria Station

EAST BRIDGFORD MAGAZINE.



St. Peter's Church, East Bridgford.

Services.

HOLY COMMUNION:—

On all SUNDAYS (except first in Month) and HOLY DAYS at 8 a.m.
also after Morning Prayer on the Third Sunday in the Month.

On the first Sunday in the Month : Matins at 10 ; Choral Eucharist 10.45.

MORNING AND EVENING PRAYER:—

Sundays at 10.45, and 6.30 p.m.

Weekdays, Wednesday and Friday at 10 ; and 6.30 p.m. daily.

HOLY BAPTISM:—

First Sunday in month at 3, or at other Services on due notice.

CHURCHING OF WOMEN:—

Wednesday and Friday at 10, or before any Service on due notice.

SUNDAY SCHOOL AND CATECHISM:—

At 10 a.m. in the National School. Catechism in Church at 2.30.

A PUBLIC MEETING was held on Monday, Jan. 20th, to consider in what way a Memorial to those who have fallen in the Great War might be suitably provided in our Village. Mr. J. W. Woodsend occupied the chair. It cannot be said to have brought about very definite results, but it seems necessary to keep clearly before our minds that the subject of the Meeting was a fitting Memorial to those who have died in the performance of their duty, which is not necessarily the same, or of so wide a scope, as an expression of our common thankfulness for the conclusion of peace, and gratitude to all those who have fought.

The definite suggestions placed before the meeting were (1) a Memorial Cross placed against the corner of the Churchyard wall at the cross roads (Miss Fox); (2) a house to be erected for a widow or relative of a soldier who would have a free home (Mr. A. Mason); (3) the improvement and beautifying of the Temperance Hall by a new facade and internal improvement (Mr. S. Richardson); (4) a Memorial Cross to be placed in the Churchyard, with the names of those who have died (The Rector); (5) a monument at Lockwood's Corner (Mr. E. Millington.) No resolution to adopt any one of these suggestions was taken at the Meeting.

Two conclusions seem to emerge; namely that it is very difficult to devise a plan which shall please everyone; and that an apparent unity gained by the suppression of real convictions would probably prove to be purchased at too high a cost.

Though it was beyond the scope and intention of the Meeting to consider the general commemoration of the coming peace and our thankfulness to God, it will probably be the desire of our own Church people that a permanent record for future generations, of the names of all sailors and soldiers who have gone out from East Bridgford to bear service in the Great War, should be placed in the Church, as the most suitable public place, not only of those who have fallen, but also of all who have survived and shared their dangers and sufferings. This was well expressed by Mr. Hodges in a letter that was read, not as a proposal to the Meeting, but as a clear expression of deep feeling on the subject. But the idea of marking out, in the common ground of our grave-yard, a Memorial which should visibly gather into one the distant and often unmarked graves of those of us who have fallen in foreign lands, has commended itself to many and especially to the mourners themselves; so that the Rector feels that there would be ample support to the proposal to erect a Memorial Cross in the Churchyard.

The following prayer for the Peace Conference is being used in Church.

Almighty God, who alone can dispose the hearts of men, and without whom their labour is in vain; vouchsafe to bless the Peace Conference assembled at this time in Paris; that with one accord and purpose they may reach their decisions for a just and enduring peace, to the glory of Thy name, the healing of strife among the nations and the promotion of Thy Kingdom upon earth. Through Jesus Christ our Lord. Amen.

NATIONAL EGG COLLECTION.—During the year 1918, 2,457 eggs were collected and forwarded from East Bridgford by Miss Sharpe. This is not quite so large a number as was provided in the previous year, but contributors are reminded that eggs are still urgently needed for returned invalided and wounded soldiers.

BLINDED SOLDIERS—The Choral Society again gave their services in aid of the "St. Dunstan" Funds, by singing Carols at Christmastide in East Bridgford and Gunthorpe, by which they collected £12 16s. 0d.

THE CHORAL SOCIETY announce a Concert in the Temperance Hall on Thursday, February 6th, when the first part of Mendelssohn's "Elijah" will be performed. The proceeds will be given to St. Dunstan's Blinded Soldiers' Institution.

Single copies of a Monthly Magazine are being supplied to a few who have specially asked for them at a 1d. a month, in addition to the cost of the local sheet.

ALLOTMENTS ASSOCIATION.—The supply of garden seeds has been received and distributed. At the next Monthly Meeting, Feb. 10th, it is hoped that Mr. T. F. Rowlett, of the Agricultural Organization Society, will be able to attend, for the purpose of advising the Association in the preparation for the first Government Audit which is now due.

A CONFIRMATION will be held by the Bishop of the Diocese in East Bridgford Church on March 17th. The Rector will be glad to receive names and to arrange for the preparation of candidates at once.

THE ANNUAL MEETING OF THE WOMEN'S INSTITUTE was held on Tuesday, Jan. 14th, at 2.30 p.m. The Yearly Report was read, and the Balance Sheet presented, showing a balance in hand of £8 17s. 3d.

The Committee for 1919 was elected as follows:—Mrs. Curtis, Miss Fox, Mrs. A. Mason, Mrs. Coville, Mrs. Dexter, Mrs. Field, Miss Clough, Mrs. Hill, Mrs. W. Richardson, Mrs. Cartwright.

Votes of thanks to Mr. Hodges for his generous help towards a portable copper and to Mrs. Clough for most kindly lending a room for the Soup Kitchen were passed unanimously.

Enjoyable recitations were given by the Misses Marjorie and Sylvia Mason and a capital Smelling Competition of household odours was arranged by Mrs. Field, Mrs. Rowley gaining the prize, a W. I. badge.

Subscriptions for 1919 were received and several new members enrolled. It is confidently hoped that there will be a large increase in membership during the next few months, so that the whole womanhood of East Bridgford may be banded together for mutual co-operation and help. All new members are assured of a warm welcome and any woman or girl wishing to join, is asked to send in her name to a member of the Committee, who will invite her to attend the next meeting of the Institute as her guest.

CHURCH FLAG.—Contributions acknowledged £5 2s. 0d.; Mr. Harvey 2s. 6d. Church Box 7s. Total February £5 11s. 6d.

THE WAR.—We have to record the death of Walter Pacey, 54th M.G.C. which took place in the Hospital at Alexandria on December 27th, 1918.

LIGHTING-UP TIMES for February, half-an-hour after sun-set :—

February 7th, 5.27 ; 14th, 5.40 (Full Moon); 21st, 5.53 ; 28th, 6.5 ;

CHURCH SERVICES.

- Feb. 2nd. Purification B.V.M. 4th Sunday after Epiphany. Holy Communion (Choral) 10.45.
 Mattins at 10.
 „ 9th. 2nd Sunday after Epiphany. Holy Communion at 8.
 „ 16th. Septuagesima. Holy Communion at Mid-day.
 „ 23rd. Sexagesima. Holy Communion at 8.
 Mar. 2nd. Quinquagesima. Mattins at 10. Holy Communion (Choral) 10.45.
 „ 5th. ASH WEDNESDAY Holy Communion at 8. Services 11 and 7.30.

EXTRACTS FROM PARISH REGISTERS.

BAPTISM.

Jan. 19th, 1919. Frank, son of John Willian and Sarah Mildred Euerby.

BURIALS.

Jan. 6th. Elizabeth Kirkland, aged 69 years.
 „ 21st. At Brodsworth, Yorks. Sarah Barker, aged 63

Time Table for Feb. for East Bridgford of Trains to and from Nottingham.

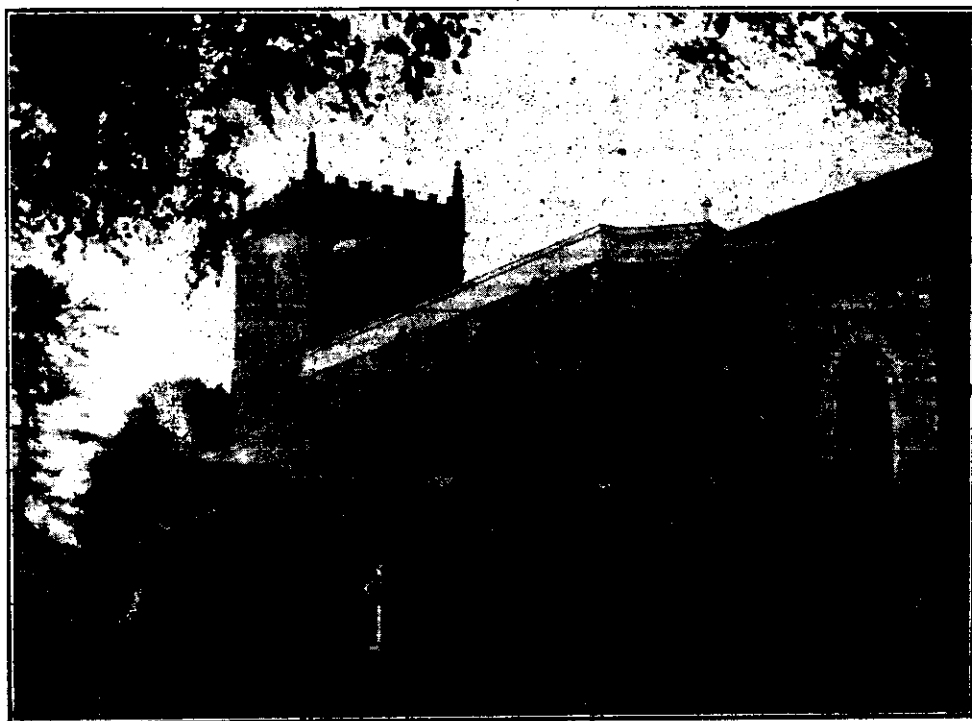
Leave		Arrive Nottingham		Leave Nottingham		Arrive	
Bingham.	Lowdham.	G.N.R. Victoria.	M.R.	G.N.R. Victoria.	M.R.	Bingham.	Lowdham.
—	7.0	—	7.20	—	6.35	—	6.50
7.30	—	7.54	—	6.0	—	6.23	—
—	7.46	—	8.5	—	7.30	—	7.49
8.20	—	8.45	—	7.20	—	7.43	—
—	8.30	—	8.50	—	9.5	—	9.24
9.27	—	9.51	—	9.35	—	10.0	—
—	10.19	—	10.38	—	11.25	—	11.47
12.16	—	12.40	—	11.30	—	11.53	—
<hr/>							
2.2	—	2.26	—	—	2.5	—	2.25
—	2.4	—	2.27	2.15	—	2.38	—
—	4.10	—	4.30	—	4.45	—	5.4
4.58	—	5.22	—	4.50	—	5.13	—
—	6.34	—	6.55	6.15	—	6.38	—
7.5	—	7.29	—	—	6.30	—	6.50
8.50	—	9.14	—	7.30	—	7.59	—
—	10.20	—	10.35	8.25	—	8.51	—
				—	8.55	—	9.14
				9.44	—	10.8	—

SUNDAYS.

—	12.55	—	1.15	—	10.25	—	10.44
3.3	—	3.27	—	2.10	—	2.33	—
—	6.49	—	7.10	—	8.10	—	8.29
8.35	—	9.0	—	9.0	—	9.23	—

N.B.—All the G.N.R. trains stop at London Road (High Level Station) as well as at the Victoria Station

EAST BRIDGFORD MAGAZINE.



St. Peter's Church, East Bridgford.

Services.

HOLY COMMUNION :—

On all SUNDAYS (except first in Month) and HOLY DAYS at 8 a.m.
also after Morning Prayer on the Third Sunday in the Month.

On the first Sunday in the Month : Matins at 10 ; Choral Eucharist 10.45.

MORNING AND EVENING PRAYER :—

Sundays at 10.45, and 6.30 p.m.

Weekdays, Wednesday and Friday at 10 ; and 6.30 p.m. daily.

HOLY BAPTISM :—

First Sunday in month at 3, or at other Services on due notice.

CHURCHING OF WOMEN :—

Wednesday and Friday at 10, or before any Service on due notice.

SUNDAY SCHOOL AND CATECHISM :—

At 10 a.m. in the National School. Catechism in Church at 2.30.

The weather during the last month has brought some extremes of cold and discomfort. Snow fell on January 28th, and on February 17th, which soon thawed and made the roads very unpleasant, and the thermometer on the night of February 8th fell to at least 20 degrees below freezing point. The river rose considerably after the melting of the snow and on February 21st covered the road from the Wharf to Gunthorpe Bridge. Why, one is compelled to ask, does not the County Council make a raised footpath along this low-lying short stretch of road, as they have done between Lowdham and Gunthorpe? It would be an immense advantage to this parish and would provide work of a really useful character.

THE CHORAL SOCIETY provided an excellent concert on February 6th, in which the first part consisted of selections from Mendelssohn's "Elijah." The second part began with the Hallelujah Chorus, and contained songs by Madame Searson, Miss Goodwin, Mr. Glover and Mr. Fisher, the artistes who had taken the principal parts in the Oratorio. After expenses were paid, £7 was sent from the proceeds of the concert to the St. Dunstan Hostel for the Blind.

HORTICULTURAL SOCIETY.—A general meeting of members of the Society was held on January 31st, at which it was unanimously agreed to hold the Flower Show this summer, after an intermission of four years on account of the War.

The officers of the Society were appointed:—President, Rev. A. D. Hill. Treasurer, Mr. J. W. Woodsend. Secretary, Mr. H. Goldston; and a Committee was formed.

The date of the Flower Show was fixed, as usual, for Tuesday in Feast Week, July 1st, and it was decided that Sports should be arranged to be held on that day.

A revised schedule of exhibits will be issued in good time, and the co-operation of the Women's Institute has been offered and accepted for arranging the Flower Show.

The Society has no funds in hand, and is therefore undertaking its operations again, in the confident expectation of the continuation of the support which has previously been given by its subscribers and inhabitants of East Bridgford, in view of the difficulties ahead, owing to the increased cost of everything at the present time.

LENT.—March 5th, is Ash Wednesday, the first day of Lent. There will be Services at 8, 11 and 7.30. Each Wednesday during Lent there will be a Service at 7.30 p.m., when the "Story of the Cross" will be sung and a short Special Address will be given. Lent is one of God's calls to us. Even the busiest among us might contrive that, during Lent, he will be oftener in God's house, and say "I will hearken what the Lord God will say concerning me." The effort to break into ones ordinary habits, to do something for God, is a good discipline and will make the heart more willing to follow our Lord and Master. To those who make this season a time of recollectedness, it will and must be a time of profit.

EASTER DAY falls on April 20th. It will not occur as late as this again until 1924.

MOTHERS' UNION.—The Members are arranging to meet at the Rectory, 2.30 to 4.30, on Thursdays up to Easter, for rest and recreation. They will be glad to welcome any more members who would like to come.

WAR LOAN.—War Certificates costing 15/6, of the value of £1, may still be obtained from the War Savings Association, Mr. A. Mason.

The School War Savings Branch of the Association has now received savings from children in the School, amounting to £152. The War has still to be paid for, and this method of using your own Savings for the purpose, which is both patriotic and advantageous to the contributor, should be fully used.

BELGIAN REFUGEES.—Madame Pelgrinis and her family, after having spent more than four years among us in East Bridgford, have at length been able to return to their own home in Antwerp. They left with many pleasant recollections of their stay in England and with our sincere hope that they will soon find their unfortunate country recovering itself from the calamities that have befallen it in the war.

A CONFIRMATION will be held in East Bridgford Church on Monday, March 17th, at 3 p.m., by the Bishop of the Diocese.

No one who studies carefully the Scriptural account of the first confirmation can doubt that God, who always gives Himself in a divine longing to help his children, does offer us, in Confirmation, a real strengthening of our wills through the Holy Spirit. "Prove me now herewith," He seems to say in the words of the Prophet Malachi, "if I will not open you the windows of heaven, and pour you out a blessing, that there shall not be room enough to receive it." Such a gift, all of us who are at all conscious of our weakness and infirmity, must surely desire.

The Service is one which as many as possible should endeavour to attend. It will remind those who are older of their own Confirmation; the presence and the prayers of others will help those who are being Confirmed.

ALLOTMENTS ASSOCIATION.—Mr. Sidney G. Wells, of the Food Production Department of the Board of Agriculture, arranged to give a demonstration of fruit pruning on Saturday, March 1st.

The next Monthly Meeting will be held on Thursday, March 13th, 7.30 p.m. (instead of on the 2nd Monday in the month) when a lecture on potatoes and soils will be given by Mr. W. V. Hill.

WOMEN'S INSTITUTE.—The Monthly Meeting will be held on Tuesday, March 11th, when Mr. R. F. Hearnshaw will give a lecture on Poultry Keeping. Gentlemen will be admitted to this Meeting.

At the meeting on February 11th, an exhibition of economical sweets and confectionery was arranged; and Mr. W. Lander gave a very useful demonstration of Boot Repairing.

SUMMER TIME.—The Home Secretary gives notice that "Summer Time" will be brought into force this year on the morning of Sunday, March 30th, and will continue until the night of Sunday-Monday, September 28th-29th. Clocks must therefore be put back on the night of Saturday, March 29th, and the time of sunrise on the following Sunday morning will be 5.31, instead of 6.31.

CHURCH SERVICES.

Mar. 2nd. Quinquagesima. Mattins at 10. Holy Communion 10.45.
 „ 5th. ASH WEDNESDAY Holy Communion at 8. Services 11 and 7.30.
 „ 9th. 1st Sunday in Lent. Holy Communion at 8.
 „ 16th. 2nd Sunday in Lent. Holy Communion at Mid-day.
 „ 23rd. 3rd Sunday in Lent. Holy Communion at 8.
 „ 25th. Annunciation of the Blessed Virgin Mary. Holy Communion at 8.
 „ 30th. 4th Sunday in Lent. Holy Communion at 8.
 April 6th. 5th Sunday in Lent. Holy Communion at midday (not choral).

EXTRACTS FROM PARISH REGISTERS.

BAPTISMS.

Jan. 19th. Frank, son of John William and Sarah Mildred Dickinson.
 „ 20th. George Robert, son of Alfred and Emily Lavinia Knight.
 Feb. 3rd. Robert Gervase, son of Robert Noel and Grizelda Sarah Woodsend.
 „ 5th. Albert, son of James and Ellen Lodder.

MARRIAGE.

Feb. 11th. William Leader and Dora Johanna Raynor.

BURIAL.

Feb. 10th. Rebecca Pepper, aged 62 years.

LIGHTING-UP TIMES for March, half-an-hour after sun-set :—

March 2nd, 6.2 (New Moon); 9th, 6.21; 16th, 6.37 (Full Moon); 24th, 6.51; 31st, 6.1 (New Moon); (Summer time).

Time Table for Feb, for East Bridgford of Trains to and from Nottingham.

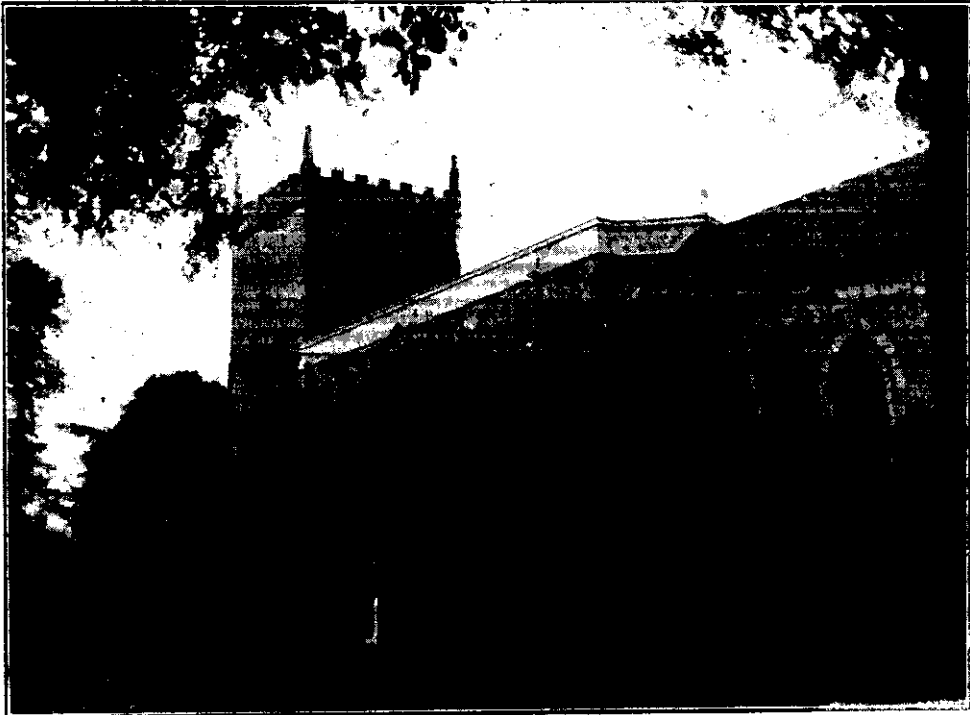
	Leave		Arrive Nottingham.		Leave Nottingham.		Arrive	
	Bingham.	Lowdham.	G.N.R. Victoria.	M.R.	G.N.R. Victoria.	M.R.	Bingham.	Lowdham.
—	7.0	—	7.20	—	6.35	—	6.50	—
7.30	—	7.54	—	6.0	—	6.23	—	7.49
—	7.46	—	8.5	—	7.30	—	7.43	—
8.20	—	8.45	—	7.20	—	9.5	—	9.24
—	8.30	—	8.50	—	9.35	—	10.0	—
9.27	—	9.51	—	—	11.25	—	—	11.47
—	10.19	—	10.38	—	—	—	—	—
12.16	—	12.40	—	11.30	—	11.53	—	—
<hr/>								
2.2	—	2.26	—	—	2.5	—	2.25	—
—	2.4	—	2.27	2.15	—	2.38	—	—
—	4.10	—	4.30	—	4.45	—	5.4	—
4.58	—	5.22	—	4.50	—	5.13	—	—
—	6.34	—	6.55	6.15	—	6.38	—	—
7.5	—	7.29	—	—	6.30	—	6.50	—
8.50	—	9.14	—	7.30	—	7.59	—	—
—	10.20	—	10.35	—	8.25	—	8.51	—
—	—	—	—	—	8.55	—	—	9.14
—	—	—	—	9.44	—	10.8	—	—

SUNDAYS.

—	12.55	—	1.15	—	10.25	—	10.44
3.3	—	3.27	—	2.10	—	2.33	—
—	6.49	—	7.10	—	8.10	—	8.29
8.35	—	9.0	—	9.0	—	9.23	—

N.B.— All the G.N.R. trains stop at London Road (High Level Station) as well as at the Victoria Station

EAST BRIDGFORD MAGAZINE.



St. Peter's Church, East Bridgford.

Services.

HOLY COMMUNION:—

On all SUNDAYS (except first in Month) and HOLY DAYS at 8 a.m.
also after Morning Prayer on the Third Sunday in the Month.

On the first Sunday in the Month : Matins at 10 ; Choral Eucharist 10.45.

MORNING AND EVENING PRAYER:—

Sundays at 10.45, and 6.30 p.m.

Weekdays, Wednesday and Friday at 10 ; and 6.30 p.m. daily.

HOLY BAPTISM:—

- First Sunday in month at 3, or at other Services on due notice.

CHURCHING OF WOMEN:—

Wednesday and Friday at 10, or before any Service on due notice.

SUNDAY SCHOOL AND CATECHISM:—

At 10 a.m. in the National School. Catechism in Church at 2.30.

March has been a month of wet, cold and stormy weather. There was a slight fall of snow on the 21st and 22nd, and on two occasions the floods rose so as to render the road to Gunthorpe Bridge impassable.

LENT.—On Ash Wednesday, the Collection of 13/- was sent to Southwell House, Nottingham.

On each Wednesday during Lent, a short Service of Prayer, with the sung "Story of the Cross" and a Sermon, the course being based on the "Duty towards God" is held at 7.30 p.m.

On Good Friday, April 18th, the Services will be at 8, 11 and in the evening with hymns and an address at 7.30. Collections will be made for Missionary work amongst Jews.

EASTER DAY.—The Celebrations of the Holy Communion on the great festival will be at 7, 8 a.m. and at Midday. Morning prayer at 10.45 and Evening at 6.30.

An appeal is being made by the Church Central Board of Finance for the foundation of a Central Church Fund, for the following main purposes (1) a living wage for the Clergy in poor parishes. (2) The training for the Ministry of the Church, especially at this time of the large number of candidates who have been serving in the Army and Navy. (3) An adequate system of pensions.

In this Diocese it has been decided to make this a Diocesan contribution to be added to the Diocesan budget this year, instead of making a separate collection, and it will therefore be added to the apportionment which our own Parish is asked to contribute to the Diocesan Fund. The Church Council has therefore agreed to give the Easter Offerings for this important part of Church work as well as the usual collection on "Diocesan Sunday," May 25th.

THANKSGIVING SERVICE.—On the first Sunday after Easter, April 27th, after Evensong (which will be at 6 o'clock on this day,) a special Thanksgiving Service will be held in the Parish Church at 7 p.m. The East Bridgford Choral Society on this occasion will sing Mendelssohn's *Hymn of Praise*, as an expression of our thoughts of thankfulness through the noble art of Music, and all are invited to join by their attendance at this service in an act of Thanksgiving to Almighty God for His mercies in bringing the War to a conclusion.

The Easter Vestry Meeting for the election of Churchwardens and Side-men will be held on Tuesday, April 22nd, at 7 p.m. in the School. The erection of a Memorial Cross in the Churchyard to those who have fallen in the War will be considered. Immediately after this public meeting, a meeting will be held for the presentation of the Church accounts and other Church business.

A CONFIRMATION was held in East Bridgford Church on Monday, March 17th, 3 p.m. The day was fortunately fine and a large congregation attended the impressive service held by the Bishop of the Diocese. There were 28 candidates, 16 from this parish and 12 from Radcliffe and Thoroton parishes.

A PARISH MEETING was held on March 17th, for the election of the Parish Council. No election was held during the War, and the retiring Council has therefore been in office since the year 1913. Mr. H. Goldston was appointed Chairman of the meeting, and the following were elected to hold office for three years: viz., Rev. A. D. Hill, Messrs. E. Fox, E. E. Coville, J. Lodder, F. O. Green, A. Smith, J. Wilkinson, W. Ellis, A. W. Mason, W. Baguley and F. Collishaw.

ALLOTMENTS ASSOCIATION.—A most interesting demonstration of fruit pruning was given on Saturday, March 1st, under the arrangements of the Agricultural Executive Committee for Notts by Mr. Sidney P. Wells, who proved a very attractive and capable demonstrator.

The monthly meeting was held on Thursday, March 13th, when Mr. W. V. Hill, who was expected to give a lecture on Potatoes and Soils, was unfortunately prevented from being present, as he was held up at Lowdham by the floods. He kindly promises to come on Monday, April 14th, the date of the next monthly meeting.

WOMEN'S INSTITUTE.—The monthly meeting takes place on Tuesday, April 8th, when a demonstration and lecture on Economical dress cutting will be given by Mrs. H. Allan Hawkey (London) and an exhibition will be held of members' work of knitting, crochet and embroidery.

At the last meeting held on March 11th, Mr. R. F. Hearnshaw gave a lecture on Poultry keeping to an appreciative audience not only of members, but also of men, who on this occasion were invited.

THE BAND OF HOPE gave a Concert on March 4th, which gave great pleasure with its lively and varied programme. A fancy dress competition was held in which the following won prizes.—1st, Vera Boyce (Bride cake), Harry Soles (Bedouin Arab); 2nd, Doris Cragg (Victory), Jack Cloxton (wounded soldier); 3rd, Doris Green (Fairy), Cyril Cox (Golliwog). £7 was given to the Nursing Funds from the proceeds of the concert.

CRICKET CLUB.—A general meeting was held in the King Edward Club on March 10th, at which Mr. Coville was in the chair. The following officers of the Clubs were elected. President, Mr. R. W. Swain; Treasurer, Rev. A. D. Hill; Secretary, W. H. Foster; *Captain*, W. H. Foster; *Vice-Captain*, C. Wilkinson; *Committee*: F. O. Green, R. Cleal, J. Wilkinson, R. Richardson, A. Smith, J. Dexter.

A Whist Drive and Dance has been arranged to take place on April 24th, in aid of the Funds of the Cricket Club.

CHURCH SERVICES.

April 2nd. Wednesday 7.30.
 .. 5th. 5th Sunday in Lent. Holy Communion at mid-day.
 .. 9th. Wednesday 7.30.
 .. 13th. 6th Sunday in Lent. Palm Sunday. Holy Communion at 8.
 .. 15th. Wednesday 7.30.
 .. 18th. GOOD FRIDAY. 8.11, 7.30.
 .. 20th. EASTER DAY. Holy Communion at 7, 8 (Choral) and Mid-day.
 .. 25th. S. Mark. Holy Communion at 8
 .. 27th. 1st Sunday after Easter. Holy Communion at 8. Evensong at 3. Mendelssohn's
 Hymn of Praise, Thanksgiving Service at 7.

EXTRACTS FROM PARISH REGISTERS.

BAPTISM.

March 2nd. Edith Alice, daughter of George and Sarah Jane Ellis.

BURIALS.

March 6th. George Straw, aged 64 years.
 .. 8th. Philip Newcombe, aged 84 years.

LIGHTING-UP TIMES for April, corrected for East Bridgford, Summer-time
 (four minutes being added for west longitude, and from one to four minutes
 for north latitude).

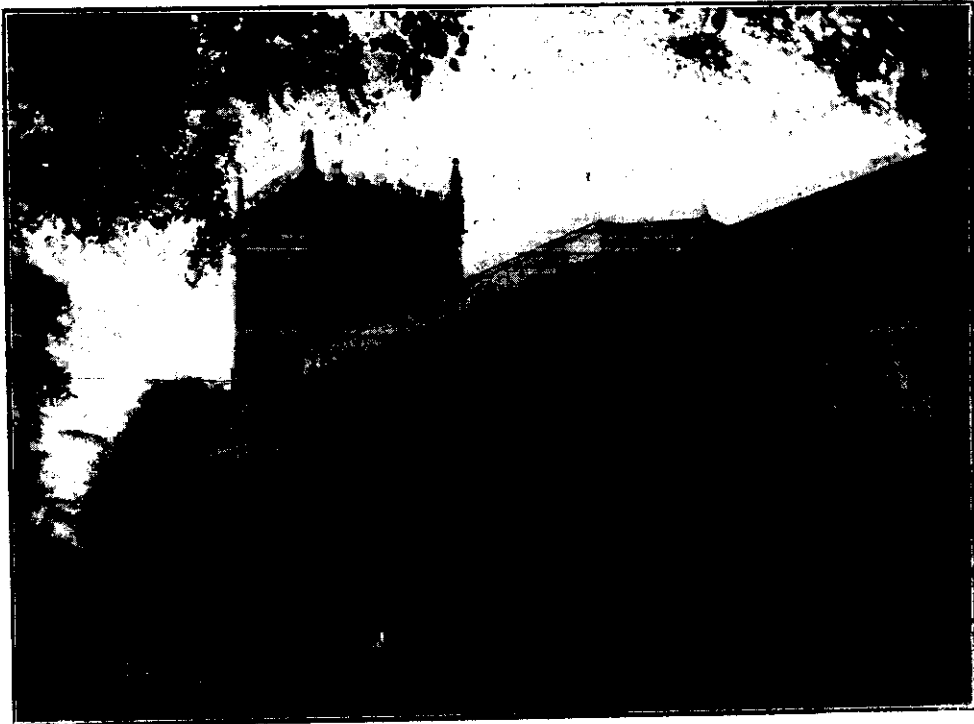
April 7th, 8.15 : 15th, 8.30 (Full Moon); 23rd, 8.45; 30th, 8.50 (New Moon).

Time Table for Feb. for East Bridgford of Trains to and from Nottingham.

Leave		Arrive Nottingham		Leave Nottingham.		Arrive Bingham. Lowdham.	
		G.N.R.	M.R.	G.N.R.	M.R.		
Bingham.	Lowdham.	Victoria.		Victoria.			
—	7.0	—	7.20	—	6.35	—	6.50
7.30	—	7.54	—	6.0	—	6.23	—
—	7.46	—	8.5	—	7.30	—	7.49
8.20	—	8.45	—	7.20	—	7.43	—
—	8.30	—	8.50	—	9.5	—	9.24
9.27	—	9.51	—	9.35	—	10.0	—
—	10.19	—	10.38	—	11.25	—	11.47
12.10	—	12.40	—	11.30	—	11.53	—
<hr/>							
2.2	—	2.26	—	—	2.5	—	2.25
—	2.4	—	2.27	2.15	—	2.38	—
—	4.10	—	4.30	—	4.45	—	5.4
4.58	—	5.22	—	5.30	—	5.13	—
—	6.34	—	6.55	4.50	—	6.38	—
7.5	—	7.29	—	6.15	—	—	6.50
8.50	—	9.14	—	—	6.30	—	—
—	10.20	—	10.35	7.30	—	7.59	—
—	—	—	—	8.25	—	8.51	—
—	—	—	—	—	8.55	—	9.14
—	—	—	—	9.44	—	10.8	—
<hr/>							
SUNDAYS.							
—	12.55	—	1.15	—	10.25	—	10.44
3.3	—	3.27	—	2.10	—	2.33	—
—	6.49	—	7.10	—	8.10	—	8.29
8.35	—	9.0	—	9.0	—	9.23	—

N.B.—All the G.N.R. trains stop at London Road (High Level Station) as well as at the Victoria Station

EAST BRIDGFORD MAGAZINE.



St. Peter's Church, East Bridgford.

Services.

HOLY COMMUNION:—

On all SUNDAYS (except first in Month) and HOLY DAYS at 8 a.m.
also after Morning Prayer on the Third Sunday in the Month.

On the first Sunday in the Month: Matins at 10; Choral Eucharist 10.45.

MORNING AND EVENING PRAYER:—

Sundays at 10.45, and 6.30 p.m.

Weekdays, Wednesday and Friday at 10; and 6.30 p.m. daily

HOLY BAPTISM:—

First Sunday in month at 3, or at other Services on due notice.

CHURCHING OF WOMEN:—

Wednesday and Friday at 10, or before any Service on due notice.

SUNDAY SCHOOL AND CATECHISM:—

At 10 a.m. in the National School. Catechism in Church at 2.30.

ON GOOD FRIDAY collections were made for Missions to Jews £1 11s. 8d.

ON EASTER DAY, the offerings £8 5s. 2d. were given to the Diocesan Funds from which contribution will be made to the Central Church Fund for Training for the Ministry, helping the poorer Clergy and other general purposes for which a Central fund is now being raised.

The quota asked for from this parish towards the Diocesan Funds is £11, and the annual collection will be made on May 25th, "Diocesan Sunday."

WAR MEMORIALS.—There are three distinct ideas of the purpose and meaning for which War Memorials are desired :

(1) A permanent and visible reminder of the great war, as a record of an important crisis in our national history.

(2) Some philanthropic undertaking to help to make conditions of life better, as a thank-offering for the preservation of our country and our friends.

(3) A memorial erected for those who have fallen, marking our sense of the value of the sacrifice, and our hope and faith in a future life, through the Cross and Resurrection of our Lord.

In the Christian cemeteries on the fields of battle, absolute simplicity is aimed at, each grave is marked by a stone, and there is no difference of rank and position. But each cemetery is to have its tall "Cross of Sacrifice" 25 feet high, and its "stone of remembrance" with the inscription "Their name liveth for evermore," as the central memorial in these gardens of rest.

It is intended to erect in our Churchyard, a memorial cross, as our first duty to those East Bridgford men who have fallen. The scheme is in course of preparation, and contributions towards the cost will be received by the Rector.

EASTER VESTRY.—The Vestry Meeting was held at 7 p.m. on Tuesday in Easter week, April 22nd, for the appointment of Churchwardens and was followed by a Church Meeting for the consideration of Church accounts, etc.

Mr. Rupert Beaumont was appointed by the Vestry and Mr. J. Turner by the Rector as Churchwardens for the ensuing year. Messrs. Allwood, C. Millington, E. Coville, W. Lander, R. Shardlow and W. R. Sharman were re-appointed Sidesmen.

The Rector expressed thanks to Miss Fox, who resigned the office of Churchwarden, for the efficiency with which her duties had been performed during the last two years.

The accounts were passed, and a summary of the accounts with the collections in Church is here subjoined. Mr. Turner having collected additional subscriptions towards the Church expenses, there remains a balance due of 15s. 4d.

The Vestry agreed to the proposal to erect a Memorial Cross in the Churchyard with the names of East Bridgford men who have given their lives in the great war, and authorized an application for a Faculty for its erection.

The following resolution was also passed at the Church Meeting held after the Vestry :—That this meeting desires that the Enabling Bill for the self-government of the Church, prepared by the Archbishop of Canterbury, should be passed through Parliament at the earliest opportunity.

SUMMARY OF CHURCH ACCOUNTS, EASTER 1910.								
Receipts.		£ s. d.	£ s. d.	Expenditure.		£ s. d.	£ s. d.	
Collections—				Repaid Churchwardens ..				10 0
Church Expenses ..		71	13 4	Church Maintenance viz :				
Saints' Days, etc. ..		3	17 1	Churchyard ..	3	0 0		
Sick and Poor ..		11	14 10	Insurance and Fees ..	6	3 10		
Special Purposes viz :—				Choir, Organ ..	9	11 6		
Diocesan Funds ..	8	3 10		Salaries ..	42	10 0		
Missionary Students ..		16	0	Lighting, Fuel and				
Prisoners of War ..	8	18 9		Cleaning ..	16	14 7		
Red Cross ..	13	2 10		Sundries ..	7	13 4		
Church Army Huts ..	3	10 0					85 13 3	
Sunday School ..	3	7 0		Church Alms ..			11 14 10	
Missions S.P.G. ..	3	18 10		Special Objects (as other				
Hospitals ..	8	8 0		side) ..			55 1 9	
Southwell House ..		13 0		Church Building Society	10	0		
National Society ..	1	0 0		Church Defence ..	5	0		
Waifs and Strays ..	1	5 10					15 0	
Missions to Jews ..	1	11 8						
			55 1 9					
Subscriptions, April, 1910			10 12 6					
Balance due to Church-								
wardens ..			15 4					
							£153 14 10	

J. TURNER,
GERTRUDE FOX, } Churchwardens

CHURCH FLAG.—The sum of £6 0s. 9d. has been accumulated by small subscriptions and the Church box, for the purchase of a flag. During the present year the Box has produced 15/6. The St. George's Cross cost £4 16s. 9d., and when a sufficient sum has been received, a Union Jack will also be purchased. Contributions may be given to the Rector or placed in the Church box.

TEMPERANCE HALL.—An entertainment and "Waxworks" exhibition of a very lively and varied character was provided on Monday, April 21st, under the direction of Mrs. Dexter and Miss Sharpe, by which £18 18s. 3d. was obtained towards the cost of renovating the Temperance Hall.

LOCAL GOVERNMENT APPOINTMENTS. Mr. John Wilkinson has been elected as Rural District Councillor. Messrs. John Wilkinson, Ernest Coville, and Edwin Fox, have been appointed as Overseers, and Mr. Edwin Fox as School manager, appointed by the Parish Council.

ALLOTMENTS' ASSOCIATION.—A lecture was given on April 14th, by Mr. W. U. Hill, Inspector under the Board of Agriculture on Potato growing.

WOMEN'S INSTITUTE.—The next Meeting will be on May 13th, when Mrs. Hayman will give a Talk on Books; and an exhibition and sale of Supper dishes will be held.

CHURCH SERVICES.

May 4th.	2nd Sunday after Easter.	Holy Communion at mid-day.
" 11th.	3rd Sunday after Easter.	Holy Communion at 8.
" 18th.	4th Sunday after Easter.	Holy Communion at Mid-day.
" 25th.	5th Sunday after Easter.	Holy Communion at 8. Diocesan Sunday Collection.
" 29th.	Ascension Day.	Holy Communion at 8.
June 1st.	Sunday after Ascension.	Holy Communion at 8.
" 8th.	Whit-Sunday.	Holy Communion at 7, 8, and Midday. Choral, Mattins at 10.

LIGHTING-UP TIMES for May, corrected for Summer-time East Bridgford :—

May 6th, 9.7 ; 15th, 9.2 (Full Moon) ; 22nd, 9.53 ; 29th, 9.43 (New Moon).

Time Table for May for East Bridgford of Trains to and from Nottingham.

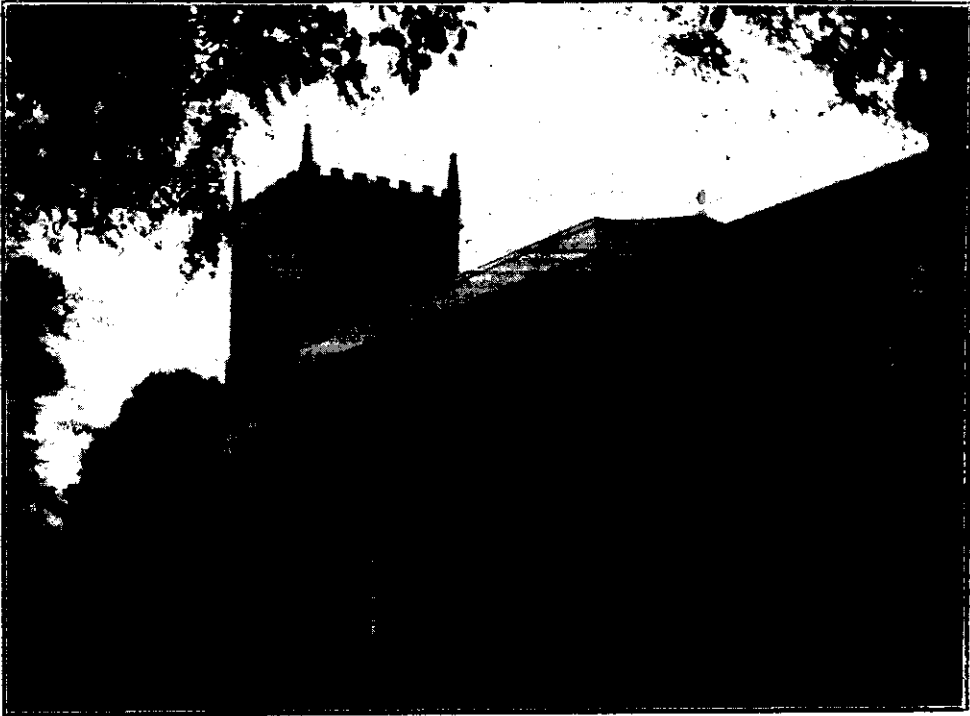
Leave		Arrive Nottingham		Leave Nottingham.		Arrive	
Bingham.	Lowdham.	G.N.R.	M.R.	G.N.R.	M.B.	Bingham.	Lowdham
		Victoria.		Victoria.			
—	7.0	—	7.20	5.55	—	6.18	—
7.30	—	7.54	—	—	6.35	—	6.50
—	7.40	—	8.5	*6.40	—	7.3	—
—	8.30	—	8.50	—	7.30	—	7.49
8.20	—	8.45	—	7.20	—	7.43	—
*9.2	—	9.26	—	—	8.28	—	8.47
9.27	—	9.51	—	9.40	—	10.5	—
—	10.1	—	10.20	—	11.25	—	11.47
—	11.33	—	11.52	11.5	—	11.28	—
12.11	—	12.35	—	—	12.55	—	1.13
—	1.50	—	2.10	—	1.32	Thurs. & Sat.	1.52
2.2	—	2.26	—	*1.50	—	2.13	—
—	2.4	—	2.27	—	2.2	—	2.22
*3.47	—	4.11	—	2.15	—	2.35	—
—	4.10	—	4.30	—	4.45	—	5.4
+5.8	—	5.22	—	*5.30	—	5.53	—
—	6.33	—	6.50	—	5.50	—	6.9
7.5	—	7.29	—	6.15	—	6.38	—
—	7.27	—	7.50	—	6.30	—	6.50
8.22	—	8.45	—	7.40	—	8.9	—
8.50	—	9.14	—	8.45	—	9.11	—
—	10.20	—	10.35	—	8.55	—	9.14
—	—	—	—	10.15	—	10.39	—

SUNDAYS.

—	1.4	—	1.25	—	10.25	—	10.44
3.3	—	3.27	—	2.10	—	2.33	—
—	6.49	—	7.10	—	8.10	—	8.29
8.35	—	9.0	—	9.0	—	9.23	—
—	9.49	Thurs. & Sat. 10.5		—	—	—	—

N.B.—All the G.N.R. trains stop at London Road (High Level Station) as well as at the Victoria Station
* Newark trains.

EAST BRIDGFORD MAGAZINE.



St. Peter's Church, East Bridgford.

Services.

HOLY COMMUNION:—

On all SUNDAYS (except first in Month) and HOLY DAYS at 8 a.m.
also after Morning Prayer on the Third Sunday in the Month.

On the first Sunday in the Month : Matins at 10 ; Choral Eucharist 10.45.

MORNING AND EVENING PRAYER.—

Sundays at 10.45, and 6.30 p.m.

Weekdays, Wednesday and Friday at 10 ; and 6.30 p.m. daily.

HOLY BAPTISM:—

First Sunday in month at 3, or at other Services on due notice.

CHURCHING OF WOMEN:—

Wednesday and Friday at 10, or before any Service on due notice.

SUNDAY SCHOOL AND CATECHISM:—

At 10 a.m. in the National School. Catechism in Church at 2.30.

THE CENTRAL CHURCH FUND AND DIOCESAN FUND.

The Archbishops of Canterbury and York, and the representatives, who have been chosen by the Diocese to form the Central Board of Finance of the Church of England have asked for the co-operation of every parish in making the Central Church fund a great success. It has been started after some years of quiet preparation to supplement the work of Diocesan Boards of Finance, and to undertake the tasks which neither Parishes nor Dioceses, but only the Church as a body can carry through.

In this Diocese the appeal for the two purposes has been combined, and in East Bridgford Church, we have given the Easter offerings as well as the Collections on May 25th, Diocesan Sunday, to these combined objects.

On Easter Day £8 5s. 2½d., and on May 25th, £14 9s. 5½d. was collected, making £22 14s. 8d. in all, of which £11 is asked for for Diocesan purposes.

On April 27th, the 1st Sunday after Easter, a special Service of Thanksgiving was held in Church at 7 o'clock, after the close of evensong. The East Bridgford Choral Society performed the Hymn of Praise (Mendelssohn). The Rector opened the service with a short introduction pointing out the suitability of the words and music, followed by prayers and thanksgiving; and the service was concluded by the singing of Hymn 166, "All people that on earth do dwell." The service was felt to be impressive and appropriate.

The East Bridgford Horticultural Society will hold its 53rd Exhibition on Tuesday, July 1st. The fifty-second Annual Exhibition was held in 1915, and since that date the serious circumstances of war time have been a sufficient reason for an interruption of three years. Now that the war is over it is hoped that the show will meet with renewed support, and that the objects of the Society, to promote Cottage Gardening and Horticulture, will be pursued with fresh energy.

The show will be held in the old Cricket Ground in Kneeton Road, and will open at 3 p.m. The prices of admission to the field and show will be 1s. up to 5 p.m., and 6d. after 5 p.m.

Sports will be arranged, to begin at 6 o'clock, and a list of the events will be issued, entrances to be made on the ground.

The Woodborough Band has been engaged for the afternoon and evening. The Rules and Schedule of Prizes will shortly be in the hands of the subscribers.

A feature of the Show this year, will be a tent of exhibits arranged and managed by the Women's Institute.

CRICKET CLUB.—A list of matches has now been fixed for the season and there appears to be every prospect of success for the Cricket Club, under the Captaincy of Mr. W. H. Foster. Matches have already been played against Bingham, (lost) on May 10th, Lowdham, (won) on May 17th; Lenton, (lost) on May 23rd, and Shelford, (won) on May 26th. Matches to come are as follows:—

May 31—Cotgrave, away.
June 7th—Shelford, away.
Whit-Monday—Flintham, away.
June 14th—Cotgrave, home.
.. 21st—Radcliffe War Hospital, away
.. 26th—Carlton, home.
.. 28th—Cammel-Laird, home.
.. 30th—Whatton, home.
July 1st—Lt. Sandham's XI, home.

On Tuesday, June 17th, the Churchworkers of the Rural Deanery are invited to meet the Archdeacon of Nottingham. Tea will be provided in the garden of Bingham Rectory at 5.30 p.m. and a service held in Bingham Church at 7 p.m. Applications from any who wish to be present, of those in East Bridgford Parish to be made to the Rector.

CHURCH SERVICES.

June 1st. Sunday after Ascension. Holy Communion at 8.
.. 8th. WHIT-SUNDAY. Holy Communion at 7, 8, and Midday (Choral). Mattins at 10.
.. 11th. S. Barnabas. Holy Communion at 8.
.. 18th. Trinity Sunday. Holy Communion at Mid-day.
.. 22nd. 1st Sunday after Trinity. Holy Communion at 8.
.. 24th. St. John Baptist. Holy Communion at 8.
.. 29th. 2nd Sunday after Trinity. S. Peter. Feast Sunday. Holy Communion at 8.

EXTRACTS FROM PARISH REGISTERS.

BAPTISM.

May 4th. Margaret Ellen, daughter of George Turner and Jane Ellen Jackson.

MARRIAGES.

April 28th. At St. John's, Carrington, Allan Lodge and Harriett Maria Cloxton.

May 17th. John Crossland and Ethel Malt.

LIGHTING-UP TIMES for June, corrected for Summer-time East Bridgford:—

June 5th, 9.50; 13th, 9.58 (Full Moon); 21st, 10.2; 27th, 10.3 (New Moon).

Time Table for June for East Bridgford of Trains to and from Nottingham.

Leave		Arrive Nottingham		Leave Nottingham.		Arrive	
		G.N.R.	M.R.	G.N.R.	M.R.	Bingham.	Lowdham
Bingham.	Lowdham.	Victoria.	Victoria.	Victoria.	Victoria.		
—	7.0	—	7.20	5.55	—	6.18	—
7.30	—	7.54	—	—	6.35	—	6.50
—	7.46	—	8.5	*6.40	—	7.3	—
—	8.30	—	8.50	—	7.30	—	7.49
8.20	—	8.45	—	7.20	—	7.43	—
*9.2	—	9.26	—	—	8.28	—	8.47
9.27	—	9.51	—	9.40	—	10.5	—
—	10.1	—	10.20	—	11.25	—	11.47
—	11.33	—	11.52	11.30	—	11.53	—
12.16	—	12.40	—	—	12.55	—	1.13
—	1.50	—	2.10	—	1.32	Thurs. & Sat.	1.52
2.2	—	2.26	—	*1.50	—	2.13	—
—	2.4	—	2.27	—	2.2	—	2.22
*3.47	—	4.11	—	2.15	—	2.35	—
—	4.10	—	4.30	3.0	—	3.23	—
4.58	—	5.22	—	—	4.45	—	5.4
—	6.33	—	6.50	*5.30	—	5.53	—
6.10	—	6.32	—	—	5.50	—	6.9
7.5	—	7.29	—	6.15	—	6.38	—
—	7.27	—	7.50	—	6.30	—	6.50
8.32	—	8.55	—	7.40	—	8.9	—
8.50	—	9.14	—	8.45	—	9.11	—
—	9.49	Thurs. & Sat.	10.5	—	8.55	—	9.14
—	—	—	—	10.15	—	10.39	—

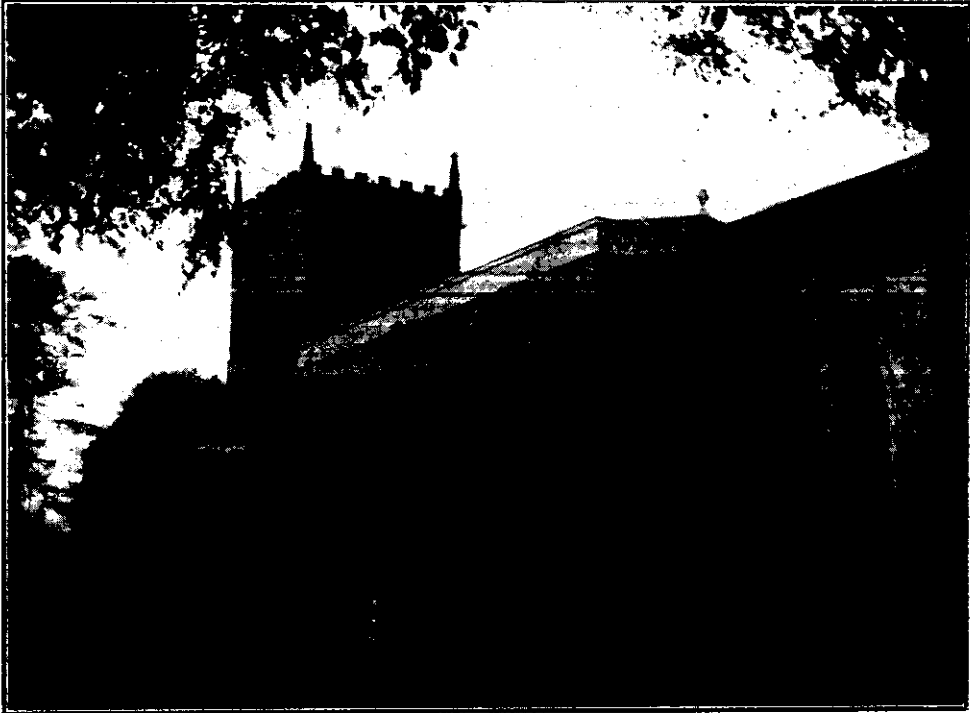
SUNDAYS.

—	1.4	—	1.25	—	10.25	—	10.44
3.3	—	3.27	—	2.10	—	2.33	—
—	6.49	—	7.10	—	8.10	—	8.29
8.35	—	9.0	—	9.0	—	9.23	—

N.B.—All the G.N.R. trains stop at London Road (High Level Station) as well as at the Victoria Station.

* Newark trains.

EAST BRIDGFORD MAGAZINE.



St. Peter's Church, East Bridgford.

Services.

HOLY COMMUNION:—

On all SUNDAYS (except first in Month) and HOLY DAYS at 8 a.m.
also after Morning Prayer on the Third Sunday in the Month.

On the first Sunday in the Month : Matins at 10 ; Choral Eucharist 10.45.

MORNING AND EVENING PRAYER:—

Sundays at 10.45, and 6.30 p.m.

Weekdays, Wednesday and Friday at 10 ; and 6.30 p.m. daily.

HOLY BAPTISM:—

First Sunday in month at 3, or at other Services on due notice.

CHURCHING OF WOMEN:—

Wednesday and Friday at 10, or before any Service on due notice.

SUNDAY SCHOOL AND CATECHISM:—

At 10 a.m. in the National School. Catechism in Church at 2.30.

ON Tuesday, June 17th, the Annual Conference of the Clergy and elected lay representatives of the nineteen parishes of the Rural Deanery of Bingham, was held at Bingham. After the Conference the Churchworkers of the Deanery were invited to meet the Archdeacon of Nottingham and tea was provided by the kindness of the Rector of Bingham in the Rectory garden. At 7 p.m. the Clergy, led by the Bingham choir, went in procession to the Church, which was filled with Churchworkers from the various parishes for evensong. The Archdeacon of Nottingham gave a beautiful address on "Fellow workers with God."

Very little rain has fallen during the last seven weeks and the continual drought has been serious. A violent storm on June 12-13 did considerable damage to the fruit. Though the South of England has had heavy rain lately up to the present (June 24th) very little has come our way.

We have now passed the longest day, when the sun reaches its highest at the Summer solstice. This occurs about June 21st, but as the true year is actually a period of $365\frac{1}{4}$ days, the solstice is thrown nearly 6 hours later each year, until it is re-adjusted every fourth year by the addition of a day in leap-year; so that the longest day varies from June 20th to June 22nd.

During July the mornings decrease 35 minutes and the afternoons 29 minutes.

CRICKET CLUB.—The following are the result of matches played during the month past.

May 31—Cotgrave, (away), lost.
 June 7th—Married v. Single; Single won.
 June 9th—Flintham, (away), won.
 June 12th—Radcliffe, won.
 June 14th—Cotgrave, lost.
 „ 16th—Whatton, (away), won.
 „ 19th—Radcliffe, (away), lost.
 „ 21st—Radcliffe War Hospital, (away), won.

Matches arranged are:—

June 26th, Carlton; 28th, Cammel-Laird; 30th, (Feast Week) Whatton; July 1st, Lt. Sandham's XI; July 3rd, Lenton; July 5th, Bingham; July 12th Lowdham; July 19th, Flintham; July 26th and Aug. 2nd, Farndon.

THE WOMEN'S INSTITUTE for East Bridgford and District arranged and organized a very successful Garden Fete, which was held on Whit-Tuesday, June 10th, in Mrs. Dexter's garden. Seven hundred visitors were admitted and the proceeds, about £13, were given to the District Nurse Fund. The weather was beautiful and the energy of the ladies, who kept the visitors occupied by a succession of entertainments, was deserving of all praise.

There was a Baby Show with 40 competitors of various ages from three months to three years, who were brought up for the first time in their lives before Judges, Drs. Marshall and Miss Challis the Superintendent of the Nottingham Nursing Federation.

There were Country Dances, String Band and other open air Concerts, Plays and Recitations, Bran-tub, Hat trimming and other competitions and mysterious tents for humorous shows and fortune-telling; and there was tea.

An interesting event was the presentation of a parting gift from subscribers in the Village, to Nurse E. M. Pike, who has been our excellent District Nurse since March, 1914, and who has now resigned, finding the wide area of this district too great an undertaking. The presentation was made by Miss Fox, who with appropriate words handed to Nurse Pike a wrist watch bearing an inscription and a purse of £8.

The 53rd Annual Show of the East Bridgford Horticultural Society will have been held, in Mr. Turner's field in Kneeton Road, by the time the Magazine is in its readers' hands, on Tuesday, July 1st. The schedule of Prizes and Programme of Sports has been issued.

The Officers of the Society are:—*President* Rev. A. Du Boulay Hill. *Vice-Presidents* Dr. Duff, Messrs J. Turner, J. W. Woodsend and W. A. Hodges, J.P. *Treasurer* Mr. J. W. Woodsend. *Secretary* Mr. H. Goldston. *Committee* Messrs. C. Bullers, E. Coville, W. C. Millington, J. Pickford, F. Sharp, J. Turner, A. Shipman, F. O. Green, T. Alvey, A. H. Smith, C. Moor, W. Baguley, J. T. Knight, J. Mussell, E. Millington, J. Lodder, E. Fox, W. Savage.

We wish for it a fine day and a successful show, after an interruption of three years of war time.

CHURCH SERVICES.

July 6th. 3rd Sunday after Trinity. Mattins at 10. (Choral). Holy Communion at 10.45.
 „ 13th. 4th Sunday after Trinity. Holy Communion at 8.
 „ 20th. 5th Sunday after Trinity. Holy Communion at Midday.
 „ 25th. St. James, Apostle and Martyr. Holy Communion at 8.
 „ 27th. 6th Sunday after Trinity. Holy Communion at 8.

THE SCHOOL.—Miss Dorothy Mabel Holderness, who has been assistant teacher since Oct. 1917, has resigned her post.

The School Managers are the Rector, Mr. W. A. Hodges, Mr. J. Pickford, Mr. J. Wilkinson, Miss Fox, (L.E.C.) Mr. E. Fox (Parish Council).

EXTRACTS FROM PARISH REGISTERS.

MARRIAGES.

- June 3rd. At Flintham, John Cecil Pickford and Anne Goodwin.
 „ 14th. At Burton Joyce, Richard Sharpe and Edith Eleanor Euerby.
 „ 16th. Cecil Donald Savage and Nina Annie Upton.

BURIALS.

June 12th. John Thomas Gregg, aged 54 years.

LIGHTING-UP TIMES for July, corrected for Summer-time East Bridgford :—

July 5th, 10.0 : 13th, 9.53 (Full Moon); 20th, 9.46; 27th, 9.36 (New Moon).

The Churchwardens wish to dispose of the material used for curtains for the Church windows in war-time; namely about 80 yards of blue cabinet cloth and 28 yards of green casement cloth (faded). Application should be made at the Rectory. Price 6d. and 3d. per yard.

Time Table for June for East Bridgford of Trains to and from Nottingham.

Bingham.	Leave		Arrive Nottingham		Leave Nottingham.		Arrive	
	Bingham.	Lowdham.	G.N.R. Victoria.	M.R.	G.N.R. Victoria.	M.R.	Bingham.	Lowdham
—	7.0	—	7.20	—	5.55	—	6.18	—
7.30	—	7.54	—	—	—	6.15	—	6.50
—	7.46	—	8.5	—	*6.40	—	7.3	—
—	8.30	—	8.50	—	—	7.30	—	7.49
8.20	—	8.45	—	—	7.20	—	7.43	—
*9.2	—	9.26	—	—	—	8.28	—	8.47
9.27	—	9.51	—	—	9.40	—	10.5	—
—	10.1	—	10.20	—	—	11.25	—	11.47
—	11.33	—	11.52	—	11.30	—	11.53	—
12.16	—	12.40	—	—	—	12.55	—	1.13
—	1.50	—	2.0	—	—	1.32	Thurs. & Sat.	1.52
2.2	—	2.26	—	—	*1.50	—	2.13	—
—	2.4	—	2.27	—	—	2.2	—	2.22
*3.47	—	4.11	—	—	2.15	—	2.35	—
—	4.10	—	4.30	—	3.0	—	2.23	—
4.58	—	5.22	—	—	—	4.45	—	5.4
—	6.33	—	6.50	—	*5.30	—	5.53	—
6.10	—	6.32	—	—	—	5.50	—	6.9
7.5	—	7.29	—	—	6.15	—	6.38	—
—	7.27	—	7.50	—	—	6.30	—	6.50
8.32	—	8.55	—	—	7.40	—	8.9	—
8.50	—	9.14	—	—	8.45	—	9.11	—
—	9.49	Thurs. & Sat.	10.5	—	—	8.55	—	9.14
—	—	—	—	—	10.15	—	10.39	—

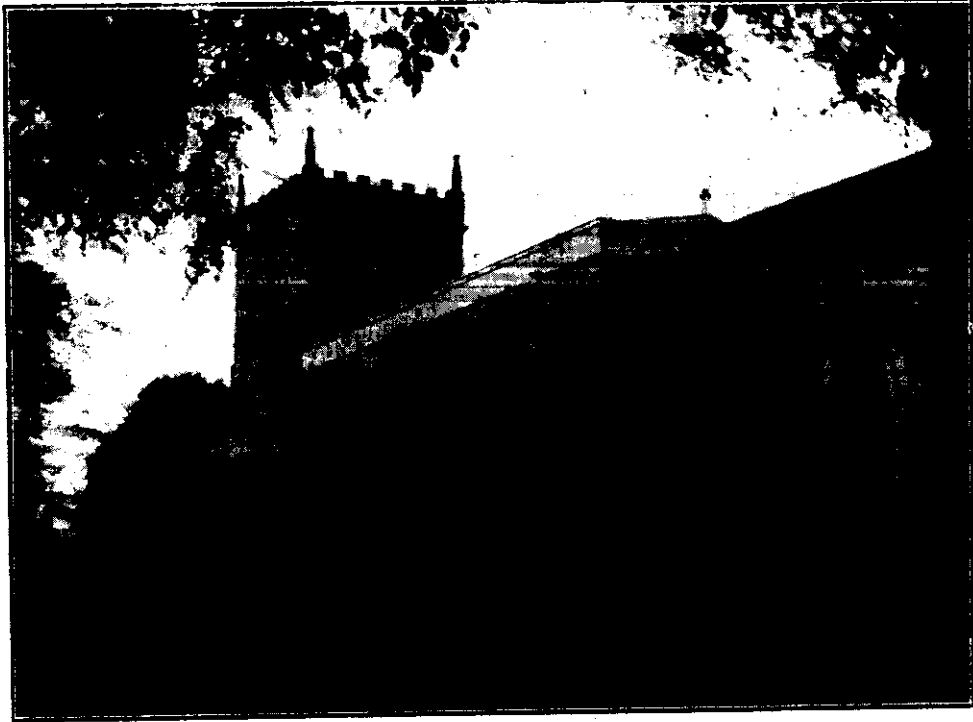
SUNDAYS.

—	1.4	—	1.25	—	10.25	—	10.44
3.3	—	3.27	—	2.10	—	2.33	—
—	6.49	—	7.10	—	8.10	—	8.29
9.00	—	9.0	—	9.0	—	9.23	—

N.B.—All the G.N.R. trains stop at London Road (High Level Station) as well as at the Victoria Station.

* Newark trains.

EAST BRIDGFORD MAGAZINE.



St. Peter's Church, East Bridgford.

Services.

HOLY COMMUNION :—

On all SUNDAYS (except first in Month) and HOLY DAYS at 8 a.m.
also after Morning Prayer on the Third Sunday in the Month.

On the first Sunday in the Month : Matins at 10 ; Choral Eucharist 10.45.

MORNING AND EVENING PRAYER :—

Sundays at 10.45, and 6.30 p.m.

Weekdays, Wednesday and Friday at 10 ; and 6.30 p.m. daily

HOLY BAPTISM :—

First Sunday in month at 3, or at other Services on due notice.

CHURCHING OF WOMEN :—

Wednesday and Friday at 10, or before any Service on due notice.

SUNDAY SCHOOL AND CATECHISM :—

At 10 a.m. in the National School. Catechism in Church at 2.30.

THE FLOWER SHOW.—The 23rd exhibition of the East Bridgford Horticultural Society held on Feast Tuesday, July 1st, was a great success.

The response to the call for increased subscriptions, after an intermission of three years, met with a ready response, and the attendance during the afternoon reached a larger number than in any previous year. The number of exhibitors, except in Class C, was quite up to the average, and though there was evidence of the dry and backward season, there was a good display in the tent. The Women's Institute Exhibition, which included table decorations—Wild flowers (for children), Eggs, Butter, Bottled Fruits and Confectionery, was a very attractive addition to the Show.

List of Prize Winners:—

CLASS A.

Extra. Roses—1 Miss Fox (gardener, Mr G. Upton), 2 Mr W. A. Hodges (gardener, Mr J. Upton)
Geranium (Bloom)—1 Rev A. D. Hill (gardener, Mr J. Mussell), 2 Mr J. W. Woodsend (gardener, Mr F. O. Green)
Pelargonium—1 Woodsend, 2 Hill
Fuchsia—1 Woodsend, 2 Hill
Calceolaria (herbaceous)—1 Woodsend
" (shrubby)—1 Hill, 2 Woodsend
Sweet William—1 Hill, 2 Miss Fox
Bouquet—1 Woodsend, 2 Hill
Sweet Peas—1 Woodsend, 2 Fox
Carrot—1 Hill, 2 Woodsend
Cauliflower—1 Hill
Cucumber—1 Woodsend, 2 Hodges
Broad Beans—1 Hill, 2 Woodsend
Onions, Spring—1 Woodsend, 2 Hill
" Autumn—1 Hodges, 2 Woodsend
Lettuce—1 Woodsend, 2 Hodges
Peas—1 Woodsend, 2 Hodges
Potatoes (round)—1 Hill, 2 Woodsend
" (kidney)—1 Hill, 2 Woodsend
Turnips—1 Hodges, 2 Woodsend
Apples—1 Woodsend, 2 Fox
Gooseberries—1 Hodges, 2 Hill
Currants (white)—1 Woodsend, 2 Fox
" (red)—1 Hill, 2 Woodsend
" (black)—1 Fox, 2 Hodges
Raspberries—1 Hill, 2 Richardson
Strawberries—1 Mrs Archard, 2 Hodges
Tray of Vegetables—1 Woodsend, 2 Hill

CLASS B.

Geranium, for bloom—1 A. Smith, 2 W. Millington
" for foliage—1 Millington, 2 Smith
Pelargonium—1 A. Smith
Fuchsia—1 Millington, 2 Smith
Calceolaria (shrubby)—1 Smith, 2 W. Lander
Plants (greenhouse) 1 Millington
Sweet Williams—1 Millington
Bouquet of Garden Flowers—1 J. Fletcher
Carrots, 6—1 Millington, 2 H. Gibbons
Cucumbers, 2—1 Coville, 2 Millington
Broad Beans, 6—1 Smith, 2 Millington
Onions—1 J. T. Knight, 2 Smith
Lettuces—1 Coville, 2 Smith
Peas—1 Millington, 2 J. T. Knight
Potatoes (round)—1 H. Pick
" (kidney)—1 Coville, 2 Millington
Turnips—2 Smith, No 1
Apples—1 G. Alvey, 2 Coville
Gooseberries—1 A. Shipman, 2 Alvey

Currants (white)—1 Alvey, 2 Millington
" (red)—1 Coville, 2 Millington
" (black)—1 Lander, 2 A. Smith
Raspberries—1 H. Pick, 2 Coville
Strawberries—1 H. Pick
Roses—1 W. Millington, 2 E. Coville

CLASS C.

Geranium (bloom)—1 Higgs, 2 R. Upton
" (foliage)—1 Higgs
Pelargonium—1 Higgs
Fuchsia—1 Higgs
Calceolaria—1 Higgs
Window Plants—1 Upton, No 2
Sweet Williams, 6—1 Higgs
Collection of Cut Flowers—1 Higgs
Pansies, 6—1 Higgs
Sweet Peas—1 Higgs
Carrots—1 Higgs
Rhubarb—1 Higgs
Broad Beans, 6—1 Higgs
Onions, Spring—1 Higgs
" Autumn—1 R. Goodman, 2 Thornton
Lettuces—1 Higgs
Echalots—1 Higgs
Peas—1 Higgs
Potatoes (round)—1 Higgs
" (kidney)—1 Goodman, 2 Higgs
Turnips—1 Goodman, 2 Higgs
Apples—1 Thornton, 2 Higgs
Gooseberries—1 Goodman, 2 Higgs
Strawberries—1 Higgs, No 2
Currants (white) 1 Higgs, 2 Thornton
" (red)—1 Thornton, 2 Higgs
" (black)—1 Watson, 2 Thornton
Best Tray of Vegetables—1 J. Higgs
Roses—1 Mr J. Higgs, 2 Mr T. Watson

SPECIAL PRIZES.

Messrs. Doncaster's—1 Millington, 2 Higgs
Premier for Potatoes, round and kidney—Rev A. D. Hill

WOMEN'S INSTITUTE SECTION.

Table Decoration—1 Miss Sharpe, 2 Mrs Moor, 3 Mrs Duff
Wild Flowers—1 Mrs Field, 2 Miss Sharpe
Buttonholes—1 Mrs Upton, 2 Mrs Fletcher
Wild Flower Bouquet (Children)—H. Kemp, M. Upton, O. Boyce, K. Fox, R. Moor
Grasses—1 Miss Grove, 2 Miss Sharpe, 3 Miss Sharpe
Eggs, Brown—1 Mrs Baguley, 2 Miss Sharpe
" White—1 Mrs Hill, 2 Mrs M. Millington
Butter (Own)—1 Miss Marriott, 2 Mrs Attwood
" (Fancy)—1 Mrs Mason, 2 Mrs M. Millington

Sports were held at 6 p.m. with the following winners:—

1. BOYS under 10, L. Cleal, Bullers, Chester
2. BOYS, 10 to 16, R. Wilkinson, E. Raynor, L. Bateman
3. GIRLS, under 10, D. Green, I. Goodman, J. Wilkinson
4. Egg and Spoon Race, 10 to 16, M. Towle, S. Dexter, E. Waterfield
5. WOMEN'S Handicap 80 yards, M. Wilkinson, M. Mason, S. Dexter
6. MEN'S Handicap (open) Scotney, Fisher, Mitchell
7. High Jump (open) R. Moss, W. Bateman, G. Bateman
8. Wheelbarrow and Pipe Race (open) W. Bateman and Fisher, Goodwin and Pickford
9. Tug of War (teams of six) East Bridgford; Lowdham
10. Mile Handicap, Blood, Parnham, Mitchell
11. Slow Bicycle Race, F. Richardson, G. Bateman, V. Manchester

The Woodborough Band provided music for dancing during the evening.

EAST BRIDGFORD FEAST was kept on Sunday, June 29th (St. Peter's Day) with especial feelings of thankfulness; and the following Sunday, July 6th, observed throughout the Kingdom as a Day of Thanksgiving to Almighty God for the signing of the Treaty of Peace, which was concluded at Versailles on June 28th. The Special Service appointed for the occasion was used in our Church in the evening, enabling us to take part with all the Nation in offering our praises to God for the Peace wherewith the long struggle of the past five years has now been crowned, and also to join in Prayer that He will continue His grace towards us by leading us into a lasting fellowship of all classes and all nations.

On Sunday, July 13th, at 5.20 a.m. the Airship R. 34 was seen passing over East Bridgford on its return from America. It will be remembered that the Airship started on July 2nd, and reached America in 108 hours. The return journey was begun on July 10th, and ended at Pulham in Norfolk at 6.20 a.m. on July 13th, being accomplished successfully in 75 hrs. 3 min.

PEACE CELEBRATIONS.—The return of Peace was celebrated throughout Great Britain on Saturday, July 19th, by a general holiday. Towns and Villages alike endeavoured to mark the day as one to be long remembered and East Bridgford was not behindhand. The Church bells began it at 6 a.m. and flags were visible everywhere. At 2.30 p.m. a procession was formed at the Temperance Hall, which afforded a charming display of colour and costumes and representations of suitable subjects. First came "The Angel of Peace" with her attendant sprites, then the Union Jack carried by a soldier who had been all through the war, R. Moss. Decorated drays bore groups representing Victory and the Allied Nations, The British Colonies, The Seasons and Months. These were followed by decorated bicycles, for which prizes were awarded to Miss Barbara Duff, Miss Sharpe and G. Boyce. The School Children sang patriotic songs at various halts in the procession round the village, and were entertained at tea in the Temperance Hall at 4 p.m., after which they enjoyed races and competitions in Butt Close.

At 5 p.m. an interesting ceremony was performed of planting an oak tree on Cuttle Hill at the top of Trent Lane. This was done by the united efforts of the oldest and youngest inhabitants. Mr. John Green who is in his 90th year, and the son of Mrs. Charles Allwood who was born on the day peace was signed. Mr. A. W. Mason, Chairman of the Peace Celebration Committee, made a very appropriate speech on the occasion. The National Anthem was sung and the Church bells were ringing.

At 6 o'clock, 50 Service and Ex-Service men of East Bridgford, with their friends, were invited to the Temperance Hall, where an excellent repast on most tastefully decorated tables, was prepared. At the conclusion, the Rector read the King's message of greeting, which had been sent to the Lord Lieut. of the County, thanking "the brave men and women of Nottinghamshire for their devoted and patriotic services" during the five years of war, and expressing the sympathy of the King and Queen "with the relatives of the gallant men who had given their lives in the country's cause." On behalf of the inhabitants of East Bridgford he now gave them a cordial welcome on their return home.

Sports in Butt Close followed from 7 to 9 p.m., which amused the spectators in spite of the rain which had then began. The rain continued for 24 hours and was very welcome after the dry weather of nearly three months.

At 11 p.m. a brilliant flare-signal, as used by the Navy, was lighted in the cricket field and made a splendid illumination over the surrounding country. The Central Beacons and Bonfires Committee had been able to supply materials from surplus Admiralty Stores; and though the promised rockets did not reach us in time for Saturday's Celebration, yet on the following Monday, when the rain had ceased, we were able to have a fine display of a dozen magnificent rockets.

On July 29th, 1588, the news of the coming of the Spanish Armada for the conquest of England, was flashed by beacon fires throughout the length and breadth of the land; and now, 331 years later, East Bridgford has taken its part in an organised chain of signal fires as a welcome to peace after victory.

On Monday, July 21st, East Bridgford men and women over 60 years of age, were entertained at tea in the Temperance Hall. Mr. J. Wilkinson and Mr. R. Beaumont addressed the company, and the evening was enlivened with singing.

The Committee, of which Mr. A. W. Mason was Chairman, is to be congratulated on the programme of the peace celebrations, arranged at short notice and carried out with success. It will long remain in our memory.

CHURCH SERVICES,

Aug. 3rd.	7th Sunday after Trinity.	Mattins at 10.	Holy Communion at 10.45.	(Choral).
" 10th.	8th Sunday after Trinity	Holy Communion at 8.		
" 17th.	9th Sunday after Trinity.	Holy Communion at Midday.		
" 24th.	St. Bartholomew, A. & M.	10th Sunday after Trinity.	Holy Communion at 8.	
" 31st.	11th Sunday after Trinity.	Holy Communion at 8.		
Sept. 7th.	12th Sunday after Trinity.	Mattins 10.	Holy Communion 10.45. (Choral).	

LIGHTING-UP TIMES for Aug., corrected for Summer-time East Bridgford:—

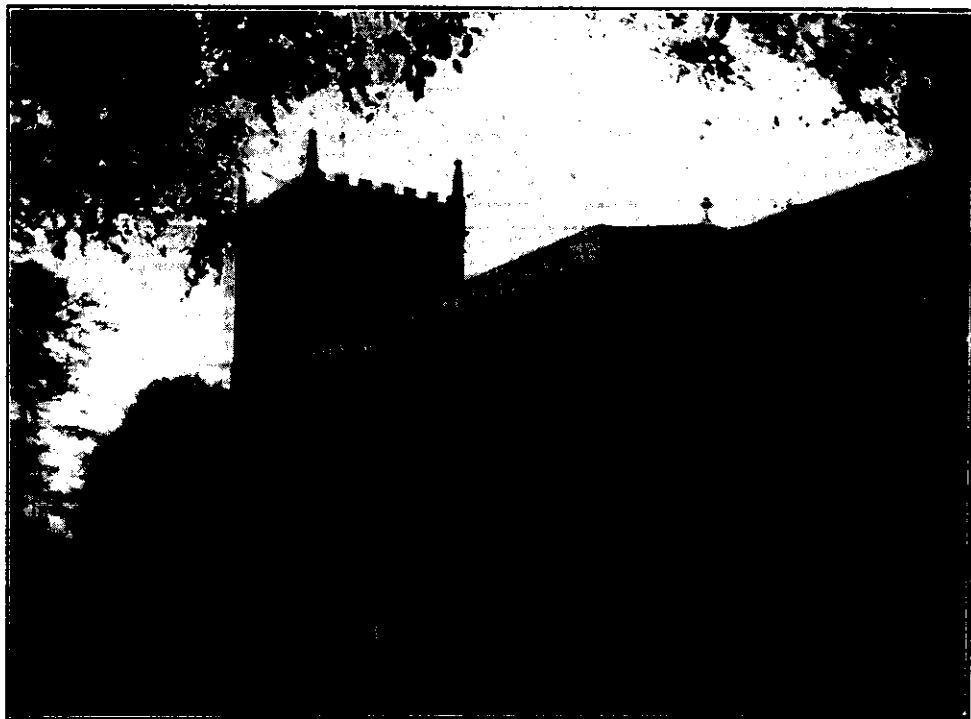
Aug. 3rd. 9.25; 11th, 9.9 (Full Moon); 18th, 8.54; 25th, 8.39 (New Moon).

EXTRACTS FROM PARISH REGISTERS.

BURIALS.

June 24th.	At <i>Nottingham Church Cemetery.</i>	Robert Johnson, aged 46 years.
July 17th.	At <i>Nottingham Church Cemetery.</i>	Rebecca Annie Goulder, aged 42 years.

EAST BRIDGFORD MAGAZINE.



St. Peter's Church, East Bridgford.

Services.

HOLY COMMUNION :—

On all SUNDAYS (except first in Month) and HOLY DAYS at 8 a.m.
also after Morning Prayer on the Third Sunday in the Month.

On the first Sunday in the Month : Matins at 10 ; Choral Eucharist 10.45.

MORNING AND EVENING PRAYER :—

Sundays at 10.45, and 6.30 p.m.

Weekdays, Wednesday and Friday at 10 ; and 6.30 p.m. daily.

HOLY BAPTISM :—

First Sunday in month at 3, or at other Services on due notice.

CHURCHING OF WOMEN :—

Wednesday and Friday at 10, or before any Service on due notice.

SUNDAY SCHOOL AND CATECHISM :—

At 10 a.m. in the National School. Catechism in Church at 2.30.

MOTHERS' UNION.—The East Bridgford Branch of the Mothers' Union, joining with Kneeton and Flintham, held their Summer Outing in the garden of Flintham Vicarage at the invitation of Mrs. Rouse. Mr. Bullers' van accommodated most of our party and the rest cycled. Tea was provided by Mrs. Hill. After tea an interesting address was given by Mrs. Burton, showing how we are living in the midst of changes, and the need there is for Mothers to meet these changes sympathetically by using whatever is to the best advantage of her boys and girls, and not allowing herself to despair of finding something good in every change, but being ready to seize upon the best of it; Mrs. Rowley also addressed the members, on the impossibility of maintaining a high standard of life if the right use of Sunday is ignored. The whole party spent an enjoyable time in walking through Mr. Hildyard's gardens and hothouses, under the guidance of Mr. Banham.

CRICKET CLUB.—Five matches, played against Carlton, Cammell-Laird, Whatton, and Bingham, during June and July as well as that against Radcliffe War Hospital (August 7th), were unfortunately lost. Matches have been won against Lowdham (July 12th), Car Colston (July 19th), C. Thurman's XI (August 2nd and 16th). A good match is arranged for Aug. 30th, at home, against Mr. R. H. Swain's XI.

BELL-RINGING.—On July 22nd members of the Midland Counties Association of Change Ringers rang a peal of 5040 changes in several Minor methods, on the bells of East Bridgford Church in 2 hours 50 minutes:—1 Rev. A. D. Hill, 2 G. Proctor (Grantham), 3 Rev. C. F. Sturton (Orston), 4 A. Mackears (Long Bennington), 5 F. Spencer (Radcliffe), 6 W. White (Cotgrave); conducted by W. White. This is the first complete peal that has been successfully accomplished on our bells, though several attempts have been made, and the ringing was very good.

THE WOMEN'S INSTITUTE has arranged for a series of seven lectures by Mrs. Robinson (County Council Lecturer) on Fruit bottling, canning, drying, crystallizing and pickling, jam and jelly making, fruit syrups and liquors. The course will begin on Thursday, September 18th. Notice will be given of time and place.

The next monthly Meeting will be held on September 9th, and will include a demonstration on Fruit grading and packing by Mr. Taborn.

THE HARVEST THANKSGIVING SERVICES will be held on Thursday, September 25th, at 7.30 p.m. and on the following Sunday, September 28th, if the Harvest is over by that date.

CHURCH SERVICES.

Sept. 12th	12th Sunday after Trinity.	Mattins at 10. Holy Communion at 10.45. (Choral).
.. 14th	13th Sunday after Trinity.	Ember Week. Holy Communion at 8.
.. 21st	14th Sunday after Trinity.	St. Matthew, A.E.M. Holy Communion at Midday.
.. 25th	Thursday.	Harvest Thanksgiving. 7.30.
.. 28th	15th Sunday after Trinity.	Holy Communion at 8.
.. 29th	S. Michael and All Angels.	Holy Communion at 8.
Oct. 5th	16th Sunday after Trinity.	Mattins 10. Holy Communion 10.45. (Choral).

We desire to express sympathy with Mr. Hodges in his bereavement, Mrs. Hodges, whose health has been failing for some time especially since the loss of her son, Capt. Harold Hodges died on Aug. 11th. The funeral was attended by a large number of friends, including many who had known her wide sympathy and work in Nottingham.

THE SCHOOL will re-open after the holidays on Monday, September 8th. Miss Gertrude Jesson has been appointed as Assistant Teacher in the place of Miss Mabel Holderness, who has left to take a post at her own home.

The following soldiers are still serving R. Barlow, E. Chapman, G. Cloxton, A. Crossland, G. Crossland, F. Ellis, S. Hoyles, E. Hunt, A. C. Millington, G. Padgett, O. Raynor, A. Upton, T. Wilkinson, V. Wilkinson; also A. Manchester and B. Blagg, R.N. To those who were unable to be present at our Peace Celebration on July 19th, leather purses have been sent, as a souvenir of the occasion from the inhabitants.

LIGHTING-UP TIMES for Sept., corrected for Summer time East Bridgford:—
Sept. 2nd, 8.51; 10th, 8.32 (Full Moon); 19th, 8.17; 24th, 7.58 (New Moon); 29th, 6.46.

"Summer-time" ends on the night between Sunday, 28th and Monday, 29th September, when Clocks must be put back one hour. The hands of striking clocks should not be moved backwards lest the striking mechanism be disarranged. These clocks should be stopped for an hour and then set going again.

EXTRACTS FROM PARISH REGISTERS.

BAPTISMS.

July 27th.	Harold, son of Charles and Sarah Hannah Smith.
Aug. 10th.	Victor William, son of Charles Kirkland and Frances Daisy Allwood.
.. ..	Joan Mavis, daughter of William George and Charlotte Fenemore.

BURIALS.

July 29th.	Thomas Watson, aged 74 years.
Aug 13th.	Augusta Hodges, aged 71 years.

Time Table for Sept. for East Bridgford of Trains to and from Nottingham.

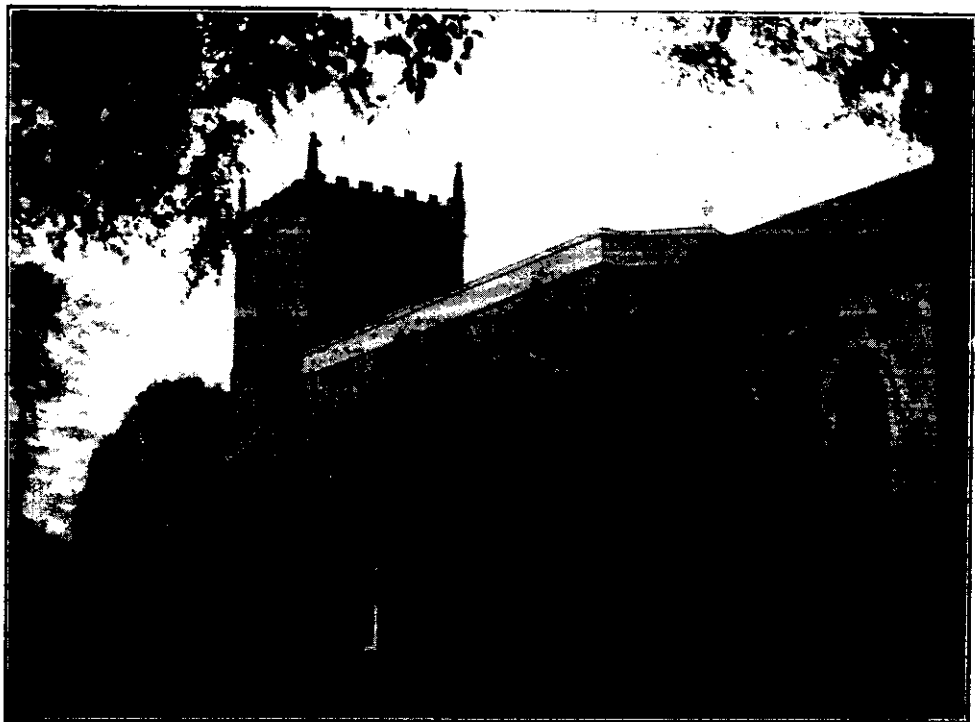
Leave		Arrive Nottingham		Leave Nottingham.		Arrive	
Bingham.	Lowdham.	G.N.R.	M.R.	G.N.R.	M.R.	Bingham.	Lowdham
		Victoria.		Victoria.			
—	7.0	—	7.20	5.55	—	6.18	—
7.30	—	7.54	—	—	6.35	—	6.50
—	7.46	—	8.5	*6.40	—	7.3	—
—	8.30	—	8.50	—	7.30	—	7.49
8.20	—	8.45	—	7.20	—	7.43	—
*9.2	—	9.26	—	—	8.28	—	8.47
9.27	—	9.51	—	9.40	—	10.5	—
—	10.1	—	10.20	—	11.25	—	11.47
—	11.33	—	11.52	11.30	—	11.53	—
12.16	—	12.40	—	—	12.55	—	1.13
—	1.50	—	2.10	—	1.32	Thurs. & Sat.	1.52
2.2	—	2.26	—	*1.50	—	2.13	—
—	2.4	—	2.27	—	2.2	—	2.22
3.47	—	4.11	—	2.15	—	2.35	—
—	4.10	—	4.30	3.0	—	3.23	—
4.58	—	5.22	—	—	4.45	—	5.4
—	6.33	—	6.50	*5.30	—	5.53	—
6.10	—	6.32	—	—	5.50	—	6.9
7.5	—	7.29	—	6.8	—	6.38	—
—	7.27	—	7.50	—	6.30	—	6.50
8.32	—	8.55	—	7.40	—	8.9	—
8.50	—	9.14	—	8.45	—	9.11	—
—	9.49	Thurs. & Sat.	10.5	—	8.55	—	9.14
—	—	—	—	10.15	—	10.39	—

SUNDAYS.

—	1.4	—	1.25	—	10.25	—	10.44
3.3	—	3.27	—	2.10	—	2.33	—
—	6.49	—	7.10	—	8.10	—	8.29
8.35	—	9.0	—	9.0	—	9.23	—

N.B. - All the G.N.R. trains stop at London Road (High Level Station) as well as at the Victoria Station.
 * Newark trains.

EAST BRIDGFORD MAGAZINE.



St. Peter's Church, East Bridgford.

SerVICES.

HOLY COMMUNION:—

On all SUNDAYS (except first in Month) and HOLY DAYS at 8 a.m.
also after Morning Prayer on the Third Sunday in the Month.

On the first Sunday in the Month: Matins at 10; Choral Eucharist 10.45.

MORNING AND EVENING PRAYER.—

Sundays at 10.45, and 6.30 p.m.

Weekdays, Wednesday and Friday at 10; and 6.30 p.m. daily.

HOLY BAPTISM:—

First Sunday in month at 3, or at other Services on due notice.

CHURCHING OF WOMEN:—

Wednesday and Friday at 10, or before any Service on due notice.

SUNDAY SCHOOL AND CATECHISM:—

At 10 a.m. in the National School. Catechism in Church at 2.30.

The Railway Strike which began on September 27th has delayed this issue of the Magazine.

It was thought better to postpone the Harvest Thanksgiving to a later date than that announced in the Magazine last month. The weather of September has been variable and uncertain, and has passed to extremes. September 11th and 12th were the hottest days of the summer. The shade temperature here was 82° and it Nottingham in reached 85°; and the week ended with cold north wind and rain. The coldest night was September 20th, with a frost in exposed places, and snow in some parts of England. Still there has been favourable weather enough to get in the harvest. The Harvest Thanksgiving Service will be held on Thursday, October 9th, at 7.30 p.m. and on the following Sunday, there will be collections on behalf of the Sunday School Funds, as a Harvest Thankoffering.

THE CRICKET CLUB played the last match of the season on August 30th, against Mr. R. H. Swain's eleven which proved too strong for our home team. East Bridgford was, all out for 34 runs, while their opponents made 163 with the loss of three wickets, Mr. H. Swain making 46, and Mr. S. Buckley 61 not out.

THE LADIES' CRICKET CLUB has been successful in winning all its six matches, as follows :—

June 21st.	East Bridgford 81.	Eagle Ladies A.P.C. 44
July 10th.	.. 101.	Whatton 14
.. 12th.	.. 84.	Eagle A.P.C. 30
Aug. 23rd.	.. 44.	Boots' Athletic 26
Sept. 3rd.	.. 85.	War Hospital Nurses 37
.. 6th.	.. 55.	Boots' Athletic 33.

THE WOMEN'S INSTITUTE has been providing lectures during the past month on Fruit-drying, Crystallizing and Syrups. On Wednesday, October 8th, the members will meet at 6.30 p.m. in the new Building, which has been kindly provided by Miss Fox for the use of the Institute by the erection of a spacious Army Hut in Butt Close. It will be a great convenience to the Institute to have room where it can develop the energies which are so greatly to the credit of its members.

THE G.F.S. annual Festival for the Bingham branch was held at East Bridgford on Thursday, July 31st. It began with a Service in Church at 3 p.m. and the rest of the afternoon was spent in the garden at the Hall, where a performance was given of Shakespeare's play "As you like it," by the East Bridgford members.

THE ALLOTMENTS AND GARDENS ASSOCIATION will re-open this month with the annual meeting at Mr. W. Richardson's Red Barn on Monday, October 13th, at 7 p.m., when it is hoped all members will be present, without requiring further notices to be sent round to them.

The accounts of the past year will be submitted, and future lectures and other means of making the Association useful and interesting will be considered.

Members are reminded that the annual subscription, and rents, are due, and should be paid at this meeting.

CHURCH SERVICES.

Oct. 5th.	16th Sunday after Trinity.	Mattins at 10.	Holy Communion at 10.45. (Choral).
.. 9th.	Thursday.	Harvest Thanksgiving Service,	7.30 p.m.
.. 12th.	17th Sunday after Trinity.	Holy Communion at 8.	
.. 18th.	S. Luke, Ev.	Holy Communion at 8.	
.. 19th.	18th Sunday after Trinity.	Holy Communion at Midday.	
.. 26th.	19th Sunday after Trinity.	Holy Communion at 8.	
.. 28th.	St. Simon and St. Jude, A.A. and M.M.	Holy Communion at 8.	
Nov. 1st.	All Saints' Day.	Holy Communion at 8.	
.. 2nd.	20th Sunday after Trinity.	Mattins at 10.	Holy Communion 10.45. (Choral).

LIGHTING-UP TIMES for October, corrected for East Bridgford. one hour after sun-set :—

Oct. 2nd, 6.41; 9th, 5.22 (Full Moon); 16th, 5.5; 23rd, 4.51 (New Moon).

EXTRACTS FROM PARISH REGISTERS.

BAPTISM.

Sept. 14th. Dennis Frank, son of Ernest and Clara Fretwell

MARRIAGE.

Sept. 22nd. Charles Sidney Atkinson and Edith Jane Hall.

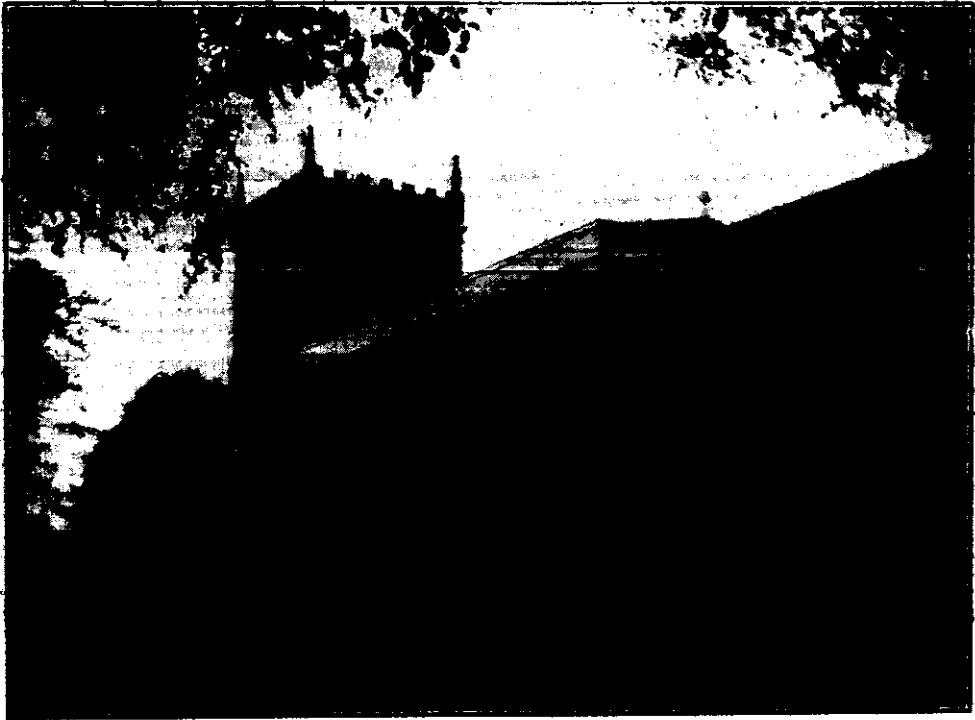
BURIAL.

Sept. 3rd. Mary Maria Mason, aged 65 years.





EAST BRIDGFORD MAGAZINE.



St. Peter's Church, East Bridgford.

Services.

HOLY COMMUNION:—

On all SUNDAYS (except first in Month) and HOLY DAYS at 8 a.m.
also after Morning Prayer on the Third Sunday in the Month.

On the first Sunday in the Month : Matins at 10 ; Choral Eucharist 10.45.

MORNING AND EVENING PRAYER:—

Sundays at 10.45, and 6.30 p.m.

Weekdays, Wednesday and Friday at 10 ; and 6.30 p.m. daily.

HOLY BAPTISM:—

First Sunday in month at 3, or at other Services on due notice.

CHURCHING OF WOMEN:—

Wednesday and Friday at 10, or before any Service on due notice.

SUNDAY SCHOOL AND CATECHISM:—

At 10 a.m. in the National School. Catechism in Church at 2.30.

THE HARVEST THANKSGIVING SERVICES were attended on Thursday, October 9th, and the Sunday following by good congregations. The Thankofferings which were given to the Sunday School Fund were £7 9s. 3d.

Thanksgiving services were held also by the Primitive Methodists and the Wesleyans respectively on the two previous Sundays.

THE MONTH of October has this year been quite remarkable for fine weather, though sometimes with cold wind from the north, and an occasional slight frost at night. No rain fell until the night of the 24th.

Nottingham Goose Fair was revived again in the first week of October, having been in abeyance during War-time.

FOREIGN MISSIONS. S.P.G.—The Rev. E. W. Blyth, from Burma, will give an address on behalf of the Society for the Propagation of the Gospel, in the School, at 7.30 p.m. on Thursday, November 6th.

It is sometime since the Society has been able to send us a missionary speaker, and it is hoped that this Meeting will be well attended.

The Collections in Church on Advent Sunday, November 30th, will be for Foreign Missions.

MEMORIAL TO THE FALLEN IN THE GREAT WAR.—The Memorial Cross which is to be erected in memory of those men of East Bridgford who have fallen in the great War 1914—1918, will be placed in a beautiful situation, at the corner of the Churchyard facing the Main village street and the Kneeton road. A rough sketch of the design which has been prepared by Mr. Ponting, F.S.A., Architect, may be seen in the Church porch. It will bear the names of all those who have fallen inscribed upon a metal plate.

In the Christian cemeteries on the fields of battle each known grave is marked by a stone, and absolute simplicity is aimed at: there is no difference of rank or position. But each cemetery is to have its tall cross of sacrifice and its stone of remembrance with the inscription "Their name liveth for evermore," as the central memorial in those gardens of rest. Here we shall be following the same idea, and gathering up as it were in one homely spot, all the twenty-two distant graves, known or unknown, of those who belong to us, and whose memory we honour.

The cost will probably be about £150, and Collectors have undertaken to call upon all, in order that all who are willing to share in it may have the opportunity of contributing towards this Memorial any sum, large or small, which they may feel able to give. The amounts given will not be published.

ALLOTMENTS ASSOCIATION.—At the Annual Meeting held on October 13th. The Officers and Committee were re-elected for the ensuing year.

It was agreed that Meetings should be held on the second Monday in each month at 7 o'clock, and that this arrangement, with a notice to be exhibited at the entrance to the Red Barn, would be sufficient intimation to the members. Mrs. J. Mills kindly offered to provide a notice board.

The next Meeting will accordingly be on Monday, November 10th, when a debate on "Pruning" will be held.

THE WOMEN'S INSTITUTE held a Meeting on Wednesday, October 8th, at 6.30 p.m., in the new wooden Army Hut, which has been erected in the west corner of Butt Close, for the purpose of the inauguration of the Room.

The Rector began the proceedings with a short dedication service and prayer for the blessing of God on the building and the objects for which it is to be used.

The Hon. Mrs. Handford, President of the Notts Federation of W.I., then addressed the members congratulating them upon the vigour of the East Bridgford Women's Institute, and declared the building to be now open.

Mrs. Hill proposed, and Mrs. M. Millington seconded a hearty vote of thanks to Miss Fox for her generous gift of the Hut, and Mrs. A. Mason, who is President of the Institute, asked Miss Fox to accept from the members an elegant walking-cane and a purse, and from the younger members a bouquet.

AN Exhibition of preserved fruits and vegetables and of sundry masterpieces of cookery was on view; and in the course of the evening, Mr. A. Mason gave a very interesting address on topics of the day.

Mr. John Wilkinson was thanked by the members for permitting the erection of the Hut in Butt Close.

An Exhibition and Sale is announced for October 27th, and the next monthly Meeting will be held on November 11th.

THE KING EDWARD CLUB is now open for the season, and will welcome new members. The expenses of last year were just cleared, with one guinea in hand.

THE FOOTBALL CLUB played its first match on Saturday, October 18th, against Bingham, and won after a good game by 5 goals to 3.

EAST BRIDGFORD SOUP KITCHEN.—Mr. A. P. Field, Treasurer, presents the following accounts of last winter's operations, from 29th November, 1918 to 4th April, 1919:—

DR.		Cr.	
£	s. d.	£	s. d.
To Cash, 13 distributions ..	10 15 8½	By cost of Provisions ..	7 12 6
		Fuel, Cleaning, etc. ..	1 6 2½
		Balance ..	1 17 0
	<hr/>		<hr/>
	£ 10 15 8½		£ 10 15 8½
	£		£
Balance, April 1918 ..	2 14 10	Stove and fitting ..	7 4 9
Donations ..	6 17 11	Savings Bank Deposit ..	4 5 0
Balance brought down ..	1 17 0		
	<hr/>		<hr/>
	£ 11 9 9		£ 11 9 9

CHURCH SERVICES.

- Nov. 1st. All Saints' Day. Holy Communion at 8.
 .. 2nd. 20th Sunday after Trinity. Mattins at 10. Holy Communion 10.45. (Choral).
 .. 9th. 21st Sunday after Trinity. Holy Communion at 8.
 .. 16th. 22nd Sunday after Trinity. Holy Communion at Midday.
 .. 23rd. 23rd Sunday after Trinity. Holy Communion at 8.
 .. 30th. 1st Sunday in Advent. St. Andrew, A. and M. Holy Communion at 8.
 Collections for Foreign Missions. S.P.G.

LIGHTING-UP TIMES for November corrected for East Bridgford, half an hour after sun-set:—

Nov. 1st, 5.3; 7th, 4.52 (Full Moon); 14th, 4.40; 22nd, 4.29 (New Moon); 30th, 4.22.

EXTRACTS FROM PARISH REGISTERS.

MARRIAGE.

Oct. 4th. Frederick Marshall and Elizabeth Pacey.

BURIAL.

Oct. 13th. John Coulson, aged 70 years.

*Summary of amounts received by Collections in Church, Contributions, &c.,
and expended, during the year ending Easter, 1919.*

Church Expenses (Churchwardens' Accounts) ...	£85 13 3
Alms to Sick and Poor ...	11 14 10
Diocesan Missionary Studentship, Ascension Day, 1918 ...	16 0
Foreign Missions (S.P.G.) ...	13 3 10
Mission to Jerusalem and the East (Good Friday, 1919) ...	1 11 8
Hospitals, January 26th, 1919 ...	8 8 0
Diocesan Church Extension, May, 1918 ...	11 0 0
Clothing Club Subscriptions ...	4 2 0
Coal Club Subscriptions ...	16 16 0
Sunday School ...	10 18 8
Church Building Society ...	10 0
National Society, Religious Education ...	1 0 0
Southwell House ...	13 0
Red Cross and Ambulance Society, Aug. 4th and Christmas, 1918 ...	13 2 10
Prisoners of War, June 29th, 1918 ...	8 18 9
Church Army Huts ...	3 16 0
Church Defence Committee ...	5 0
Waifs and Strays Catechism Collection ...	1 5 10
	<hr/>
	£193 15 8

July, 1919.

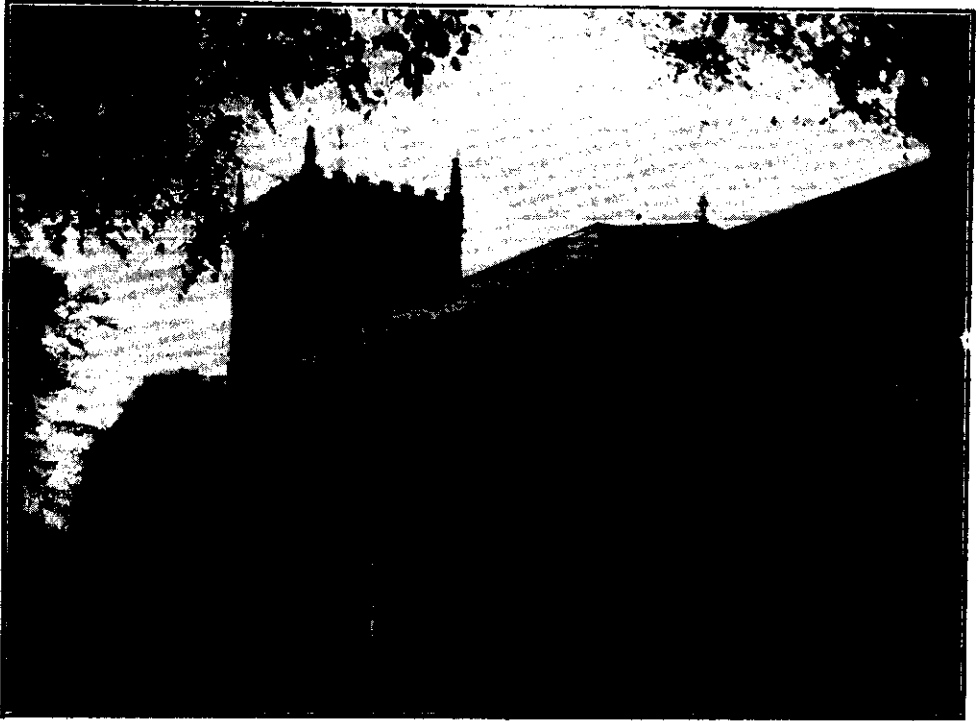
A. D. HILL, RECTOR.

Time Table for Nov. for East Bridgford of Trains to and from Nottingham.

Bingham.	Leave		Arrive Nottingham		Leave Nottingham		Arrive	
	Bingham.	Lowdham.	G.N.R.	M.R.	G.N.R.	M.R.	Bingham.	Lowdham.
—	7.0	—	7.20	—	5.55	—	6.18	—
7.30	—	7.54	—	—	6.35	—	—	6.50
—	7.46	—	8.5	—	*6.40	—	7.3	—
—	8.30	—	8.50	—	—	7.30	—	7.49
8.20	—	8.45	—	—	7.20	—	7.43	—
*9.2	—	9.26	—	—	—	8.28	—	8.47
9.27	—	9.51	—	—	9.40	—	10.5	—
—	10.1	—	10.20	—	—	11.25	—	11.47
—	11.33	—	11.52	—	11.30	—	11.53	—
12.16	—	12.40	—	—	—	12.55	—	1.13
—	1.50	—	2.10	—	—	1.32	Thurs. & Sat.	1.52
2.2	—	2.26	—	—	*1.50	—	2.13	—
—	2.4	—	2.27	—	—	2.5	—	2.24
*3.47	—	4.11	—	—	2.15	—	2.35	—
—	4.10	—	4.30	—	3.0	—	3.23	—
4.58	—	5.22	—	—	—	4.45	—	5.4
—	6.51	except Saturday	6.50	—	*5.30	—	5.53	—
6.10	—	6.34	—	—	—	5.20	—	5.39
7.5	—	7.29	—	—	6.8	—	6.38	—
—	7.52	—	7.50	—	—	6.12	except Saturday	6.31
8.32	—	8.55	—	—	—	6.30	—	6.50
8.50	—	9.14	—	—	7.40	—	8.9	—
—	9.49	Thurs. & Sat.	10.5	—	8.45	—	9.11	—
—	—	—	—	—	—	8.55	—	9.14
—	—	—	—	—	10.15	—	10.39	—
SUNDAYS.								
—	1.4	—	1.25	—	—	10.25	—	10.44
3.3	—	3.27	—	—	2.10	—	2.33	—
—	6.49	—	7.10	—	—	8.30	—	8.49
8.35	—	9.0	—	—	9.0	—	9.23	—

N.B. - All the G.N.R. trains stop at London Road (High Level Station) as well as at the Victoria Station.
* Newark trains.

EAST BRIDGFORD MAGAZINE.



St. Peter's Church, East Bridgford.

Services.

HOLY COMMUNION:—

On all SUNDAYS (except first in Month) and HOLY DAYS at 8 a.m.
also after Morning Prayer on the Third Sunday in the Month.

On the first Sunday in the Month : Matins at 10 ; Choral Eucharist 10.45.

MORNING AND EVENING PRAYER:—

Sundays at 10.45, and 6.30 p.m.

Weekdays, Wednesday and Friday at 10 ; and 6.30 p.m. daily.

HOLY BAPTISM:—

First Sunday in month at 3, or at other Services on due notice.

CHURCHING OF WOMEN:—

Wednesday and Friday at 10, or before any Service on due notice.

SUNDAY SCHOOL AND CATECHISM:—

At 10 a.m. in the National School. Catechism in Church at 2.30.

CHRISTMAS TIDE.—On Christmas Day, which falls on a Thursday, there will be services at 8, 10.45 and 7 p.m.

On the Sunday after Christmas, Holy Innocents' Day, a world-wide appeal is to be made, that prayers may be offered and Collections made for the children suffering in the famine-stricken areas.

On Jan. 4th, the Second Sunday in the twelve-days festival of Christmas, there will be a Choral Celebration of the Holy Communion at 10.45.

The following is taken from the appeal signed by the Archbishops, and the presidents of the various free Churches. It is also made throughout the Anglican Church in the Colonies, the Roman Church, the Orthodox Eastern Churches, America and Scandinavia; so that we have reason to believe a united effort will be made throughout the Christian Churches of the World on that appropriate Sunday.

"We desire to recommend that at our services on Sunday, December 28th, being Holy Innocents' Day, prayers should be offered and the collections given for the relief of sufferers, especially young children, in the famine-stricken areas of Europe and Asia Minor.

During the five years of war a similar appeal was made about this time for the sick and wounded; and on each occasion it met with a generous response. Peace has now been signed, and there is no longer the same need to renew the former request.

The war is over, but not its sufferings. "Not only grown-up men (and women," said Lord Curzon a short time ago, "but hundreds and thousands of small children, are in daily want of many of the necessities of life. . . . It is no exaggeration to say that the Western world is faced in the present with destitution, disease, and despair to a degree unprecedented in modern times." "There are at the present moment," said Mr. Hoover recently of these young children, "more than three and a half millions in Europe who will die, if they are not provided with milk." The Prime Minister, Lord Robert Cecil, and General Smuts have also spoken to the same effect.

These are grave statements, and the reports of the different official and voluntary missions bear them out with abundant detail. The accounts they give of the conditions which prevail among our Allies in Serbia, Czecho-Slovakia, Montenegro, Poland—or again in Armenia and the Caucasus—are appalling. And in Germany, and notably in Austria, the same problems exist. To quote Lord Curzon again, "post-war conditions are in some cases even more terrible than those of war itself."

These facts constitute a solemn call to the whole of Christendom. It is our earnest hope that none may be found wanting in the great task of mercy and reconciliation."

CHURCH SERVICES IN DECEMBER.

Dec. 7th.	2nd Sunday in Advent.	Mattins at 10.	Holy Communion 10.45. (Choral).
.. 14th.	3rd Sunday in Advent.	Holy Communion at 8.	
.. 21st.	4th Sunday in Advent.	St. Thomas, A. & M.	Holy Communion at Midday.
.. 25th.	Thursday. CHRISTMAS DAY.	Holy Communion 8.	Mattins and Holy Communion 10.45. Evensong 7.
.. 28th.	1st Sunday after Christmas.	Holy Innocents.	Holy Communion at 8.
1920.			
Jan. 1st.	New Year's Day.	Circumcision of our Lord.	Holy Communion at 8.
.. 4th.	2nd Sunday after Christmas.	Mattins 10.	Holy Communion at 10.45 (Choral).
.. 6th.	Epiphany.	Holy Communion at 8 a.m.	

THE WAR MEMORIAL.—The collectors have now gathered in most of the contributions for the Memorial Cross to be erected at the Churchyard corner. If there are any who have not been asked, or any friends not resident in East Bridgford, who would like to take a part in our Memorial, it is hoped that they will send in contributions to the Rector before the end of the year.

S.P.G.—The Rev. E. W. Blyth, on Thursday, Nov. 7th, delivered a very interesting address on his work in Burma, among the very primitive race of Karens, who occupy the hill country on the borders of Burma and Siam. A collection of £2 was made at the close.

St. Andrew's Day, which is appointed as a time of Special Intercession for Missions, coincided this year with the First Sunday in Advent, when the subject was specially brought before us in the services and collections were made for the Foreign Missions of S.P.G.

CHURCH FLAGS.—By small contributions, given for the purpose, or placed in the Churchbox, the sum of £8 0s. 8d. has been gathered and expended in flags for the Church Tower, a S. George's Cross and a Union Jack. The Church box has provided, during two years, £3 3s. 7d. of this sum.

ALLOTMENTS ASSOCIATION.—At the Meeting on November 10th, a debate on Pruning took place. Mr. E. Coville, who had carefully marshalled his facts, maintained from his own experience the desirability of leaving many important kinds of apples to natural growth. Thanks were given to him for the pains he had taken to present the subject, which was discussed from various points of view.

Members are requested to attend the next monthly Meeting, at 7 p.m. on Monday, December 8th, and to be prepared to give their orders for potatoes and for agricultural seeds, printed lists of which will be supplied at the meeting.

WOMEN'S INSTITUTE.—An Exhibition was held by the Institute on Monday, October 27th, in the Temperance Hall. The room was nicely decorated, and an excellent show was provided of garden produce, needle-work, Hawkey dresses, an art stall, and many other things of domestic interest.

An exhibition and sale organized by the Notts Federation of W.I. was opened in Nottingham on Wednesday, October 29th, by the Duchess of Newcastle, in which the East Bridgford Institute took part, and won the challenge tea-urn presented by the Federation to the Institute which gained most prizes at the Exhibition.

The prize-winners were:—

Stilton Cheese: 1 Miss Clough. Soft cheese: 2 Mrs. Cartwright. Eggs: 2 Mrs. Millington, commended Mrs. Baguley, Mrs. M. Hall. Cakes: 1 Mrs. Millington, 2 Mrs. J. Upton. Bread: 2 Miss Millington. Bottled Fruits: (soft) 1 Mrs. J. Upton; (hard) 2 Mrs. Coville. Marmalade: 2 Mrs. Millington. Jam: 2 Miss Marriott. Pickles: 1 Miss Marriott. Chutney: 2 Mrs. Mussell. Sauce: 1 Miss Barker. Dried Fruits: 1 Mrs. Millington. Crystallized fruits: 1 Miss Fox, 2 Miss K. Allwood. Baskets: 2 Miss Marriott. Toys: 2 Miss Fox; Fancy articles from Waste: 1 Mrs. Millington, 2 Mrs. H. Curtis. Essay, 300 words, 1 Miss Marjorie Mason.

THE PARISH COUNCIL having taken, as we hope, effective steps to call the attention of the Coal Controllers to the supply of this Village, and the government having announced a reduction of 10/- in the price of domestic coal, there should now be less of the difficulties which we have hitherto undergone in the Coal supply.

Following last year's plan, a meeting for Women will be held each Thursday afternoon, at the Rectory, from 2.30 to 4, for any who will value a short time of Rest and Recreation.

LIGHTING-UP TIMES for December corrected for East Bridgford, half an hour after sun-set :—

December 7th, 4.17 (Full Moon); 14th, 4.15; 22nd, 4.16 (New Moon); 30th, 4.22.

EXTRACTS FROM PARISH REGISTERS.

BAPTISMS,

- Nov. 9th. Herbert Arthur Bellamy, son of Arthur Bellamy and Bertha Shipman.
 „ 15th. Mary, daughter of Charles and Hilda Catherine Moor.
 „ 16th. John Bennett, son of John Cecil and Annie Pickford.

BURIAL.

- Nov. 3rd. Clara Fox, aged 37 years.

Time Table for Nov. for East Bridgford of Trains to and from Nottingham.

Leave		Arrive Nottingham		Leave Nottingham		Arrive	
Bingham.	Lowdham.	G.N.R. Victoria.	M.R.	G.N.R. Victoria.	M.R.	Bingham.	Lowdham
—	7.0	—	7.20	5.55	—	6.18	—
7.30	—	7.54	—	—	6.35	—	6.50
—	7.45	—	8.5	*6.40	—	7.3	—
—	8.30	—	8.50	—	7.30	—	7.49
8.20	—	8.45	—	7.20	—	7.43	—
*9.2	—	9.26	—	—	8.28	—	8.47
9.27	—	9.51	—	9.40	—	10.5	—
—	10.1	—	10.20	—	11.25	—	11.47
—	11.33	—	11.52	11.10	—	11.53	—
12.16	—	12.40	—	—	12.55	—	1.13
—	1.50	—	2.10	—	1.32	Thurs. & Sat.	1.52
2.2	—	2.26	—	*1.50	—	2.13	—
—	2.4	—	2.27	—	2.5	—	2.24
*3.47	—	4.11	—	2.15	—	2.35	—
—	4.10	—	4.30	3.0	—	3.23	—
4.58	—	5.22	—	—	4.45	—	5.4
—	6.51	except Saturday	6.50	*5.30	—	5.53	—
6.10	—	6.34	—	—	5.20	—	5.39
7.5	—	7.29	—	6.8	—	6.38	—
—	7.52	—	7.50	—	6.12	except Saturday	6.31
8.32	—	8.55	—	—	6.30	—	6.50
8.50	—	9.14	—	7.40	—	8.9	—
—	9.49	Thurs. & Sat.	10.5	8.45	—	9.11	—
—	—	—	—	—	8.55	—	9.14
—	—	—	—	10.15	—	10.39	—
SUNDAYS.							
—	1.4	—	1.25	—	10.25	—	10.44
3.3	—	3.27	—	2.10	—	2.33	—
—	6.49	—	7.10	—	8.30	—	8.40
8.35	—	9.0	—	9.0	—	9.23	—

N.B. — All the G.N.R. trains stop at London Road (High Level Station) as well as at the Victoria Station.
 * Newark trains.