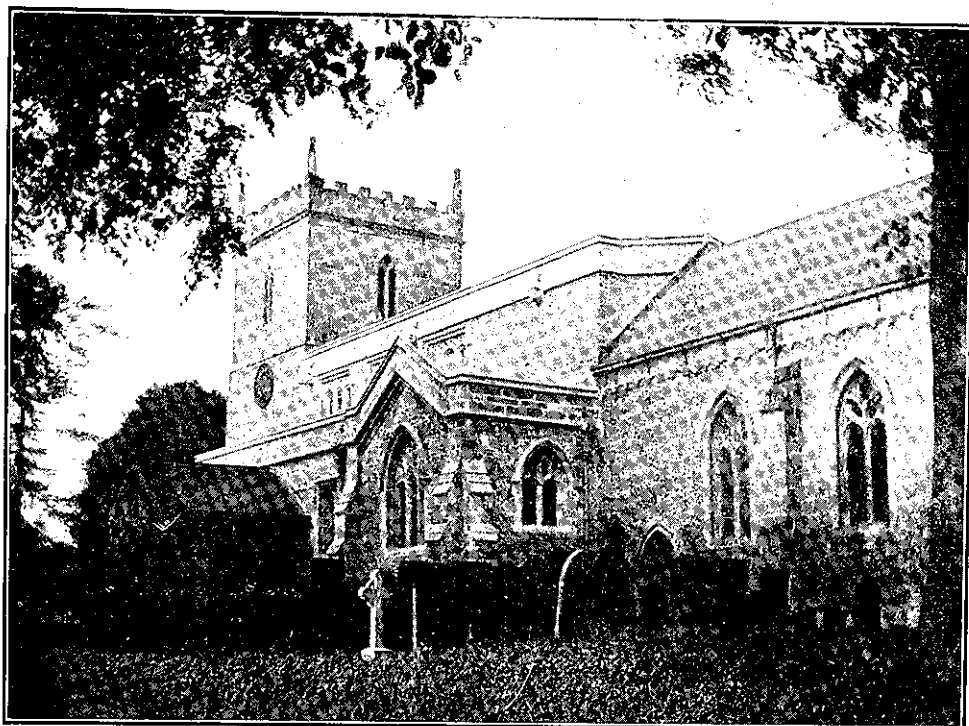


EAST BRIDGFORD MAGAZINE.



St. Peter's Church, East Bridgford.

Services.

HOLY COMMUNION:—

On the first Sunday in the Month : Matins at 10 ; Choral Eucharist 10.45.
After Morning Prayer on the Third Sunday in the Month.
On all other SUNDAYS and HOLY DAYS at 8 a.m.

MORNING AND EVENING PRAYER:—

Sundays at 10.45, (10, on first Sunday in Month) and 6.30 p.m.

HOLY BAPTISM:—

First Sunday in month at 3, or at other Services on due notice.

CHURCHING OF WOMEN:—

Wednesday and Friday at 10, or before any Service on due notice.

SUNDAY SCHOOL AND CATECHISM:—

At 10 a.m. and 2.30 p.m. in the National School. Catechism in Church
at 2.30.

A. D. HILL, Rector.

1925.

A happy New Year to you all. The year that is now opening will be marked by many new things and events of importance. This is an era of road making. Let us try to make it a year of renewal and progress in our own life and growth in character : let us go forward in confidence with the words of Ps. v. 8 in our hearts, "Lead me, Lord, in Thy righteousness : make Thy way plain before my face."

Probably during this year the new lock will be opened for use, and the Trent will again become a highway, from which we may hope East Bridgford will find advantage and a new wharf on the riverside.

The new bridge too will soon be begun. It will be a fine structure of re-inforced concrete with three arches each over 100ft span, and two smaller land arches for flood water ; approached on either side by a raised level causeway for the new road to be made from the Foss to the corner by Gunthorpe Hall. The making of the causeway has already been begun.

The conquest of the Trent may take us back in imagination to scenes of the past. Picture a group of ancient Britons in sheepskin coats, barelegged, making their way down the old track from Woolsthorp in the Belvoir hills to the ford across the river. Picture again a group of prentices and farm lads of the 13th century enjoying a holiday across the river, when a ferry had been set up by the Lord of the Manor. It was maintained by the Prior of Thurgarton, to whom he granted his "mill and the Passage of Briggeford."

And we must not forget to be grateful for the bridge which has served for 50 years to relieve our isolation and open a way to the north of the Trent. Tolls were necessary then, but now, from the increased traffic and the wider area to be served, the money will be raised in other ways ; and the bridge will be free for all on foot or on wheel. Let us anticipate a little, and commemorate the event with a song.

THE PASSAGE OF THE TRENT.

<p>A ford, a ford ! who fears a wetting ? Across the Trent we must be getting And find a salmon in the netting, While stream runs low.</p> <p>A boat, a boat ! now to the ferry, We lads will over and be merry, From bank to bank we'll drive the wherry In flood or flow.</p>	<p>A bridge, a bridge ! to last for ever ; A bridge for dames to cross the river, Nor wet their shoon, nor pay their stiver ;— Toll-free we go !</p> <p>The Trent is passed ! no barrier shewing No traveller hindered by its flowing For man has found new ways of going To and fro.</p>
---	---

HOSPITAL SUNDAY, is fixed for January 25th, 1925.

THE PAROCHIAL CHURCH MEETING, for the annual Election of the Church Council, the presentation of the Church accounts, and the appointment of Sidesmen, etc., will be held on Tuesday, January 27th, 1925, in the School at 7 p.m. All whose names are upon the Electoral roll are entitled to attend and should do so to show an interest in Church affairs.

ALLOTMENT ASSOCIATION.—The next meeting will be held on the second Tuesday in the month, January 13th, at 7 p.m. It is hoped that members will be able to state their requirements for vegetable and garden seeds.

WOMEN'S INSTITUTE.—The Annual General Meeting was held on Dec. 9th. A lively ballot took place for the 19 places on the Committee for 1925, and the officers appointed were Miss Fox, President, Mrs. Mason, Vice-President, Mrs. Hall and Mrs. W. Jones, Secretaries, Mrs. M. Millington, Treasurer. A report of the year's activities was read, and a satisfactory balance sheet presented. The January Social Meeting will be held in the Temperance Hall on Thursday, January 8th.

TENNIS CLUB.—We are pleased to hear that the Club, now in its second year, is prosperous. Its income has been £65 7s. 7d. and it has a balance in hand of £2 17s. 2d. The Hon. Secretary is Mr. A. Jollands.

THE EAST BRIDGFORD SICK AND ANNUAL SOCIETY held its third annual Meeting at the Keindeer Inn Club room on December 4th. It has now increased to 50 members. The Committee will be pleased to propose new members at the fortnightly meetings, beginning January 5th. For further information application may be made to the Secretary, Mr. F. O. Green.

CHURCH SERVICES FOR JANUARY, 1925.

Jan. 4th. 2nd Sunday after Christmas. Matins 10. Holy Communion 10.45 (choral).
 „ 6th. The Epiphany. Holy Communion at 10.30.
 „ 11th. 1st Sunday after Epiphany. Holy Communion at 8.
 „ 18th. 2nd Sunday after Epiphany. Holy Communion at mid-day.
 „ 25th. Conversion of S. Paul. Holy Communion at 8.
 Feb. 1st. 4th Sunday after Epiphany. Matins 10. Holy Communion 10.45 (choral).

EXTRACTS FROM PARISH REGISTERS.

BAPTISM.

Nov. 26th. Ruby, daughter of William and Alice Hibbard.

BURIALS.

Dec. 1st. Annie Elizabeth Smith, aged 71 years.
 „ 12th. Elizabeth Stokes, aged 72 years.

TIMES OF SUNSET at East Bridgford for January. Lighting up one hour later. Number plate lights half an hour later :—

Jan. 1st, 3.55 ; 10th, 4.6 (Full Moon) ; 17th, 4.17 ; 24th, 4.29 (New Moon) ; 31st, 4.42.

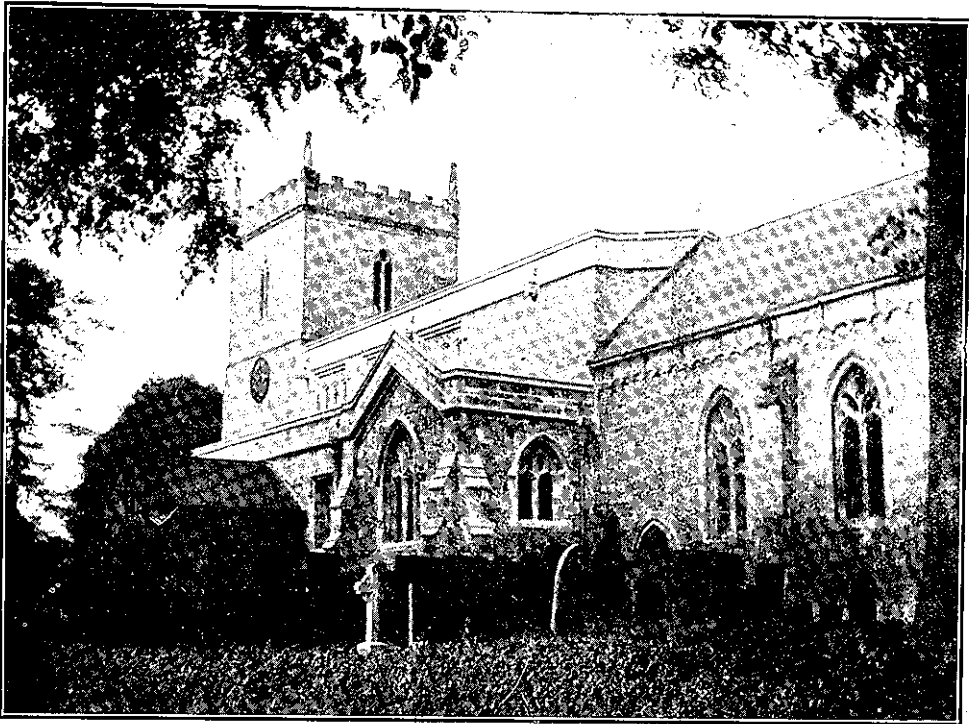
RAILWAY TIME TABLE to and from Nottingham for January :—

Leave Bingham.	Leave Victoria G.N.R.	Leave Lowdham.]	Leave Nottingham M.B.
7.26	5.25	7.4	7.23
8.16	6.20	7.47	8.22
9.0	7.15	8.25	9.38
9.30	9.40	9.52	11.25
12.5	11.43	11.14	12.55
1.58	1.25 (Sat)	1.49	1.28 (Th. & Sat)
2.30 (Sat)	1.50	1.57	1.40
3.14	2.20	3.9	2.20
3.50	2.57	4.36	4.48
4.45	5.0	6.15	5.20
6.15	5.30	7.52	6.12
6.55	6.16	8.20	6.30
7.50	7.40	9.52 (Th. & Sat)	7.25
8.40	9.0 [Sat.]		8.50 (Sat)
9.20	10.25 (exc. Wed. & Sat.)		9.0
	11.0 (Wed. & Sat.)		10.45

SUNDAYS.

9.26	10.25	1.8	10.25
2.21	12.15	5.58	2.25
3.36	7.25	8.12	8.30
8.38	0.15		

EAST BRIDGFORD MAGAZINE.



St. Peter's Church, East Bridgford.

Services.

HOLY COMMUNION:—

On the first Sunday in the Month : Matins at 10 ; Choral Eucharist 10.45.

After Morning Prayer on the Third Sunday in the Month.

On all other SUNDAYS and HOLY DAYS at 8 a.m.

MORNING AND EVENING PRAYER:—

Sundays at 10.45, (10, on first Sunday in Month) and 6.30 p.m.

HOLY BAPTISM:—

First Sunday in month at 3, or at other Services on due notice.

CHURCHING OF WOMEN:—

Wednesday and Friday at 10, or before any Service on due notice.

SUNDAY SCHOOL AND CATECHISM:—

At 10 a.m. and 2.30 p.m. in the National School. Catechism in Church at 2.30.

A. D. HILL, Rector.

THE DIVISION OF THE DIOCESE.—The Bishop makes his appeal to every parish in this large Diocese to help by contributions to this Fund which he hopes to complete in the course of this year.

The Diocese was founded 40 years ago, and consists of the two counties of Nottinghamshire and Derbyshire, which were united to form a diocese in order to relieve the Dioceses of Lincoln and Lichfield. Since that time the population has nearly doubled, now a million and a half, with 500 parishes and 700 clergy. The area is so large that it is impossible for a Bishop to know and visit these as a Father in God, however willing and strong he may be.

We have had as Bishops of Southwell, two devoted men who have been able and ready to contribute largely out of their own private means. It is for us to take our share now, and help to relieve our Bishop of part of this burden. Both counties will benefit by the division, for each county will have its own Bishop, instead of only a share of one, so that each should be ready to make its contribution. The Measure for the Division of the Diocese has been approved by the Church Assembly, and has become an Act of Parliament. But it cannot take effect until the required sum is actually raised.

I am therefore asking you to make it your special effort this Lent, that we may do as many other parishes are doing, and send up a good contribution to the fund by Easter.

A.D.H.

The month of January seems to have been fully occupied by tea parties, whist drives, and hospitable entertainment. With Sunday School Christmas parties, the children have specially come off well. On Jan. 6th, the British Legion entertained all the children under 14, to the number of 138, at tea in the Temperance Hall.

A Whist Drive was held on Jan. 15th, by which £10 was raised for the General Hospital.

The Christmas Carol Singers have sent £4 2s. to the Nottingham Women's Hospital.

The Bishop of Southwell will hold a Confirmation at East Bridgford on Tuesday, April 7th. The Rector will be glad to know the names of those who desire to be presented, as early as possible during February. There may be older persons who desire to avail themselves of this opportunity, and the Rector will be glad if they will let him know in good time.

SCHOOL ENTERTAINMENT.—The children of the School will give an Entertainment in the Temperance Hall, on Tuesday, Feb. 24th, at 7 p.m. Tickets 2/- (reserved seats), 1/6 and 1/-. The proceeds will be given towards the cost of the new piano and the improvements in the school yard, and we hope the children's efforts will be well supported.

ALLOTMENT ASSOCIATION.—Members are requested to be ready with their list of requirements of potatoes and vegetable seeds, at the monthly meeting fixed for Tuesday, Feb. 10th, at 7 p.m.

THE ANNUAL CHURCH MEETING was held on January 27th, when the following were elected to serve for this year on the Church Council:—Mr. C. Allwood, Mrs. Beaumont, Mrs. Cartwright, Mr. E. E. Coville, Mr. R. W. Green, Mr. W. Jones, Mr. W. Lander, Mr. C. Millington, Mr. E. W. Millington, Miss M. E. Robinson, Mr. A. B. Shipman. The sidesmen

were re-appointed:—Messrs. Allwood, Coville, Jesson, W. Jones, Lander, C. Millington, Sharman, and Turner.

The Church accounts for 1924 were presented, showing a balance in hands of the Churchwardens of £22 14s. 5d.

THE HOSPITAL SUNDAY Collections in Church, on Jan. 25th, amounted to £9 7s. 6d. of which £1 1s. is to be given to the Women's Hospital, the Children's Hospital, and the Eye Infirmary, and £6 4s. 6d. to the General Hospital.

CHURCH SERVICES FOR FEBRUARY.

Feb. 1st.	4th Sunday after Epiphany. Mattins 10. Holy Communion 10.45 (choral).
„ 2nd.	Purification B.V.M.
„ 8th.	Septuagesima. Holy Communion at 8. Collection for S. Paul's.
„ 15th.	Sexagesima. Holy Communion at mid-day.
„ 22nd.	Quinquagesima. Holy Communion at 8.
„ 25th.	Ash Wednesday. Holy Communion 8. Services 11 and 7. Alms for Southwell House.
Mar. 1st.	1st Sunday in Lent Mattins 10. Holy Communion 10.45 (choral).

EXTRACTS FROM PARISH REGISTERS.

BURIALS.

Dec. 29th, 1924.	George Hunt, aged 67 years.
Jan. 8th, 1925.	Frederick Thornton, aged 59 years.
„ 27th, „	William Atvey, aged 57 years.

TIMES OF SUNSET at East Bridgford for February. Lighting up one hour later. Number plate lights half an hour later:—

Feb. 8th, 4.57 (Full Moon); 16th, 5.14; 23rd, 5.27 (New Moon).

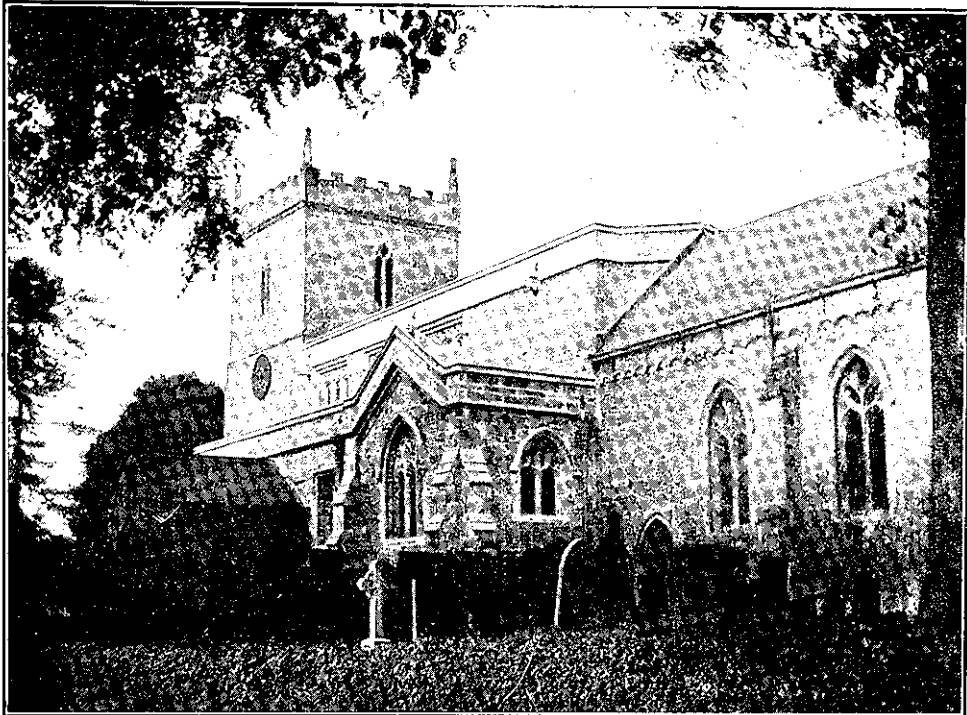
RAILWAY TIME TABLE to and from Nottingham for February:—

Leave Bingham.	Leave Victoria G.N.R.	Leave Lowdham.	Leave Nottingham M.R.
7.26	5.25	7.4	7.23
8.16	6.20	7.47	8.22
9.0	7.15	8.25	9.38
9.30	9.40	9.52	11.25
12.5	11.43	11.14	12.55
1.58	1.25 (Sat)	1.49	1.28 (Th. & Sat)
2.30 (Sat)	1.50	1.57	1.40
3.14	2.20	3.9	2.20
3.50	2.57	4.36	4.48
4.45	5.0	6.15	5.20
6.15	5.30	7.52	6.12
6.55	6.16	8.20	6.30
7.50	7.40	9.52 (Th. & Sat)	7.25
8.40	9.0 [Sat.]		8.50 (Sat)
9.20	10.25 (exc. Wed. & Sat)		9.0
	11.0 (Wed. & Sat)		10.45

SUNDAYS.

9.20	10.25	1.8	10.25
2.21	12.15	5.58	2.25
3.36	2.25	8.12	8.30
8.38	0.15		

EAST BRIDGFORD MAGAZINE.



St. Peter's Church, East Bridgford.

Services.

HOLY COMMUNION :—

On the first Sunday in the Month : Matins at 10 ; Choral Eucharist 10.45.

After Morning Prayer on the Third Sunday in the Month.

On all other SUNDAYS and HOLY DAYS at 8 a.m.

MORNING AND EVENING PRAYER :—

Sundays at 10.45, (10, on first Sunday in Month) and 6.30 p.m.

HOLY BAPTISM :—

First Sunday in month at 3, or at other Services on due notice

CHURCHING OF WOMEN :—

Wednesday and Friday at 10, or before any Service on due notice.

SUNDAY SCHOOL AND CATECHISM :—

At 10 a.m. and 2.30 p.m. in the National School. Catechism in Church at 2.30.

A. D. HILL, Rector.

LENT 1925.—This month of March is entirely within the season of Lent. As I have already explained, I propose to ask you to make a contribution to the fund for the Division of the Diocese, as your special act of self-denial during this Lent. Any contributions for this purpose may be placed in the box on the left hand as you enter the Church, which will be set aside for that object; or they may be enclosed in an envelope and sent in to me or collectors. In any case contributions will be sent up as one Lenten offering from this parish, in response to the Bishop's appeal.

A. D. H.

ST. PAUL'S CATHEDRAL.—Our readers are aware that an appeal has been made for the preservation of the great Cathedral Church of London, which has been the scene of many national occasions for thanksgiving and prayer. It was built by Sir Christopher Wren to replace the ancient Cathedral destroyed in the great fire of London, and is one of the most notable and magnificent buildings of the world. A splendid response has been made, now amounting to about £240,000, and a large number of parishes have sent collections, as we did from East Bridgford on Feb. 8th.

It is interesting to note that the first gift of the Midlands to the Church in London was when Oswy, the Christian King of Northumbria, sent Cedd, who was then working as a missionary among us Mid-Angles, to re-evangelize the East Saxons, who had received the Christian faith 50 years before but had now rejected it and driven out their Bishop. Cedd became Bishop of London, their chief town, in 656 A.D., and permanently refounded the Church where St. Paul's now stands.

A second gift from the Midlands is recorded in our Parish Registers, after the great fire of London, as it is also in many other parishes. We have these two entries;—

Oct. 10th, 1666. Being the public Fast collected for the City of London £ 1 14s 3d.

Sept. 28th, 1678. Collected towards ye Rebuilding of S Pauls London, ye sum of £ 1 3s 1d.

And now for the third time we have sent a gift, which by a curious coincidence is exactly double the sum sent up 247 years ago for the re-building of St. Paul's, being £2 6s 2d.

THE ANNUAL GENERAL MEETING of the Cricket Club was held in the Hut on Friday, Feb. 6th. In the absence of Mr. R. H. Swain, President, the chair was taken by Mr. A. H. Smith. The officers for 1925 were appointed:—President, R. H. Swain, Esq.; Vice-Presidents, A. Hayday, Esq. M.P., Dr. Duff, W. E. Claye, Esq., R. K. Beaumont, Esq., F. S. Molyneux, Esq., J. Lodder, Esq., Miss Fox; Treasurer, Rev. A. D. Hill; Captain, Mr. W. H. Foster; Vice-Captain, Mr. F. Collishaw; Committee, Messrs. J. Kemp, J. Lodder, W. Lodder, N. Rhodes, A. H. Smith, J. Wilkinson; Secretary, Mr. G. V. Manchester. The accounts were passed showing a balance of £5 0s 10d in hand. It was agreed that members' subscriptions should be 6s per annum; under 18 years, 3s.

HORTICULTURAL SOCIETY.—A General Meeting was held in the Hut on Feb. 16th, the Rector being in the Chair. Mr. R. K. Beaumont in the absence of the Treasurer presented the accounts which showed a favourable balance of £35 7s 5d. The officers elected are President, Rev. A. D. Hill; Treasurer, R. H. Swain; Secretary, A. H. Smith; Assistant Secretary, E. W. Millington; Secretary Poultry Section, J. Kemp; Committee, Messrs. C. Bullers, E. Coville, W. C. Millington, J. Pickford, C. Pickford, F. Sharp, A. B. Shipman, F. O. Green, T. Knight, J. Mussell, J. Lodder, E. Fox, W. Savage,

A. Knight, F. Thornton, G. Priestley, J. Cox, C. Coulson, G. Bateman, B. Smith, W. Harrison, F. Chapman.

The Flower Show will be held on Tuesday, June 30th, and it was agreed that the Poultry Classes be continued with the addition of separate prizes for cock and hen in the Utility Class. Class A. to be open to the adjoining villages of CarColston, Shelford, Newton and Kneeton: a prize for a tray of 4 vegetables to be given for each of the same four villages, for Class B and C; together with a championship prize for the best tray of the five villages. The Sports to be dropped for this year.

ALLOTMENTS ASSOCIATION.—At the next monthly meeting on Tuesday, March 10th 7 o'clock, it is hoped that we shall have news of our seed potatoes.

CHURCH SERVICES FOR MARCH.

Mar. 1st.	1st Sunday in Lent.	Mattins 10.	Holy Communion 10.45 (choral).
" 8th.	2nd Sunday in Lent.	Holy Communion at 8.	
" 15th.	3rd Sunday in Lent.	Holy Communion at mid-day.	
" 22nd.	4th Sunday in Lent.	Holy Communion at 8.	
" 25th.	Annunciation of the Blessed Virgin Mary.	Lady Day.	
" 29th.	5th Sunday in Lent.	Holy Communion at 8.	

EXTRACTS FROM PARISH REGISTERS.

BURIAL.

Feb. 19th. John Raynor, aged 58 years.

TIMES OF SUNSET at East Bridgford for March. Lighting up one hour later. Number plate lights half an hour later:—

Mar. 2nd, 5.42; 10th, 5.57 (Full Moon); 17th, 6.10; 24th, 6.21 (New Moon).

SUMMARY OF CHURCH ACCOUNTS FOR 1924.

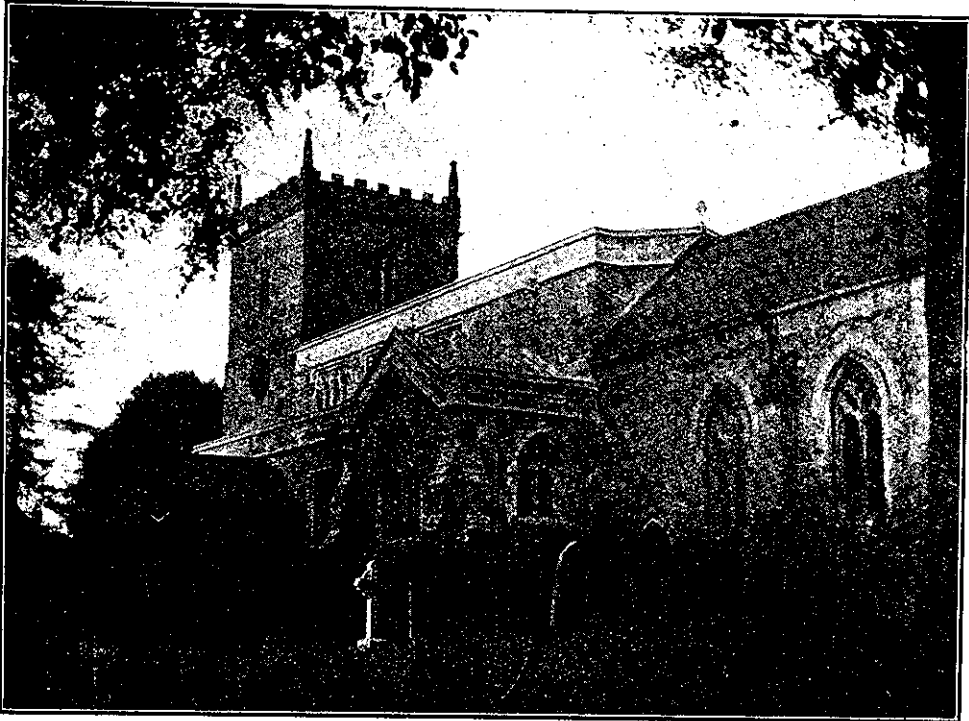
Presented at the Annual Parochial Church Meeting, held on January 27th, 1925.

Receipts.	£ s. d.	Expenditure	£ s. d.
Brought forward from 1923 ..	28 13 0½	Church Maintenance ..	92 14 11½
Free-will offerings ..	32 6 6	Repairs to Organ ..	36 0 0
Collections for expenses ..	72 4 0½	Alms for Sick and Poor ..	5 8 8½
Organ Fund, Collections and ..		Sunday School (2 years) ..	10 7 2
Donations ..	27 3 7	Hospitals ..	8 13 0
Collections for special purposes ..	40 11 11½	Diocesan and Central Church ..	
Sundries ..	10 8	Funds ..	12 0 0
		Foreign Missions ..	7 1 6
		Other Societies ..	1 19 10
		Prayerbooks and Psalters ..	4 10 2
			<hr/>
		Balance in hand ..	178 15 4
			<hr/>
	<u>£ 201 9 9½</u>		<u>201 9 9½</u>

R. K. BEAUMONT and F. S. MOLYNEUX, Churchwardens.

The First Quarterly Meeting of the Church Council will be held at the Rectory, on Tuesday, March 3rd, at 8 p.m.

EAST BRIDGFORD MAGAZINE.



St. Peter's Church, East Bridgford.

Services.

HOLY COMMUNION:—

On the first Sunday in the Month : Matins at 10 ; Choral Eucharist 10.45.

After Morning Prayer on the Third Sunday in the Month.

On all other SUNDAYS and HOLY DAYS at 8 a.m.

MORNING AND EVENING PRAYER:—

Sundays at 10.45, (10, on first Sunday in Month) and 6.30 p.m.

HOLY BAPTISM:—

First Sunday in month at 3, or at other Services on due notice.

CHURCHING OF WOMEN:—

Wednesday and Friday at 10, or before any Service on due notice.

SUNDAY SCHOOL AND CATECHISM:—

At 10 a.m. and 2.30 p.m. in the National School. Catechism in Church at 2.30.

A. D. HILL, Rector.

CONFIRMATION.—The Bishop of the diocese will hold a Confirmation in East Bridgford Church on Tuesday, April 7th, at 3 o'clock. The church directs that "everyone shall have a godfather or godmother as a witness of their Confirmation." This emphasises the fact that Confirmation is a corporate act of the whole body of Christ's Church, and that when by the hands of the chief minister a special blessing is signified, the whole society by its representatives is assisting in prayer for those who are now being admitted to full membership. It is therefore a good and proper thing for those who can do so to attend the service, not merely to remind themselves of their own confirmation, but that they may take their own part in the solemn rite.

The Rector greatly regrets that under the Doctor's advice he has been unable to get about or to undertake much that he has desired to do, during this season of Lent. He is grateful for the consideration that has been shown, and hopes soon to become more efficient in carrying out his duties. It is therefore hardly possible to fix definitely beforehand the services of Holy Week and Easter, but at least it is intended, by God's help, that on Good Friday, there will be services at 11 a.m. and 7 p.m. and that on Easter Day, there will be Celebrations of the Holy Communion at 7 a.m. and at 8 (with music), and at mid-day.

DIVISION OF THE DIOCESE.—Will those who have undertaken to make a Lenten act of self-denial by contributing to the Bishop's fund for this purpose, kindly remember to send in their contributions by Easter. The envelopes used for this purpose may be placed in the Free-will Offering box, or sent to the Rector. More envelopes can be obtained from the Rector. It is by no means intended that these special gifts should interfere with the Free-will offerings for the maintenance of the Church Services, which of course need all the usual support which is given.

On the two Sundays following Easter the services will be undertaken by the Rev. C. Rogerson, in the absence of the Rector.

PARISH COUNCIL.—A Parish Meeting was held on Monday, March 16th, for the Triennial Election of Parish Councillors. The following are the names of those elected:—Mr. A. W. Mason, Rev. A. D. Hill, Mr. J. Wilkinson, Mr. E. E. Coville, Mr. S. Hoyles, Mr. A. H. Smith, Mr. C. Allwood (sen.), Mrs. Cartwright, Mr. A. Shipman, Mr. W. Lander, Mr. J. Cox.

During the past year the Parish Council has carried through the scheme submitted to a Parish Meeting about a year ago, by which the "Wharf" is to be let on a long lease to the Trent Navigation Company, while preserving to the inhabitants their right of access to the river. When all the new locks now in course of construction are completed,—it is hoped during this year, the Company propose to erect a good wharf with the necessary buildings, on the riverside opposite to the Gunthorpe lock. It should be an advantage to this parish in the future to regain some of the traffic on the river in which many Bridgford men in past days were engaged, and to be able to make use of the fine water-way which flows past its border.

EASTER VESTRY.—The Vestry Meeting for the appointment of Church Wardens will take place as usual on Tuesday in Easter week, April 14th, at 7 p.m. in the School. All ratepayers are entitled to attend and vote, according to ancient custom, as well as all those on the Church Electoral roll.

GIRL GUIDES.—The Jumble Sale which was held on March 14th in the Women's Institute Hut, in aid of the Girl Guide Company funds, realized £12. The officers and girl guides wish to thank all those who by their help or contributions, made the sale a huge success.

SCHOOL CONCERT. The Managers would like to offer their congratulations to the teachers and scholars on the excellent concert which was given on Tuesday, February 24th, in the Temperance Hall and to thank parents and friends of the school for their kind help and support. The school funds were benefited by the sum of £15 7s. 6d., needed to defray the cost of a piano and the asphaltting of the school yard. We feel sure that parents were gratified to see the efficiency and agility of their children in the various performances, and how nice they all looked.

As the School at Kneeton has now been closed by the Board of Education, the County Education Committee intend to convey the Kneeton children daily to our School after Easter. Accommodation at dinner time for children from Kneeton and Newton will be provided by Mr. George Higgs.

We have lost from among us Police-Constable Anderson, who has kept us in good order for five years past, and has now been transferred to Mansfield, where we hope he and his family will find a comfortable home. His place here is taken by P.C. Fossey.

CHURCH SERVICES FOR APRIL.

April 5th.	Palm Sunday. Holy Communion mid-day.
" 7th.	Confirmation 3 p.m.
" 9th.	Thursday in Holy Week. Holy Communion 10.30.
" 10th.	GOOD FRIDAY. Services 11 and 7.
" 12th.	EASTER DAY. Holy Communion 7, 8 (choral), Mid-day.
" 19th.	1st Sunday after Easter. Holy Communion at mid-day.
" 26th.	2nd Sunday after Easter. Holy Communion at 8.
May 1st.	S. Philip and S. James, App. MM. Holy Communion 8.
" 3rd.	3rd Sunday after Easter. Mattins 10. Holy Communion 10.45 (choral).

EXTRACTS FROM PARISH REGISTERS.

BAPTISMS.

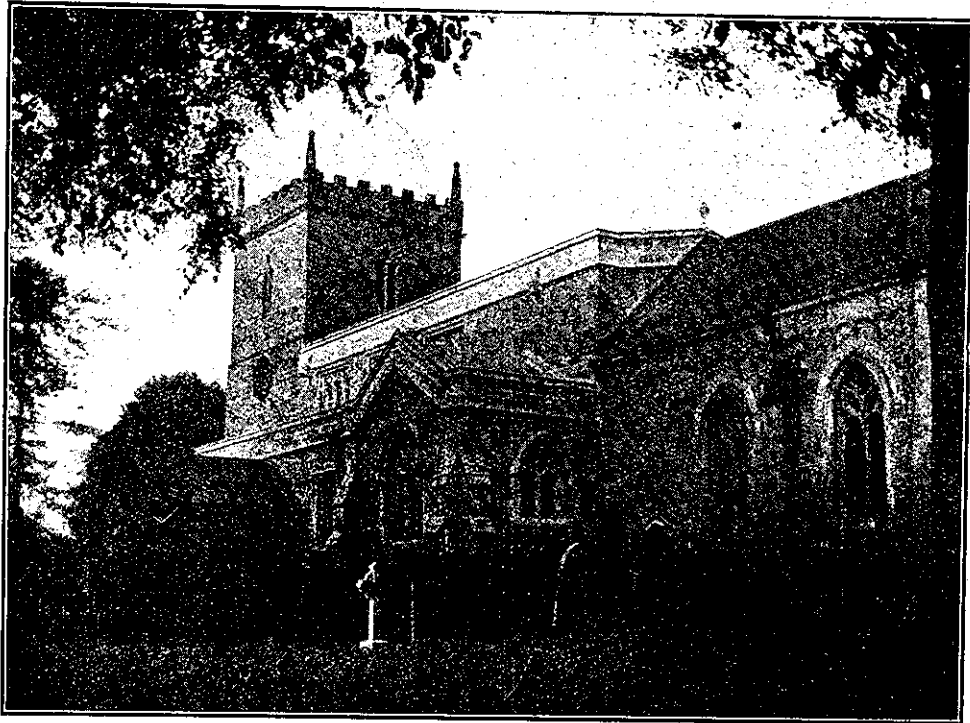
March 20th. Gordon, son of Charles and Lily Hobbs.
 " " James George, son of John and Ethel Crossland.

TIMES OF SUNSET at East Bridgford for April. Lighting up one hour later. Number plate lights half an hour later:—

April 1st, 6.35; 9th, 6.49 (Full Moon); 15th, 7.1; 23rd, 8.15 (New Moon).

Summer time begins on Sunday, April 19th.

EAST BRIDGFORD MAGAZINE.



St. Peter's Church, East Bridgford.

Services.

HOLY COMMUNION:—

On the first Sunday in the Month : Matins at 10 ; Choral Eucharist 10.45.
After Morning Prayer on the Third Sunday in the Month.
On all other SUNDAYS and HOLY DAYS at 8 a.m.

MORNING AND EVENING PRAYER.—

Sundays at 10.45, (10, on first Sunday in Month) and 6.30 p.m.

HOLY BAPTISM:—

First Sunday in month at 3, or at other Services on due notice.

CHURCHING OF WOMEN:—

Wednesday and Friday at 10, or before any Service on due notice.

SUNDAY SCHOOL AND CATECHISM:—

At 10 a.m. and 2.30 p.m. in the National School. Catechism in Church
at 2.30.

A. D. HILL, Rector.

CONFIRMATION. The Bishop of our Diocese of Southwell visited East Bridgford on Tuesday, April 7th, and administered the solemn rite of Confirmation in the Parish Church. There were 71 candidates, 19 of whom came from our own, and the others from neighbouring parishes, filling the central seat blocks; and the rest of the Church was quite filled with an interested congregation. The Bishop in his address laid stress on the duty of every member to take his part in the work and effort of the Church, and invited the attentive congregation to help him in the evangelistic work now needed in the Diocese, to which £3 8s. 9d. was contributed in response.

The Rector acknowledges £4 sent to him as Lenten savings, which has been forwarded to Canon Adams, the Secretary of the Division of the Diocese Fund.

Beautiful spring weather accompanied Good Friday and Easter Day, which were well observed as Holy days. But the rain on the Bank Holiday of Monday brought disappointment to many who hoped to enjoy a continuance of the bright sunshine.

THE EASTER VESTRY was held on Tuesday in Easter Week, April 14th. Mr. R. K. Beaumont and Mr. F. S. Molyneux were reappointed churchwardens for the ensuing year. The subject of some improvements in the churchyard, which is in the hands of a Sub-Committee of the Church Council, was briefly discussed.

The Parish Council has appointed Messrs. C. Allwood, A. H. Smith and E. E. Coville as Overseers of the parish.

On Sunday, May 17th, "Diocesan Sunday," the annual appeal of the Southwell Diocesan Board of Finance will be made, and collections given in every parish throughout the Diocese. Acting on resolutions passed by the Diocesan Conference, the Board of Finance has set itself this year to raise the sum of £11,878, about two-thirds of which is for Diocesan needs, and the remaining third for Central Church work. This parish is asked for a contribution of £12, as a proportionate share.

Some of the Church's work is best accomplished by central organization and some by Diocesan agencies, and to prevent overlapping, estimates are made beforehand of the needs of each. The provision of clergy, the building of churches, the religious education of the young, and pensions for clergy, widows and orphans, are some of the principal objects essential to the well being of the church, and it is the bounden duty of every parish to take its part in this work of the Church.

On WHIT-SUNDAY, May 31st, the Holy Communion will be celebrated at 8 and at midday. On this day the collections will be for the school funds. The church has sustained the principle that religion is an integral part of a true education, and done so much for the education of children in the past, that the Church Council has thought it right for all to have the opportunity given to them of making some contribution towards the expenses that still fall upon the managers.

THE FLOWER SHOW. The committee of the East Bridgford Horticultural Society have now issued their schedule of prizes to be offered at the show in Feast Week, on Tuesday, June 30th. The list, besides the usual classes for flowers and vegetables, includes prizes for best cultivated allotment, for poultry and rabbits open to the neighbouring villages, and some to all England; the Women's Institute section; and as a new venture, special classes for trays of vegetables for Car Colston, Kneeton, Newton and Shelford, together with championship prizes offered by Mr. Beaumont and Mr. Swain, for the best trays in classes B and C shown by all five villages.

THE MOTHERS' UNION is arranging a sale of work on Friday, May 22nd, at Mrs. Beaumont's house and with a public tea in The Hut. The proceeds will be given to the "Mary Summer Memorial House," the new headquarters of the Society in London.

HOSPITALS. As the result of the "Cabaret Show," held in the Temperance Hall on Saturday, March 21st, £6 10s. has been sent to the Nottingham Hospital for Women.

During the "Egg Week," 592 eggs were sent to the Nottingham General Hospital from East Bridgford.

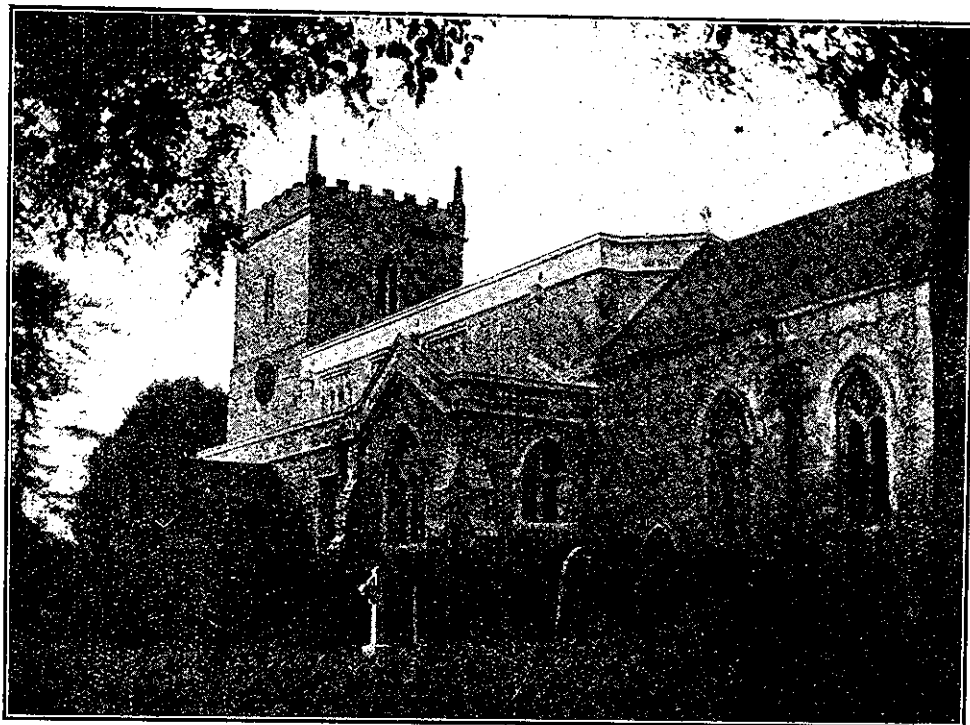
CHURCH SERVICES FOR MAY.

May 3rd.	3rd Sunday after Easter.	Mattins 10.	Holy Communion 10.45
" 10th.	4th Sunday after Easter.		Holy Communion at 8.
" 17th.	5th Sunday after Easter.		Holy Communion at mid-day. Collection for Diocesan Fund
" 21st.	ASCENSION DAY		Holy Communion at 10.30
" 24th.	Sunday after Ascension.		Holy Communion 8.
" 31st.	Whit Sunday.		Holy Communion 8 and Mid-day. Collections for School.
June 7th.	Trinity Sunday.	Mattins 10.	Holy Communion (choral). 10.45.

TIMES OF SUNSET at East Bridgford for May. Lighting up one hour later. Number plate lights half an hour later:—

May 8th, 8.41 (Full Moon); 15th, 8.52; 22nd, 9.3 (New Moon); 30th, 9.15.

EAST BRIDGFORD MAGAZINE.



St. Peter's Church, East Bridgford.

Services.

HOLY COMMUNION:—

On the first Sunday in the Month : Matins at 10 ; Choral Eucharist 10.45.
After Morning Prayer on the Third Sunday in the Month.
On all other SUNDAYS and HOLY DAYS at 8 a.m.

MORNING AND EVENING PRAYER —

Sundays at 10.45, (10, on first Sunday in Month) and 6.30 p.m.

HOLY BAPTISM:—

First Sunday in month at 3, or at other Services on due notice.

CHURCHING OF WOMEN:—

Wednesday and Friday at 10, or before any Service on due notice.

SUNDAY SCHOOL AND CATECHISM:—

At 10 a.m. and 2.30 p.m. in the National School. Catechism in Church
at 2.30.

A. D. HILL, Rector.

This year 1925, we reach the 1600th anniversary of a great event in the history of the Church, the summoning of the first great General Council of the Church, at Nicæa on May 20th, 325, A.D.

In the previous year the Emperor Constantine the Great, who was probably born at York, became sole ruler of the Great Empire of Rome, which then extended from Britain to the Caspian Sea. Constantine, though not yet a Christian, recognized the resolute, pure and honest character of the Christians in his army. He discontinued the persecutions of his predecessors and gave them full tolerance, even adopting the Cross and Sacred Monogram as his standard in battle. He saw the value of the Christian fellowship in helping to maintain his wide Empire in unity and peace.

At his suggestion a great council of the Church was held, attended by 318 bishops from every part of Christendom, at the royal city of Nicæa in Bithynia, to settle a serious doctrinal dispute that had arisen from the false teaching of Arius, who declared that our Lord was a created being, and not God in the same sense that the Father is God. Led by Athanasius of Alexandria, the Council finally agreed upon that important declaration of the Christian faith which is accepted by the whole Church, and everywhere recited at the Holy Communion, known as the NICENE CREED.

The words "of one substance with the Father" (that is, perfectly identical in nature), sum up the important truth then defined. The creed then ended with the words "I believe in the Holy Ghost," the final sentences being added at another general Council held a few years later.

A special commemoration of this 16th Centenary will be arranged in the Cathedral at Southwell at 10.30, on Wednesday, July 1st, 1925.

ON FEAST SUNDAY, June 28th, according to the custom of former years, a Memorial Service will be held at 3 o'clock, at the Cross in the Churchyard to those who fell in the great war.

The quarterly Meeting of the Church Council will be held on Tuesday, July 7th, at 8 p.m. Will the contributors to the Free Will Offerings Fund please remember to send in their envelopes by the end of June.

THE SCHOOL.—A Meeting of contributors to the School will be held on Monday, June 8th, in the Schoolroom at 8 p.m. to elect two Managers for the period of three years ensuing.

NOTTS FEDERATION OF WOMEN'S INSTITUTES.—An Exhibition and Sale took place on May 13th and 14th in the Territorial Drill Hall, Nottingham. A list is given below of the prizes gained by the East Bridgford and District Women's Institute; the fitted up Doll's house attracting special attention as a triumph of ingenuity and skilful manipulation. It is to be exhibited, with other articles from the exhibition, in the W.I. Section of the Flower Show on June 30th.

List of Prize winners :—

Programme for 1924—1st prize, East Bridgford W.I.
Teamwork. Doll's House—1st prize, East Bridgford W.I.
Bottled Fruits, etc. Orange Marmalade—1st prize, Miss Stubbs.
 Soft Fruit—2nd prize, Mrs Coville.
 Stone Fruit—2nd prize, Mrs Coville.
Farm Produce. Duck Eggs—1st prize, Miss Standish.
 Home-cured Bacon—2nd prize, Mrs Kemp.
Cane Work. Tray—2nd prize, Mrs Martin Knight.
Toys. Doll, home-made—1st prize, Mrs Pick
 Any Toy—2nd prize, Miss A. Millington.
Housewifery. Rug—2nd prize, Mrs Kirkham.
 Humpty—1st prize, Mrs Coville.
Skins. Cured Skin—2nd prize, Mrs Morris.
 Made-up article—1st prize, Miss Fox.
 2nd prize, Mrs Newcombe.
Knitting. Pair Men's Socks—2nd prize, Miss A. Millington.
Millinery. Hat made over shape—2nd prize, Mrs Pick.
Messrs. Weldon's prize for darned jumper—Miss Fox.

On June 9th, a Garden Meeting of the W.I. will be held in Mrs. Dexter's garden (or if wet in the Hut) at which a lecture on "British Birds" will be given; also Folk-dancing, games, etc.

FLOWER SHOW.—The 59th annual show of the East Bridgford Horticultural Society will take place in Mr. Pickford's field on Feast Tuesday, June 30th. Admission 3 to 5 p.m. 1/-. 5 p.m. to close 6d. The Netherfield Railway-men's Brass Band is engaged. Various side-shows and competitions will be provided.

Intending exhibitors are reminded that entries for the Poultry and Rabbit classes must be made to Mr. J. Kemp on or before June 16th. Entries for the Allotments prizes, and the special classes for trays of vegetables (Classes B. and C.) must be made to Mr. A. H. Smith on or before June 14th.

CRICKET CLUB.—The following matches have been played :—

May 2nd County Asylum 73; East Bridgford 70 (Lost).
 „ 8th Friary C.C. 23; East Bridgford 118 for 9 wickets (Won).
 „ 16th Old Mundellans 42; East Bridgford 61. Won.

Other fixtures are as follows :—

May 23rd	British Legion (Ivyleaf C.C.)	June 27th	Thos. Adams, Ltd.
June 6th	Newark Amateurs [(away)]	„ 29th	Whatton
„ 8th	Whatton (away)	„ 30th	The President's XI.
„ 13th	Ministry of Pensions	July 4th	Newark Amateurs (away)
„ 20th	Friary C.C.		

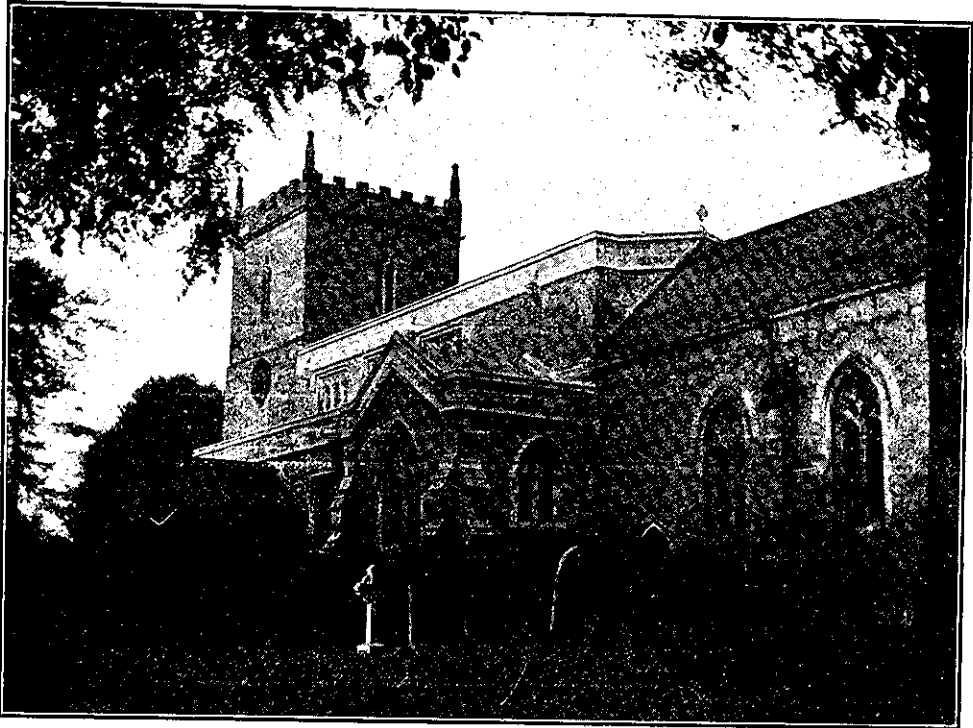
CHURCH SERVICES FOR JUNE.

June 7th. Trinity Sunday. Mattins 10. Holy Communion (choral) 10.45.
 „ 11th. S. Barnabas, A. and M. Holy Communion 8.
 „ 14th. 1st Sunday after Trinity. Holy Communion at 8.
 „ 21st. 2nd Sunday after Trinity. Holy Communion at mid-day.
 „ 24th. S. John Baptist. Holy Communion at 8.
 „ 28th. 3rd Sunday after Trinity. Feast Sunday. Holy Communion 8. Memorial Service 3.
 „ 29th. S. Peter, A. & M. Holy Communion 10.30.
 July 5th. 4th Sunday after Trinity. Mattins 10. Holy Communion (choral) 10.45.

TIMES OF SUNSET at East Bridgford for June. Lighting up one hour later. Number plate lights half an hour later :—

June 6th, 9.22 (Full Moon); 13th, 9.28; 21st, 9.32 (New Moon); 29th, 9.32.

EAST BRIDGFORD MAGAZINE.



St. Peter's Church, East Bridgford.

Services.

HOLY COMMUNION:—

On the first Sunday in the Month : Matins at 10 ; Choral Eucharist 10.45.
After Morning Prayer on the Third Sunday in the Month.
On all other SUNDAYS and HOLY DAYS at 8 a.m.

MORNING AND EVENING PRAYER:—

Sundays at 10.45, (10, on first Sunday in Month) and 6.30 p.m.

HOLY BAPTISM:—

First Sunday in month at 3, or at other Services on due notice.

CHURCHING OF WOMEN:—

Wednesday and Friday at 10, or before any Service on due notice.

SUNDAY SCHOOL AND CATECHISM:—

At 10 a.m. and 2.30 p.m. in the National School. Catechism in Church
at 2.30.

A. D. HILL, Rector.

By the time this month's Magazine is in the hands of our readers the 59th annual Flower Show will have taken place. We hope to be favoured with fine weather, and feel sure that the carefully revised programme and new attractions will in that case be rewarded with a good attendance of visitors. The Prize money will be paid in the Schoolroom on Monday, July 6th, when the Prize tickets must be produced.

During the past month the Church representatives, both Clergy and Laity have been busy. The Church Assembly has been holding its session in London, with its three Houses of Bishops, Clergy and Laity. The Southwell Diocesan Conference met in Nottingham on June 23rd to receive Reports of the past year's work and to consider the proposed Bills dealing with Tithe and Church Patronage. In the evening, Colonel Stanley spoke on the important and interesting subject of The Peopling of the Empire. The Clergy and Lay representatives of the 19 parishes of our own Rural Deanery met at their annual Conference at Bingham on June 9th. Our own parochial Church Council will hold its quarterly Meeting on July 7th. Each of these bodies appoints its representatives to the next larger body, so that from the Parish to the General Assembly, the general voice of the Church of England can make itself heard in matters that affect its well-being.

MOTHERS' UNION. On May 22nd, a public Tea followed by a Sale of Work and Entertainment, was arranged by the East Bridgford members in the Women's Institute Hut. The proceeds, in aid of the "Mary Sumner" House fund, amounted to £7 15s. 6d.

On Monday, June 15th, the annual Summer Festival of the Branches of the Mothers' Union in the Rural Deanery of Bingham was held at Belvoir in glorious weather. About 100 members were present, and tea was provided on the lawn at the Peacock Hotel. Before returning to their respective villages, the members attended a service at Woolsthorpe Church, where a helpful address was given by the Rector, the Rev. E. J. Goldsmith.

On Saturday, June 20th, an American Tennis Tournament was held in aid of the London Association for the Blind. Lawns were kindly lent by Mr. Swain and Mr. Moor, and tea was served at the Hall. The sum of £7 6s. 6d. was realized for the funds of the Association for the Blind.

THE SCHOOL.—The Managers of the School for three years from June 1925, have now been duly appointed as follows :—

The Rector, Mr F. S. Molyneux, Mr J. Pickford, Mr Harvey (Foundation Managers), Miss Fox, appointed by the County Council Education Committee, and Mr W. Lander, appointed by the Parish Council.

Miss K. E. Fox, who has completed her training as Pupil Teacher in our School, has been appointed to a post as supplementary Teacher in Lowdham School.

The boys of East Bridgford and Bingham Schools met for a Cricket match on Tuesday, June 23rd ; the match ending in a victory for our boys.

CRICKET CLUB.—Matches played :—

June 4th	East Bridgford	53 ;	Lowdham	19.
.. 6th	..	78 ;	Newark Amateurs	41.
.. 8th	..	93 ;	Whatton	42.
.. 13th	..	34 ;	Ministry of Pensions	19.
.. 18th	..	27 ;	Lowdham	46.
.. 20th	..	63 ;	Friary C.C.	57.

The following are the fixtures for the month :—

July 4th	Newark Amateurs (away)	July 25th	Thomas Adams Ltd.
.. 11th	Conservative Association	Aug. 1st	Kensington C.C.
.. 18th	Reed Mills, Mansfield		

CHURCH SERVICES FOR JULY.

July 5th.	4th Sunday after Trinity.	Mattins 10.	Holy Communion (choral) 10.45.
.. 12th.	5th Sunday after Trinity.	Holy Communion at 8.	
.. 19th.	6th Sunday after Trinity.	Holy Communion at mid-day.	
.. 25th.	S. James, A. & M.		
.. 26th.	7th Sunday after Trinity.	Holy Communion at 8.	
Aug. 2nd.	8th Sunday after Trinity.	Mattins 10.	Holy Communion (choral) 10.45.

TIMES OF SUNSET at East Bridgford for July. Lighting up one hour later
Number plate lights half an hour later :—

July 6th, 9.29 (Full Moon) ; 12th, 9.24 ; 20th, 9.15 (New Moon) ; 28th, 9.4.

EXTRACTS FROM PARISH REGISTERS.

BAPTISM.

June 21st. Rose Mary, daughter of Edward and Agnes Beatrice Ellis.

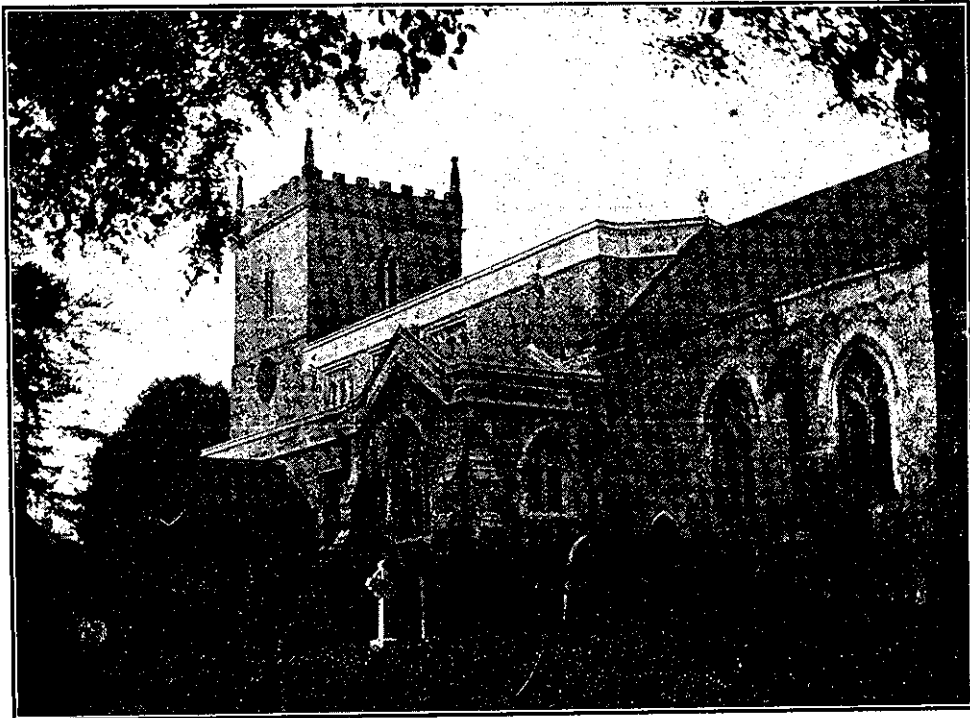
MARRIAGE.

June 1st. George William Willis and Alice Mary Pickford.

BURIAL.

June 16th. James George Crossland, aged 4 months.

EAST BRIDGFORD MAGAZINE.



St. Peter's Church, East Bridgford.

Services.

HOLY COMMUNION :—

On the first Sunday in the Month : Matins at 10 ; Choral Eucharist 10.45.
After Morning Prayer on the Third Sunday in the Month.
On all other SUNDAYS and HOLY DAYS at 8 a.m.

MORNING AND EVENING PRAYER :—

Sundays at 10.45, (10, on first Sunday in Month) and 6.30 p.m.

HOLY BAPTISM :—

First Sunday in month at 3, or at other Services on due notice.

CHURCHING OF WOMEN :—

Wednesday and Friday at 10, or before any Service on due notice.

SUNDAY SCHOOL AND CATECHISM :—

At 10 a.m. and 2.30 p.m. in the National School. Catechism in Church
at 2.30.

A. D. HILL, Rector.

FEAST WEEK.—On Sunday, June 28th, being Feast Sunday, we held our annual service of Remembrance at the Memorial Cross, at 3 p.m. The British Legion undertook the arrangements, and the fine weather enabled a large congregation to join in the service. The Rector gave an address, quoting Rupert Brooke's poem, "The Soldier," with its suggestion of "a pulse in the eternal mind," like a wonderful wireless from the past, of which our lives should be the recording instrument, and show it in more usefulness, more unity, more sincerity in our actions.

The band of 42nd Nottingham Troop Boy Scouts accompanied the hymns, and after the Last Post was sounded, played a suitable selection of music.

At Evensong, the Choir sang the Anthem "Send out thy light," by Gounod.

We regret to record a sad accident by which John Smith met his death in a collision at Budby cross roads, when returning to Worksop on his motor cycle, after attending the garden party at Mr. Swain's on July 11th.

THE SCHOOL closes for holidays on Friday, July 31st and will re-open on Monday, August 31st.

The return cricket match between this School and Bingham took place at Bingham on July 6th and again resulted in a victory for our boys.

The Rector will be away from home after August 6th, and the Services will be taken by the Rev. Alfred T. Ellis, Vicar of All Saints, Walworth, S.E. The Celebration of Holy Communion will be at 8 a.m. each Sunday with a Choral Celebration on Sept. 6th.

The 59th annual Flower Show was successfully held on Tuesday, June 30th, in Mr. Pickford's field in Toll-bar Lane. The following is the list of Prize winners:—

CLASS A.	CLASS B.
Geranium (bloom)—Mr R. H. Swain (gardener, F. O. Green), 2 Rev A. D. Hill (gardener, J. Mussell)	Geranium (bloom)—1 W. C. Millington
Geranium (foliage)—1 Mr W. E. Claye (gardener, J. Upton), 2 Hill	" (foliage)—1 Millington, 2 Coville
Pelargonium—1 Hill, 2 Swain	Pelargonium—1 Millington
Fuchsia—1 Hill, 2 Swain	Fuchsia—1 Millington
Calceolaria (shrubby)—1 Claye, 2 Swain	Calceolaria—1 Boyce, 2 Millington
(herbaceous)—1 Claye	Petunia—1 Millington
Petunia—1 Hill, 2 Swain	Window plants—1 Oliphant, 2 G. Bateman
Greenhouse plants—1 Hill, 2 Swain	Greenhouse plants—1 Millington
Bouquet—1 Swain, 2 Hill	Sweet William—1 Coville, 2 Millington
Pansies—1 Hill, 2 Claye	Bouquet—1 Pick, 2 Fletcher
Sweetpeas—1 Swain	Pansies—1 Millington, 2 Fletcher
Carrots—1 Hill, 2 Swain	Carrots—1 Millington, 2 Coville
Cauliflower—1 Claye, 2 Hill	Cauliflowers—1 Bateman, 2 Millington
Cucumber—1 Swain	Cucumbers—1 Millington
Broad Beans—1 Hill, 2 Claye	Broad Beans—1 Millington, 2 Bateman
Onions (spring)—1 Swain, 2 Claye	Onions (spring)—1 Coville, 2 Knight
(autumn)—1 Miss Fox, 2 Swain	(autumn)—1 Millington, 2 Pickford
Lettuce—1 Swain, 2 Hill	Lettuce—1 A. H. Smith, 2 Coville
Peas—1 Swain, 2 Claye	Peas—1 Millington, 2 Fletcher
Potatoes (round)—1 Swain, 2 Claye	Potatoes (round)—1 Coville, 2 Thornton
(kidney)—1 Swain, 2 Hill	(kidney)—1 Coville, 2 Thornton
Turnip—1 Swain, 2 Mrs Swain	Turnips—1 Millington, 2 Knight
Apples (last year's)—1 Claye, 2 C. W. Hall	Apples (last year's) 1 Oliphant
(new)—1 Swain, 2 Mrs Swain	(this year)—1 Shipman, 2 Savage
Gooseberries—1 Mrs Swain, 2 Swain	Gooseberries—1 Hoyles, 2 Millington
Currants (white)—1 Swain, 2 Hill	Currants (white)—1 Coville, 2 Bullers
(red)—1 Claye, 2 Hill	(red)—1 Bateman, 2 Pick
(black)—1 Swain, 2 Claye	(black)—1 Hoyles, 2 Coville
Raspberries—1 Mrs Swain, 2 Swain	Raspberries—1 Pick, 2 Thornton
Strawberries—1 Swain, 2 Claye	Strawberries—1 Coville, 2 Pick
Cherries—1 Hill	Cherries—1 Bullers
Tray of Vegetables—1 Hill	Tray of Vegetables—1 Millington, 2 Bateman
Roses—1 Claye, 2 Dr Duff	Roses—1 Coville, 2 Millington
Special Merit—1 Hill, 2 Swain	Special Merit—1 Millington

CLASS C.
Geranium (bloom)—1 J. Kirkham
(foliage)—1 Kirkham
Pelargonium—1 H. Crossland
Fuchsia—1 T. Thraves
Calceolaria—1 Thraves, 2 Kirkham
Pot Musk—2 H. Crossland
Petunia—1 Thraves, 2 Crossland
Sweet William—1 Thraves, 2 Crossland
Cut Flowers—1 Crossland
Pansies—1 Crossland
Sweet Peas—1 Crossland, 2 Cox
Carrots—1 Thraves, 2 Crossland, 3 Cox
Cauliflowers—1 W. H. Crossland
Cabbages—1 Cox, 2 Coulson
Rhubarb—1 Scarborough, 2 Thraves
Broad Beans—1 Crossland, 2 Thraves, 3 Cox
Onions (spring)—1 Crossland, 2 Cox, 3 Coulson
(autumn)—1 Kirkham, 2 Cox, 3 Coulson
Lettuce—1 Crossland, 2 Chapman, 3 Coulson
Esohalots—1 Chapman, 2 Crossland, 3 Coulson
Peas—1 Chapman, 2 G. Priestley, 3 Coulson
Potatoes (round)—1 Crossland, 2 T. Wilkinson, 3 Cox
(kidney)—1 Wilkinson, 2 Crossland,
3 J. T. Huskinson
Turnips—1 Coulson, 2 Crossland
Apples (last year's)—1 Crossland
(new)—1 Mrs Bradley, 2 Crossland, 3 Cox
Gooseberries—1 Crossland, 2 Priestley
Raspberries—1 Crossland, 2 Coulson
Strawberries—1 Wilkinson, 2 Mrs Bradley
Currants (white)—1 Coulson, 2 Crossland
(red)—1 Crossland, 2 Priestley
(black)—1 Coulson, 2 Thraves
Cherries—1 Crossland
Tray of Vegetables—1 Crossland, 2 Cox
Roses—1 Wilkinson, 2 Kirkham
Consolation prize—J. Cloxton

SPECIAL PRIZES.

Messrs Doncaster's B and C—1 W. C. Millington, 2 G. Bateman
Garden Design—1 Dr Duff, 2 O. Raynor
Premier Potatoes—1 R. H. Swain
Mr Tarr's prize C—1 T. Wilkinson
Mr Beaumont's prize for Championship Tray of Vegetables Class B—1 W. C. Millington, 2 Coville
Mr Swain's prize ditto Class C—1 H. Crossland, 2 C. Whyley
Tray of Vegetables (Car Colston) Class B—Mrs Todd
Ditto (Newton) Class C—C. Whyley
Allotments—1 G. Bateman, 2 Oliphant, 3 C. Pickford, 4 A. Knight 5 O. Raynor, 6 R. Upton (the last three given by W. Gell for Class C.)
Gold Medal Class B—W. C. Millington
" Class C—H. Crossland

CLASS D. POULTRY.
White Leghorns—1 Mrs Kemp, 2 J. Kemp, 3 F. Thornton
White Wyandottes—1 H. Hall
Rhode Island Red—1 Mrs Cartwright, H. Hall
2 J. Pickford, R. H. Swain
3 R. H. Swain
Other Variety—1 Sheldon (Shelford), 2 Hall, 3 Sheldon
Bantam Cock and Hen—1 J. A. Cloxton
Poultry Club Bronze Medal—H. Hall

CLASS E. POULTRY.

Five Classes Open. Won by Messrs Clarke, Fox, Kidd and Hearnshaw
East Bridgford Special. Open to members of the Poultry Club, Notts.
Poultry Club Utility Challenge Cup—R. Kidd, Balderton
Poultry Club County Challenge Cup—T. H. Sheldon, Shelford
Poultry Club Silver Medal—T. H. Sheldon

CLASS F. RABBITS.

Buck—1 J. North, Newton
Doe—1 J. Bullers, 2 G. Shipman

WOMEN'S INSTITUTE SECTION.

Table Decorations—1 Mrs Duff, 2 Mrs Boyce, 3 Mrs Mason
Cut Flowers—1 Miss Molyneux, 2 Miss A. Hall
Wild Flowers—1 Mrs Millington, 2 Miss A. Millington
Bowl of Roses—1 Mrs Upton, 2 Mrs Mason
Collection of Wild Flowers—1 Mrs M. Hall, 2 Miss S. Mason
Bouquet of Wild Flowers—1 N. Hothersall, 2 E. North, 3 D. Plowright, C. Smith, E. Bateman
Eggs (white)—1 Miss Green, 2 Mrs Allwood
(brown)—1 Miss M. Hall, 2 Mrs Watson
(tinted)—1 Miss Standish, 2 Mrs Sumner
(duck)—1 Miss Standish, 2 Mrs M. Millington
Butter—1 Mrs C. K. Allwood, 2 Mrs Newcombe
Fancy Butter—1 Mrs M. Millington, 2 Mrs Mason
Cheese (cream)—1 Miss A. Millington, 2 Mrs M. Millington
(soft)—1 Mrs Newcombe, 2 Mrs North
(Colwick)—1 Mrs Newcombe
Bottled Fruit and Vegetables—1 Miss Henstock, 2 Mrs Coville
Home-made Sweets—1 Mrs M. Millington, 2 Miss Abbott
White Bread—1 Mrs Pickford, 2 Mrs Muggleton
Whole-meal Bread—1 Mrs M. Millington
Fancy Bread—1 Mrs Pickford, 2 Mrs Millington
Seed Cake—1 Mrs M. Hall, 2 Mrs Pickford
Iced Cake—1 Mrs M. Millington, 2 Miss Green

TIMES OF SUNSET at East Bridgford for August. Lighting up one hour later, Number plate lights half an hour later:—

Aug. 4th, 8.52 (Full Moon); 11th, 8.38; 19th, 8.21 (New Moon); 27th, 7.4.

EXTRACTS FROM PARISH REGISTERS.

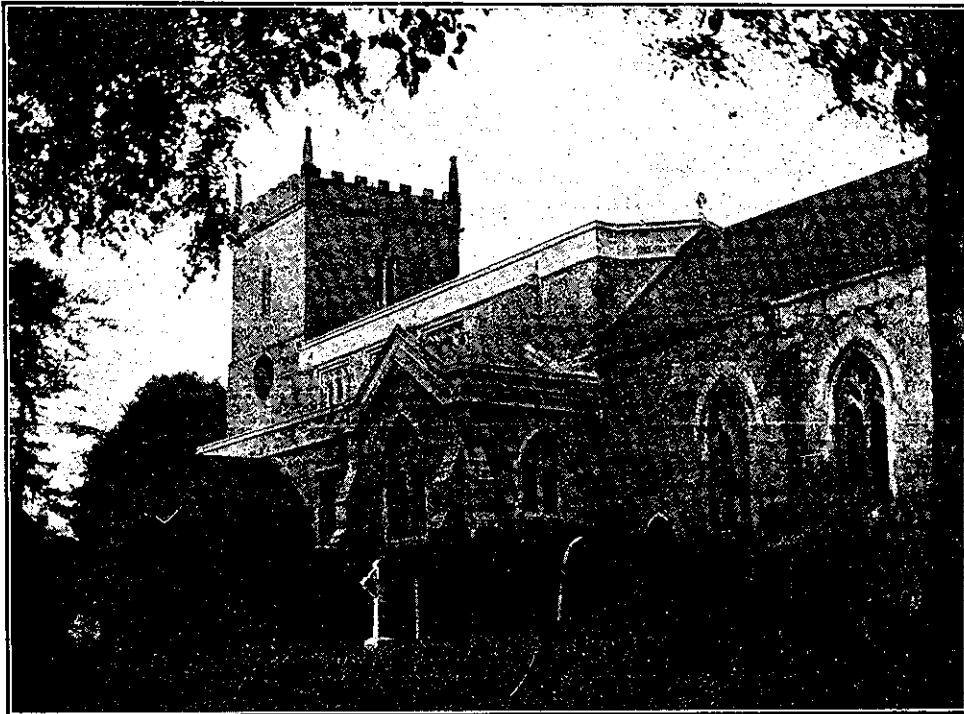
BAPTISMS.

June 28th.	Phyllis Caroline, daughter of Alfred and Emily Lavinia Knight.
July 3rd.	Joyce Honor, daughter of John Edmund Cecil and May Hill.
" 19th.	Raymond, son of Owen and Sarah Blagg.
" "	Wilfred, son of Poyntz and Doris Blagg.

BURIAL.

July 15th. John Smith, aged 22 years.

EAST BRIDGFORD MAGAZINE.



St. Peter's Church, East Bridgford.

Services.

HOLY COMMUNION:—

On the first Sunday in the Month : Matins at 10 ; Choral Eucharist 10.45.
After Morning Prayer on the Third Sunday in the Month.
On all other SUNDAYS and HOLY DAYS at 8 a.m.

MORNING AND EVENING PRAYER.—

Sundays at 10.45, (10, on first Sunday in Month) and 6.30 p.m.

HOLY BAPTISM:—

First Sunday in month at 3, or at other Services on due notice.

CHURCHING OF WOMEN:—

Wednesday and Friday at 10, or before any Service on due notice.

SUNDAY SCHOOL AND CATECHISM:—

At 10 a.m. and 2.30 p.m. in the National School. Catechism in Church
at 2.30.

A. D. HILL, Rector.

August 20th, 1925

MY DEAR PARISHIONERS,

I am writing, on my holiday, from the very remote little town of Lostwithiel in Cornwall, in the midst of very beautiful valleys and hills. It is at the head of a tidal estuary running inland for some six miles between steep wooded banks, from the fine harbour of Fowey, and it has the additional attraction for me as the home of my boyhood. We spent last Sunday at Chagford, a village in the heart of Dartmoor, with a fine granite Church, 8 bells and services very like our own. The 60 miles from thence to our present resting place were mainly over glorious moorland hills and valleys, past the old country towns of Launceston and Bodmin. The Harvest is going on busily during this fine weather, but this county is mainly for grazing in the valleys. I hope all goes on well at East Bridgford, and that we shall be ready and able to give thanks for Harvest and many other blessings, before the end of the month.

A. D. HILL.

The Rev. J. F. Tarleton preached on Sunday morning, July 26th, on behalf of the National Society for the Promotion of Religious Education.

On July 25th the Church Choir went for an excursion to Skegness. It was a most enjoyable and successful day in glorious weather, and the Choir express their thanks to those who helped to send them.

A Fête was arranged on Bank Holiday, August 3rd, by the Women's Institute and the British Legion, in the grounds of the Hall. We fear the rain which fell on that day interfered with its success, and the holiday of many people was spoilt.

WOMEN'S INSTITUTE. A lecture on "Cheese Making," by Miss Wood is announced for Sept. 8th.

A course of six Lectures, open to all, on "The History of Nottinghamshire" will be given by E. L. Guilford, M.A., on Fridays at 7 p.m. beginning Sept. 18th. Particulars of these and other lectures will be duly announced.

The following account of the effigy of a knight which lies under the arched recess in the north aisle of East Bridgford Church, is taken from a paper on Military Effigies by Rev. H. Lawrance, in the forthcoming volume of the Thoroton Society's Transactions for 1924. The description is rather technical, but will no doubt be read with interest.

The original position of the effigy was upon a square tomb standing in the middle of the north transept now pulled down. It was cruelly defaced and used for building into a wall in 1778, but still shows interesting details of the chain-mail armour worn in the 14th century. It is a very common popular error to suppose that the crossed legs denote a Crusader—it was just the fashion of the time to place them so in effigies. This knight no doubt served in war under King Edward III.

"EAST BRIDGFORD.

This effigy has been deliberately defaced and retains little of its original detail. The head has almost gone but it has rested on a double cushion. The girdle and sword-belt are plain, but the method of attachment of the latter cannot be determined. Both feet have gone: the surcoat reaches to the middle of the calf. The genouillères (knee-protectors) appear to have been somewhat globular. There are features in this effigy of considerable interest;

demi-jambarts (leg-guards) of metal or cuir-bouilli, probably the latter, are shown as worn over the mail as reinforcements to it. These additions do not often occur on effigies before 1340, but they were actually worn in battle some years earlier. Thoroton's illustration appears to represent a knight wearing the "reinforced-mail" type of equipment such as that worn, for instance, by Sir Robert de Steveton at Kildwick-in-Craven. This is one of the few effigies which show the knight wearing ailettes. On brasses these curious appendages, the purpose of which has not been determined, are depicted behind the shoulders. Here, as also at Ingleby Arncliffe, Yorks., and Maltby, Lincs., they take the form of flat plates at the sides of the shoulders, and would probably be ornamented (as at Ingleby Arncliffe) with the knight's arms. The size, 12in. by 6in., is almost identical with those at Maltby.

The knight's shield in Thoroton's drawing is adorned with the arms of Caltoft, a fact which leaves little doubt as to the correct identification. There is however, no indication of the charge having been carved on the shield. In all probability the knight represented is Sir John Caltoft, whose wife Agnes, inherited one moiety of the manor of East Bridgford in 1317. But it may have been set up when the Church was enlarged (1320-1340)."

EXTRACTS FROM PARISH REGISTERS.

BAPTISM.

Aug. 16th. Geoffrey, son of Allan and Harriet Maria Lodge.

TIMES OF SUNSET at East Bridgford for September. Lighting up one hour later, Number plate lights half an hour later:—

Sept 2nd, 7.50 (Full Moon); 10th, 7.31; 18th, 7.12 (New Moon); 25th, 6.55.

Summer time ends, Sunday, October 4th.

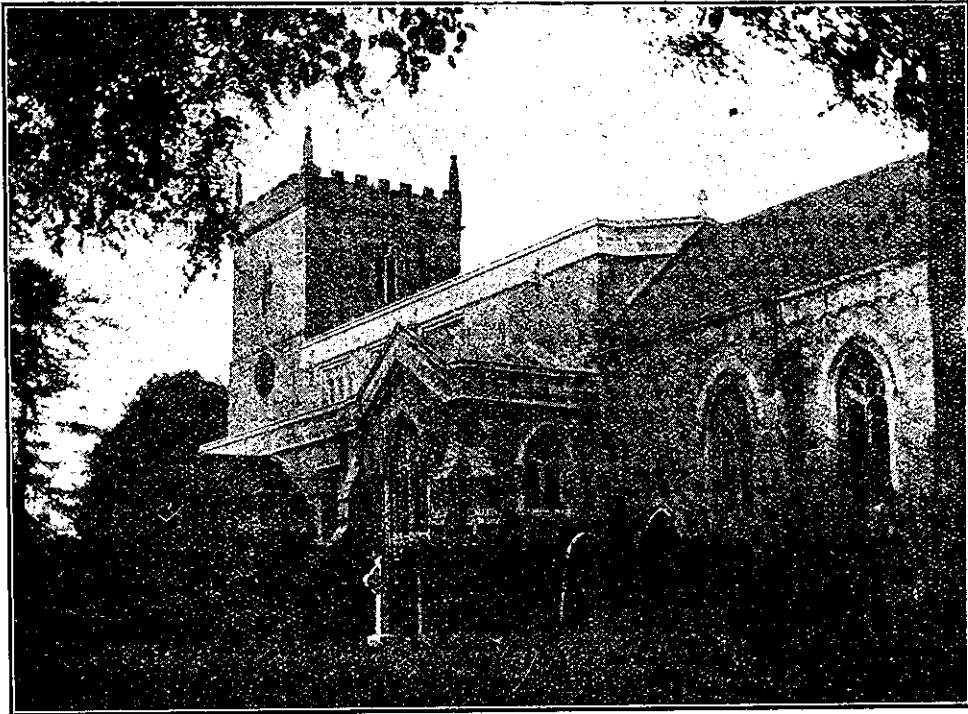
RAILWAY TIME TABLE to and from Nottingham for September:—

Leave Bingham.	Leave Victoria G.N.R.	Leave Lowdham.	Leave Nottingham M.R.
7.24	5.25	7.4	7.23
8.15	6.20	7.47	8.22
9.0	7.15	8.25	9.38
9.30	9.40	9.52	11.25
12.5	11.43	11.4	12.55
1.58	1.25 (Sat)	1.49	1.28 (Th. & Sat)
2.30 (Sat)	1.50	1.57	1.40
3.14	2.24	3.9	2.25
3.50	2.55	4.36	3.5 (Sat)
4.45	5.0	6.15	4.48
6.15	5.30	7.52	5.20
6.55 (exc. Sat)	6.14	8.20	6.12
7.5 (Sat)	7.40	9.52 (Th. & Sat)	6.30
8.1	9.0 (Sat.)		7.25
8.40	10.25 (exc. Wed. & Sat.)		8.50 (Sat)
9.20 (exc. Sat)	11.0 (Wed. & Sat.)		9.0
9.50 (Sat)			10.45

SUNDAYS.

9.26	10.25	1.8	10.25
2.21	12.15	5.58	2.25
3.36	2.25	8.12	8.30
8.38	0.15		

EAST BRIDGFORD MAGAZINE.



St. Peter's Church, East Bridgford.

Services.

HOLY COMMUNION:—

On the first Sunday in the Month : Matins at 10 ; Choral Eucharist 10.45.
After Morning Prayer on the Third Sunday in the Month.
On all other SUNDAYS and HOLY DAYS at 8 a.m.

MORNING AND EVENING PRAYER.—

Sundays at 10.45, (10, on first Sunday in Month) and 6.30 p.m.

HOLY BAPTISM:—

First Sunday in month at 3, or at other Services on due notice.

CHURCHING OF WOMEN:—

Wednesday and Friday at 10, or before any Service on due notice.

SUNDAY SCHOOL AND CATECHISM:—

At 10 a.m. and 2.30 p.m. in the National School. Catechism in Church
at 2.30.

A. D. HILL, Rector.

The Rev. A. T. Ellis writes from All Saints' Vicarage, Walworth, S.E.:—"Our stay at East Bridgford has been one of the pleasantest holidays that we have ever spent. It is always a delightful change to get away from the bricks and mortar and busy streets of a great town parish to the spaciousness and freshness and cleanness of the country. It brings refreshment to body and mind and soul. But few places have proved so restful and so satisfying to us tired townspeople as East Bridgford, beautiful in itself, in its situation, and in its surroundings. Our great regret is that, from various causes, we had to leave so much of the neighbourhood still unvisited. As we heard and read the stories of places and churches we seemed to see history lived over again before us. And then the joy of worshipping in the grand old Church which, for many centuries, generations of the people of the place have found their Father's House and their home. And, lastly, we must express our grateful thanks to all whom we have met, in Rectory, in Church, and in parish, for much help and for many acts of kindness which we shall not soon forget."

The Harvest, this year, has been gathered in quickly, and without such anxious moments as were felt during last year's rainy season.

It has been arranged to hold our Harvest Thanksgiving Services in Church on Thursday, October 8th, at 7 p.m., and Sunday, Oct. 11th.

We ask for flowers and fruit suitable for the decoration of the Church to be sent in by Wednesday evening, or at the latest early on Thursday morning. But in addition to this we desire to respond to the appeal of the General Hospital for gifts of all kinds of garden produce.

The Rector will gladly undertake to receive and send off to the Hospital all contributions of potatoes, roots, green vegetables, fruit—especially apples, if they are sent to the Rectory at anytime *during the week Oct 8th to 15th.*

There can be no better way for country folk to express their thankfulness for God's blessing of Harvest-time than by sharing their garden produce with the sick.

The General Hospital needs each year 40 tons of potatoes, and all kinds of vegetables and fruit are most acceptable and useful. It has to feed 500 every day. During 1924 there were twelve patients from East Bridgford at a cost calculated upon the average expenditure of £27 10s. So let us try to make some return for these benefits, in a practical way in which almost everyone can unite.

Harvest Thanksgiving Services have been held by the Primitive Methodists on Sept. 20th, and Wesleyans on Oct. 4th.

WOMEN'S INSTITUTE.—Mr Guilford, having been appointed Broadcasting Manager for Nottingham, has found it impossible to give his promised course of lectures. In its place the Institute in conjunction with the Notts. Rural Community Council has made arrangements for a course of lectures on "The Social and Economic life of old England," by W. McD. Wigfield, B.A. These are now being given on Friday evenings at 7 p.m. in the W.I. Hut. The first was on Sept. 18th, and they will be continued on Oct. 2nd, 9th, 16th and 23rd.

At the monthly meeting of the Institute on Tuesday, Oct. 13th, a lecture will be given by Miss Windley, on Canada.

ALLOTMENTS ASSOCIATION.—The Annual General Meeting will take place at 7 p.m., on Monday, Oct. 17th, in the School. It is particularly requested that members should endeavour to be present, in view of important business that must be considered.

Half-yearly rents are due, and subscriptions for the ensuing year should be paid.

THE BISHOP OF SOUTHWELL'S ILLNESS.—The prayers of the congregation have been offered on behalf of our beloved Bishop during the last few weeks, that he may be restored to health and vigour. He has returned to Southwell from a Nursing home in London, but is still very seriously ill.

Mr. Reuben Morris wishes to express his thanks for the sympathy and kindness of so many friends in his recent bereavement.

CHURCH SERVICES FOR OCTOBER.

Oct 4th.	17th Sunday after Trinity.	Mattins 10.	Holy Communion (choral) 10.45.
" 8th.	Thursday.	Harvest Thanksgiving 7 p.m.	
" 11th.	18th Sunday after Trinity.	Harvest Services.	Holy Communion at 8.
" 18th.	19th Sunday after Trinity.	St. Luke, E.	Holy Communion 8 and mid-day.
" 23th.	20th Sunday after Trinity.		Holy Communion at 8.
" 28th.	Wednesday.	SS. Simon and Jude, App. and MM.	Holy Communion at 10.
Nov. 1st.	All Saints' Day.	21st Sunday after Trinity.	Mattins 10. Holy Communion (choral) 10.45.

EXTRACTS FROM PARISH REGISTERS.

BAPTISM.

Sept. 6th. Kenneth Frederick, son of Frederick and Elizabeth Marshall.

MARRIAGES.

Sept. 12th. Alan Huskinson and Minnie Taylor.

" 19th. At St. Saviour's, Nottingham, Samuel Barrowcliff and Edith Ingall.

BURIALS.

Aug. 31st. Annie Smith, aged 51 years.

Sept. 1st. Edith Annie Morris, aged 45 years.

TIMES OF SUNSET at East Bridgford for October. Lighting up one hour later, Number plate lights half an hour later:—

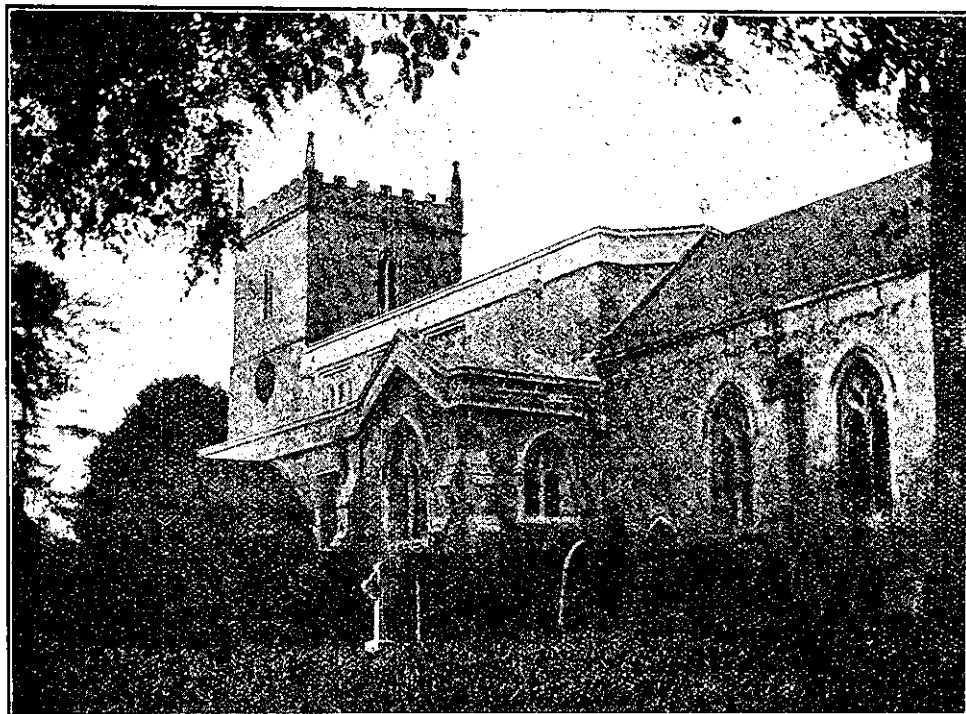
Oct 2nd, 6.38 (Full Moon); 9th, 5.21; 17th, 5.4 (New Moon); 24th, 4.48; 31st, 4.34 (New Moon).

Summer time ends at 2 a.m., Sunday, October 4th.

RAILWAY TIME TABLE to and from Nottingham for October:—

Leave Bingham.	Leave Victoria G.N.R.	Leave Lowdham.	Leave Nottingham M.R.
7.24	5.25	7.4	7.23
8.15	6.20	7.47	8.22
9.0	7.15	8.25	9.15
9.30	9.40	9.52	11.25
12.5	11.43	11.25	12.55
1.58	1.25 (Sat)	1.49	1.28 (Th. & Sat)
2.30 (Sat)	1.50	1.57	1.40
3.14	2.24	3.9	2.25
3.50	2.55	4.36	4.48
4.45	5.0	6.15	5.20
6.15	5.30	7.52	6.12
6.55 (exc. Sat)	6.14	8.20	6.30
7.5 (Sat)	7.40	9.52 (Th. & Sat)	7.25
8.1	9.0 [Sat.]		8.50 (Sat)
8.40	10.25 (exc. Wed. &		9.15
9.30 (exc. Sat)	11.0 (Wed. & Sat.)		10.45
9.50 (Sat)			
SUNDAYS.			
9.26	10.25	1.8	10.25
2.31	12.15	5.58	2.25
3.30	2.25	8.12	8.30
8.38	0.15		

EAST BRIDGFORD MAGAZINE.



St. Peter's Church, East Bridgford.

Services.

HOLY COMMUNION :—

On the first Sunday in the Month : Matins at 10 ; Choral Eucharist 10.45.
After Morning Prayer on the Third Sunday in the Month.
On all other SUNDAYS and HOLY DAYS at 8 a.m.

MORNING AND EVENING PRAYER :—

Sundays at 10.45, (10, on first Sunday in Month) and 6.30 p.m.

HOLY BAPTISM :—

First Sunday in month at 3, or at other Services on due notice.

CHURCHING OF WOMEN :—

Wednesday and Friday at 10, or before any Service on due notice.

SUNDAY SCHOOL AND CATECHISM :—

At 10 a.m. and 2.30 p.m. in the National School. Catechism in Church
at 2.30.

A. D. HILL, Rector.

OUR HARVEST THANKSGIVING service was held on Thursday evening, October 8th, at 7 p.m. the preacher being the Rev. F. H. Burnside, Rector of Hawton. The thanksgiving was continued on the following Sunday, and all the services were well attended, particularly on Sunday evening. Collections, which were given to the Sunday School Fund amounted to £6 10s. 8d. and during the week the Rector was able to send off four bags and two hampers of fruit and vegetables by Mr. Bullers, for the use of the General Hospital, which have been gratefully acknowledged by the Secretary.

GUNTHORPE LOCK.—On Tuesday, September 29th, being the fourth anniversary of the commencement of the Trent Navigation scheme, the third of the four locks to be constructed between Nottingham and Newark was officially opened at Gunthorpe. The ceremony was performed by Mr. H. B. Betterton, C.B.E., M.P. for the Rushcliffe Division and Parliamentary Secretary to the Ministry of Labour, who cut a ribbon stretched across as he entered the lock on board Colonel Raynor's launch *Mallard*, and accompanied by other launches and the steamer *Sunbeam* conveying the Trent Navigation Company and their guests, passed through the new lock. Mr. Atkey, as Chairman, introduced Mr. Betterton, who declared the lock to be open in an excellent speech. He referred first to the great relief to unemployment which the scheme had afforded, and then to the advantage of lowering the cost of transport, and of connecting the City and County of Nottingham with the progressive port of Hull, the third largest in this country; and he prophesied that in ten years' time the river would be crowded with merchandise and pleasure boats.

The locks at Holme and Stoke Bardolph were completed in 1923 and 1924, and the fourth at Hazleford will be finished next year. The work at Gunthorpe has presented some difficult and interesting engineering problems, but a very fine lock is the result. There is a weir across the stream about 130 feet in length with rollers for the passage of small boats at one end, and a fish ladder at the other; and a lock-keeper's house has been built. When the ground has been cleared, and the scheme of planting carried out, the stretch of river below the steep wooded bank of the Bridgford Hills will still be a very beautiful prospect.

WOMEN'S INSTITUTE.—At the monthly Meeting on Tuesday, Nov. 10th, a lecture will be given on "The care of the feet," and nominations made for the 1926 Committee.

ON SUNDAY, November 15th, we shall have before us the needs of the Central Board of Church Finance. This undertakes work of the Church which dioceses and parishes cannot deal with themselves, such as the training of candidates for Ordination, and Diocesan Training Colleges for Teachers, Central Missionary work, and helping hard-pressed dioceses such as our own.

Our Diocesan Conference has accepted its share of the estimated expenditure, and hopes that every parish will do its part. It is not a large sum which is asked for from this parish—£3 18s. and we ought to be able to contribute this amount in the collections on November 15th.

THE CHURCH COUNCIL invites the attendance of Church people at a lecture, illustrated by lantern, which will be given in the Temperance Hall on Thursday, November 26th, at 7.30 p.m., entitled "The Diocese of

Southwell, historical, commercial and ecclesiastical." The purpose of the lecture is to explain the reasons for the proposed division of this large and unwieldy Diocese into two separate dioceses, for Nottinghamshire and Derbyshire. Admission will be free, and a collection will be made.

GARDENS AND ALLOTMENTS ASSOCIATION.—The annual General Meeting took place on October 19th, when the officers for the ensuing year were appointed:—Mr. J. Lodder, Chairman; Rev. A. D. Hill, Treasurer and Secretary; Committee: Messrs. G. Higgs, W. C. Millington, E. Millington together with the holders of the allotments.

The next Monthly Meeting will be held on Tuesday, November 10th, at 7 p.m. in the School. Subscriptions are now due and Members are requested to state their requirements for seed potatoes at this Meeting.

BOYS' BRIGADE.—A Sale of Work and Jumble Sale organized by the officers held in the Temperance Hall on Saturday, September 26th, was a great success and realized £25. The officers on behalf of the Company wish to thank all who helped towards this result. The Company commenced its work on Friday, October 9th. Boys reserves 6 to 7 p.m.; Boys Brigade 7 to 9 p.m. Founder's Day in the Boys' Brigade was celebrated on Sunday morning, October 25th, by a Church Parade.

CHILDREN'S HOSPITAL.—As the result of the annual collection made from house to house in September, £3 3s. has been sent to the Nottingham Children's Hospital by Mrs. Beaumont.

FOOTBALL CLUB.—Mr. N. Rhodes has undertaken the office of Secretary on Mr. V. Manchester's resignation. The Season began well with winning matches against Cotgrave and Syerston. The Club is affiliated to the Notts Football Association and has entered for the Junior Cup. The first round against Christ Church Unitarians was stopped by rain, and played again a week later, when East Bridgford won by four goals to one. The second round is against Kegworth United on October 24th.

CHURCH SERVICES FOR NOVEMBER.

Nov. 1st.	All Saints' Day. 21st Sunday after Trinity. Holy Communion 8 and 10.45 (choral). Mattins 10.
" 8th.	22nd Sunday after Trinity. Holy Communion 8.
" 15th.	23rd Sunday after Trinity. Holy Communion mid-day. Collections for Central Church Funds.
" 22nd.	Sunday next before Advent. Holy Communion 8.
" 26th.	Thursday. Canon Adams' lecture 7.30.
" 29th.	1st Sunday in Advent. Holy Communion 8.
" 30th.	Monday. S. Andrew, A. & M. Holy Communion at 10.
Dec 6th.	2nd Sunday in Advent. Mattins 10. Holy Communion (choral) 10.45. Foreign Missions S.P.G.

EXTRACTS FROM PARISH REGISTERS.

MARRIAGE.

Oct. 14th. At Clareborough, Notts, William Henry Soles and Kate Annie Batty.

BURIALS.

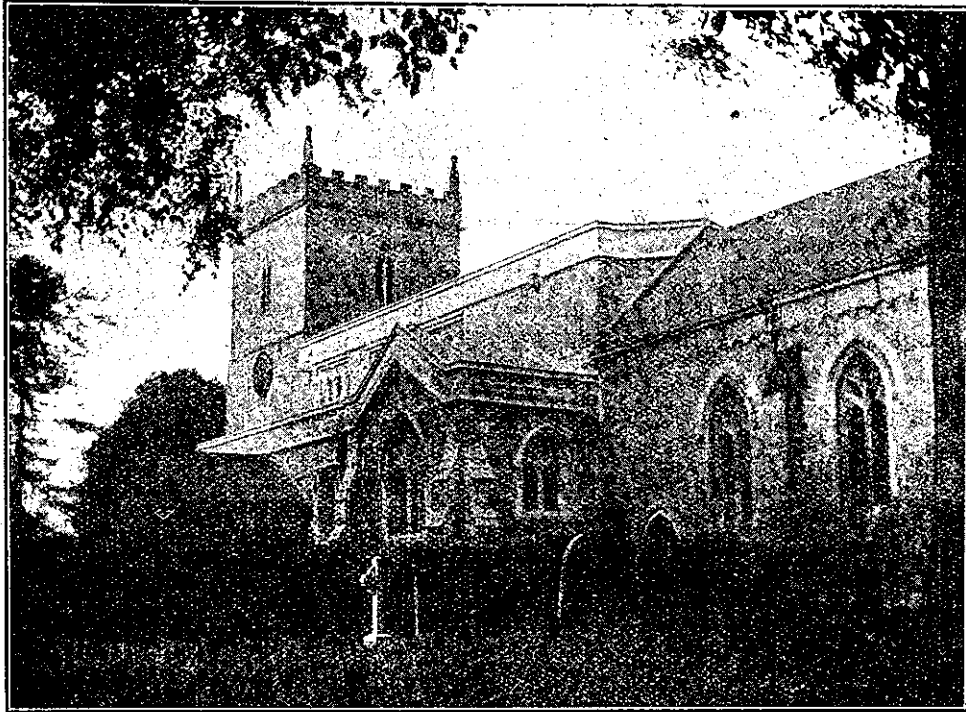
Oct 7th. Cecilia May Straw, aged 4 weeks.

" 14th. Sarah Elizabeth Huskinson, aged 75 years.

TIMES OF SUNSET at East Bridgford for November. Lighting up one hour later, Number plate lights half an hour later:—

Nov. 8th, 4.22; 16th, 4.9 (New Moon); 23rd, 4.0; 30th, 3.52 (Full Moon).

EAST BRIDGFORD MAGAZINE.



St. Peter's Church, East Bridgford.

SerVICES.

HOLY COMMUNION :—

On the first Sunday in the Month : Matins at 10 ; Choral Eucharist 10.45.
After Morning Prayer on the Third Sunday in the Month.
On all other SUNDAYS and HOLY DAYS at 8 a.m.

MORNING AND EVENING PRAYER :—

Sundays at 10.45, (10, on first Sunday in Month) and 6.30 p.m.

HOLY BAPTISM :—

First Sunday in month at 3, or at other Services on due notice.

CHURCHING OF WOMEN :—

Wednesday and Friday at 10, or before any Service on due notice.

SUNDAY SCHOOL AND CATECHISM :—

At 10 a.m. and 2.30 p.m. in the National School. Catechism in Church
at 2.30.

A. D. HILL, Rector.

ADVENT, 1925. We may find useful lessons of the meaning of Advent by attentive use of the Collects appointed for the four Sundays.

The first bids us *welcome Christ*, not merely with Christmas hymns, but in St. Paul's phrase, "awake from sleep and put on the Lord Jesus Christ," now in the time of this mortal life.

The second bids us *know Christ* in the Holy Scripture. St. Chrysostom, one of the early fathers of the Church, quaintly says, "they are the swaddling clothes in which Christ is wrapped up."

The third bids us *seek Christ*. His Ministers, who come in His Name, are stewards of His mysteries—that Holy Sacrament in which He assures us that we can find Him, and gives us pledges of His presence and His love.

The fourth bids us *use Christ*. His power is among us, and though we are sorely hindered by sins and troubles of life, we know we can be speedily helped if we make use of that power which He has come to bring.

CHRISTMAS DAY, Friday, December 25th.—The Holy Communion will be celebrated at 8 and after Mattins at 10.45. There will be Evening Service at 7 p.m.

Will those who are willing to help in decking the Church for Christmas kindly come to the Church on Christmas Eve for this purpose.

ARMISTICE DAY, November 11th, has been kept this year more markedly than ever, in the spirit of remembrance and quiet thanksgiving and resolution, and its observance has gained greatly in depth and dignity. This was especially the case in London where in addition to the 11 o'clock ceremony at the Cenotaph, a well-attended and impressive service was held in the Albert Hall.

On the preceding Sunday evening the collection in our Church was devoted to the Lord Kitchener Hostel at Attleborough, at which Pte. W. Mann is now residing.

Many of our readers will be interested in knowing that Flight Lieut. Herbert V. Rowley, son of the late Vicar of Kneeton, was one of the three airmen who have successfully completed a flight from near Cairo in Egypt to Kano in Nigeria and back again. They started from Helwan on October 27th, in three D.H. 9A biplanes, following the Nile valley to Khartum, and thence westwards about Lat. 12°N, across the Soudan, reaching Kano on Nov. 1st. The return journey took from November 12th to 17th, the whole distance covered being 5,600 miles.

CRICKET CLUB.—At the Annual General Meeting held on October 28th, Mr. R. K. Beaumont in the chair, the following were appointed. President, R. H. Swain; Treasurer, Rev. A. D. Hill; Captain, W. H. Foster; Vice-Captain and Assistant Secretary, F. Collishaw; Honorary Secretary, V. Manchester; Committee, N. Rhodes, W. Lodder, C. Wilkinson, J. Kemp, J. Wilkinson, A. Smith.

The subscription, to be paid before May 31st, is, for those over 18 years, 6/6, and under 18 years, 3/-.

S.P.G. OVERSEAS MISSIONS.—This important part of the Church's work will be set before us on the third Sunday in Advent, December 13th. The Southwell Diocesan Missionary Council in its Report, states that the sum of £18,148 was contributed last year by the Diocese to work overseas. There are forty or fifty Missionary Societies in communion with the Church of England, doing work on a fairly large scale in various parts of the Non-Christian World; and it is part of the purpose of the Central Council to provide a united policy towards the work confronting the Church in the world at the present time.

Free Will Offerings for this quarter should be sent in before the end of this month, as the Churchwardens make up the year's accounts to December 31st.

The amount received on Nov. 15th for the Central Church Funds was £3 18s. 3d., which with the collection made in May for Diocesan Fund makes up the full total of the proportionate amount asked for from this parish, £12.

The Annual Meeting of the Bible Society took place in the W. I. Hut on Wednesday, Nov. 11th, Mr R. H. Swain took the chair and an address was given by Rev. J. A. Cooper, Vicar of Belper. Owing to the arrangement for the broadcasting of the Archbishop's address at 7.30 on Armistice Day from Canterbury, the meeting was held at 6 p.m., instead of the time previously arranged.

The death of H.M. Alexandra, the Queen Mother, in her 81st year will be felt as a great loss by all who recall her long life of love and service. It took place at Sandringham on Friday, Nov. 20th.

A Wheeled Bier for use at Funerals has been presented to the Parish by the Women's Institute. It is kept at Miss Huskinson's, and applications for it should be made to Mr. G. Priestley, Parish Clerk. A fee of two shillings for the use of the bier will be charged.

CHURCH SERVICES FOR DECEMBER.

Dec. 6th.	2nd Sunday in Advent.	Mattins 10.	Holy Communion 10.45.
" 13th.	3rd Sunday in Advent.	Holy Communion 8.	Foreign Missions.
" 20th.	4th Sunday in Advent.	Holy Communion mid-day.	
" 25th.	CHRISTMAS DAY.	Holy Communion 8.	Mattins and Holy Communion at 10.45 Evensong 7.
" 27th.	1st Sunday after Christmas.	S. John Ev.	Holy Communion 8.
Jan 3rd, 1926.	2nd Sunday after Christmas.	Holy Communion 8.	Mattins 10. Holy Communion 10.45.

EXTRACTS FROM PARISH REGISTERS.

BAPTISM

Nov. 22nd. Elizabeth Mary, daughter of Charles William and Gladys Mary Hall

MARRIAGE.

Nov. 7th. Cecil Bernard Curtis and Dorothy Eliza Thornton,

BURIAL.

Nov. 12th. At Car Colston. Daniel Brambley, aged 80 years.

TIMES OF SUNSET at East Bridgford for December. Lighting up one hour later, Number plate lights half an hour later :—

Dec. 8th, 3.46; 15th, 3.45 (New Moon); 22nd, 3.46; 30th, 3.53 (Full Moon).